

- ATTENTION:**
- GENERAL MANAGER
 - PARTS MANAGER
 - CLAIMS PERSONNEL
 - SERVICE MANAGER

IMPORTANT - All Service Personnel Should Read and Initial in the boxes provided, right.

© 2025 Subaru of America, Inc. All rights reserved.



QUALITY DRIVEN® SERVICE

SERVICE BULLETIN

APPLICABILITY: 2019-24MY Forester

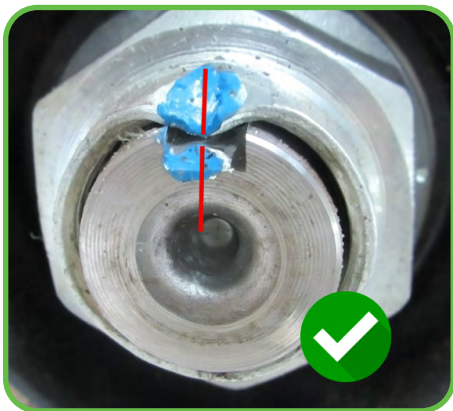
NUMBER: 05-94-25

SUBJECT: Axle Nut / Repair Procedure

DATE: 09/30/25

INTRODUCTION:

This bulletin outlines the repair procedure to follow when the axle nut has rotated from its originally torqued position. If the alignment mark on the factory installed axle nut is not properly aligned, follow the steps detailed below.



Axle Nut Has NOT Rotated



Axle Nut Has Rotated

PRODUCTION CHANGE INFORMATION:

A revised assembly procedure has been implemented in vehicle production, as shown in the table below:

Model	Starting VIN
Forester	PH492945

CAUTION: VEHICLE SERVICING PERFORMED BY UNTRAINED PERSONS COULD RESULT IN SERIOUS INJURY TO THOSE PERSONS OR TO OTHERS.

Subaru Service Bulletins are intended for use by professional technicians ONLY. They are written to inform those technicians of conditions that may occur in some vehicles, or to provide information that could assist in the proper servicing of the vehicle. Properly trained technicians have the equipment, tools, safety instructions, and know-how to do the job correctly and safely. If a condition is described, DO NOT assume that this Service Bulletin applies to your vehicle, or that your vehicle will have that condition.

Subaru of America, Inc. is ISO 14001 Compliant

ISO 14001 is the international standard for excellence in Environmental Management Systems. Please recycle or dispose of automotive products in a manner that is friendly to our environment and in accordance with all local, state and federal laws and regulations.

Continued...

SERVICE PROCEDURE / INFORMATION:

REMINDER: Customer satisfaction and retention starts with performing quality repairs.

Axle Nut Inspection

If a loose axle nut is observed, inspect its condition as follows:

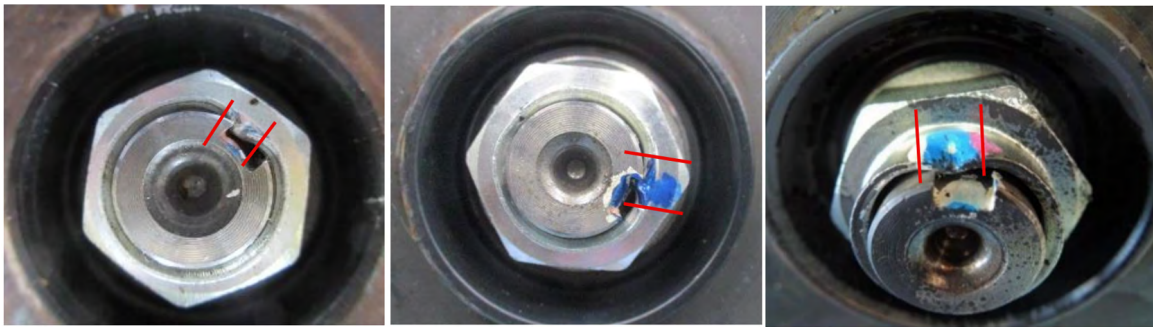
STEP 1: Check the hub for noise or play. If abnormal, replace the hub.

STEP 2: Confirm whether the hub or nut has been replaced before. If so, stop here — this TSB doesn't apply.

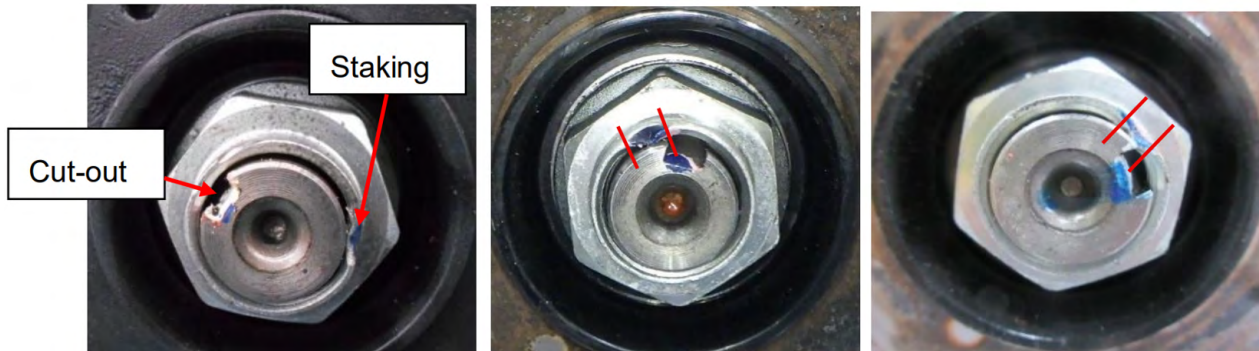
STEP 3: Inspect the staked portion of the axle nut.

- If the stake is still within the driveshaft cut-out → replace the nut only.
- If the stake has shifted outside of the cut-out → replace both the hub assembly and the nut.

Replace Axle Nut Only



Replace Hub Assembly and Axle Nut



Axle Nut Replacement Procedure

If the staked portion of the axle nut was within the cut-out of the drive shaft:

1. Remove and discard the old axle nut.
2. Inspect the drive shaft threads and hub surface to ensure there is no damage.
3. Degrease the drive shaft threads, hub surface, and the outer surface of the new axle nut.
Do NOT degrease the threads of the new axle nut.
4. Install the new axle nut according to the applicable service manual.

Note: Do not use power tools to tighten the axle nut. Ensure the axle nut is torqued to spec as per the applicable service manual.

Continued...

Hub Assembly and Axle Nut Replacement

The service procedures for Hub Unit Bearing remain unchanged. Always refer to the applicable Service Manual and review the full requirements of the repair being performed. The Service Manual procedures contain information critical to performing an effective repair the first time, every time. This includes but is not limited to important SAFETY precautions, proper inspection criteria, necessary special tools, required processes and related one-time-use parts needed for a complete and lasting repair. Refer to

STIS: Driveline/Axle/ PROPELLER SHAFT / DRIVE SHAFT / AXLE/ Hub Unit Bearing

Note: Do not use power tools to tighten the axle nut. Ensure the axle nut is torqued to spec as per the applicable service manual.

WARRANTY / CLAIM INFORMATION:

For vehicles within the Basic New Car Limited Warranty period, Powertrain Warranty period, or covered by an active SAS Classic/Gold plan, this repair may be submitted using the following claim information:

Labor Description	Labor Operation #	Labor Time	Repair Code
Axle Nut R & R (One or all)	A611-286	0.3h	NBY-23
One Hub Assembly and Axle Nut R&R	A611-386	0.8h	

IMPORTANT REMINDERS:

- SOA strongly discourages the printing and/or local storage of service information as previously released information and electronic publications may be updated at any time.
- Always check for any open recalls or campaigns anytime a vehicle is in for servicing.
- Always refer to STIS for the latest service information before performing any repairs.