



Service Bulletin

Bulletin No.: 23-NA-151

Date: May, 2025

INFORMATION

Subject: Hybrid/EV Battery Stability, High Priority DTCs, Potential Loss of Isolation, Vehicle Handling and Battery Pack Return Shipping Requirements

Brand:	Model:	Model Year:		VIN:		Engine:	Transmission:
		from	to	from	to		
BrightDrop	EV600	2022	2022	—	—	All	All
	Zevo 600	2023	2024				
	Zevo 400	2024	2024				
Cadillac	CELESTIQ	2025	2025				
	LYRIQ	2023	2025				
	OPTIQ	2025	2025				
	Escalade IQ	2025	2026				
	Escalade IQL	2026	2026				
	VISTIQ	2026	2026				
Chevrolet	Blazer EV	2024	2025				
	Equinox EV	2024	2025				
	Silverado EV	2024	2025				
	BrightDrop 400	2025	2025				
	BrightDrop 600	2025	2025				
GMC	HUMMER EV Pickup	2022	2025				
	HUMMER EV SUV	2024	2025				
	Sierra EV	2024	2025				

Involved Region or Country	North America, Argentina, Bolivia, Brazil, Chile, Colombia, Ecuador, Egypt, Europe, Cadillac Korea (South Korea), GM Korea Company, Japan, Palestine, Israel, Middle East, Kazakhstan, Australia/New Zealand
Information	<p>This bulletin and criteria within are to determine the internal stability of the High Voltage Battery and the core return shipping method.</p> <p>If a vehicle arrives with any of the DTCs on the list, additional checks need to occur to give proper direction on isolated vehicle storage guidance and repair instructions and results MUST be documented in a TAC Case.</p> <p>Perform the service instruction steps as indicated if any of the following DTCs listed are set as CURRENT:</p> <p>DTCs: P0AA6, U359E, P0AE3, P0C78, U1666, U1667, U2BFC, P1C34, OR P0AA7 set by itself, OR if any of these DTCs are listed as HISTORY:</p> <ul style="list-style-type: none"> • P0AA6 • U359E <p>OR if directed here by a service procedure such as High Voltage System Inspection (physical battery damage observed) or TAC.</p>

Service Procedure

Warning: Never leave a vehicle or battery pack with an applicable DTC indoors overnight, plan all work to be completed during normal business hours.

- Thermal Event Gas Sensor. 0 to 30,000 ppm and not rising is normal.
 - Thermal Event Pressure Sensor. Near barometric pressure and not rising is normal.
 - Interface Control Module Temperature (1 thru 24 as applicable). Near ambient and close to all other temperature sensors is normal.
6. If the vehicle is already on a hoist, you may perform the battery pack inspection steps that do not require battery pack removal to perform.
 7. Perform SPS2 Hybrid/EV Battery Data Retrieval, refer to 25-NA-044.

Danger: Damage to a Lithium-Ion hybrid/EV battery pack could result in fire, loss of electrical isolation or exposure to high voltage. Until the high voltage system inspection has been completed, store the vehicle with hybrid/EV battery pack installed outside in a secure area away from buildings and other vehicles and protected from rain, snow, and other moisture.

8. Move the vehicle to a stable location outdoors: isolated and away from buildings, vehicles, and foot traffic while waiting direction to diagnose/repair. Recommended distance is 50 feet (15M). Document isolated location via photo (Fig 4 and 5). Refer to 'Neutral Service Mode' in electronic transmission range select service information if required.
9. Start a TAC case and upload all photos and your GDS2 session log per Document ID: 6385557 / PIP4902 and reference this bulletin. Additionally, provide any previous diagnosis work performed based on the DTC(s) set or inability to collect the data.

Note: Perform the following steps at time of High Voltage Battery replacement. Depending upon the following results you may be required to immediately move the High Voltage Battery outdoors after removal. Do NOT submit a core pickup request unless given approval by TAC.

10. Following SI Procedure for high voltage battery removal, Hybrid/Electric Vehicle Battery Pack Removal, and Installation:

- 10.1. Inspect the High Voltage Connectors at the High Voltage Battery for corrosion, moisture, and/or soot. Take clear, close-up photos of the vehicle side HV connectors and High Voltage Battery connection headers. Review Fig 8-10 for examples of light and heavy soot and the photo clarity required. Attach photos to TAC Case.

Note: If soot, corrosion or moisture is observed, continue but contact TAC immediately upon completion.

- 10.2. Check for High Voltage at the Hybrid/Electric Vehicle Battery Pack X1 through X7 (as equipped) by following High Voltage Disabling – High Voltage Disable Confirmation Table – A4 Hybrid/EV Battery Pack in Service Information (Fig 6 and 7).

Note: If more than 3V is found, continue but contact TAC immediately upon completion.

- 10.3. Remove the High Voltage Battery Pressure Equalizer Vent and Battery Inspection plug (if equipped) (Fig 11 and 12). The equalizer vents have 4 fasteners and are located at the base of the battery. Wearing your personal protection equipment use a cotton swab or paper towel to swab inside the enclosure for moisture/coolant and/or soot. Take photos and attach to TAC case.

Note: Swabs are available in a pack of 20 as GM-47909-20.

Note: If fluid/soot is observed, continue but contact TAC immediately upon completion.

Danger: Do not insert anything other than a cotton swab or paper towel while performing the swab test.

- 10.4. Evacuate residual coolant from the High Voltage Battery coolant circuit. Refer to the SI Procedure for Hybrid/Electric Vehicle Battery Pack Replacement and Shipping Preparation.

Note: If unable to remove coolant from the High Voltage Battery coolant circuit, continue but contact TAC immediately upon completion.

- 10.5. Vacuum test the High Voltage Battery coolant circuit for leaks. See Hybrid Battery Pack Coolant Passage Leak Test (Fig 13 and 14). Attach photos to the TAC case.

Note: If the High Voltage Battery coolant circuit does not hold vacuum, continue but contact TAC immediately upon completion.

- 10.6. Pressure test the High Voltage Battery coolant circuit for leaks (Only complete if passes vacuum test). See Hybrid Battery Pack Coolant Passage Leak Test (Fig 15 and 16). Attach photos to the TAC case.

Note: If the High Voltage Battery coolant circuit does not hold pressure, continue but contact TAC immediately upon completion.

11. Place the High Voltage Battery in the provided DDR Crate & move outdoors: isolated and away from buildings, vehicles, and foot traffic. Cover high voltage battery/DDR crate with a tarp to protect from the elements while awaiting further direction (Fig 4). Take picture of location and upload into TAC Case. Report all results to TAC for Engineering review.

23-NA-151 Hybrid/EV Stability Printable Checklist for VIN: _____

Initial Vehicle Inspection

Steps	Results		Submission Check List
Inspect Coolant Level. Photograph result. <i>Danger: DO NOT add coolant without first confirming the Lithium-Ion Hybrid/EV Battery Pack internal coolant passage can maintain proper vacuum and pressure. Adding coolant to the coolant system with an internal lithium-ion Hybrid/EV Battery Pack coolant leak may result in Fire, which could result in vehicle or component damage, and cause severe body injury or death.</i>	Passed Example Refer to Figure 1	Failed Example Refer to Figure 2	Coolant Level Photo _____
GDS2 Session Log. Battery Energy Control Module>Data Display>Hybrid/Electric Vehicle Battery Pack Thermal Stability Data	Refer to Figure 3	Pack Isolation 1 _____ ohms 2 _____ ohms Thermal Sensor _____ C/F Thermal Gas _____ PPM Thermal Pressure _____ psi/kPa Interface Temperature (average) _____ C/F	GDS2 -Vehicle Battery Pack Thermal Stability Data Captured _____
Move vehicle to stable location away from buildings and other vehicles. Recommended isolation distance is 50 feet (15M) Photograph results. <i>Warning: Never leave a vehicle or battery pack with an applicable DTC indoors overnight, plan all work to be completed during normal business hours.</i>	Passed Example Refer to Figure 4	Failed Example Refer to Figure 5	Vehicle Isolated Outside and Picture Captured/Submitted _____
Start TAC Case (submit all the above).	Vehicle to stay isolated outdoors until Hybrid/Electric Vehicle Battery Pack Removal and Installation or under the direction of TAC during any required diagnosis procedure.		TAC Case Created Case # _____

High Voltage Battery Removal Stability Inspection

Hybrid/Electric Vehicle Battery Pack Analysis			
Steps	Results		Submission Check list
High Voltage Disabling at the A4 Hybrid/EV Battery Pack. Note It is only necessary to photograph the meter results if greater than 3 volts is observed.	Passed Example Refer to Figure 6	Failed Example Refer to Figure 7	Pass Fail Pictures Captured/Submitted
Inspect all Battery Pack HV connectors and headers for soot, moisture, coolant or any signs or damage. Photograph every connector/header and advise TAC of findings. Note: Ensure all connector seals are present/undamaged and remain attached to the harness side connector.	Passed Examples Refer to Figure 8	Failed Heavy Soot Examples: Refer to Figure 9 Failed Light Soot Examples: Refer to Figure 10	Pass Fail Pictures Captured/Submitted

Hybrid/Electric Vehicle Battery Pack Analysis			
Steps	Results		Submission Check list
Remove the HV battery pressure equalizer vent and inspection plug (if equipped). Insert a cotton swab as an aid to detecting moisture/coolant. Photograph and advise TAC of findings.	Passed Example Refer to Figure 11 On some vehicles the pressure equalizer vent is accessible prior to battery pack removal.	Failed Example Refer to Figure 12	Pass Fail Pictures Captured/Submitted
Hybrid/Electric Vehicle Battery Pack Replacement and Shipping Preparation Remove coolant from the HV battery internal coolant circuit.			Pass Fail Pictures Captured/Submitted
Hybrid Battery Pack Coolant Passage Leak Test. Inspect coolant passage for leaks, should maintain 20 inches of vacuum for 2 minutes. Photograph and advise TAC of findings.	Passed Example Refer to Figure 13	Failed Example Refer to Figure 14	Pass Fail Pictures Captured/Submitted
Hybrid Battery Pack Coolant Passage Leak Test. Inspect coolant passage for leaks, should maintain 5 psi of pressure for 2 minutes. Photograph and advise TAC of findings. Note: ONLY PERFORM PRESSURE TEST IF VACUUM TEST WAS PASSED	Passed Example Refer to Figure 15	Failed Example Refer to Figure 16	Pass Fail Pictures Captured/Submitted
Stable to Ship determination			RESULTS
If moisture/coolant/soot was detected at the HV connectors the HV battery is NOT STABLE. If moisture/coolant/soot is detected at the equalizer vent and/or inspection plug the HV battery is NOT STABLE.			
NOT STABLE		STABLE	
Immediately Place the HV battery in the provided DDR Crate (if available) and move to a stable location outdoors, away from buildings, vehicles and foot traffic. Cover the HV battery or DDR crate with a tarp. Photograph location and immediately advise TAC.		Place the HV battery in the provided DDR crate. Advise TAC of the results and request the core return process.	


<p>Figure 1 (Coolant Level - Passed)</p>	
---	--

Figure 2 (Coolant Level - Failed)



6715476

Figure 3 (GDS2 Data Capture)

GDS2
Stored Data Review

Control Module: Powertrain
Control Data Filter: Diagnostic Data Select | Live Data | DTC Status | Parameters | Jump into Module | DSDM Vehicle Configuration | 1/10

View Log | Refresh | Refresh | Refresh | Refresh | Refresh | Refresh | Refresh

Parameter Name	Value	Units	Control Module
Hybrid Electric Vehicle Battery Charge of Discharge	74.11	%	Battery Energy Control Module
Motor Inverter Inverter Separation - Pack	0.000	uOhm	Battery Energy Control Module
Motor Inverter Inverter Separation - Pack 2 (Pack 2 Only)	0.000	uOhm	Battery Energy Control Module
Hybrid Electric Vehicle Battery Pack Thermal Power Temperature Sensor	24	°C	Battery Energy Control Module
Hybrid Electric Vehicle Battery Pack Thermal Power Temperature Sensor 2	24	°C	Battery Energy Control Module
Hybrid Electric Vehicle Battery Pack Thermal Power Gas Sensor	0	ppm	Battery Energy Control Module
Hybrid Electric Vehicle Battery Pack Thermal Power Pressure Sensor	0	psia	Battery Energy Control Module
Hybrid Electric Vehicle Battery Pack Thermal Power Pressure Sensor 2	0	psia	Battery Energy Control Module
Hybrid Electric Vehicle Battery Pack Thermal Power Pressure Sensor 3	0	psia	Battery Energy Control Module
Hybrid Electric Vehicle Battery Inverter Control Module 1 Temperature 1	16	°C	Battery Energy Control Module
Hybrid Electric Vehicle Battery Inverter Control Module 1 Temperature 2	16	°C	Battery Energy Control Module
Hybrid Electric Vehicle Battery Inverter Control Module 2 Temperature 1	16	°C	Battery Energy Control Module
Hybrid Electric Vehicle Battery Inverter Control Module 2 Temperature 2	16	°C	Battery Energy Control Module

6856200



Figure 4 (Vehicle and Battery Pack Isolation – Passed)

6715481



6760498



Figure 5 (Vehicle and Battery Pack Isolation – Failed)

6715482



6760499

**Figure 6 (High Voltage Disable
Result < 3V)
Passed**



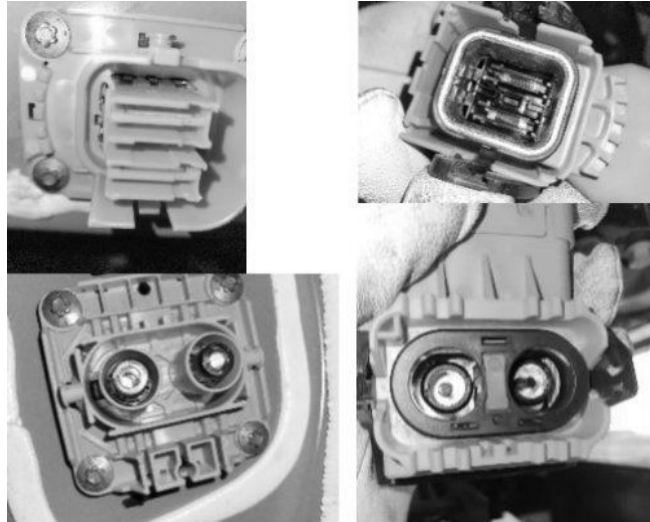
6715483

**Figure 7 (High Voltage Disable
Result > 3V)
Failed**



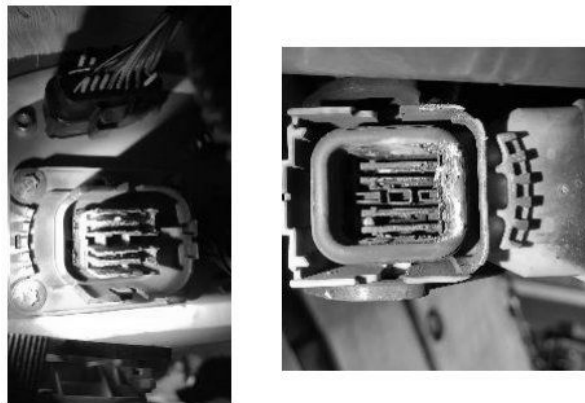
6760500

**Figure 8 (Battery Pack Connectors
- Passed)**



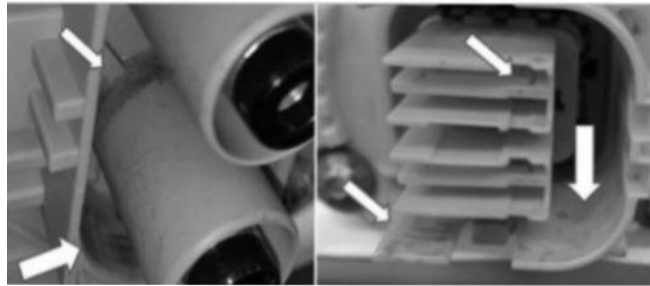
6715486

**Figure 9 Battery Pack Connectors
- Failed w/Heavy Soot)**



6715487

Figure 10 (Battery Pack Connectors – Failed w/Light Soot)



6715488

Figure 11 (Battery Pack Swab Test – Passed)

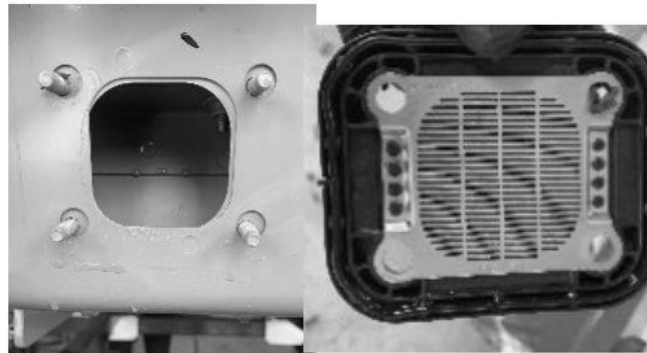


6715489

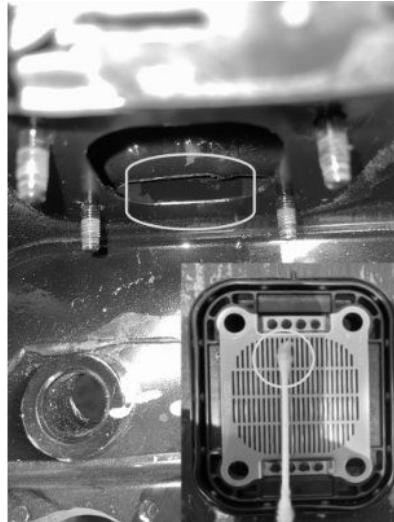


6933991

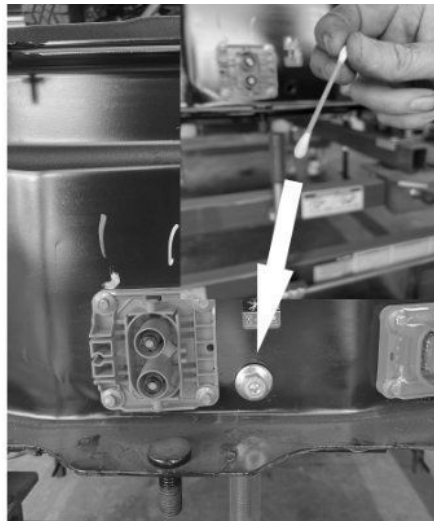
Figure 12 (Battery Pack Swab Test - Failed)



6715491



6763180



6763181

Figure 13 (Coolant Passage Vacuum Leak Test – Passed)



6715492

Figure 14 (Coolant Passage Vacuum Leak Test – Failed)



6715493

Figure 15 (Coolant Passage Pressure Leak Test – Passed)



6715494

Figure 16 (Coolant Passage Pressure Leak Test – Failed)



6715495

Warranty Information

For vehicles repaired under the Bumper-to-Bumper coverage (Canada Base Warranty coverage), use the following labor operation. Reference the Applicable Warranties section of Investigate Vehicle History (IVH) for coverage information.

Labor Operation	Description	Labor Time
5080398*	Hybrid/EV Battery Inspection & Transportability Assessment	1.0 hr

*This is a unique Labor Operation for bulletin use only.

Version	14
Modified	<p>Released September 05, 2023</p> <p>Revised October 17, 2023 – Updated Model Years, Added Steps 8-12 and added Warranty Information.</p> <p>Revised January 16, 2024 – Added Illustrations, Updated Steps, 2022 Model Year Zevo 600 and 2024 Zevo 400.</p> <p>Revised March 14, 2024 – Added Europe and Updated information throughout the entire bulletin.</p> <p>Revised May 23, 2024 – Added Equinox EV model, updated Involved Region or Country and multiple steps under Service Procedure.</p> <p>Revised June 04, 2024 – Added Warning and Adjusted Step 17.</p> <p>Revised August 01, 2024 – Removing U22xx DTCs, adding P0AE3 and P0C78. Rewording for alignment with service titles and naming.</p> <p>Revised August 14, 2024 – Added Chart and 2025 Model Year.</p> <p>Revised November 13, 2024 – Updated Entire Bulletin to aid in Printing and readability.</p> <p>Revised November 20, 2024 – Added Cadillac Escalade IQ.</p> <p>Revised December 10, 2024 – Added Cadillac OPTIQ and added “Passed” and “Failed” to figure 6 and 7.</p> <p>Revised February 26, 2025 – Added Cadillac VISTIQ.</p> <p>Revised April 08, 2025 – Updated Information section and steps 2 and 7 under Service Procedure to remove communication DTCs and add mention of pack damage and SPS data dump capture.</p> <p>Revised May 16, 2025 – Added Cadillac CELESTIQ, Escalade IQL, 2026 Model Year to Escalade IQ, and updated information throughout the bulletin.</p>

Additional SI Keywords: DTCs: P0AA6, P0AA7, U359E, P0AE3, P0C78, U1666, U1667, U2BFC, P1C34

