



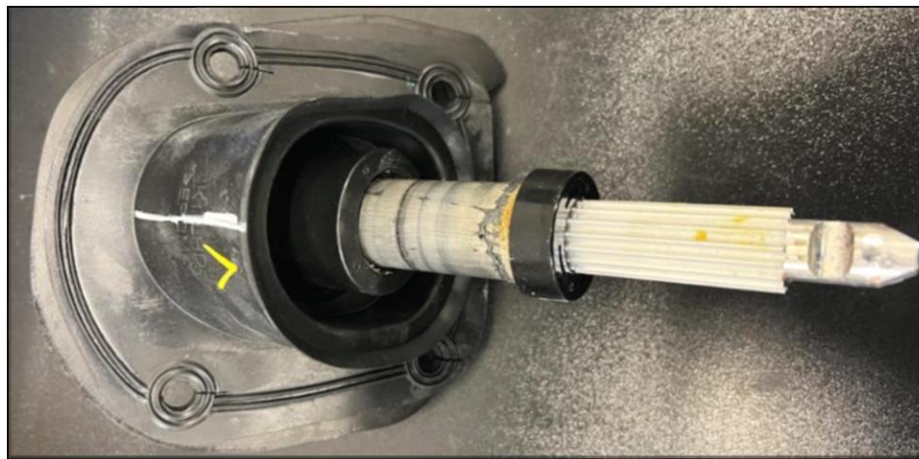
Technical Service Bulletin

GROUP	NUMBER
STEERING SYSTEM	25-ST-001G
DATE	MODEL(S)
SEPTEMBER 2025	SEE BELOW

SUBJECT: STEERING SHAFT NOISE INSPECTION & DUST COVER REPLACEMENT

This TSB supersedes 23-ST-004G-1 to modify the Description, Applicable Vehicles, Parts Information, Warranty Information, and Service Procedure pages 3–5 and 8–12.

Description: Some vehicles may exhibit a rubbing type noise when turning the steering wheel. Follow the procedure in this TSB to inspect the source of the noise and, if necessary, replace the Steering Shaft Dust Cover.



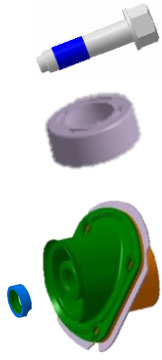
Applicable Vehicles:

Model Year	Model	Engine/Motor	Production Dates
2022–2023 & 2025	GV70 (JK1)	2.5T & 3.5T	Before 06/27/2024
2024–2025	GV70 (JK1A)	2.5T & 3.5T	Before 11/01/2024
2023–2025	GV70 Electrified (JK1 EV)	EV	Before 06/27/2024
2021–2025	GV80 (JX1)	2.5T & 3.5T	Before 06/26/2024
2025	GV80 Coupe (JX1)	3.5T	Before 06/26/2024
2021–2025	G80 (RG3)	2.5T & 3.5T	Before 06/26/2024
2023–2025	G80 (RG3 EV)	EV	Before 06/26/2024
2023–2025	G90 (RS4)	3.5T	Before 06/26/2024

NOTICE

To avoid any potential damage to Genesis EVs, Genesis EV repairs can only be performed by EV certified Genesis retailers.

Parts Information:

Model	Part Name	Part Number	Figure	Remarks
GV70 (JK, JK1A)	Dust Cover Kit	56420-AR000FFF		Kit contents: <ul style="list-style-type: none"> • MTG Bolt (2) • Dust Cap (1) • Dust Cover (1)
GV70 Electrified (JK1 EV)				
GV80 / GV80 Coupe (JX1)		56420-T6000FFF		
G80 (RG3)		56420-T1000FFF		
G80 Electrified (RG3 EV)				
G90 (RS4)				

Warranty Information:

Model	Op. Code	Operation	Op. Time	Causal Part	Nature Code	Cause Code
All	56415F05	Dust Cover Noise Inspection	0.3 M/H	Refer to WEBLTS for applicable part to labor op code combination	Q55	ZZ5
GV70 (JK, JK1A)	56420F00	Dust Cover Noise Inspection & Dust Cover Kit Replacement	0.8 M/H			
GV70 Electrified (JK1 EV)						
G80 Electrified (RG3 EV)	56420F01		0.7 M/H			
GV80 / GV80 Coupe (JX1)	56420F02		0.7 M/H			
G80 (RG3)						
G90 (RS4)						

NOTE 1: Normal warranty applies.

NOTE 2: Submit claim on Claim Entry Screen as “Warranty” type.

NOTE 3: This TSB includes repair justification photos. Refer to the latest Warranty Digital Documentation Policy for requirements.

NOTE 4: The incident parts are subject to callback through the normal Warranty Technical Center (WTC) parts return process. **Claim is subject to debit if the part is NOT returned.**

NOTE 5: If a part is found in need of replacement while performing this TSB and the affected part is still under warranty, submit a separate claim using the same repair order. If the affected part is out of warranty, submit a Prior Approval request for goodwill consideration prior to performing the work.

Service Procedure:**NOTICE**

Applying the recommended torque to all fasteners is essential to reduce potential issues from occurring after the service procedure.

Dust Cover Noise Inspection Procedure

1. Start the vehicle's engine or put it in Ready mode for EVs.
2. Turn the steering wheel side to side and listen for sound coming from the steering shaft dust cover area.

**Information**

Refer to the videos below for examples of steering shaft dust cover noise:

- <https://youtu.be/jPXNQpof5Aw>



- <https://youtu.be/mSOZyY43U1c>



3.
 - For G90 vehicles with E-SC, if the sound exists, proceed to **12V Battery Disconnection for G90 (RS4) equipped with electric supercharger (E-SC)**.
 - For other vehicles, if the sound exists, proceed to **Dust Cover Kit Replacement Procedure**.
 - If the sound does **NOT** exist, TSB does **NOT** apply.

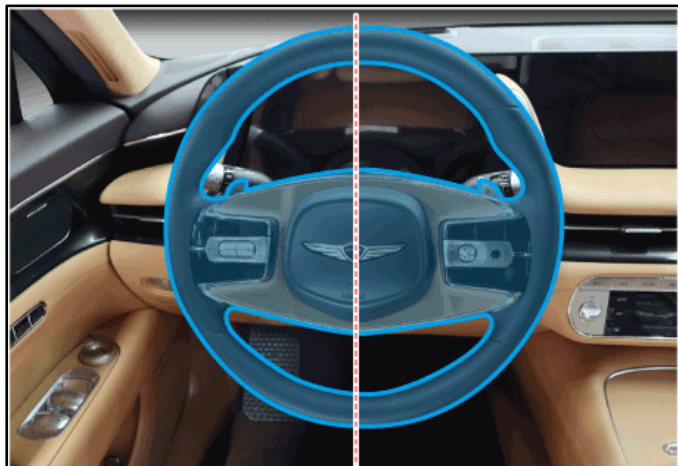
12V Battery Disconnection for G90 (RS4) equipped with electric supercharger (E-SC)

i Information

For G90 (RS4) vehicles equipped with electric supercharger (E-SC), the 48V battery pack must be removed to gain access to the 12V battery. Follow the procedures below to disconnect the 12V battery. Other than this exception, the rest of the procedures in this TSB apply to all models listed, including G90 (RS4) E-SC vehicles.

1. Center the steering wheel, front wheels pointed straight ahead.

Record customer's radio presets, then turn off the ignition switch. Wait at least **3 minutes** before continuing.



i Information

Centering the steering wheel provides a reference point when disconnecting and reattaching the steering universal joint.

The steering u-joint is "keyed" on both sides, allowing only one orientation of installation.

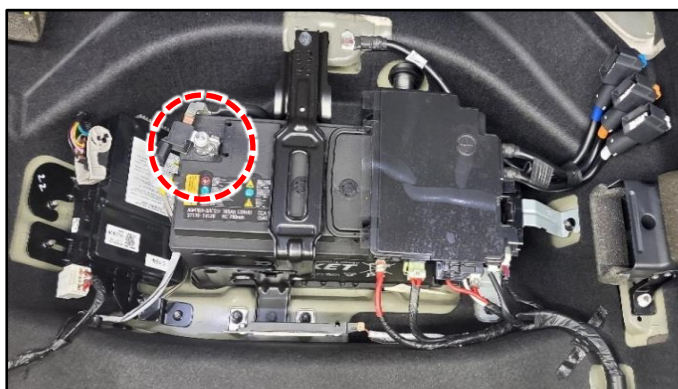
2. Remove the 48V battery system assembly (BSA) by following the procedures described in the service manual:

- **Engine Electrical System -> 48V Battery System -> Battery System Assembly (BSA) -> Removal and Installation**

3. With the BSA removed, the 12V battery is accessible. Disconnect the battery negative (-) terminal.

Battery Negative Terminal Tightening Torque:

lb-ft	6.5
lb-in	78
N.m	8.8



4. Proceed to **Dust Cover Kit Replacement Procedure, step 3.**

Dust Cover Kit Replacement Procedure

1. Center the steering wheel, front wheels pointed straight ahead. Use a steering wheel holding tool from an alignment machine to prevent the steering wheel from turning.

i Information

Centering the steering wheel provides a reference point when disconnecting and reattaching the steering universal joint.

The steering u-joint is “keyed” on both sides, allowing only one orientation of installation.



- 2.

⚠ CAUTION

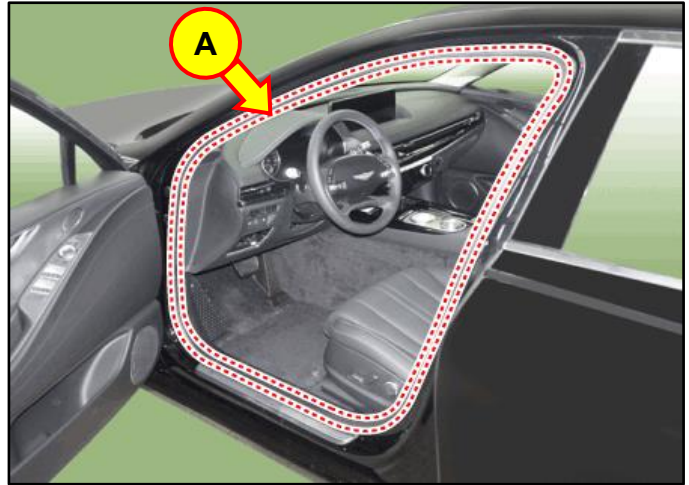
For EV vehicles, disconnect the service interlock connector and wait **3 minutes** before continuing to work on vehicle. See applicable Service Manual for details.

Record customer's radio presets, then turn off the ignition switch and disconnect the battery negative (-) cable. Wait at least **3 minutes**.

Battery Negative Terminal Tightening Torque:

lb-ft	6.5
lb-in	78
N.m	8.8

- Remove the L/H front door body side weather strip (A).



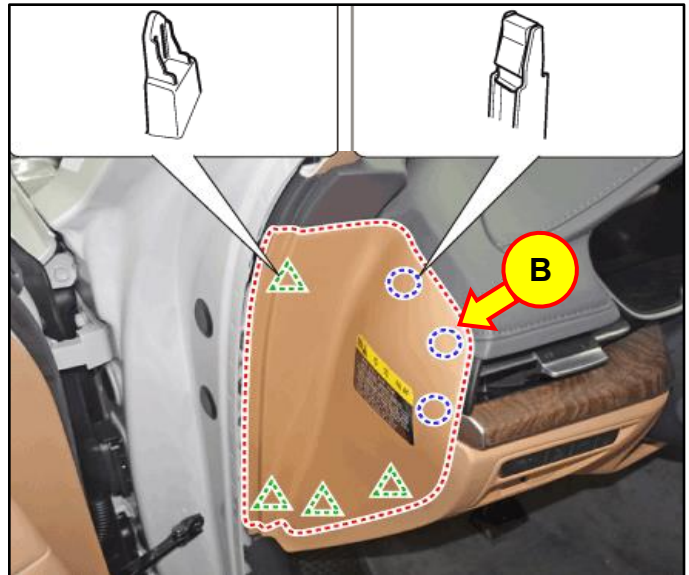
- Remove the crash pad L/H side cover (B) using a trim removal tool.

CAUTION

Be careful **NOT** to injure your hands when removing the cover.

NOTICE

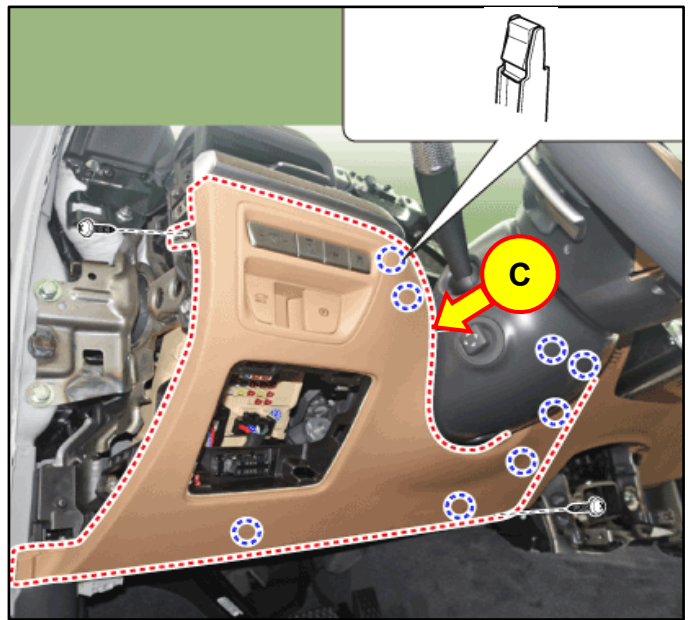
Be careful **NOT** to damage parts during removal.



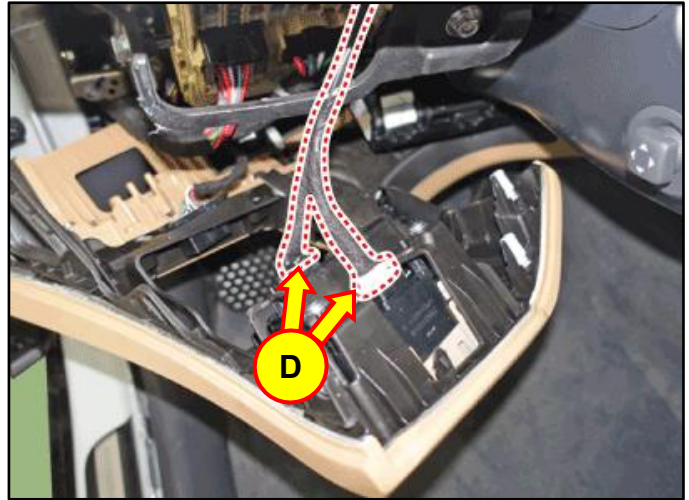
- Loosen the mounting screws and remove the crash pad lower panel assembly (C).

Information

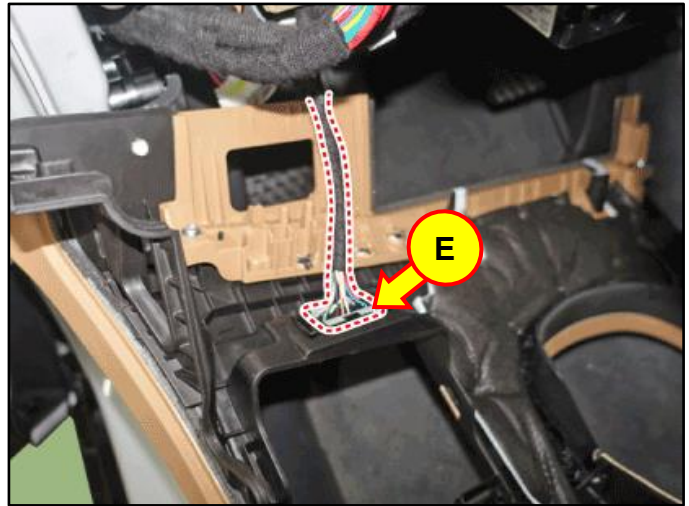
Be sure to replace any damaged clips with new ones during reassembly.



- Press the lock pin to remove all connectors (D) attached to the crash pad lower panel.



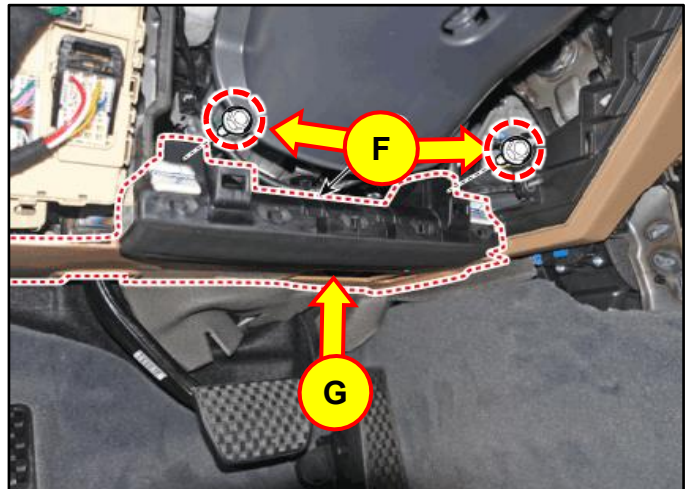
- Unclip the diagnostic connector (E) by pressing the locking pin and then remove the crash pad lower panel.



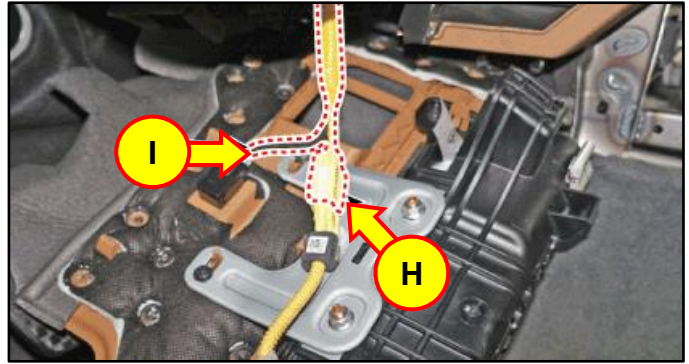
- Remove the knee airbag retaining bolts (F) and then remove the knee airbag assembly (G).

Knee Airbag Mounting Bolt Tightening Torque:

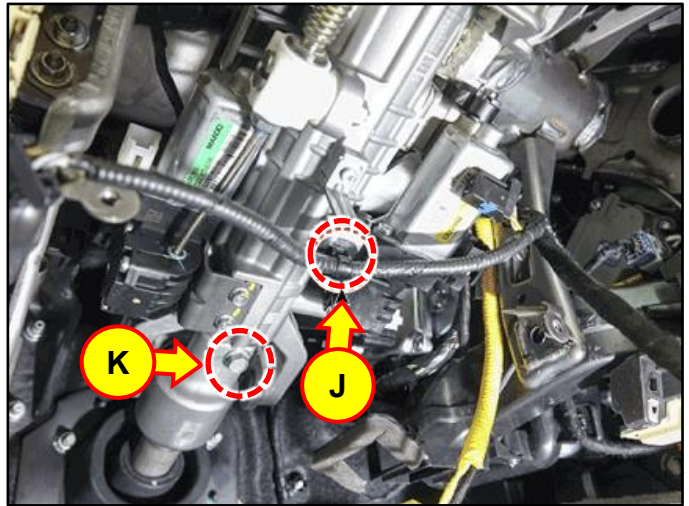
lb-ft	7.3
lb-in	91
N.m	9.8



9. Remove the knee airbag connector (H) and foot light connector (I) attached to the knee airbag assembly.



10. Remove the column shaft fixing clip (J) and loosen the universal joint upper fastening bolt (K).



Universal Joint Bolt Tightening Torque:

lb-ft	26
N.m	35

***i* Information**

Only remove the wiring fixing clip if it interferes with the universal joint upper fixing bolt.

NOTICE

Do **NOT** reuse the mounting bolt, use a new mounting bolt during install.

11. Remove the universal joint lower fastening bolt (L) and remove the universal joint from the steering shaft.

Universal Joint Bolt Tightening Torque:

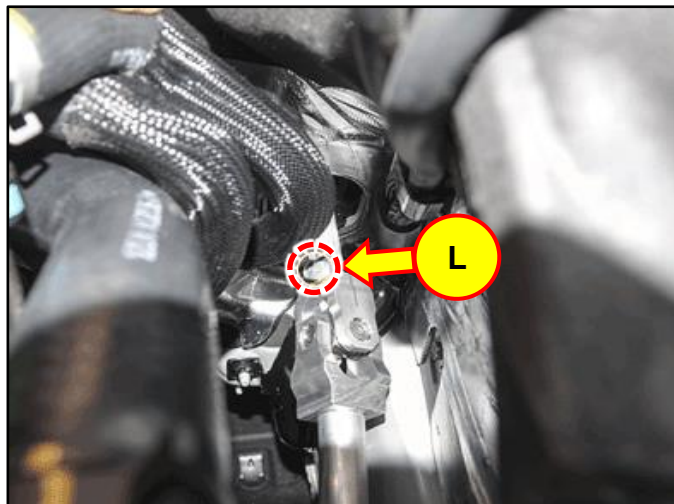
lb-ft	26
N.m	35

i Information

Some models may require removal of engine cover and/or air filter housing to access the universal joint lower fastening bolt (J). See applicable Service Manual procedures for details.

NOTICE

Do **NOT** reuse the mounting bolt, use a new mounting bolt during install.



12. Remove the steering shaft dust cover nuts (M) and then the steering shaft dust cover assembly (N).

i Information

For more details on removing the steering shaft dust cover assembly refer to the applicable Shop Manual for each vehicle.

Tightening Torque:

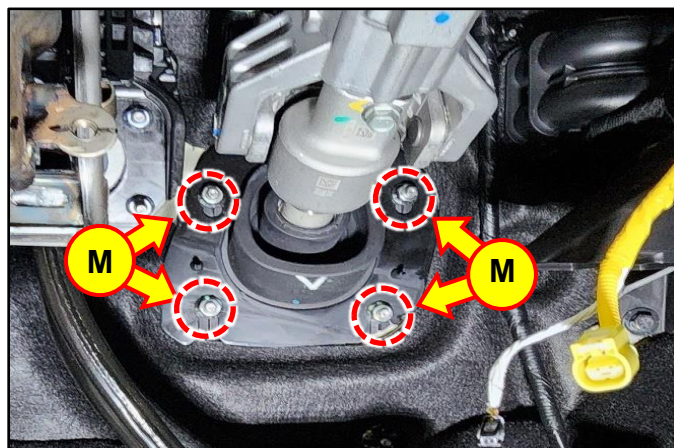
(JK1, JK1A, JK1A EV)

lb-ft	7.3
lb-in	88
N.m	9.8

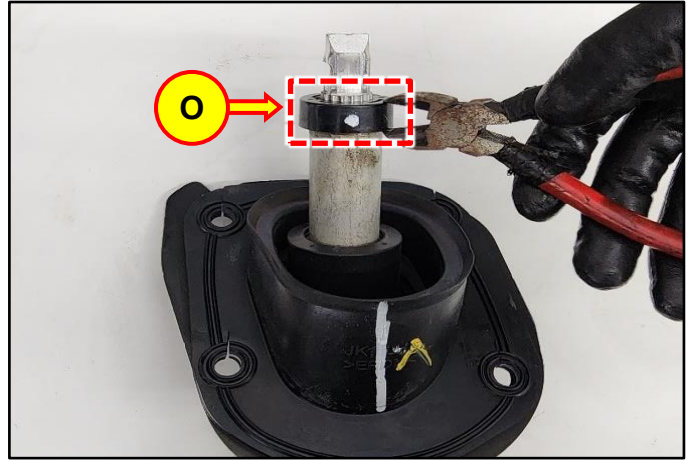
Tightening Torque:

(RG3, RG3 EV, RS4, JX1)

lb-ft	11
N.m	15



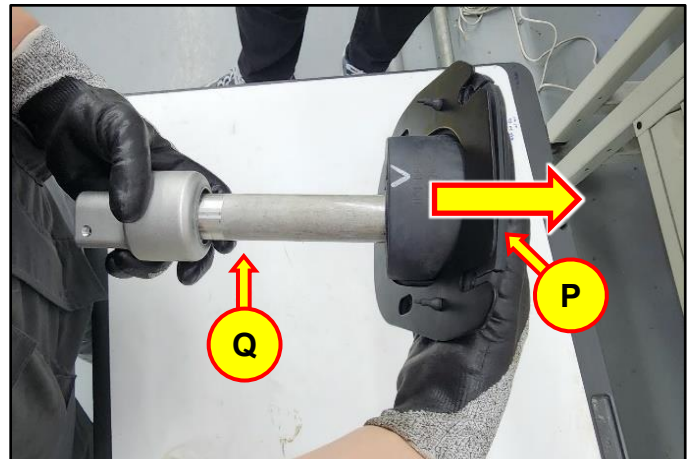
13. Remove the dust cap (O) using a nipper.



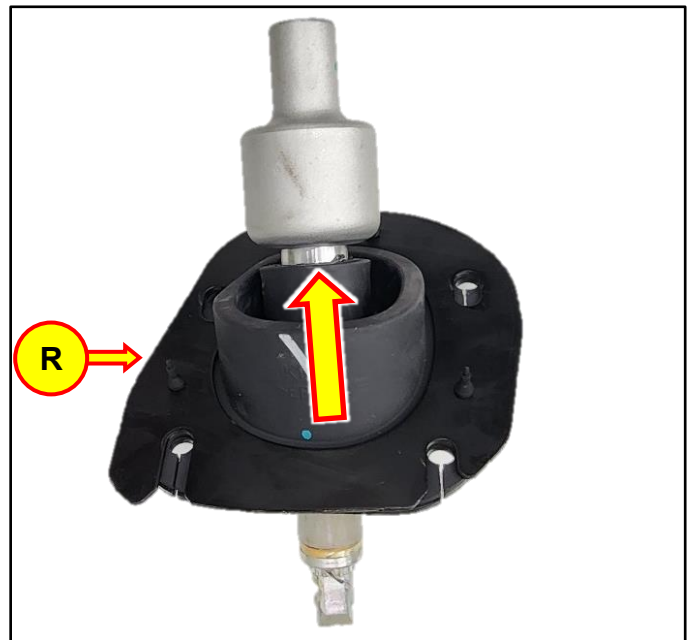
14. Remove the dust cover (P) from the shaft (Q).

i Information

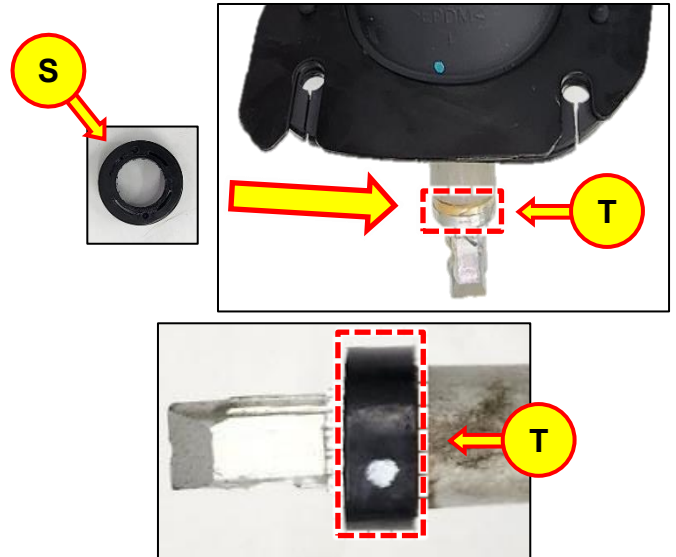
Keep the shaft to reuse in the next step.



15. Install the new dust cover (R) on the shaft.



- 16. Install the new dust cap (S) onto the shaft groove (T) with a rubber mallet.



- 17. Ensure the dust cap is properly seated in the groove by rotating it by hand.



- 18.

DIGITAL DOCUMENTATION



Using STUI, take a photo of the new steering shaft dust cover with the original (removed) dust cover in the same image.

Upload the photo to STUI.



19. Install the steering shaft assembly in reverse order of removal.
20. Perform **Dust Cover Noise Inspection Procedure** on page 3 to verify the repair.
21. The repair procedure is now complete.