



TECHNICAL SERVICE BULLETIN

Soft Top Material Wear Above B-Pillar

25-2439

19 September
2025

This bulletin supersedes 23-2229. Reason for update: update the labor times from M-time to fixed time and the Service Procedure.

Model:

Ford 2021-2022 Bronco	Soft Top
---------------------------------	----------

Markets: North American markets only

Issue: Some of the vehicles listed in the Model Statement may exhibit soft top exterior wear on the sides of the soft top material above the B-pillar. This may be due to contact and rubbing between the soft top frame and soft top material.

Action: For vehicles that meet the criteria in the Model and Issue statements above, follow the Service Procedure to modify the rear window.

Parts

Service Part Number	Claim Quantity	Package Order Quantity	Number in Package	Description
M2DZ-78500A67-A	1	1	1	Left Deflector
M2DZ-78500A67-B	1	1	1	Right Deflector
W790580-S900	25	7	4	Rivet
M2DZ-7852700-BB	1	1	1	Soft Top

Service part numbers and "number in package" quantity may change after publication, thus also affecting the "package order quantity". Refer to the parts catalog for the latest information.

Claim Quantity refers to the total number of individual pieces required to repair the vehicle.

Package Order Quantity refers to the amount of the service part number package(s) required to repair the vehicle.

Number In Package refers to the number of individual pieces included in a service part number package.

Warranty Status: Eligible under provisions of New Vehicle Limited Warranty (NVLW)/Service Part Warranty (SPW)/Service Part New Vehicle (SPNV)/Extended Service Plan (ESP) coverage. Limits/policies/prior approvals are not altered by a TSB. NVLW/SPW/SPNV/ESP coverage limits are determined by the identified causal part and verified using the OASIS part coverage tool.

Labor Times

Description	Operation No.	Time
2021-2022 Bronco: Inspect, Replace The Deflector And The Soft Top Cover, Includes Time To Vacuum Metal Shavings From Interior (Do Not Use With Any Other Labor Operations)	252439A	3.7 Hrs.

Repair/Claim Coding

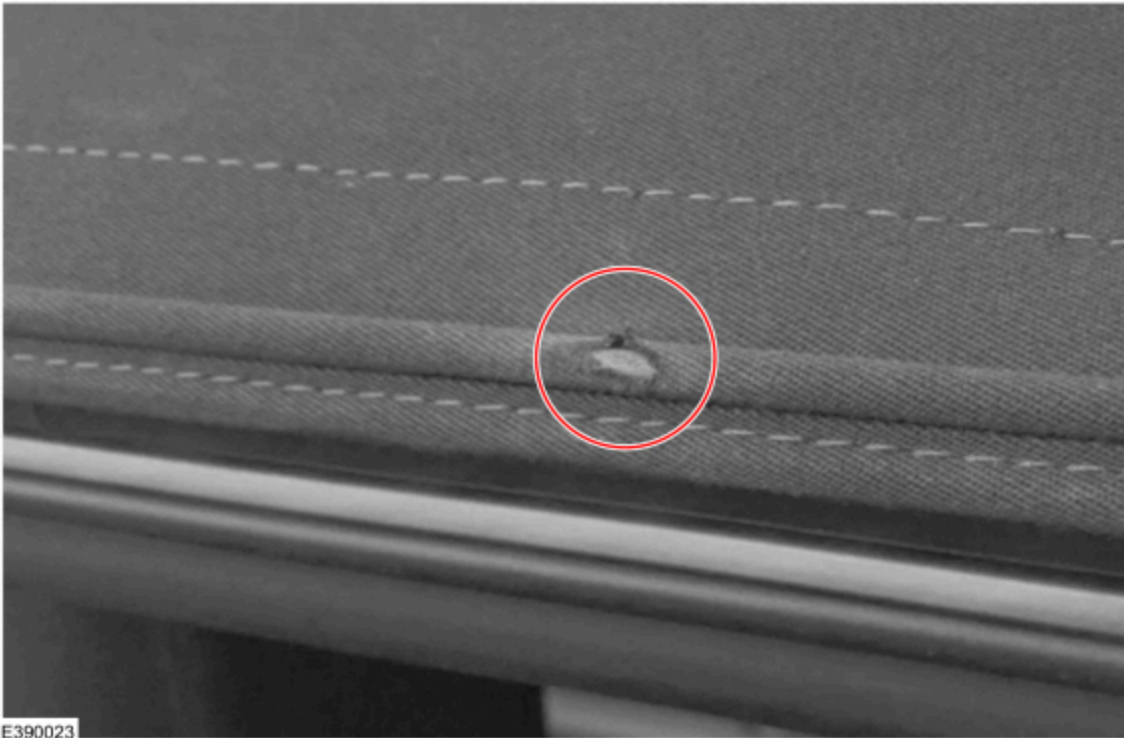
Causal Part:	7853000
Condition Code:	01

Service Procedure

NOTE: This procedure will be applied to both sides even if only one side shows wear.

1. Does the soft top exhibit wear above the B-pillar similar to Figure 1?

Figure 1



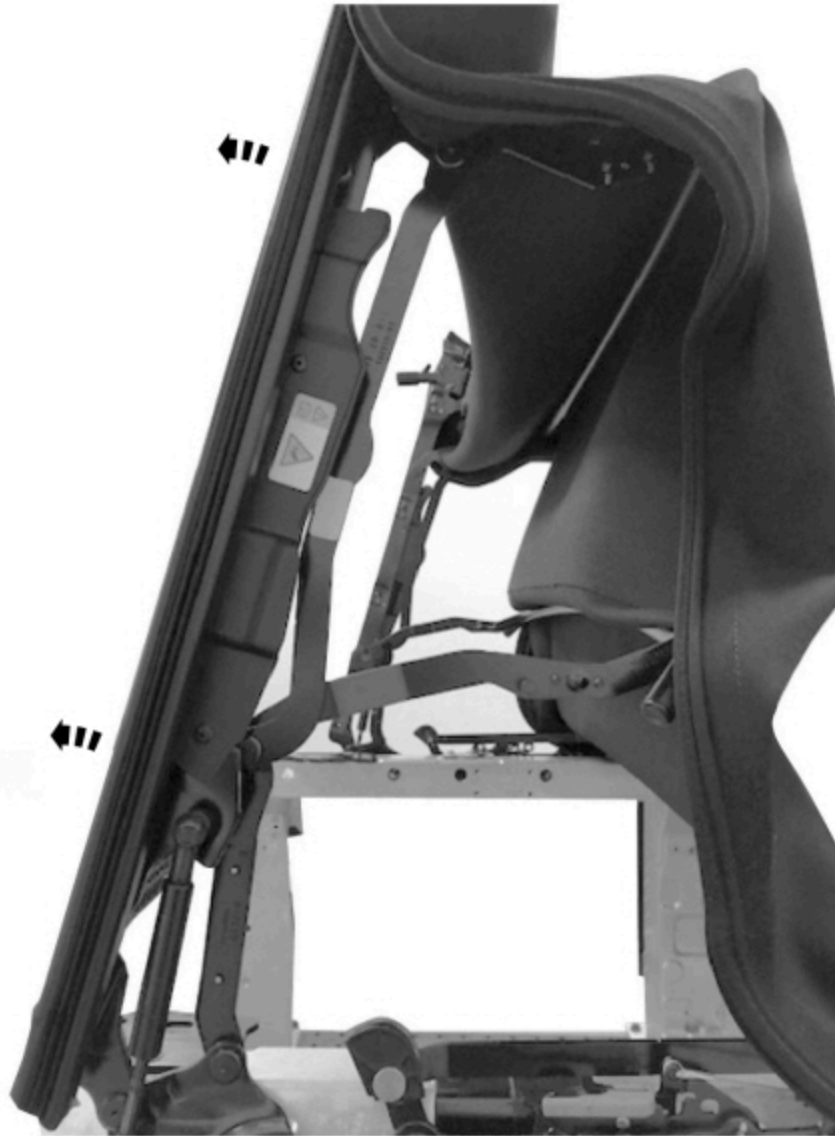
(1). Yes - proceed to Step 2. Updated deflectors will be installed on both sides of the soft top frame assembly to prevent wear.

(2). No - this article does not apply. Refer to the WSM, Section 501-18A for normal diagnostics.

2. Unlatch the 2 latches at the windshield header.

3. Open the soft top to 90° by pushing the soft top up and rearward. (Figure 2)

Figure 2

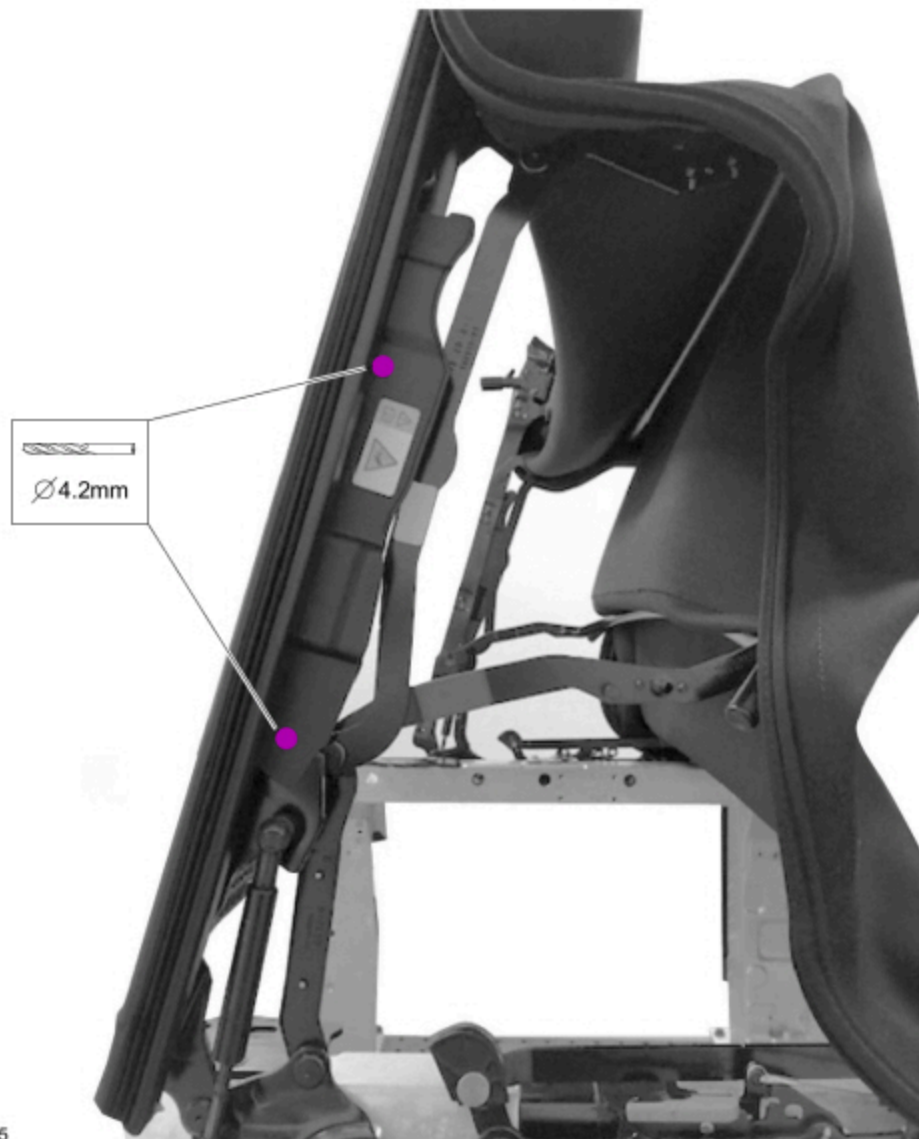


E390024

⚠ CAUTION: Do not drill through the linkage assembly. Only the head of the rivet should be drilled. Drilling through the linkage enlarges the hole where a new rivet will not fit to secure the linkage.

4. Locate each deflector on the right and left side of the frame assembly and drill out 2 rivets per deflector using a 4.2 mm (11/64 in) drill bit. (Figure 3)

Figure 3

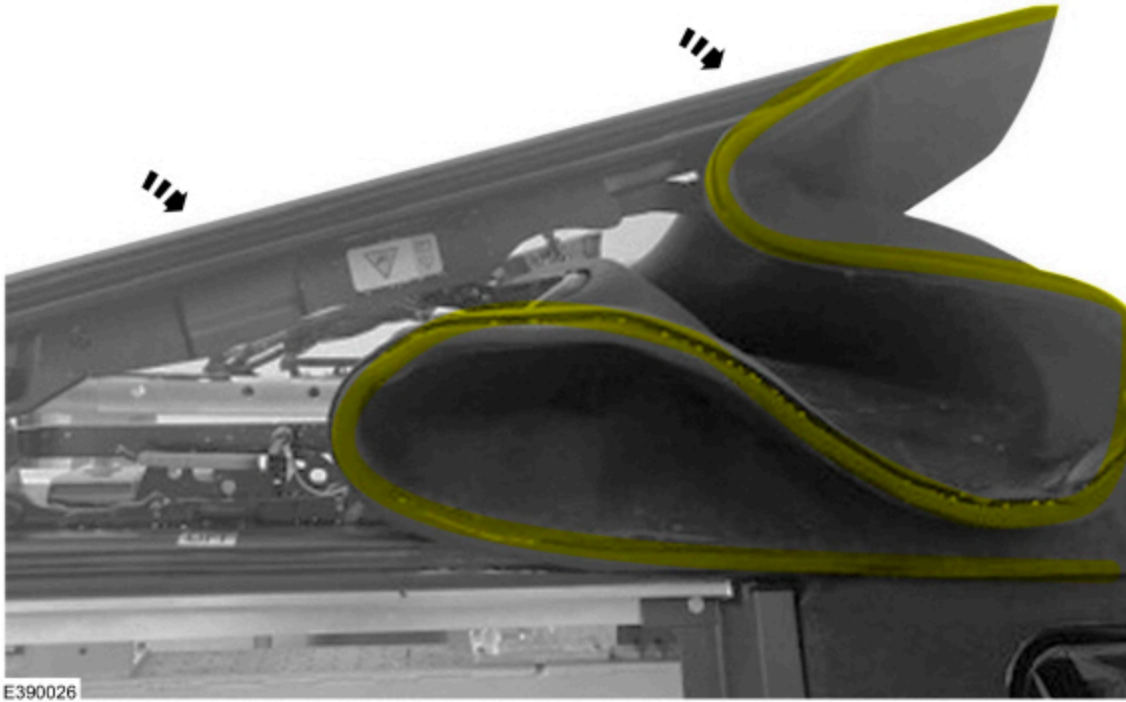


E390025

5. Attach an updated deflector on each side of the frame using rivets, securing the new deflector to the frame assembly starting from the front moving to the rear.
6. Remove and replace the soft top cover. Refer to the WSM, Section 501-18A Soft Top > Removal and Installation > Soft Top Material.

NOTE: When placing the soft top in the stowed position, make sure the fabric is positioned in an S pattern. (Figure 4)

Figure 4



© 2025 Ford Motor Company

All rights reserved.

NOTE: The information in Technical Service Bulletins is intended for use by trained, professional technicians with the knowledge, tools, and equipment to do the job properly and safely. It informs these technicians of conditions that may occur on some vehicles, or provides information that could assist in proper vehicle service. The procedures should not be performed by "do-it-yourselfers". Do not assume that a condition described affects your car or truck. Contact a Ford or Lincoln dealership to determine whether the Bulletin applies to your vehicle. Warranty Policy and Extended Service Plan documentation determine Warranty and/or Extended Service Plan coverage unless stated otherwise in the TSB article. The information in this Technical Service Bulletin (TSB) was current at the time of printing. Ford Motor Company reserves the right to supersede this information with updates. The most recent information is available through Ford Motor Company's on-line technical resources.