



TECHNICAL SERVICE BULLETIN

Center Panel Turn Handles Come Loose While Driving

25-2433

15 September
2025

Model:

Ford 2021-2025 Bronco	5-Door Hard Top
---------------------------------	--------------------

Markets: North American markets only

Issue: Some of the vehicles listed in the Model statement above may exhibit the hard top center panel's quarter turn latches come loose while driving.

Action: For vehicles that meet all of the criteria in the Issue and Model statements, follow the Service Procedure to correct the condition.

Parts

Service Part Number	Claim Quantity	Package Order Quantity	Description
Obtain Locally	As Needed (Up To 1)	As Needed (Up To 1)	Krytox™ GPL 205 Grease
PM-13-B	As Needed (Up To 1)	As Needed (Up To 1)	Motorcraft® Anti-Corrosion Coating

Service part numbers and "number in package" quantity may change after publication, thus also affecting the "package order quantity". Refer to the parts catalog for the latest information.

Claim Quantity refers to the total number of individual pieces required to repair the vehicle.

Package Order Quantity refers to the amount of the service part number package(s) required to repair the vehicle.

As Needed indicates the part is necessary but amount of the part may vary and/or is not a whole number. Parts can be billed out as non-whole numbers, including less than 1.

Warranty Status: Eligible under provisions of New Vehicle Limited Warranty (NVLW)/Service Part Warranty (SPW)/Service Part New Vehicle (SPNV)/Extended Service Plan (ESP) coverage. Limits/policies/prior approvals are not altered by a TSB. NVLW/SPW/SPNV/ESP coverage limits are determined by the identified causal part and verified using the OASIS part coverage tool.

Labor Times

Description	Operation No.	Time
2021-2025 Bronco: Repair Hard Top Latches Following The Service Procedure. (Do Not Use With Any Other Labor Operations)	252433A	0.5 Hrs.

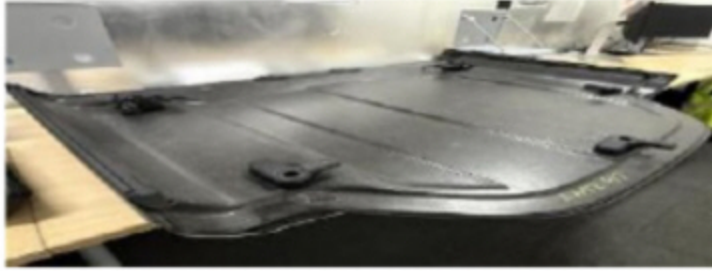
Repair/Claim Coding

Causal Part:	78205G35
Condition Code:	14

Service Procedure

1. Remove the hard top center panel and place it on a clean and even surface with the latches facing up. Refer to [WSM](#), Section 501-18B Removal and Installation > Hard Top Center Panel. (Figure 1)

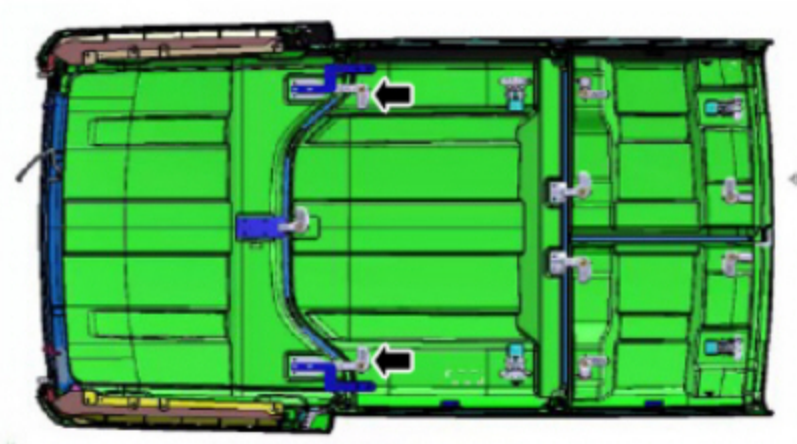
Figure 1



E459090

2. Remove the left and right hard top turn handles. Refer to WSM, Section 501-18B Removal and Installation > Hard Top Turn Handle. (Figure 2)

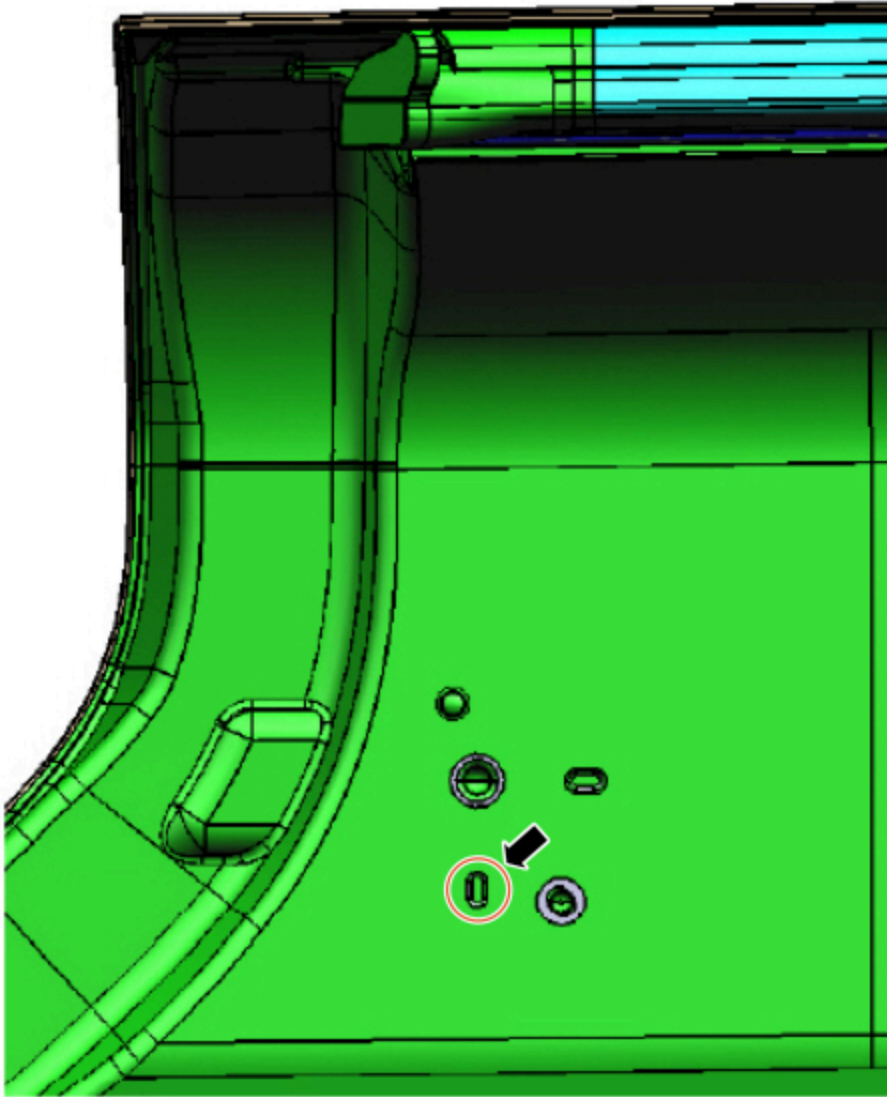
Figure 2



E459091

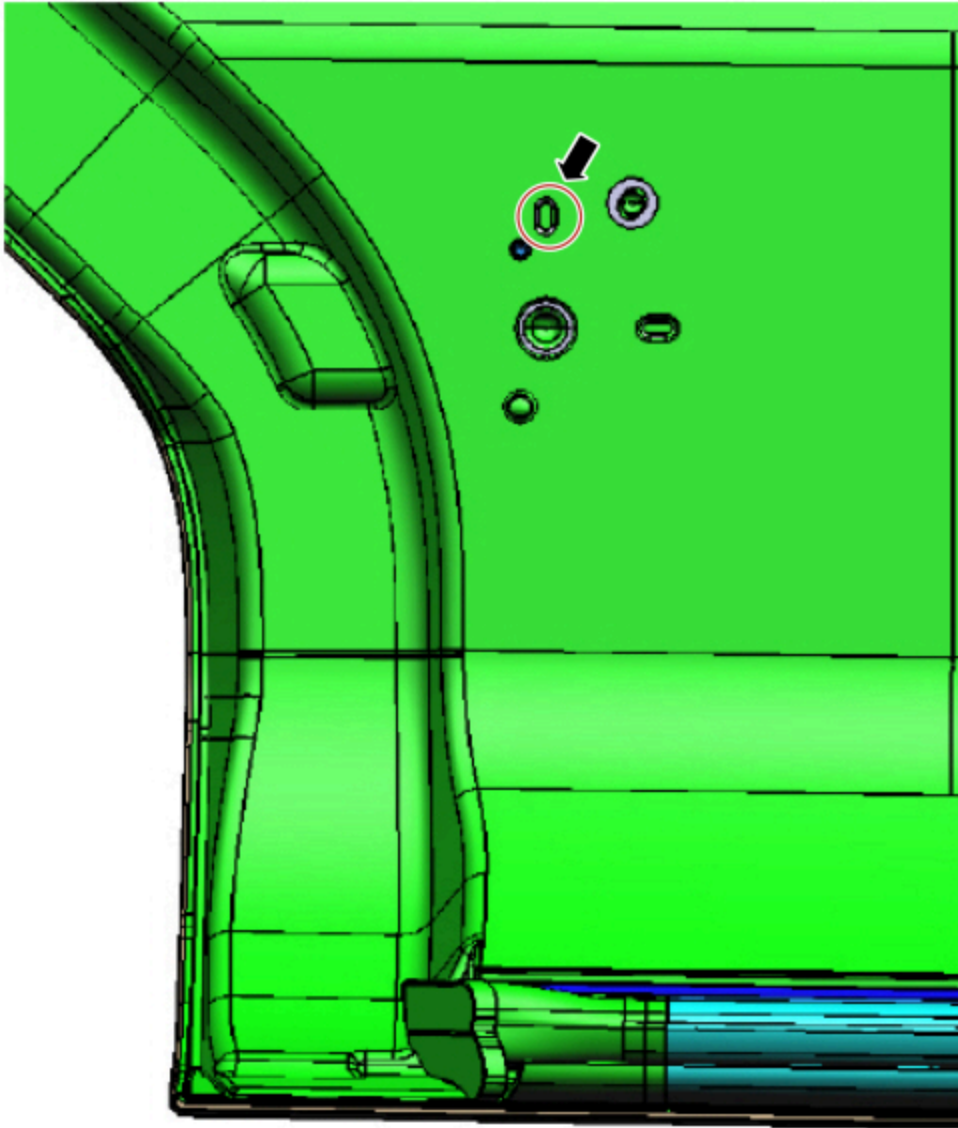
3. Identify the closed position detent ball indentation. (Figures 3-4).

Figure 3 - Left side shown



E459092

Figure 4 - Right side shown



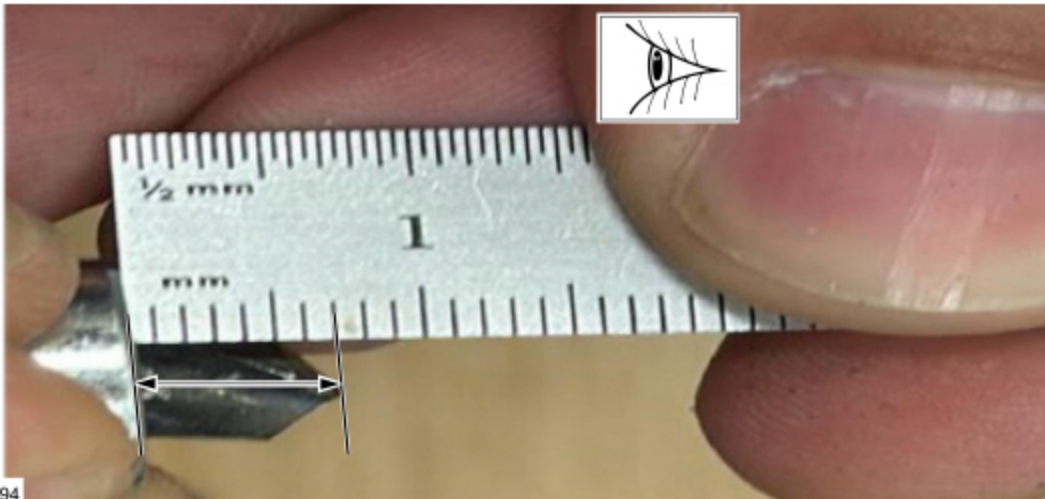
E459093

⚠ CAUTION: The roof panel consists of a soft substrate wrapped around a steel panel insert. When drilling, steady pressure is needed to drill through the steel panel, but care should be taken so that once the bit drills through the steel it does not continue through the backside of the panel.

4. Using a 1/4-inch (6.35 mm) drill bit, drill the closed position detent ball indentation to a depth of 0.28 inches (7mm) on both left and right hand sides of the hard top center panel. This will allow the closed position detent ball on the hard top turn handle to fully seat.

(1). Mark the drill bit 0.28 inches (7mm) from the tip of the drill bit (Figure 5). Do not use a drill bit stop collar.

Figure 5



5. Clean the area of debris left behind after drilling and coat the exposed steel with Motorcraft® Anti-Corrosion Coating.

NOTE: To make sure that the coating reaches and properly coats the exposed steel panel, the coating can be applied onto a piece of paper and applied to the now exposed steel using a brush or utensil.

6. After the coating is dry, reinstall both turn handles. Refer to WSM, Section 501-18B Removal and Installation > Hard Top Turn Handle.

7. On both, the turn handles and the receivers for the left and right side, apply a thin coating of Krytox™ GPL 205 grease. (Figures 6-7)

Figure 6

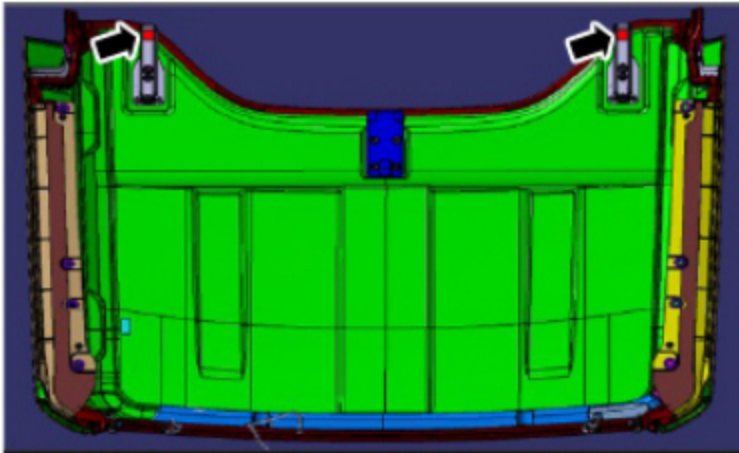


Figure 7



E459096

8. Reinstall the hard top center panel onto the vehicle.
9. Once the hard top center panel is installed, cycle the turn handles to the locked and unlocked position 4-6 times.
10. After the latches are cycled and in the locked position, clean the latches of any excess buildup of grease.
(Figures 8-9)

Figure 8



E459097

Figure 9



E459098

11. Reassemble the vehicle.

© 2025 Ford Motor Company

All rights reserved.

NOTE: The information in Technical Service Bulletins is intended for use by trained, professional technicians with the knowledge, tools, and equipment to do the job properly and safely. It informs these technicians of conditions that may occur on some vehicles, or provides information that could assist in proper vehicle service. The procedures should not be performed by "do-it-yourselfers". Do not assume that a condition described affects your car or truck. Contact a Ford or Lincoln dealership to determine whether the Bulletin applies to your vehicle. Warranty Policy and Extended Service Plan documentation determine Warranty and/or Extended Service Plan coverage unless stated otherwise in the TSB article. The information in this Technical Service Bulletin (TSB) was current at the time of printing. Ford Motor Company reserves the right to supersede this information with updates. The most recent information is available through Ford Motor Company's on-line technical resources.