



TECHNICAL SERVICE BULLETIN

| | | |
|-----------------------------|-------------------------|-----------------------------|
| Classification: BT25-010 | Reference: NTB25-042 | Date: September 10, 2025 |
|-----------------------------|-------------------------|-----------------------------|

EXCESSIVE WIND NOISE FROM WINDSHIELD AREA

APPLIED VEHICLES: 2022-2025 Frontier (D41)

IF YOU CONFIRM

The customer states there is a screeching, humming, buzzing, whistling and/or squealing type wind noise from the windshield/roof area of the vehicle,

AND

The wind noise is most noticeable at speeds of 50 mph or higher.

ACTION

Use the SERVICE PROCEDURE starting on page 4 to install two (2) pieces of foam (one on each side) between the windshield molding and the body roof line.

IMPORTANT: The purpose of **ACTION** (above) is to give you a quick idea of the work you will be performing. You **MUST** closely follow the entire **SERVICE PROCEDURE** as it contains information that is essential to successfully completing this repair.

Bulletins are intended for use by qualified technicians, not 'do-it-yourselfers'. Qualified technicians are properly trained individuals who have the equipment, tools, safety instruction, and know-how to do a job properly and safely. **NOTE:** If you believe that a described condition may apply to a particular vehicle, **DO NOT** assume that it does. See your Nissan dealer to determine if this applies to your vehicle.

REQUIRED TOOLS AND MATERIALS

Trim/Finesse tool (two required)

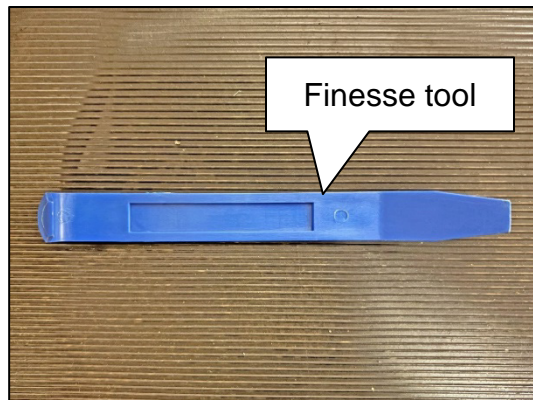


Figure 1

EPDM Semi Closed Cell Foam 10 mm (J-50397-2)



Figure 2

Masking tape



Figure 3

Metal ruler

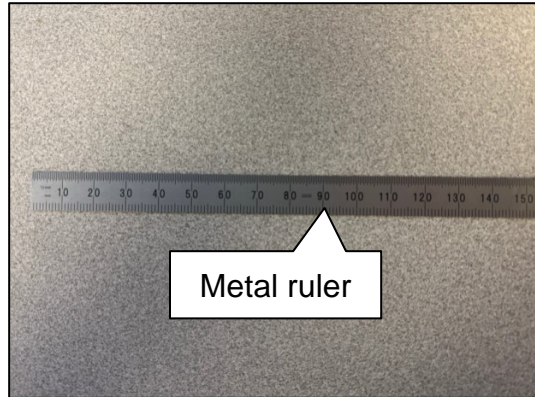


Figure 4

SERVICE PROCEDURE

For this service procedure, two (2) pieces of foam (one on each side) will be installed behind the windshield molding, near the roof ditch line.

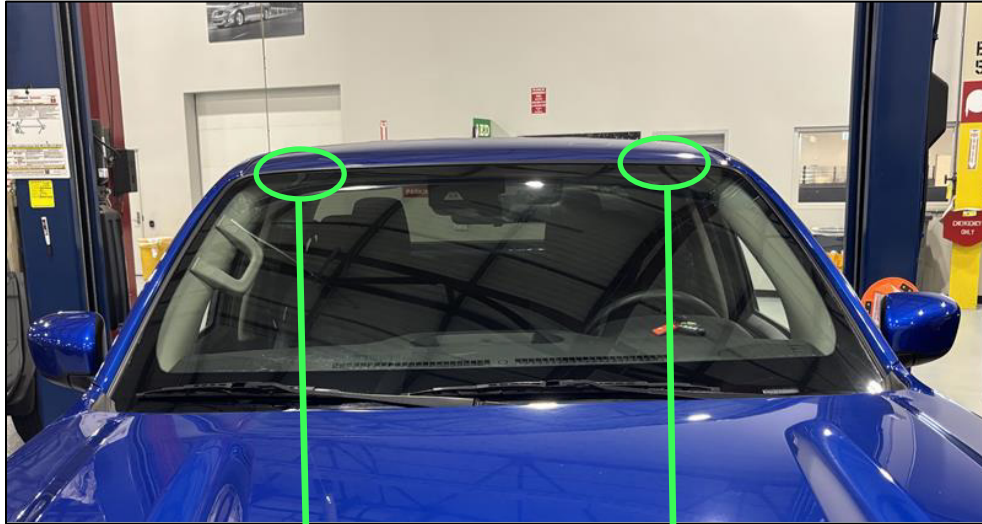


Figure 5

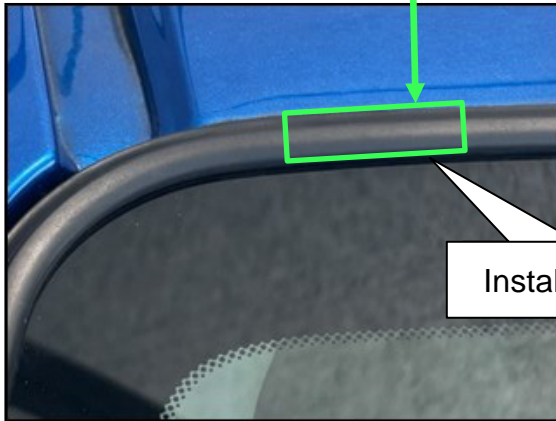


Figure 6

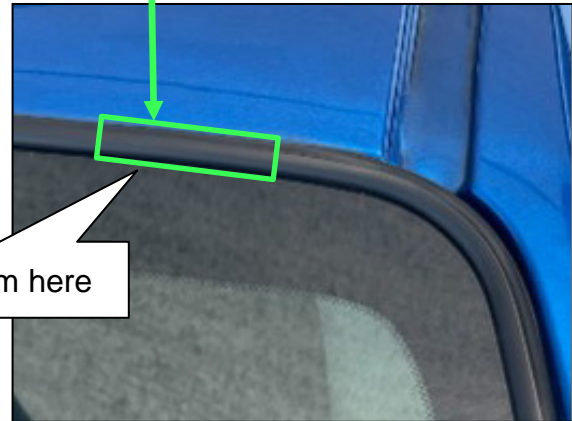


Figure 7

The following Figures are of the Passenger (RH) side. The Driver (LH) side is similar.

1. Ensure work area is free of dirt and debris.



Figure 8

2. Place masking tape over the painted surface, as shown in Figure 9.
 - Ensure the masking tape is placed slightly over the front edge of the roof panel.
 - Use a finesse tool to pull the windshield molding away from the roof slightly and tuck the front edge of the masking tape over the front edge of the roof to protect the paint.



Figure 9

3. Ensure the masking tape is fully tucked behind the windshield molding.



Figure 10

4. Place a flat ruler on the masking tape and align the starting edge with the roof ditch inner edge, as shown in Figure 11.
5. Using a ruler, measure 25 mm from the roof ditch inner edge and place a reference mark.

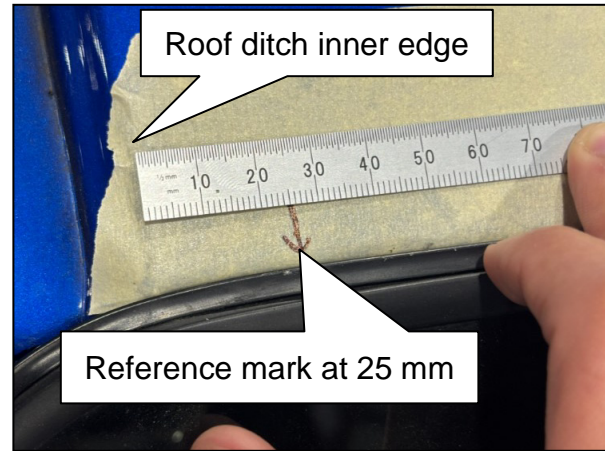


Figure 11

6. Obtain EPDM Semi Closed Cell Foam (10 mm).



Figure 12

HINT: J-50397-2 EPDM Semi Closed Cell Foam (10 mm) is included in the Squeak & Rattle Kit. Replacement foam is available from Tech•Mate online: www.techmatetools.com, or by phone: 1-833-397-3493.

When ordering, keep in mind that the tool part number prefix has changed from “J” to “NI”. For example, J-50397-2 is now NI-50397-2.



Figure 13

7. Cut two (2) pieces of foam 25 mm long by 15 mm wide.

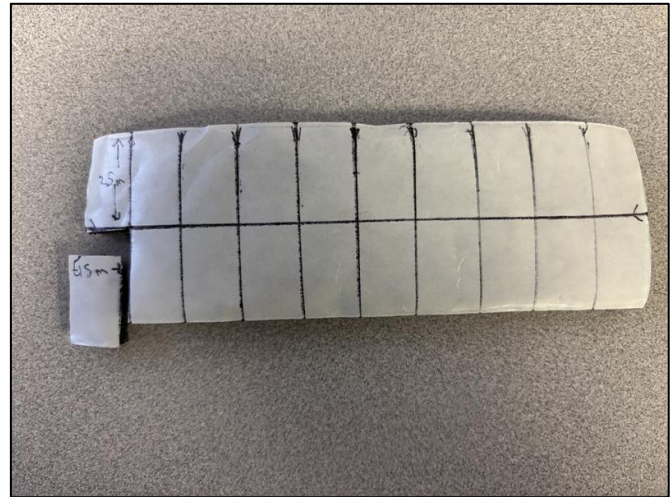


Figure 14

8. Carefully remove the backing from both pieces of foam, along with a very thin layer of foam (the remaining foam should not have any remaining adhesive and should still be near 10 mm thick).

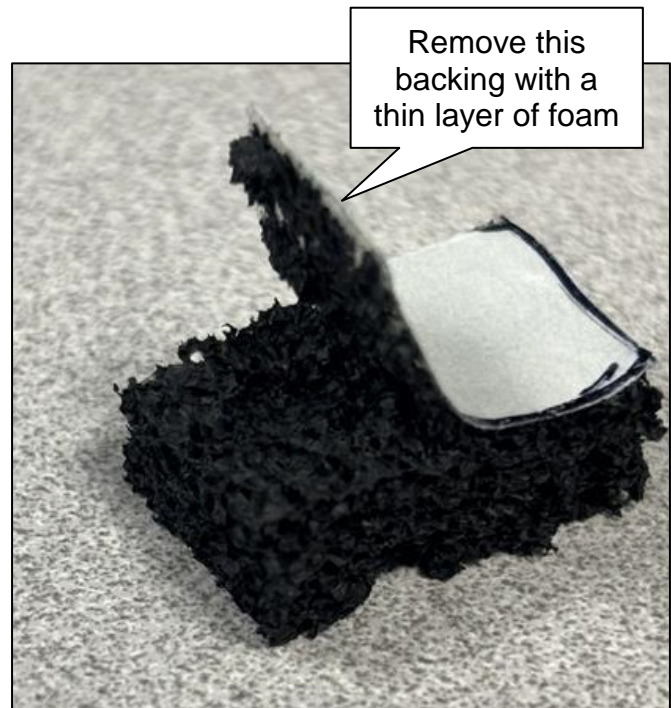


Figure 15

9. Place and align one (1) piece of foam with the reference mark made earlier, as shown in Figure 16.

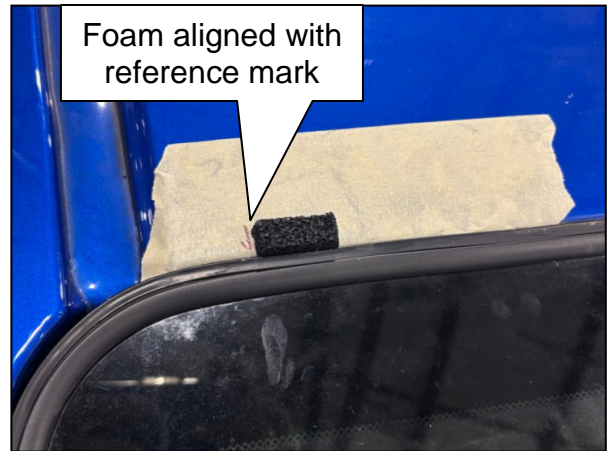


Figure 16

10. Place one (1) finesse tool underneath the windshield molding, on each side of the foam, as shown in Figure 17.

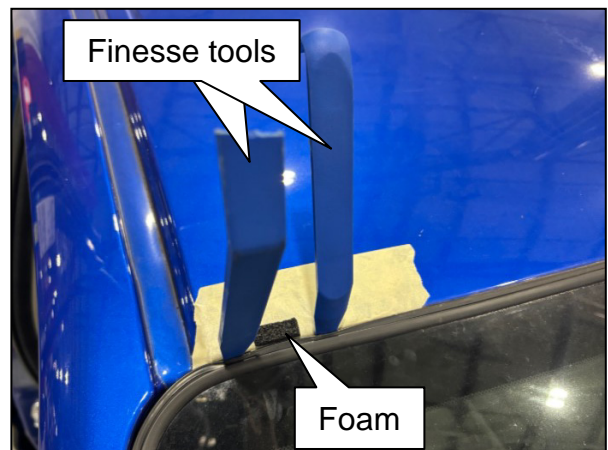


Figure 17

- Using a metal ruler or thin, flexible metal tool, push the foam down evenly beneath the windshield molding, as shown in Figure 18.

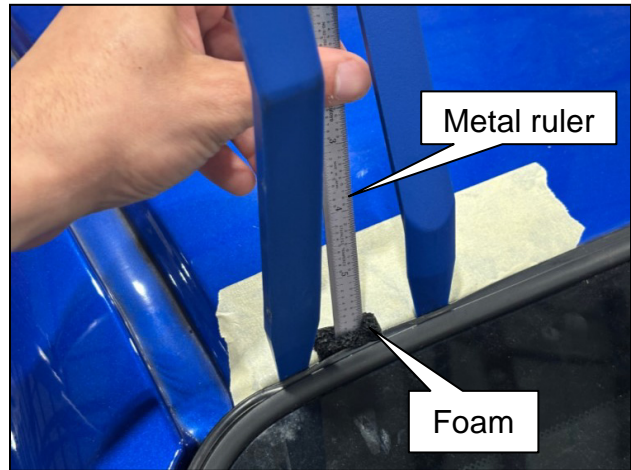


Figure 18

- Ensure the foam is pushed completely within the cavity formed by the roof metal and the windshield molding, as shown in Figure 19.

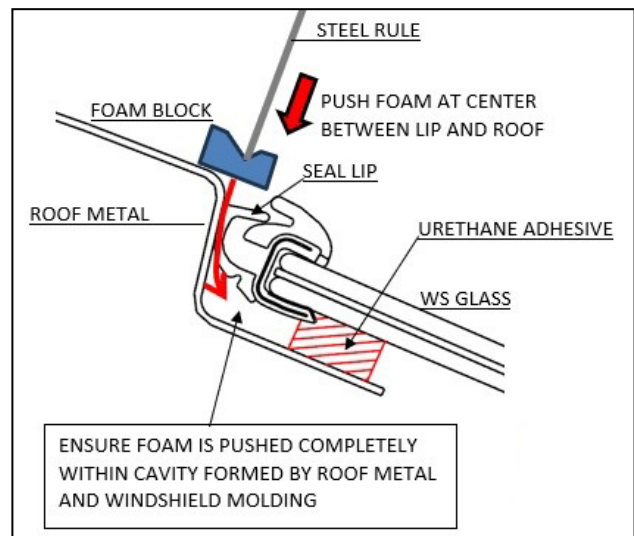


Figure 19

- Remove the finesse tools.

14. Confirm the foam was inserted properly by checking for gaps or bulges in the windshield molding (Figure 20 and Figure 21).
 - Correct any gaps or bulges in the windshield molding by adjusting the location of the foam.

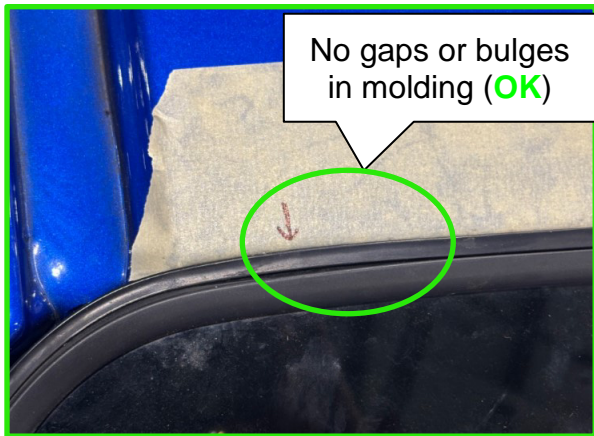


Figure 20

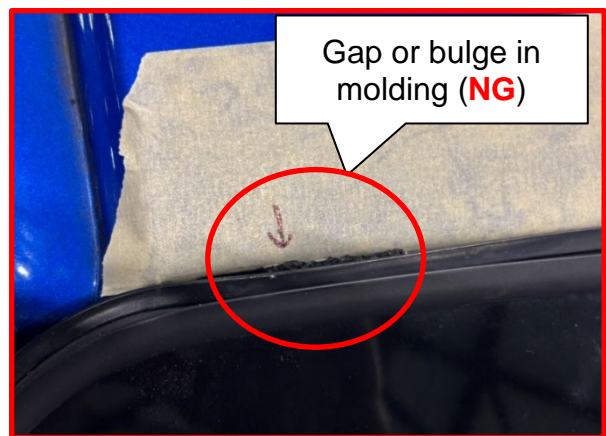


Figure 21

15. Remove the masking tape and clean the area of any residue.



Figure 22

16. Repeat steps 1-15 on pages 5-10 for the opposite side of the vehicle.
17. Confirm the excessive wind noise is no longer present.

PARTS INFORMATION

| DESCRIPTION | PART NUMBER | QUANTITY |
|------------------------------------|----------------|----------|
| EPDM SEMI CLOSED CELL FOAM (10 mm) | NI-50397-2 (1) | (2) |

- (1) NI-50397-2 EPDM Semi Closed Cell Foam (10 mm) is included in the Squeak & Rattle Kit (NI-50397A). Replacement foam is available from Tech•Mate online: www.techmatetools.com, or by phone: 1-833-397-3493.
- (2) See **EXPENSE CODE**.

CLAIMS INFORMATION

Submit a Primary Part (PP) type line claim using the following claims coding:

| DESCRIPTION | PFP | OP CODE | SYM | DIA | FRT |
|-------------------------------------|-----|---------|-----|-----|-----|
| Add Foam to Windshield Molding Area | (1) | BX8WAA | ZM | 32 | 0.5 |

- (1) Reference the electronic parts catalog and use the Center Upper Windshield Molding (72752-*****) as the Primary Failed Part (**PFP**).

EXPENSE CODE

| EXPENSE CODE | DESCRIPTION | MAX AMOUNT |
|--------------|--------------|------------|
| 071 | Foam Pad (1) | \$0.64 |

- (1) This pack of EPDM Semi Closed Cell Soft Foam will cover 36 vehicles.

AMENDMENT HISTORY

| PUBLISHED DATE | REFERENCE | DESCRIPTION |
|--------------------|-----------|-----------------------------|
| September 10, 2025 | NTB25-042 | Original bulletin published |