



Maserati

PERSONAL SERVICE LAB

MASTERS OF CARE

Grecale Front Camera Bracket Inspection and Repair

DATE: September 8, 2025

This bulletin provides guidance for diagnosing customer concerns related to driver assistance features when specific warnings or DTCs are present. The goal is to quickly identify potential damage to the front camera bracket, avoid unnecessary downtime, and ensure the appropriate corrective action is taken.

MODELS: M182 Grecale (All MY).

WORKSDHOP SECTION: 09.34-1 – GLASS, CRYSTALS AND GASKETS.

Customer Concern

Customers may report anomalies in driver assistance systems with instrument panel warnings such as:

- Forward Collision Warning not available
- Active Emergency Braking not available
- Adaptive Front Lighting System not available
- Automatic High Beams not available

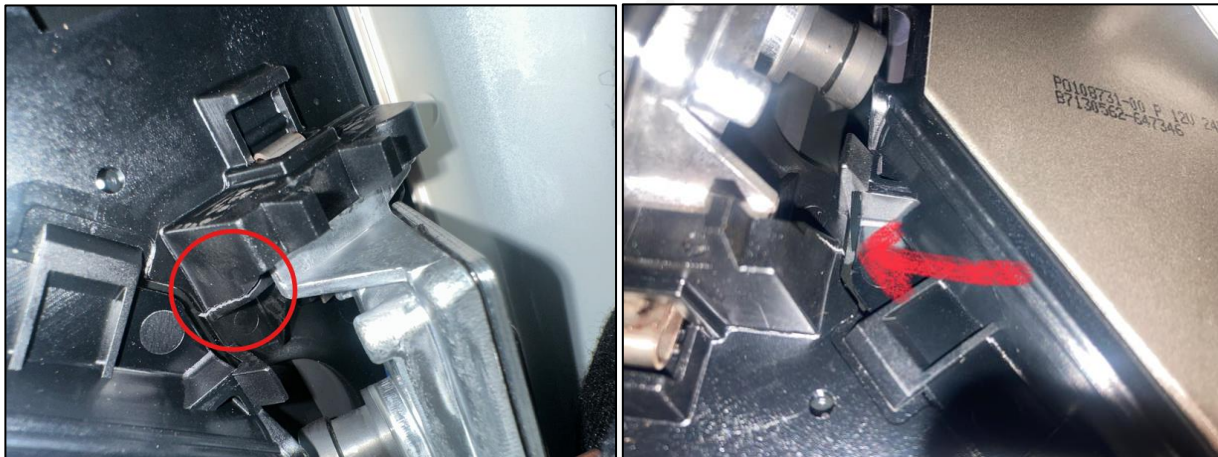
Diagnostic Trouble Codes (DTCs)

The following DTCs are commonly associated with these concerns, relating to the windshield-mounted camera:

ECU	DTC	Description
CADM	C008E-00	ECU Internal Performance
CADM	C2318-54	Front Camera – Missing Calibration
SLML	B23C5-96	Front Camera – Internal Component Failure
SLMR	B23C5-96	Front Camera – Internal Component Failure

Diagnostic Procedure

1. Inspect the **front camera bracket** on the inside of the windshield.
 - If damaged (see reference photos and videos provided):
 - Replace the windshield.
 - If no damage is found:
 - Continue with full diagnostic procedures per **Blue On Line (BOL)** policies.



Warranty Claim Information

DESCRIPTION	CODE
Defect	63 – Not compliant with specifications
Operation Code	
COMPLETE WINDSHIELD GLASS (Removal/Reattachment or Replacement)	9.34.001.1

Documentation Requirements

- Any warranty repair must include **evidence of the inspection and diagnosis steps**.
- Attach all required documentation to the corresponding **BOL case** (if required by policy) or directly to the **warranty claim**, in line with bulletins **MAS004777**.
- Maserati reserves the right to **deny or return claims** if evidence and attachments are missing or incomplete.

Notes

- Reference photos and attached videos are provided in this bulletin to support technician inspection.
- For clarification, contact Maserati Technical Support Operation