



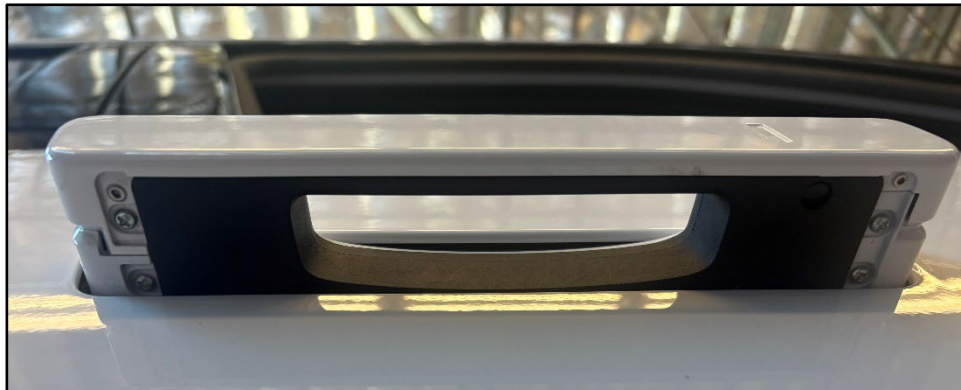
GROUP	MODEL
BOD	2025MY EV9 (MVa)
NUMBER	DATE
343	September 2025

## TECHNICAL SERVICE BULLETIN

### SERVICE ACTION: OUTSIDE DOOR HANDLE COVER SCREW REPLACEMENT (SA627)

SUBJECT:

This bulletin provides instructions to replace the outside door handle cover screws on certain 2025MY EV9 (MVa) vehicles, produced from May 30, 2024 through November 19, 2024, which may result in rust or corrosion marks under door handle, particularly in vehicles located in rainy and snowy climates. Follow the procedure outlined in this publication to replace all four (4) outside door handle screws (15 total) on the subject vehicle. Before proceeding, verify that the vehicle is included in the list of affected VINs.



#### NOTICE

**A Service Action is a repair program without customer notification that is performed during the warranty period. Any dealer requesting to perform this repair outside the warranty period will require DPSM approval.**

Repair status for a VIN is provided on KDealer+ (Service → Warranty Coverage → Warranty Coverage Inquiry → Campaign Information). Not completed Recall / Service Action reports are available on KDealer+ (Consumer Affairs → Not Completed Recall → Recall VIN → Select Report), which includes a list of affected vehicles.

This issue number is **SA627**.

# SERVICE ACTION: OUTSIDE DOOR HANDLE COVER SCREW REPLACEMENT (SA627)

## Repair Procedure:

1. Ensure all four (4) door handles are fully retracted (the doors should be in the deployment position).



### TECH TIP

If needed, adhere a piece of paper to the doors just below the door handle to add protection while working.



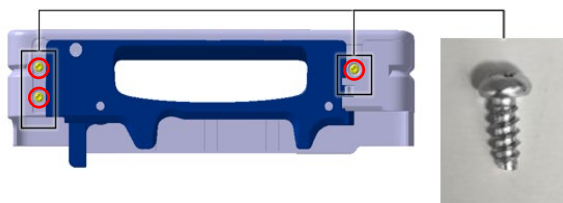
### CAUTION

To prevent damage or scratching to the door surface, do not use power tools during this procedure.

2. Work on one (1) door at a time, repeat the following steps on all four (4) outside door handles.

Using a #1 phillips screwdriver, remove the four (4) door handle retaining screws.

The left front driver outside door handle has three (3) screws as shown below.




**SERVICE ACTION: OUTSIDE DOOR HANDLE COVER SCREW REPLACEMENT (SA627)**

3. Install the four (4) new outside door handle screws.

**Note: One (1) bag contains 15 screws.**

**ⓘ IMPORTANT**  
 Apply Blue Loctite 243 to each screw thread before installation.

 Tightening torque for door handle screws:  
 1.8 in.ft (0.2 N.m)





4. Verify normal operation of the outside door handles.

**AFFECTED VEHICLE RANGE:**

Model	Production Date Range
MVa (EV9)	May 30, 2024 to November 19, 2024

**REQUIRED PART:**

Part Name	Part Number	Figure	Qty.	Comments
Loctite 243	N/A		1	Locally Sourced
Screws	826H0 XA000QQK		15	

**Note:** it is recommended that the part be ordered at the time the appointment is scheduled so that it can be available when the customer arrives at your dealer on the appointment date.

## SERVICE ACTION: OUTSIDE DOOR HANDLE COVER SCREW REPLACEMENT (SA627)

**WARRANTY INFORMATION:**

N Code: N99 C Code: C99

Claim Type	Causal P/N	Qty.	Repair Description	Labor Op Code	Op Time	Replacement P/N	Qty.
V	82650 XA110GWP	0	Outside door handle screw replacement (All Doors)	250A15R0	0.4 M/H	826H0 XA000QQK	15

For Substitute Transportation policy, please refer to [Service Policy and Procedures Manual \(SPPM\) 6.11 "Kia Substitute Transportation"](#).

**Note:** Use sublet code 'X1' with a maximum allowed amount of \$0.50 per vehicle for Loctite 243.

**NOTICE**

VIN inquiry data for this repair is provided for tracking purposes only. Kia retailers should reference [SA627](#) when accessing the WebDCS system.