



GROUP	MODEL
Subsequent Repair Action	2021-2023MY Soul (SK3) and Seltos (SP2) w/2.0L Nu MPI Engine
NUMBER	DATE
SC336YZ	September 2025

## SUBSEQUENT REPAIR ACTION

### ENGINE REPLACEMENT INSTRUCTIONS FOR DTC P1327 (SC336YZ)

SUBJECT:

This bulletin provides information related to the Technical Service Bulletin previously published under SC336 titled "Engine Inspection/Replacement and ECM Logic Improvement". Follow the procedure outlined in this publication to inspect and, if necessary, replace the engine. Before conducting the procedure, verify that the vehicle has completed the previously released campaign SC336 and is included in the list of affected vehicles.

#### DTC Description:

**P1327 / P132700 - Piston Noise Detection**

Model	Engine	Production Date Range
Soul (SK3)	2.0L NU MPI (Atkinson)	July 2, 2020 to April 19, 2022
Seltos (SP2)		July 2, 2020 to July 1, 2022

#### NOTICE

Repair status for a VIN is provided on KDealer+ (Service → Warranty Coverage → Warranty Coverage Inquiry → Campaign Information). Not completed Recall / Service Action reports are available on KDealer+ (Consumer Affairs → Not Completed Recall → Recall VIN → Select Report), which includes a list of affected vehicles.

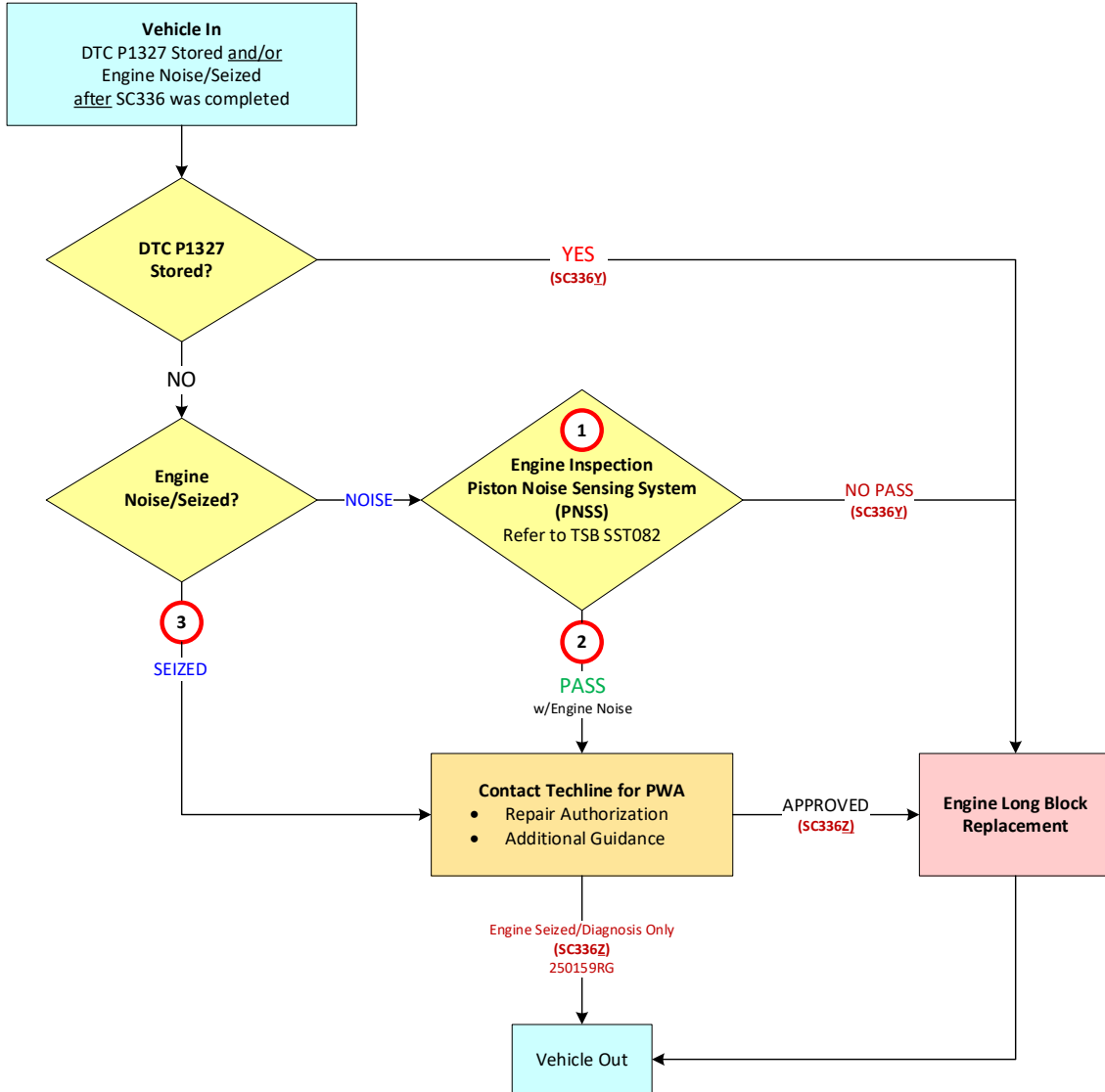
A printed copy is for reference only; publication information can be updated at any time. Always refer to KGIS for the latest information. After logging in kdealer.com, the newest technical publications are listed in 'Service Releases' and has the latest service information that has been released.

Kia America, Inc.

Flowchart:

Ensure that the latest KDS Tablet Software Version is **NNK-02-0084** or later.

If the software version is not the latest, contact GITA Support at: 888-542-4371.



**NOTICE**

**1. RETEST:** If there's an error on the measured engine vibration test, check the jack input (microphone) and knock sensor connection and perform measuring test again. If the results keep displaying 'RETEST' (more than 2 times), open a Techline case online for further instructions.

**2. PASS (Engine Noise):** If engine noise is present and the Engine Vibration Inspection results in a PASS, then open a Techline case online for further instructions.

**3. NO TEST:** If unable to perform an engine vibration inspection because the engine is seized, open a Techline case online for further instructions.



SUBJECT:

## ENGINE REPLACEMENT INSTRUCTIONS FOR DTC P1327 (SC336YZ)

## Inspection Procedure:

1. Refer to the Engine Vibration Inspection TSB [SST082](#).
  - Connect the PNSS testing harness to the engine and 12V battery ground.
  - Engine coolant temperature **MUST BE** above minimum test temperature: **185°F (85°C)**
  
2. Perform the PNSS Inspection using KDS and Inspection Harness.

**NOTICE**

Depending on the PNSS test result, an engine long block replacement may be required. [Be sure to follow the flowchart outlined on page 2.](#)

- 3a. [Pass](#): PNSS Inspection complete.
  
- 3b. [No Pass](#): PNSS Inspection complete + Engine R&R (see instructions below)

**\*For technical issues related to KDS PNSS Inspection, contact GITA Support: 888-542-4371.**

**IMPORTANT:** DO NOT USE a Samsung Headphone Jack Adapter (EE-UC10JJUWEGUS USB-C to 3.5mm) with tablets 'equipped' with a standard 3.5mm audio jack. (For example: SM T540/T630 models)





**SUBJECT: ENGINE REPLACEMENT INSTRUCTIONS FOR DTC P1327 (SC336YZ)**

**AFFECTED VEHICLE RANGE:**

Model	Production Date Range
Soul (SK3)	July 2, 2020 to April 19, 2022
Seltos (SP2)	July 2, 2020 to July 1, 2022

**REQUIRED TOOL: (REFER TO TSB SST082)**

Tool Name	Part Number	Figure	Comments
Kia Diagnostic System* (KDS)	N/A		KDS + VCI
Engine Vibration Inspection Harness	G1XTD CP200QQK		Located Toolbox 1, Drawer #12



\*For technical issues related to KDS PNSS Inspection, contact GITA Support: 888-542-4371.

**IMPORTANT: DO NOT USE a Samsung Headphone Jack Adapter** (EE-UC10JJUWEGUS USB-C to 3.5mm) with tablets 'equipped' with a standard 3.5mm audio jack. (For example: SM T540/T630 models)



**REQUIRED PART:**

**FOR ENGINE R&R: Place engine orders according to the newest test results for Re-Inspections.**

Model	Type	Part Name	Part Number	Figure	Qty.
Soul (SK3)	CVT	Engine Long Block (NU)	21101 123ZRQQKR*		1
	MT		21101 122ZRQQKR*		
Seltos (SP2KC)	CVT		21101 126ZRQQKR*		
ALL	N/A	Service Kit	21102 N20AKQQK		1
	N/A	Coolant Concentrate	UM022 CH271	N/A	1 Gal.
	0W-20	Full Synthetic Engine Oil Total Energies or Exxon Mobil	T0020 QRT12B or UM050 CH033	N/A	Up to 5qts.
	5W-20		T0520 QRT12A or UM050 CH034		

**Note:** The replacement QQK part numbers will require a VIN entry for parts ordering. Please be sure to expedite warranty claim filing. \*If the Reman part (QQKR) is not available, you may be allocated a part ending in QQK. If allocated a QQK part, this may be used in the repair and for the related warranty claim submission. \*\*Some engines may not require all kit components.



SUBJECT: ENGINE REPLACEMENT INSTRUCTIONS FOR DTC P1327 (SC336YZ)

WARRANTY INFORMATION: (SC336Y)

N Code: N99 C Code: C99

Model	Claim Type	Causal P/N	Qty.	Repair Description	Labor Op Code	Op Time	Replacement P/N	Qty.
All	R	23040 2E850	0	(SC336Y) Engine Vibration <u>Inspection Pass</u> (No DTC P1327 or Engine Noise)	250159R0	0.4 M/H	N/A	0

Model	Claim Type	Causal P/N	Qty.	Repair Description	Labor Op Code	Op Time	Replacement P/N	Qty.
SK3 (A/T)	R	23040 2E850	0	(SC336Y) DTC P1327 Stored (NG) Engine Replacement	250159R1	7.0 M/H	21101 123ZRQQKR	1
							21102 N20AKQQK	1
							UM022 CH271	1
							UM050 CH033 or UM050 CH034 or T0020 QRT12B or T0520 QRT12A	5
SK3 (M/T)	R	23040 2E101	0	(SC336Y) DTC P1327 Stored (NG) Engine Replacement	250159R2	7.0 M/H	21101 122ZRQQKR	1
							21102 N20AKQQK	1
							UM022 CH271	1
							UM050 CH033 or UM050 CH034 or T0020 QRT12B or T0520 QRT12A	5

**Note:** Refer to [Warranty Bulletin 2025-22](#) for claim submission procedures. If substitute transportation is necessary, manually enter sublet code 'X2' for rental expense reimbursement or one roundtrip rideshare expense. A copy of the rental/loaner invoice is required to be attached to the claim. Take a Photo of the Engine Noise Inspection Test Results (Pass, No Pass screen images) and attach to the claim.



SUBJECT: **ENGINE REPLACEMENT INSTRUCTIONS FOR DTC P1327 (SC336YZ)**

Model	Claim Type	Causal P/N	Qty.	Repair Description	Labor Op Code	Op Time	Replacement P/N	Qty.
SP2KC (FWD)	R	23040 2E850	0	(SC336Y) DTC P1327 Stored (NG) Engine Replacement	250159R3	6.3 M/H	21101 126ZRQQKR	1
							21102 N20AKQQK	1
							UM022 CH271	1
							UM050 CH033 or UM050 CH034 or T0020 QRT12B or T0520 QRT12A	5
SP2KC (AWD)	R	23040 2E850	0	(SC336Y) DTC P1327 Stored (NG) Engine Replacement	250159R4	6.6 M/H	21101 126ZRQQKR	1
							21102 N20AKQQK	1
							UM022 CH271	1
							UM050 CH033 or UM050 CH034 or T0020 QRT12B or T0520 QRT12A	5

Model	Claim Type	Causal P/N	Qty.	Repair Description	Labor Op Code	Op Time	Replacement P/N	Qty.
SK3 (A/T)	R	23040 2E850	0	(SC336Y) No DTC P1327 Stored Engine Inspection (NG) + Engine Replacement	250159R6	7.3 M/H	21101 123ZRQQKR	1
							21102 N20AKQQK	1
							UM022 CH271	1
							UM050 CH033 or UM050 CH034 or T0020 QRT12B or T0520 QRT12A	5
SK3 (M/T)	R	23040 2E101	0	(SC336Y) No DTC P1327 Stored Engine Inspection (NG) + Engine Replacement	250159R7	7.3 M/H	21101 122ZRQQKR	1
							21102 N20AKQQK	1
							UM022 CH271	1
							UM050 CH033 or UM050 CH034 or T0020 QRT12B or T0520 QRT12A	5



SUBJECT: **ENGINE REPLACEMENT INSTRUCTIONS FOR DTC P1327 (SC336YZ)**

Model	Claim Type	Causal P/N	Qty.	Repair Description	Labor Op Code	Op Time	Replacement P/N	Qty.
SP2KC (FWD)	R	23040 2E850	0	(SC336Y) No DTC P1327 Stored Engine Inspection (NG) + Engine Replacement	250159R8	6.6 M/H	21101 126ZRQQKR	1
							21102 N20AKQQK	1
							UM022 CH271	1
							UM050 CH033 or UM050 CH034 or T0020 QRT12B or T0520 QRT12A	5
SP2KC (AWD)	R	23040 2E850	0	(SC336Y) No DTC P1327 Stored Engine Inspection (NG) + Engine Replacement	250159R9	6.9 M/H	21101 126ZRQQKR	1
							21102 N20AKQQK	1
							UM022 CH271	1
							UM050 CH033 or UM050 CH034 or T0020 QRT12B or T0520 QRT12A	5

**Note:** Refer to [Warranty Bulletin 2025-22](#) for claim submission procedures. If substitute transportation is necessary, manually enter sublet code 'X2' for rental expense reimbursement or one roundtrip rideshare expense. A copy of the rental/loaner invoice is required to be attached to the claim. Take a Photo of the Engine Noise Inspection Test Results (Pass, No Pass screen images) and attach to the claim.

**NOTICE**

VIN inquiry data for this repair is provided for tracking purposes only. Kia retailers should reference [SC336YZ](#) when accessing the KDealer+ system.



SUBJECT:

**ENGINE REPLACEMENT INSTRUCTIONS FOR DTC P1327 (SC336YZ)**

**WARRANTY INFORMATION: (SC336Z)**

**N Code: N99 C Code: C99**

Model	Claim Type	Causal P/N	Qty.	Repair Description	Labor Op Code	Op Time	Replacement P/N	Qty.
SK3 (A/T)		23040 2E850	0	(SC336Z) No Engine Inspection <b>Engine Noise/Seized</b> + Engine Replacement w/Techline Approval	250159RB	7.0 M/H	21101 123ZRQQKR	1
							21102 N20AKQQK	1
							UM022 CH271	1
							UM050 CH033 or UM050 CH034 or T0020 QRT12B or T0520 QRT12A	5
SK3 (M/T)		23040 2E101	0	(SC336Z) No Engine Inspection <b>Engine Noise/Seized</b> + Engine Replacement w/Techline Approval	250159RC	7.0 M/H	21101 122ZRQQKR	1
							21102 N20AKQQK	1
							UM022 CH271	1
							UM050 CH033 or UM050 CH034 or T0020 QRT12B or T0520 QRT12A	5

**Note:** Refer to [Warranty Bulletin 2025-22](#) for claim submission procedures. If substitute transportation is necessary, manually enter sublet code 'X2' for rental expense reimbursement or one roundtrip rideshare expense. A copy of the rental/loaner invoice is required to be attached to the claim. Take a Photo of the Engine Noise Inspection Test Results (Pass, No Pass screen images) and attach to the claim.

**NOTICE**

VIN inquiry data for this repair is provided for tracking purposes only. Kia retailers should reference [SC336YZ](#) when accessing the KDealer+ system.



SUBJECT: **ENGINE REPLACEMENT INSTRUCTIONS FOR DTC P1327 (SC336YZ)**

Model	Claim Type	Causal P/N	Qty.	Repair Description	Labor Op Code	Op Time	Replacement P/N	Qty.
SP2KC (FWD)	R	23040 2E850	0	(SC336Z) No Engine Inspection <b>Engine Noise/Seized</b> + Engine Replacement w/Techline Approval	250159RD	6.3 M/H	21101 126ZRQQKR	1
							21102 N20AKQQK	1
							UM022 CH271	1
							UM050 CH033 or UM050 CH034 or T0020 QRT12B or T0520 QRT12A	5
SP2KC (AWD)	R	23040 2E850	0	(SC336Z) No Engine Inspection <b>Engine Noise/Seized</b> + Engine Replacement w/Techline Approval	250159RE	6.6 M/H	21101 126ZRQQKR	1
							21102 N20AKQQK	1
							UM022 CH271	1
							UM050 CH033 or UM050 CH034 or T0020 QRT12B or T0520 QRT12A	5
All	R	23040 2E850	0	(SC336Z) <b>No Test</b> <b>Engine Inspection</b> w/Techline Approval (Engine Seized Diagnosis only)	250159RG	0.2 M/H	N/A	0

**Note:** Refer to [Warranty Bulletin 2025-22](#) for claim submission procedures. If substitute transportation is necessary, manually enter sublet code 'X2' for rental expense reimbursement or one roundtrip rideshare expense. A copy of the rental/loaner invoice is required to be attached to the claim. Take a Photo of the Engine Noise Inspection Test Results (Pass, No Pass screen images) and attach to the claim.

**NOTICE**

VIN inquiry data for this repair is provided for tracking purposes only. Kia retailers should reference **SC336YZ** when accessing the KDealer+ system.

