

**Sports Exhaust System - Silver (0P8) / Dark Bronze (0P9)**

Vehicle Type: **Cayenne (9YA)** including associated Coupé variant (9YB)

Model Year: **2024**

Engine Type: **DWH** (basic engine – TB5 / D1R) = 4.0-liter V8 biturbo engine

- **DWHB** = Cayenne S = 349 kW (475 hp)

Cause: **Installation**



**Information**

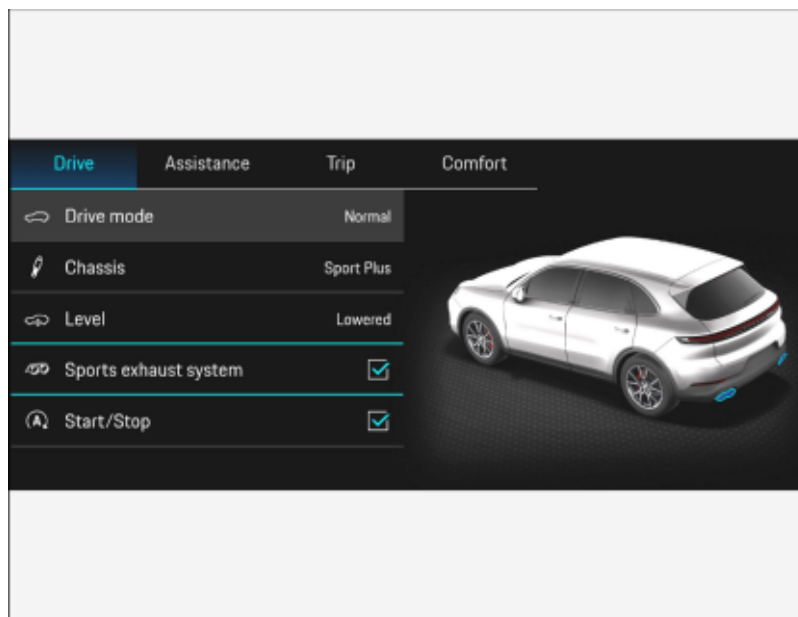


Figure 1

Notes: In the sports exhaust system, the signal for activating the flaps in the rear silencer (NSD) comes from the respective current map in the DME control unit. The driving status and accelerator pedal position, for example, are decisive factors.

The sports exhaust system can be switched on and off separately using the Porsche Communication Management system (PCM ⇒ Figure 1). To do this, select the menu "Car", then "Drive" and then "Exhaust system".

The sports exhaust system is also active in the "SPORT" or "SPORT PLUS" driving modes.

The engine power and exhaust behavior of the vehicle are not affected.

Under the individual equipment "OP8 - Sport exhaust system (tailpipe silver)" or "OP9 - Sport exhaust system (tailpipe dark bronze)", the sport exhaust system is also available ex works for new vehicles.

Parts Info:

**ONLY** for vehicles WITHOUT gasoline particulate filter (PPF; emissions concept = OGB / 7GH / 7MM / 7MU):

**9Y0.044.230** ⇒ Sports exhaust system (OP8) –Tailpipe silver–, set

**9Y0.044.230.A** ⇒ Sports exhaust system (OP9) –Tailpipe dark bronze–, set

**N.105.184.05<sup>1</sup>** 1 x ⇒ Cheese-head screw with multiple-tooth socket head M8 x 30 - self-locking (Universal joint for steering gear)

<sup>1</sup> Also order the following **IF** necessary.

Parts list:

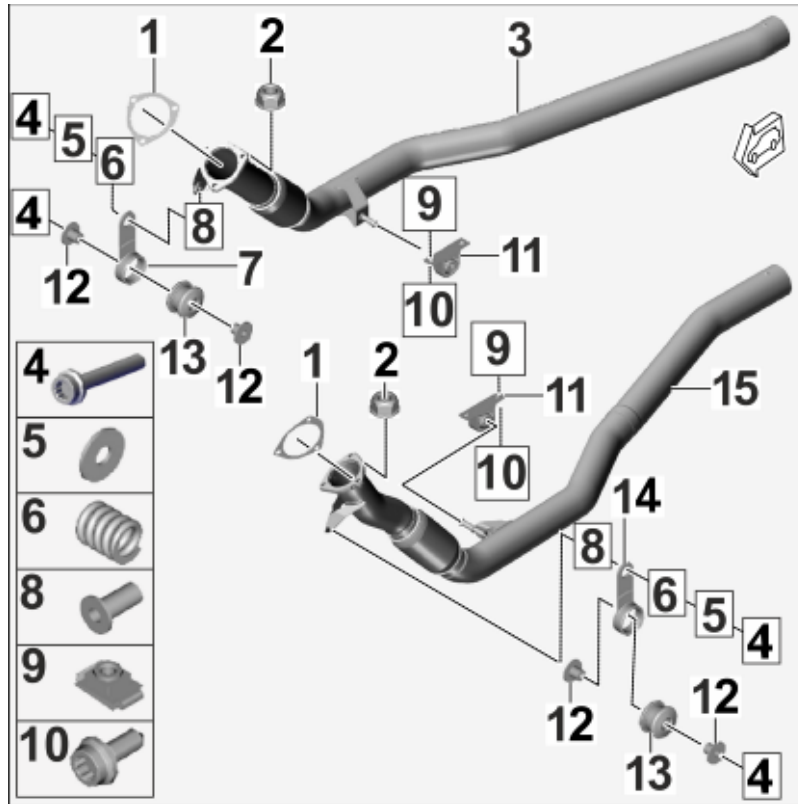


Figure 2

Scope of exhaust system – exhaust pipe area (only for vehicle WITHOUT PPF): ⇒ *Figure 2*

PAB.253.115.20	2 x	Seal (exhaust pipe / manifold) ⇒ <i>Figure 2 -1-</i>
PAF.911.308	6 x	Hexagon collar nut, M8, self-locking (flange manifold) ⇒ <i>Figure 2 -2-</i>
PAB.253.350.D	1 x	Assembly (ASSY) exhaust pipe – right (-PPF) ⇒ <i>Figure 2 -3-</i>
N.106.720.01	4 x	Cheese-head screw with multiple-tooth socket M8 x 50 (tab on exhaust pipe / transmission) ⇒ <i>Figure 2 -4-</i>
PAF.011.670.26	2 x	Washer, 8.4 x 24 x 2 (tab on exhaust pipe) ⇒ <i>Figure 2 -5-</i>
PAB.253.353.00	2 x	Pressure spring (tab) ⇒ <i>Figure 2 -6-</i>
PAC.253.295	1 x	Tab AL552 – right ⇒ <i>Figure 2 -7-</i>
PAB.253.205.00	2 x	Spacer tube, Ø 24 x 32 (upper tab) ⇒ <i>Figure 2 -8-</i>
4H0.821.213	4 x	Speed nut 28 x 18 x 11 12 ⇒ <i>Figure 2 -9-</i>
N.107.367.01	4 x	Cylinder collar screw with multiple-tooth socket M8 x 20 (exhaust pipe holder) ⇒ <i>Figure 2 -10-</i>
PAB.253.099	2 x	Exhaust pipe holder ⇒ <i>Figure 2 -11-</i>
PAB.253.205.A	4 x	Spacer tube, Ø 30 x 16 (lower tab) ⇒ <i>Figure 2 -12-</i>
PAB.253.149	2 x	Rubber bush, Ø 42 x 29 (lower tab) ⇒ <i>Figure 2 -13-</i>
PAB.253.295	1 x	Tab AL552 – left ⇒ <i>Figure 2 -14-</i>
PAB.253.350.J	1 x	Assembly (ASSY) exhaust pipe – left (-PPF) ⇒ <i>Figure 2 -15-</i>

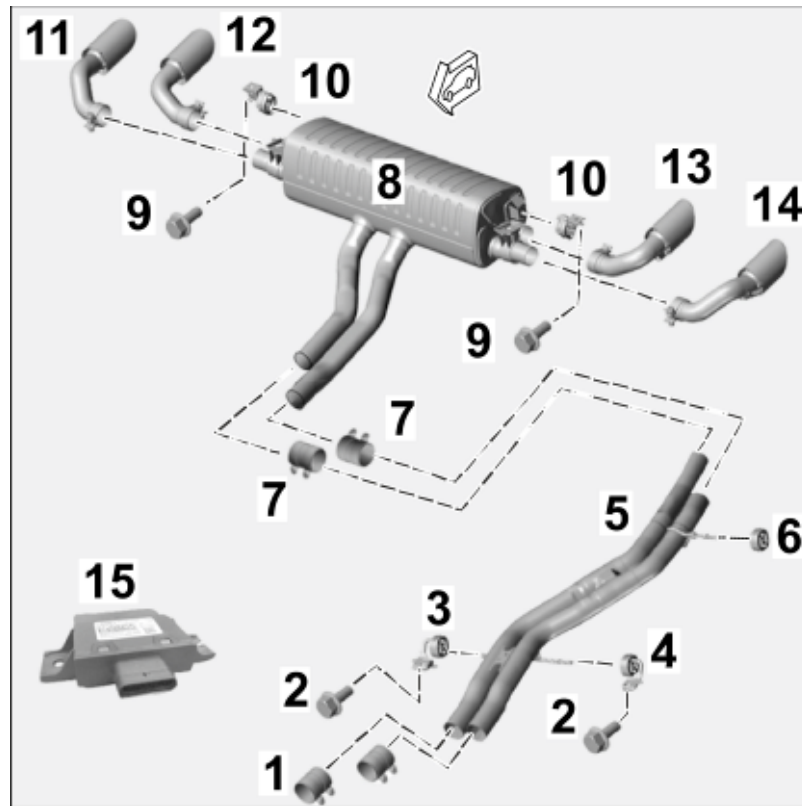


Figure 3

Scope of exhaust system – center, rear silencer (NSD) and sports tailpipes area (⇒ Figure 3):

9A7.253.141.00	2 x	Clamping sleeve, $\varnothing$ 70 x 79 ⇒ Figure 3 -1-
N.106.978.01	2 x	Hexagon-head bolt, M10 x 30 ⇒ Figure 3 -2-
PAB.253.144.01	1 x	Holder for center silencer (MSD), front right ⇒ Figure 3 -3-
PAB.253.144.10	1 x	Holder for center silencer, front, left ⇒ Figure 3 -4-
9Y0.253.088.H	1 x	Center silencer ASSY (MSD) ⇒ Figure 3 -5-
PAB.253.147.00	1 x	Center silencer (MSD) retaining ring, rear left ⇒ Figure 3 -6-
PAB.111.220.A	2 x	Clamping sleeve, $\varnothing$ 65 x 88 ⇒ Figure 3 -7-
9Y0.253.125.C	1 x	Rear silencer ASSY (NSD) ⇒ Figure 3 -8-
N.106.421.01	2 x	Hexagon-head bolt, M8 x 25 ⇒ Figure 3 -9-
PAB.253.144.03	2 x	Holder for rear silencer (NSD) ⇒ Figure 3 -10-
PAF.038.549	8 x	Expansion rivet, A8 x 12 (air guide for tunnel, underbody panelling, not shown)
N.106.296.02	8 x	Hexagon head screw M10 x 35 (underbody crossbeam, not shown)
9Y0.253.824.DG <sup>2</sup>	1 x	Sports tailpipe silver, outer right ⇒ Figure 3 -11-
9Y0.253.824.DL <sup>2</sup>	1 x	Sports tailpipe silver, inner right ⇒ Figure 3 -12-
9Y0.253.823.EC <sup>2</sup>	1 x	Sports tailpipe silver, inner left ⇒ Figure 3 -13-

9Y0.253.823.DQ <sup>2</sup>	1 x	Sports tailpipe silver, outer left ⇒ <i>Figure 3 -14-</i>
9Y0.253.824.DH <sup>2</sup>	1 x	Sports tailpipe dark bronze, outer right (not shown)
9Y0.253.824.DM <sup>2</sup>	1 x	Sports tailpipe dark bronze, inner right (not shown)
9Y0.253.823.ED <sup>2</sup>	1 x	Sports tailpipe dark bronze, inner left (not shown)
9Y0.253.823.DT <sup>2</sup>	1 x	Sports tailpipe dark bronze, outer left (not shown)
9Y0.907.159.CH	1 x	Engine noise control unit ⇒ <i>Figure 3 -15-</i>

2 **ONLY** contained in respective set.



**Information**

**ONLY** in the event of repairs/replacement:

Items **WITHOUT** a part number in the parts list can be found/ordered from the Porsche Electronic Parts Catalog = PET.

Check model year and vehicle equipment (I-no.) in the standard catalog!

Material: — — — 1 x Commercially available rust solvent, e.g. WD40



**Information**

Please pass all this information on to the customer.

Also give the customer a copy of the first pages of these Installation and Conversion Instructions, including the legal regulations.

- Tool:
- P90999 - P90999 - PIWIS Tester 4**
  - VAS 6935 - Pole terminal puller**
  - VAS 6931A - Transmission and gearbox jack**
  - V.A.G 1331A - Torque wrench 6-50 Nm (4.5-37 ftlb.)**

- Assembly:
- 1 Preparatory work
    - 1.1 Drive the vehicle onto a lifting platform and connect a battery charger. ⇒ *Workshop Manual '2X00IN Battery trickle charging'*
    - 1.2 Exposing the plenum panel area  
Remove the cowl panel cover. ⇒ *Workshop Manual '508719 Removing and installing cowl panel cover'*
    - 1.3 **ONLY** for vehicles **WITHOUT** gasoline particulate filter (PPF; emissions concept = OGB / 7GH / 7MM / 7MU):

- 1.3.1 Remove engine cover (design cover) (⇒ Figure 6 -2-). ⇒ Workshop Manual '108319A6 Removing and installing engine cover - TB5'

- 1 – Filling neck for windscreen-washer reservoir
- 2 – Engine cover (design cover)
- 3 – Strut brace (installation position of engine sound control unit)

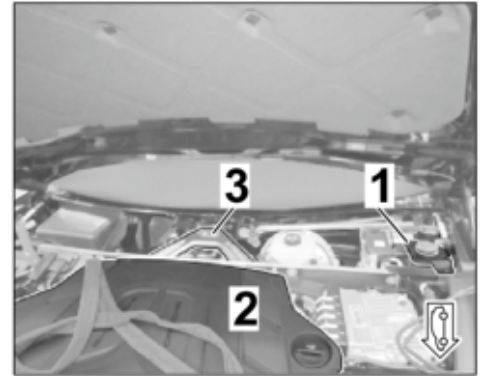


Figure 6

- 1.3.2 Remove air cleaner housing. ⇒ Workshop Manual '242519 Removing and installing air cleaner housing - T9I,TB5'
- 1.3.3 Raise the vehicle. ⇒ Workshop Manual '4X00IN Raising the vehicle'
- 1.3.4 Remove front underbody cover (rear section) (⇒ Figure 7 -3-). ⇒ Workshop Manual '51921900 Removing and installing front underbody cover'

**CAUTION**

**Hot components**

- **Risk of burns**
- ⇒ **Let hot components cool down.**
- ⇒ **Wear personal protective gear.**

- 1.3.5 Remove exhaust pipe (left / right). ⇒ Workshop Manual '261719A1 Remove and install exhaust pipe - TB5'
- 1.4 Raise the vehicle. ⇒ Workshop Manual '4X00IN Raising the vehicle'

- 1.5 Work in the exhaust system area
  - 1 – Rear underbody cover
  - 2 – Rear tunnel cover
  - 3 – Front underbody cover (rear section)
  - 4 – Tailpipe (left / right)

1.5.1 Remove rear underbody cover and rear tunnel cover (⇒ Figure 7 -1 and 2-). ⇒ Workshop Manual '519419 Removing and installing rear underbody cover'

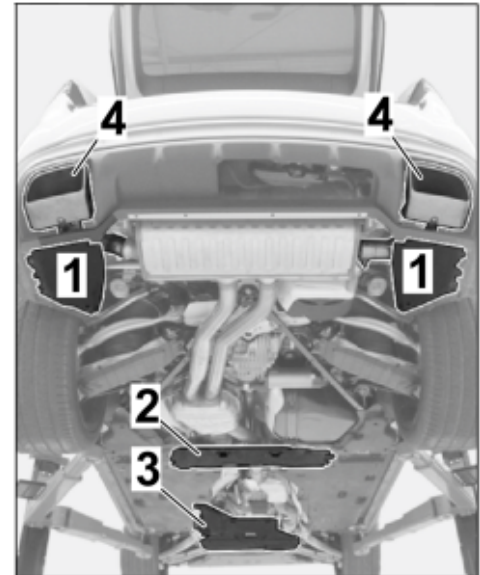


Figure 7

**⚠ CAUTION**

**Hot components**

- Risk of burns
- ⇒ Let hot components cool down.
- ⇒ Wear personal protective gear.

1.5.2 Remove tailpipe (left / right) (⇒ Figure 7 -4-). ⇒ Workshop Manual '263419A2 Remove and install tailpipe - TB5'

**⚠ CAUTION**

**Heavy components**

- Risk of squashing
- ⇒ Wear personal protective gear.
- ⇒ Get someone to help if necessary.

1.5.3 Remove exhaust system **WITHOUT** removing tunnel strut. ⇒ Workshop Manual '260119A6 Remove and install exhaust system - T1M, TB5'

2 Replace engine noise control unit ( ⇒ Workshop Manual '260619 Remove and install control unit for acoustic simulator')

2.1 Check whether there is a tie-wrap on the side tab on the new engine noise control unit. Remove the tie-wrap if necessary.

- 2.2 Disconnect plug connection for the standard engine noise control unit and remove engine noise control unit with holder.
- 2.3 Replacing engine noise control unit

2.3.1 Remove standard engine noise control unit from the strut brace.

2.3.2 Insert new engine noise control unit at the underside in the control unit holder. ⇒ *Figure 8 -A-*

- 1 – Engine noise control unit  
2 – Control unit holder  
3 – Locking / unlocking

2.3.3 Push the engine noise control unit in the holder to the opposite side of the plug connection (⇒ *Figure 8 -B-*) until control unit engages in the holder.

- 2.4 Create a plug connection between wire harness and mount control unit with holder on dome strut.

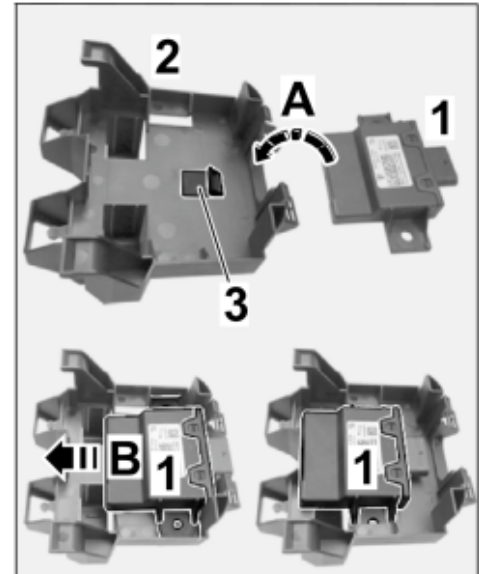


Figure 8

### 3 Installing new exhaust system

3.1 **ONLY** for vehicles WITHOUT gasoline particulate filter (PPF; emissions concept = OGB / 7GH / 7MM / 7MU):

3.1.1 Install exhaust pipe (left / right). ⇒ *Workshop Manual '261719A1 Remove and install exhaust pipe - TB5'*

**ONLY** for exhaust pipe on driver side: Install new cheese-head screw with multiple-tooth socket head M8 x 30, self-locking (Universal joint for steering gear).

Secure exhaust pipe (left / right) on the transmission support using restraining strap for securing loads or similar, to prevent it from folding down.

3.1.2 Install air cleaner housing. ⇒ *Workshop Manual '242519 Removing and installing air cleaner housing - T9I, TB5'*

3.1.3 Install engine cover (design cover). ⇒ *Workshop Manual '108319A6 Removing and installing engine cover - TB5'*

3.2 Install new center silencer with new clamping sleeve  $\varnothing 70 \times 79$ .  $\Rightarrow$  *Workshop Manual '262555A2 Replace front silencer - T9I, TB5'*

- 1 – Clamping sleeve,  $\varnothing 70 \times 79$
- 2 – Center silencer holder, front left
- 3 – Center silencer holder, front right
- 4 – Center silencer
- 5 – Center silencer retaining ring
- 6 – Clamping sleeve,  $\varnothing 65 \times 88$
- 7 – Rear silencer
- 8 – Sports tailpipes, black chrome-plated, left
- 9 – Sports tailpipes, black chrome-plated, right

- Hexagon flange bolt, M10 x 30 (center silencer holder): **Tightening torque 49 Nm (36.1 ftlb.)**
- Clamping sleeve,  $\varnothing 70 \times 79$ : **Tightening torque 30 Nm (22.1 ftlb.)**

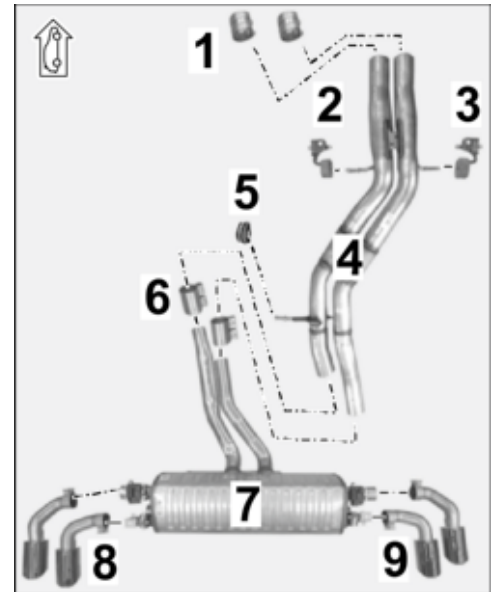


Figure 9

3.3 Install new rear silencer with a new clamping sleeve,  $\varnothing 65 \times 88$  (2 x).  $\Rightarrow$  *Workshop Manual '263355A3 Replacing rear silencer'*

- Hexagon flange bolt, M8 x 25 (back silencer holder): **Tightening torque 23 Nm (17 ftlb.)**
- Clamping sleeve,  $\varnothing 65 \times 88$ : **Tightening torque 30 Nm (22.1 ftlb.)**

3.4 Connect electric plug connections for servo motor for exhaust flap (left / right).

- 3.5 Install new sports tailpipes (silver or dark bronze) and align them with the rear panel.  
⇒ *Installation and Conversion Instructions '263400 Sports tailpipe, twin-branch – silver (OP3) / dark bronze (OP6)'*

- 1 – Sports tailpipe – inner (right)  
2 – Sports tailpipe – outer (right)  
3 – Exhaust system panel (rear panel)

- 3.5.1 Check and adjust symmetrical and constant gap between the new sports tailpipes and the exhaust system cover (rear panel – left and right side of vehicle).

⇒ *Figure 10 -Z-*: **Check value 21 mm +/- 1 mm** (0.83 in +/- 0.04 in)

- 3.5.2 Check spacing of inner / outer sports tailpipe (left and right side of vehicle). Adjust if necessary.

⇒ *Figure 10 -Za-*: **Check value 11 mm +/- 1 mm** (0.43 in +/- 0.04 in)

- 3.5.3 Tighten pan-head screw, M6 x 12 (underside of sports tailpipe cover).

**Tightening torque 8 Nm (5.9 ftlb.) +/- 1 Nm (0.7 ftlb.)**

- 4 Concluding work for vehicle underbody / engine compartment

- 4.1 Install all covers to the underbody of the vehicle.  
4.2 Install cowl panel cover. ⇒ *Workshop Manual '508719 Removing and installing cowl panel cover'*

Coding:

- 5 Coding / programming sports exhaust system - silver (OP8) / dark bronze (OP9)

- 5.1 Preparatory work – Coding

#### NOTICE

**Control unit programming will be aborted if the WLAN connection is unstable.**

- **An unstable WiFi connection can interrupt communication between the PIWIS Tester and the vehicle communication module (VCI). As a result, control unit programming may be aborted.**

⇒ **During control unit programming, always connect the PIWIS Tester to the vehicle communication module (VCI) via the USB cable.**

- 5.1.1 Connect **P90999 - P90999 - PIWIS Tester 4** to the vehicle and switch it on.

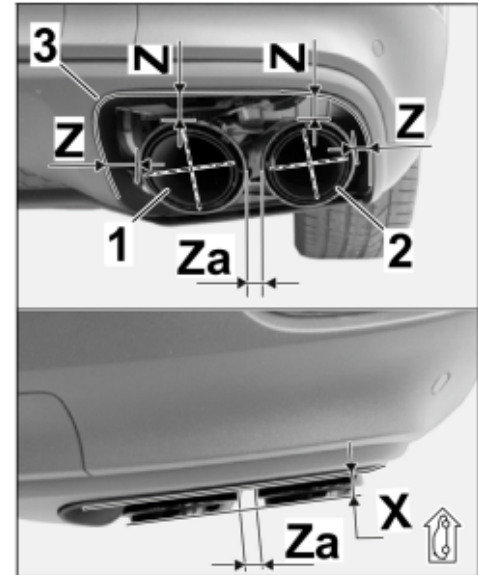


Figure 10

- 5.1.2 Switch on ignition **AND** hazard warning lights on the vehicle.



### Information

The **PIWIS Tester** instructions take precedence since the description may be different with later Tester releases.

The procedure described here has been structured in general terms. Different text or additional information may appear on the **PIWIS Tester**.

- 5.1.3 Select the "Diagnostics" menu item on the PIWIS Tester.
- 5.1.4 If **P90999 - P90999 - PIWIS Tester 4** is connected correctly, a connection to the vehicle will be established: "Cayenne" model line is detected.
- 5.1.5 Press **(F12)** to go to the control unit search screen.
- 5.1.6 Question: "Should an FAP be created?" If "Yes", press **(F12)** to confirm.
- 5.1.7 Select "KD-FAP" in the next menu item and press **(F8)** to start.



### Information

The function is **ONLY** available when the Tester is online!

- 5.2 Enter the new vehicle equipment in the vehicle data using "PIWIS Online"
- 5.2.1 Press **(F7)** in the control unit overview to switch to the "Additional menu".
- 5.2.2 Select the "Maintain vehicle data with PIWIS-ONLINE" function.
- A message appears informing you that the "Actual" (vehicle) data and "Required" (PIWIS Online) data will be synchronized.
- Press **(F12)** to continue.
- 5.2.3 Information "The vehicle data was synchronized with PIWIS Online." Significant differences were found" Press **(F12)** to confirm.
- 5.2.4 Look for the option "INTERIOR SOUND MEASURES (VW SILENCERS)" in the "Family" column.
- Select the option "2HB – INTERIOR SOUND MEASURES (SHAKER)" from the drop-down menu in the "Value" column.
- 5.2.5 Look for the option "EXHAUST TAILPIPE" in the "Family" column.
- Select "OP8 – SPORTS EXHAUST SYSTEM – STAINLESS-STEEL TAILPIPES" or "OP9 – SPORTS EXHAUST SYSTEM – BLACK TAILPIPES" from the drop-down menu in the "Value" column, depending on the installed option.
- Press **(F12)** to continue.

- 5.2.6 A table containing the coding value and the columns "new value" and "old value" is displayed in the overview. Press **F8** to continue.
- 5.2.7 Data is then written / saved. The following messages appear one after the other:
- Vehicle data is transferred to PIWIS Online.
  - Vehicle data is written and transferred to the vehicle.
  - Vehicle order written successfully.
  - A check was performed in order to check whether control units have to be coded or programmed as a result of the changes that were made.
- 5.3 Code / programme the new vehicle equipment.
- 5.3.1 Confirm the table containing a list of control units that must be coded / programmed, by pressing **F12** .
- 5.3.2 Individual data records will be loaded, depending on the number of control units to be coded / programmed.
- Information "Creating backup documentation. Please wait ... and "Coding was completed successfully". Press **F12** to continue.
- Repeat the process for other control units if necessary.
- 5.3.3 Wait for information "Adaptation of the control units is complete." and check the coding status of the control units in the displayed table.
- Continue by pressing **F12** to return to the control unit overview.
- 5.4 Read out the fault memory of all systems, work through any existing faults and erase the fault memory. ⇒ *Workshop Manual '0335IN Diagnostics maintenance: Diagnostic system and maintenance inter...'*
- 5.5 Switch off ignition and disconnect **P90999 - P90999 - PIWIS Tester 4**.
- 5.6 Drive the vehicle off the lifting platform.
- 6 Perform "Sports exhaust system" function test
- 6.1 Start the engine.
- 6.2 Activate / deactivate the sports exhaust system, depending on vehicle equipment, using the following option:
- Porsche Communication Management: Select the menu "Car" → "Drive" → "Sports exhaust system"
  - Porsche Communication Management: Select "SPORT" or "SPORT PLUS"
- 6.3 Switching off ignition

26 01 31 33: **ONLY** for vehicles WITHOUT gasoline particulate filter (PPF; emissions concept = OGB / 7GH / 7MM / 7MU):

– Sports exhaust system (1 x) Installed –

Labor time: **484 TU**

Includes:     Replace engine noise control unit;  
                  Install new exhaust pipes (left / right);  
                  Install new center and rear silencers;  
                  Install and align new sports tailpipes (4 pc(s));  
                  Code the sports exhaust system;  
                  Read out fault memory, correct faults and delete them.

Without:     Test drive

**Important Notice:** Technical Bulletins issued by Porsche Cars North America, Inc. are intended only for use by professional automotive technicians who have attended Porsche service training courses. They are written to inform those technicians of conditions that may occur on some Porsche vehicles, or to provide information that could assist in the proper servicing of a vehicle. Porsche special tools may be necessary in order to perform certain operations identified in these bulletins. Use of tools and procedures other than those Porsche recommends in these bulletins may be detrimental to the safe operation of your vehicle, and may endanger the people working on it. Properly trained Porsche technicians have the equipment, tools, safety instructions, and know-how to do the job properly and safely. Part numbers listed in these bulletins are for reference only. The work procedures updated electronically in the Porsche PIWIS diagnostic and testing device take precedence and, in the event of a discrepancy, the work procedures in the PIWIS Tester are the ones that must be followed.

© 2025 Porsche Cars North America, Inc.