



TECHNICAL SERVICE BULLETIN

Oil Consumption And Blue Smoke From Tailpipe

25-2415

29 August
2025

This bulletin supersedes 25-2361. Reason for update: to clarify the build dates in the Service Procedure.

Model:

Ford 2024-2025 Transit	Engine: 3.5L Duratec
2024-2025 Explorer	Engine: 3.3L Duratec Engine: 3.3L Hybrid

Markets: North American markets only

Issue: Some of the vehicles listed in the Model statement above may exhibit oil consumption and blue smoke from the tailpipe. This may be due to the sealing process of the PCV baffle which is part of the valve cover assembly.

Action: For vehicles that meet all of the criteria in the Issue and Model statements, follow the Service Procedure to replace the engine valve cover RH.

Parts

Service Part Number	Claim Quantity	Package Order Quantity	Number in Package	Description
BR3Z-6582-V	1	1	1	Engine Valve Cover (Right Hand)
9L8Z-9J469-A	1	1	1	Exhaust Gas Recirculation (EGR) Tube O-ring seal
JL3Z-9E464-F	1	1	1	Exhaust Gas Recirculation (EGR) Gasket
AT4Z-9E936-A	1	1	1	Throttle Body Gasket
LC3Z-9F479-B	1	1	1	Manifold Absolute Pressure (MAP) Sensor (Transit Only)
PV4Z-9F479-C	1	1	1	Manifold Absolute Pressure and Temperature (MAPT) Sensor (Explorer Only)
AT4Z-9H486-A	1	1	1	Upper Intake Manifold Sealing Surfaces
PM-4-A	As Needed	As Needed		Motorcraft® Metal Brake Parts Cleaner (Compliant With Low Volatile Organic Compound Requirements As
PM-4-B	As Needed	As Needed		Motorcraft® Metal Brake Parts Cleaner (Not Compliant With Volatile Organic Compound Requirements)
CPM-4-A	As Needed	As Needed		Motorcraft® Brake Parts Cleaner (Compliant With Low Volatile Organic Compound Requirements As Requir
TA-357	As Needed	As Needed		Motorcraft® High Performance Engine RTV Silicone
ZC-30-A	As Needed	As Needed		Motorcraft® Silicone Gasket Remover
ZC-31-B	As Needed	As Needed		Motorcraft® Metal Surface Prep Wipes
XO-5W30-Q1SP	As Needed	As Needed		Motorcraft® SAE 5W-30 Motor Oil

CXO-5W30-LSP6	As Needed	As Needed		Motorcraft® SAE 5W-30 Motor Oil (Canada Only)
VC-13DL-G	As Needed	As Needed		Motorcraft® Yellow Prediluted Antifreeze/Coolant (For Explorer Only / All Markets Except Canada)
CVC-13DL-G	As Needed	As Needed		Motorcraft® Yellow Prediluted Antifreeze/Coolant (For Explorer Only/ For Canada Only)

Parts - Parts To Inspect And Replace Only If Necessary

Service Part Number	Claim Quantity	Package Order Quantity	Number in Package	Description
JL3Z-12029-A	Only If Necessary (Up To 3)	Only If Necessary (Up To 3)	1	Ignition Coil On-Plug (Right Hand Only)

Service part numbers and "number in package" quantity may change after publication, thus also affecting the "package order quantity". Refer to the parts catalog for the latest information.

Claim Quantity refers to the total number of individual pieces required to repair the vehicle.

Package Order Quantity refers to the amount of the service part number package(s) required to repair the vehicle.

Number In Package refers to the number of individual pieces included in a service part number package.

As Needed indicates the part is necessary but amount of the part may vary and/or is not a whole number. Parts can be billed out as non-whole numbers, including less than 1.

Only If Necessary indicates the part is not mandatory. Refer to the Service Procedure to determine the inspection/inclusion criteria.

Warranty Status: Eligible under provisions of New Vehicle Limited Warranty (NVLW)/Emissions Warranty/Service Part Warranty (SPW)/Service Part New Vehicle (SPNV)/Extended Service Plan (ESP) coverage. Limits/policies/prior approvals are not altered by a TSB. NVLW/Emissions Warranty/SPW/SPNV/ESP coverage limits are determined by the identified causal part and verified using the OASIS part coverage tool.

Labor Times

Description	Operation No.	Time
2025 Transit 3.5L Duratec: Verify Build Date And Replace The RH Valve Cover Includes Time To Road Test To Verify Repair (Do Not Use With Any Other Labor Operations)	252415A	2.2 Hrs.
2024-2025 Explorer 3.3L Duratec: Verify Build Date And Replace The RH Valve Cover Includes Time To Road Test To Verify Repair (Do Not Use With Any Other Labor Operations)	252415B	3.7 Hrs.
2024-2025 Explorer 3.3L Duratec Hybrid: Verify Build Date And Replace The RH Valve Cover Includes Time To Road Test To Verify Repair (Do Not Use With Any Other Labor Operations)	252415C	3.9 Hrs.

Repair/Claim Coding

Causal Part:	6582
Condition Code:	42

Service Procedure

1. Verify the production build date of the engine valve cover **RH**. Refer to Figures 1 and 2 for 3.5L engines and Figures 3 and 4 for 3.3L engines.

NOTE: The harness shown in Figure 2 needs to be slightly pushed aside to view the entire date.

NOTE: Date displayed on engine valve cover **RH will show as: 12/09/2024 (09-Dec-2024) or 12/10/2024 (10-Dec-2024).**

Figure 1 - Showing the zoomed-out location of the date on the 3.5L engine valve cover RH.

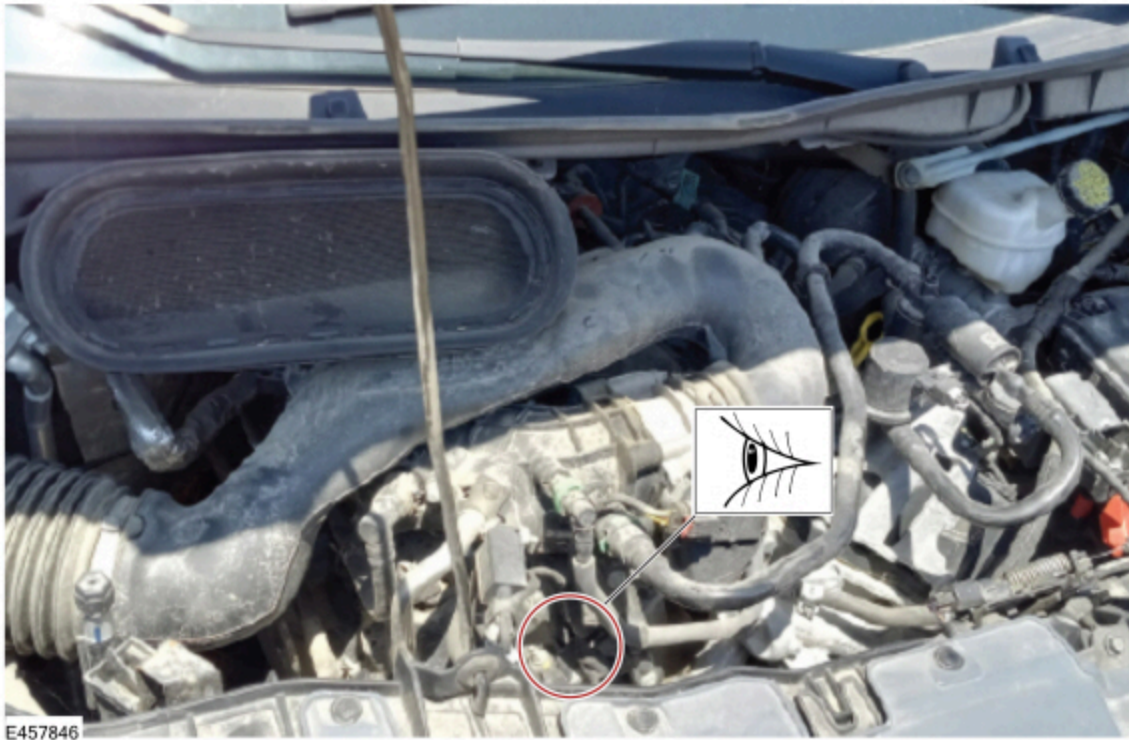
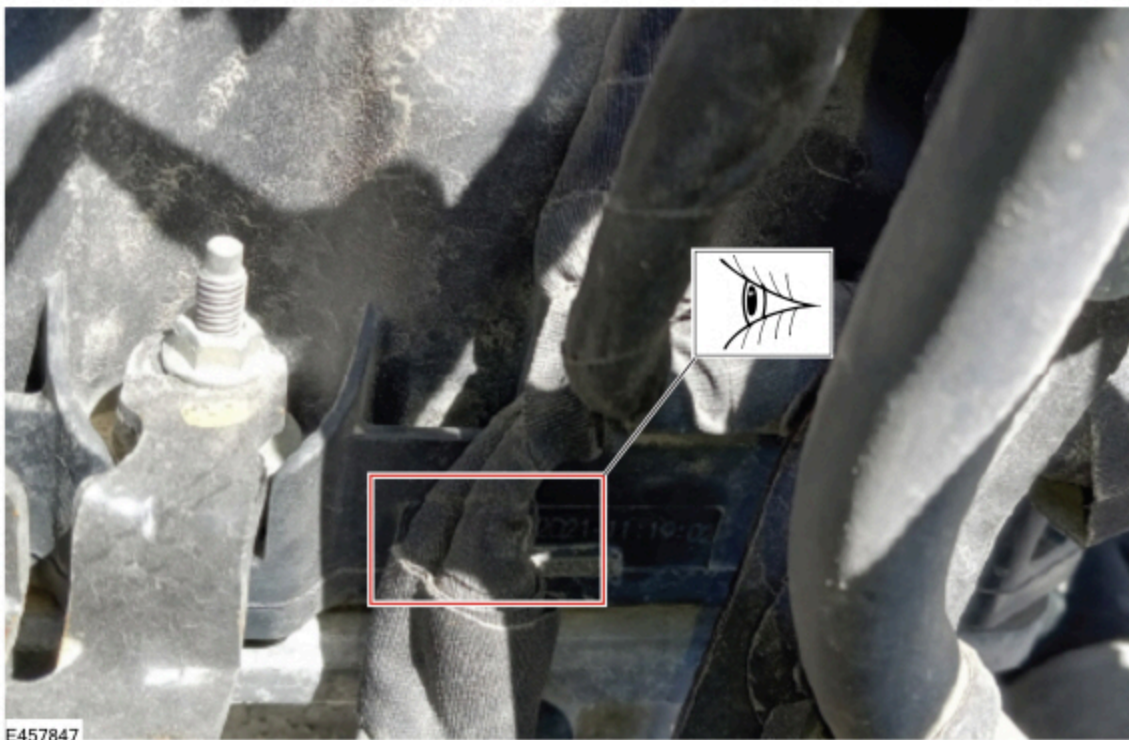


Figure 2 - Showing the zoomed-in location of the date on the 3.5L engine valve cover RH. Date is shown on the engine valve cover RH as Month/Day/Year.



NOTE: The harness bracket shown in Figure 3 may require temporary removal to view the entire date.

Figure 3 - Showing the zoomed-out location of the date on the 3.3L engine valve cover RH.

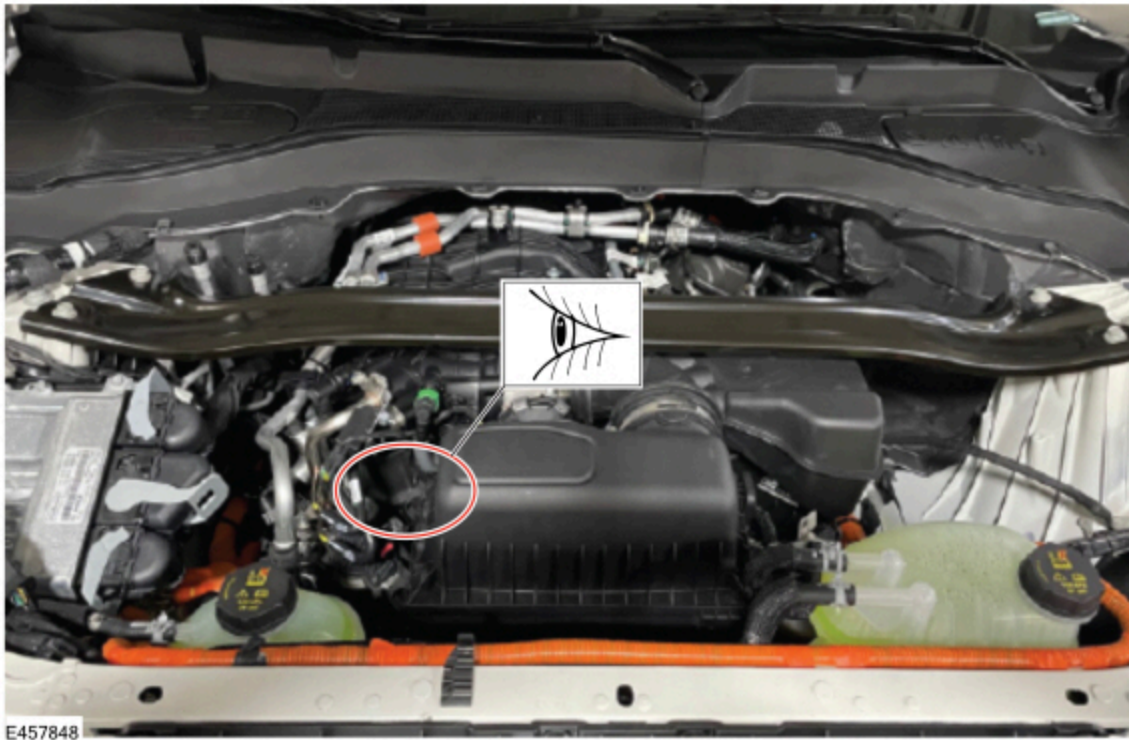
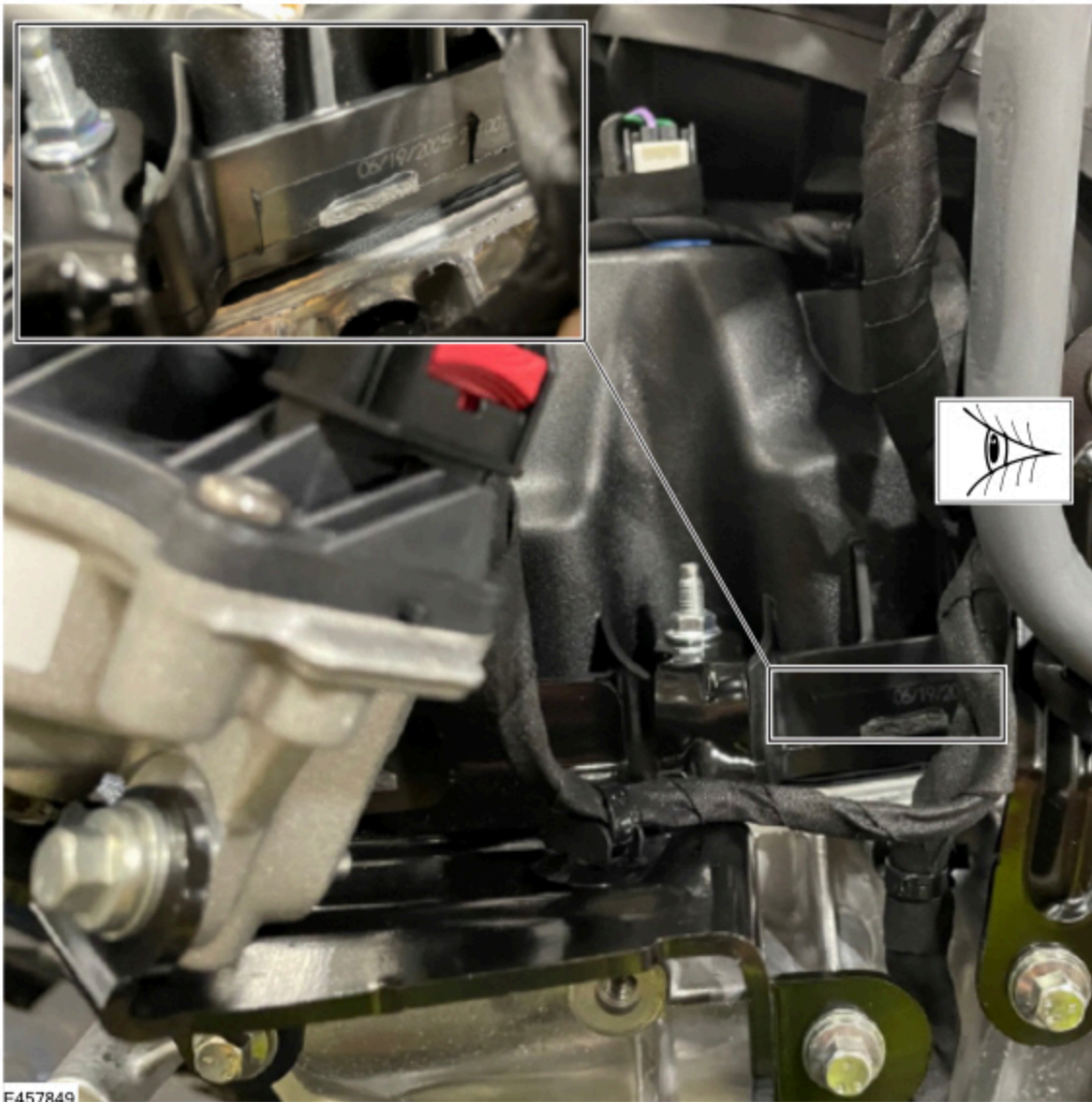


Figure 4 - Showing the zoomed-in location of the date on the 3.3L engine valve cover RH. Date is shown on the engine valve cover RH as Month/Day/Year.



2. Is the build date on the engine valve cover RH 09-Dec-2024 or 10-Dec-2024?

(1). Yes - proceed to Step 3.

(2). No - this article does not apply. For further diagnostics, refer to WSM, Section 303-00 > Diagnosis and Testing.

3. Replace the engine valve cover RH. Refer to WSM, Section 303-01.

NOTE: Do not reinstall the upper intake manifold at this time.

4. Remove the throttle body. Discard the throttle body gasket. Refer to WSM, Section 303-04.

5. For Explorer vehicles, remove the MAPT sensor. For Transit vehicles, remove the MAP sensor. Refer to WSM, Section 303-14.

6. Use the Motorcraft® Metal Brake Parts Cleaner to thoroughly clean the inside of the upper intake manifold. Spray the cleaner into all upper intake manifold ports to maximize cleaning effectiveness.

7. Apply the Motorcraft® Metal Brake Parts Cleaner to a clean shop towel and carefully wipe the inside of the throttle body.

NOTE: Do not spray the Motorcraft® Metal Brake Parts Cleaner directly into the throttle body.

8. Use compressed air to dry the upper intake manifold and throttle body.

9. Reinstall the throttle body and MAPT/ MAP sensor. Refer to WSM, Section 303-04 and Section 303-14.

10. Reinstall the upper intake manifold. Refer to WSM, Section 303-01.

11. Check engine oil level and add engine oil as needed. Refer to Owner's Manual.

12. Perform a 10 mile (16 km) road test to verify symptom has been resolved. If the symptom is still present, refer to the WSM and perform normal diagnostics outside of this article.

NOTE: If the spark plugs require replacement, repair as needed outside of the article.

© 2025 Ford Motor Company

All rights reserved.

NOTE: The information in Technical Service Bulletins is intended for use by trained, professional technicians with the knowledge, tools, and equipment to do the job properly and safely. It informs these technicians of conditions that may occur on some vehicles, or provides information that could assist in proper vehicle service. The procedures should not be performed by "do-it-yourselfers". Do not assume that a condition described affects your car or truck. Contact a Ford or Lincoln dealership to determine whether the Bulletin applies to your vehicle. Warranty Policy and Extended Service Plan documentation determine Warranty and/or Extended Service Plan coverage unless stated otherwise in the TSB article. The information in this Technical Service Bulletin (TSB) was current at the time of printing. Ford Motor Company reserves the right to supersede this information with updates. The most recent information is available through Ford Motor Company's on-line technical resources.