

Field campaign

Topic	Software Update Window Short Drop Deletion Continental GT/GTC 26MY (SC25 /31)
Market area	Bentley: worldwide (2WBE),China 796 VW Import Comp. Ltd (Vico), Beijing (6796)
Brand	Bentley
Transaction No.	2078277/6
Campaign number	ED59
Note	
Type	
US code	

Vehicle data

26MY Continental GT / GTC

Sales types

Type	MY	Brand	Designation	Engine code	Gearbox code	Final drive code
Z23*	2026	E		*	*	*
Z24*	2026	E		*	*	*

Documents

Document name
master.xml
gt_glass_set_measurement_sheet.pdf
gtc_glass_set_measurement_sheet.pdf
v6sc2531vinlist.pdf

ED59

Transaction No.: 2078277
/6

Software Update | Window Short Drop Deletion | Continental GT/GTC | 26MY
(SC25/31)

Release date: Aug 27,
2025

Notes

▼ **Repair instructions**

Technical background

CAUTION

Please refer to all of the instructions within the Work section. The instructions MUST be followed in the exact order as detailed

Remedy

All instructions within the Work section must be conducted as detailed

Software update is available for the left and right hand rear door control modules - Diagnostic address 00BB Driver side and 00BC Passenger side

The software eliminates the rear window short drop function

Customer notification

Please ensure the software instructions within the Service campaign must be conducted at the nearest opportunity

Warranty

Warranty type	710 or 790
Damage service number	ED59
Damage code	00 66
Criterion ID	01

Time to conduct the Software Version Management (SVM) update - Rear door control modules

Labour operation code	01 51 00 00
Time	As per ODIS log Must not exceed 50 TU

Time to conduct initial measurement checks Profile (Y-Axis) and Interlock (X-Axis)

Labour operation code	64 38 02 00
Time	30 TU

CAUTION

The labour codes below must only be claimed if the Profile (Y-Axis) and Interlock (X-Axis) were out of specification (before and / or after the software update was conducted)

Time to conduct the front glass adjustment procedure

Labour operation code 64 40 15 00

Time 140 TU (per side)

Time to conduct the rear glass adjustment procedure

Labour operation code 64 75 15 00

Time 170 TU (per side)

Water leak test

Labour operation code 64 38 01 99 (Use this code when conducting the water leak test)

Time 20 TU

Additional Time Allowance

A 100TU allowance may be claimed only if a SVM update fails to complete successfully. This is intended to cover additional diagnostic or recovery work directly resulting from the failed update. It must not be used for unrelated delays or issues.

ODIS logs must be attached to a DISS ticket for evidence of failure. Claims without valid documentation will be rejected. Warranty Adjudicators will review associated ODIS logs and DISS queries to determine actual software update time.

Parts

Not applicable

Parts supply

NOTICE

Should one or both of the measurements not be within specification the operative must refer to Rep.Gr 64 - Rear door drop glass - To adjust and conduct the front and rear glass adjustment procedure for the affected side left and / or right hand side to completion (all steps)

NOTICE

Adjustment of all side glass requires the interior trim to be removed. Refer to "Rear quarter trim – To remove and fit". Rep. Gr. 70



To carry out the "Rear quarter trim – To remove and fit". Rep. Gr. 70 procedure, the following one-time-use parts must be replaced during the reinstallation:

N 989 244 01 x4 (Front seat belt slider bar fixing x2 each side)

N 989 244 01 x2 (Rear seat belt fixing x1 each side)

Refer to ETKA parts catalogue

Parts despatch control

Not applicable

Technical background

CAUTION

Please refer to all of the instructions within the Work section. The instructions MUST be followed in the exact order as detailed

Check

If the vehicle is not already listed as repaired in "Repair history" (in Elsa pro), check for the presence of the blue paint completion mark as shown within the Identification section

If neither are evident please conduct the instructions within the Work section to completion.

Parts

Not applicable

Work

CAUTION

Ensure the vehicle is connected to a suitable 12V Lithium Ion battery charger before conducting any work

Section 1 – Initial Glass Set Measurements

NOTICE

Conduct initial glass set measurements and record the results in the model specific measurement document attached (see documents section). After completing the initial measurements, DO NOT make any adjustments until after the software update has been completed

CAUTION

When completing the initial glass set measurements strictly adhere to the instructions in section 2



When completing measurements on Continental GTC models, complete a set of measurements with both the roof up and the roof down, as per the attached glass set measurement sheet

Section 2 – Glass Set Measurement Instructions

CAUTION

When completing the glass set measurement procedure, strictly adhere to the instructions below

If unsure about the measurement process follow the video on eAcademy or raise a full technical DISS query.

To eliminate confusion about the usage of WT10549/3 and the Y axis profile measurement between the front and rear windows and how to correctly read/enter the measurements in the tables, please refer to the below images to aid with accurate reading of the Y axis profile when using WT10549/3.

Window Parallel

When the window is parallel take the 2mm step from the tool and minus the 2mm gap between front window and tool = -0mm (as shown in figure 1)

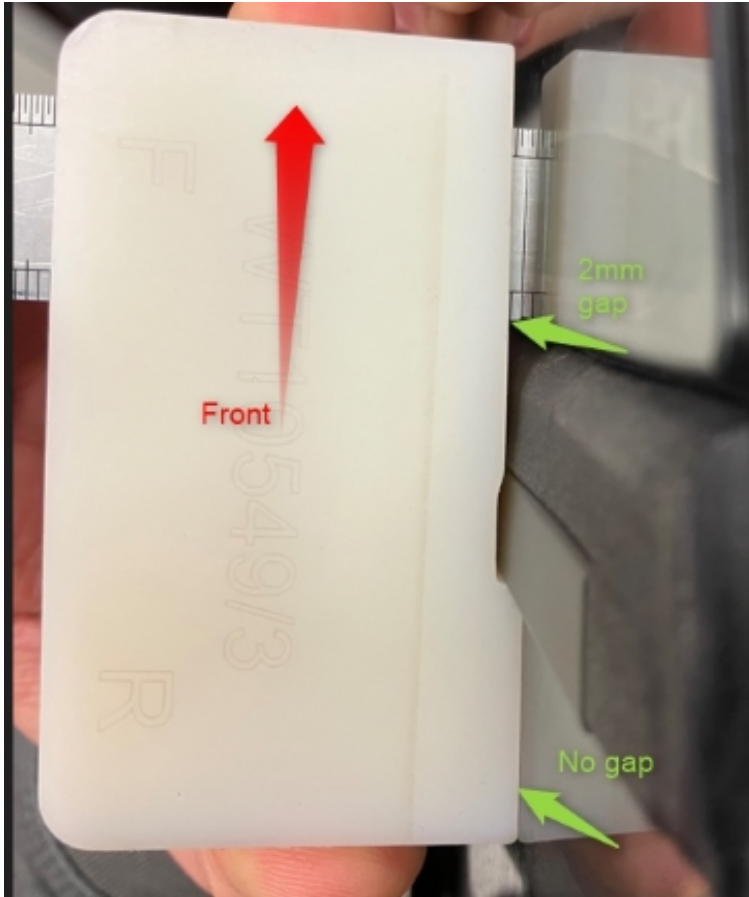


Figure 1

When the rear window is 0mm inboard from the front glass and the windows are parallel, the measurement written as 0mm (figure 2)

Profile (Y-Axis) Roof Down	Vehicle Position	Dimension -X-	Before adjustment
4 50mm from top of division bar	Front drop glass to rear quarter glass	+0 mm / - 2 mm	0mm

Figure 2

Rear Window Inboard

When the rear window is inboard and there is a 2mm step from the tool, when there is no gap between either window and tool (figure 3), the recorded measurement should be -2mm (figure 4)

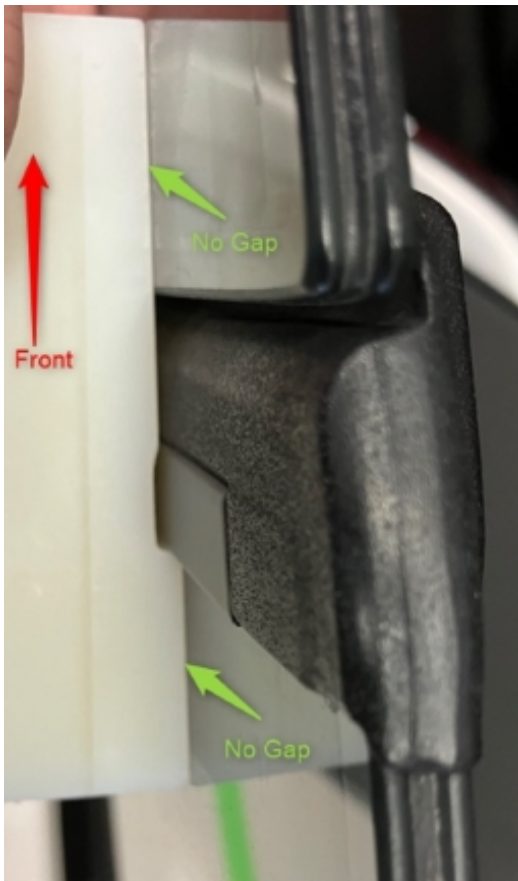


Figure 3

Profile (Y-Axis) Roof Down	Vehicle Position	Dimension -X-	Before adjustment
4 50mm from top of division bar	Front drop glass to rear quarter glass	+0 mm / - 2 mm	-2mm

Figure 4

Rear Window Too Far Inboard

When the rear window is inboard and there is a 2mm step from the tool as well as an additional 1.5mm gap to the window (figure 5), the recorded measurement should be -3.5mm (figure 6).

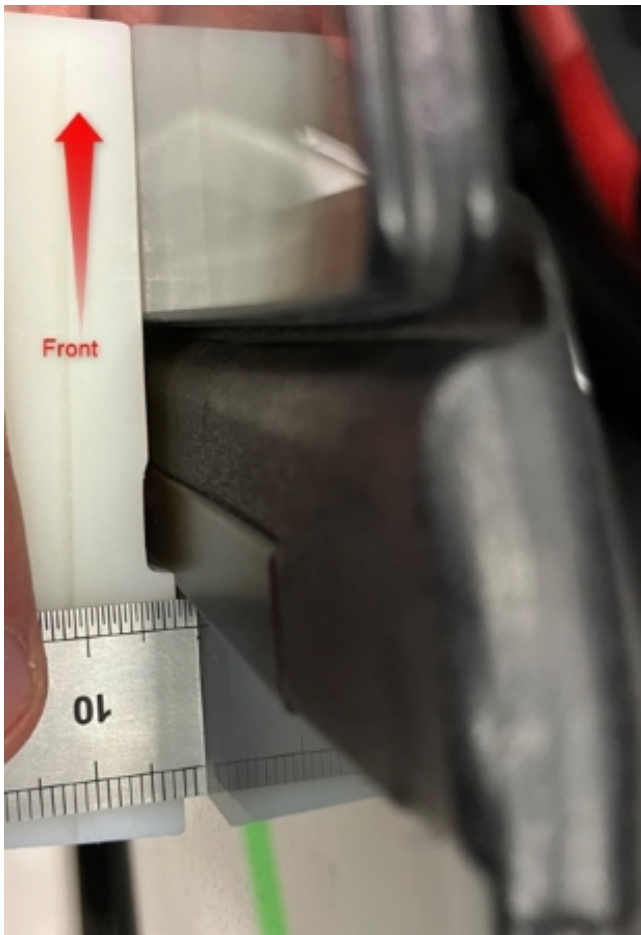


Figure 5

Profile (Y-Axis) Roof Down	Vehicle Position	Dimension -X-	Before adjustment
4 50mm from top of division bar	Front drop glass to rear quarter glass	+0 mm / - 2 mm	-3.5mm

Figure 6

If the tool (WT10549/3) does not sit flush against the rear window then this shows rear window is more than 2mm inboard (more than -2mm), check this by holding the tool on the front window and measuring gap between the rear glass and the tool (as shown in figure 7)

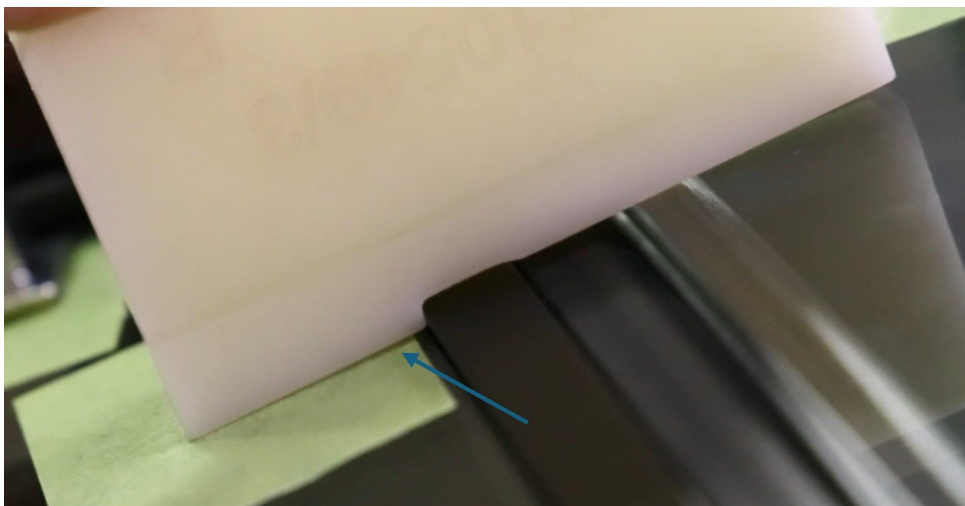


Figure 7

Further explanation can be found in the videos shown in Figure 8, which can be found on eAcademy Digital Learning Hub.

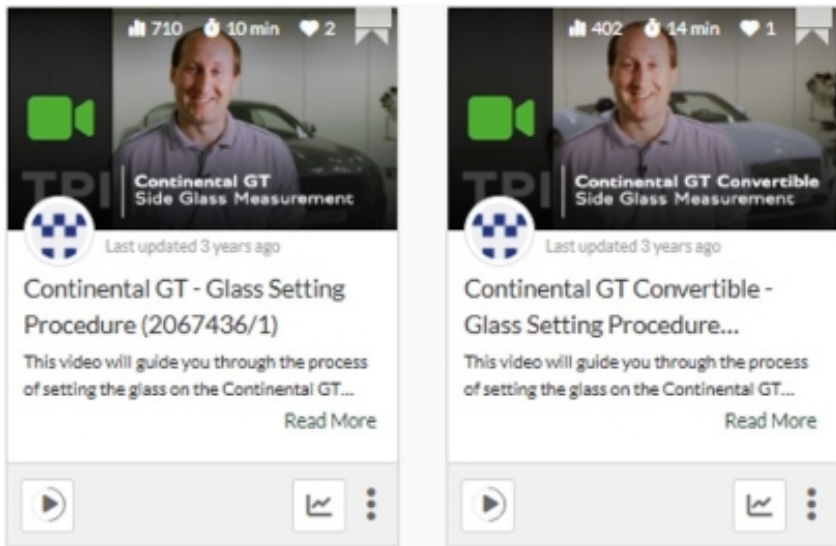


Figure 8

Section 3 - Software update to the rear door control modules 00BB and 00BC - Short drop function elimination

CAUTION

ONLY Chargers that meet the approved specification on the Mandatory Equipment List (available on the Bentley Hub) **MUST** be used.

- The charger must be set to a mode where a **MINIMUM** of 90a is supplied to the battery during the process. Typically, this is known as 'Power Supply Mode' or 'DIAG+ Mode'.
- A voltage of exactly 14.8v must be set and maintained throughout the process.
- Please refer to the manual to ensure that these requirements are met before beginning any SVM update



The following software update eliminates the rear window short drop function

1) Preparation before update

- Conduct a full guided fault find of the vehicle.



If a 'Check installation list' pop-up appears, select 'close' (Figure 9)

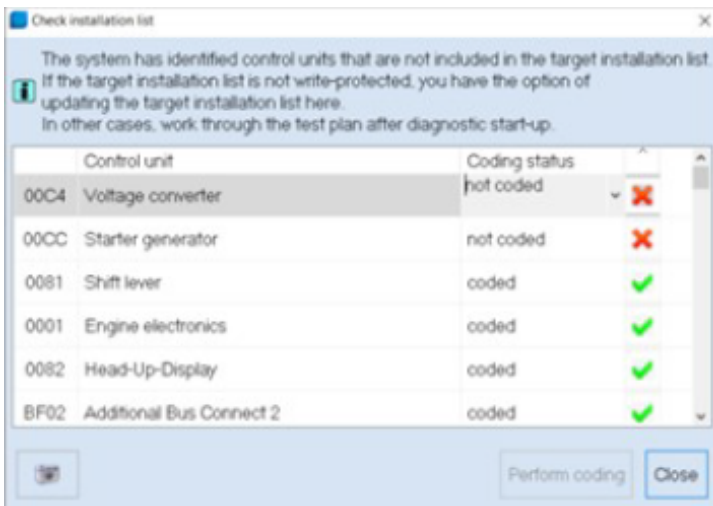


Figure 9

Referring to TPI 2075920, address any unknown faults **BEFORE** conducting any of the below updates.

2) Referring to Figure 10 - Within the Special functions tab - Select SVM - Code Input (Point A)

• Select Perform test (Point B)

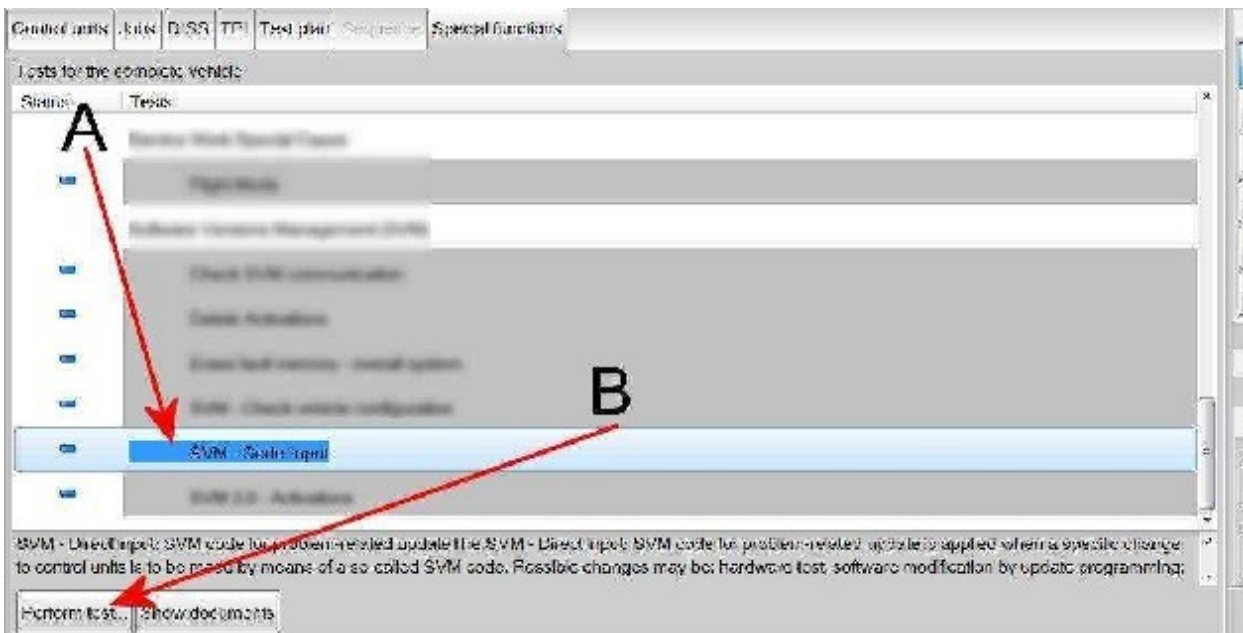


Figure 10

3) Referring to Figure 11 - Enter the SVM code **372WDD02**

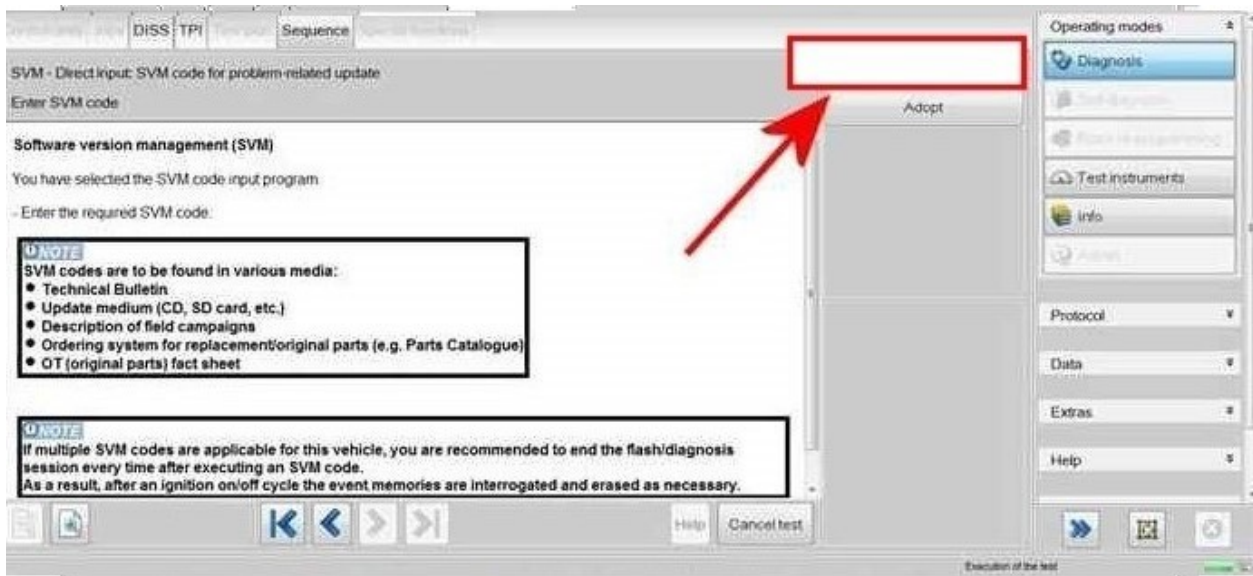


Figure 11

4) The control modules will automatically be updated one by one, starting with 00BB (Driver rear) and then 00BC (passenger rear)



Upon successful completion you will get a failure message of 8113 SVM Error

NOTICE

If you get any other error code, such as 8118, please refer to TPI 2078962

5) On completion open the doors and ensure that the rear windows no longer drop.

6) Switch off the ignition

- Remove the diagnostic interface from the OBD port
- Switch off and remove the battery charger from the vehicle
- Close the bonnet, boot and all doors
- Lock the vehicle
- Wait 5 minutes to allow the vehicle to go into bus silence
- When 5 minutes has elapsed, unlock the vehicle and open the driver's door
- Switch on the ignition

7) Once the software update has been conducted continue with the remaining instructions

Hint: The remaining instructions MUST be conducted regardless if adjustments were conducted or not

8) Referring to Rep.Gr 64 - Measure and record the points as detailed below on the left and right hand side Profile (Y-Axis) and Interlock (X-Axis).

CAUTION

Strictly adhere to the instructions in section 2 when completing the glass set measurements after the

software update has been completed.

Note: Should the measurements for the left and right hand side be within specification please go to step 11 and follow all remaining steps until completion

Or

 NOTICE

Should one or both of the measurements not be within specification the operative must refer to Rep.Gr 64 - Rear door drop glass - To adjust and conduct the front and rear glass adjustment procedure for the affected side left and / or right hand side to completion (all steps) and record a final measurement in the attached document

 CAUTION

All measurements must be recorded in the attached measurement documentation and saved as they will be required to be attached to a non-technical DISS query at the end of the procedure



FAILURE TO ATTACH THE MEASUREMENTS TO THE DISS WILL RESULT IN NON PAYMENT OF THE WARRANTY CLAIM

Note: Once the adjustment has been conducted please go to step 10 and follow all remaining steps until completion

9) VERY IMPORTANT - Referring to Rep.Gr 64 - Side glass - To initialise

 CAUTION

When conducting step 11 extra care must be taken to ensure the interior trim is suitably protected, any water which enters the vehicle due to a leak must be dried / cleaned immediately. Ensure all windows, sunroof and convertible roof (where applicable) are fully closed before conducting step 11

10) Conduct a water leak check to ensure that water is not leaking into the vehicles interior - Water leaks must be resolved before handing over the vehicle to the customer

11) Conduct the PDI road test to check for any wind noise related issues

 NOTICE

Should the vehicle fail the water leak check or a wind noise check, please raise a full technical DISS query

12) Upon successful completion of the PDI road test, raise a non-technical DISS query titled SC25/30 X and Y Axis measurement feedback ensuring the following is attached

- Online ODIS log
- A completed model specific measurement table

13) Referring to the Identification section - Apply a blue paint completion mark on the engine partition brace (Figure 12)

Identification

Blue paint completion mark on the engine partition brace



Figure 12

▲ Repair instructions ▲ Notes

Side glass measurements GT 25MY for Campaign ED18					
Interlock (Z-Axis)	Vehicle Position	Dimension -X-	Before SVM	After SVM	After adjustment (if required)
A 50 mm from division bar	Front quarter glass	7.5 mm \pm 1 mm			
B 150 mm from division bar	Front of door drop glass	8 mm \pm 1 mm			
C 50 mm from rear of door drop glass	Rear of door drop glass	8 mm \pm 1 mm			
D 50 mm from rear drop glass division bar	Front of rear quarter glass	8 mm \pm 1 mm			
E 50 mm from rearmost section of rear drop glass	Rear of rear quarter glass	8 mm \pm 1 mm			
Interlock (X-Axis)	Vehicle Position	Dimension -X-	Before SVM	After SVM	After adjustment (if required)
4 50 mm from the top of the window	Rear door quarter glass strip to front door drop glass edge	11 mm \pm 1 mm			
5 50 mm from the waistrail seal	Rear door quarter glass strip to front door drop glass edge	11 mm \pm 1 mm			
Profile (Y-Axis)	Vehicle Position	Dimension -X-	Before SVM	After SVM	After adjustment (if required)
1 50 mm from division bar	Front quarter glass	10 mm \pm 1 mm			
2 150 mm from division bar	Front of door drop glass	10 mm \pm 2 mm			
3 50 mm from rear of door drop glass	Rear of door drop glass	10 mm \pm 2 mm			
6 50 mm from rear drop glass division bar	Front of rear quarter glass	10 mm \pm 2 mm			
7 50 mm from rearmost section of rear drop glass	Rear of rear quarter glass	10 mm \pm 2 mm			
8 50mm forwards of rear of front drop glass (waist rail gap)	Rear of door drop glass	5mm \pm 1mm			
9 50mm rearward of front of rear drop glass (waist rail gap)	Front of rear quarter glass	5mm \pm 1mm			
Profile (Y-Axis)	Vehicle Position	Dimension -X-	Before SVM	After SVM	After adjustment (if required)
4 50mm from top of division bar	Front drop glass to rear quarter glass	+0 mm / - 2.5 mm			
5 50mm from bottom of division bar	Front drop glass to rear quarter glass	+0 mm / - 2 mm			

Side glass measurements GTC 25MY for Campaign ED18					
Interlock (Z-Axis)	Vehicle Position	Dimension -X-	Before SVM	After SVM	After adjustment (if required)
1 50 mm from division bar	Front quarter glass	7.5 mm ± 1 mm			
2 100 mm from division bar	Front of door drop glass	8.5 mm ± 1 mm			
3 50 mm from rear of door drop glass	Rear of door drop glass	8.5 mm ± 1 mm			
6 50 mm from rear drop glass division bar	Front of rear quarter glass	8.5 mm ± 1 mm			
7 100 mm from where the hood meets the brightware	Rear of rear quarter glass	10 — 16mm			
Interlock (X-Axis) Roof Up	Vehicle Position	Dimension -X-	Before SVM	After SVM	After adjustment (if required)
4 50 mm from the top of the window	Rear door quarter glass strip to front door drop glass edge	11 mm ± 1 mm			
5 50 mm from the waistrail seal	Rear door quarter glass strip to front door drop glass edge	11 mm ± 1 mm			
Interlock (X-Axis) Roof Down	Vehicle Position	Dimension -X-	Before SVM	After SVM	After adjustment (if required)
4 50 mm from the top of the window	Rear door quarter glass strip to front door drop glass edge	11 mm ± 1 mm			
5 50 mm from the waistrail seal	Rear door quarter glass strip to front door drop glass edge	11 mm ± 1 mm			
Profile (Y-Axis)	Vehicle Position	Dimension -X-	Before SVM	After SVM	After adjustment (if required)
1 50 mm from division bar	Front quarter glass	10 mm ± 1 mm			
2 100 mm from division bar	Front of door drop glass	14 mm ± 2 mm			
8 50mm forwards of rear of front drop glass (waist rail gap)	Rear of door drop glass	5mm ± 1mm			
9 50mm rearward of front of rear drop glass (waist rail gap)	Front of rear quarter glass	5mm ± 1mm			
Profile (Y-Axis) Roof Up	Vehicle Position	Dimension -X-	Before SVM	After SVM	After adjustment (if required)
4 50mm from top of division bar	Front drop glass to rear quarter glass	+0 mm / - 2.5 mm			
5 50mm from bottom of division bar	Front drop glass to rear quarter glass	+0 mm / - 2 mm			
Profile (Y-Axis) Roof Down	Vehicle Position	Dimension -X-	Before SVM	After SVM	After adjustment (if required)
4 50mm from top of division bar	Front drop glass to rear quarter glass	+0 mm / - 2.5 mm			
5 50mm from bottom of division bar	Front drop glass to rear quarter glass	+0 mm / - 2 mm			

SCBCB13S6TC025422	SCBDP4ZGXTTC025367	SCBCN13S7TC025291
SCBCB13S7TC025414	SCBDR4ZG1TC025350	SCBCN13S9TC025325
SCBCM13S0TC025233	SCBDR4ZGXTTC025332	SCBCN13SXTTC024863
SCBCM13S4TC025428	SCBCB13S0TC025318	SCBCN13SXTTC025141
SCBCM13S7TC025424	SCBCB13S1TC025330	SCBCP2ZG3TC025310
SCBCM13S9TC025408	SCBCB13S5TC025315	SCBCP2ZG7TC025276
SCBCN13S6TC025430	SCBCD13S7TC025360	SCBCU13S3TC025243
SCBCN13S8TC025395	SCBCM13S2TC025301	SCBCU13S8TC025237
SCBCP2ZG2TC025377	SCBCM13S8TC025285	SCBDM33S2TC025265
SCBDM33S9TC025375	SCBCN13S1TC025299	SCBDM33S3TC025307
SCBDN33S3TC024879	SCBCN13S5TC025371	SCBDN33S9TC025115
SCBDN33S4TC025362	SCBCN13SXTTC025348	SCBDN33SXTTC025284
SCBDN33SXTTC025091	SCBCP2ZG5TC025373	SCBDP4ZG2TC025279
SCBDR4ZG6TC025358	SCBCP2ZG7TC025259	SCBDP4ZG6TC025205
SCBCC13S7TC025393	SCBCR2ZG2TC025342	SCBDP4ZG6TC025317
SCBCM13S3TC025386	SCBDP4ZG6TC025172	SCBDP4ZG8TC025268
SCBCM13S7TC025312	SCBDP4ZG6TC025219	SCBDP4ZG9TC025313
SCBCM13S7TC025388	SCBDP4ZG7TC025164	SCBDR4ZG0TC025033
SCBCM13SXTTC025269	SCBDP4ZG9TC025246	SCBDR4ZG3TC025303
SCBCM13SXTTC025305	SCBDP4ZGXTTC024932	SCBCB13S4TC025287
SCBCN13S0TC025150	SCBDP4ZGXTTC025322	SCBCB13S5TC025282
SCBCN13S0TC025391	SCBCB13S1TC025280	SCBCB13S6TC024822
SCBCN13S2TC025389	SCBCB13S7TC024988	SCBCB13S8TC025258
SCBCN13S2TC025411	SCBCB13S8TC025308	SCBCC13S6TC024977
SCBCN13S8TC025235	SCBCM13S7TC025228	SCBCD13S7TC024922
SCBCN13S9TC025177	SCBCM13S9TC025201	SCBCG13S5TC024926
SCBCN1ZG0TC025278	SCBCM13S9TC025263	SCBCM13S4TC025218
SCBCN1ZGXTTC025398	SCBCM13S9TC025294	SCBCM13S4TC025266
SCBCP2ZG1TC025399	SCBCM1ZG2TC025320	SCBCM13S8TC025254
SCBCR2ZG7TC025384	SCBCN13S4TC025247	SCBCM13SXTTC025031
SCBDP4ZG5TC025339	SCBCN13S4TC025295	SCBCM1ZG0TC024764

SCBCN13S2TC024646	SCBCN13S3TC024896	SCBCN13S4TC025006
SCBCN13S2TC024887	SCBCP2ZG0TC024843	SCBCN13S5TC024477
SCBCN13S4TC025152	SCBCR2ZG9TC025208	SCBCN13SXTC025138
SCBCN13S4TC025264	SCBCU13S6TC025012	SCBCN13SXTC025155
SCBCN13S5TC025256	SCBDM33S1TC025189	SCBCP2ZG9TC025148
SCBCN13SXTC024619	SCBDM33S3TC025226	SCBCP2ZGXTC025143
SCBCP2ZG1TC025225	SCBCB13SXTC025245	SCBDB33SXTC024581
SCBCP2ZG3TC025274	SCBCM13S1TC025192	SCBDM33S2TC025153
SCBCP2ZG4TC025039	SCBCM13S4TC025199	SCBDM33S8TC025013
SCBCR23S6TC025079	SCBCM13S4TC025204	SCBDN33S4TC024986
SCBCR23S9TC025206	SCBCM13S4TC025221	SCBDN33S9TC025194
SCBCR2ZG2TC025289	SCBCM13S9TC025120	SCBDP4ZG0TC025197
SCBCR2ZG7TC025191	SCBCN13S1TC025240	SCBDP4ZG6TC025186
SCBDM33S1TC025273	SCBCP2ZG2TC025184	SCBDR4ZG7TC024784
SCBDM33S4TC024652	SCBCP2ZG8TC024881	SCBCB13S3TC025135
SCBDN33S1TC025061	SCBCP2ZG9TC025232	SCBCB13S4TC025144
SCBDN33S1TC025271	SCBDM33S9TC025182	SCBCB13S8TC024983
SCBDN33S2TC024906	SCBDM33SXTC024946	SCBCD13S8TC023908
SCBDP4ZG0TC025250	SCBDN33S0TC025214	SCBCM13S2TC025086
SCBDP4ZG4TC025168	SCBDN33S2TC025179	SCBCM13S3TC025162
SCBDP4ZG5TC025261	SCBDP4ZG5TC025065	SCBCM13S7TC024824
SCBDP4ZG5TC025275	SCBDP4ZG7TC025052	SCBCM13S7TC025083
SCBDP4ZG8TC025044	SCBDP4ZG7TC025147	SCBCM13S7TC025116
SCBDP4ZG8TC025223	SCBCB13SXTC025133	SCBCM13S9TC025103
SCBDR43S4TC025145	SCBCD13S6TC024944	SCBCM13SXTC025076
SCBDR4ZG0TC025212	SCBCM13S2TC025167	SCBCN13S7TC025128
SCBDR4ZG6TC025229	SCBCM13S4TC025171	SCBCN13SXTC025088
SCBDR4ZG7TC025241	SCBCM13S9TC025165	SCBCN1ZG9TC025070
SCBCM13S5TC025230	SCBCN13S0TC024967	SCBCP2ZG1TC025175
SCBCM13S9TC025196	SCBCN13S0TC025181	SCBCP2ZG3TC025159
SCBCN13S1TC025125	SCBCN13S1TC025173	SCBCR2ZG6TC025053

SCBCU13SXT025157	SCBDM33S6TC024958	SCBCM1ZG4TC024797
SCBDN33S0TC025021	SCBDN33S2TC024968	SCBCN13S1TC024573
SCBDN33S1TC025058	SCBDN33S4TC024759	SCBCN13S2TC024985
SCBDP4ZG0TC025037	SCBDN33S9TC024840	SCBCN13S3TC025045
SCBDP4ZG2TC025122	SCBDP4ZG0TC025068	SCBCN13S6TC024617
SCBDP4ZG3TC025095	SCBDP4ZG0TC025071	SCBCN13SXT025026
SCBDR4ZG0TC025131	SCBDP4ZG0TC025118	SCBCP2ZG5TC025048
SCBDR4ZG1TC025137	SCBDP4ZG1TC025046	SCBCP2ZG6TC024703
SCBDR4ZG4TC025049	SCBDP4ZG2TC025041	SCBCP2ZG7TC025035
SCBCB13S4TC025001	SCBDR4ZG9TC025077	SCBCP2ZG9TC024307
SCBCB13S7TC025090	SCBDR4ZG9TC025080	SCBCR2ZG1TC025042
SCBCB13S8TC024952	SCBCP2ZG5TC025101	SCBCR2ZG3TC025057
SCBCJ13S1TC024858	SCBCP2ZG1TC025063	SCBDB33S5TC024889
SCBCM13S3TC024870	SCBCP2ZG4TC025073	SCBDM33S0TC024115
SCBCM13S7TC025097	SCBDM33S1TC025029	SCBDM33S3TC025002
SCBCM1ZG8TC024575	SCBDM33S4TC025025	SCBDM33S6TC024829
SCBCN13S0TC024760	SCBDP4ZG6TC025074	SCBDM33S6TC025009
SCBCN13S3TC025126	SCBCB13S5TC025024	SCBDM33S7TC024998
SCBCN13S5TC024916	SCBCB13S6TC025016	SCBDP4ZG2TC025055
SCBCN13S7TC025081	SCBCB13S8TC024966	SCBDP4ZG8TC024928
SCBCN13S8TC024960	SCBCB13SXT024919	SCBDR4ZG4TC024192
SCBCN13S9TC024921	SCBCB13SXT024970	SCBCB13S6TC024948
SCBCP2ZG2TC025119	SCBCJ1ZG0TC024370	SCBCB13S8TC024918
SCBCP2ZG6TC025043	SCBCM13S3TC024979	SCBCB13S8TC025020
SCBCP2ZG9TC025036	SCBCM13S3TC024996	SCBCM13S1TC024883
SCBCR2ZG9TC025113	SCBCM13S5TC024465	SCBCM13S2TC025010
SCBDB33S5TC024763	SCBCM13S6TC025060	SCBCM13S3TC024965
SCBDG33S1TC024938	SCBCM13S7TC024936	SCBCM13S5TC025003
SCBDJ33SXT025085	SCBCM13S9TC025005	SCBCM13S7TC025004
SCBDM33S0TC025099	SCBCM13SXT025028	SCBCM13S8TC024914
SCBDM33S4TC024893	SCBCM1ZG2TC024992	SCBCM13S9TC024954

SCBCM13S9TC025019	SCBCN13S5TC024821	SCBDP4ZG8TC024850
SCBCM1ZG7TC024700	SCBCN13S6TC024844	SCBDR4ZG8TC024860
SCBCN13S2TC024999	SCBCN13S8TC024876	SCBCB13S1TC024856
SCBCN13S2TC025022	SCBCU13S0TC024969	SCBCB13S3TC024728
SCBCN13S5TC024981	SCBCU13S1TC024902	SCBCB13SXTTC024757
SCBCP2ZG2TC024861	SCBCU13S8TC024766	SCBCD13S3TC024318
SCBCP2ZG8TC024931	SCBDM33S8TC024864	SCBCM13S0TC024390
SCBCR13SXTTC025015	SCBDN33S4TC024910	SCBCM13S5TC024871
SCBCR2ZG0TC024934	SCBCB13S0TC024900	SCBCM13S7TC024788
SCBCR2ZG7TC024929	SCBCB13S1TC024940	SCBCM1ZG4TC024735
SCBCR2ZGXTTC024326	SCBCB13S5TC024682	SCBCM1ZG5TC024629
SCBCU13S8TC024587	SCBCM13S5TC024739	SCBCN13S0TC024709
SCBDM33S5TC024790	SCBCM13S6TC024698	SCBCN13S0TC024743
SCBDM33S6TC024975	SCBCM13S6TC024894	SCBCN13S6TC024827
SCBDN33S3TC024994	SCBCM1ZG4TC024637	SCBCN13SXTTC024684
SCBDN33S6TC024990	SCBCM1ZG7TC024695	SCBCN1ZG5TC024658
SCBDP4ZG3TC024755	SCBCM1ZG8TC024852	SCBCP2ZG1TC024799
SCBDR4ZG2TC024885	SCBCN13S5TC024866	SCBCR2ZG3TC024846
SCBDR4ZG4TC024032	SCBCN13S6TC024956	SCBCR2ZG4TC024855
SCBCB13S0TC024878	SCBCN13S7TC024898	SCBCR2ZG9TC024673
SCBCB13S2TC024963	SCBDM33S1TC024334	SCBCU13S9TC024811
SCBCB13S7TC024912	SCBDM33S4TC024456	SCBDB33S8TC024868
SCBCB13S7TC025008	SCBDN33S0TC024872	SCBDP4ZG1TC024818
SCBCM13S0TC024874	SCBDN33S8TC024635	SCBDP4ZG2TC024794
SCBCM13S0TC024924	SCBDR4ZG3TC024121	SCBDP4ZG3TC024769
SCBCM13S2TC024908	SCBCB13S2TC024848	SCBDP4ZG4TC024697
SCBCM13S2TC024942	SCBCM13S0TC024891	SCBDP4ZG4TC024778
SCBCM13S4TC024974	SCBCR13S5TC024807	SCBDP4ZG4TC024845
SCBCM13S5TC024904	SCBCR2ZG8TC024812	SCBDP4ZG5TC024806
SCBCM13S6TC024961	SCBCU13S9TC024842	SCBDP4ZG5TC024854
SCBCN13S4TC024972	SCBDM33S8TC024251	SCBDP4ZGXTTC024834

SCBCB13S0TC024816	SCBCM1ZG2TC024751	SCBCN13S9TC024773
SCBCB13S2TC024476	SCBCM1ZG5TC024730	SCBCP2ZG8TC024301
SCBCB13S4TC024835	SCBCM1ZG7TC024809	SCBCR13S1TC024710
SCBCB13S5TC024830	SCBCN13S5TC024253	SCBCR13S8TC024669
SCBCB13S8TC024837	SCBCN13SXTTC024720	SCBCU13S6TC024782
SCBCM13S0TC024714	SCBCN1ZG0TC024583	SCBCU13SXTTC024655
SCBCM13S1TC024687	SCBCP2ZG1TC024771	SCBDM33S0TC024597
SCBCM13S4TC024747	SCBCU13S4TC024795	SCBDM33S1TC024639
SCBCM13S9TC024825	SCBCU13S6TC024801	SCBDM33S4TC024666
SCBCM13S9TC024839	SCBCU13S9TC024775	SCBDM3ZG9TC024679
SCBCM13SXTTC024722	SCBDM33S0TC024602	SCBDN33S6TC024701
SCBCM1ZG2TC024832	SCBDM33S2TC024388	SCBDP4ZG4TC024473
SCBCM1ZG5TC024503	SCBDP4ZG1TC024012	SCBDP4ZG5TC024711
SCBCM1ZG5TC024677	SCBDP4ZG6TC024507	SCBDP4ZG7TC024726
SCBCM1ZGXTTC024819	SCBDP4ZG8TC024802	SCBDP4ZG8TC024749
SCBCN13S1TC024623	SCBDU33S2TC024732	SCBDU33S1TC024530
SCBCN13S4TC024163	SCBCD13S3TC024724	SCBCB13S2TC024526
SCBCN13SXTTC024376	SCBCJ13S6TC024712	SCBCB13SXTTC024483
SCBCP2ZG4TC024716	SCBCM13S1TC024270	SCBCM13S3TC024187
SCBCP2ZG7TC024791	SCBCM13S1TC024768	SCBCM13S7TC024631
SCBCR2ZG2TC024305	SCBCM13S5TC024675	SCBCM1ZG0TC024733
SCBDM33S0TC024745	SCBCM13S5TC024756	SCBCM1ZG2TC024510
SCBDM33S4TC024621	SCBCM13S6TC024653	SCBCP2ZG3TC024691
SCBDN33S5TC024740	SCBCM13SXTTC024753	SCBCP2ZG6TC024667
SCBDP4ZG4TC024814	SCBCM1ZG4TC024671	SCBCR2ZG0TC024741
SCBCB13S4TC024804	SCBCM1ZG4TC024704	SCBCR2ZG9TC024737
SCBCB13S6TC024786	SCBCM1ZG7TC024664	SCBDM33S1TC024611
SCBCB13S9TC024779	SCBCM1ZG8TC024608	SCBDM33S7TC024693
SCBCM13S0TC024762	SCBCM1ZGXTTC024495	SCBDM33S8TC024685
SCBCM13S0TC024793	SCBCM1ZGXTTC024643	SCBDM3ZG8TC024480
SCBCM13S2TC024777	SCBCN13S0TC024659	SCBDP4ZGXTTC024719

SCBDR33S0TC024715	SCBCM1ZGXTC024562	SCBCU13S5TC024594
SCBCB13S1TC024680	SCBCN13S4TC024650	SCBCU13S9TC024601
SCBCB13S4TC024625	SCBCP2ZG0TC024633	SCBDM33S2TC024018
SCBCM13S6TC024491	SCBCU13S1TC024558	SCBDN3ZG9TC024534
SCBCM13S9TC024209	SCBCU13S2TC024505	SCBDP4ZG6TC024572
SCBCM1ZG4TC024718	SCBCU13S4TC024571	SCBDP4ZG8TC024511
SCBCN13S5TC024706	SCBDM33S0TC024230	SCBCB13S1TC024579
SCBCN13S8TC024313	SCBDM33S1TC024124	SCBCB13S5TC024472
SCBCN13S8TC024599	SCBDM33S4TC024585	SCBCM13S5TC024532
SCBCR2ZG4TC024662	SCBDM33S9TC024548	SCBCM13S7TC024516
SCBCU13S0TC024616	SCBDN33S7TC024478	SCBCM1ZG3TC024533
SCBCU13S3TC024707	SCBDN33S7TC024660	SCBCN1ZG2TC024553
SCBCU13SXTTC024641	SCBDP4ZG8TC024590	SCBCP2ZG0TC024311
SCBDB33S6TC024321	SCBDP4ZG9TC024355	SCBDB33S3TC024258
SCBDM33S7TC024497	SCBDP4ZGXTC024560	SCBDN33S6TC024570
SCBDM33S9TC024565	SCBDP4ZGXTC024574	SCBDP4ZG4TC024540
SCBDM3ZG6TC024607	SCBDU33S2TC024648	SCBDR4ZGXTC024567
SCBDN33S9TC024627	SCBCB13S4TC024589	SCBCM13S5TC024546
SCBDN3ZG5TC024689	SCBCB13S7TC024425	SCBCM13S6TC024538
SCBDN3ZGXTC024672	SCBCM13S5TC024613	SCBCM13SXTTC024512
SCBDP4ZG9TC024615	SCBCM13S7TC024595	SCBCN13S1TC024508
SCBDR4ZG7TC024414	SCBCM1ZG2TC024605	SCBCN13S5TC024513
SCBDU33S1TC024656	SCBCM1ZG5TC024372	SCBCN13S9TC024353
SCBDU33S4TC024554	SCBCN13S0TC024628	SCBCP2ZG6TC024555
SCBCB13S4TC024592	SCBCN13S5TC023930	SCBCP2ZG9TC024551
SCBCB13S8TC024322	SCBCN13S8TC024568	SCBCR2ZG5TC024458
SCBCM13S2TC024603	SCBCN1ZG3TC024545	SCBCU13S0TC024499
SCBCM13S5TC024563	SCBCN1ZG4TC024604	SCBCU13S8TC024525
SCBCM13S5TC024644	SCBCP2ZG5TC024577	SCBCU13S8TC024556
SCBCM1ZG2TC024541	SCBCP2ZGXTC024543	SCBDN33S6TC024536
SCBCM1ZGXTC024528	SCBCU13S2TC024620	SCBDN33SXTTC024569

SCBDP4ZG4TC024487	SCBCN13S7TC024481	SCBDP4ZG2TC024424
SCBDP4ZG5TC024501	SCBCN1ZG1TC024432	SCBDP4ZG5TC024000
SCBDR4ZG4TC024550	SCBCR2ZG0TC024271	SCBDP4ZG7TC024449
SCBDR4ZGXTTC024522	SCBCR2ZG6TC024453	SCBCB13S2TC024395
SCBDU33S2TC024360	SCBDB33S5TC024309	SCBCB13S4TC024396
SCBCB13S4TC024463	SCBDM33S2TC024035	SCBCB13S6TC024402
SCBCG13S1TC024521	SCBDM33S6TC024443	SCBCB13SXTTC024421
SCBCM13S0TC023983	SCBDM33SXTTC024462	SCBCD13S8TC024427
SCBCM13S9TC024520	SCBDN33S4TC024454	SCBCM13S1TC024382
SCBCN13S0TC024404	SCBDN33S4TC024468	SCBCM13S3TC024416
SCBCN13S1TC024489	SCBDN33S4TC024485	SCBCM13S4TC024294
SCBCN13S9TC024515	SCBDR4ZG2TC024367	SCBCM13S4TC024361
SCBCN13SXTTC024474	SCBDR4ZGXTTC024441	SCBCM13S5TC024255
SCBCR2ZG6TC024484	SCBCB13S0TC024444	SCBCM13S5TC024269
SCBDM33S0TC024518	SCBCB13S7TC024411	SCBCM13SXTTC024381
SCBDM33S3TC023749	SCBCB13S7TC024439	SCBCM13SXTTC024431
SCBDM33S6TC024412	SCBCM13S7TC024046	SCBCN13S3TC024333
SCBDM33S8TC024363	SCBCM13S7TC024435	SCBCN13S5TC024298
SCBDN33S3TC024493	SCBCM1ZG5TC024419	SCBCN13S5TC024320
SCBDN33S4TC024504	SCBCN13S3TC024297	SCBCN13S5TC024379
SCBDN33SXTTC024524	SCBCN13S4TC024406	SCBCN13S7TC024335
SCBDP4ZG0TC023966	SCBCN13S6TC024245	SCBCR2ZG2TC024420
SCBDP4ZG0TC024373	SCBCN13S9TC024448	SCBDM33S4TC024392
SCBDP4ZG1TC024429	SCBCN1ZG4TC024344	SCBDM33S7TC024385
SCBCB13S0TC024332	SCBCN1ZG9TC024436	SCBDM33S7TC024418
SCBCB13S1TC024467	SCBCP2ZG8TC024119	SCBDM33S8TC024282
SCBCB13S1TC024470	SCBCR2ZG4TC024399	SCBDP4ZG1TC024303
SCBCB13S5TC024455	SCBDB33S6TC024383	SCBDP4ZG4TC024330
SCBCB13S8TC024451	SCBDN33S5TC024446	SCBDP4ZG4TC024408
SCBCB13S9TC024460	SCBDN33S8TC024327	SCBDP4ZG9TC024422
SCBCM13S5TC024191	SCBDP4ZG0TC024437	SCBDR4ZG7TC024400

SCBCB13S2TC024364	SCBCP2ZG0TC024289	SCBCM13S3TC023783
SCBCJ1ZG7TC024351	SCBCP2ZG4TC024232	SCBCM13S4TC024263
SCBCM13S3TC024092	SCBDM33S4TC024182	SCBCM13S6TC024281
SCBCM13S7TC024337	SCBDM33S6TC024166	SCBCM13S7TC024239
SCBCN13SXTC024409	SCBDM33S6TC024300	SCBCM13S9TC024257
SCBDM33SXTC024378	SCBDM3ZG2TC024247	SCBCN13S0TC024080
SCBDN33S5TC024317	SCBDN33S3TC024204	SCBCN13S2TC024114
SCBCB13S0TC024346	SCBDN33S8TC024201	SCBCN13S2TC024243
SCBCB13S2TC024350	SCBDP4ZG0TC024325	SCBCN13S2TC024274
SCBCB13S5TC024133	SCBDP4ZG3TC024349	SCBCN13S3TC024235
SCBCB13S6TC024304	SCBDP4ZG9TC024338	SCBCN13S3TC024266
SCBCB13S7TC024375	SCBDR4ZG0TC024268	SCBCN13S9TC024224
SCBCG13S8TC024340	SCBCN13S1TC024315	SCBCP2ZG0TC024194
SCBCM13S5TC024210	SCBCN13S8TC024277	SCBCP2ZG1TC024107
SCBCM13SXTC024090	SCBCN13S9TC024160	SCBCP2ZG3TC024206
SCBCN13S0TC024290	SCBCN1ZG6TC024328	SCBCP2ZG5TC024241
SCBCN13S4TC024292	SCBCP2ZG4TC024229	SCBCP2ZG8TC024248
SCBCN13S8TC024215	SCBCP2ZG4TC024280	SCBCP2ZG9TC024260
SCBCP2ZG7TC024287	SCBCP2ZG6TC024250	SCBCP2ZGXTC024154
SCBCP2ZG9TC024386	SCBCP2ZG6TC024314	SCBDM33S8TC024170
SCBDM33S1TC024155	SCBCP2ZGXTC024218	SCBDM33S9TC024226
SCBDM33S1TC024365	SCBCR2ZG3TC024295	SCBDN33S4TC024275
SCBDP4ZG5TC024398	SCBCR2ZG5TC024203	SCBDN33S5TC024219
SCBCM13S0TC024356	SCBDM33S0TC024261	SCBDN33S7TC024254
SCBCM13S1TC024284	SCBDM33S3TC024240	SCBDP4ZG4TC024196
SCBCM13S1TC024348	SCBDM33S8TC024279	SCBDP4ZG5TC024272
SCBCM13S4TC024358	SCBDP4ZG5TC024286	SCBDP4ZG6TC024152
SCBCM13S7TC024368	SCBDP4ZG8TC024265	SCBDP4ZG7TC024189
SCBCM1ZGXTC024156	SCBDR4ZG0TC024237	SCBDP4ZGXTC024185
SCBCN13S2TC024310	SCBDR4ZG4TC024323	SCBDR4ZG2TC024045
SCBCN13S4TC024342	SCBDR4ZG5TC023973	SCBCM13S0TC024227

SCBCM13S1TC024236	SCBCN13S5TC024172	SCBCM13S3TC023959
SCBCM13S2TC024228	SCBCN13S6TC024097	SCBCM13S4TC024036
SCBCM13S3TC024190	SCBCP2ZG5TC024143	SCBCM13S7TC023964
SCBCM13S8TC024167	SCBCP2ZGXTC024123	SCBCM13S7TC023981
SCBCM13SXTC024171	SCBCP2ZGXTC024199	SCBCM13S9TC023884
SCBCM13SXTC024221	SCBCR2ZG8TC024177	SCBCM13S9TC023951
SCBCN13S1TC024184	SCBDN33S0TC024175	SCBCM13S9TC024128
SCBCN13S4TC024213	SCBDP4ZG6TC024216	SCBCN13S1TC024105
SCBCN13SXTC024197	SCBDP4ZG9TC023707	SCBCN13S2TC024100
SCBCP2ZG0TC023921	SCBCM13S0TC024096	SCBCN13S2TC024145
SCBCR2ZG8TC023949	SCBCM13S2TC023824	SCBCP2ZG8TC024072
SCBDM33S2TC024178	SCBCM13S2TC024150	SCBCP2ZGXTC024008
SCBDM33S5TC024207	SCBCM13S3TC024111	SCBCR2ZG2TC024126
SCBDM33S7TC024144	SCBCM13S3TC024173	SCBDM33S3TC024027
SCBDM33S7TC024161	SCBCM13S6TC023860	SCBDM33S5TC024109
SCBDM33S9TC024212	SCBCM13S7TC023866	SCBDM33S6TC024104
SCBDM33SXTC024168	SCBCM13S7TC024113	SCBDM33S9TC024078
SCBDN33S0TC024158	SCBCN13S0TC024063	SCBDN33S4TC024082
SCBDN33S7TC024223	SCBCN13S5TC024141	SCBDP4ZG0TC024101
SCBDP4ZG0TC024244	SCBCN13S7TC024089	SCBDP4ZG4TC024148
SCBDP4ZG1TC024057	SCBCP2ZG0TC024146	SCBDP4ZG6TC024068
SCBDP4ZG5TC024059	SCBCP2ZG4TC024151	SCBDP4ZG6TC024135
SCBDP4ZG5TC024076	SCBCP2ZG6TC024054	SCBDP4ZG7TC024127
SCBDP4ZG6TC024233	SCBCR2ZG9TC024110	SCBDR4ZG9TC024091
SCBDR4ZG7TC024140	SCBDM33S9TC024131	SCBCM13S4TC023971
SCBCM13S2TC024181	SCBDN33SXTC024118	SCBCM13S7TC024029
SCBCM13S7TC024130	SCBDP4ZG4TC024098	SCBCM13SXTC024056
SCBCM13S9TC024176	SCBCM13S0TC024079	SCBCN13S0TC023995
SCBCM13SXTC024087	SCBCM13S1TC024088	SCBCN13S0TC024094
SCBCM13SXTC024137	SCBCM13S2TC024052	SCBCN13S2TC023979
SCBCN13S4TC024180	SCBCM13S2TC024116	SCBCN13S6TC024066

SCBCN13S8TC024005	SCBCR2ZG0TC024044	SCBCM13S8TC023889
SCBCN13S8TC024103	SCBCR2ZG7TC024039	SCBCM13S9TC024002
SCBCN13SXTTC024085	SCBDM33S7TC023883	SCBCN13S0TC023947
SCBCP2ZG0TC023711	SCBDN33S3TC023859	SCBCN13S3TC023957
SCBCP2ZG5TC023798	SCBDN33S7TC024030	SCBCN13S3TC023991
SCBCP2ZG5TC024031	SCBDN33S8TC024053	SCBCN13S4TC023904
SCBCP2ZG8TC024069	SCBDP4ZG2TC023984	SCBCN13S5TC023913
SCBCP2ZG8TC024122	SCBDP4ZG5TC023719	SCBCN13S7TC023900
SCBCP2ZG9TC024016	SCBDP4ZG5TC023977	SCBCN13SXTTC023986
SCBCP2ZGXTTC024025	SCBDP4ZG5TC024014	SCBCP2ZG1TC023989
SCBDM33S2TC023970	SCBDP4ZG6TC024006	SCBCP2ZG7TC023916
SCBDM33S3TC024061	SCBDP4ZG6TC024037	SCBCR2ZG9TC023927
SCBDM33S9TC023786	SCBDP4ZG6TC024040	SCBDM33S6TC023714
SCBDN33S6TC023905	SCBDP4ZG8TC023987	SCBDP4ZG4TC023811
SCBDP4ZG3TC023993	SCBDP4ZG8TC024024	SCBDP4ZG4TC023940
SCBDP4ZG4TC024070	SCBDP4ZG9TC024047	SCBDP4ZG5TC023980
SCBDP4ZG5TC024112	SCBDR4ZG4TC023771	SCBDP4ZG7TC023902
SCBDP4ZG8TC023942	SCBCM13S8TC023827	SCBDP4ZG7TC023950
SCBDP4ZG9TC024050	SCBCM13S8TC023939	SCBDP4ZGXTTC023845
SCBDR4ZG8TC024065	SCBCN13S6TC024021	SCBDR4ZG2TC023932
SCBCM13S6TC023969	SCBCP2ZG4TC024019	SCBCM13S1TC023961
SCBCM13S6TC024023	SCBCP2ZG7TC023835	SCBCM13S2TC023953
SCBCM13S7TC023897	SCBCP2ZG8TC024041	SCBCN13S5TC023829
SCBCM13SXTTC024011	SCBDM33S0TC023840	SCBCN13S9TC023879
SCBCM13SXTTC024042	SCBDP4ZG2TC024004	SCBCP2ZG1TC023846
SCBCN13S3TC024073	SCBDP4ZG5TC023946	SCBCP2ZG2TC023967
SCBCN13S5TC024009	SCBDP4ZG9TC023867	SCBCP2ZG3TC023864
SCBCP2ZG0TC024034	SCBDR4ZG6TC023996	SCBCP2ZG3TC023945
SCBCP2ZG1TC024060	SCBCM13S0TC023997	SCBCP2ZG3TC023962
SCBCP2ZG3TC023976	SCBCM13S2TC023872	SCBCP2ZG5TC023820
SCBCP2ZG3TC024075	SCBCM13S4TC023999	SCBCP2ZG6TC023941

SCBCP2ZG8TC023925	SCBCP2ZG4TC023887	SCBCP2ZG8TC023813
SCBCP2ZGXTTC023974	SCBCP2ZG6TC023874	SCBCR2ZG2TC023803
SCBDM33S4TC023937	SCBCP2ZG7TC023933	SCBCR2ZG3TC023812
SCBDM33S6TC023955	SCBCR2ZG2TC023882	SCBCR2ZG9TC023796
SCBDM33S9TC023920	SCBCR2ZG9TC023779	SCBDM33S1TC023815
SCBDN33S9TC023963	SCBDM33S2TC023855	SCBDM33S9TC023870
SCBDP4ZG1TC023944	SCBDM33S9TC023836	SCBDM33SXTTC023697
SCBDP4ZG3TC023928	SCBDM33S9TC023898	SCBDP4ZG1TC023880
SCBDP4ZG9TC023917	SCBDN33S0TC023799	SCBDP4ZG3TC023850
SCBDR4ZG1TC023873	SCBDP4ZG4TC023923	SCBDP4ZG4TC023808
SCBDR4ZG7TC023876	SCBDP4ZG5TC023896	SCBDP4ZG4TC023825
SCBCM13S1TC023877	SCBDP4ZG8TC023777	SCBDP4ZG5TC023722
SCBCM13S5TC023851	SCBDP4ZGXTTC023862	SCBDP4ZG6TC023843
SCBCN13S6TC023791	SCBDP4ZGXTTC023893	SCBDP4ZG7TC023821
SCBCP2ZG2TC023919	SCBDP4ZGXTTC023912	SCBDP4ZGXTTC023795
SCBCP2ZG2TC023936	SCBDP4ZGXTTC023926	SCBDP4ZGXTTC023828
SCBCP2ZG6TC023938	SCBDR4ZG1TC023890	SCBDR4ZG0TC023833
SCBCP2ZG8TC023911	SCBDR4ZG5TC023746	SCBCM13S3TC023699
SCBCP2ZG9TC023822	SCBCN13S5TC023720	SCBCM13S4TC023842
SCBCR2ZG5TC023892	SCBCR2ZG0TC023895	SCBCM13S6TC023857
SCBDJ33S9TC023909	SCBDM33S2TC023774	SCBCN13S7TC023816
SCBDM33S2TC023886	SCBCM13S0TC023854	SCBCN13S9TC023848
SCBDM33S9TC023805	SCBCM13S1TC023751	SCBCP2ZG2TC023788
SCBDN33S6TC023838	SCBCM13SXTTC023831	SCBCP2ZG6TC023762
SCBDP4ZG0TC023935	SCBCP2ZG0TC023806	SCBCP2ZG8TC023794
SCBDP4ZG3TC023802	SCBCP2ZG0TC023837	SCBCP2ZG9TC023769
SCBCM13S2TC023922	SCBCP2ZG0TC023868	SCBDM33S4TC023792
SCBCM13S5TC023901	SCBCP2ZG1TC023698	SCBDM33SXTTC023747
SCBCM13S6TC023907	SCBCP2ZG1TC023801	SCBDP4ZG1TC023703
SCBCP2ZG2TC023760	SCBCP2ZG5TC023834	SCBDP4ZG1TC023765
SCBCP2ZG3TC023914	SCBCP2ZG7TC023754	SCBDP4ZG3TC023735

SCBDP4ZG6TC023759	SCBDN33S7TC023752
SCBDP4ZGXTC023733	SCBDP4ZG2TC023726
SCBDR4ZG4TC023818	SCBDP4ZG6TC023700
SCBCM13S5TC023767	SCBDP4ZG8TC023729
SCBCM13S6TC023809	SCBDR4ZG1TC023694
SCBCM13S7TC023785	SCBDR4ZG7TC023716
SCBCM13S9TC023772	SCBCM13S1TC023734
SCBCN13S1TC023732	SCBCM13S6TC023731
SCBCN13S3TC023781	SCBCM13S9TC023741
SCBCN13S9TC023817	SCBCN13S4TC023708
SCBCP2ZG2TC023743	SCBDP4ZG9TC023495
SCBCP2ZG2TC023757	SCBCN13S4TC023725
SCBCP2ZG3TC023704	SCBCN13S5TC023748
SCBCP2ZG5TC023736	SCBCN13S8TC023727
SCBCP2ZG7TC023690	SCBDM33S2TC023712
SCBCP2ZG7TC023706	SCBDN33S4TC023739
SCBCP2ZG7TC023723	SCBDM33S5TC023493
SCBCP2ZGXTC023764	
SCBCP2ZGXTC023778	
SCBCR2ZG0TC023718	
SCBCR2ZG1TC023775	
SCBCR2ZG3TC023695	
SCBCR2ZG3TC023745	
SCBCR2ZG6TC023738	
SCBCR2ZG7TC023702	
SCBCR2ZG8TC023692	
SCBCR2ZGXTC023709	
SCBDM33S0TC023742	
SCBDM33S4TC023789	
SCBDM33S9TC023691	
SCBDN33S1TC023780	