

Field campaign

Topic	Front Airspring - Retaining ring check Continental GT/GTC/Flying Spur 25MY (SC25 /35)
Market area	Bentley: worldwide (2WBE),China 796 VW Import Comp. Ltd (Vico), Beijing (6796)
Brand	Bentley
Transaction No.	2078462/1
Campaign number	ED63
Note	
Type	
US code	

Vehicle data

25MY Continental GT/GTC and Flying Spur

Sales types

Type	MY	Brand	Designation	Engine code	Gearbox code	Final drive code
Z23*	2025	E		*	*	*
Z24*	2025	E		*	*	*
Z32*	2025	E		*	*	*

Documents

Document name
master.xml
sc2535vinlist.pdf

Notes



Technical background

The retaining ring on the front air spring dampers may not be correctly seated on select vehicles. If incorrectly seated, it can cause the retaining ring on the top of the air spring damper to come loose and release the air in the air spring. As a result the driving characteristics of the vehicle can be adversely affected but full and stable handling of the vehicle is retained in such a situation.

This campaign requires the inspection of the retaining ring 'A' shown below, and if it is not correctly fitted, the affected air spring damper must be replaced to ensure correct operation of the vehicle.



Figure 1. Front Air spring damper Retaining Ring location

Remedy

Inspect the retaining ring on the top mount of the front air spring dampers on both sides of the vehicle using the designated check tool.

If the tool fits inside the retaining ring it is correctly seated, no further action is required.

If the tool does not fit inside the retaining ring it is not correctly seated, replace the air spring damper assembly on the affected side(s).

Customer notification

Customers of affected vehicles will be notified in writing by their Bentley retailer to arrange an appointment.

Please ensure that all affected vehicles are checked and repaired at the nearest opportunity, make a note of the required action on the workshop order before it is signed by the customer.

If it is omitted to perform the work required during a workshop visit, the customer should be notified immediately.

You should also pass on this information to your new and used car sales department so that affected vehicles are checked and repaired immediately.

Warranty

Claim Type: 790 or 710

Service Number: ED63

Damage Code: 00 66

Criteria ID: 01

Labour

Retaining ring check

Labour Operation Code – 43 31 01 99

Time – 20 TU

Air suspension system to discharge and charge (GGF / Guided Functions)

Labour Operation Code – 01 50 00 00

Time – 30 TU

Front Spring damper x1 to Remove and Install

Labour Operation Code – 43 31 19 00

Time – 240 TU

Front Spring dampers x2 to Remove and Install

Labour Operation Code – 43 31 20 00

Time – 410 TU

Time to perform Vehicle Height Front and Rear Check

Labour Operation Code – 44 96 03 00

Time – 50 TU

Time for GFF/Guided Functions for Vehicle Height Front and Rear Check

Labour Operation Code – 01 50 00 00

Time – 10 TU

Time to perform Four Wheel Alignment Check

Labour Operation Code – 44 95 03 00

Time – 90 TU

If the vehicles wheel alignment requires adjustment, please refer to the applicable adjustment Labour Operation codes to be claimed as required per ElsaPro.

Parts

Continental GT / GTC

Part Number	Description	Quantity
975 616 038 AG	Front RH Air Spring Damper	1 (per affected side)
975 616 037 AG	Front LH Air Spring Damper	1 (per affected side)
N 107 037 01	Hex collared bolt (M10X52) SINGLE USE	3 (per affected side)
N 106 283 01	Hex collared bolt (M12X1,5X90) SINGLE USE	2 (per affected side)
N 104 029 04	Hexagon collar nut (M12)	2 (per affected side)

Flying Spur

Part Number	Description	Quantity
975 616 038 AH	Front RH Air Spring Damper	1 (per side affected)
975 616 037 AH	Front LH Air Spring Damper	1 (per affected side)
N 107 037 01	Hex collared bolt (M10X52) SINGLE USE	3 (per affected side)
N 106 283 01	Hex collared bolt (M12X1,5X90) SINGLE USE	2 (per affected side)
N 104 029 04	Hexagon collar nut (M12)	2 (per affected side)

For single use parts as stated in the associated operations instructions in ElsaPro, always refer to ETKA parts catalogue.

Parts supply

Specialist Tool Distribution Notice – WT10711

A specialist check tool (WT10711) will be automatically issued and supplied directly to retailers. All retailers will receive 1x WT10711. This tool will be used in accordance with the procedure outlined in the measure section.



Figure 2. Specialist check tool (WT10711)

If replacement of an air spring damper is required, a full Technical DISS query must be raised. This query must include photographic evidence clearly showing the failure. Only once the query is validated will the ordering and supply of replacement parts be authorised.

For all other parts please refer to the ETKA Parts Catalogue to ensure correct identification and ordering.

Parts despatch control

Not applicable

Repair instructions

 Notes

Technical background

The retaining ring on the front air spring dampers may not be correctly seated on select vehicles. If incorrectly seated, it can cause the retaining ring on the top of the air spring damper to come loose and release the air in the air spring. As a result the driving characteristics of the vehicle can be adversely affected but full and stable handling of the vehicle is retained in such a situation.

This campaign requires the inspection of the retaining ring 'A' shown below, and if it is not correctly fitted, the affected air spring damper must be replaced to ensure correct operation of the vehicle.

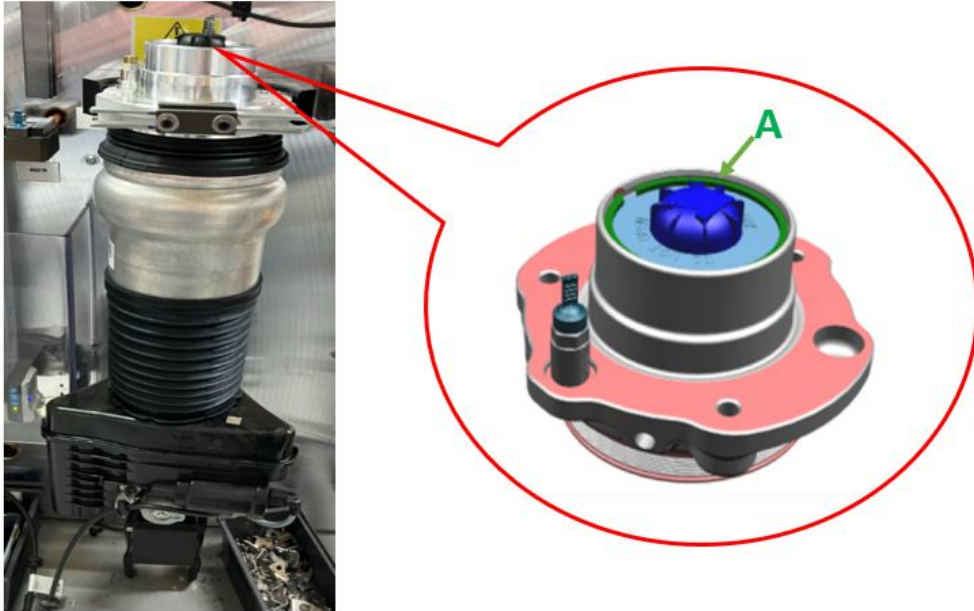


Figure 1. Front Air spring damper Retaining Ring location

Check

If the vehicle is not already listed as repaired in the 'Repair history' section of ElsaPro, check the 'Identification' section of this document. In the event that the campaign has not been applied, please carry out the required work in accordance with these instructions.

Parts

Continental GT / GTC

Part Number	Description	Quantity
975 616 038 AG	Front RH Air Spring Damper	1 (per affected side)
975 616 037 AG	Front LH Air Spring Damper	1 (per affected side)
N 107 037 01	Hex collared bolt (M10X52) SINGLE USE	3 (per affected side)
N 106 283 01	Hex collared bolt (M12X1,5X90) SINGLE USE	2 (per affected side)
N 104 029 04	Hexagon collar nut (M12)	2 (per affected side)

Flying Spur

Part Number	Description	Quantity
975 616 038 AH	Front RH Air Spring Damper	1 (per side affected)
975 616 037 AH	Front LH Air Spring Damper	1 (per affected side)
N 107 037 01		3 (per affected side)

	Hex collared bolt (M10X52) SINGLE USE	
N 106 283 01	Hex collared bolt (M12X1,5X90) SINGLE USE	2 (per affected side)
N 104 029 04	Hexagon collar nut (M12)	2 (per affected side)

For single use parts as stated in the associated operations instructions in ElsaPro, always refer to ETKA parts catalogue.

Tools

- Specialist tool — Retaining Ring check tool (WT10711)

Work



WARNING

Always follow all general safety warnings and repair instructions outlined in ElsaPro before commencing any work on the vehicle. This includes but it is not limited to: Safe handling of pressurised systems, suspension components under load, and electrical isolation procedures. Failure to observe these precautions may result in vehicle damage or personal injury.

For vehicles with a high voltage system



DANGER

High voltage can cause fatal injury. Danger of severe or fatal injuries from high-voltage components or high-voltage wiring if they are severely damaged. Take all necessary precautions when working in the vicinity of high voltage components. Refer to ElsaPro Safety precautions when working in the vicinity of high voltage components. Rep. Gr. 00



CAUTION

Ensure that the CORRECT personal protective equipment is worn while working with compressed air.

The following procedure is symmetrically similar for both sides of the vehicle.

Inspection of the front air spring damper top mount retaining ring

1. Open the bonnet
2. Clean any dirt or debris from the retaining ring area.



Figure 3. Check tool to air spring damper top mount fitment example

3. Carefully insert the check tool onto the air spring damper top mount as shown in figure 3.

! NOTICE

IMPORTANT: It may be necessary to **LIGHTLY** reposition any lines or cables obstructing air spring top mount. Failure to observe these precautions may result in vehicle damage.



Figure 4. *OK check tool fitment*

4. Verify the check tool is fully seating inside the retaining ring as shown in figure 4.

5. If the check tool sits flush without obstruction, the retaining ring is correctly installed. No further Action is necessary. Reinstall any removed trim and refer to the Identification section.



Figure 5. NOK check tool fitment

6. If the check tool is obstructed and does not fit inside the retaining ring as shown in figure 5.

! NOTICE

If retaining ring condition is confirmed as NOT OK as per figure 5, a Technical DISS query must be raised, including photographic evidence clearly showing the failure. Once the DISS query is validated, the supply of replacement parts will be authorised.

- Position the vehicle on a ramp and set to "JACK" mode. Refer to "Raising and supporting the car" ElsaPro → Booklet 404
- Discharge the air suspension system. Refer to ElsaPro Repair Group 43 "Air suspension system - To discharge and charge"
- Replace the affected front air spring damper. Refer to ElsaPro, Repair Group 40 'Front air spring damper – To remove and fit'.

Follow all associated operations and warnings.



Information

If the fault is on a vehicle with a mileage/km of more than 6,214 mls/ 10,000 km on the affected side, both air spring dampers must be replaced.


 **NOTICE**

Within this procedure there are single use items which must be replaced and not reused. Ensure that new replacements are available prior to starting this procedure. Also ensure all fasteners are torqued to specification.

6. Once the affected air spring damper is replaced.

- Recharge the air suspension system. Refer to ElsaPro Repair Group 43 "Air suspension system - To discharge and charge"
- Perform all pre adjustment vehicle geometry checks, and calibrate the ride height of the vehicle. Refer to ElsaPro Repair Group 44 "Pre-adjustment checks and requirements".
- After calibrating the vehicles ride height, position the vehicle on the appropriate ramp for geometry adjustments/alignment and refer to ElsaPro Repair Group 44 "Vehicle geometry - Wheel alignment and ride heights".

The vehicle alignment should be measured using Bentley approved wheel alignment equipment.

 **CAUTION**

Once the wheel alignment has been carried out, where fitted the following "Bentley Safeguard" systems **MUST** be recalibrated. Failure to carry out these adjustments will lead to erratic operation of the driver assist systems.

- Automatic cruise control
- Night vision
- Front camera for drive assist systems
- Rear radar
- Top view / rear view camera (specification dependant)
- Matrix headlights (specification dependant)

Final Check

- If the air spring damper(s) were replaced, reconfirm the inspection gauge shows correct fitment, complete steps 1 – 5.
- Refit any removed trim.
- Refer to the Identification Section.

Identification

Once the applicable action has been conducted, the operative must submit a warranty claim as this will show the service campaign action as complete within Elsa Pro "Repair history".

You must also add a yellow paint mark to both checked air spring dampers as per the image below.



[▲ Repair instructions](#) [▲ Notes](#)

SCBBF53S0SC021579	SCBBF5ZG4SC022611	SCBBG53S3SC021301
SCBBF53S1SC021297	SCBBF5ZG5SC022407	SCBBG53S3SC021315
SCBBF53S1SC021557	SCBBF5ZG7SC021288	SCBBG53S3SC021329
SCBBF53S1SC022580	SCBBF5ZG8SC021574	SCBBG53S3SC021346
SCBBF53S2SC021387	SCBBF5ZG9SC021275	SCBBG53S3SC021380
SCBBF53S2SC022653	SCBBF5ZG9SC022457	SCBBG53S3SC021413
SCBBF53S3SC021284	SCBBG53S0SC021269	SCBBG53S3SC021427
SCBBF53S3SC022581	SCBBG53S0SC021286	SCBBG53S3SC022433
SCBBF53S4SC021472	SCBBG53S0SC021305	SCBBG53S3SC022576
SCBBF53S4SC022590	SCBBG53S0SC021319	SCBBG53S4SC021257
SCBBF53S5SC021206	SCBBG53S0SC021417	SCBBG53S4SC021307
SCBBF53S5SC021559	SCBBG53S0SC021451	SCBBG53S4SC021341
SCBBF53S5SC021710	SCBBG53S0SC022728	SCBBG53S4SC021369
SCBBF53S5SC022789	SCBBG53S1SC021281	SCBBG53S4SC021372
SCBBF53S6SC021571	SCBBG53S1SC021443	SCBBG53S4SC021405
SCBBF53S8SC021376	SCBBG53S1SC021507	SCBBG53S4SC021453
SCBBF53S8SC021409	SCBBG53S1SC022141	SCBBG53S4SC021484
SCBBF53S8SC021474	SCBBG53S1SC022513	SCBBG53S4SC022571
SCBBF53S8SC022690	SCBBG53S1SC022642	SCBBG53S5SC021333
SCBBF53S9SC021354	SCBBG53S2SC021273	SCBBG53S5SC021364
SCBBF53S9SC022777	SCBBG53S2SC021290	SCBBG53S5SC021378
SCBBF53SXSC021251	SCBBG53S2SC021323	SCBBG53S5SC021395
SCBBF53SXSC022125	SCBBG53S2SC021337	SCBBG53S5SC021459
SCBBF5ZG1SC021299	SCBBG53S2SC021385	SCBBG53S5SC022613
SCBBF5ZG1SC021335	SCBBG53S2SC021435	SCBBG53S5SC022661
SCBBF5ZG1SC021366	SCBBG53S2SC021449	SCBBG53S5SC022708
SCBBF5ZG2SC021277	SCBBG53S2SC021726	SCBBG53S5SC022711
SCBBF5ZG2SC022560	SCBBG53S2SC022584	SCBBG53S5SC022742
SCBBF5ZG2SC022588	SCBBG53S2SC022603	SCBBG53S6SC021261
SCBBF5ZG4SC021359	SCBBG53S2SC022746	SCBBG53S6SC021311
SCBBF5ZG4SC021703	SCBBG53S3SC021265	SCBBG53S6SC021325

SCBBG53S6SC021566	SCBBG53SXSC021425	SCBBR6ZG1SC022594
SCBBG53S6SC021731	SCBBG53SXSC021439	SCBBR6ZG1SC022644
SCBBG53S6SC022507	SCBBG53SXSC021456	SCBBR6ZG2SC021423
SCBBG53S7SC021253	SCBBG53SXSC021702	SCBBR6ZG2SC021437
SCBBG53S7SC021351	SCBBG53SXSC022445	SCBBR6ZG2SC022524
SCBBG53S7SC021382	SCBBG53SXSC022526	SCBBR6ZG2SC022605
SCBBG53S7SC021401	SCBBG53SXSC022719	SCBBR6ZG2SC022717
SCBBG53S7SC021432	SCBBH53S3SC021568	SCBBR6ZG2SC022748
SCBBG53S7SC021561	SCBBJ53S3SC021204	SCBBR6ZG2SC022801
SCBBG53S7SC021706	SCBBJ53S3SC021221	SCBBR6ZG3SC021303
SCBBG53S8SC021293	SCBBJ53S7SC021349	SCBBR6ZG3SC021317
SCBBG53S8SC021357	SCBBL53S2SC022676	SCBBR6ZG3SC021415
SCBBG53S8SC021391	SCBBL53S4SC022744	SCBBR6ZG3SC021429
SCBBG53S8SC021407	SCBBP6ZG0SC022799	SCBBR6ZG3SC022127
SCBBG53S8SC021441	SCBBP6ZG1SC022682	SCBBR6ZG3SC022466
SCBBG53S8SC021455	SCBBP6ZG5SC022703	SCBBR6ZG3SC022631
SCBBG53S8SC021469	SCBBP6ZG6SC022726	SCBBR6ZG4SC021343
SCBBG53S8SC021715	SCBBP6ZG7SC022699	SCBBR6ZG4SC021374
SCBBG53S8SC022136	SCBBR53S0SC021718	SCBBR6ZG4SC021486
SCBBG53S8SC022623	SCBBR53S3SC021230	SCBBR6ZG4SC021732
SCBBG53S9SC021397	SCBBR53S4SC021219	SCBBR6ZG4SC022511
SCBBG53S9SC021464	SCBBR53S6SC021321	SCBBR6ZG5SC021237
SCBBG53S9SC021478	SCBBR53S7SC021361	SCBBR6ZG5SC021271
SCBBG53S9SC021481	SCBBR53S7SC021716	SCBBR6ZG5SC021447
SCBBG53S9SC021495	SCBBR6ZG0SC021209	SCBBR6ZG5SC022436
SCBBG53S9SC021545	SCBBR6ZG0SC021212	SCBBR6ZG5SC022453
SCBBG53S9SC021576	SCBBR6ZG0SC022540	SCBBR6ZG5SC022520
SCBBG53S9SC022498	SCBBR6ZG0SC022649	SCBBR6ZG5SC022601
SCBBG53S9SC022517	SCBBR6ZG0SC022795	SCBBR6ZG6SC021196
SCBBG53SXSC021389	SCBBR6ZG1SC022448	SCBBR6ZG6SC021232
SCBBG53SXSC021411	SCBBR6ZG1SC022496	SCBBR6ZG6SC021263

SCBBR6ZG6SC021327	SCBCF13S0SC022597	SCBCF13S5SC022501
SCBBR6ZG6SC022123	SCBCF13S0SC022633	SCBCF13S6SC021244
SCBBR6ZG7SC021241	SCBCF13S1SC021264	SCBCF13S6SC021289
SCBBR6ZG7SC021403	SCBCF13S1SC021328	SCBCF13S6SC022586
SCBBR6ZG7SC021479	SCBCF13S1SC021460	SCBCF13S6SC022720
SCBBR6ZG7SC021563	SCBCF13S1SC021605	SCBCF13S6SC022796
SCBBR6ZG7SC021708	SCBCF13S1SC021653	SCBCF13S7SC021267
SCBBR6ZG8SC021202	SCBCF13S1SC022463	SCBCF13S7SC021320
SCBBR6ZG8SC021295	SCBCF13S1SC022477	SCBCF13S7SC021396
SCBBR6ZG8SC022558	SCBCF13S1SC022480	SCBCF13S7SC022578
SCBBR6ZG8SC022723	SCBCF13S1SC022527	SCBCF13S7SC022614
SCBBR6ZG9SC021399	SCBCF13S1SC022530	SCBCF13S7SC022743
SCBBR6ZG9SC021421	SCBCF13S1SC022544	SCBCF13S8SC021259
SCBBR6ZG9SC021466	SCBCF13S1SC022561	SCBCF13S8SC021262
SCBBR6ZG9SC021483	SCBCF13S1SC022673	SCBCF13S8SC022461
SCBBR6ZG9SC022438	SCBCF13S2SC021709	SCBCF13S8SC022654
SCBBR6ZG9SC022455	SCBCF13S2SC022536	SCBCF13S8SC022718
SCBBR6ZG9SC022620	SCBCF13S2SC022780	SCBCF13S9SC021691
SCBBR6ZGXSC021217	SCBCF13S3SC021296	SCBCF13S9SC022503
SCBBR6ZGXSC021234	SCBCF13S3SC021332	SCBCF13S9SC022548
SCBBR6ZGXSC021492	SCBCF13S3SC021704	SCBCF13S9SC022565
SCBBR6ZGXSC021590	SCBCF13S4SC021274	SCBCF13S9SC022694
SCBBR6ZGXSC022464	SCBCF13S4SC021470	SCBCF13SXSC021229
SCBBR6ZGXSC022514	SCBCF13S4SC021551	SCBCF13SXSC022557
SCBBR6ZGXSC022562	SCBCF13S4SC021565	SCBCF13SXSC022591
SCBBR6ZGXSC022609	SCBCF13S4SC021646	SCBCF13SXSC022610
SCBCF13S0SC021255	SCBCF13S4SC022487	SCBCF1ZG5SC021688
SCBCF13S0SC021546	SCBCF13S4SC022666	SCBCF1ZG7SC022602
SCBCF13S0SC021692	SCBCF13S5SC021249	SCBCF1ZG8SC021457
SCBCF13S0SC022471	SCBCF13S5SC021347	SCBCF1ZG9SC022634
SCBCF13S0SC022521	SCBCF13S5SC021381	SCBCF1ZG9SC022665

SCBCF1ZGXSC021458	SCBCJ13S7SC021316	SCBCR2ZG0SC022616
SCBCG13S0SC022645	SCBCJ13S8SC021292	SCBCR2ZG0SC022650
SCBCG13S1SC021309	SCBCJ13S8SC021308	SCBCR2ZG0SC022793
SCBCG13S1SC021312	SCBCJ13S8SC021339	SCBCR2ZG1SC021250
SCBCG13S1SC022573	SCBCJ13S8SC021390	SCBCR2ZG1SC021300
SCBCG13S2SC021268	SCBCJ13S9SC021236	SCBCR2ZG1SC022625
SCBCG13S2SC021285	SCBCJ13SXSC021245	SCBCR2ZG2SC021242
SCBCG13S2SC021562	SCBCJ1ZG9SC021353	SCBCR2ZG2SC021256
SCBCG13S4SC022583	SCBCL13S0SC022687	SCBCR2ZG2SC021550
SCBCG13S5SC021393	SCBCL13S0SC022737	SCBCR2ZG2SC022519
SCBCG13S8SC021324	SCBCL13S1SC022794	SCBCR2ZG2SC022570
SCBCG13S8SC021386	SCBCL13S2SC022691	SCBCR2ZG3SC021279
SCBCG13S8SC021467	SCBCL13S3SC022800	SCBCR2ZG3SC021282
SCBCG13S8SC022490	SCBCL13S4SC022790	SCBCR2ZG3SC021377
SCBCG13S9SC021350	SCBCL13S7SC022735	SCBCR2ZG3SC021556
SCBCG13S9SC021400	SCBCL13S8SC022713	SCBCR2ZG3SC022593
SCBCG13SXSC021356	SCBCL13S8SC022727	SCBCR2ZG4SC022568
SCBCG13SXSC021373	SCBCL13SXSC022681	SCBCR2ZG4SC022733
SCBCG13SXSC021454	SCBCP2ZG3SC022678	SCBCR2ZG5SC022739
SCBCH13S0SC022772	SCBCP2ZG3SC022745	SCBCR2ZG6SC021440
SCBCH13S6SC021609	SCBCP2ZG9SC022684	SCBCR2ZG6SC021700
SCBCJ13S0SC021304	SCBCR13S2SC021247	SCBCR2ZG6SC022541
SCBCJ13S1SC021313	SCBCR13S2SC021278	SCBCR2ZG6SC022619
SCBCJ13S1SC021649	SCBCR13S4SC021363	SCBCR2ZG7SC021558
SCBCJ13S2SC021336	SCBCR13S4SC022545	SCBCR2ZG7SC022550
SCBCJ13S3SC021233	SCBCR13S9SC022508	SCBCR2ZG7SC022659
SCBCJ13S3SC021331	SCBCR13SXSC021383	SCBCR2ZG7SC022709
SCBCJ13S4SC021239	SCBCR2ZG0SC021367	SCBCR2ZG8SC021360
SCBCJ13S4SC021340	SCBCR2ZG0SC021370	SCBCR2ZG8SC022458
SCBCJ13S4SC021452	SCBCR2ZG0SC021644	SCBCR2ZG8SC022475
SCBCJ13S6SC022506	SCBCR2ZG0SC022566	SCBCR2ZG8SC022637

SCBCR2ZG9SC021707	SCBDF33S6SC021342	SCBDR33S1SC022776
SCBCR2ZG9SC022484	SCBDF33S6SC021549	SCBDR4ZG0SC021384
SCBCR2ZGXSC021344	SCBDF33S6SC022555	SCBDR4ZG0SC021689
SCBCR2ZGXSC022641	SCBDF33S7SC021298	SCBDR4ZG1SC021314
SCBCR2ZGXSC022798	SCBDF33S7SC021365	SCBDR4ZG1SC021345
SCBDF33S0SC021238	SCBDF33S8SC021276	SCBDR4ZG1SC021362
SCBDF33S0SC021272	SCBDF33S8SC021438	SCBDR4ZG1SC021412
SCBDF33S0SC021322	SCBDF33S8SC021567	SCBDR4ZG1SC022656
SCBDF33S0SC021398	SCBDF33S8SC021701	SCBDR4ZG2SC021287
SCBDF33S0SC022647	SCBDF33S8SC022489	SCBDR4ZG2SC021371
SCBDF33S0SC022714	SCBDF33S8SC022525	SCBDR4ZG2SC021547
SCBDF33S0SC022731	SCBDF33S8SC022797	SCBDR4ZG2SC021693
SCBDF33S1SC022589	SCBDF33S9SC021240	SCBDR4ZG2SC022567
SCBDF33S1SC022592	SCBDF33S9SC021318	SCBDR4ZG2SC022617
SCBDF33S2SC021306	SCBDF33S9SC021352	SCBDR4ZG3SC021248
SCBDF33S2SC021368	SCBDF33S9SC022582	SCBDR4ZG3SC022500
SCBDF33S2SC021564	SCBDF33SXSC021280	SCBDR4ZG3SC022612
SCBDF33S2SC022469	SCBDF33SXSC021358	SCBDR4ZG3SC022724
SCBDF33S2SC022486	SCBDF33SXSC021392	SCBDR4ZG4SC021243
SCBDF33S3SC021699	SCBDF33SXSC021604	SCBDR4ZG4SC021260
SCBDF33S3SC022478	SCBDF3ZG3SC022595	SCBDR4ZG4SC021310
SCBDF33S3SC022559	SCBDG33S3SC022624	SCBDR4ZG4SC021338
SCBDF33S3SC022643	SCBDG33S7SC021394	SCBDR4ZG4SC021355
SCBDF33S4SC021291	SCBDL33S3SC022716	SCBDR4ZG4SC022652
SCBDF33S4SC022473	SCBDL33S5SC022779	SCBDR4ZG4SC022747
SCBDF33S4SC022621	SCBDL33S6SC022788	SCBDR4ZG5SC021266
SCBDF33S4SC022635	SCBDL33S6SC022791	SCBDR4ZG5SC021283
SCBDF33S5SC021235	SCBDP4ZG0SC022802	SCBDR4ZG5SC021302
SCBDF33S5SC021252	SCBDP4ZG1SC022677	SCBDR4ZG5SC021560
SCBDF33S5SC022546	SCBDP4ZG6SC022738	SCBDR4ZG5SC021705
SCBDF33S5SC022563	SCBDP4ZG9SC022782	SCBDR4ZG5SC022126

SCBDR4ZG5SC022482
SCBDR4ZG5SC022577
SCBDR4ZG6SC021258
SCBDR4ZG6SC021468
SCBDR4ZG6SC021471
SCBDR4ZG6SC021633
SCBDR4ZG6SC021647
SCBDR4ZG7SC021270
SCBDR4ZG7SC021334
SCBDR4ZG7SC021348
SCBDR4ZG7SC021379
SCBDR4ZG7SC021544
SCBDR4ZG7SC022502
SCBDR4ZG7SC022662
SCBDR4ZG8SC021228
SCBDR4ZG8SC021231
SCBDR4ZG8SC021326
SCBDR4ZG8SC021388
SCBDR4ZG8SC021651
SCBDR4ZG9SC021254
SCBDR4ZG9SC021450
SCBDR4ZG9SC022579
SCBDR4ZGXSC021246
SCBDR4ZGXSC021294
SCBDR4ZGXSC021330
SCBDR4ZGXSC021375
SCBDR4ZGXSC022459
SCBDR4ZGXSC022462