

## Field campaign

<b>Topic</b>	Software Update   Window Short Drop Deletion   Continental GT/GTC   26MY (SC25 /31)
<b>Market area</b>	Bentley: worldwide (2WBE),China 796 VW Import Comp. Ltd (Vico), Beijing (6796)
<b>Brand</b>	Bentley
<b>Transaction No.</b>	2078277/5
<b>Campaign number</b>	ED59
<b>Note</b>	
<b>Type</b>	
<b>US code</b>	

## Vehicle data

### 26MY Continental GT / GTC

#### Sales types

Type	MY	Brand	Designation	Engine code	Gearbox code	Final drive code
Z23*	2026	E		*	*	*
Z24*	2026	E		*	*	*

## Documents

<b>Document name</b>
<a href="#">master.xml</a>
<a href="#">gt_glass_set_measurement_sheet.pdf</a>
<a href="#">gtc_glass_set_measurement_sheet.pdf</a>
<a href="#">v5sc2531vinlist.pdf</a>

ED59

Transaction No.: 2078277  
/5

Software Update | Window Short Drop Deletion | Continental GT/GTC | 26MY  
(SC25/31)

Release date: Aug 21,  
2025

## Notes

▼ **Repair instructions**

## Technical background

### CAUTION

Please refer to all of the instructions within the Work section. The instructions MUST be followed in the exact order as detailed

## Remedy

All instructions within the Work section must be conducted as detailed

Software update is available for the left and right hand rear door control modules - Diagnostic address 00BB Driver side and 00BC Passenger side

The software eliminates the rear window short drop function

## Customer notification

Please ensure the software instructions within the Service campaign must be conducted at the nearest opportunity

## Warranty

Warranty type	710 or 790
Damage service number	ED59
Damage code	00 66
Criterion ID	01

### Time to conduct the Software Version Management (SVM) update - Rear door control modules

Labour operation code	01 51 00 00
Time	As per ODIS log Must not exceed 50 TU

### Time to conduct initial measurement checks Profile (Y-Axis) and Interlock (X-Axis)

Labour operation code	64 38 02 00
Time	30 TU

### CAUTION

The labour codes below must only be claimed if the Profile (Y-Axis) and Interlock (X-Axis) were out of specification (before and / or after the software update was conducted)

### Time to conduct the front glass adjustment procedure

Labour operation code 64 40 15 00

Time 140 TU (per side)

### Time to conduct the rear glass adjustment procedure

Labour operation code 64 75 15 00

Time 170 TU (per side)

### Water leak test

Labour operation code 64 38 01 99 (Use this code when conducting the water leak test)

Time 20 TU

### Additional Time Allowance

A 100TU allowance may be claimed only if a SVM update fails to complete successfully. This is intended to cover additional diagnostic or recovery work directly resulting from the failed update. It must not be used for unrelated delays or issues.

ODIS logs must be attached to a DISS ticket for evidence of failure. Claims without valid documentation will be rejected. Warranty Adjudicators will review associated ODIS logs and DISS queries to determine actual software update time.

## Parts

Not applicable

## Parts supply

### NOTICE

Should one or both of the measurements not be within specification the operative must refer to Rep.Gr 64 - Rear door drop glass - To adjust and conduct the front and rear glass adjustment procedure for the affected side left and / or right hand side to completion (all steps)

### NOTICE

Adjustment of all side glass requires the interior trim to be removed. Refer to "Rear quarter trim – To remove and fit". Rep. Gr. 70



To carry out the "Rear quarter trim – To remove and fit". Rep. Gr. 70 procedure, the following one-time-use parts must be replaced during the reinstallation:

N 989 244 01 x4 (Front seat belt slider bar fixing x2 each side)

N 989 244 01 x2 (Rear seat belt fixing x1 each side)

Refer to ETKA parts catalogue

## Parts despatch control

Not applicable

---

## Technical background

### CAUTION

Please refer to all of the instructions within the Work section. The instructions MUST be followed in the exact order as detailed

## Check

If the vehicle is not already listed as repaired in "Repair history" (in Elsa pro), check for the presence of the blue paint completion mark as shown within the Identification section

If neither are evident please conduct the instructions within the Work section to completion.

## Parts

Not applicable

## Work

### CAUTION

Ensure the vehicle is connected to a suitable 12V Lithium Ion battery charger before conducting any work

## Section 1 – Initial Glass Set Measurements

### NOTICE

Conduct initial glass set measurements and record the results in the model specific measurement document attached (see documents section). After completing the initial measurements, DO NOT make any adjustments until after the software update has been completed

### CAUTION

When completing the initial glass set measurements strictly adhere to the instructions in section 2



When completing measurements on Continental GTC models, complete a set of measurements with both the roof up and the roof down, as per the attached glass set measurement sheet

## Section 2 – Glass Set Measurement Instructions

### CAUTION

When completing the glass set measurement procedure, strictly adhere to the instructions below

If unsure about the measurement process follow the video on eAcademy or raise a full technical DISS query.

To eliminate confusion about the usage of WT10549/3 and the Y axis profile measurement between the front and rear windows and how to correctly read/enter the measurements in the tables, please refer to the below images to aid with accurate reading of the Y axis profile when using WT10549/3.

## Window Parallel

When the window is parallel take the 2mm step from the tool and minus the 2mm gap between front window and tool = -0mm (as shown in figure 1)

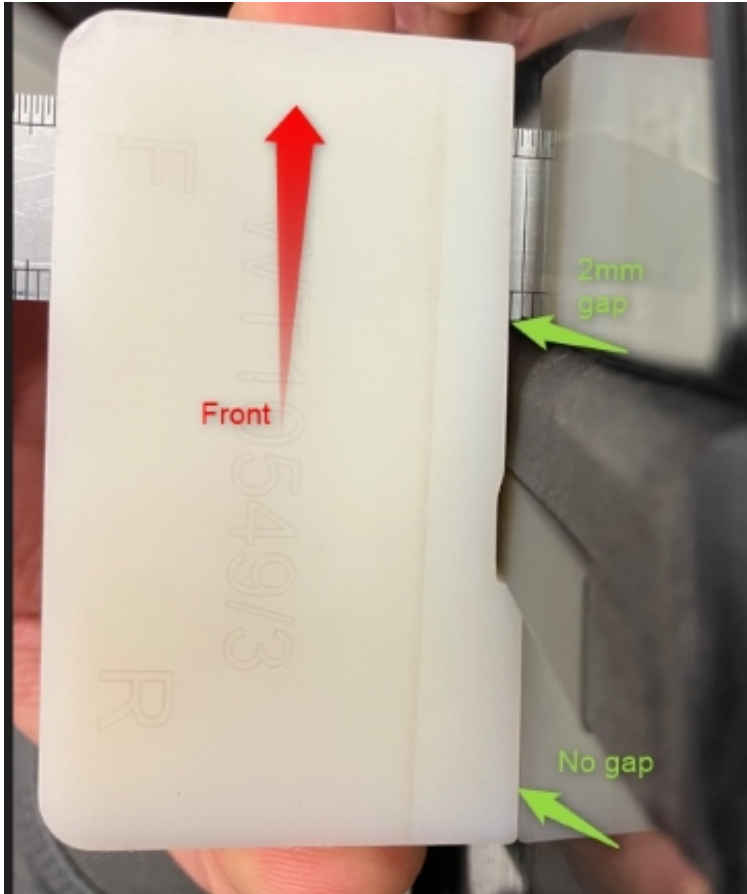


Figure 1

When the rear window is 0mm inboard from the front glass and the windows are parallel, the measurement written as 0mm (figure 2)

Profile (Y-Axis) Roof Down	Vehicle Position	Dimension -X-	Before adjustment
4 50mm from top of division bar	Front drop glass to rear quarter glass	+0 mm / - 2 mm	0mm

Figure 2

### Rear Window Inboard

When the rear window is inboard and there is a 2mm step from the tool, when there is no gap between either window and tool (figure 3), the recorded measurement should be -2mm (figure 4)

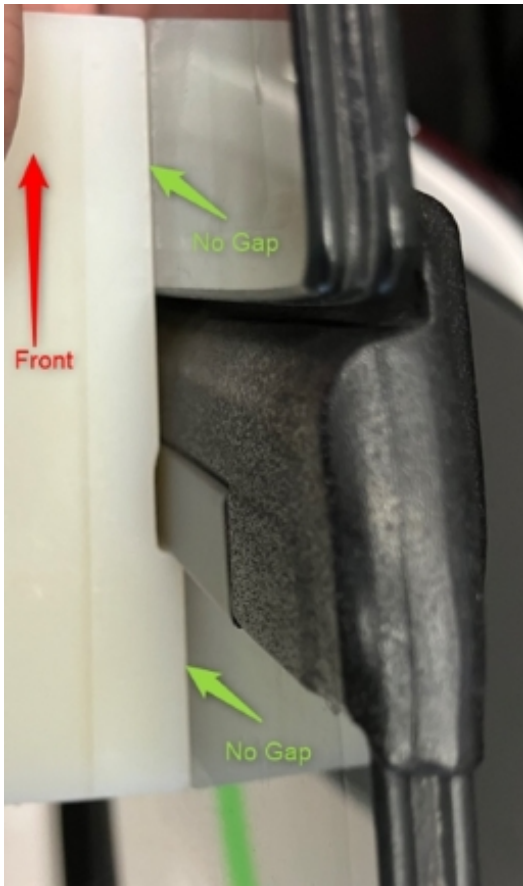


Figure 3

Profile (Y-Axis) Roof Down	Vehicle Position	Dimension -X-	Before adjustment
4 50mm from top of division bar	Front drop glass to rear quarter glass	+0 mm / - 2 mm	-2mm

Figure 4

**Rear Window Too Far Inboard**

When the rear window is inboard and there is a 2mm step from the tool as well as an additional 1.5mm gap to the window (figure 5), the recorded measurement should be -3.5mm (figure 6).

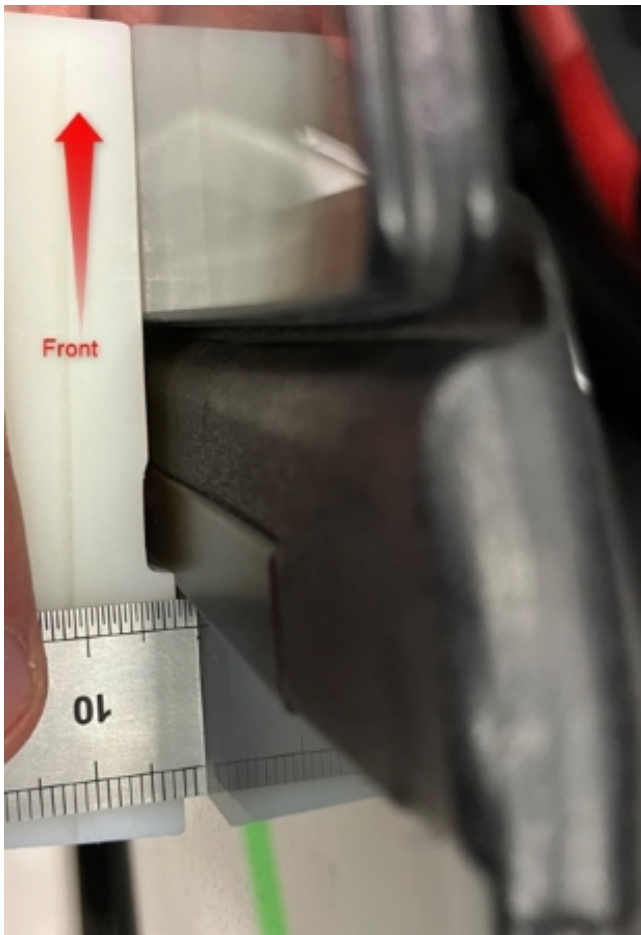


Figure 5

Profile (Y-Axis) Roof Down	Vehicle Position	Dimension -X-	Before adjustment
4 50mm from top of division bar	Front drop glass to rear quarter glass	+0 mm / - 2 mm	-3.5mm

Figure 6

If the tool (WT10549/3) does not sit flush against the rear window then this shows rear window is more than 2mm inboard (more than -2mm), check this by holding the tool on the front window and measuring gap between the rear glass and the tool (as shown in figure 7)



Figure 7

Further explanation can be found in the videos shown in Figure 8, which can be found on eAcademy Digital Learning Hub.

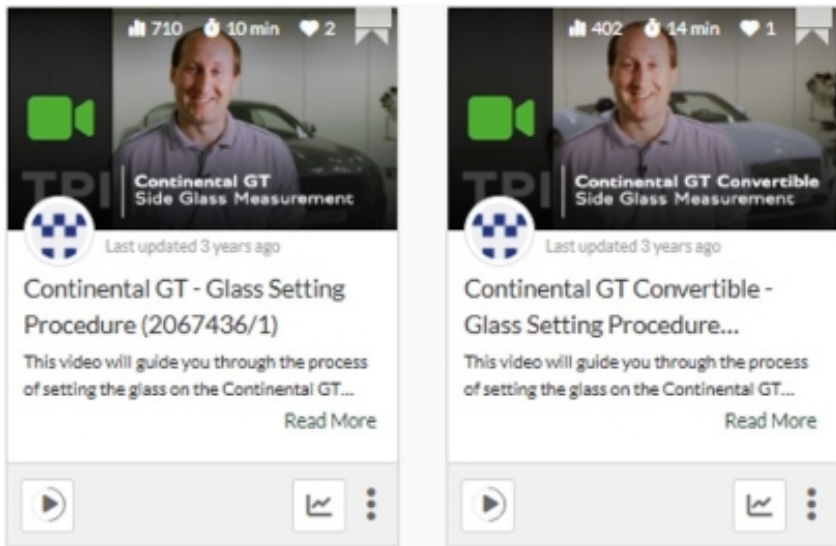


Figure 8

### Section 3 - Software update to the rear door control modules 00BB and 00BC - Short drop function elimination

**CAUTION**

**ONLY** Chargers that meet the approved specification on the Mandatory Equipment List (available on the Bentley Hub) **MUST** be used.

- The charger must be set to a mode where a **MINIMUM** of 90a is supplied to the battery during the process. Typically, this is known as 'Power Supply Mode' or 'DIAG+ Mode'.
- A voltage of exactly 14.8v must be set and maintained throughout the process.
- Please refer to the manual to ensure that these requirements are met before beginning any SVM update



The following software update eliminates the rear window short drop function

1) Preparation before update

- Conduct a full guided fault find of the vehicle.



If a 'Check installation list' pop-up appears, select 'close' (Figure 9)

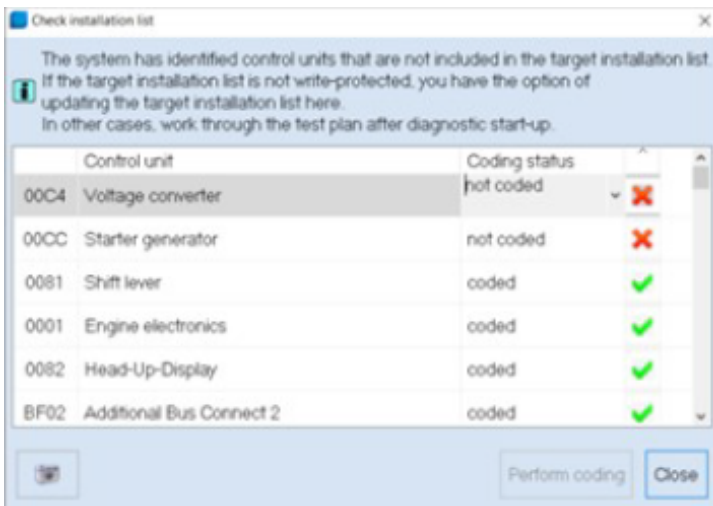


Figure 9

Referring to TPI 2075920, address any unknown faults **BEFORE** conducting any of the below updates.

2) Referring to Figure 10 - Within the Special functions tab - Select SVM - Code Input (Point A)

• Select Perform test (Point B)

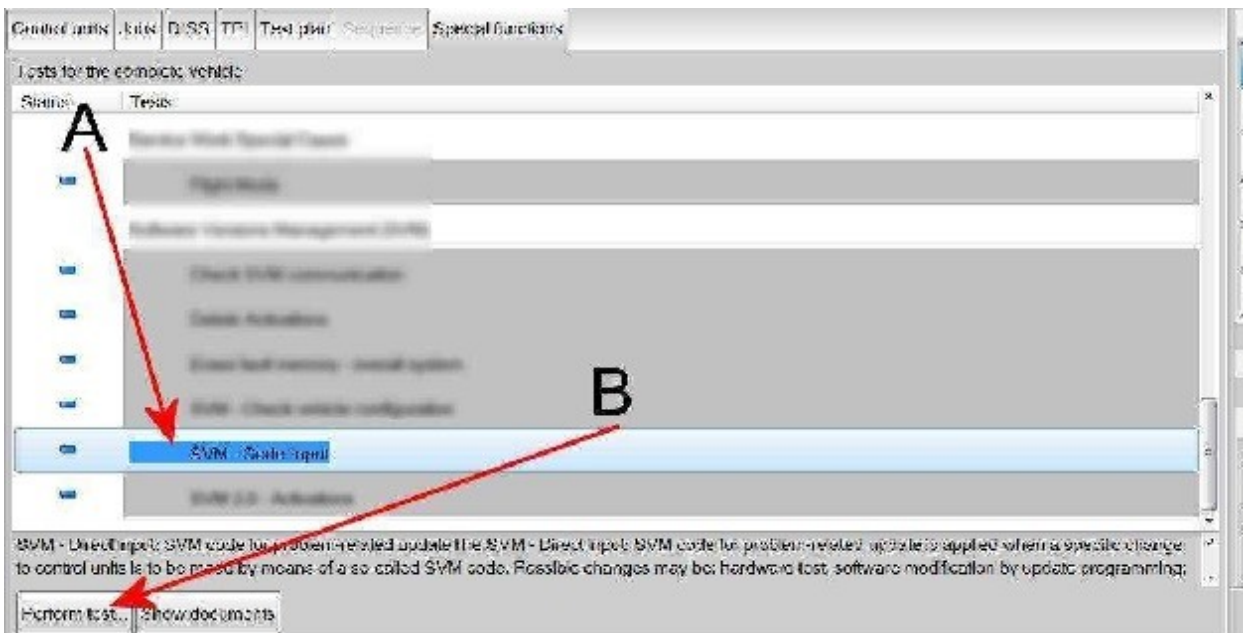


Figure 10

3) Referring to Figure 11 - Enter the SVM code **372WDD02**

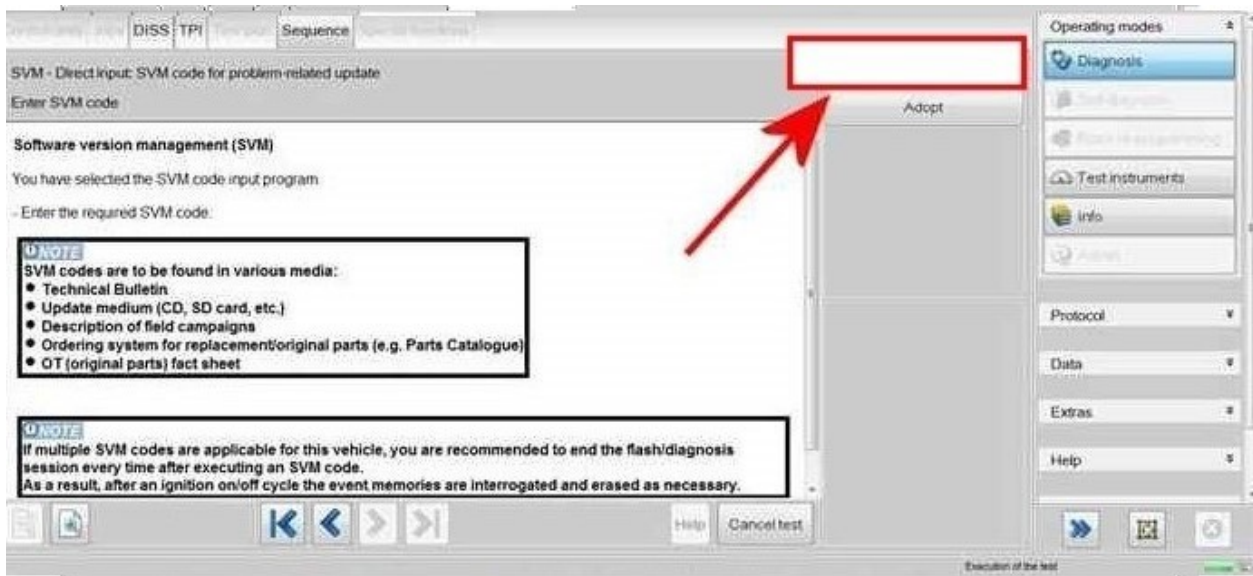


Figure 11

4) The control modules will automatically be updated one by one, starting with 00BB (Driver rear) and then 00BC (passenger rear)



Upon successful completion you will get a failure message of 8113 SVM Error



**NOTICE**

If you get any other error code, such as 8118, please raise a full technical DISS query with the log submitted online

5) On completion open the doors and ensure that the rear windows no longer drop.

6) Switch off the ignition

- Remove the diagnostic interface from the OBD port
- Switch off and remove the battery charger from the vehicle
- Close the bonnet, boot and all doors
- Lock the vehicle
- Wait 5 minutes to allow the vehicle to go into bus silence
- When 5 minutes has elapsed, unlock the vehicle and open the driver's door
- Switch on the ignition

7) Once the software update has been conducted continue with the remaining instructions

**Hint:** The remaining instructions MUST be conducted regardless if adjustments were conducted or not

8) Referring to Rep.Gr 64 - Measure and record the points as detailed below on the left and right hand side Profile (Y-Axis) and Interlock (X-Axis).



**CAUTION**

Strictly adhere to the instructions in section 2 when completing the glass set measurements after the software update has been completed.

Note: Should the measurements for the left and right hand side be within specification please go to step 11 and follow all remaining steps until completion

Or

 NOTICE

Should one or both of the measurements not be within specification the operative must refer to Rep.Gr 64 - Rear door drop glass - To adjust and conduct the front and rear glass adjustment procedure for the affected side left and / or right hand side to completion (all steps) and record a final measurement in the attached document

 CAUTION

All measurements must be recorded in the attached measurement documentation and saved as they will be required to be attached to a non-technical DISS query at the end of the procedure



**FAILURE TO ATTACH THE MEASUREMENTS TO THE DISS WILL RESULT IN NON PAYMENT OF THE WARRANTY CLAIM**

Note: Once the adjustment has been conducted please go to step 10 and follow all remaining steps until completion

9) VERY IMPORTANT - Referring to Rep.Gr 64 - Side glass - To initialise

 CAUTION

When conducting step 11 extra care must be taken to ensure the interior trim is suitably protected, any water which enters the vehicle due to a leak must be dried / cleaned immediately. Ensure all windows, sunroof and convertible roof (where applicable) are fully closed before conducting step 11

10) Conduct a water leak check to ensure that water is not leaking into the vehicles interior - Water leaks must be resolved before handing over the vehicle to the customer

11) Conduct the PDI road test to check for any wind noise related issues

 NOTICE

Should the vehicle fail the water leak check or a wind noise check, please raise a full technical DISS query

12) Upon successful completion of the PDI road test, raise a non-technical DISS query titled SC25/30 X and Y Axis measurement feedback ensuring the following is attached

- Online ODIS log
- A completed model specific measurement table

13) Referring to the Identification section - Apply a blue paint completion mark on the engine partition brace (Figure 12)

## Identification

Blue paint completion mark on the engine partition brace



Figure 12

---

▲ Repair instructions ▲ Notes

Side glass measurements GT 25MY for Campaign ED18					
Interlock (Z-Axis)	Vehicle Position	Dimension -X-	Before SVM	After SVM	After adjustment (if required)
A 50 mm from division bar	Front quarter glass	7.5 mm ± 1 mm			
B 150 mm from division bar	Front of door drop glass	8 mm ± 1 mm			
C 50 mm from rear of door drop glass	Rear of door drop glass	8 mm ± 1 mm			
D 50 mm from rear drop glass division bar	Front of rear quarter glass	8 mm ± 1 mm			
E 50 mm from rearmost section of rear drop glass	Rear of rear quarter glass	8 mm ± 1 mm			
Interlock (X-Axis)	Vehicle Position	Dimension -X-	Before SVM	After SVM	After adjustment (if required)
4 50 mm from the top of the window	Rear door quarter glass strip to front door drop glass edge	11 mm ± 1 mm			
5 50 mm from the waistrail seal	Rear door quarter glass strip to front door drop glass edge	11 mm ± 1 mm			
Profile (Y-Axis)	Vehicle Position	Dimension -X-	Before SVM	After SVM	After adjustment (if required)
1 50 mm from division bar	Front quarter glass	10 mm ± 1 mm			
2 150 mm from division bar	Front of door drop glass	10 mm ± 2 mm			
3 50 mm from rear of door drop glass	Rear of door drop glass	10 mm ± 2 mm			
6 50 mm from rear drop glass division bar	Front of rear quarter glass	10 mm ± 2 mm			
7 50 mm from rearmost section of rear drop glass	Rear of rear quarter glass	10 mm ± 2 mm			
8 50mm forwards of rear of front drop glass (waist rail gap)	Rear of door drop glass	5mm ± 1mm			
9 50mm rearward of front of rear drop glass (waist rail gap)	Front of rear quarter glass	5mm ± 1mm			
Profile (Y-Axis)	Vehicle Position	Dimension -X-	Before SVM	After SVM	After adjustment (if required)
4 50mm from top of division bar	Front drop glass to rear quarter glass	+0 mm / - 2.5 mm			
5 50mm from bottom of division bar	Front drop glass to rear quarter glass	+0 mm / - 2 mm			

<b>Side glass measurements GTC 25MY for Campaign ED18</b>					
<b>Interlock (Z-Axis)</b>	<b>Vehicle Position</b>	<b>Dimension -X-</b>	<b>Before SVM</b>	<b>After SVM</b>	<b>After adjustment (if required)</b>
1 50 mm from division bar	Front quarter glass	7.5 mm ± 1 mm			
2 100 mm from division bar	Front of door drop glass	8.5 mm ± 1 mm			
3 50 mm from rear of door drop glass	Rear of door drop glass	8.5 mm ± 1 mm			
6 50 mm from rear drop glass division bar	Front of rear quarter glass	8.5 mm ± 1 mm			
7 100 mm from where the hood meets the brightware	Rear of rear quarter glass	10 — 16mm			
<b>Interlock (X-Axis) Roof Up</b>	<b>Vehicle Position</b>	<b>Dimension -X-</b>	<b>Before SVM</b>	<b>After SVM</b>	<b>After adjustment (if required)</b>
4 50 mm from the top of the window	Rear door quarter glass strip to front door drop glass edge	11 mm ± 1 mm			
5 50 mm from the waistrail seal	Rear door quarter glass strip to front door drop glass edge	11 mm ± 1 mm			
<b>Interlock (X-Axis) Roof Down</b>	<b>Vehicle Position</b>	<b>Dimension -X-</b>	<b>Before SVM</b>	<b>After SVM</b>	<b>After adjustment (if required)</b>
4 50 mm from the top of the window	Rear door quarter glass strip to front door drop glass edge	11 mm ± 1 mm			
5 50 mm from the waistrail seal	Rear door quarter glass strip to front door drop glass edge	11 mm ± 1 mm			
<b>Profile (Y-Axis)</b>	<b>Vehicle Position</b>	<b>Dimension -X-</b>	<b>Before SVM</b>	<b>After SVM</b>	<b>After adjustment (if required)</b>
1 50 mm from division bar	Front quarter glass	10 mm ± 1 mm			
2 100 mm from division bar	Front of door drop glass	14 mm ± 2 mm			
8 50mm forwards of rear of front drop glass (waist rail gap)	Rear of door drop glass	5mm ± 1mm			
9 50mm rearward of front of rear drop glass (waist rail gap)	Front of rear quarter glass	5mm ± 1mm			
<b>Profile (Y-Axis) Roof Up</b>	<b>Vehicle Position</b>	<b>Dimension -X-</b>	<b>Before SVM</b>	<b>After SVM</b>	<b>After adjustment (if required)</b>
4 50mm from top of division bar	Front drop glass to rear quarter glass	+0 mm / - 2.5 mm			
5 50mm from bottom of division bar	Front drop glass to rear quarter glass	+0 mm / - 2 mm			
<b>Profile (Y-Axis) Roof Down</b>	<b>Vehicle Position</b>	<b>Dimension -X-</b>	<b>Before SVM</b>	<b>After SVM</b>	<b>After adjustment (if required)</b>
4 50mm from top of division bar	Front drop glass to rear quarter glass	+0 mm / - 2.5 mm			
5 50mm from bottom of division bar	Front drop glass to rear quarter glass	+0 mm / - 2 mm			

SCBCM13S9TC025196	SCBCN13S0TC025181	SCBCP2ZG3TC025159
SCBCN13S1TC025125	SCBCN13S1TC025173	SCBCR2ZG6TC025053
SCBCN13S3TC024896	SCBCN13S4TC025006	SCBCU13SXTTC025157
SCBCP2ZG0TC024843	SCBCN13S5TC024477	SCBDN33S0TC025021
SCBCR2ZG9TC025208	SCBCN13SXTTC025138	SCBDN33S1TC025058
SCBCU13S6TC025012	SCBCN13SXTTC025155	SCBDP4ZG0TC025037
SCBDM33S1TC025189	SCBCP2ZG9TC025148	SCBDP4ZG2TC025122
SCBDM33S3TC025226	SCBCP2ZGXTTC025143	SCBDP4ZG3TC025095
SCBCB13SXTTC025245	SCBDB33SXTTC024581	SCBDR4ZG0TC025131
SCBCM13S1TC025192	SCBDM33S2TC025153	SCBDR4ZG1TC025137
SCBCM13S4TC025199	SCBDM33S8TC025013	SCBDR4ZG4TC025049
SCBCM13S4TC025204	SCBDN33S4TC024986	SCBCB13S4TC025001
SCBCM13S4TC025221	SCBDN33S9TC025194	SCBCB13S7TC025090
SCBCM13S9TC025120	SCBDP4ZG0TC025197	SCBCB13S8TC024952
SCBCN13S1TC025240	SCBDP4ZG6TC025186	SCBCJ13S1TC024858
SCBCP2ZG2TC025184	SCBDR4ZG7TC024784	SCBCM13S3TC024870
SCBCP2ZG8TC024881	SCBCB13S3TC025135	SCBCM13S7TC025097
SCBCP2ZG9TC025232	SCBCB13S4TC025144	SCBCM1ZG8TC024575
SCBDM33S9TC025182	SCBCB13S8TC024983	SCBCN13S0TC024760
SCBDM33SXTTC024946	SCBCD13S8TC023908	SCBCN13S3TC025126
SCBDN33S0TC025214	SCBCM13S2TC025086	SCBCN13S5TC024916
SCBDN33S2TC025179	SCBCM13S3TC025162	SCBCN13S7TC025081
SCBDP4ZG5TC025065	SCBCM13S7TC024824	SCBCN13S8TC024960
SCBDP4ZG7TC025052	SCBCM13S7TC025083	SCBCN13S9TC024921
SCBDP4ZG7TC025147	SCBCM13S7TC025116	SCBCP2ZG2TC025119
SCBCB13SXTTC025133	SCBCM13S9TC025103	SCBCP2ZG6TC025043
SCBCD13S6TC024944	SCBCM13SXTTC025076	SCBCP2ZG9TC025036
SCBCM13S2TC025167	SCBCN13S7TC025128	SCBCR2ZG9TC025113
SCBCM13S4TC025171	SCBCN13SXTTC025088	SCBDB33S5TC024763
SCBCM13S9TC025165	SCBCN1ZG9TC025070	SCBDG33S1TC024938
SCBCN13S0TC024967	SCBCP2ZG1TC025175	SCBDJ33SXTTC025085

SCBDM33S0TC025099	SCBCM13SXTTC025028	SCBCM13S8TC024914
SCBDM33S4TC024893	SCBCM1ZG2TC024992	SCBCM13S9TC024954
SCBDM33S6TC024958	SCBCM1ZG4TC024797	SCBCM13S9TC025019
SCBDN33S2TC024968	SCBCN13S1TC024573	SCBCM1ZG7TC024700
SCBDN33S4TC024759	SCBCN13S2TC024985	SCBCN13S2TC024999
SCBDN33S9TC024840	SCBCN13S3TC025045	SCBCN13S2TC025022
SCBDP4ZG0TC025068	SCBCN13S6TC024617	SCBCN13S5TC024981
SCBDP4ZG0TC025071	SCBCN13SXTTC025026	SCBCP2ZG2TC024861
SCBDP4ZG0TC025118	SCBCP2ZG5TC025048	SCBCP2ZG8TC024931
SCBDP4ZG1TC025046	SCBCP2ZG6TC024703	SCBCR13SXTTC025015
SCBDP4ZG2TC025041	SCBCP2ZG7TC025035	SCBCR2ZG0TC024934
SCBDR4ZG9TC025077	SCBCP2ZG9TC024307	SCBCR2ZG7TC024929
SCBDR4ZG9TC025080	SCBCR2ZG1TC025042	SCBCR2ZGXTTC024326
SCBCP2ZG5TC025101	SCBCR2ZG3TC025057	SCBCU13S8TC024587
SCBCP2ZG1TC025063	SCBDB33S5TC024889	SCBDM33S5TC024790
SCBCP2ZG4TC025073	SCBDM33S0TC024115	SCBDM33S6TC024975
SCBDM33S1TC025029	SCBDM33S3TC025002	SCBDN33S3TC024994
SCBDM33S4TC025025	SCBDM33S6TC024829	SCBDN33S6TC024990
SCBDP4ZG6TC025074	SCBDM33S6TC025009	SCBDP4ZG3TC024755
SCBCB13S5TC025024	SCBDM33S7TC024998	SCBDR4ZG2TC024885
SCBCB13S6TC025016	SCBDP4ZG2TC025055	SCBDR4ZG4TC024032
SCBCB13S8TC024966	SCBDP4ZG8TC024928	SCBCB13S0TC024878
SCBCB13SXTTC024919	SCBDR4ZG4TC024192	SCBCB13S2TC024963
SCBCB13SXTTC024970	SCBCB13S6TC024948	SCBCB13S7TC024912
SCBCJ1ZG0TC024370	SCBCB13S8TC024918	SCBCB13S7TC025008
SCBCM13S3TC024979	SCBCB13S8TC025020	SCBCM13S0TC024874
SCBCM13S3TC024996	SCBCM13S1TC024883	SCBCM13S0TC024924
SCBCM13S5TC024465	SCBCM13S2TC025010	SCBCM13S2TC024908
SCBCM13S6TC025060	SCBCM13S3TC024965	SCBCM13S2TC024942
SCBCM13S7TC024936	SCBCM13S5TC025003	SCBCM13S4TC024974
SCBCM13S9TC025005	SCBCM13S7TC025004	SCBCM13S5TC024904

SCBCM13S6TC024961	SCBCU13S9TC024842	SCBDP4ZG5TC024854
SCBCN13S4TC024972	SCBDM33S8TC024251	SCBDP4ZGXTC024834
SCBCN13S5TC024821	SCBDP4ZG8TC024850	SCBCB13S0TC024816
SCBCN13S6TC024844	SCBDR4ZG8TC024860	SCBCB13S2TC024476
SCBCN13S8TC024876	SCBCB13S1TC024856	SCBCB13S4TC024835
SCBCU13S0TC024969	SCBCB13S3TC024728	SCBCB13S5TC024830
SCBCU13S1TC024902	SCBCB13SXTC024757	SCBCB13S8TC024837
SCBCU13S8TC024766	SCBCD13S3TC024318	SCBCM13S0TC024714
SCBDM33S8TC024864	SCBCM13S0TC024390	SCBCM13S1TC024687
SCBDN33S4TC024910	SCBCM13S5TC024871	SCBCM13S4TC024747
SCBCB13S0TC024900	SCBCM13S7TC024788	SCBCM13S9TC024825
SCBCB13S1TC024940	SCBCM1ZG4TC024735	SCBCM13S9TC024839
SCBCB13S5TC024682	SCBCM1ZG5TC024629	SCBCM13SXTC024722
SCBCM13S5TC024739	SCBCN13S0TC024709	SCBCM1ZG2TC024832
SCBCM13S6TC024698	SCBCN13S0TC024743	SCBCM1ZG5TC024503
SCBCM13S6TC024894	SCBCN13S6TC024827	SCBCM1ZG5TC024677
SCBCM1ZG4TC024637	SCBCN13SXTC024684	SCBCM1ZGXTC024819
SCBCM1ZG7TC024695	SCBCN1ZG5TC024658	SCBCN13S1TC024623
SCBCM1ZG8TC024852	SCBCP2ZG1TC024799	SCBCN13S4TC024163
SCBCN13S5TC024866	SCBCR2ZG3TC024846	SCBCN13SXTC024376
SCBCN13S6TC024956	SCBCR2ZG4TC024855	SCBCP2ZG4TC024716
SCBCN13S7TC024898	SCBCR2ZG9TC024673	SCBCP2ZG7TC024791
SCBDM33S1TC024334	SCBCU13S9TC024811	SCBCR2ZG2TC024305
SCBDM33S4TC024456	SCBDB33S8TC024868	SCBDM33S0TC024745
SCBDN33S0TC024872	SCBDP4ZG1TC024818	SCBDM33S4TC024621
SCBDN33S8TC024635	SCBDP4ZG2TC024794	SCBDN33S5TC024740
SCBDR4ZG3TC024121	SCBDP4ZG3TC024769	SCBDP4ZG4TC024814
SCBCB13S2TC024848	SCBDP4ZG4TC024697	SCBCB13S4TC024804
SCBCM13S0TC024891	SCBDP4ZG4TC024778	SCBCB13S6TC024786
SCBCR13S5TC024807	SCBDP4ZG4TC024845	SCBCB13S9TC024779
SCBCR2ZG8TC024812	SCBDP4ZG5TC024806	SCBCM13S0TC024762

SCBCM13S0TC024793	SCBCM1ZGXTC024643	SCBDM3ZG8TC024480
SCBCM13S2TC024777	SCBCN13S0TC024659	SCBDP4ZGXTC024719
SCBCM1ZG2TC024751	SCBCN13S9TC024773	SCBDR33S0TC024715
SCBCM1ZG5TC024730	SCBCP2ZG8TC024301	SCBCB13S1TC024680
SCBCM1ZG7TC024809	SCBCR13S1TC024710	SCBCB13S4TC024625
SCBCN13S5TC024253	SCBCR13S8TC024669	SCBCM13S6TC024491
SCBCN13SXTTC024720	SCBCU13S6TC024782	SCBCM13S9TC024209
SCBCN1ZG0TC024583	SCBCU13SXTTC024655	SCBCM1ZG4TC024718
SCBCP2ZG1TC024771	SCBDM33S0TC024597	SCBCN13S5TC024706
SCBCU13S4TC024795	SCBDM33S1TC024639	SCBCN13S8TC024313
SCBCU13S6TC024801	SCBDM33S4TC024666	SCBCN13S8TC024599
SCBCU13S9TC024775	SCBDM3ZG9TC024679	SCBCR2ZG4TC024662
SCBDM33S0TC024602	SCBDN33S6TC024701	SCBCU13S0TC024616
SCBDM33S2TC024388	SCBDP4ZG4TC024473	SCBCU13S3TC024707
SCBDP4ZG1TC024012	SCBDP4ZG5TC024711	SCBCU13SXTTC024641
SCBDP4ZG6TC024507	SCBDP4ZG7TC024726	SCBDB33S6TC024321
SCBDP4ZG8TC024802	SCBDP4ZG8TC024749	SCBDM33S7TC024497
SCBDU33S2TC024732	SCBDU33S1TC024530	SCBDM33S9TC024565
SCBCD13S3TC024724	SCBCB13S2TC024526	SCBDM3ZG6TC024607
SCBCJ13S6TC024712	SCBCB13SXTTC024483	SCBDN33S9TC024627
SCBCM13S1TC024270	SCBCM13S3TC024187	SCBDN3ZG5TC024689
SCBCM13S1TC024768	SCBCM13S7TC024631	SCBDN3ZGXTTC024672
SCBCM13S5TC024675	SCBCM1ZG0TC024733	SCBDP4ZG9TC024615
SCBCM13S5TC024756	SCBCM1ZG2TC024510	SCBDR4ZG7TC024414
SCBCM13S6TC024653	SCBCP2ZG3TC024691	SCBDU33S1TC024656
SCBCM13SXTTC024753	SCBCP2ZG6TC024667	SCBDU33S4TC024554
SCBCM1ZG4TC024671	SCBCR2ZG0TC024741	SCBCB13S4TC024592
SCBCM1ZG4TC024704	SCBCR2ZG9TC024737	SCBCB13S8TC024322
SCBCM1ZG7TC024664	SCBDM33S1TC024611	SCBCM13S2TC024603
SCBCM1ZG8TC024608	SCBDM33S7TC024693	SCBCM13S5TC024563
SCBCM1ZGXTC024495	SCBDM33S8TC024685	SCBCM13S5TC024644

SCBCM1ZG2TC024541	SCBCP2ZGXTTC024543	SCBDN33S6TC024536
SCBCM1ZGXTTC024528	SCBCU13S2TC024620	SCBDN33SXTTC024569
SCBCM1ZGXTTC024562	SCBCU13S5TC024594	SCBDP4ZG4TC024487
SCBCN13S4TC024650	SCBCU13S9TC024601	SCBDP4ZG5TC024501
SCBCP2ZG0TC024633	SCBDM33S2TC024018	SCBDR4ZG4TC024550
SCBCU13S1TC024558	SCBDN3ZG9TC024534	SCBDR4ZGXTTC024522
SCBCU13S2TC024505	SCBDP4ZG6TC024572	SCBDU33S2TC024360
SCBCU13S4TC024571	SCBDP4ZG8TC024511	SCBCB13S4TC024463
SCBDM33S0TC024230	SCBCB13S1TC024579	SCBCG13S1TC024521
SCBDM33S1TC024124	SCBCB13S5TC024472	SCBCM13S0TC023983
SCBDM33S4TC024585	SCBCM13S5TC024532	SCBCM13S9TC024520
SCBDM33S9TC024548	SCBCM13S7TC024516	SCBCN13S0TC024404
SCBDN33S7TC024478	SCBCM1ZG3TC024533	SCBCN13S1TC024489
SCBDN33S7TC024660	SCBCN1ZG2TC024553	SCBCN13S9TC024515
SCBDP4ZG8TC024590	SCBCP2ZG0TC024311	SCBCN13SXTTC024474
SCBDP4ZG9TC024355	SCBDB33S3TC024258	SCBCR2ZG6TC024484
SCBDP4ZGXTTC024560	SCBDN33S6TC024570	SCBDM33S0TC024518
SCBDP4ZGXTTC024574	SCBDP4ZG4TC024540	SCBDM33S3TC023749
SCBDU33S2TC024648	SCBDR4ZGXTTC024567	SCBDM33S6TC024412
SCBCB13S4TC024589	SCBCM13S5TC024546	SCBDM33S8TC024363
SCBCB13S7TC024425	SCBCM13S6TC024538	SCBDN33S3TC024493
SCBCM13S5TC024613	SCBCM13SXTTC024512	SCBDN33S4TC024504
SCBCM13S7TC024595	SCBCN13S1TC024508	SCBDN33SXTTC024524
SCBCM1ZG2TC024605	SCBCN13S5TC024513	SCBDP4ZG0TC023966
SCBCM1ZG5TC024372	SCBCN13S9TC024353	SCBDP4ZG0TC024373
SCBCN13S0TC024628	SCBCP2ZG6TC024555	SCBDP4ZG1TC024429
SCBCN13S5TC023930	SCBCP2ZG9TC024551	SCBCB13S0TC024332
SCBCN13S8TC024568	SCBCR2ZG5TC024458	SCBCB13S1TC024467
SCBCN1ZG3TC024545	SCBCU13S0TC024499	SCBCB13S1TC024470
SCBCN1ZG4TC024604	SCBCU13S8TC024525	SCBCB13S5TC024455
SCBCP2ZG5TC024577	SCBCU13S8TC024556	SCBCB13S8TC024451

SCBCB13S9TC024460	SCBDN33S8TC024327	SCBDP4ZG9TC024422
SCBCM13S5TC024191	SCBDP4ZG0TC024437	SCBDR4ZG7TC024400
SCBCN13S7TC024481	SCBDP4ZG2TC024424	SCBCB13S2TC024364
SCBCN1ZG1TC024432	SCBDP4ZG5TC024000	SCBCJ1ZG7TC024351
SCBCR2ZG0TC024271	SCBDP4ZG7TC024449	SCBCM13S3TC024092
SCBCR2ZG6TC024453	SCBCB13S2TC024395	SCBCM13S7TC024337
SCBDB33S5TC024309	SCBCB13S4TC024396	SCBCN13SXTC024409
SCBDM33S2TC024035	SCBCB13S6TC024402	SCBDM33SXTTC024378
SCBDM33S6TC024443	SCBCB13SXTTC024421	SCBDN33S5TC024317
SCBDM33SXTTC024462	SCBCD13S8TC024427	SCBCB13S0TC024346
SCBDN33S4TC024454	SCBCM13S1TC024382	SCBCB13S2TC024350
SCBDN33S4TC024468	SCBCM13S3TC024416	SCBCB13S5TC024133
SCBDN33S4TC024485	SCBCM13S4TC024294	SCBCB13S6TC024304
SCBDR4ZG2TC024367	SCBCM13S4TC024361	SCBCB13S7TC024375
SCBDR4ZGXTTC024441	SCBCM13S5TC024255	SCBCG13S8TC024340
SCBCB13S0TC024444	SCBCM13S5TC024269	SCBCM13S5TC024210
SCBCB13S7TC024411	SCBCM13SXTTC024381	SCBCM13SXTTC024090
SCBCB13S7TC024439	SCBCM13SXTTC024431	SCBCN13S0TC024290
SCBCM13S7TC024046	SCBCN13S3TC024333	SCBCN13S4TC024292
SCBCM13S7TC024435	SCBCN13S5TC024298	SCBCN13S8TC024215
SCBCM1ZG5TC024419	SCBCN13S5TC024320	SCBCP2ZG7TC024287
SCBCN13S3TC024297	SCBCN13S5TC024379	SCBCP2ZG9TC024386
SCBCN13S4TC024406	SCBCN13S7TC024335	SCBDM33S1TC024155
SCBCN13S6TC024245	SCBCR2ZG2TC024420	SCBDM33S1TC024365
SCBCN13S9TC024448	SCBDM33S4TC024392	SCBDP4ZG5TC024398
SCBCN1ZG4TC024344	SCBDM33S7TC024385	SCBCM13S0TC024356
SCBCN1ZG9TC024436	SCBDM33S7TC024418	SCBCM13S1TC024284
SCBCP2ZG8TC024119	SCBDM33S8TC024282	SCBCM13S1TC024348
SCBCR2ZG4TC024399	SCBDP4ZG1TC024303	SCBCM13S4TC024358
SCBDB33S6TC024383	SCBDP4ZG4TC024330	SCBCM13S7TC024368
SCBDN33S5TC024446	SCBDP4ZG4TC024408	SCBCM1ZGXTTC024156

SCBCN13S2TC024310	SCBDR4ZG4TC024323	SCBDR4ZG2TC024045
SCBCN13S4TC024342	SCBDR4ZG5TC023973	SCBCM13S0TC024227
SCBCP2ZG0TC024289	SCBCM13S3TC023783	SCBCM13S1TC024236
SCBCP2ZG4TC024232	SCBCM13S4TC024263	SCBCM13S2TC024228
SCBDM33S4TC024182	SCBCM13S6TC024281	SCBCM13S3TC024190
SCBDM33S6TC024166	SCBCM13S7TC024239	SCBCM13S8TC024167
SCBDM33S6TC024300	SCBCM13S9TC024257	SCBCM13SXTTC024171
SCBDM3ZG2TC024247	SCBCN13S0TC024080	SCBCM13SXTTC024221
SCBDN33S3TC024204	SCBCN13S2TC024114	SCBCN13S1TC024184
SCBDN33S8TC024201	SCBCN13S2TC024243	SCBCN13S4TC024213
SCBDP4ZG0TC024325	SCBCN13S2TC024274	SCBCN13SXTTC024197
SCBDP4ZG3TC024349	SCBCN13S3TC024235	SCBCP2ZG0TC023921
SCBDP4ZG9TC024338	SCBCN13S3TC024266	SCBCR2ZG8TC023949
SCBDR4ZG0TC024268	SCBCN13S9TC024224	SCBDM33S2TC024178
SCBCN13S1TC024315	SCBCP2ZG0TC024194	SCBDM33S5TC024207
SCBCN13S8TC024277	SCBCP2ZG1TC024107	SCBDM33S7TC024144
SCBCN13S9TC024160	SCBCP2ZG3TC024206	SCBDM33S7TC024161
SCBCN1ZG6TC024328	SCBCP2ZG5TC024241	SCBDM33S9TC024212
SCBCP2ZG4TC024229	SCBCP2ZG8TC024248	SCBDM33SXTTC024168
SCBCP2ZG4TC024280	SCBCP2ZG9TC024260	SCBDN33S0TC024158
SCBCP2ZG6TC024250	SCBCP2ZGXTC024154	SCBDN33S7TC024223
SCBCP2ZG6TC024314	SCBDM33S8TC024170	SCBDP4ZG0TC024244
SCBCP2ZGXTTC024218	SCBDM33S9TC024226	SCBDP4ZG1TC024057
SCBCR2ZG3TC024295	SCBDN33S4TC024275	SCBDP4ZG5TC024059
SCBCR2ZG5TC024203	SCBDN33S5TC024219	SCBDP4ZG5TC024076
SCBDM33S0TC024261	SCBDN33S7TC024254	SCBDP4ZG6TC024233
SCBDM33S3TC024240	SCBDP4ZG4TC024196	SCBDR4ZG7TC024140
SCBDM33S8TC024279	SCBDP4ZG5TC024272	SCBCM13S2TC024181
SCBDP4ZG5TC024286	SCBDP4ZG6TC024152	SCBCM13S7TC024130
SCBDP4ZG8TC024265	SCBDP4ZG7TC024189	SCBCM13S9TC024176
SCBDR4ZG0TC024237	SCBDP4ZGXTC024185	SCBCM13SXTTC024087

SCBCM13SXTC024137	SCBCM13S2TC024052	SCBCN13S2TC023979
SCBCN13S4TC024180	SCBCM13S2TC024116	SCBCN13S6TC024066
SCBCN13S5TC024172	SCBCM13S3TC023959	SCBCN13S8TC024005
SCBCN13S6TC024097	SCBCM13S4TC024036	SCBCN13S8TC024103
SCBCP2ZG5TC024143	SCBCM13S7TC023964	SCBCN13SXTC024085
SCBCP2ZGXTC024123	SCBCM13S7TC023981	SCBCP2ZG0TC023711
SCBCP2ZGXTC024199	SCBCM13S9TC023884	SCBCP2ZG5TC023798
SCBCR2ZG8TC024177	SCBCM13S9TC023951	SCBCP2ZG5TC024031
SCBDN33S0TC024175	SCBCM13S9TC024128	SCBCP2ZG8TC024069
SCBDP4ZG6TC024216	SCBCN13S1TC024105	SCBCP2ZG8TC024122
SCBDP4ZG9TC023707	SCBCN13S2TC024100	SCBCP2ZG9TC024016
SCBCM13S0TC024096	SCBCN13S2TC024145	SCBCP2ZGXTC024025
SCBCM13S2TC023824	SCBCP2ZG8TC024072	SCBDM33S2TC023970
SCBCM13S2TC024150	SCBCP2ZGXTC024008	SCBDM33S3TC024061
SCBCM13S3TC024111	SCBCR2ZG2TC024126	SCBDM33S9TC023786
SCBCM13S3TC024173	SCBDM33S3TC024027	SCBDN33S6TC023905
SCBCM13S6TC023860	SCBDM33S5TC024109	SCBDP4ZG3TC023993
SCBCM13S7TC023866	SCBDM33S6TC024104	SCBDP4ZG4TC024070
SCBCM13S7TC024113	SCBDM33S9TC024078	SCBDP4ZG5TC024112
SCBCN13S0TC024063	SCBDN33S4TC024082	SCBDP4ZG8TC023942
SCBCN13S5TC024141	SCBDP4ZG0TC024101	SCBDP4ZG9TC024050
SCBCN13S7TC024089	SCBDP4ZG4TC024148	SCBDR4ZG8TC024065
SCBCP2ZG0TC024146	SCBDP4ZG6TC024068	SCBCM13S6TC023969
SCBCP2ZG4TC024151	SCBDP4ZG6TC024135	SCBCM13S6TC024023
SCBCP2ZG6TC024054	SCBDP4ZG7TC024127	SCBCM13S7TC023897
SCBCR2ZG9TC024110	SCBDR4ZG9TC024091	SCBCM13SXTC024011
SCBDM33S9TC024131	SCBCM13S4TC023971	SCBCM13SXTC024042
SCBDN33SXTC024118	SCBCM13S7TC024029	SCBCN13S3TC024073
SCBDP4ZG4TC024098	SCBCM13SXTC024056	SCBCN13S5TC024009
SCBCM13S0TC024079	SCBCN13S0TC023995	SCBCP2ZG0TC024034
SCBCM13S1TC024088	SCBCN13S0TC024094	SCBCP2ZG1TC024060

SCBCP2ZG3TC023976	SCBCM13S2TC023872	SCBCP2ZG5TC023820
SCBCP2ZG3TC024075	SCBCM13S4TC023999	SCBCP2ZG6TC023941
SCBCR2ZG0TC024044	SCBCM13S8TC023889	SCBCP2ZG8TC023925
SCBCR2ZG7TC024039	SCBCM13S9TC024002	SCBCP2ZGXTTC023974
SCBDM33S7TC023883	SCBCN13S0TC023947	SCBDM33S4TC023937
SCBDN33S3TC023859	SCBCN13S3TC023957	SCBDM33S6TC023955
SCBDN33S7TC024030	SCBCN13S3TC023991	SCBDM33S9TC023920
SCBDN33S8TC024053	SCBCN13S4TC023904	SCBDN33S9TC023963
SCBDP4ZG2TC023984	SCBCN13S5TC023913	SCBDP4ZG1TC023944
SCBDP4ZG5TC023719	SCBCN13S7TC023900	SCBDP4ZG3TC023928
SCBDP4ZG5TC023977	SCBCN13SXTTC023986	SCBDP4ZG9TC023917
SCBDP4ZG5TC024014	SCBCP2ZG1TC023989	SCBDR4ZG1TC023873
SCBDP4ZG6TC024006	SCBCP2ZG7TC023916	SCBDR4ZG7TC023876
SCBDP4ZG6TC024037	SCBCR2ZG9TC023927	SCBCM13S1TC023877
SCBDP4ZG6TC024040	SCBDM33S6TC023714	SCBCM13S5TC023851
SCBDP4ZG8TC023987	SCBDP4ZG4TC023811	SCBCN13S6TC023791
SCBDP4ZG8TC024024	SCBDP4ZG4TC023940	SCBCP2ZG2TC023919
SCBDP4ZG9TC024047	SCBDP4ZG5TC023980	SCBCP2ZG2TC023936
SCBDR4ZG4TC023771	SCBDP4ZG7TC023902	SCBCP2ZG6TC023938
SCBCM13S8TC023827	SCBDP4ZG7TC023950	SCBCP2ZG8TC023911
SCBCM13S8TC023939	SCBDP4ZGXTTC023845	SCBCP2ZG9TC023822
SCBCN13S6TC024021	SCBDR4ZG2TC023932	SCBCR2ZG5TC023892
SCBCP2ZG4TC024019	SCBCM13S1TC023961	SCBDJ33S9TC023909
SCBCP2ZG7TC023835	SCBCM13S2TC023953	SCBDM33S2TC023886
SCBCP2ZG8TC024041	SCBCN13S5TC023829	SCBDM33S9TC023805
SCBDM33S0TC023840	SCBCN13S9TC023879	SCBDN33S6TC023838
SCBDP4ZG2TC024004	SCBCP2ZG1TC023846	SCBDP4ZG0TC023935
SCBDP4ZG5TC023946	SCBCP2ZG2TC023967	SCBDP4ZG3TC023802
SCBDP4ZG9TC023867	SCBCP2ZG3TC023864	SCBCM13S2TC023922
SCBDR4ZG6TC023996	SCBCP2ZG3TC023945	SCBCM13S5TC023901
SCBCM13S0TC023997	SCBCP2ZG3TC023962	SCBCM13S6TC023907

SCBCP2ZG2TC023760	SCBCP2ZG5TC023834	SCBDP4ZG1TC023765
SCBCP2ZG3TC023914	SCBCP2ZG7TC023754	SCBDP4ZG3TC023735
SCBCP2ZG4TC023887	SCBCP2ZG8TC023813	SCBDP4ZG6TC023759
SCBCP2ZG6TC023874	SCBCR2ZG2TC023803	SCBDP4ZGXTTC023733
SCBCP2ZG7TC023933	SCBCR2ZG3TC023812	SCBDR4ZG4TC023818
SCBCR2ZG2TC023882	SCBCR2ZG9TC023796	SCBCM13S5TC023767
SCBCR2ZG9TC023779	SCBDM33S1TC023815	SCBCM13S6TC023809
SCBDM33S2TC023855	SCBDM33S9TC023870	SCBCM13S7TC023785
SCBDM33S9TC023836	SCBDM33SXTTC023697	SCBCM13S9TC023772
SCBDM33S9TC023898	SCBDP4ZG1TC023880	SCBCN13S1TC023732
SCBDN33S0TC023799	SCBDP4ZG3TC023850	SCBCN13S3TC023781
SCBDP4ZG4TC023923	SCBDP4ZG4TC023808	SCBCN13S9TC023817
SCBDP4ZG5TC023896	SCBDP4ZG4TC023825	SCBCP2ZG2TC023743
SCBDP4ZG8TC023777	SCBDP4ZG5TC023722	SCBCP2ZG2TC023757
SCBDP4ZGXTTC023862	SCBDP4ZG6TC023843	SCBCP2ZG3TC023704
SCBDP4ZGXTTC023893	SCBDP4ZG7TC023821	SCBCP2ZG5TC023736
SCBDP4ZGXTTC023912	SCBDP4ZGXTTC023795	SCBCP2ZG7TC023690
SCBDP4ZGXTTC023926	SCBDP4ZGXTTC023828	SCBCP2ZG7TC023706
SCBDR4ZG1TC023890	SCBDR4ZG0TC023833	SCBCP2ZG7TC023723
SCBDR4ZG5TC023746	SCBCM13S3TC023699	SCBCP2ZGXTTC023764
SCBCN13S5TC023720	SCBCM13S4TC023842	SCBCP2ZGXTTC023778
SCBCR2ZG0TC023895	SCBCM13S6TC023857	SCBCR2ZG0TC023718
SCBDM33S2TC023774	SCBCN13S7TC023816	SCBCR2ZG1TC023775
SCBCM13S0TC023854	SCBCN13S9TC023848	SCBCR2ZG3TC023695
SCBCM13S1TC023751	SCBCP2ZG2TC023788	SCBCR2ZG3TC023745
SCBCM13SXTTC023831	SCBCP2ZG6TC023762	SCBCR2ZG6TC023738
SCBCP2ZG0TC023806	SCBCP2ZG8TC023794	SCBCR2ZG7TC023702
SCBCP2ZG0TC023837	SCBCP2ZG9TC023769	SCBCR2ZG8TC023692
SCBCP2ZG0TC023868	SCBDM33S4TC023792	SCBCR2ZGXTTC023709
SCBCP2ZG1TC023698	SCBDM33SXTTC023747	SCBDM33S0TC023742
SCBCP2ZG1TC023801	SCBDP4ZG1TC023703	SCBDM33S4TC023789

SCBDM33S9TC023691  
SCBDN33S1TC023780  
SCBDN33S7TC023752  
SCBDP4ZG2TC023726  
SCBDP4ZG6TC023700  
SCBDP4ZG8TC023729  
SCBDR4ZG1TC023694  
SCBDR4ZG7TC023716  
SCBCM13S1TC023734  
SCBCM13S6TC023731  
SCBCM13S9TC023741  
SCBCN13S4TC023708  
SCBDP4ZG9TC023495  
SCBCN13S4TC023725  
SCBCN13S5TC023748  
SCBCN13S8TC023727  
SCBDM33S2TC023712  
SCBDN33S4TC023739  
SCBDM33S5TC023493