



# Service Bulletin

Bulletin No.: PIC6455A

Date: August, 2025

## PRELIMINARY INFORMATION

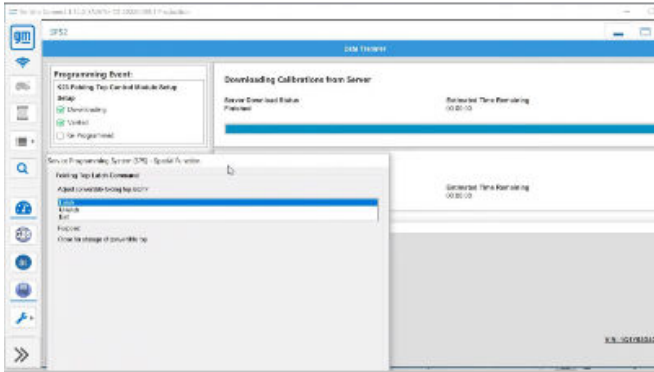
**Subject: Diagnostic Tip - Information on the Folding Hard Top**

Brand:	Model:	Model Year:		VIN:		Engine:	Transmission:
		from	to	from	to		
Chevrolet	Corvette Convertible	2020 - 2026		All	All	All	All

<b>Involved Region or Country</b>	North America
<b>Additional Options (RPO)</b>	RPO CM9 - Power Retractable Hardtop
<b>Condition</b>	When diagnosing a concern on a C8 Corvette Convertible (model years 2020+), some technicians may find that the front roof panel will not raise or lower using the switch on the driver's door, or the procedure using the key fob. The roof may not move at all, and the tech may wonder how to test the system.
<b>Concern</b>	If it has been confirmed that the front header latch actuator will not move on a C8 Corvette Convertible, the technician may wish to test the front header latch actuator by commanding it to open and close with the scan tool. This test would normally be located in the scan tool (GDS2) for most convertibles, but it has been moved to a different location due to cybersecurity changes within the VIP architecture. The command for the front header latch actuator is no longer found in the scan tool on these vehicles. It is now located within the SPS programming portion of Techline Connect (TLC).

### Correction

To access this feature, first select SPS programming within the Techline Connect (TLC) program. Then, select the K23 Folding Top Control Module from the list. Once in this module, select the Setup selection. This will allow the user to access the latch and unlatch selections for the front header latch of the vehicle. The dealership technician may now cycle the header latch (or at least attempt to cycle the latch) as desired.



6056377

<b>Version</b>	2
<b>Modified</b>	05/18/2022 - Created on. 08/19/2025 – Updated Model Years.

