

G-MOPF 2018: Wind/Clattering Noises In A-pillar/Outside Mirror Area From 20mph

Topic number	LI72.10-P-079446
Version	1
Function group	72.10 - Front door
Date	8/5/25
Validity	Model 463 facelift as of model year 2019 (as of code XZ8)
Reason for change	

Complaint

Customer complaint concerns wind/clattering noises upwards of 20mph in the area of the A-pillar, the outside mirror or at the front doors (cf. attachment).

Attachments	
File	Description
Geräusche ab 30 kmh.MP4	Customer complaint video

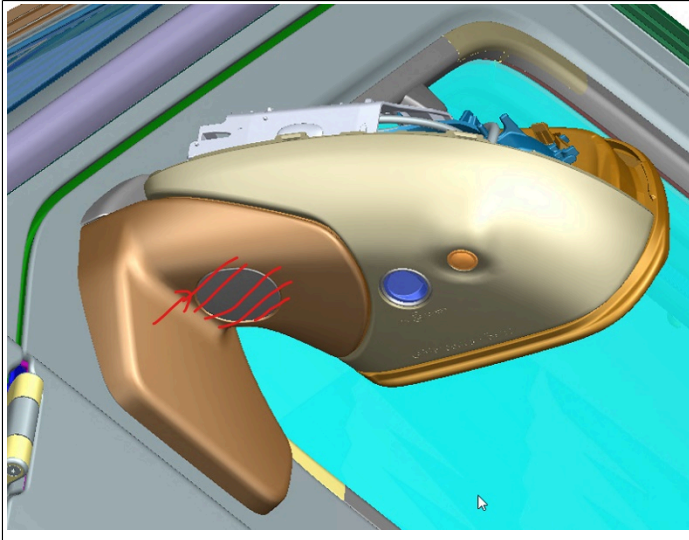
Cause

Cover trim on the underside of the outside mirror.

Remedy

For troubleshooting, mask off the cover trim on the underside of the outside mirror (see attachment) and perform a test drive. If the problem can no longer be perceived, seal the cover trim with a butyl/sealing cord or replace if necessary.

Attachments	
File	Description
Abdeckblende Spiegelfuß_LI.jpg	Cover trim on underside of outside mirror



Disclaimer

NOTE: The information contained in this document is intended for use by trained, professional technicians with the knowledge to properly and safely perform diagnosis and repairs on Mercedes-Benz vehicles, using Mercedes-Benz approved tools and equipment. It informs service technicians about conditions that could occur in certain vehicles and provides information that could assist in proper vehicle diagnosis, service, or repair. It does not indicate that a defect is present in any vehicle referenced in this document nor does it imply warranty coverage. DO NOT assume that a symptom or condition, or a described cause of a symptom or condition, affects any particular vehicle or groups of vehicles, or that a described repair applies to any particular vehicle or groups of vehicles. There can be multiple causes resulting in the same or similar symptoms or conditions described in this document, and trained professional service technicians must use their diagnostic skills to make evaluations on a case-by-case basis. The information contained in this document does not guarantee warranty coverage nor does it extend the vehicle's warranty in any way.

Symptoms

Body > Body/Cab > Body noises > Wind noises

Body > Body/Cab > Body noises > Vibrates/makes noises

Body > Door/Flap > Door > Door > Noise

Body > Door/Flap > Door > Door > Wind noises

Body > Door/Flap > Outside mirror > Mirror/Mirror adjustment > Noise

Body > Door/Flap > Outside mirror > Mirror housing > Wind noises

Parts

Part number	ES1	ES2	Designation	Quantity	Note	EPC
A1678112400			Outside mirror cover trim	1	Replace if necessary	X

Operation numbers/damage codes

Op. no.	Operation text	Time	Damage code	Note
			81B0136	Left outside mirror
			81P0136	Right outside mirror