



# TECH TALK - VOLUME 287 JULY/AUGUST 2025

## TECHNICAL INFORMATION: MATERIAL RETURN PACKAGING REQUIREMENTS REMINDER

### INSIDE THIS ISSUE:

- Technical Information - Page 1
- Bulletin Review - Page 1
- Technical Training - Page
- News & Notes - Page



### UPCOMING HOLIDAYS:

Labor Day - September  
1<sup>st</sup>



### REMINDER:

TQ022025 3rd Quarter  
Technician Quiz for 2025  
is available July 1-  
September 30, 2025.  
**Dealer personnel must  
successfully complete  
this quiz no later than  
September 30, 2025.**



**DEALER TECHNICIANS:**  
We'd like to hear from you!

Please submit tips and  
suggestions for future Tech  
Talk articles to:  
servicesupport@mmsa.com



**AFFECTED VEHICLES:** ALL MODELS

**GROUP:** 00

### CONCERN:

Mitsubishi would like to remind all dealers to use the original box, whenever possible, for Material Return parts. Additionally, the following guidelines must be followed to make sure the items being returned are received without damage.

**Note: Failure to properly package Material Return parts will subject the claim to full debit.**

- The original box should be used to return the parts along with all the original padding/packing material arranged and packed in the same way the new part arrived (Unless there is damage to the box making it unusable, in which case a similar box should be used that will keep the part secure).
- Items containing fluids, such as engines and transmissions, must be fully drained. This includes transfer cases, differentials, radiators, etc.
- Heavy parts must be secured with banding straps when necessary. Additionally, if the part arrived on a pallet, the box should be secured to the pallet with proper banding.
- All parts removed from a vehicle should be removed in a manner that reasonably avoids damage to the old part.



If you have any questions, please call the Warranty Information Line @ 1.800.380.2324.

You may also email us at: [WarrantyWebHotline@mmsa.com](mailto:WarrantyWebHotline@mmsa.com).



**TECHNICAL INFORMATION:** FENDER EFFECT INSTALLATION CONCERNS

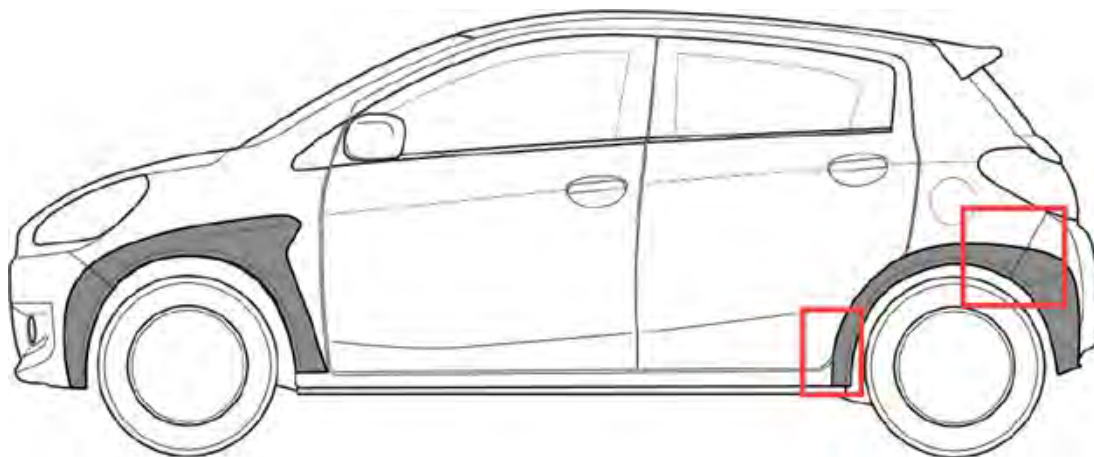
**AFFECTED VEHICLES:** 2022-2024 MIRAGE

**GROUP:** 00

**PART INFORMATION:**

MZ331590 - Fender Effects, Black Edition

MZ331591 - Fender Effects, RalliArt Edition



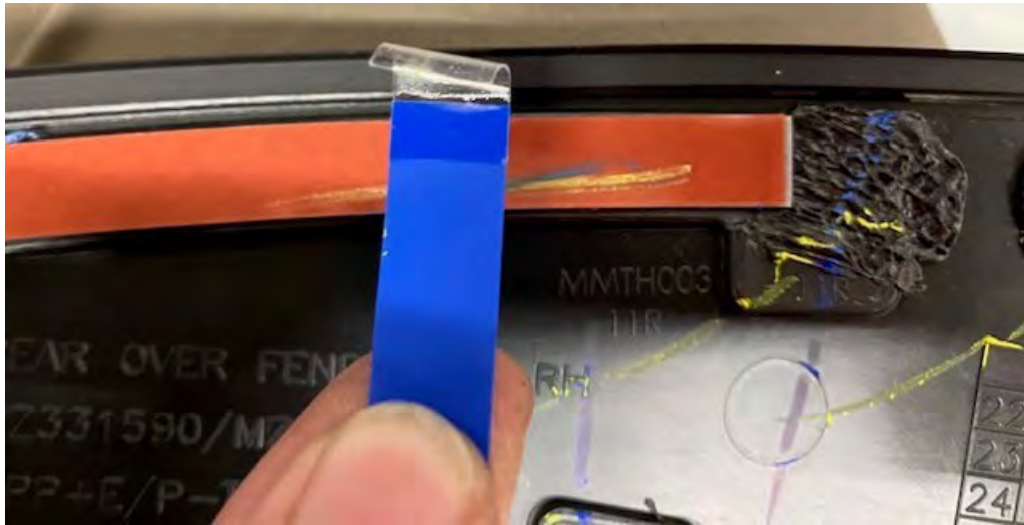
**CONCERN:**

During installation of replacement rear fender effects, from either warranty or collision repair, the recommendations below will assist the technician in repairing the vehicle the first time and improved customer satisfaction. Newly installed part may not properly adhere to the vehicle due to:

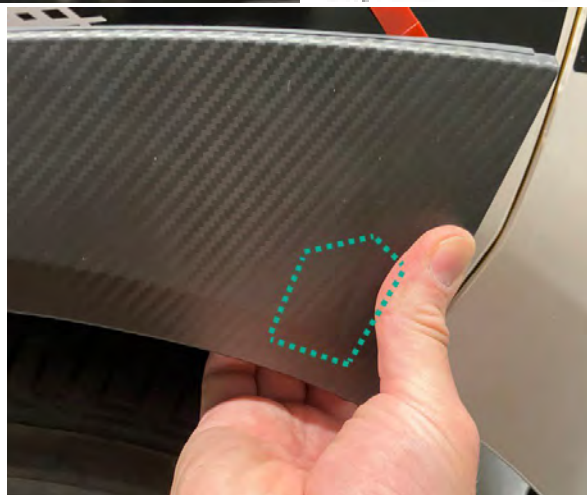
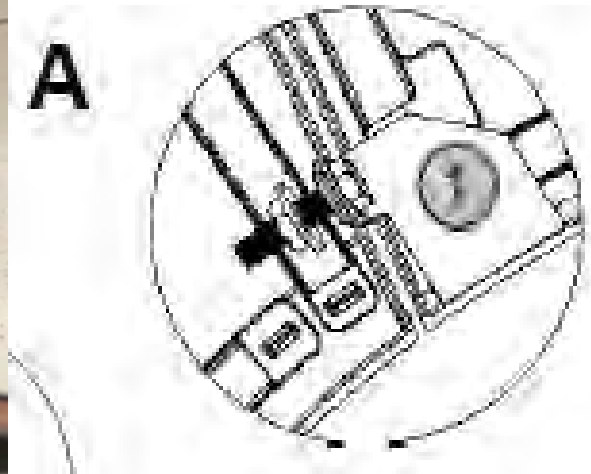
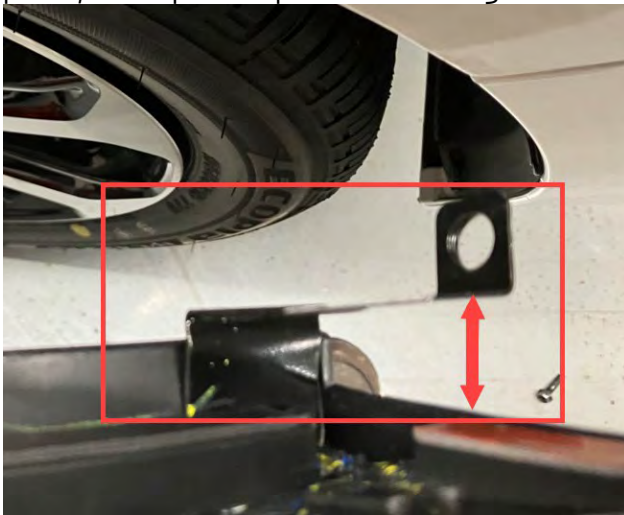
- Release paper was not fully peeled
- Quarter panel effects rear bracket became bent during installation
- Quarter panel effects front bracket was over torqued during installation
- Rear bumper effect was not aligned properly during installation

**RECOMMENDATION:**

- This accessory comes with blue "starting" tape to assist in peeling off the tape's red release paper. At times when pulled, this blue section will separate before peeling up part of the red release paper. If an installer does not notice the red release paper did not peel off the tape, that section will not adhere proper to the vehicle.

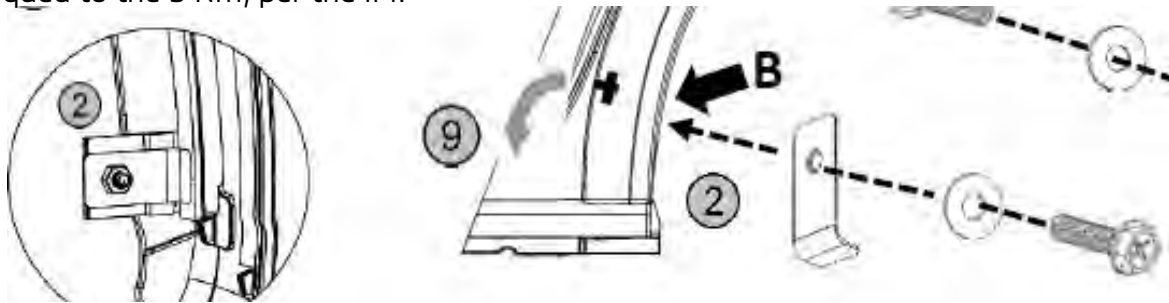


- When positioning the quarter panel effect into the wheel well, it is possible to flex and deform the bracket. If not corrected, the enlarged gap can cause the quarter panel effect to separate from the vehicle. To realign the bracket, gently squeeze the bracket, quarter panel, and quarter panel effect together before securing bolt.

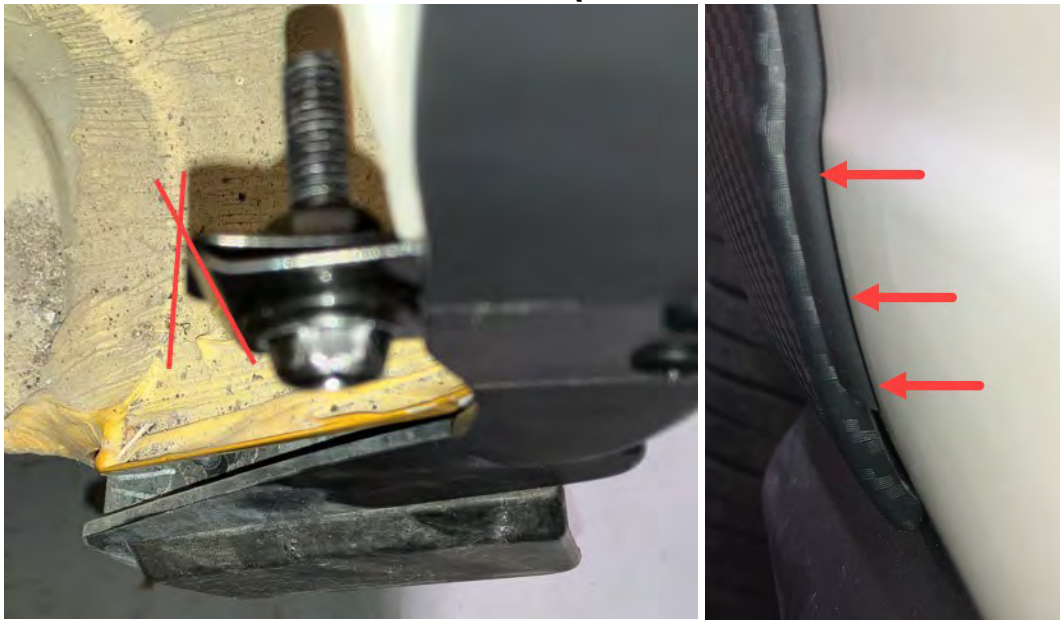


- When tightening the front bracket on the quarter panel effect, do not over torque the bolt. Over torquing will be deform and misalign the bracket. This deformation pulls the quarter

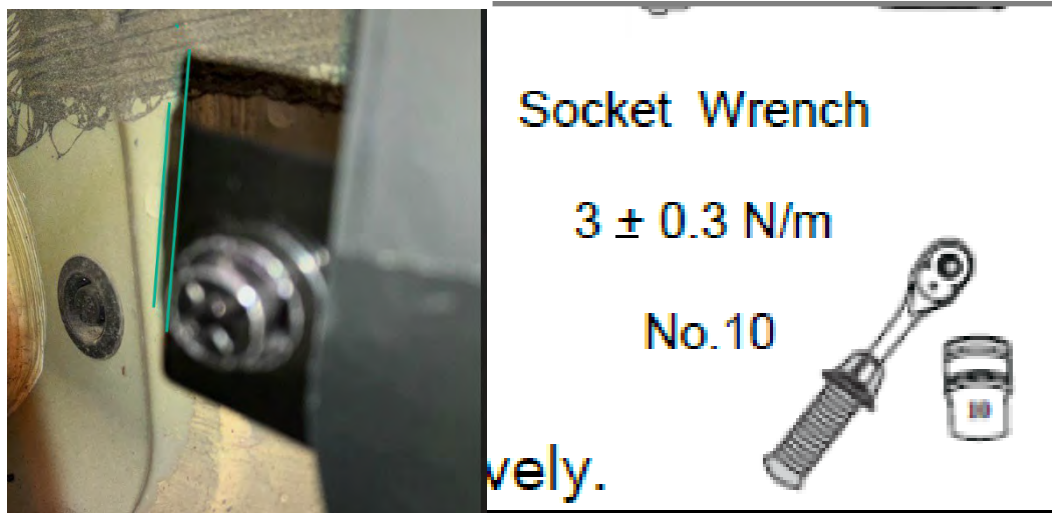
panel effect and separates it from the vehicle. Ensure the bracket is properly aligned and torqued to the 3 Nm, per the IM.



**OVER TORQUED**

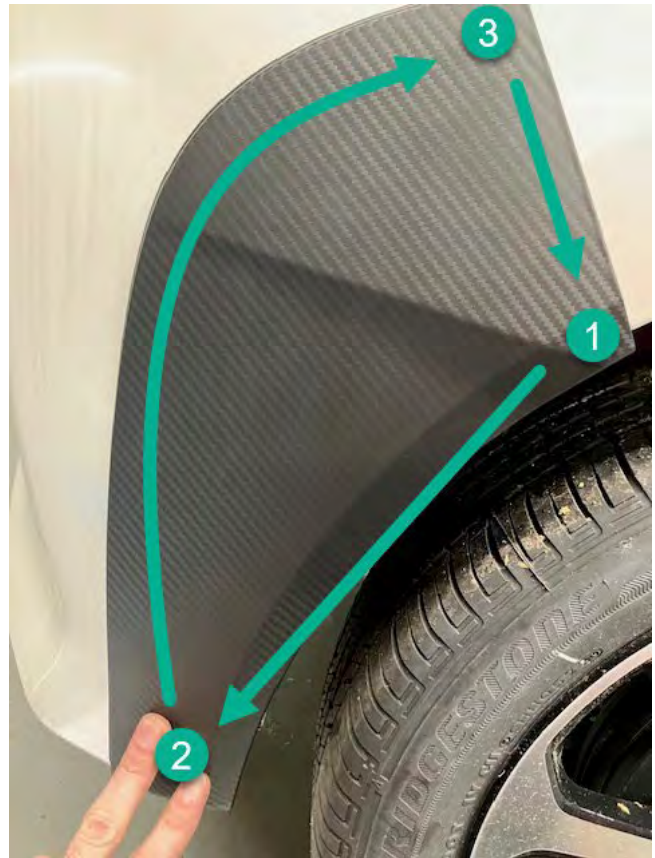


**CORRECTLY TORQUED**



- When aligning the rear bumper affect, position these points below, in order, to achieve the proper gap and maximum adhesion.

- 1) Align corner of rear bumper effect to bottom corner of bumper.
- 2) Align bottom of rear bumper effect tight to inner wheel well and bottom of bumper.
- 3) Align top corner of rear bumper effect to the top corner of bumper.



#### **Vehicle accessory fitment**

- Check that all bolts are securely torqued, and all clips are fastened securely in place
- Make sure that double-sided tape is securely attached, and the trim is flushed with vehicle surface



**TECHNICAL INFORMATION:** SC-23-001 FOR 2022-2023 OUTLANDERS

**AFFECTED VEHICLES:** 2022-2023 OUTLANDER

**GROUP:** 13

**CONCERN:**

If you encounter a 2022-2023 Outlander built before VIN JA4J4UA84PZ038335 with a CEL illuminated and DTCs associated with the EGR Temperature Sensor, you should confirm the completion of Service Campaign SC-23-001 and verify it was completed correctly. To confirm, proceed with the following:

- Review the Super Screen to confirm the Service Campaign was previously completed
- Confirm the software level by following the instruction in SC-23-001

Keep in mind the EGR Temperature Sensor ***DOES NOT*** need replacement if the Service Campaign was completed properly.



**TECHNICAL INFORMATION:** 12V Battery Topics for 2023-2024 Outlander Plug-in Hybrid

**AFFECTED VEHICLES:** 2023-2024 Outlander Plug-in Hybrid

**GROUP:** 54

**CONCERN:**

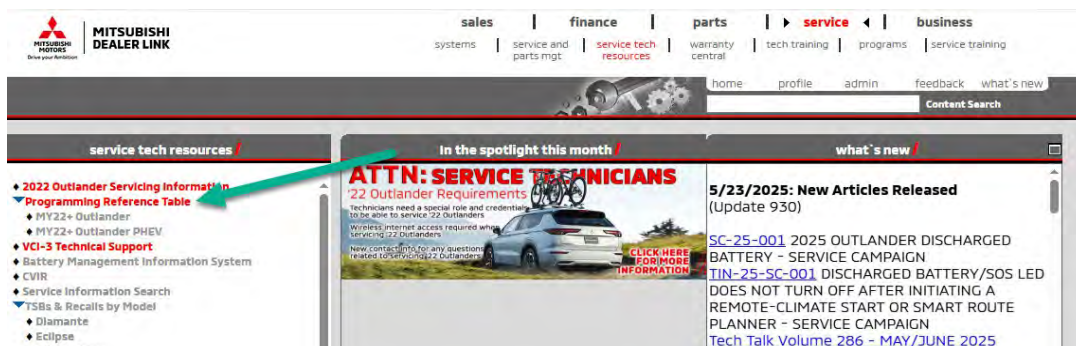
When evaluating a 2023-2024 Outlander Plug-In Hybrid built before 2/8/2024 for a discharged 12V battery that requires replacement of the battery, make sure to also perform **TSB-24-54-002**. The purpose of the TSB is to help keep the auxiliary battery charged.

MMNA is aware of discharged 12V batteries causing other issues with this model that may result in the vehicle being unable to go into the **"Ready Mode."**

Additional conditions to look for when the 12V auxiliary battery completely discharges in a 2023-2024 Outlander Plug-In Hybrid include:

- DTCs (U3EFF-06 or U3D01-06) in the ECM or PHEV-ECU, respectively. Remember to perform the Compulsion Boot Mode in the module where the DTC is present. This should restore operation of the vehicle.
- If the MUT3SE diagnostic tool will not pull the VIN automatically when connected, proceed with checking the software number in the ECM. If the number is all zeros, call TL to proceed with running the software manually using the Programming Reference Table found on the MDL.

*Thanks for this tip goes to [Ethan Acosta](#) at Hanania Mitsubishi in Jacksonville, Florida.*



**TECHNICAL INFORMATION:** CRANK - NO-START

**AFFECTED VEHICLES:** All Mirage and Mirage G4

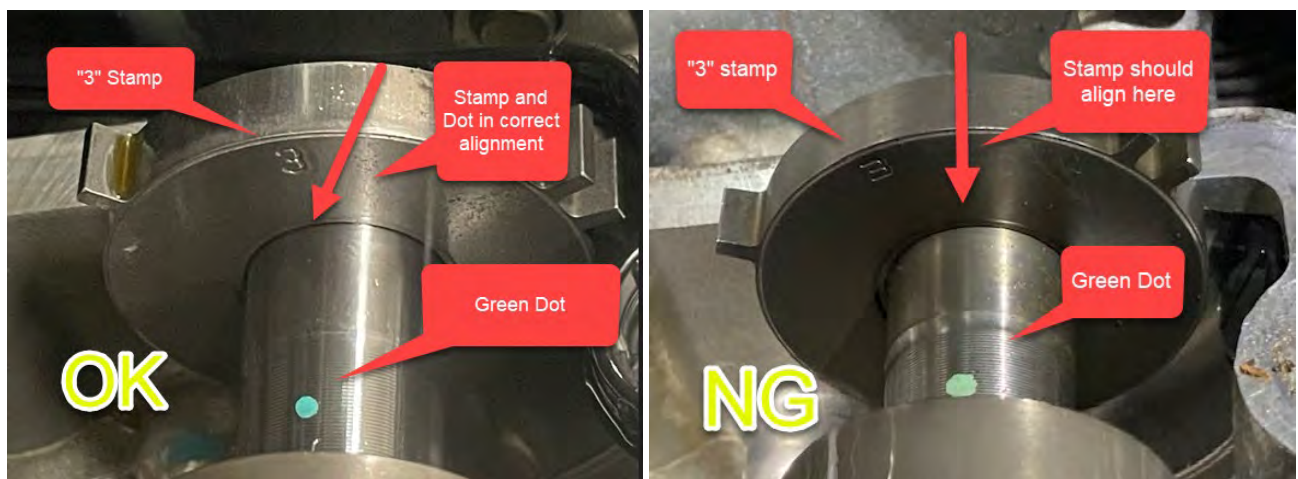
**GROUP:** 11

**CONCERN:**

When checking a Mirage or Mirage G4 with a 3A92 1.2 liter engine for a crank/no-start concern, technicians may note the presence of DTC P0335 or P0341 stored in the MFI Control Unit. Upon inspection of Engine RPM in the Data List on the scan tool, technicians may note the cranking speed is displayed at 114 RPM. Technicians may also notice the engine will fire briefly but fails to stay running. Technicians should inspect the following items:

- Ensure the battery is fully charged
- Remove all spark plugs and inspect for any excessive wear or abnormal deposits
- Test for proper cylinder compression readings and any excessive cylinder leakdown using commercially available test equipment
- Inspect for the presence of crankshaft and camshaft position signals using an oscilloscope
- Check all wiring between the crankshaft and camshaft positions sensors and the MFI Control Unit for any damage including proper pin tension using a suitable commercially available pin tension test gauge

After testing, if the camshaft position signal is found to be missing or abnormal, remove the engine camshaft cover. Inspect the intake camshaft for a misaligned camshaft position sensor target wheel. To ensure the alignment of the target wheel is correct, rotate the engine until it is at #1 cylinder Top Dead Center. Then find the "3" stamp on the target wheel. This stamp should be aligned with a green dot on the camshaft itself. If these markings are not in line with one another, the target wheel has moved out of position which will alter camshaft position sensor timing. This will result in an incorrect engine cranking speed in the MFI Control Unit. This, in turn, prevents proper fuel and spark timing and prevents the engine from running. If this condition is found, replace the intake camshaft to correct the concern.



**TECHNICAL INFORMATION:** STEERING GEAR AND LINK ASSEMBLY

**AFFECTED VEHICLES:** 2022-2025 Outlander

**GROUP:** 37

**CONCERN:**

When replacing the steering gear and link assembly, be sure to follow the "Additional Service When Replacing Power Steering Control Module Control Unit" section in the service manual. There have been reported instances of uneven steering effort after this replacement. This is often due to incorrect calibration of the torque sensor neutral position.

Important Calibration Notes:

- During torque sensor neutral position learning, the system corrects the voltage stored in the control unit for the torque center.
- If any pressure is applied to the steering wheel during this process - by hand, the Medic Tablet, cable, or otherwise, the system may incorrectly register that position as neutral.
- Ensure nothing touches the steering wheel until the calibration is fully complete.

If Uneven Steering Effort Persists:

1. Use the MUT-III SE diagnostic tool to check the torque center learning values (items 13 - 16) from the EPS-ECU (refer to the service manual).
2. If needed, repeat the torque center learning procedure, ensuring the steering wheel remains untouched.
3. Recheck the learning values using the MUT-III SE diagnostic tool.

If the values remain unchanged and the issue persists:

- Use a push-pull gauge attached to the steering wheel to measure the force required to steer left and right
- Record the difference in steering effort to help diagnose the problem further

## TECHNICAL INFORMATION: ACCESSING THE BATTERY CCA APPLICATION CHART

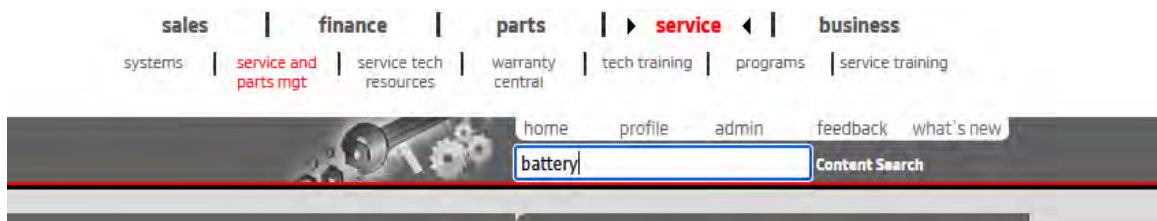
**AFFECTED VEHICLES:** All

**GROUP:** 54

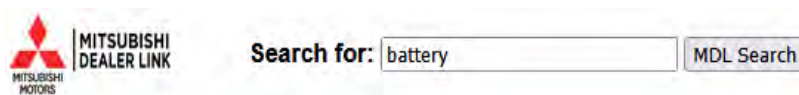
### CONCERN:

How to access the Battery application chart to find the CCA of factory and aftermarket batteries.

Using MDL go to: Service, Service Tech Resources, and type "Battery" in the Content Search field.




Then hit the return/enter button.




### Results for battery

 [016 Troubleshooting battery denials.pdf](#) (Relevance: 99%)

application/pdf <http://extraprod2.mmsa.com/warranty/Quick Flow charts/016 Troubleshooting battery denials.pdf> - 12.42 kB - Apr 29, 2017

 [Battery Application Guide](#) (Relevance: 30%)

application/pdf [http://extraprod2.mmsa.com/parts\\_web/technical/batteryapplguide/BatteryAppliGuide.pdf](http://extraprod2.mmsa.com/parts_web/technical/batteryapplguide/BatteryAppliGuide.pdf) - 12.40 kB - Apr 29, 2017

 [warranty\\_battery.html](#) (Relevance: 30%)

Click on the Battery Application Guide link. The application guide will be displayed:

ORIGINAL EQUIPMENT				REPLACEMENT BATTERIES				
MODEL	OEM	YEAR	CCA	GROUP	PART NUMBER	CCA	OPTIMA	CCA
3000 GT	75D23R	1991-1999	525	24	A993FB1X02	525	A993FB5X01	720
CORDIA		1983-1988	525	24	A993FB1X02	525	A993FB5X01	720
	80D26R	2004	600	75DT	A994FB1X01	600		



## TSB/TIN/ATIN/SC/SR REVIEW

Since Tech Talk 286, the following bulletins have been published:

PUBLISH DATE	TSB/ATIN/TIN #	SUBJECT	MODELS
5/23/2025	TIN-25-SC-001	DISCHARGED BATTERY/SOS LED DOES NOT TURN OFF AFTER INITIATING A REMOTE-CLIMATE START OR SMART ROUTE PLANNER - SERVICE CAMPAIGN	
	SC-25-001	2025 OUTLANDER DISCHARGED BATTERY - SERVICE CAMPAIGN	2025 OUTLANDER
6/10/2025	TIN-25-00-008	NO PROBLEM FOUND OR UNABLE TO DUPLICATE PROCESS REMINDER	ALL
6/16/2025	SR-25-001	ALLIANCE IN-VEHICLE INFOTAINMENT (A-IVI) OPERATION FAILURE - SAFETY RECALL CAMPAIGN	2022-2024 OUTLANDER AND 2023-2025 AND CERTAIN 2025 OUTLANDER PLUG-IN HYBRID
	TIN-25-SR-001	ALLIANCE IN-VEHICLE INFOTAINMENT (A-IVI) OPERATION FAILURE - SAFETY RECALL CAMPAIGN	2022-2024 OUTLANDER AND 2023-2025 AND CERTAIN 2025 OUTLANDER PLUG-IN HYBRID
7/2/2025	SC-25-002	WARRANTY AND MAINTENANCE MANUAL UPDATE FOR VEHICLES REGISTERED IN COLORADO - SERVICE CAMPAIGN	2022 OUTLANDER PLUG-IN HYBRID
	TIN-25-54-006	12V BATTERY TOPICS FOR 2023-2024 OUTLANDER PLUG-IN HYBRID	2023-2024 OUTLANDER PLUG-IN HYBRID
7/14/2025	TIN-25-13-001	FUEL GAUGE INACCURATE	2022-2024 OUTLANDER
	TIN-25-51-001	PEELING OF LEATHER INTERIOR COMPONENTS	2022-2025 OUTLANDER AND 2023-2025 OUTLANDER PLUG-IN HYBRID

### IMPORTANT

Affected new or used vehicle inventory must be repaired before the vehicle is sold or delivered. Dealers must check their vehicle inventory VINs on the Warranty Superscreen to verify whether the vehicle is involved in a recall campaign.

It is a violation of Federal Law for a dealer to sell or deliver a new motor vehicle or any new / used motor vehicle equipment (including a tire) covered by the notification under a sale or lease until the defect or non-compliance is remedied.





# TECHNICAL TRAINING COURSE SCHEDULE

Atlanta Technical Training Center - Southeast Region  
 801 Interstate West Parkway, Lithia Spring, GA 30122  
 (770) 732-3000 Airport: Atlanta (ATL)

July 25				
Monday	Tuesday	Wednesday	Thursday	Friday
30	1	2	3	4
7	CC1	CC1	CC1	CC1
14	25	16	17	18
23	22	23	24	25
28	29	30		
	ADAS	ADAS	ES	ES

August 25				
Monday	Tuesday	Wednesday	Thursday	Friday
31	25	30	31	
4	ADAS	ADAS	ES	ES
11	SMI V-ILT	ER1	ER1	ER1
18	MED4 V-ILT	STV4 V-ILT	EL1 V-ILT	EL1 V-ILT
25				
25	PHEVG2TT V-ILT	PHEVG2TT V-ILT	PHEVG2TT V-ILT	PHEVG2TT V-ILT

September 25				
Monday	Tuesday	Wednesday	Thursday	Friday
1	2	3	4	5
8	9	ER1	ER1	ER1
15	CC1	CC1	ES	ES
22	23	24	25	26
29	30	1	2	3

New Jersey Technical Training Center - Northeast Region  
 516 Heron Drive, Swedesboro NJ 08085  
 (856) 467-7100 Airport: Philadelphia (PHL)

July 25				
Monday	Tuesday	Wednesday	Thursday	Friday
7	ER1	ER1	ER1	ER1
14	ER1S	ER1S	ER1S	ER1S
21	MED4 V-ILT	STV4 V-ILT	EL1 V-ILT	EL1 V-ILT
28				
28	PHEVG2TT V-ILT	PHEVG2TT V-ILT	PHEVG2TT V-ILT	PHEVG2TT V-ILT

August 25				
Monday	Tuesday	Wednesday	Thursday	Friday
4	PHEVG2TT V-ILT	PHEVG2TT V-ILT	PHEVG2TT V-ILT	PHEVG2TT V-ILT
11	CC1	CC1	ES	ES
18	SPI V-ILT	CVT F2F	ES	ES
25	ADAS	ADAS	ES	ES

September 25				
Monday	Tuesday	Wednesday	Thursday	Friday
8	9	ER1	ER1	ER1
15	ADAS	ADAS	ER1S	ER1S
22	MED4 V-ILT	STV4 V-ILT	EL1 V-ILT	EL1 V-ILT
29				
29	PHEVG2TT V-ILT	PHEVG2TT V-ILT	PHEVG2TT V-ILT	PHEVG2TT V-ILT

Franklin Technical Training Center  
 1552 Columbia Avenue, Franklin TN 37064  
 (657) 238-2891 Airport: Nashville (BNA)

July 25				
Monday	Tuesday	Wednesday	Thursday	Friday
7	MED4 V-ILT	STV4 V-ILT	EL1 V-ILT	EL1 V-ILT
14				
21				
28				

August 25				
Monday	Tuesday	Wednesday	Thursday	Friday
4	MED4 V-ILT	STV4 V-ILT	EL1 V-ILT	EL1 V-ILT
11				
18				
25				

September 25				
Monday	Tuesday	Wednesday	Thursday	Friday
8	MED4 V-ILT	STV4 V-ILT	EL1 V-ILT	EL1 V-ILT
15				
22				
29				

Course Title	Days	Code	Prerequisites
Engine & Emission Control Systems	4	EECS	ES1W, EL1, STV4, MED4, ME3W
Engine Repair	3	ER1	ES1W, EL1, STV4, MED4, ME3W
Climate Control	2	CC1	ES1W, EL1, STV4, MED4, ME3W
Plug-In Hybrid Electric Vehicle (Virtual) or (F2F)	2	PHEVG2TT	EL1, STV4, MED4, DGPHEVWT
MEDIC4 (Virtual) or (F2F)	1	MED4	ME3W
STV4 (Virtual) or (F2F)	1	STV4	No Prerequisites
Electrical Systems 1 (Virtual) or (F2F)	2	EL1	ES1W
Advanced Driver Assistance Systems	2	ADAS	ES1W, EL1, STV4, MED4, ME3W
Chassis Electrical Systems	2	ES	EL1, STV4, MED4, ME3W, ES1W
CVT OVERHAUL PROCEDURES (Virtual) or (F2F)	1	CVT	STV4, MED4, EL1, ATFW
Brake Control System	2	BCS	MED4, STV4, EL1
Service Manual Introduction (Virtual) or (F2F)	1	SMI	MED4, STV4, EL1

Classes shaded in Green are (V-ILT) Virtual Instructor Led Training

MMNA technical on site training is not shaded

CVT, SMI, PHEVG2TT, MEDIC4, STV4, and EL1 will be offered in two training formats.  
 1. V-ILT online instructor-led.  
 2. F2F in center training.



## MITSUBISHI MOTORS: WHAT'S NEW FOR 2026

- 2026 Outlander Plug-in Hybrid sees mid-cycle refresh including larger battery capacity with increased all-electric range, revised front and rear styling, revised interior, improved driving dynamics, Yamaha audio
- 2026 Outlander receives all-new mild-hybrid gasoline-electric powertrain; still the least-expensive three-row vehicle available
- 2026 Eclipse Cross adds standard hood badging on SEL and SEL Touring trims
- 2026 Outlander Sport continues to provide value-conscious buyers the features and styling they want

**FRANKLIN, Tenn., Jul. 16, 2025** – Value, quality and durability have always been the hallmarks of Mitsubishi Motors vehicles, and the 2026 model-year sees the brand's commitment to exceeding customers' expectations – what you get and what you pay for it – raised to new levels. [Mitsubishi Motors North America, Inc.](http://www.mitsubishicars.com) (MMNA) today announced updates to its 2026 model year lineup, highlighted by a significantly updated 2026 Outlander Plug-in Hybrid and an all-new mild-hybrid gasoline-electric powertrain in the Outlander.

With these significant updates to the Outlander family, Mitsubishi Motors continues to deliver on the promises made in its five-year North American business plan, Momentum 2030, which will see a new or significantly revised vehicle launched in the U.S. each year from 2026 to 2030.

Pricing and full technical and specification details on all models will be announced closer to each vehicle's launch.

### 2026 OUTLANDER PLUG-IN HYBRID

New for 2026 is a mid-cycle refresh that debuted on the non-plug-in hybrid model for 2025, led by a redesigned interior with significant attention paid to sound-deadening, as well as new materials, new colors, heated and cooled front seats, a redesigned center console with larger-capacity armrest storage, new cupholders and a redesigned phone charger. Also standard on the updated vehicle is a U.S.-industry-exclusive Yamaha® audio system<sup>1</sup> and available 12.3" infotainment display screen. On the outside, a revised grille area, redesigned front bumper and new 20" wheels draw attention, as do smoked rear taillights.

Mechanically, the new Outlander Plug-in Hybrid features a larger-capacity drive battery. This will increase all-electric range, decrease the amount of time the internal combustion engine runs and lead to improved on-road acceleration performance. Under the skin, steering and ride quality are revised through extensive tuning of dampers, springs, stabilizer bars and bushings, all of which combine to produce a more confident and assured driving feel.

As the world's first plug-in hybrid electric SUV, the Outlander Plug-in Hybrid continues to offer customers more value, more technology and more satisfaction year over year. Featuring an award-winning mix of confident, quiet, eco-friendly motoring, every 2026 Outlander Plug-in Hybrid sports powerful front and rear motors to deliver Mitsubishi Motors' motorsport-inspired Super-All Wheel Control (S-AWC) twin-motor all-wheel-drive system<sup>1</sup>.

More information and pricing will be provided late this year; the vehicle will debut in Q1 2026.

### **2026 OUTLANDER**

For 2026, Outlander is equipped with a new Mitsubishi Motors-designed and developed engine, the basis of which is shared with Eclipse Cross. A 1.5-liter turbocharged, 16-valve, four-cylinder gasoline unit, this engine will be combined with the company's first mild-hybrid system. Replacing the 2.5-liter engine in the current Outlander, the new powertrain will deliver increased confidence and drivability thanks to electrified torque aiding off-the-line acceleration.

2026 also will see the introduction of a new LE trim, slotted between the entry-level ES and mid-grade SE, as well as a top-line SEL Black Edition and the return of the popular Ralliart model.

Building on the overwhelming success of Outlander since the launch of this new-generation model in 2022, the 2025 Outlander debuted with a mid-cycle refresh to interior and exterior styling and customer touch-points, as well as revised road manners. Cosmetically, it carries over into the 2026 model-year unchanged.

Pricing and more information about the 2026 Outlander will be released later this year; the vehicle will be available in Q4 2025

### **2026 ECLIPSE CROSS**

Changes to the 2026 model are minimal, with the deletion of the embedded navigation and the inclusion as standard on SEL and SEL Touring models of the popular "Eclipse Cross" hood badging (previously a port- or dealer-installed option). Apple CarPlay and Android Auto integration continues to be standard equipment on all Eclipse Cross models, regardless of trim level.

The 2026 Eclipse Cross retains its predecessor's chiseled front and rear design enhancements, with the successful and popular compact crossover utility vehicle otherwise carrying over for the 2026 model year unchanged.

All 2026 Eclipse Crosses sport Mitsubishi Motors' signature motorsport-derived S-AWC all-wheel drive system as standard equipment, which helps in various weather conditions and types of road surfaces<sup>2</sup>.

### **2026 OUTLANDER SPORT**

One of Mitsubishi Motors' best-known nameplates, the 2026 Outlander Sport heads into the new year as a carry-over model from 2025. The brand's least expensive vehicle, Outlander Sport offers quality, an industry-leading warranty and the outstanding value that customers expect from Mitsubishi Motors.

Standard on every 2026 Outlander Sport is Mitsubishi's All-Wheel Control (AWC) all-wheel-drive system<sup>3</sup>, powering adventures and off-highway exploration. Family features like rear-seat warning, standard Apple CarPlay and Android Auto, and easy-to-access LATCH child-seat anchors make the Outlander Sport a smart purchase for everyone. According to industry research group Ipsos, 97% of small CUV owners who shopped for a Mitsubishi Outlander Sport purchased one<sup>4</sup>.

### **TRAIL EDITIONS**

Dedicated Trail Edition trims of Outlander and Outlander Sport will be available for the 2026 model year. Trail Edition debuted on Outlander in 2025 and on Outlander Sport in 2024. Featuring model-specific graphic and trim packages, dedicated wheels, dealer-available off-highway-focused tires and accessory kits and Thule roof-

racks and mounts, these Trail Editions build on Mitsubishi Motors' history of motorsport victories in the Dakar Rally and the World Rally Championship.

### **WARRANTY**

Every Mitsubishi Motors vehicle is delivered with peace of mind through the brand's 10-year/100,000-mile powertrain limited warranty. Also standard on every model is a five-year/60,000-mile limited warranty, a seven-year/100,000-mile corrosion/perforation warranty, five-year/unlimited-mile roadside assistance, and a 2-year/30,000-mile maintenance program<sup>5</sup>.

For more information on the full lineup of Mitsubishi vehicles, visit [MitsubishiCars.com](https://www.mitsubishi-cars.com).

For more information on MMNA, visit [media.mitsubishicars.com](https://media.mitsubishicars.com).

### **DISCLAIMERS**

1. "YAMAHA®" is a registered trademark of Yamaha Corporation.
2. Super All-Wheel Control (S-AWC) incorporates Active Yaw Control (AYC) to realize the AWC concept at a very high level. This Integrated Vehicle Dynamics Control System manages the driving forces and braking forces of the four wheels to help realize vehicle behavior that is faithful to the operation by the driver under a variety of driving conditions. S-AWC is not a substitute for safe and careful driving.
3. All-Wheel Control (AWC) is an Integrated Vehicle Dynamics Control System that manages the driving forces and braking forces of the four wheels to help realize vehicle behavior that is faithful to the operation by the driver under a variety of driving conditions. AWC is not a substitute for safe and careful driving.
4. Ipsos NVCS Oct. 2023-Sep. 2024 buyers.
5. Powertrain coverage terms are from original in-service date and applicable only to original owner. Subsequent owners receive balance of 5-year/60,000-mile New Vehicle Limited Warranty. Roadside Assistance timed from date vehicle is first sold or put into use, whichever is earlier. Certain assistance and vehicle uses excluded. Limited Maintenance includes three oil and filter changes, three tire rotations, three multi-point inspections, and one cabin filter change within specified time/mileage windows. Not transferable to subsequent owner. Parts or services not redeemed within specified windows are forfeited. Certain restrictions apply. See retailer for complete details. References to time/milage limitations are to whichever occurs first.