

**Technical Service Bulletin (TSB)**  
**Partial Rear Window Molding Detachment**

<b>REFERENCE:</b>	<b>TSB:</b> 23-024-25 REV. A <b>GROUP:</b> 23 - Body	<b>Date:</b>	August 1, 2028	<b>REVISION:</b>	23-024-25
<b>VEHICLES AFFECTED:</b>	<b>2024 (FG) FIAT 500e</b> This bulletin applies to vehicles built on or after January 15, 2024 (MDH 0115XX) and on or before September 03, 2024 (MDH 0903XX).			<b>MARKET APPLICABILITY:</b> <input checked="" type="checkbox"/> NA <input checked="" type="checkbox"/> MEA <input checked="" type="checkbox"/> SA <input type="checkbox"/> IAP <input checked="" type="checkbox"/> EE <input type="checkbox"/> CH  <b>NOTE:</b> This bulletin applies to the North America, South America, Middle East and Africa and Enlarged Europe markets.	
<b>CUSTOMER SYMPTOM:</b>	<b>Customers may experience the following:</b> <ul style="list-style-type: none"> <li>Noise/vibration from rear side window while driving.</li> </ul>				
<b>CAUSE:</b>	Rear window trim not fully sealed to the body at assembly				

This bulletin supersedes Technical Service Bulletin (TSB) 23-024-25, date of issue June 17, 2025, which should be removed from your files. All revisions include removal of a Sales Code not highlighted with **\*\*asterisks\*\*** and updated Spare Parts table.

This Technical Service Bulletin (TSB) has also been released as a Rapid Service Update (RSU) 25-111, date of issue June 17, 2025. All applicable RSU VINs have been loaded. To verify this RSU service action is applicable to the vehicle, use VIP or perform a VIN search in DealerCONNECT/Service Library. All repairs are reimbursable within the provisions of warranty.

**REPAIR SUMMARY:**

This bulletin involves inspecting the rear side window trim molding and possibly replacing the window trim molding if necessary.

**CLAIMS DATA:**

Labor Operation No:	Labor Description	Skill Category	Labor Time
23-30-30-96	Inspect Left and Right Quarter Glass Trim Molding (2 - Skilled)	6 - Electrical and Body Systems	0.2 Hrs.
23-30-30-97	Inspect and Replace Quarter Glass Trim Molding <b>(One Side)</b> (2 - Skilled)	6 - Electrical and Body Systems	0.4 Hrs.
23-30-30-98	Inspect and Replace Quarter Glass Trim Molding <b>(Both Sides)</b> (2 - Skilled)	6 - Electrical and Body Systems	0.5 Hrs.
Failure Code	ZY	Service Action	

**SPARE PARTS:**

Qty	Part No.	Description	Notes
**1 (AR)	68730931AA - MOPAR 52261019 - EMEA	Molding, Right	
1 (AR)	68730989AA - MOPAR 52261020 - EMEA	Molding, Left**	

**DIAGNOSIS:**

If a customer's VIN is listed in VIP or your RSU VIN list, perform the repair. If any vehicle not on the VIN list exhibits any of the symptom listed above in the customer symptom section, perform the Repair Procedure.

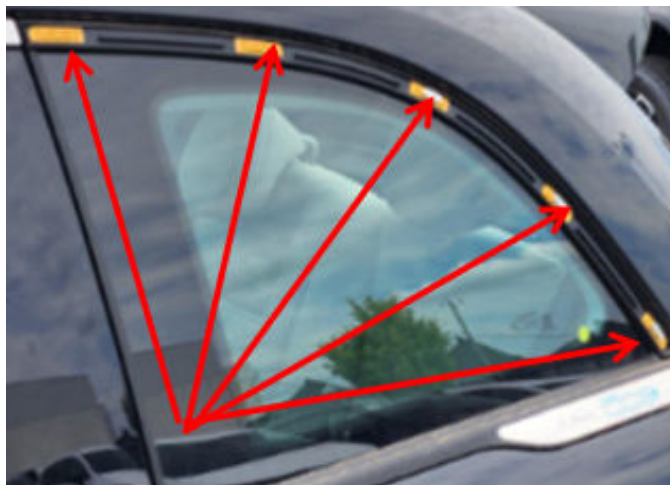
**SPECIAL TOOLS/EQUIPMENT:**

Description	Ref. No.	Notes
Trim Stick	C-4829A	Essential Tool
Gauges, Clearance Measurement, Non-Metallic	2022300230	Essential Tool

**REPAIR PROCEDURE:**

**NOTE: Repair Procedure is to be performed on both side windows.**

1. Inspect for correct attachment of the molding by pushing on the clip position shown in [Fig. 1](#).



**Fig. 1**

Area On Trim Molding To Inspect

2. Using a feeler gauge with a measurement of 1.19 mm (3/64 in.) check the upper contact area of the molding with the rubber gasket gap at the clip points. The gap must be less than 1.19 mm (3/64 in.).

**NOTE: Be sure to pull on the molding to ensure adherence to the frame.**

3. Does the gap exceed 1.19 mm (3/64 in.) or did the molding pull away from the mounting clips?
  - YES >>> Proceed to [Step 4](#).
  - NO >>> This bulletin does not apply. Use Inspection LOP (23-30-30-96). Perform further diagnostics.

**NOTE: Operation is the same for left or right side of the vehicle.**

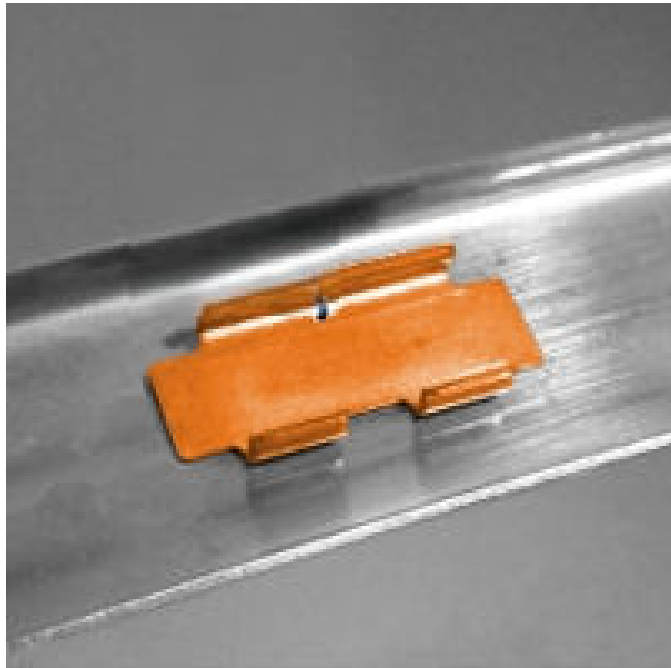
4. Open the front door.
5. Apply a double layer of paper tape to the body to protect the paint.
6. Using a trim stick, remove the trim from the seal clips and retaining clips then remove and discard the trim [Fig. 2](#).



**Fig. 2**

Trim Stick Locations For Removal Of Trim

7. Check that the retaining clips and the seal clips are not damaged [Fig. 3](#) and [Fig. 4](#).



**Fig. 3**  
Retaining Clip



**Fig. 4**  
Seal Clip

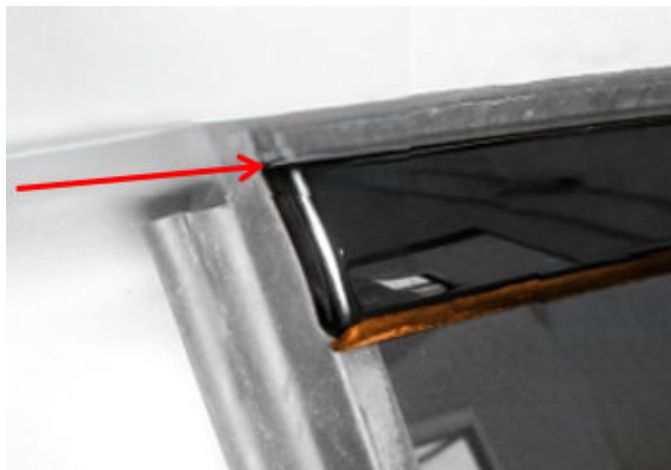
- Put the **NEW** trim in place by first lining up the trim retainer on the door pillar side to the corresponding seal clip [Fig. 5](#).



**Fig. 5**  
New Trim In Place

**NOTE: First lock the lower profile of the trim followed by the upper profile until it clicks into place.**

- Position the trim so that it is parallel with the upper lip profile of the seal [Fig. 6](#).



**Fig. 6**  
Trim In Position

- Secure the remaining retainers of the trim to the corresponding clips.

**NOTE:** Ensure the lower lip of the seal has not been pinched by the trim and remains positioned outside the trim **Fig. 7**.



**Fig. 7**  
Trim Installed

1 - Lower Lip Of The Seal  
2 - Trim

---

**NOTE:** For SA market only, after applying this TSB, it is not necessary to send DID-I or DID-A.

**POLICY:**

Reimbursable within the provisions of the warranty.

*This bulletin is supplied as technical information only and is not an authorization for repair. No part of this publication may be reproduced, stored in a retrieval system, or transmitted, in any form or by any means, electronic, mechanical, photocopying, or otherwise, without written permission of FCA US LLC.*