

REV	DESC.	DATE	BY	X	X	X	XX/XX/XX	X	XX/XX/XX	X	USED ON
X	X	XX/XX/XX	X	X	X	X	XX/XX/XX	X	XX/XX/XX	X	BERKSHIRE
X	X	XX/XX/XX	X	X	X	X	XX/XX/XX	X	XX/XX/XX	X	390BH
X	X	XX/XX/XX	X	X	X	X	XX/XX/XX	X	XX/XX/XX	X	X
X	X	XX/XX/XX	X	X	X	X	XX/XX/XX	X	XX/XX/XX	X	X
X	X	XX/XX/XX	X	X	X	X	XX/XX/XX	X	XX/XX/XX	X	X
X	X	XX/XX/XX	X	X	X	X	XX/XX/XX	X	XX/XX/XX	X	X
X	X	XX/XX/XX	X	X	X	X	XX/XX/XX	X	XX/XX/XX	X	X

UNLESS OTHERWISE SPECIFIED:
 DIMENSIONS ARE IN INCHES
 TOLERANCES
 FRACTIONS ± 1/8 ANGLAR ± 0.5°
 DECIMALS .XX ± .05, .XXX ± .010

DRAWN JT DATE 4/28/10
 CHECKED

FOREST RIVER
 TSUNAMI, CHARLESTON DIESEL DIV.

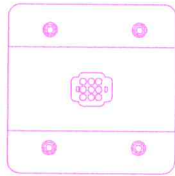
TITLE **HARNES, CHASSIS/FLOOR**

SIZE 1	CLASS CODE 0610	DWG NO. 500102	REV <input type="checkbox"/>
DO NOT SCALE		SHEET 8 OF 8	

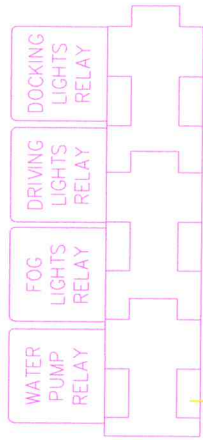
3-23-12
 PAK

FUSEBLOCK/FUSES/CHASSIS

Ø1/8
TYP.

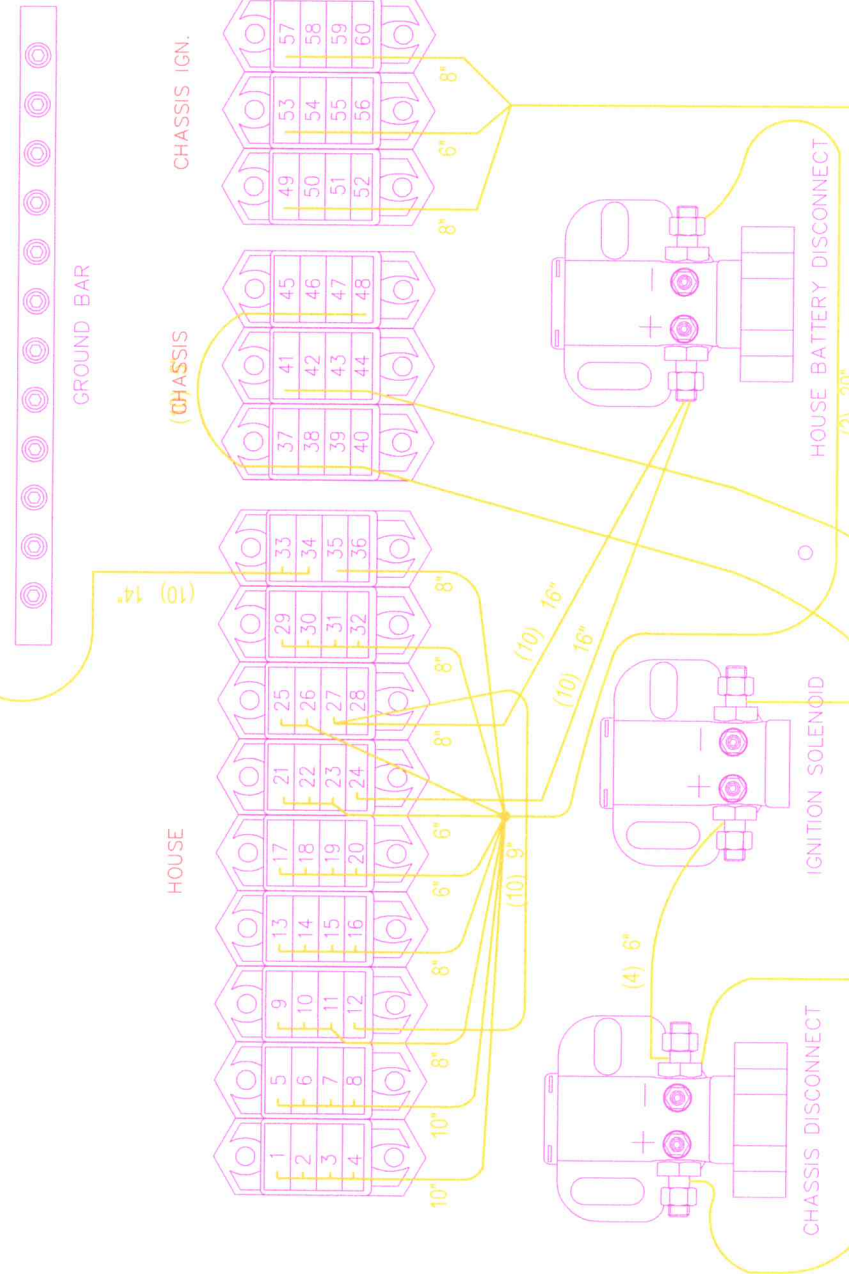


CORNERING LIGHT CONTROL



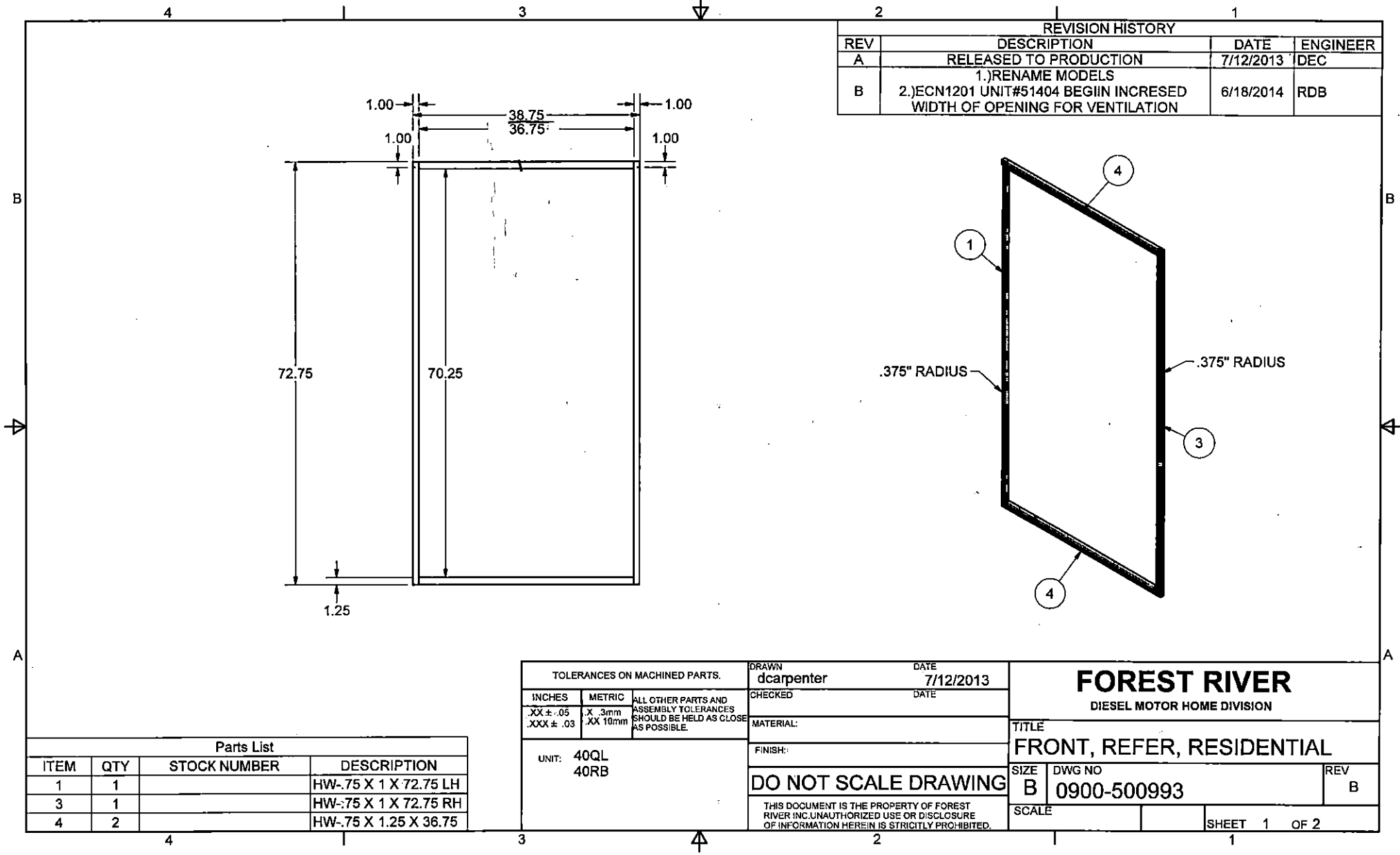
FUSE BOX
FREIGHTLINER
CHASSIS

FUSE BOX
FREIGHTLINER
CHASSIS



CIRCUIT FUSE DESCRIPTION

- 1.-20A-CEILING CENTER
- 2.-20A-DRIVER CEILING
- 3.-20A-PASSENGER CEILING
- 4.-20A-ENTRY SWITCHES
- 5.-20A-DRIVER SLIDE ROOM O/H
- 6.-20A-PASSENGER SIDE O/H
- 7.-20A-BEDROOM POWER
- 8.-20A-BATHROOM POWER
- 9.-20A-COMPARTMENT LIGHTS
- 10.-15A-FRONT FURNACE A/C
- 11.-15A-REAR FURNACE A/C
- 12.-15A-REFER/EXTERIOR FREEZER
- 13.-15A-INTERIOR/EXTERIOR RECEPT
- 14.-40ACB-TOILET
- 15.-5A-DUMP VALVES
- 16.-15ACB POWER CORD REEL
- 17.-20A-O.H. POWER/TV/BOOSTER/SAT
- 18.-20A-DASH POWER POINT #1 UPPER
- 19.-20A-DASH POWER POINT #2 LOWER
- 20.-15A-DASH RADIO SW
- 21.-15A-SPOTLIGHT
- 22.-10A-WAP LIGHTS
- 23.-10A-EMERGENCY START
- 24.-30ACB POWER STEP
- 25.-20ACB-SLIDEOUT SWITCH POWER
- 26.-15A-COMMAND CENTER POWER
- 27.-3A-LP DETECTOR/RANGE IGNITER
- 28.-3A-(B+) AUTO GEN START & EMS
- 29.-25A-WATER PUMP RELAY PWR-RELAY
- 30.-20A-FRESH WATER TANK HEATER
- 31.-20A-BLACK/GRAY TANK HEATERS
- 32.-20A-DINETTE LIGHTS
- 33.-15A-WATER PUMP #1 FROM RELAY
- 34.-15A-WATER PUMP #2 FROM RELAY
- 35.-15A BED HEADBOARD
- 36.-15A-AWINGS
- 37.-15A-DASH STEREO MEMORY
- 38.-5A-AIR HORN SOLENOID
- 39.-15A-KE LESS ENTRY
- 40.-20ACB-POWER DRIVER/PASS SEAT
- 41.-3A-LP DETECTOR
- 42.-15A-LEVELLING JACKS
- 43.-50A-DASH HEAT-A/C
- 44.----
- 45.-15A-SPARE TO DRIVER CONSOLE
- 46.-15ACB BAGGAGE DOOR LOCKS
- 47.----
- 48.----
- 49.-15A-FOG/DRIVING LIGHTS
- 50.-15A DOCKING LIGHT SWITCH/RELAY
- 51.-10A-A/C VACUUM PUMP
- 52.-3A-STEP OVERRIDE
- 53.-15A-O.H. DASH FAN
- 54.-5A-TV LOCKOUT RELAY
- 55.-10A-MIRRORS/VISORS
- 56.-3A-OVERRIDE TO AUTO GEN START
- 57.-5A-CORNERING LIGHT MODULE
- 58.-15A-SPARE TO DRIVER CONSOLE
- 59.15A-SPARE TO ENTRY
- 60.----



REVISION HISTORY			
REV	DESCRIPTION	DATE	ENGINEER
A	RELEASED TO PRODUCTION	7/12/2013	DEC
B	1.)RENAME MODELS 2.)ECN1201 UNIT#51404 BEGIIN INCREASED WIDTH OF OPENING FOR VENTILATION	6/18/2014	RDB

Parts List			
ITEM	QTY	STOCK NUMBER	DESCRIPTION
1	1		HW-.75 X 1 X 72.75 LH
3	1		HW-.75 X 1 X 72.75 RH
4	2		HW-.75 X 1.25 X 36.75

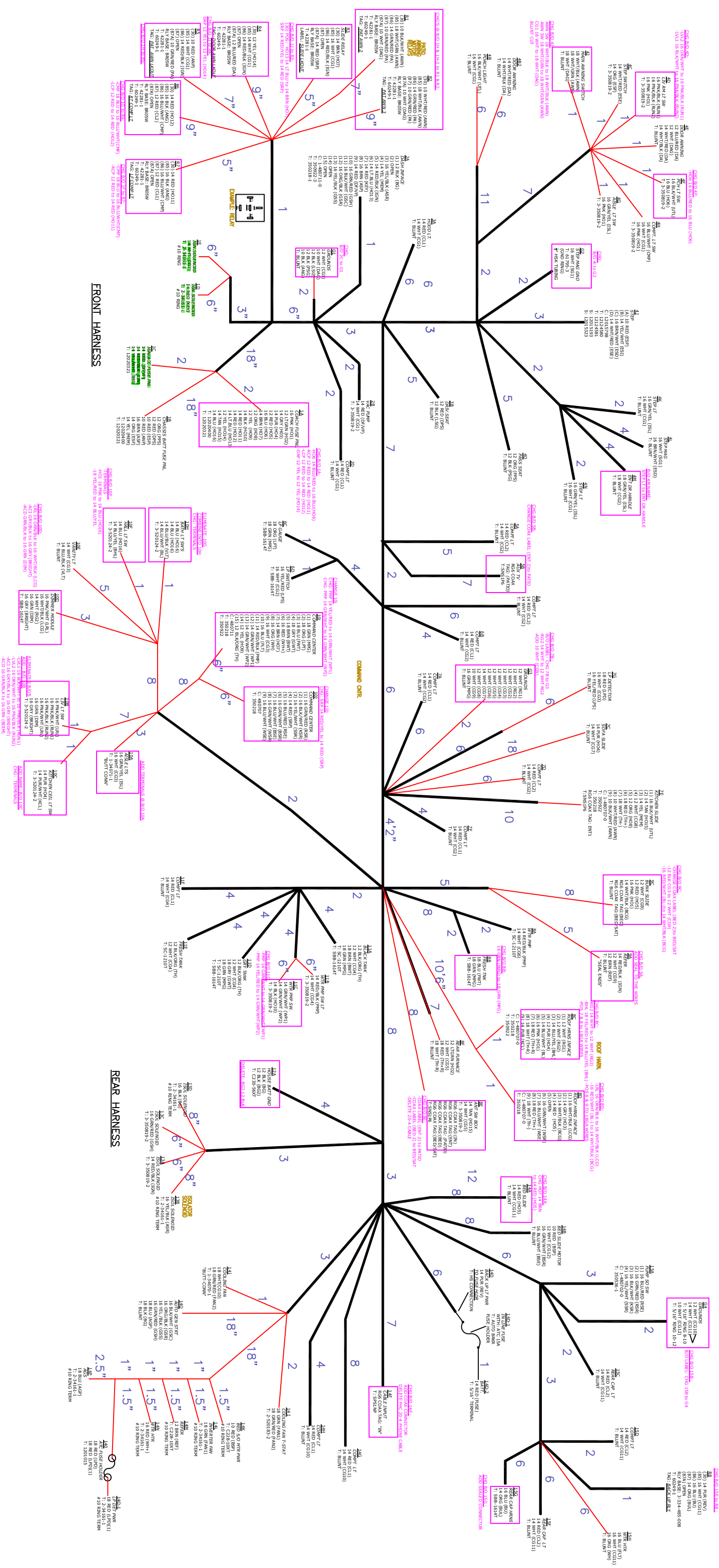
TOLERANCES ON MACHINED PARTS.		
INCHES	METRIC	ALL OTHER PARTS AND ASSEMBLY TOLERANCES SHOULD BE HELD AS CLOSE AS POSSIBLE.
.XX ± .05	.X .3mm	
.XXX ± .03	.XX 10mm	

UNIT: 40QL
40RB

DRAWN dcarpenter	DATE 7/12/2013
CHECKED	DATE
MATERIAL:	
FINISH:	
DO NOT SCALE DRAWING	
THIS DOCUMENT IS THE PROPERTY OF FOREST RIVER INC.UNAUTHORIZED USE OR DISCLOSURE OF INFORMATION HEREIN IS STRICTLY PROHIBITED.	

FOREST RIVER		
DIESEL MOTOR HOME DIVISION		
TITLE FRONT, REFER, RESIDENTIAL		
SIZE B	DWG NO 0900-500993	REV B
SCALE	SHEET 1 OF 2	

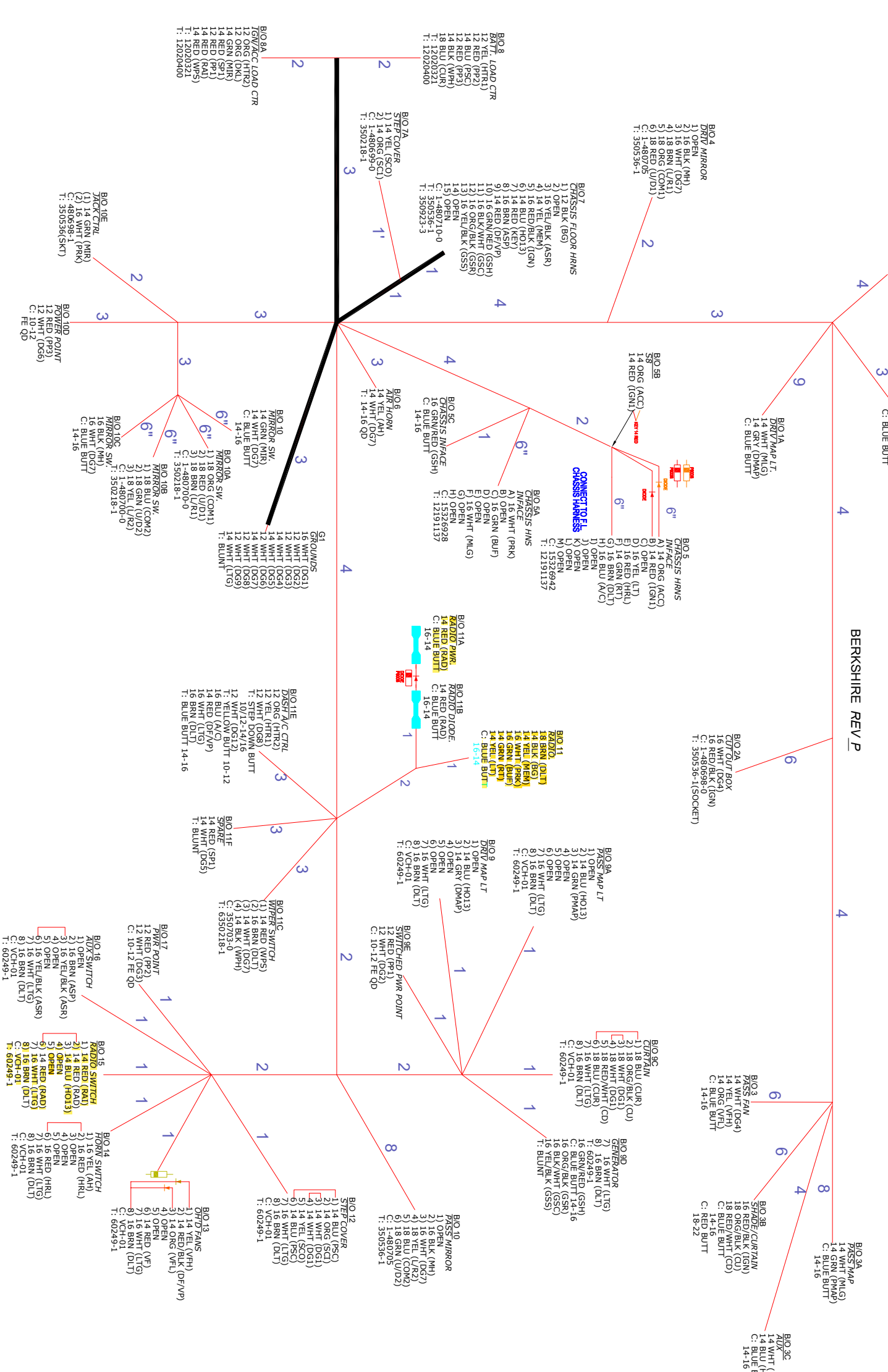
REV	DESCRIPTION	DATE	AUTHOR
A	2016MY REPLACES 0610-500153	11/13/14	BBM



- NOTE:**
1. ALL WIRE TO BE GXL OR EQUIVALENT.
 2. ALL SPLICES TO BE COVERED WITH APPROPRIATE HEAT SHRINK.
 3. "WHITE" LOOM SIGNIFIES LOW TEMP TUBING REQUIREMENT.
 4. "BLUE" LOOM SIGNIFIES HIGH TEMP TUBING REQUIREMENT.
 5. HARNESS LENGTHS ARE IN FEET UNLESS NOTED WITH QUOTATION FOR INCHES.
 7. TAG HARNESS WITH MODEL AND PART NUMBER.

TOLERANCES ON MACHINED PARTS.		DRAWN: B.MAIN		DATE: 11/13/14	
INCHES	METRIC	CHECKED:		DATE:	
XXX ± .05	.X .3mm	ALL OTHER PARTS AND ASSEMBLY TOLERANCES SHOULD BE HELD AS CLOSE AS POSSIBLE.			
UNIT: BERKSHIRE XL		MATERIAL: GXL OR EQUIV.		TITLE: FOREST RIVER DIESEL MOTOR HOME DIVISION	
FINISH: CHS/FRNS		DO NOT SCALE DRAWING		HARNESS, CHASSIS	
SCALE:		SIZE: DWG/PRINT NUMBER: 0610-500212		REV: A	
SHEETS: 1/3					

REV	ECN #	DESCRIPTION	DATE	ENG.
N	1304	CHANGES AT DASH A/C B/O'S TO ACCOMMODATE ELECTRIC ACTUATORS & ADD BERKSHIRE XLT	4/21/2015	BBM
O	1304	ADD BERKSHIRE XLT	5/5/2015	BBM
P	1421	REMOVE BERKSHIRE XL & XLT FROM USAGE & REMOVE SHADE SW B/O 9B, CHG B/O 7 & CHG B/O 3B	2/18/2016	BBM



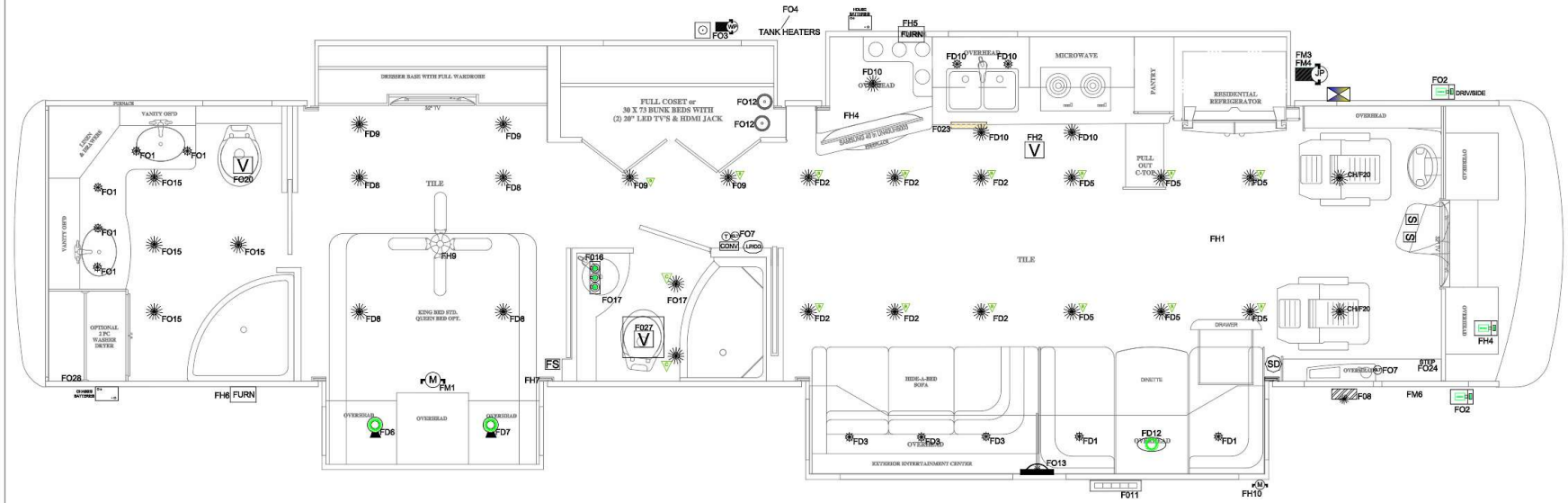
TOLERANCES ON MACHINED PARTS.		DATE	DRAWN:	
INCHES	METRIC	2/20/15	B.MAIN	
XXX ± .05	.X .3mm	CHECKED		
XXX ± .03	.XX 10mm	DATE		
ALL OTHER PARTS AND ASSEMBLY TOLERANCES SHOULD BE HELD AS CLOSE AS POSSIBLE.		MATERIAL: GXL		
UNIT:		FINISH: HRNS		
BERKSHIRE		HARNES, DASH		
DO NOT SCALE DRAWING		SIZE DWG/PRINT NUMBER: 0610-500100		
THIS DOCUMENT IS THE PROPERTY OF FOREST RIVER INC. UNAUTHORIZED USE OR DISCLOSURE OF INFORMATION HEREIN IS STRICTLY PROHIBITED.		SCALE: SHEETS: 1/1		
FOREST RIVER DIESEL MOTOR HOME DIVISION		REV: P		

HOUSE FUSE IDENTIFICATION TABLE											
FUSE IDENT.	CIRCUIT DESCRIPTION	FUSE SIZE	FUSE IDENT.	CIRCUIT DESCRIPTION	FUSE SIZE	FUSE IDENT.	CIRCUIT DESCRIPTION	FUSE SIZE	FUSE IDENT.	CIRCUIT DESCRIPTION	FUSE SIZE
FD1	DN. READ LTB	3A	FD13	SOFA DECOR LT	5A	FD13	WALL LT 1	3A	FD27	BATH FAN 2	5A
FD2	LIVRM GLG LTB	7.5A	FD1	BATH VANITY LTB	15A	FD14	WALL LT 2	3A	FD28	WATER HEATER	7.5ACB
FD3	BOFA READ LTB 1	3A	FD2	CARGO BAY LTB	15A	FD16	BATH CLG LTB	3A	FD39	AWNING PWR	5A
FD4	BOFA READ LTB 2	3A	FD3	WATER PUMP	15A	FD16	BATH VAL LTB 2	7.5A	FH1	AC CONTROLS	15A
FD5	KITCHEN CLG LTB	7.5A	FD4	TANK HEAT PAB	25A	FD17	BATH CLG LTB 2	3A	FH2	KITCHEN VENT	5A
FD6	BED READ LT 1	3A	FD6	LAV. CLG LTB	3A	FD18	BEDRMACC LTB	3A	FH3	PSHYD FRT SW	10A
FD7	BED READ LT 2	3A	FD7	ABLE LTB	5A	FD19	LIVACCNT LTB	5A	FH4	ANT. BOOST	15A
FD8	BED CLG LTB	7.5A	FD8	PORCH LT	5A	FD30	BATH FAN 1	5A	FH6	FURNACE 1	20A
FD9	DRESSER LTB	5A	FD9	HALL LTB	3A	FD31	EXTACCNT LTB	3A	FH6	FURNACE 2	20A
FD10	KITCHEN GH LTB	3A	FD10	PATIO LT 2	2A	FD32	BATHACCNT LTB	7.5A	FH7	BED USB PORTS	7.5A
FD11	BOFA DECOR LT	5A	FD11	PATIO LT	2A	FD33	KITACCNT LTB	7.5A	FH8	DASH RADIO	15A
FD12	DN. DECOR LT	7.5A	FD12	CLOSET LTB	3A	FD34	STEP PWR	3A	FH9	BED GLO FAN	7.5A

ONLY REPLACE CORRECT SIZE FUSE IDENTIFIED ON PANEL

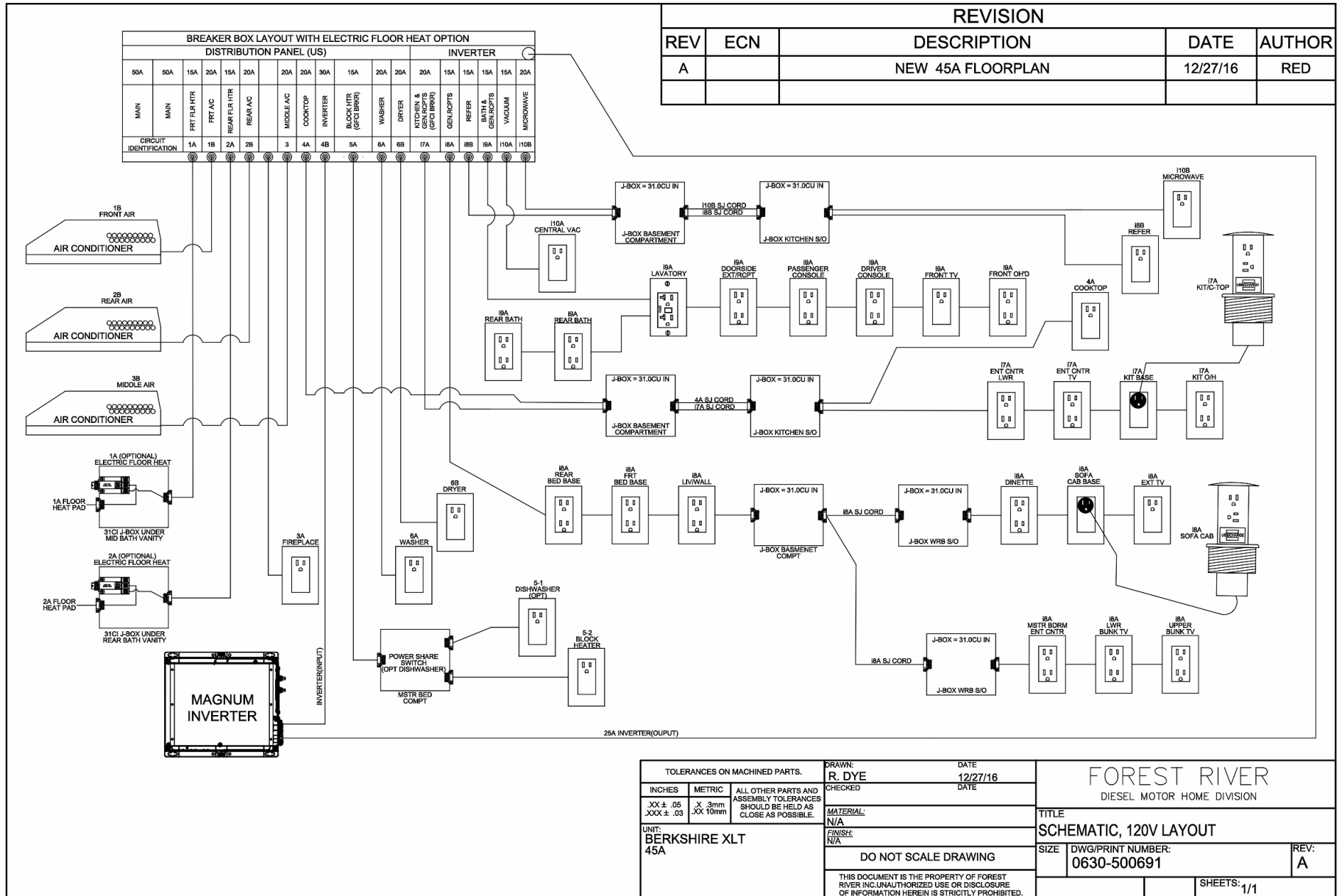
REVISION				
REV	ECN	DESCRIPTION	DATE	AUTHOR
A		NEW FLOORPLAN	1/10/2017	RED
B		Change Hall Lt Circuit/Swap Kit & LR Clg Lts	6/23/2017	RED
C	NA	Update Frt Bath Clg Lt Layout	9/18/2017	RED

FILENAME/USAGE: 0620-500835 REV. C, BERKSHIRE XLT, 45A/----



12V LIGHTING SWITCH LEGEND							
DESCRIPTION	SYMBOL	DESCRIPTION	SYMBOL	DESCRIPTION	SYMBOL	DESCRIPTION	SYMBOL
3" PUCK LT (LED)	*	VANITY LT	⊙	FURNACE	FURN	S/O MOTOR 12V	⊕
4.5" PUCK LT (LED)	⊙	ACCENT LT	ACCENT	THERMOSTAT	⊕	JACK PUMP	⊕
WALL SCONCE	⊕	LED ROPE LTG	—	12V VENT	V	WATER PUMP	⊕
WARD/COMPT LT	⊕	LP/CO DETECTOR	⊕	12 SWITCH	S	CABLE JACK	⊕
PORCH LT	⊕	LED BUNK LT	⊕	FAN SW	FS	BATTERY	⊕
READING LT	⊕	SMOKE DETECTOR	SD	COURTESY LT	⊕		
DECO LIGHT	⊕	FUSE PANEL	⊕				
LED PATIO LIGHT	⊕	CONV/PANEL	⊕				

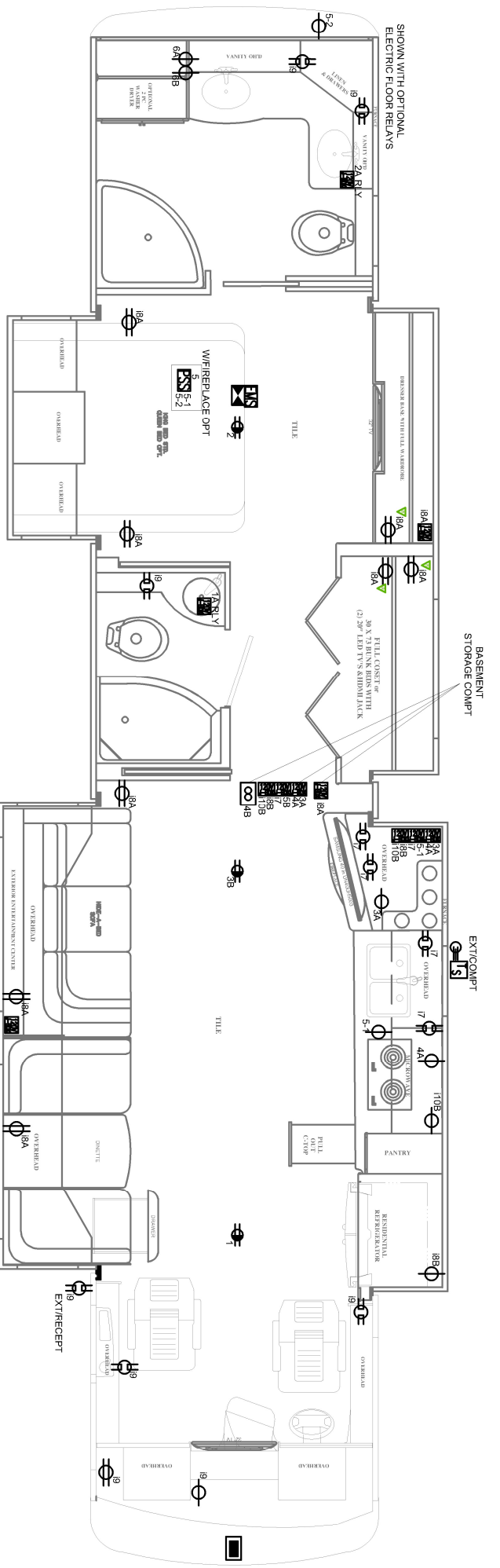
TOLERANCES ON MACHINED PARTS.		DRAWN: R. DYE	DATE 9/18/17	FOREST RIVER DIESEL MOTOR HOME DIVISION TITLE 12V HOUSE DIST , LAYOUT
INCHES .XX ± .05 .XXX ± .03	METRIC X .3mm XX 10mm	ALL OTHER PARTS AND ASSEMBLY TOLERANCES SHOULD BE HELD AS CLOSE AS POSSIBLE. MODEL(S): BERKSHIRE XLT FLOORPLAN(S): 45A		
APPLICATION: Electrical PRINT LOCATION: SYSTEMS				SIZE DWG/PRINT NUMBER: 0620-500835.dwg
DO NOT SCALE DRAWING THIS DOCUMENT IS THE PROPERTY OF FOREST RIVER INC UNAUTHORIZED USE OR DISCLOSURE OF INFORMATION HEREIN IS STRICTLY PROHIBITED.				REV: C SHEETS: 1 / 1



REVISION			DATE	AUTHOR
REV	ECN	DESCRIPTION		
A		NEW 45 FLOORPLAN	12/21/2016	RED
B		CORRECT WDRB S/O RECEIPT LOCATION	8/4/2017	RED

DISTRIBUTION PANEL (US)					INVERTER										
CIRCUIT IDENTIFICATION	1	2	3A	3B	4A	4B	5	6A	6B	7	8A	8B	9	10A	10B
MAIN	FRT A/C	REAR A/C	FIREPLACE	MIDDLE A/C	COOKTOP	INVERTER	BLOCK HTR / DISHWASHER (GFCI BRKR)	WASHER	DRYER	KITCHEN & GEN.RCPTS (GFCI BRKR)	GEN.RCPTS	REFER	BATH & GEN.RCPTS (GFCI BRKR)	VACUUM	MICROWAVE

DISTRIBUTION PANEL (US)					INVERTER												
CIRCUIT IDENTIFICATION	1A	1B	2A	2B	3A	3B	4A	4B	5	6A	6B	7	8A	8B	9	10A	10B
MAIN	FRT FLR HTR	FRT A/C	REAR FLR HTR	REAR A/C	FIREPLACE	MIDDLE A/C	COOKTOP	INVERTER	BLOCK HTR / DISHWASHER (GFCI BRKR)	WASHER	DRYER	KITCHEN & GEN.RCPTS (GFCI BRKR)	GEN.RCPTS	REFER	BATH & GEN.RCPTS (GFCI BRKR)	VACUUM	MICROWAVE



DESCRIPTION	SYMBOL	DESCRIPTION	SYMBOL	DESCRIPTION	SYMBOL
120V DUPLEX RCPT	[Symbol]	DISTR/ PNL	[Symbol]	COOKTOP	[Symbol]
120V GFCI RCPT	[Symbol]	WATER HEATER	[Symbol]	VACUUM	[Symbol]
120V SINGLE RCPT	[Symbol]	POWER COORD.	[Symbol]	FREEZER	[Symbol]
TRANSFER SWITCH	[Symbol]	AIR COND.	[Symbol]	GENERATOR	[Symbol]
INVERTER/CONV.	[Symbol]	MICROWAVE	[Symbol]	ENERGY MGMT SYS.	[Symbol]
JUNCTION BOX	[Symbol]	SLIDE/RCPT	[Symbol]	120V SHARE SWITCH	[Symbol]

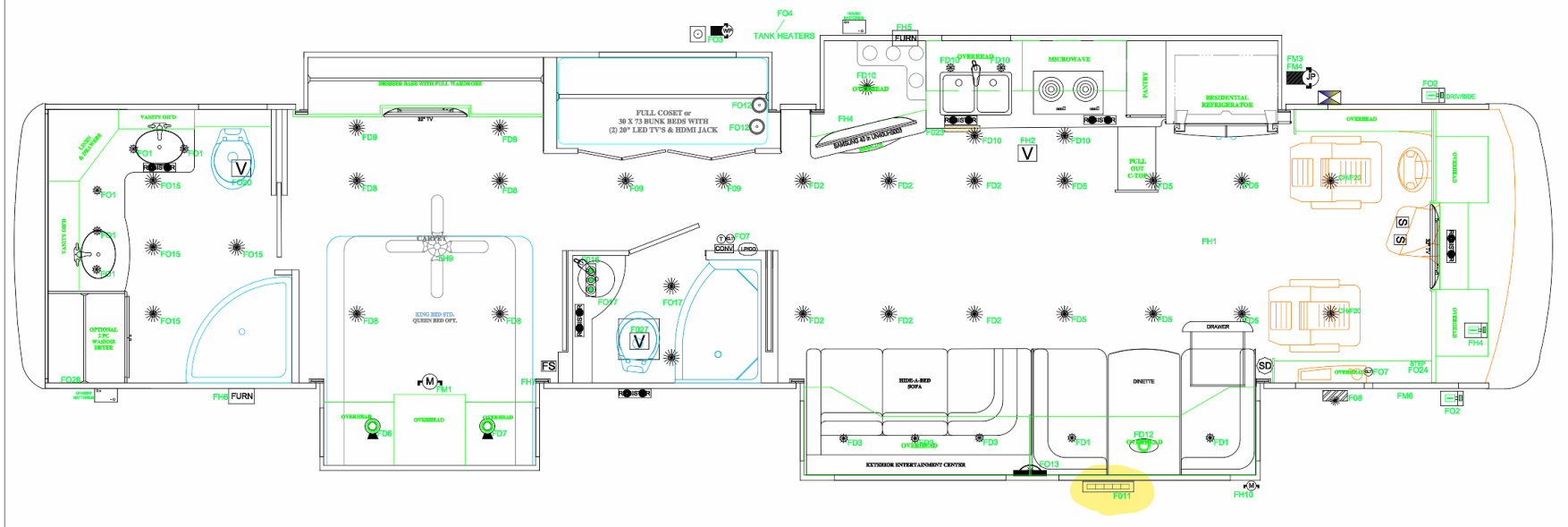
TOLERANCES ON MACHINED PARTS		DATE	
INCHES	METRIC	8/4/17	
XX ± .05	X .3mm		
XXX ± .03	XX .10mm		
DRAWN: R. DYE		DATE	
MATERIAL			
ALL OTHER PARTS AND ASSEMBLY TOLERANCES SHOULD BE HELD AS FOLLOWS:			
APPLICATOR:			
ELECTRICAL			
SYSTEMS			
DO NOT SCALE DRAWING			
THIS DOCUMENT IS THE PROPERTY OF FOREST RIVER INC. UNAUTHORIZED USE OR DISCLOSURE OF INFORMATION HEREIN IS STRICTLY PROHIBITED			
TITLE: FOREST RIVER DIESEL MOTOR HOME DIVISION		DATE: 8/4/17	
SIZE: DWG/PRINT NUMBER: 0620-500834.dwg		REV: B	
SHEETS: 1 / 1			

FILENAME/USAGE: 0620-500882 REV. C, BERKSHIRE XLT, 45A/----

HOUSE FUSE IDENTIFICATION TABLE														
FUSE IDENT.	CIRCUIT DESCRIPTION	FUSE SIZE	FUSE IDENT.	CIRCUIT DESCRIPTION	FUSE SIZE	FUSE IDENT.	CIRCUIT DESCRIPTION	FUSE SIZE	FUSE IDENT.	CIRCUIT DESCRIPTION	FUSE SIZE	FUSE IDENT.	CIRCUIT DESCRIPTION	FUSE SIZE
FD1	DN READ LTB	3A	FD13	SOFA DECOR LT	5A	FD13	WALL LT 1	3A	FD27	BATH FAN 2	5A	FH10	PATIO AWNING	15ACB
FD2	LIVRM CLG LTB	7.5A	FD1	BATH VANITY LTB	15A	FD14	WALL LT 2	3A	FD28	WATER HEATER	7.5ACB	FH11	PATIO AWN. (OPT)	15ACB
FD3	SOFA READ LTB	3A	FD2	CARGO BAY LTB	15A	FD16	BATH CLG LTB	3A	FD39	AWNING PWR	6A	FM1	BED BLUZE	25ACB
FD4	SOFA READ LTB 2	3A	FD3	WATER PUMP	15A	FD16	BATH VAN. LTB 2	7.5A	FH1	A/C CONTROLS	15A	FM2	PIRELED FRT SW	10A
FD6	KITCHEN CLG LTB	7.5A	FD4	TANK HEAT PADS	25A	FD17	BATH CLG LTB 2	3A	FH2	KITCHEN VENT	5A	FM3	PSHYD FRT SW	10A
FD6	BED READ LT 1	3A	FD6	LAV. CLG LTB	3A	FD18	BEDRMACC. LTB	3A	FH3	EXTRADIO	15A	FM3	DRSHYD FRT SW	10A
FD7	BED READ LT 2	3A	FD7	ABLE LTB	5A	FD19	LIVACCENT LTB	5A	FH4	ANT. BOOST	15A	FM4	WARDROBE SW	7.5A
FD8	BED CLG LTB	7.5A	FD8	PORCH LT	5A	FD20	BATH FAN 1	5A	FH6	FURNACE 1	20A	FM5	DSBLEC FRT SW	10A
FD9	DRESSER LTB	5A	FD9	HALL LTB	3A	FD21	EXTACCENT LTB	3A	FH6	FURNACE 2	20A	FM6	DOOR AWNING	15ACB
FD10	KITCHEN OH LTB	3A	FD10	PATIO LT 2	2A	FD22	BATHACCENT LTB	7.5A	FH7	BED USB PORTS	7.5A	FM7	TV LIFT	7.5A
FD11	SOFA DECOR LT	5A	FD11	PATIO LT	2A	FD23	NTACCENT LTB	7.5A	FH8	DASH RADIO	15A			
FD12	DN DECOR LT	7.5A	FD12	CLOSET LTB	3A	FD24	STEP PWR	3A	FH9	BED CLD FAN	7.5A			

ONLY REPLACE CORRECT SIZE FUSE IDENTIFIED ON PANEL.

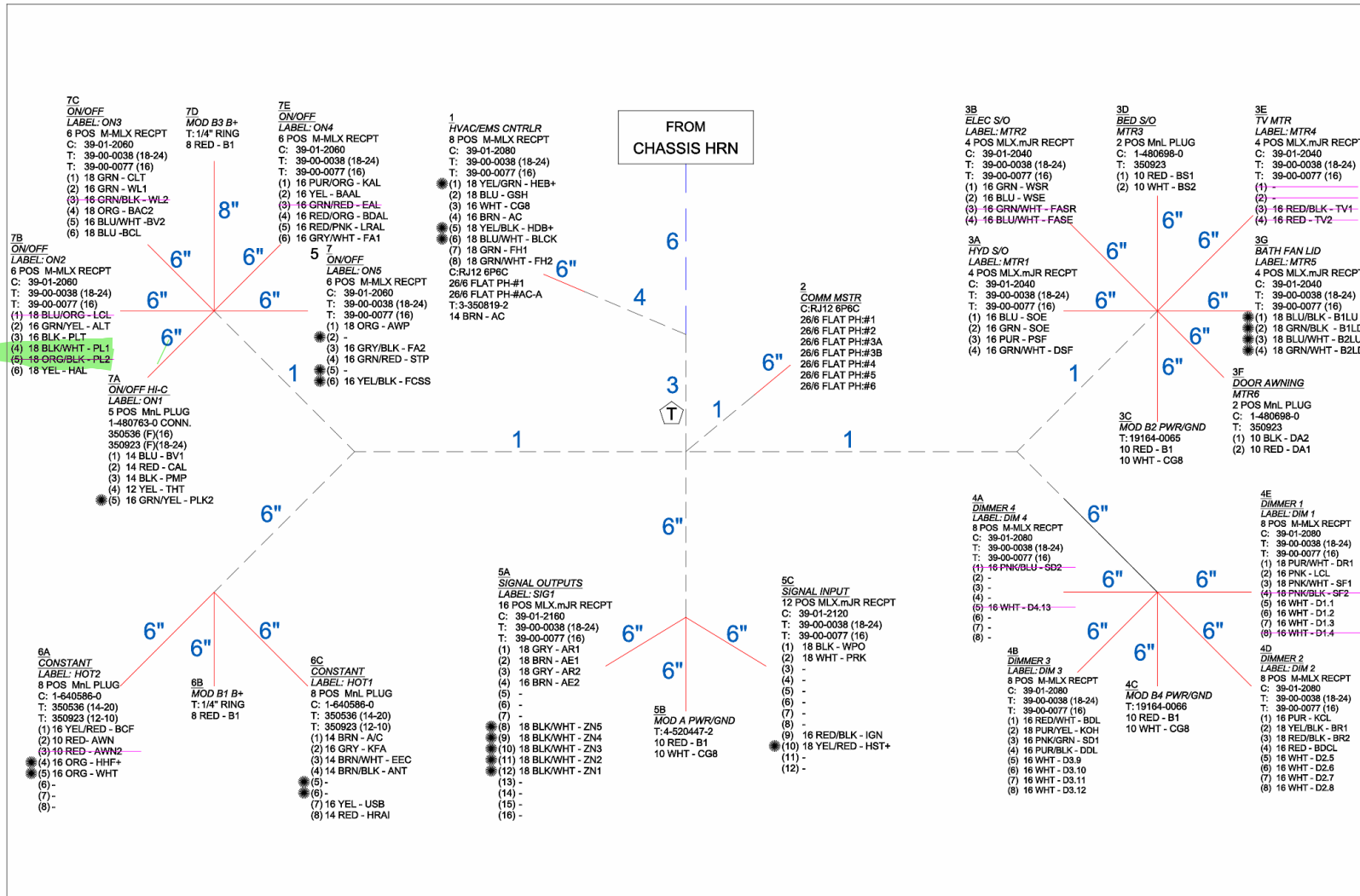
REVISION				
REV	ECN	DESCRIPTION	DATE	AUTHOR
A		UPDATED 2019MY	12/19/2017	RED



12V LIGHTING SWITCH LEGEND							
DESCRIPTION	SYMBOL	DESCRIPTION	SYMBOL	DESCRIPTION	SYMBOL	DESCRIPTION	SYMBOL
3" PUCK LT (LED)	*	VANITY LT	⊙	FURNACE	FURN	S/O MOTOR 12V	⊕
4.5" PUCK LT (LED)	⊙	ACCENT LT	ACCENT	THERMOSTAT	T	JACK PUMP	⊕
WALL SCONCE	⊕	LED ROPE LTG	—	12V VENT	V	WATER PUMP	⊕
WARD/COMPT LT	⊕	LP/CO DETECTOR	LP/CO	12 SWITCH	S	CABLE JACK	⊕
PORCH LT	⊕	LED BUNK LT	⊕	HEAT REGISTER	⊕	BATTERY	⊕
READING LT	⊕	SMOKE DETECTOR	SD	FAN SW	FS		
DECO LIGHT	⊕	FUSE PANEL	⊕	COURTESY LT	⊕		
LED PATIO LIGHT	⊕	CONV/PANEL	⊕				

TOLERANCES ON MACHINED PARTS.		DRAWN:	DATE
INCHES	METRIC	R. DYE	12/19/17
.XX ± .05	.X .3mm	MATERIAL:	
.XXX ± .03	.XX 10mm	CODE	
ALL OTHER PARTS AND ASSEMBLY TOLERANCES SHOULD BE HELD AS CLOSE AS POSSIBLE.		APPLICATION:	
MODEL(S): BERKSHIRE XLT		Electrical	
FLOORPLAN(S): 45A		PRINT LOCATION:	
		SYSTEMS	
DO NOT SCALE DRAWING			
THIS DOCUMENT IS THE PROPERTY OF FOREST RIVER INC. UNAUTHORIZED USE OR DISCLOSURE OF INFORMATION HEREIN IS STRICTLY PROHIBITED.			

FOREST RIVER DIESEL MOTOR HOME DIVISION		
TITLE 12V HOUSE DIST , LAYOUT		
SIZE	DWG/PRINT NUMBER: 0620-500882.dwg	REV: C
SHEETS: 1 / 1		

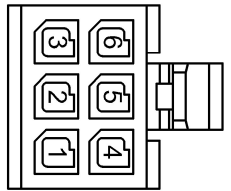


TOLERANCES ON MACHINED PARTS.			DRAWN: R.DYE	DATE: 10/9/18	FOREST RIVER DIESEL MOTOR HOME DIVISION
INCHES .XX ± .05	METRIC .X 3mm	ALL OTHER PARTS AND ASSEMBLY TOLERANCES SHOULD BE HELD AS CLOSE AS POSSIBLE.	MATERIAL: GXL or Equiv.	APPLICATION: Electrical	
MODEL(S): BERKSHIRE XLT			FLOORPLAN(S): 45A, ---		TITLE: HRN, CHASSIS , Model
			DO NOT SCALE DRAWING		SIZE: DWG/PRINT NUMBER: 0610-500374.dwg
			THIS DOCUMENT IS THE PROPERTY OF FOREST RIVER INC. UNAUTHORIZED USE OR DISCLOSURE OF INFORMATION HEREIN IS STRICTLY PROHIBITED.		REV: E
					SHEETS: _ / 4

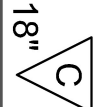
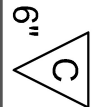
8 7 6 5 4 3 2 1

MATE TO
HVAC MODULE

WIRE ENTRY VIEW



- 2 HVAC MODULE**
 6-WAY Mini-Fit Jr RECEPTACLE
 39-01-2060 MALE CONN.
 0039000077 TERM.(F)(16)
 0039000038 TERM.(F)(18-24)
 (1) 18 GRN (AFH)
 (2) OPEN
 (3) 18 GRAY (AFL)
 (4) 18 YEL/RED (CMPREQ)
 (5) 18 WHT/BLK (AHT)
 (6) 18 BLK (GND)



MATE TO
AC CNTLR

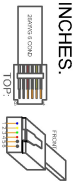
- 1 AC CONTROL**
 6 POS MATE-N-LOC PLUG
 1-480704-0 MALE CONN.
 350536 TERM.(F)(14-20)
 (1) 18 GRN (AFH)
 (2) OPEN
 (3) 18 GRAY (AFL)
 (4) 18 YEL (CMPON)
 (5) 18 WHT/BLK (AHT)
 (6) 18 BLK (GND)



3 CONDENSOR FIN T-STAT
 T:2-520183-2
 18 YEL (CMPON)
 18 YEL/RED (CMPREQ)

USAGE:
 1 HARNISS PER AC W/HEAT PUMP UNIT
 LEGACY, BERKSHIRE, BERKSHIRE XL & BERKSHIRE XLT

- NOTE:
 1. ALL WIRE TO BE GXL OR EQUIVILENT.
 2. ALL SPLICES TO BE COVERED WITH APPROPRIATE HEAT SHRINK
 3. "WHITE" LOOM SIGNIFIES LOW TEMP TUBING REQUIREMENT.
 4. "BLUE" LOOM SIGNIFIES HIGH TEMP TUBING REQUIREMENT.
 5. HARNISS LENGTHS ARE IN FEET UNLESS NOTED WITH QUOTATION FOR INCHES.
 7. TAG HARNISS WITH MODEL AND PART NUMBER.
 8. 2% FLAT PHONE POSITIONS (1) BLU(2)YEL(3)GRN(4)RED(5)BLK(6)WHT



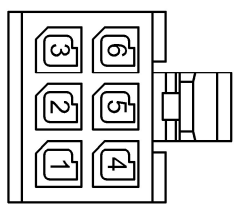
TOLERANCES ON MACHINED PARTS		DRAWING		DATE	5/22/19	
INCHES	METRIC	R. DYE	MATERIAL	FOREST RIVER		
XXX ± .05	X .3mm		GXL or EQUIV.	DIESEL MOTOR HOME DIVISION		
XXX ± .03	X .1mm		APPLICATION	AC & M. PLEX HRN WHP		
ALL	FLOORPLANS		IDENTICAL	SIZE	DWG/PRINT NUMBER:	REV:
	ALL.....		SYSTEMS	0610-500336.dwg		C
			DO NOT SCALE DRAWING	SHEETS 2 / 3		
THIS DOCUMENT IS THE PROPERTY OF FOREST RIVER INC. UNAUTHORIZED USE OR DISCLOSURE OF INFORMATION HEREIN IS STRICTLY PROHIBITED						

8 7 6 5 4 3 2 1

REVISION			
REV	ECN	DESCRIPTION	AUTHOR
A		NEW FOR MULTIPLEX HVAC	RED
B		REVISE CONTROL TERMINATION	RED
C	1677	ADD AC W/HEAT PUMP HRN	RED

MATE TO
HVAC MODULE

WIRE ENTRY VIEW



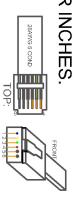
- 2
HVAC MODULE
6-WAY Mini-Fit Jr RECEPTACLE
39-01-2060 MALE CONN.
0039000077 TERM.(F)(16)
0039000038 TERM.(F)(18-24)
- (1) 18 GRN (AFH)
 - (2) OPEN
 - (3) 18 GRAY (AFL)
 - (4) 18 YEL (CMP)
 - (5) 18 WHT/BLK (AHT)
 - (6) 18 BLK (GND)

MATE TO
AC CNTRL UNIT

- 1A
AC CNTRLR
6 WIRE BLUNT
3-350820-2 TERM.(F)(14-16)
- (1) 18 GRN - AFH >> GH
 - (2) OPEN
 - (3) 18 GRAY - AFL >> GL
 - (4) 18 YEL - CMP >> Y
 - (5) 18 WHT/BLK - AHT >> W
 - (6) 18 BLK - GND >> B-

USAGE:
1 HARNESS PER AC ONLY UNIT
LEGACY, BERKSHIRE, BERKSHIRE XL & BERKSHIRE XLT

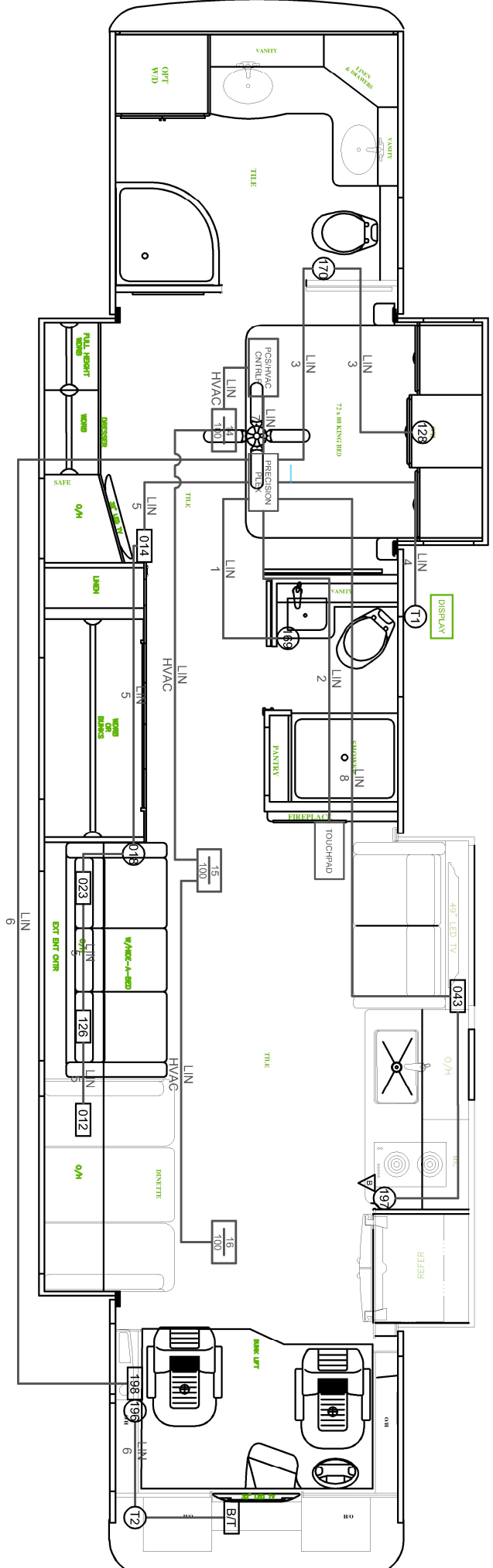
- NOTE:
1. ALL WIRE TO BE GXL OR EQUIVALENT.
 2. ALL SPLICES TO BE COVERED WITH APPROPRIATE HEAT SHRINK.
 3. "WHITE" LOOM SIGNIFIES LOW TEMP TUBING REQUIREMENT.
 4. "BLUE" LOOM SIGNIFIES HIGH TEMP TUBING REQUIREMENT.
 5. HARNESS LENGTHS ARE IN FEET UNLESS NOTED WITH QUOTATION FOR INCHES.
 7. TAG HARNESS WITH MODEL AND PART NUMBER.
 8. 2% FLAT PHONE POSITIONS (1) BLU(2)YEL(3)GRN(4)RED(5)BLK(6)WHT



TOLERANCES ON MACHINED PARTS		DRAWING	
INCHES: .0015	METRIC: .05mm	R. DYE	DATE: 5/22/19
ALL OTHER PARTS AND ASSEMBLY TOLERANCES SHOULD BE HELD AS CLOSE AS POSSIBLE		MATERIAL: GXL or Equiv.	
FLOORPLANS: ALL		APPLICATION: Electrical	
SYSTEMS: ALL		PRINT/LOCATION: SYSTEMS	
DO NOT SCALE DRAWING			
THIS DOCUMENT IS THE PROPERTY OF FOREST RIVER INC. UNAUTHORIZED USE OR DISCLOSURE OF INFORMATION HEREIN IS STRICTLY PROHIBITED			
TITLE: FOREST RIVER DIESEL MOTOR HOME DIVISION		DWG/PRINT NUMBER: AC & M.PLEX Mach 10	
SIZE: 1/8"		SHEETS: 1 / 3	
REV: C			

8 7 6 5 4 3 2 1

NOTE: Heat Pump Lockoutfeature will disable the Heat Pump function when T2 measures below 45°



REVISION		DATE	AUTHOR
REV	ECN	DESCRIPTION	
A		NEW FLOORPLAN	RED
B		Move -197 Switch to side of Refer Cabinet	RED

(2020) MULTI PLEX PART LIST (XLT)		
QTY	DESCRIPTION (STD)	PreciCh PIN
1	7" TOUCH SCREEN	00-10054-005
1	PRECISION PLEX MASTER PANEL	00-10073-000
1	50 AMP PNL W/FGS	00-10023-370
3	110V RELAY (1 BRK/HZ/2 F/H/H)	00-10025-200
-	LN BUS SPLITTER	12-20038-100
3	TANK PROBE MODULE	TBD
1	TANK BAY DISPLAY	00-10011-200
3	HVAC MODULE (H SIG) 1AC	00-10086-000
7	THM NUGGET 11HVAC/1AMB/1TNK	00-10075-000
1	BLEUTOOTH MODULE	00-10053-000
SWITCHES		
1	DINETTE SW PNL	00-10066-012
-	DR AWNING SW PNL	00-10066-013
1	BDRM WALL SW PNL	00-10066-014
-	LAV SW PNL	00-10066-015

(2020) MULTI PLEX PART LIST (XLT)		
QTY	DESCRIPTION (STD)	PreciCh PIN
-	2 BTN AVNW SW PNL (OPT 2ND AVNW)	00-10066-016
1	HALL WALL SW PNL	00-10066-017
1	KITCHEN SW PNL 2	00-10066-018
1	TV LIFT SW PNL	00-10066-019
-	BATH 2ND DR SW	00-10066-023
-	CLST L/S/B/LK HTR	00-10066-039
-	S/O SOFA (2 Button Replaces -126)	00-10066-040
-	PASS CONSOLE PNL	00-10066-042
1	S/O SOFA 2 (2 Button -141 w/o Wall L/U)	00-10066-043
1	SOFA O/H SW PNL	00-10067-126
-	4 BTN AVNW SW PNL	00-10067-131
-	2ND SOFA SW PNL	00-10067-141
-	3RD SOFA SW PNL	00-10067-143
-	SHARED BATH SW PNL (37A ONLY)	00-10067-187
1	BED O/H/D SW PNL	00-10068A128

(2020) MULTI PLEX PART LIST (XLT)		
QTY	DESCRIPTION (STD)	PreciCh PIN
1	SOFA SW PNL (L/R ACCENT)	00-10066-159
1	BATH 1 SW PNL (W/THRM)	00-10066-169
1	BATH 2 SW PNL (W/THRM)	00-10066-170
1	BATH 2ND WALL SW (6 BTN)	00-10066-185
1	KIT WALL SW PNL (Replaces 125)	00-10071-197
1	6 BTN AVNW SW PNL (2X3) (Replaces 127)	00-10072-196
1	ENTRY SW PNL (2X3) (Replaces 130)	00-10072-198
MISCELLANEOUS		
-	PCI Battery Isolation Manager (160Amp)	00-10041-200
1	PCI Battery Isolation Manager (225Amp)	00-10041-252
1	PCI Battery Disconnect (180 Amp)	00-10041-100
-	PCI Battery Disconnect (225 Amp)	00-10041-150
1	110V SHARE SW (OPT)	00-10031-000

TOLERANCES ON MACHINED PARTS		
INCHES	METRIC	ALL OTHER PARTS AND ASSEMBLY TOLERANCES SHOULD BE HEAD AS FOLLOWS:
XXX ± .05	X 3mm	
XXX ± .03	XX 10mm	
	0.039	AS POSSIBLE

MATERIAL		
APPLICATION:	Edrical	
PAINT LOCATION:		
SYSTEMS:		

DRAWN:		DATE
R. DYE		8/29/19

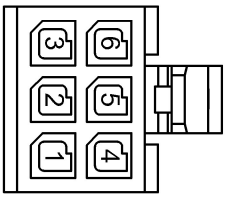
TITLE	
FOREST RIVER DIESEL MOTOR HOME DIVISION	

DO NOT SCALE DRAWING	
SIZE	DWG/PRINT NUMBER:
	0620-500924.dwg

THIS DOCUMENT IS THE PROPERTY OF FOREST RIVER INC. UNLESS INDICATED OTHERWISE. NO INFORMATION HEREIN IS TO BE DISSEMINATED OR REPRODUCED WITHOUT THE WRITTEN PERMISSION OF FOREST RIVER INC.	
SHEET'S	1 / 2

REVISION			
REV	ECN	DESCRIPTION	AUTHOR
A		NEW FOR MULTIPLEX HVAC	RED
B		REVISE CONTROL TERMINATION	RED
C	1677	ADD AC WHEAT PUMP HRN	RED

MATE TO
HVAC MODULE



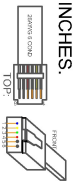
- 2
HVAC MODULE
6-WAY Mini-Fit Jr RECEPTACLE
39-01-2060 MALE CONN.
0039000077 TERM. (F)(16)
0039000038 TERM. (F)(18-24)
(1) 18 GRN (AFH)
(2) OPEN
(3) 18 GRAY (AFL)
(4) 18 YEL (CMP)
(5) 18 WHT/BLK (AHT)
(6) 18 BLK (GND)

MATE TO
AC CNTRLR

- 1
AC CONTROL
6 POS. MATE-N-LOC PLUG
1-480704-0 MALE CONN.
350536 TERM. (F)(14-20)
(1) 18 GRN (AFH)
(2) OPEN
(3) 18 GRAY (AFL)
(4) 18 YEL (CMP)
(5) 18 WHT/BLK (AHT)
(6) 18 BLK (GND)

USAGE:
1 HARNESS PER AC ONLY UNIT
LEGACY, BERKSHIRE, BERKSHIRE XL & BERKSHIRE XLT

- NOTE:
1. ALL WIRE TO BE GXL OR EQUIVALENT.
2. ALL SPLICES TO BE COVERED WITH APPROPRIATE HEAT SHRINK.
3. "WHITE" LOOM SIGNIFIES LOW TEMP TUBING REQUIREMENT.
4. "BLUE" LOOM SIGNIFIES HIGH TEMP TUBING REQUIREMENT.
5. HARNESS LENGTHS ARE IN FEET UNLESS NOTED WITH QUOTATION FOR INCHES.
6. TAG HARNESS WITH MODEL AND PART NUMBER.
7. 2% FLAT PHONE POSITIONS (1) BLU(2)YEL(3)GRN(4)RED(5)BLK(6)WHT



TOLERANCES ON MACHINED PARTS		DRAWING	
INCHES: .001	METRIC: .025mm	R. DYE	DATE: 5/22/19
ALL OTHER PARTS AND ASSEMBLY TOLERANCES SHOULD BE HELD AS CLOSE AS POSSIBLE		MATERIAL: GXL or Equiv.	
MODEL(S): ALL	FLOORPLAN(S): ALL	APPLICATION: Electrical	
DO NOT SCALE DRAWING		PRINT LOCATION: SYSTEMS	
THIS DOCUMENT IS THE PROPERTY OF FOREST RIVER INC. UNAUTHORIZED USE OR DISCLOSURE OF INFORMATION HEREIN IS STRICTLY PROHIBITED		TITLE: FOREST RIVER DIESEL MOTOR HOME DIVISION	
SIZE: DWG/PRINT NUMBER: 0610-500336.dwg		AC & M.PLEX STD HRN	
SHEETS: 1 / 3		REV: C	

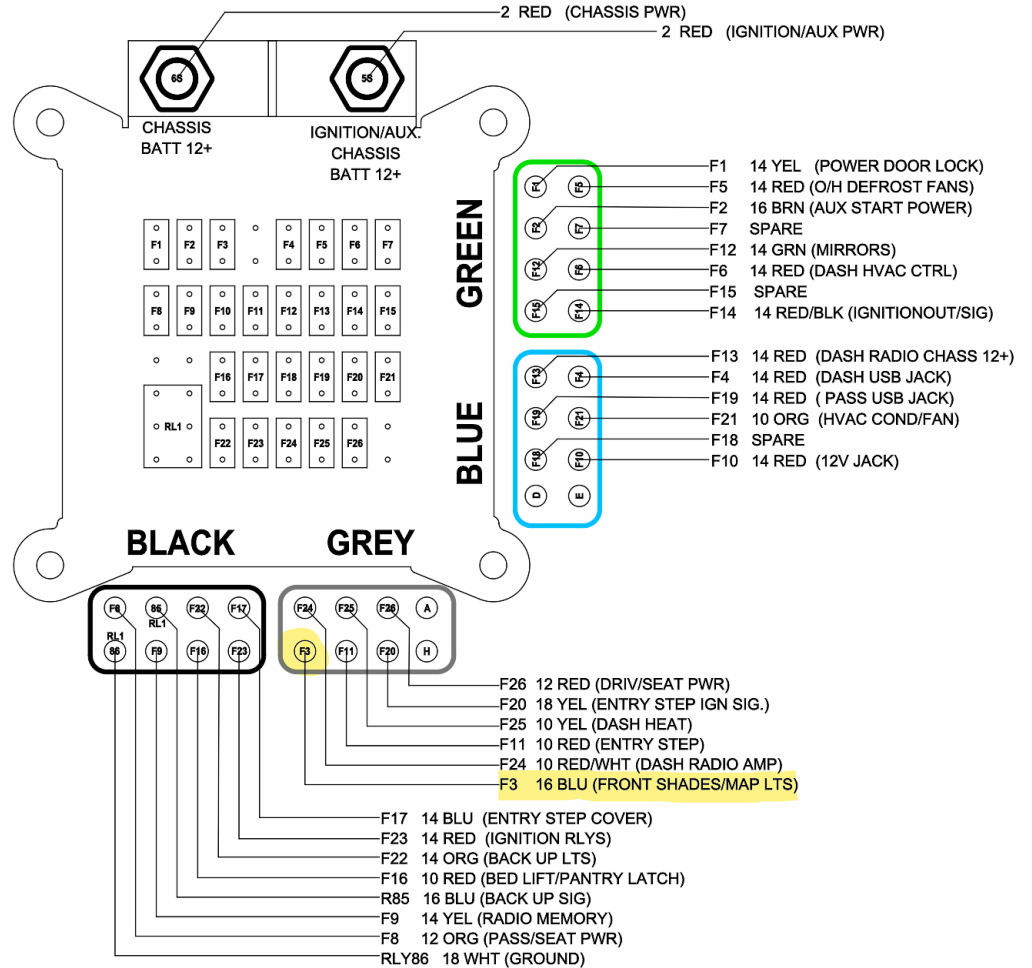
8 7 6 5 4 3 2 1

CHASSIS ELECTRICAL FUSE PANEL					
LOC.	CHASSIS BATTERY	FUSE/BREAKER	LOC.	IGNITION/ACCESSORY	FUSE/BREAKER
F1	POWER DOOR LOCKS	15ACB	F4	DASH USB JACK	15A
F2	AUX/START	5A	F5	DEFROST FANS	10A
F3	FRT.SHADES/MAP LTS	5ACB	F6	DASH HVAC CTRL	10A
F8	PASSENGER SEAT	20ACB	F7	SPARE	15ACB
F9	RADIO MEMORY	10A	F12	MIRRORS	7.5A
F10	12V POWER JACK 1	15A	F13	DASH RADIO	15A
F11	ENTRANCE STEP	25A	F14	IGNITION OUT/SIG	10A
F16	BED LIFT / PNTRY LCK	20ACB	F15	SPARE	15A
F17	ENTRY STEP COVER	15A	F18	SPARE	15A
F22	BACK UP LIGHTS	15A	F19	PASS USB JACK	15A
F23	IGNITION (RELAYS)	15A	F20	STEP IGN SIG	5A
F24	RADIO AMP	15A	F21	HVAC COND/FAN	25A
F25	DASH HVAC HEAT	25A			
F26	DRIVER SEAT	20ACB			
RLY1	BACK-UP LTS RELAY				

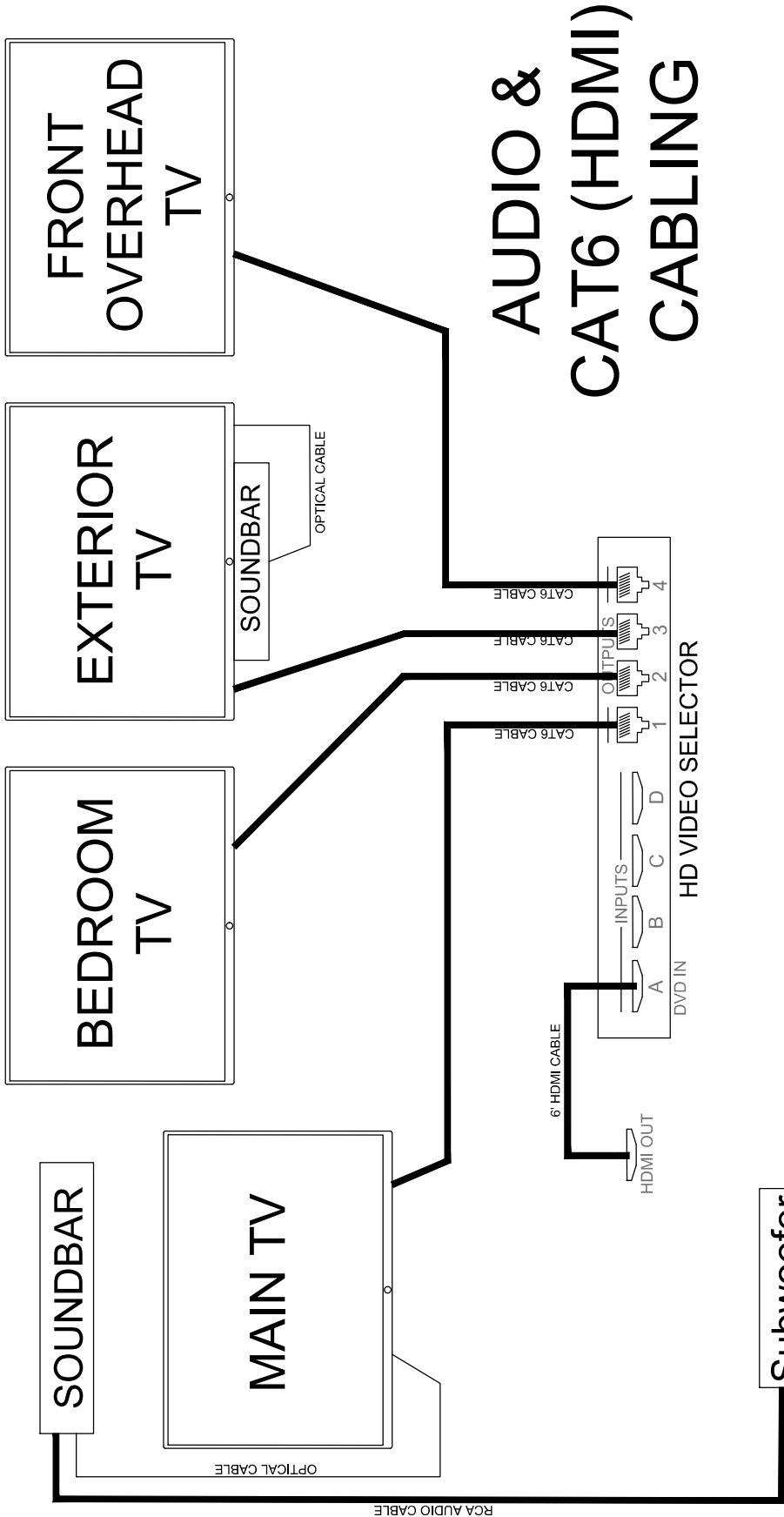
DO NOT EXCEED LABELED FUSE SIZE

NOTE:
BERKSHIRE XL & XLT DO NOT USE (F1)WIPER RLY'S. (F7)DASH WIPER SW (NOT REQUIRED WITH SMART WHEEL)
BERKSHIRE & LEGACY, (F8) PASSENGER SEAT BREAKER IS WIRE PREP ONLY
LEGACY DOES NOT USE (F17) ENTRY STEP COVER

LABEL PART#: 0620-500954 REV B



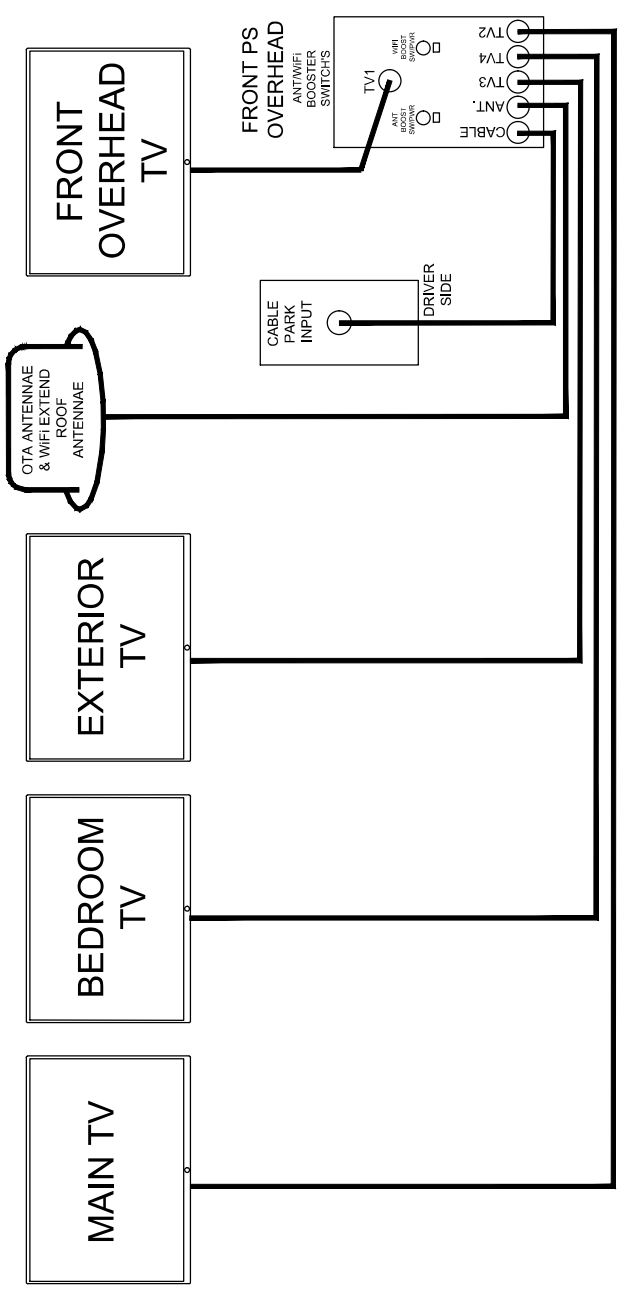
TOLERANCES ON MACHINED PARTS.			DRAWN: B.MAIN	DATE: 4/2/21	FOREST RIVER DIESEL MOTOR HOME DIVISION
INCHES	METRIC	ALL OTHER PARTS AND ASSEMBLY TOLERANCES SHOULD BE HELD AS CLOSE AS POSSIBLE.	CHECKED:	DATE:	
.XX ± .05 .XXX ± .03	.X .3mm .XX 10mm				TITLE: FRONT ELECT COMPARTMENT FUSE PANEL
UNIT: ALL MODELS			USAGE OF THE INFORMATION CONTAINED ON THIS DOCUMENT IS CONTINGENT ON THE AGREEMENT TO THE CONDITIONS STATED ON PAGE 1		SIZE: DWG/PRINT NUMBER: 0620-500954
					REV: B
					SHEETS: 8/9



AUDIO & CAT6 (HDMI) CABLING

Subwoofer
 INSTALLED IN
 BERKSHIRE XLT &
 CHARLESTON
 MODELS ONLY

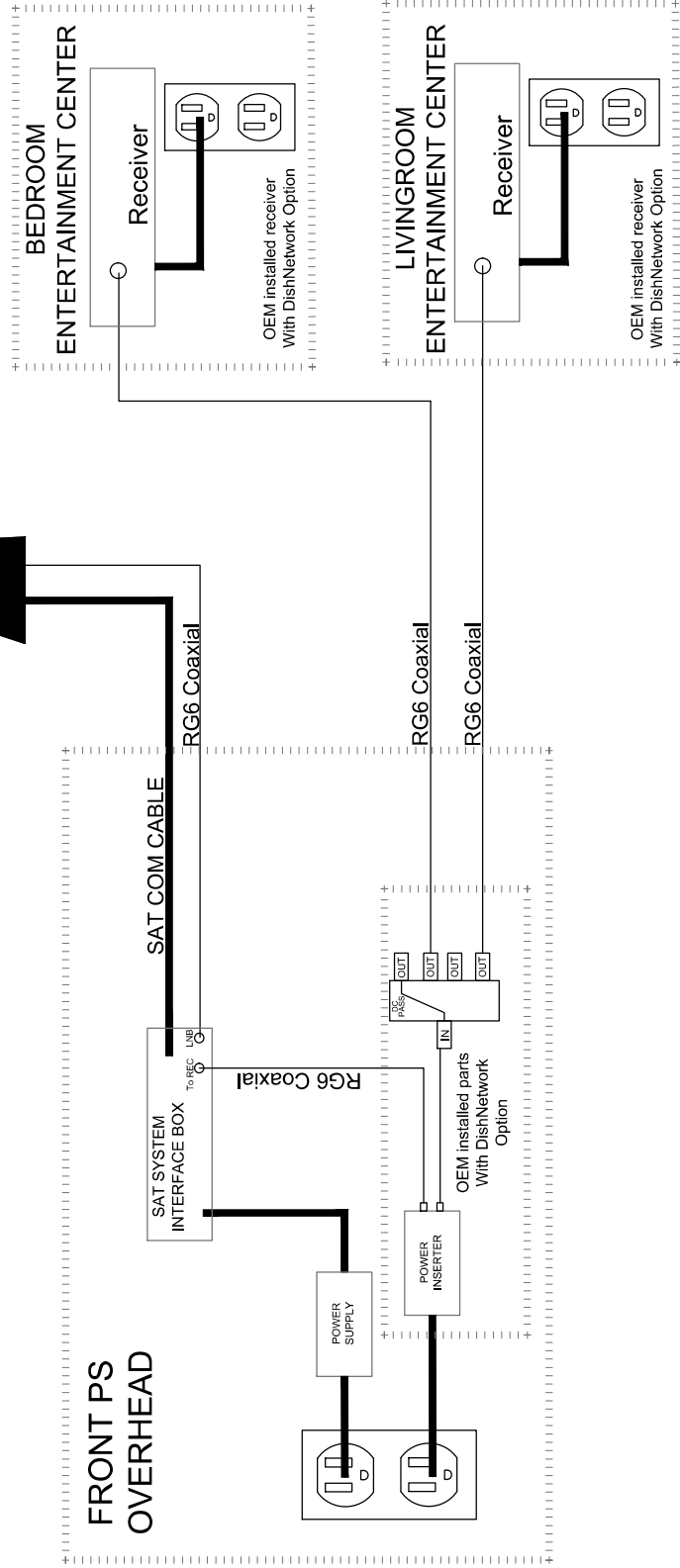
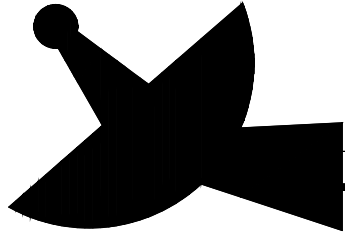
TOLERANCES ON MACHINED PARTS:		DATE	10/27/22
INCHES	METRIC	DRAWN	BMAIN
.XX ± .05	.XX ± .3mm	MATERIAL	VIDEO
.XXX ± .03	.XX ± .10mm	APPL. CATION:	Electrical
MODEL(S):	FLOOR(PLANS):	PRINT LOCATION:	Vault
ALL	ALL,,	DO NOT SCALE DRAWING	
USAGE OF THE INFORMATION CONTAINED ON THIS DOCUMENT IS CONTINGENT ON AGREEMENT TO THE CONDITIONS STATED ON PAGE 1.			
TITLE		FOREST RIVER INC	
DWG/PRINT NUMBER:		DIESEL MOTOR HOME DIVISION	
0630-500716			
REV:		PAGE:	
B		3 / 5	



RG6 COAXIAL CABLING

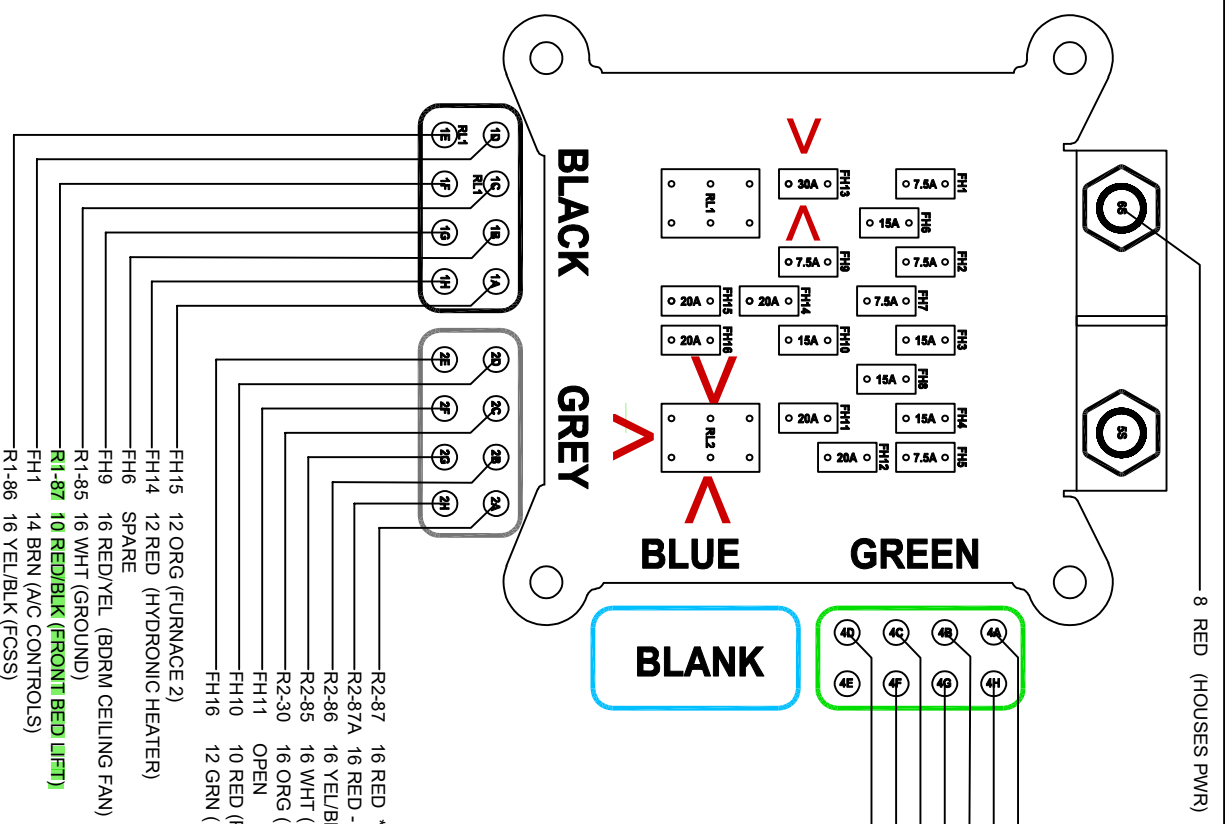
TOLERANCES ON MACHINED PARTS:		DRAWN: BMAIN	DATE: 10/27/22	FOREST RIVER INC DIESEL MOTOR HOME DIVISION	
INCHES	ALL OTHER PARTS AND ALL DIMENSIONS SHOULD BE HELD AS CLOSE AS POSSIBLE	MATERIAL: VIDEO	PRINT LOCATION: VAULT	TITLE: COAXIAL	
METRIC	.XX ± .05 .XX ± .03	APPLICABLE: Electrical	DO NOT SCALE DRAWING	DWG/PRINT NUMBER: 0630-500716	
MODEL(S):	FLOORPLAN(S): ALL,,	USAGE OF THE INFORMATION CONTAINED ON THIS DOCUMENT IS CONTINGENT ON AGREEMENT TO THE CONDITIONS STATED ON PAGE 1.			
				REV: B	PAGE: 4 / 5

SATELLITE CABLING



TOLERANCES ON MACHINED PARTS:		DRAWN:	DATE:	FOREST RIVER INC	
INCHES	METRIC	BMAIN	10/27/22	DIESEL MOTOR HOME DIVISION	
ALL OTHER PARTS AND MATERIALS SHOULD BE HELD AS CLOSE AS POSSIBLE	ALL	MATERIAL: Electrical	FRUIT LOCATION: VAULT	TITLE: SATELLITE	
XX ± .05 X .3mm .XXX ± .03	ALL	APPLICATOR:	DO NOT SCALE DRAWING	DWG/PRINT NUMBER: 0630-500716	
MODEL(S):	FLOORPLAN(S):	USAGE OF THE INFORMATION CONTAINED ON THIS DOCUMENT IS CONTINGENT ON AGREEMENT TO THE CONDITIONS STATED ON PAGE 1.			
ALL	ALL, ---, ---, ---	REV: B			
				PAGE:	5 / 5

LOCATED: FRONT DRIVERSIDE ELECTRICAL COMPARTMENT



HOUSE BATTERY FUSE DESCRIPTIONS

FUSE	SIZE	DESCRIPTION
FH1	7.5A	A/C-CTRLS
FH2	7.5A	KITCHEN-FAN
FH3	15A	EXT/RADIO/BUNK-TVS
FH4	15A	TV/ANT/WIFI-BOOSTER
FH5	7.5A	TRUMA-WATER/HTR
FH6	15A	PWR/WINDOW-SHADES
FH7	7.5A	BED-USB/PORTS
FH8	15A	DASH-RADIO(HOUSE)
FH9	7.5A	BEDROOM-CLG/FAN
FH10	15ACB	PATIO-AWNING
FH11	20A	SPARE
FH12	20ACB	CORD/HOSE-REELS
FH13	30A	COCKPIT-BEDLIFT
FH14	20A	HYDRONIC-HEATER
FH15	15A	FURNACE-2
FH16	15A	FURNACE-1/POWER-TRAY
RLY-1	RLY-2	COCKPIT-BEDLIFT

- R2-87 16 RED *BATT +*(FAL)
- R2-87A 16 RED -(IGNITION SIG)
- R2-86 16 YEL/BLK (FCSS)
- R2-85 16 WHT (GROUND)
- R2-30 16 ORG (PANTRY LATCH)
- FH11 OPEN
- FH10 10 RED (PATIO AWNING)
- FH16 12 GRN (FURNACE 1)
- FH15 12 ORG (FURNACE 2)
- FH14 12 RED (HYDRONIC HEATER)
- FH6 SPARE
- FH9 16 RED/YEL (BDRM CEILING FAN)
- R1-85 16 WHT (GROUND)
- R1-87 10 RED/BLK (FRONT BED LIFT)**
- FH1 14 BRN (ACC CONTROLS)
- R1-86 16 YEL/BLK (FCSS)

TOLERANCES ON MACHINED PARTS.	
INCHES	METRIC
XXX ± .06	X .3mm
XXX ± .03	XX .1mm
ALL OTHER PARTS AND ASSEMBLY TOLERANCES SHOULD BE HELD AS CLOSE AS POSSIBLE	

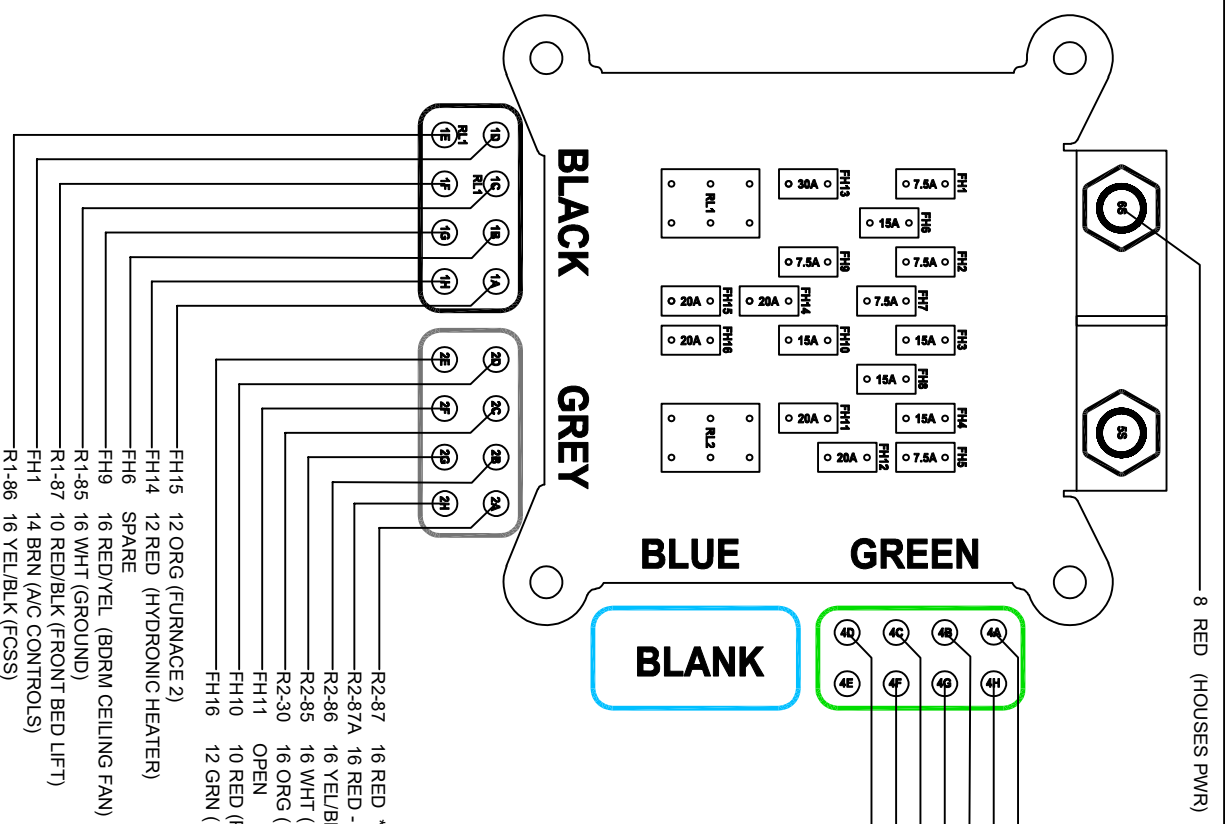
UNIT: ALL MODELS

PREPARED BY: B.MAIN	DATE: 4/2/21
CHECKED:	

USAGE OF THE INFORMATION CONTAINED ON THIS DOCUMENT IS CONTINGENT ON THE AGREEMENT TO THE CONDITIONS STATED ON PAGE 1

FOREST RIVER DIESEL MOTOR HOME DIVISION	
TITLE: 12V BATTERY + DIST PANEL	REV: A
SIZE: DWG/PRINT NUMBER: 0620-500965	SHEETS: 5/9

LOCATED: FRONT DRIVERSIDE
ELECTRICAL COMPARTMENT



HOUSE BATTERY FUSE DESCRIPTIONS

FUSE	SIZE	DESCRIPTION
FH1	7.5A	A/C-CTRLS
FH2	7.5A	KITCHEN-FAN
FH3	15A	EXT/RADIO/BUNK-TVS
FH4	15A	TV/ANT/WIFI-BOOSTER
FH5	7.5A	TRUMA-WATER/HTR
FH6	15A	PWR/WINDOW-SHADES
FH7	7.5A	BED-USB/PORTS
FH8	15A	DASH-RADIO(HOUSE)
FH9	7.5A	BEDROOM-CLG/FAN
FH10	15ACB	PATIO-AWNING
FH11	20A	SPARE
FH12	20ACB	CORD/HOSE-REELS
FH13	30A	COCKPIT-BEDLIFT
FH14	20A	HYDRONIC-HEATER
FH15	15A	FURNACE-2
FH16	15A	FURNACE-1/POWER-TRAY
RLY-1		PANTRY-LATCH
RLY-2		COCKPIT-BEDLIFT

- 19A (19)
- 18A (18)
- 17A (17)
- 16A (16)
- 15A (15)
- 14A (14)
- 13A (13)
- 12A (12)
- 11A (11)
- 10A (10)
- 9A (9)
- 8A (8)
- 7A (7)
- 6A (6)
- 5A (5)
- 4A (4)
- 3A (3)
- 2A (2)
- 1A (1)
- 29A (29)
- 28A (28)
- 27A (27)
- 26A (26)
- 25A (25)
- 24A (24)
- 23A (23)
- 22A (22)
- 21A (21)
- 20A (20)
- 39A (39)
- 38A (38)
- 37A (37)
- 36A (36)
- 35A (35)
- 34A (34)
- 33A (33)
- 32A (32)
- 31A (31)
- 30A (30)
- 49A (49)
- 48A (48)
- 47A (47)
- 46A (46)
- 45A (45)
- 44A (44)
- 43A (43)
- 42A (42)
- 41A (41)
- 40A (40)

TOLERANCES ON MACHINED PARTS.	
INCHES	METRIC
XXX ± .06	X .3mm
XXX ± .03	XX .1mm
ALL OTHER PARTS AND ASSEMBLY TOLERANCES SHOULD BE HELD AS CLOSE AS POSSIBLE	

PREPARED BY	B.MAIN
CHECKED	
DATE	4/2/21

FOREST RIVER DIESEL MOTOR HOME DIVISION	
TITLE 12V BATTERY + DIST PANEL	
SIZE	DWG/PRINT NUMBER: 0620-500965
REV:	A

USAGE OF THE INFORMATION CONTAINED ON THIS DOCUMENT IS CONTINGENT ON THE AGREEMENT TO THE CONDITIONS STATED ON PAGE 1