

Technical Service Bulletin

Mazda North American Operations
Irvine, CA 92618-2922



Subject: FRONT DOOR INTERFERES WITH REAR DOOR GARNISH (5-DOOR HATCHBACK)	Bulletin No.: 09-028/25
	Last Issued : 07/28/2025

BULLETIN NOTES

This bulletin supersedes the previously issued bulletin(s) listed below: The changes are noted in Red.

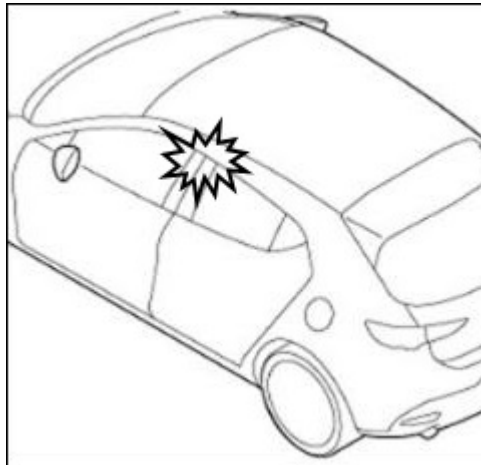
Previous TSBs	Date(s) Issued
09-033/23	09/26/23
09-014/22	09/12/22, 04/12/22
09-007/21	04/15/21, 02/25/21

APPLICABLE MODEL(S)/VINS

2019-2025 Mazda3 5-door HB (Japan built) with VINs lower than JM1BP*****766663 (produced before Sep. 27, 2024)

DESCRIPTION

Some vehicles may exhibit that the glass run channel of the front door interferes with the rear door garnish.



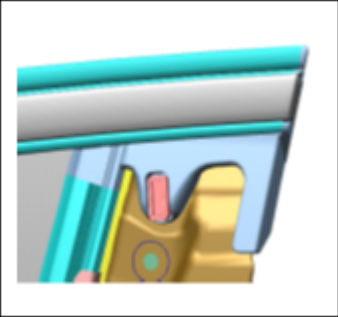
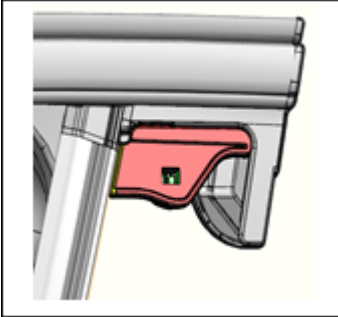
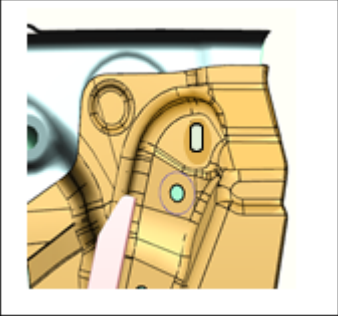
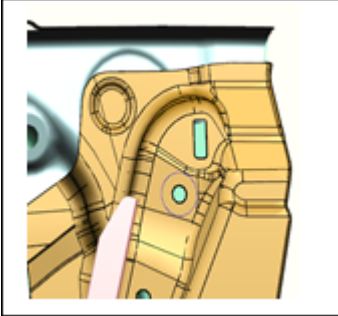
Since the front door glass run channel is not fixed to the door strongly enough for the following situations, cycles of door operation may result in interference and lead to damage on the seal rubber at the rear door.

CONSUMER NOTICE: The information and instructions in this bulletin are intended for use by skilled technicians. Mazda technicians utilize the proper tools/ equipment and take training to correctly and safely maintain Mazda vehicles. These instructions should not be performed by "do-it-yourselfers." Customers should not assume this bulletin applies to their vehicle or that their vehicle will develop the described concern. To determine if the information applies, customers should contact their nearest authorized Mazda dealership. Mazda North American Operations reserves the right to alter the specifications and contents of this bulletin without obligation or advance notice. All rights reserved. No part of this bulletin may be reproduced in any form or by any means, electronic or mechanical--including photocopying and recording and the use of any kind of information storage and retrieval system ---without permission in writing.

- When the front door glass is closed, the glass run channel may be forced to move to the B pillar side.
- In very hot climates, the glass run channel may expand to the B pillar side.

To eliminate this concern, the following 2 phases have been started as a running change:

- Phase 1
 - Adhesive has been added between the front door glass run channel and the door panel.
- Phase 2
 - The shape of the front door glass run channel has been changed so as not to make contact with the rear garnish.
 - The shape of the clip at the rear side of the front door glass run channel has been changed for stronger fixing and the hole at the door sheet metal panel has been changed accordingly.

	Old	New
Clip		
Hole at the door sheet metal panel		

- Phase 3
 - The material of the front door glass run-channel has been modified to increase its durability against misalignment during opening/closing doors and/or expansion due to heat.

Customers having this concern should have their vehicle repaired using the following repair procedure.

NOTE:

- This service information applies to 5-door hatchback models only.

CONSUMER NOTICE: The information and instructions in this bulletin are intended for use by skilled technicians. Mazda technicians utilize the proper tools/ equipment and take training to correctly and safely maintain Mazda vehicles. These instructions should not be performed by "do-it-yourselfers." Customers should not assume this bulletin applies to their vehicle or that their vehicle will develop the described concern. To determine if the information applies, customers should contact their nearest authorized Mazda dealership. Mazda North American Operations reserves the right to alter the specifications and contents of this bulletin without obligation or advance notice. All rights reserved. No part of this bulletin may be reproduced in any form or by any means, electronic or mechanical--including photocopying and recording and the use of any kind of information storage and retrieval system ---without permission in writing.

- For 4-door sedan models refer to 09-018/23 - FRONT DOOR INTERFERES WITH REAR DOOR GARNISH (MAZDA3 4-DOOR SEDAN)

REPAIR PROCEDURE

- Verify customer concern.
- Replace the part(s) that meet the conditions with new one(s) according to the Job Type table below.

NOTE:

- If the vehicle is NOT equipped with accessory side window deflectors, select Job Type A or B depending on the damage on the seal rubber at the rear door.
- If the vehicle is equipped with accessory side window deflectors, select Job Type C.

Job Type	A	B	C
Vehicle status	Damage on one side of rear door	Damage on both sides of rear door	Equipped with side window deflectors
Front door glass run channel	X (both sides)	X (both sides)	X
Front door garnish [R]	X (both sides)	X (both sides)	X
Clip (for sail garnish) [R]	X (both sides)	X (both sides)	X
Grommet [R] (for service hole cover #1 of front door)	X (both sides)	X (both sides)	X
Rear door glass run channel	X (damaged side only)	X (both sides)	X
Rear door garnish [R] (if replacing rear door glass run channel, the garnish replacement is necessary).	X (damaged side only)	X (both sides)	X
Clip [R] (for rear belt line molding)	X (damaged side only)	X (both sides)	X
Side window deflectors	-	-	X

X: Replace parts with new ones.

[R]: Replacement parts.

NOTE:

- Since the clip of the modified front door glass run-channel is bigger than the hole at the door sheet metal panel, cut the clip off and use a blind rivet instead according to the repair procedure "Riveting Procedure". Refer to the

CONSUMER NOTICE: The information and instructions in this bulletin are intended for use by skilled technicians. Mazda technicians utilize the proper tools/ equipment and take training to correctly and safely maintain Mazda vehicles. These instructions should not be performed by "do-it-yourselfers." Customers should not assume this bulletin applies to their vehicle or that their vehicle will develop the described concern. To determine if the information applies, customers should contact their nearest authorized Mazda dealership. Mazda North American Operations reserves the right to alter the specifications and contents of this bulletin without obligation or advance notice. All rights reserved. No part of this bulletin may be reproduced in any form or by any means, electronic or mechanical--including photocopying and recording and the use of any kind of information storage and retrieval system ---without permission in writing.

"VIN Table".

- Replace both sides of the front door garnishes as replacement parts [R].
- Replace the damaged part(s) of the rear door(s) listed in the "Job Type Table" with the new one(s).
- If the rear door glass run-channel is NOT damaged, but the rear door garnish is damaged, the rear door glass run-channel and the rear door garnish should be replaced together due to the design change causing a gap between them. Refer to "VIN Table".
- If the rear door garnish needs to be replaced, the rear door glass run channel should be also be replaced due to the design change causing a gap between them.

VIN Table (Japan Built):

Spec.	VIN	Riveting for Front Door Glass Run Channel	Rear Door Glass Run Channel must be replaced when replacing Rear Door Garnish
(US) 2019-2021 Mazda3	JM1 BP **** **	100001 to 158117	100001 to 312957

Riveting Procedure (a-i):

a. Remove the front door glass run-channel according to the instructions on MGSS (FRONT DOOR GLASS RUN-CHANNEL REMOVAL/INSTALLATION).

NOTE: The beltline molding does not need to be removed/replaced for this repair even though the procedure on MGSS instructs to do so. **Partially remove the beltline molding after removing the clip.**

b. Remove the clip plate from a modified front door glass run-channel.



c. Cut the clip off which does not fit with the hole at the door sheet metal panel.



d. Reassemble the clip plate and install the modified front door glass run-channel to the door sheet metal panel aligning the holes to be riveted.

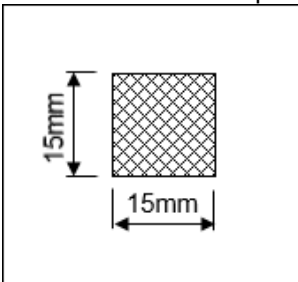
e. Install the rivet.

CONSUMER NOTICE: The information and instructions in this bulletin are intended for use by skilled technicians. Mazda technicians utilize the proper tools/ equipment and take training to correctly and safely maintain Mazda vehicles. These instructions should not be performed by "do-it-yourselfers." Customers should not assume this bulletin applies to their vehicle or that their vehicle will develop the described concern. To determine if the information applies, customers should contact their nearest authorized Mazda dealership. Mazda North American Operations reserves the right to alter the specifications and contents of this bulletin without obligation or advance notice. All rights reserved. No part of this bulletin may be reproduced in any form or by any means, electronic or mechanical--including photocopying and recording and the use of any kind of information storage and retrieval system ---without permission in writing.

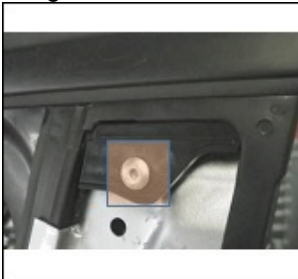


f. Select the unwoven fabric sheet (0.25mm x 100mm x 150mm) from the “Noise Repair Kit” (TA01-76-100) and cut the sheet into a piece of 15mm x 15mm square.

NOTE: If a “Noise Repair Kit” is not available, obtain an appropriate fabric sheet locally.



g. Apply the piece of unwoven fabric seat on the rivet head to avoid a noise that may occur between the rivet and the garnish.



h. Install the removed parts in the reverse order of removal.

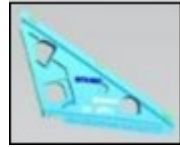
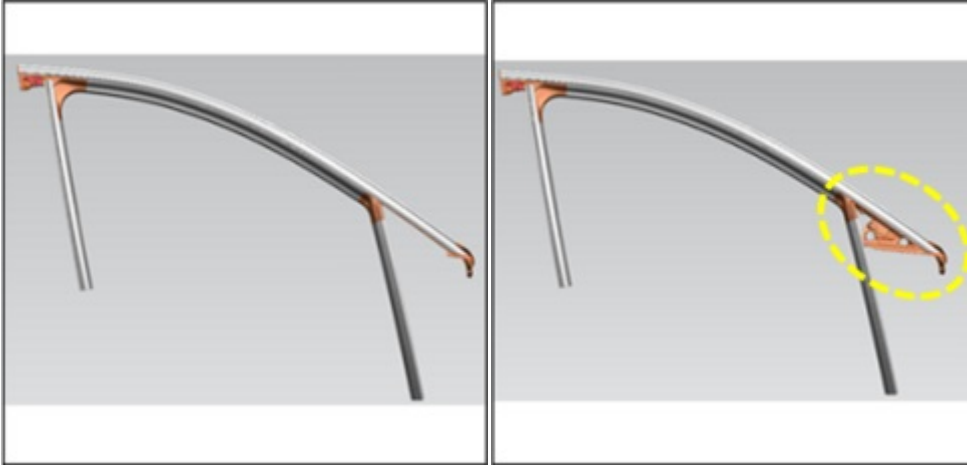
NOTE: There are two types of front door glass run channel.

- If the front door glass run channel obtained is BDMT-58/59-60ZJ or later level, remove and discard the sail garnish (1), which is originally installed on the vehicle according to the instructions on MGSS (SAIL GARNISH REMOVAL/INSTALLATION), before installing the front door glass run channel.

BDMT-58/59-60ZH

BDMT-58/59-60ZJ or later

CONSUMER NOTICE: The information and instructions in this bulletin are intended for use by skilled technicians. Mazda technicians utilize the proper tools/ equipment and take training to correctly and safely maintain Mazda vehicles. These instructions should not be performed by “do-it-yourselfers.” Customers should not assume this bulletin applies to their vehicle or that their vehicle will develop the described concern. To determine if the information applies, customers should contact their nearest authorized Mazda dealership. Mazda North American Operations reserves the right to alter the specifications and contents of this bulletin without obligation or advance notice. All rights reserved. No part of this bulletin may be reproduced in any form or by any means, electronic or mechanical—including photocopying and recording and the use of any kind of information storage and retrieval system ---without permission in writing.



Discard
(1) Sail garnish
(BCJH-58-621)

Front door glass run channel and sail garnish are integrally formed

- i. Perform the power window system initialization procedure (with auto open/auto close function) according to the instructions on MGS (POWER WINDOW SYSTEM INITIALIZATION PROCEDURE).
3. Verify the repair.

CONSUMER NOTICE: The information and instructions in this bulletin are intended for use by skilled technicians. Mazda technicians utilize the proper tools/ equipment and take training to correctly and safely maintain Mazda vehicles. These instructions should not be performed by "do-it-yourselfers." Customers should not assume this bulletin applies to their vehicle or that their vehicle will develop the described concern. To determine if the information applies, customers should contact their nearest authorized Mazda dealership. Mazda North American Operations reserves the right to alter the specifications and contents of this bulletin without obligation or advance notice. All rights reserved. No part of this bulletin may be reproduced in any form or by any means, electronic or mechanical---including photocopying and recording and the use of any kind of information storage and retrieval system ---without permission in writing.

PARTS INFORMATION

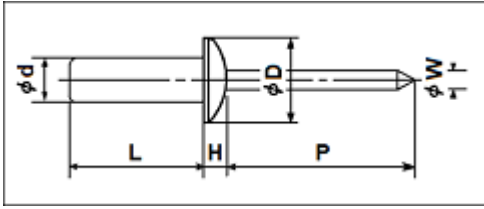
Parts Number	Description	Qty.	Notes
BDMT-58-60ZL	Channel (R), Glass	1	For front door
BDMT-59-60ZL	Channel (L), Glass	1	For front door
BCKC-50-M10C	Garnish (R), Front Door	1	[R] Black
BEMD-50-M10*	Garnish (R), Front Door	1	[R] Piano black
BCKC-50-M20C	Garnish (L), Front Door	1	[R] Black
BEMD-50-M20*	Garnish (L), Front Door	1	[R] Piano black
GHP9-50-M38	Clip, Garnish	3	[R] For sail garnish
BCJH-58-975B	Grommet, Screw	4	[R] For hole cover No.1
BDMT-72-60Z*	Run Channel (R), Glass	1	For rear door (if needed)
BDMT-73-60Z*	Run Channel (L), Glass	1	For rear door (if needed)
BCKC-50-M30D	Garnish (R), Rear Door	1	[R] Black (if needed)
BCKC-50-M40D	Garnish (L), Rear Door	1	[R] Black (if needed)
BEMD-50-M30*	Garnish (R), Rear Door	1	[R] Piano Black (if needed)
BEMD-50-M40*	Garnish (L), Rear Door	1	[R] Piano Black (if needed)
BCKA-72-604*	Clip	1 or 2	[R] For rear beltline molding (if needed)
90257-4810	Rivet	2	If needed. Refer to "Rivet Procedure"
TA01-76-100	Noise Part Kit	0	If needed. Refer to "Rivet Procedure". One (1) kit will repair 60 vehicles. NOTE: DO NOT throw the Noise Part Kit away. It is considered a shop supply that repairs multiple vehicles for multiple issues and the cost is included in the Labor Time.

[R]: Replace part

CONSUMER NOTICE: The information and instructions in this bulletin are intended for use by skilled technicians. Mazda technicians utilize the proper tools/ equipment and take training to correctly and safely maintain Mazda vehicles. These instructions should not be performed by "do-it-yourselfers." Customers should not assume this bulletin applies to their vehicle or that their vehicle will develop the described concern. To determine if the information applies, customers should contact their nearest authorized Mazda dealership. Mazda North American Operations reserves the right to alter the specifications and contents of this bulletin without obligation or advance notice. All rights reserved. No part of this bulletin may be reproduced in any form or by any means, electronic or mechanical--including photocopying and recording and the use of any kind of information storage and retrieval system ---without permission in writing.

Sample size of rivet (90257-4810)

d	L	H	D	P	W
4.8 mm	9.9 mm	1.8 mm	9.6 mm	27 mm	2.9 mm

**WARRANTY INFORMATION****NOTE:**

- This warranty information applies only to verified customer complaints on vehicles eligible for warranty repair.
- This repair will be covered under Mazda's New Vehicle Limited Warranty term.
- Additional diagnostic time cannot be claimed for this repair.

NOTE:

- DO NOT throw the Noise Parts Kit away. It is considered a shop supply that repairs multiple vehicles for multiple issues and the cost is included in the Labor Time.

Warranty Type	A
Symptom Code	90
Damage Code	9B
Part Number Main Cause	BDMT-58-60ZL or BDMT-59-60ZFL
Quantity	1

NOTE:

- Claim the Noise Repair Kit as a Related Parts for the first time repair.
- Claim accessory side window deflectors as a sublet expense with sublet code "H9".

Operation Number / Labor Hours:

Repair Procedure and Spec.	i-stop	Job A: Front Doors & One Rear Door	Job B: All Doors	Job C: All Doors With Side Deflectors
Labor Operation No. / Hrs.	w/o i-stop	XXS7ZARX / 1.9 Hrs.	XXS7ZBRX / 2.4 Hrs.	XXS7ZCRX / 3.2 Hrs.
	with i-stop	XXS7ZDRX / 2.0 Hrs.	XXS7ZERX / 2.5	XXS7ZFRX / 3.3

CONSUMER NOTICE: The information and instructions in this bulletin are intended for use by skilled technicians. Mazda technicians utilize the proper tools/ equipment and take training to correctly and safely maintain Mazda vehicles. These instructions should not be performed by "do-it-yourselfers." Customers should not assume this bulletin applies to their vehicle or that their vehicle will develop the described concern. To determine if the information applies, customers should contact their nearest authorized Mazda dealership. Mazda North American Operations reserves the right to alter the specifications and contents of this bulletin without obligation or advance notice. All rights reserved. No part of this bulletin may be reproduced in any form or by any means, electronic or mechanical---including photocopying and recording and the use of any kind of information storage and retrieval system ---without permission in writing.

(Mexico)

Hrs.

Hrs.

CONSUMER NOTICE: The information and instructions in this bulletin are intended for use by skilled technicians. Mazda technicians utilize the proper tools/ equipment and take training to correctly and safely maintain Mazda vehicles. These instructions should not be performed by "do-it-yourselfers." Customers should not assume this bulletin applies to their vehicle or that their vehicle will develop the described concern. To determine if the information applies, customers should contact their nearest authorized Mazda dealership. Mazda North American Operations reserves the right to alter the specifications and contents of this bulletin without obligation or advance notice. All rights reserved. No part of this bulletin may be reproduced in any form or by any means, electronic or mechanical---including photocopying and recording and the use of any kind of information storage and retrieval system ---without permission in writing.