

**TECHNICAL SERVICE BULLETIN, VIN:  
SB-76 GT1 Battery Heat and Spyder Memory Power**

July 25, 2025

Dear Tiffin Motorhome Owner,

It has come to our attention that on certain 2025 GT1 Motorhomes, the wiring for the battery heat and the Spyder memory are not connected to the house battery. If the wiring is not corrected, the battery settings will not be saved when the coach is turned off.

Please take your motorhome to a service center of your choice to have the correction completed. This repair should take **30 minutes** or less and will be completed at no charge to you.

A list of Tiffin Motorhomes authorized dealers is available online at <https://tiffinmotorhomes.com/service-center-locations>. If you are using a service center that is not a Tiffin Motorhomes authorized repair facility, please make sure that they contact Tiffin Motorhomes at 256-356-0261 or [service@tiffinmotorhomes.com](mailto:service@tiffinmotorhomes.com) for the required instructions and time allowed for the repair. Tiffin Motorhomes will not pay over the allowed time unless the repair facility receives prior authorization. For authorization, contact Tiffin Motorhomes at 256-356-0261 or [service@tiffinmotorhomes.com](mailto:service@tiffinmotorhomes.com).

*This technical service bulletin will expire September 1, 2026. Please make sure that the repair is completed prior to this date. Work completed after this date will be done at the customer's expense.*

You may be liable for any progressive damage that results from your failure to complete this technical service bulletin within a reasonable time after receiving notification.

We regret any inconvenience this action may cause but feel certain you understand our interest in your continued use and enjoyment of your coach.

Tiffin Motorhomes

## Technical Service Bulletin SB-76 Repair Instructions

**Purpose:** To correct the wiring for the Spyder memory and the battery heat to have a constant power source from the house battery.

**Models:** 2025 GT1 Motorhomes

**FLAT RATE CODE & TIME ALLOWED** When filing the warranty claim for payment, please use the following flat rate code. **9976SB00 for 0.50 hours.** No authorization is required for work completed at the flat rate times stated on the work instructions. Use "SB-76" as the authorization on claim for payment

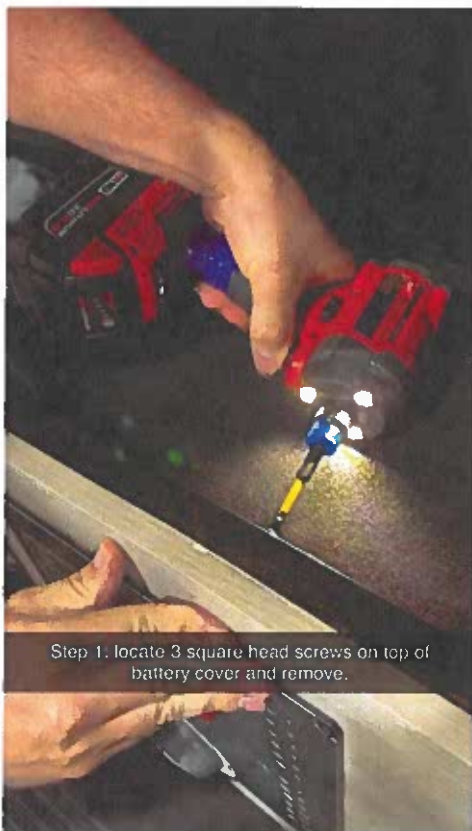
Tools Needed:

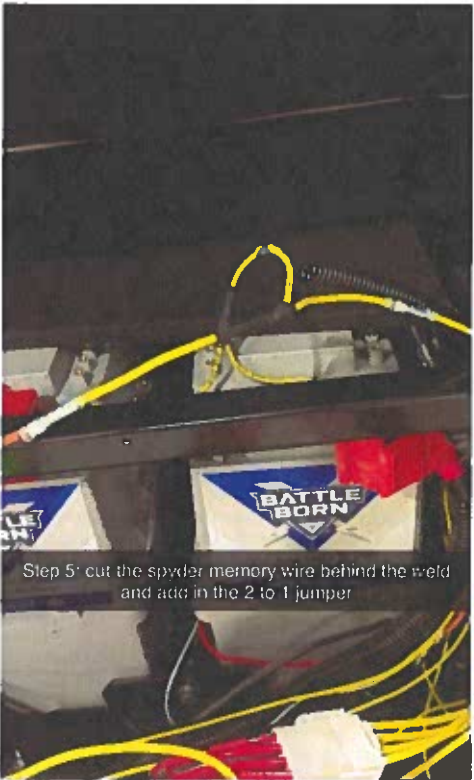
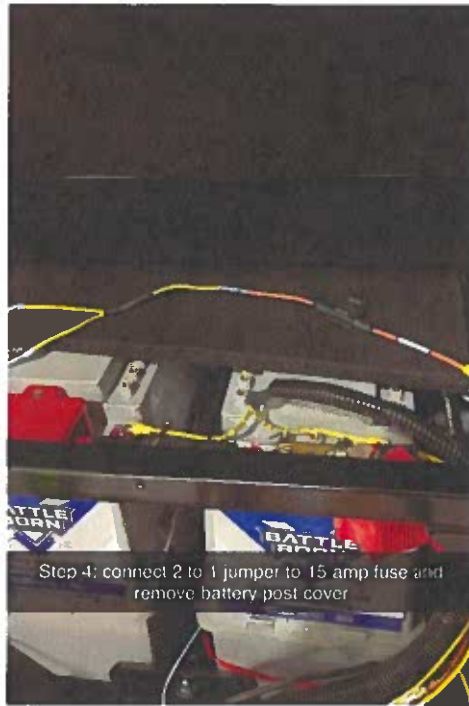
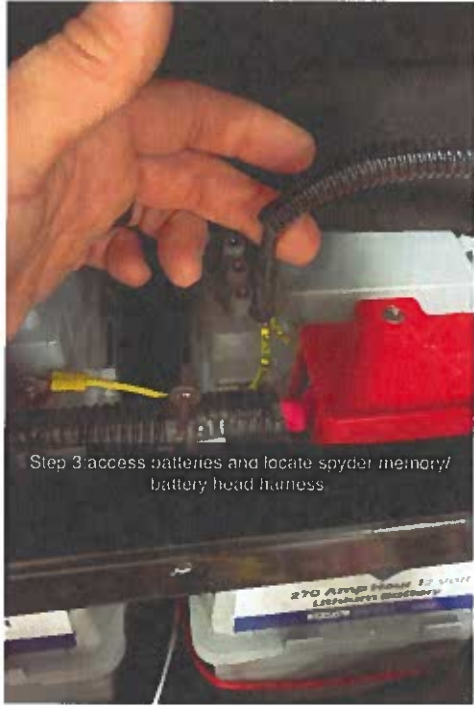
12V Wire Stripper & Cutters  
Drill with Phillips head & Square bit  
½" socket and wrench

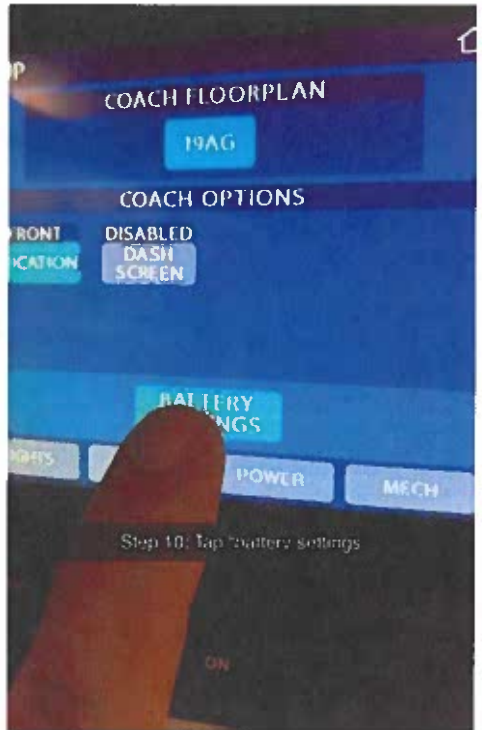
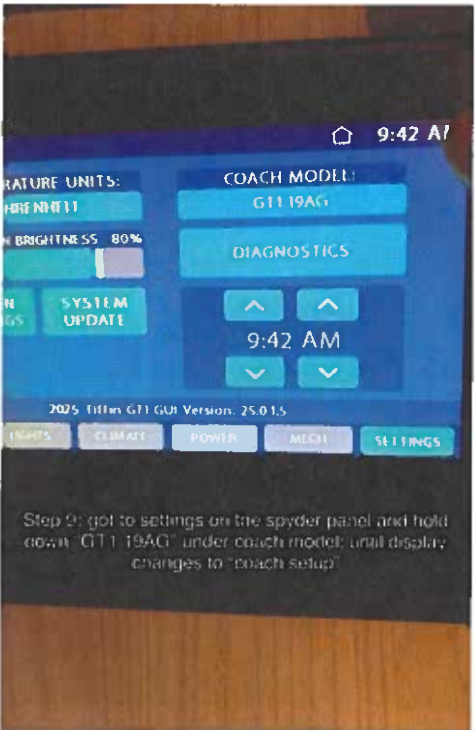
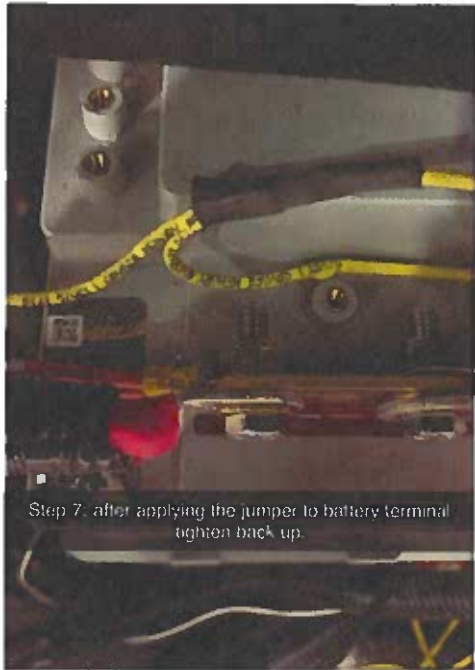
Parts Needed:

5032795 - 15-amp inline fuse  
5042959 - 2 to 1 jumper wire

1. Disconnect all power from the 30-amp shore cord.
2. Turn main battery disconnect "OFF".
3. Turn the chassis engine off.









Step 10: turn on inverter at the dc'd board and input battery settings. (Attached)

**GT1 Battery Settings:**

1. Go to Settings
2. Hold down GT1 until screen changes
3. Tap battery Settings

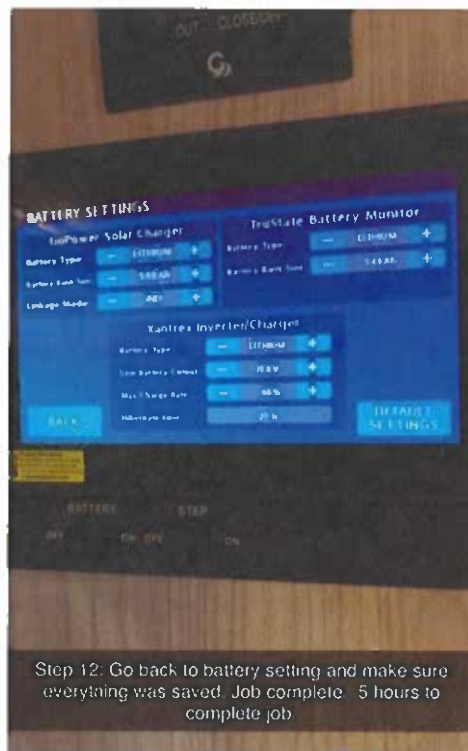
**Battery Settings**  
 Battery Type: Lithium  
 Bank Size: 540 amps for 2 batteries  
 1080 for 4 batteries

**Xantrex**  
 Battery Type: Lithium  
 Low Battery Cut Out: 10.8v

**True State**  
 Battery Type: Lithium  
 Bank Size: 540 amps for 2 batteries  
 1080 for 4 batteries



Step 11: Turn off house power. Wait 30 seconds and turn back on



Step 12: Go back to battery setting and make sure everything was saved. Job complete. 5 hours to complete job