

**Models Involved:** 2021 & 2022 Cahaba, all floorplans.

**Purpose:** To provide instructions to install a cover on the battery pack box

**Tools**

Drill  
Impact driver  
Forklift  
9/16 Wrench  
9/16 Socket  
Phillips head bit  
10,000 motorhome lifts  
Phillips head screwdriver

**Parts**

5163364, battery pack cover (figure 1)  
Spray foam  
2 of 5110416, heat pads  
14 Self-tapping screws, 3/4 inch  
Alcohol wipes



Figure 1, part 5163364, will be in 4 parts

**Note: Certain steps require 2 people**

**Repair instructions**

1. Disconnect all power from the 30-amp shore cord.
2. Make sure the Volta main system power button, located on shower wall behind driver's seat, is pushed into the "off" position.
3. Using the lifts, raise the coach to a safe working height.
4. Locate the service key switch on the Volta main battery pack and turn it to the "off" position.
5. Remove the 2 heat pads from the Volta battery pack. See figure 2.



Figure 2

6. Using a small Philips head screwdriver remove the plastic covers over the terminals.
7. Remove the small bolts holding the terminals in place. See figure 3.



Figure 3

8. Put the forklift in place directly under the frame for the battery pack. See figure 4.

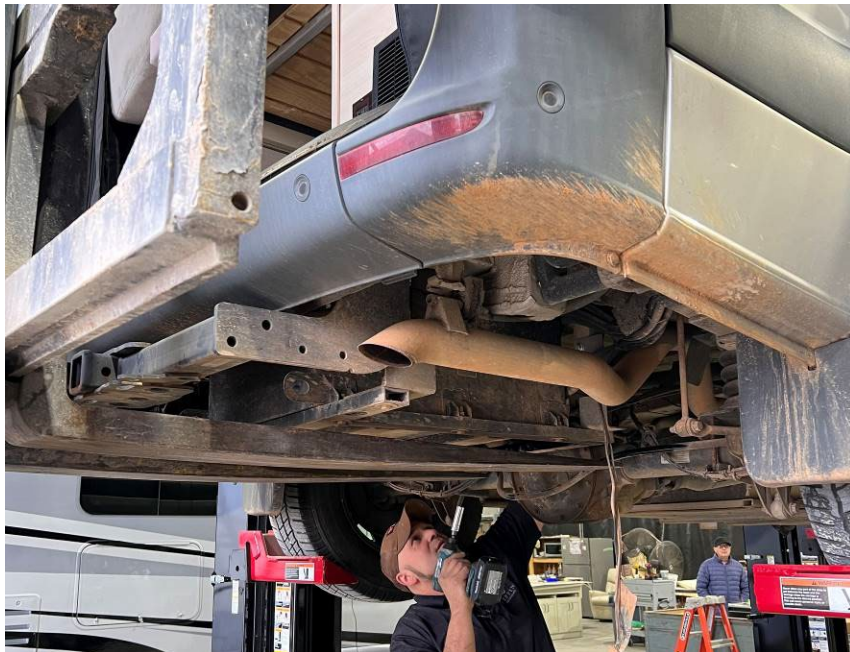


Figure 4

9. Using a 9/16 wrench and socket with an impact drill, remove the nuts and bolts holding the battery pack frame in place. See Figure 4. Remove the 8 bolts circled in yellow to remove the frame of the battery pack from the motorhome. DO NOT REMOVE THE 4 BOLTS CIRCLED IN RED. See figure 5A & 5B.

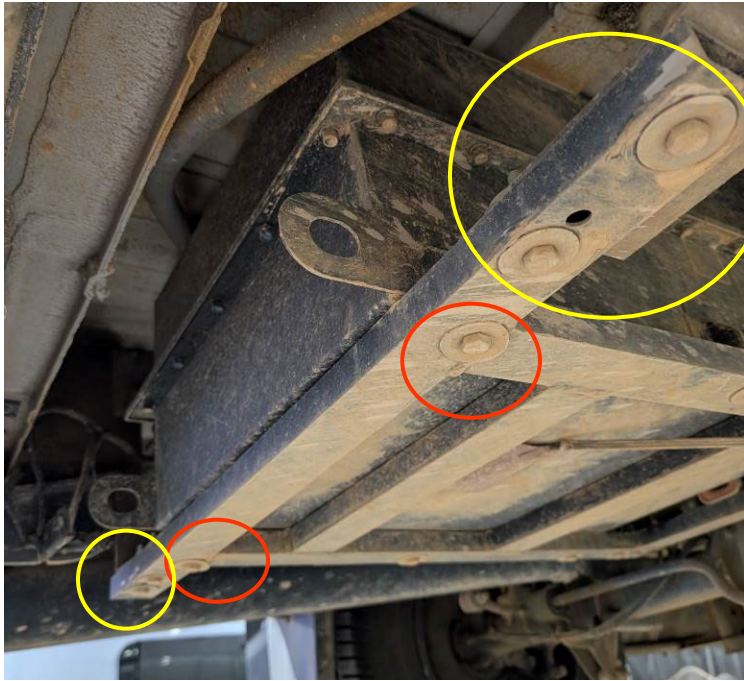


Figure 5A

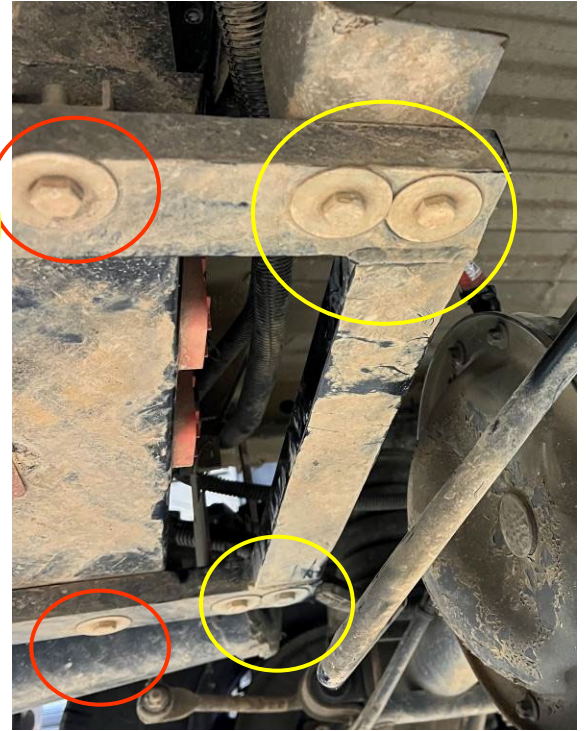


Figure 5B

10. After removing the bolts, lower the battery pack out of place. The battery pack must be lowered in increments to clear the frame of the motorhome.  
11. Raise the battery pack box cover in place to check for a proper fit.  
12. Route all wires through the opening in the side of the box.  
13. Route wires for the new heat pads into the opening in the floor and reconnect them. See figure 6A & 6B.



Figure 6A



Figure 6B

14. Using the forklift, bring the Volta battery pack back into place. Figure 7.



Figure 7

15. Bolt the bottom of the frame to the motorhome by reinstalling the 9/16 bolts that were removed in step 9. See figure 8.



Figure 8

16. Using alcohol wipes clean the area where the new heat pads will be installed on the bottom of the battery pack.  
17. Remove the backing from the heat pads and place them on the battery pack box.

18. Reattach the terminals to the front of the battery pack. See figure 9.

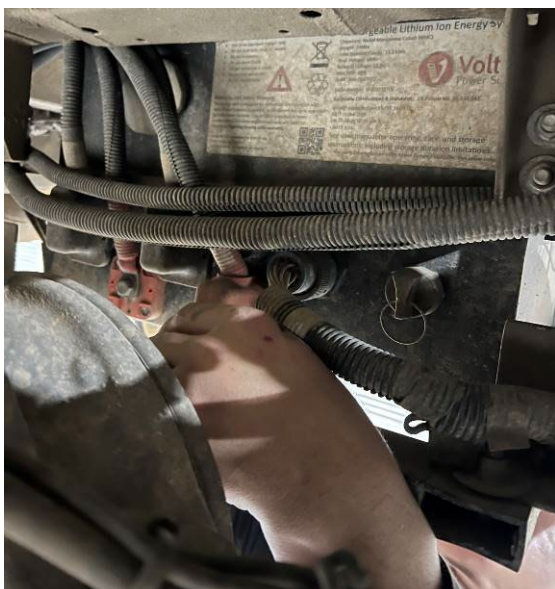


Figure 9

19. Using self-tapping screws attach the bottom of the enclosure to the top as shown below in figure 10.



Figure 10

20. Attach the front and the inspection panel with self-tapping screws. See figures 11A & 11B.



Figure 11A



Figure 11B

21. After completion use expandable spray foam to seal openings and metal clamps to tie back any loose wires. See figure 12.



Figure 12