

## Field campaign

<b>Topic</b>	Software Update   Window Short Drop Deletion   Continental GT/GTC   26MY (SC25 /31)
<b>Market area</b>	Bentley: worldwide (2WBE),China 796 VW Import Comp. Ltd (Vico), Beijing (6796)
<b>Brand</b>	Bentley
<b>Transaction No.</b>	2078277/4
<b>Campaign number</b>	ED59
<b>Note</b>	
<b>Type</b>	
<b>US code</b>	

## Vehicle data

### 26MY Continental GT / GTC

#### Sales types

Type	MY	Brand	Designation	Engine code	Gearbox code	Final drive code
Z23*	2026	E		*	*	*
Z24*	2026	E		*	*	*

## Documents

<b>Document name</b>
<a href="#">master.xml</a>
<a href="#">gt_glass_set_measurement_sheet.pdf</a>
<a href="#">gtc_glass_set_measurement_sheet.pdf</a>
<a href="#">v4sc2531vinlist.pdf</a>

ED59

Transaction No.: 2078277  
/4

Software Update | Window Short Drop Deletion | Continental GT/GTC | 26MY  
(SC25/31)

Release date: Jul 28, 2025

## Notes

▼ **Repair instructions**

## Technical background

### CAUTION

Please refer to all of the instructions within the Work section. The instructions MUST be followed in the exact order as detailed

## Remedy

All instructions within the Work section must be conducted as detailed

Software update is available for the left and right hand rear door control modules - Diagnostic address 00BB Driver side and 00BC Passenger side

The software eliminates the rear window short drop function

## Customer notification

Please ensure the software instructions within the Service campaign must be conducted at the nearest opportunity

## Warranty

Warranty type	710 or 790
Damage service number	ED59
Damage code	00 66
Criterion ID	01

### Time to conduct the Software Version Management (SVM) update - Rear door control modules

Labour operation code	01 51 00 00
Time	As per ODIS log Must not exceed 50 TU

### Time to conduct initial measurement checks Profile (Y-Axis) and Interlock (X-Axis)

Labour operation code	64 38 02 00
Time	30 TU

### CAUTION

The labour codes below must only be claimed if the Profile (Y-Axis) and Interlock (X-Axis) were out of specification (before and / or after the software update was conducted)

### Time to conduct the front glass adjustment procedure

Labour operation code 64 40 15 00

Time 140 TU (per side)

### Time to conduct the rear glass adjustment procedure

Labour operation code 64 75 15 00

Time 170 TU (per side)

### Water leak test

Labour operation code 64 38 01 99 (Use this code when conducting the water leak test)

Time 20 TU

### Additional Time Allowance

A 100TU allowance may be claimed only if a SVM update fails to complete successfully. This is intended to cover additional diagnostic or recovery work directly resulting from the failed update. It must not be used for unrelated delays or issues.

ODIS logs must be attached to a DISS ticket for evidence of failure. Claims without valid documentation will be rejected. Warranty Adjudicators will review associated ODIS logs and DISS queries to determine actual software update time.

## Parts

Not applicable

## Parts supply

### NOTICE

Should one or both of the measurements not be within specification the operative must refer to Rep.Gr 64 - Rear door drop glass - To adjust and conduct the front and rear glass adjustment procedure for the affected side left and / or right hand side to completion (all steps)

### NOTICE

Adjustment of all side glass requires the interior trim to be removed. Refer to "Rear quarter trim – To remove and fit". Rep. Gr. 70



To carry out the "Rear quarter trim – To remove and fit". Rep. Gr. 70 procedure, the following one-time-use parts must be replaced during the reinstallation:

N 989 244 01 x4 (Front seat belt slider bar fixing x2 each side)

N 989 244 01 x2 (Rear seat belt fixing x1 each side)

Refer to ETKA parts catalogue

## Parts despatch control

Not applicable

---

## Technical background

### CAUTION

Please refer to all of the instructions within the Work section. The instructions MUST be followed in the exact order as detailed

## Check

If the vehicle is not already listed as repaired in "Repair history" (in Elsa pro), check for the presence of the blue paint completion mark as shown within the Identification section

If neither are evident please conduct the instructions within the Work section to completion.

## Parts

Not applicable

## Work

### CAUTION

Ensure the vehicle is connected to a suitable 12V Lithium Ion battery charger before conducting any work

## Section 1 – Initial Glass Set Measurements

### NOTICE

Conduct initial glass set measurements and record the results in the model specific measurement document attached (see documents section). After completing the initial measurements, DO NOT make any adjustments until after the software update has been completed

### CAUTION

When completing the initial glass set measurements strictly adhere to the instructions in section 2



When completing measurements on Continental GTC models, complete a set of measurements with both the roof up and the roof down, as per the attached glass set measurement sheet

## Section 2 – Glass Set Measurement Instructions

### CAUTION

When completing the glass set measurement procedure, strictly adhere to the instructions below

If unsure about the measurement process follow the video on eAcademy or raise a full technical DISS query.

To eliminate confusion about the usage of WT10549/3 and the Y axis profile measurement between the front and rear windows and how to correctly read/enter the measurements in the tables, please refer to the below images to aid with accurate reading of the Y axis profile when using WT10549/3.

## Window Parallel

When the window is parallel take the 2mm step from the tool and minus the 2mm gap between front window and tool = -0mm (as shown in figure 1)

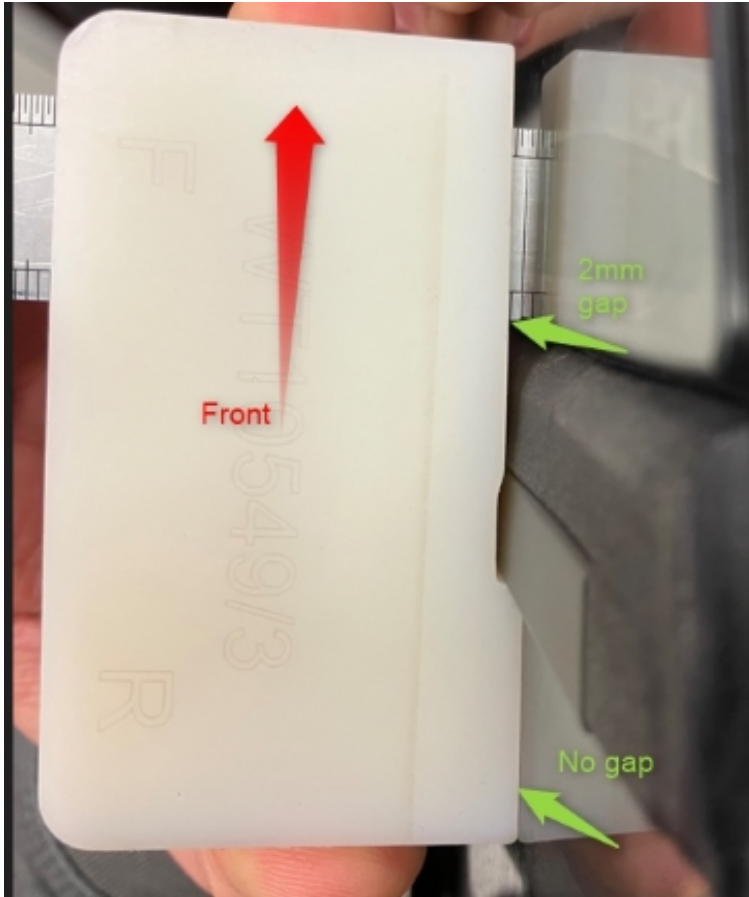


Figure 1

When the rear window is 0mm inboard from the front glass and the windows are parallel, the measurement written as 0mm (figure 2)

Profile (Y-Axis) Roof Down	Vehicle Position	Dimension -X-	Before adjustment
4 50mm from top of division bar	Front drop glass to rear quarter glass	+0 mm / - 2 mm	0mm

Figure 2

**Rear Window Inboard**

When the rear window is inboard and there is a 2mm step from the tool, when there is no gap between either window and tool (figure 3), the recorded measurement should be -2mm (figure 4)

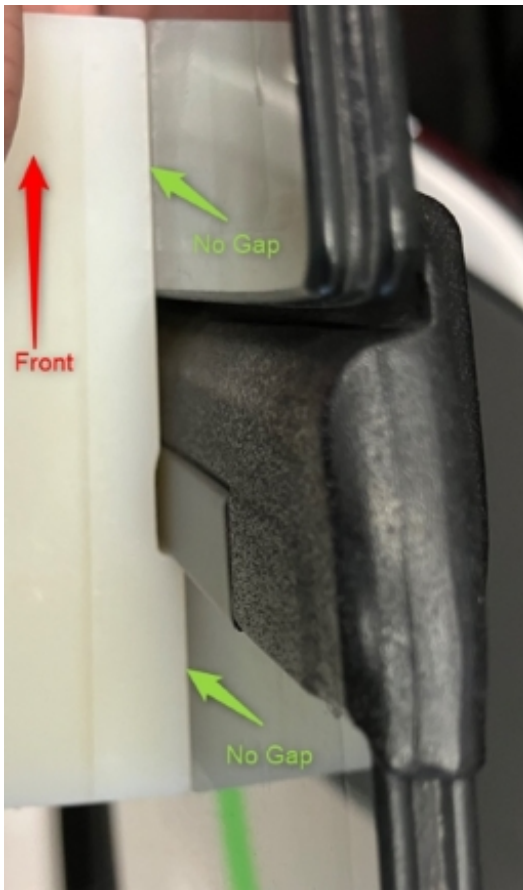


Figure 3

Profile (Y-Axis) Roof Down	Vehicle Position	Dimension -X-	Before adjustment
4 50mm from top of division bar	Front drop glass to rear quarter glass	+0 mm / - 2 mm	-2mm

Figure 4

**Rear Window Too Far Inboard**

When the rear window is inboard and there is a 2mm step from the tool as well as an additional 1.5mm gap to the window (figure 5), the recorded measurement should be -3.5mm (figure 6).

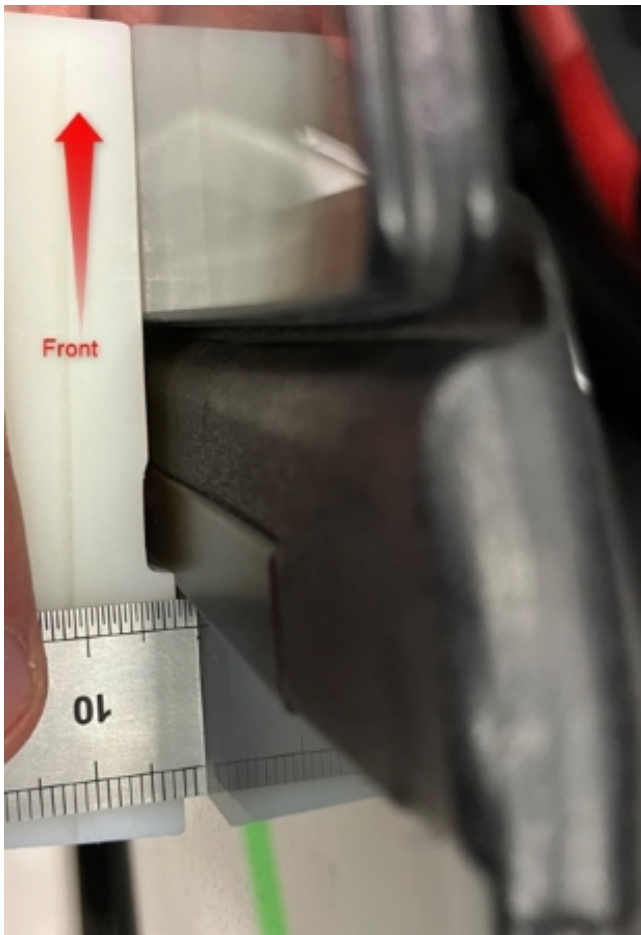


Figure 5

Profile (Y-Axis) Roof Down	Vehicle Position	Dimension -X-	Before adjustment
4 50mm from top of division bar	Front drop glass to rear quarter glass	+0 mm / - 2 mm	-3.5mm

Figure 6

If the tool (WT10549/3) does not sit flush against the rear window then this shows rear window is more than 2mm inboard (more than -2mm), check this by holding the tool on the front window and measuring gap between the rear glass and the tool (as shown in figure 7)

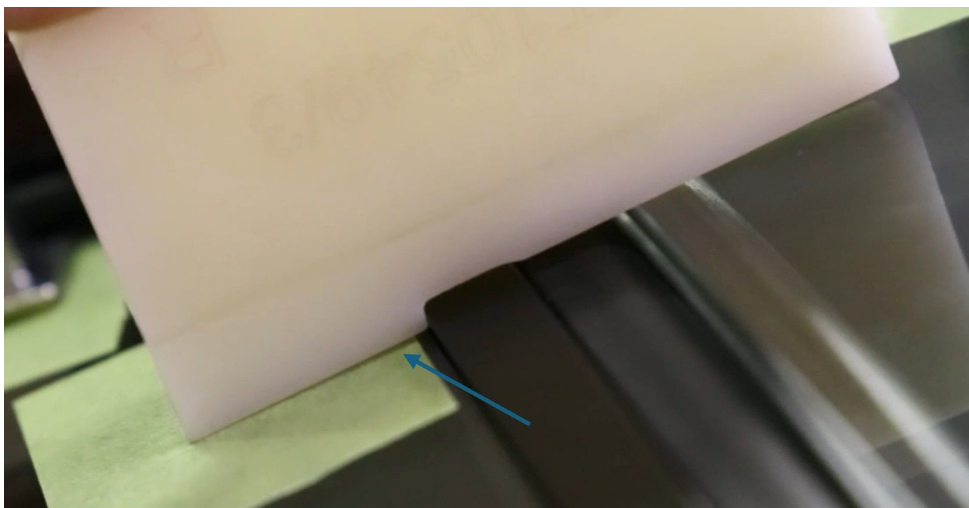


Figure 7

Further explanation can be found in the videos shown in Figure 8, which can be found on eAcademy Digital Learning Hub.

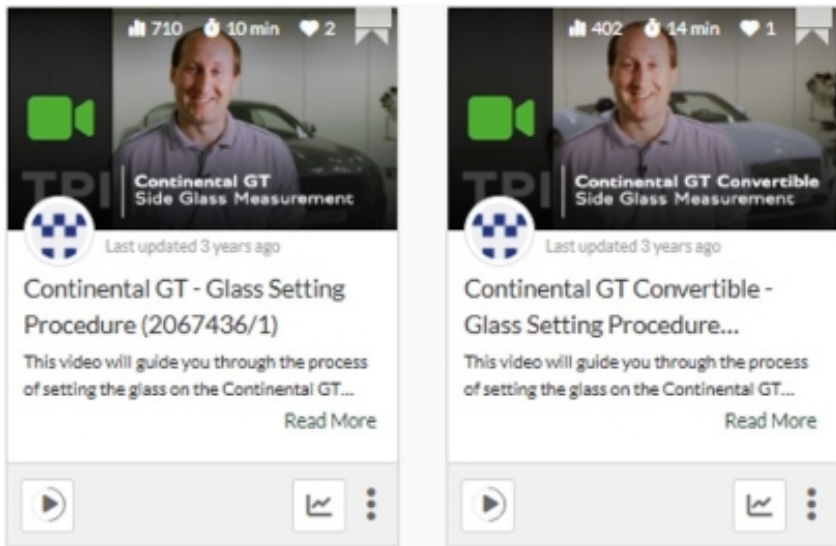


Figure 8

### Section 3 - Software update to the rear door control modules 00BB and 00BC - Short drop function elimination

**CAUTION**

**ONLY** Chargers that meet the approved specification on the Mandatory Equipment List (available on the Bentley Hub) **MUST** be used.

- The charger must be set to a mode where a **MINIMUM** of 90a is supplied to the battery during the process. Typically, this is known as 'Power Supply Mode' or 'DIAG+ Mode'.
- A voltage of exactly 14.8v must be set and maintained throughout the process.
- Please refer to the manual to ensure that these requirements are met before beginning any SVM update



The following software update eliminates the rear window short drop function

#### 1) Preparation before update

- Conduct a full guided fault find of the vehicle.



If a 'Check installation list' pop-up appears, select 'close' (Figure 9)

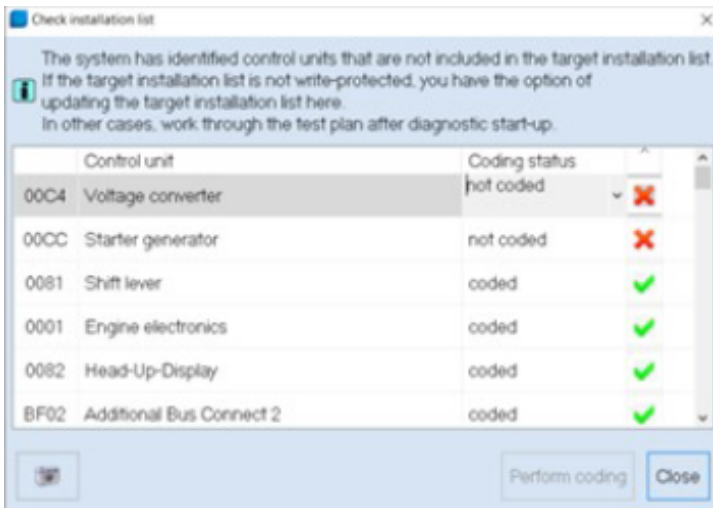


Figure 9

Referring to TPI 2075920, address any unknown faults **BEFORE** conducting any of the below updates.

2) Referring to Figure 10 - Within the Special functions tab - Select SVM - Code Input (Point A)

• Select Perform test (Point B)

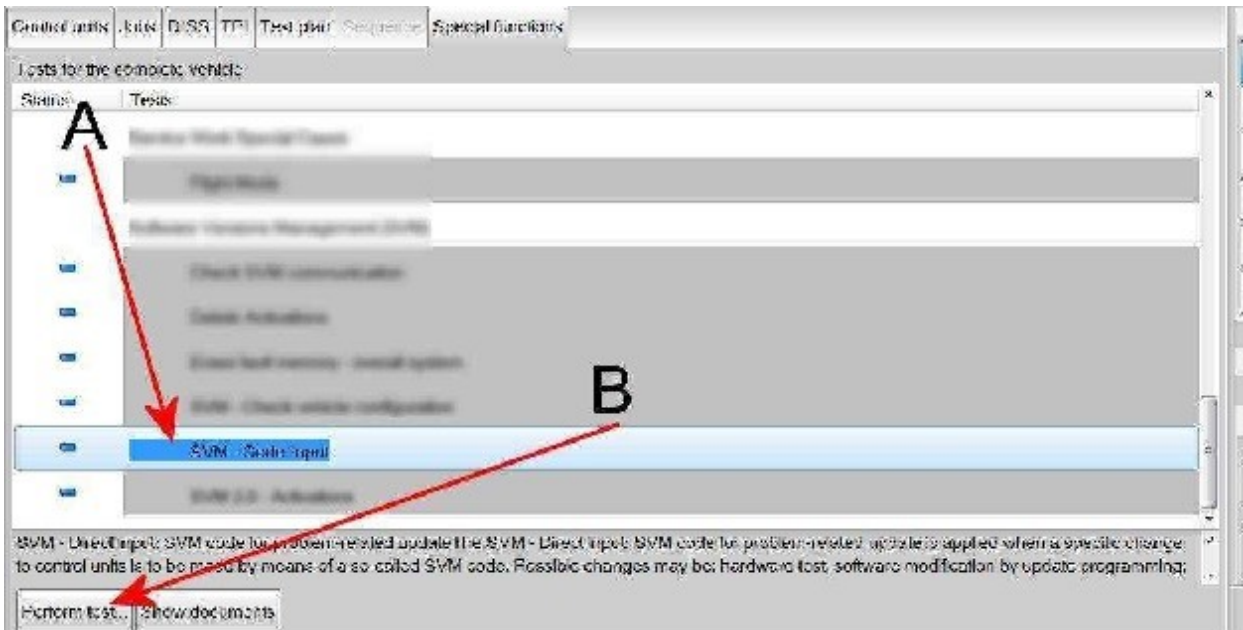


Figure 10

3) Referring to Figure 11 - Enter the SVM code **372WDD02**

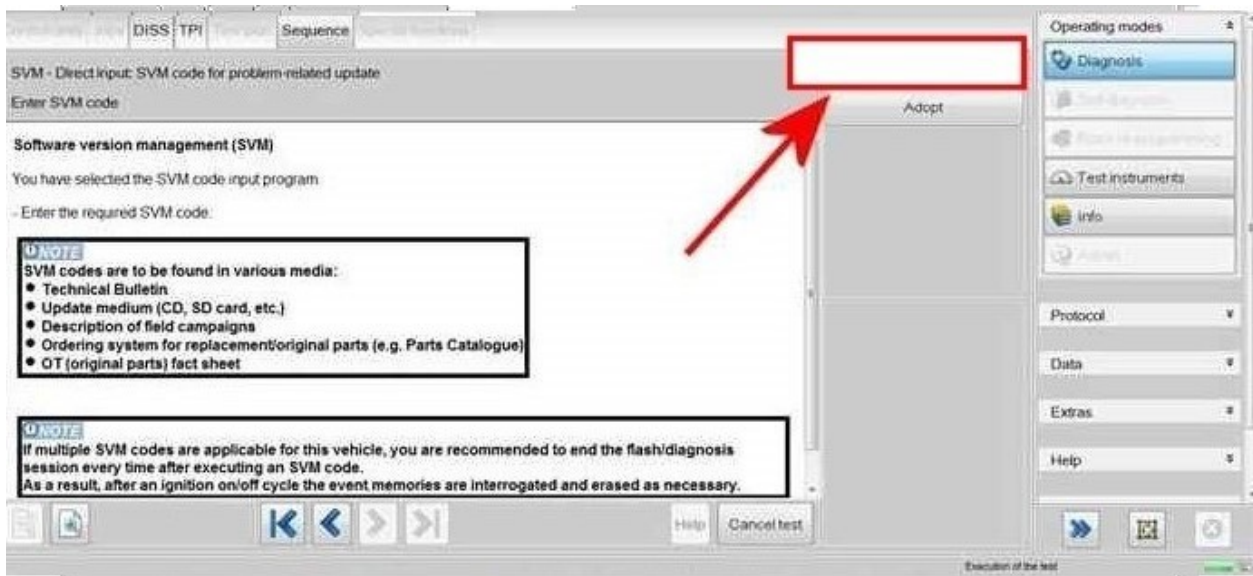


Figure 11

4) The control modules will automatically be updated one by one, starting with 00BB (Driver rear) and then 00BC (passenger rear)

**NOTICE**

If you get an error code, such as 8118. Perform a 20 minute CAN sleep, clear DTCs and retry the SVM input operation. If the error persists please raise a full technical DISS query with the log submitted online

5) On completion open the doors and ensure that the rear windows no longer drop.

6) Switch off the ignition

- Remove the diagnostic interface from the OBD port
- Switch off and remove the battery charger from the vehicle
- Close the bonnet, boot and all doors
- Lock the vehicle
- Wait 5 minutes to allow the vehicle to go into bus silence
- When 5 minutes has elapsed, unlock the vehicle and open the driver's door
- Switch on the ignition

7) Once the software update has been conducted continue with the remaining instructions

**Hint:** The remaining instructions MUST be conducted regardless if adjustments were conducted or not


8) Referring to Rep.Gr 64 - Measure and record the points as detailed below on the left and right hand side Profile (Y-Axis) and Interlock (X-Axis).

**CAUTION**


Strictly adhere to the instructions in section 2 when completing the glass set measurements after the software update has been completed.

Note: Should the measurements for the left and right hand side be within specification please go to step 11 and follow all remaining steps until completion

Or

 **NOTICE**

Should one or both of the measurements not be within specification the operative must refer to Rep.Gr 64 - Rear door drop glass - To adjust and conduct the front and rear glass adjustment procedure for the affected side left and / or right hand side to completion (all steps) and record a final measurement in the attached document

 **CAUTION**


All measurements must be recorded in the attached measurement documentation and saved as they will be required to be attached to a non-technical DISS query at the end of the procedure



**FAILURE TO ATTACH THE MEASUREMENTS TO THE DISS WILL RESULT IN NON PAYMENT OF THE WARRANTY CLAIM**

Note: Once the adjustment has been conducted please go to step 10 and follow all remaining steps until completion


9) **VERY IMPORTANT** - Referring to Rep.Gr 64 - Side glass - To initialise

 **CAUTION**

When conducting step 11 extra care must be taken to ensure the interior trim is suitably protected, any water which enters the vehicle due to a leak must be dried / cleaned immediately. Ensure all windows, sunroof and convertible roof (where applicable) are fully closed before conducting step 11

10) Conduct a water leak check to ensure that water is not leaking into the vehicles interior - Water leaks must be resolved before handing over the vehicle to the customer

11) Conduct the PDI road test to check for any wind noise related issues

 **NOTICE**

Should the vehicle fail the water leak check or a wind noise check, please raise a full technical DISS query

12) Upon successful completion of the PDI road test, raise a non-technical DISS query titled **SC25/30 X and Y Axis measurement feedback** ensuring the following is attached

- Online ODIS log
- A completed model specific measurement table

13) Referring to the Identification section - Apply a blue paint completion mark on the engine partition brace (Figure 12)

## Identification

Blue paint completion mark on the engine partition brace



Figure 12

---

▲ Repair instructions ▲ Notes

Side glass measurements GT 25MY for Campaign ED18					
Interlock (Z-Axis)	Vehicle Position	Dimension -X-	Before SVM	After SVM	After adjustment (if required)
A 50 mm from division bar	Front quarter glass	7.5 mm $\pm$ 1 mm			
B 150 mm from division bar	Front of door drop glass	8 mm $\pm$ 1 mm			
C 50 mm from rear of door drop glass	Rear of door drop glass	8 mm $\pm$ 1 mm			
D 50 mm from rear drop glass division bar	Front of rear quarter glass	8 mm $\pm$ 1 mm			
E 50 mm from rearmost section of rear drop glass	Rear of rear quarter glass	8 mm $\pm$ 1 mm			
Interlock (X-Axis)	Vehicle Position	Dimension -X-	Before SVM	After SVM	After adjustment (if required)
4 50 mm from the top of the window	Rear door quarter glass strip to front door drop glass edge	11 mm $\pm$ 1 mm			
5 50 mm from the waistrail seal	Rear door quarter glass strip to front door drop glass edge	11 mm $\pm$ 1 mm			
Profile (Y-Axis)	Vehicle Position	Dimension -X-	Before SVM	After SVM	After adjustment (if required)
1 50 mm from division bar	Front quarter glass	10 mm $\pm$ 1 mm			
2 150 mm from division bar	Front of door drop glass	10 mm $\pm$ 2 mm			
3 50 mm from rear of door drop glass	Rear of door drop glass	10 mm $\pm$ 2 mm			
6 50 mm from rear drop glass division bar	Front of rear quarter glass	10 mm $\pm$ 2 mm			
7 50 mm from rearmost section of rear drop glass	Rear of rear quarter glass	10 mm $\pm$ 2 mm			
8 50mm forwards of rear of front drop glass (waist rail gap)	Rear of door drop glass	5mm $\pm$ 1mm			
9 50mm rearward of front of rear drop glass (waist rail gap)	Front of rear quarter glass	5mm $\pm$ 1mm			
Profile (Y-Axis)	Vehicle Position	Dimension -X-	Before SVM	After SVM	After adjustment (if required)
4 50mm from top of division bar	Front drop glass to rear quarter glass	+0 mm / - 2.5 mm			
5 50mm from bottom of division bar	Front drop glass to rear quarter glass	+0 mm / - 2 mm			

<b>Side glass measurements GTC 25MY for Campaign ED18</b>					
<b>Interlock (Z-Axis)</b>	<b>Vehicle Position</b>	<b>Dimension -X-</b>	<b>Before SVM</b>	<b>After SVM</b>	<b>After adjustment (if required)</b>
1 50 mm from division bar	Front quarter glass	7.5 mm ± 1 mm			
2 100 mm from division bar	Front of door drop glass	8.5 mm ± 1 mm			
3 50 mm from rear of door drop glass	Rear of door drop glass	8.5 mm ± 1 mm			
6 50 mm from rear drop glass division bar	Front of rear quarter glass	8.5 mm ± 1 mm			
7 100 mm from where the hood meets the brightware	Rear of rear quarter glass	10 — 16mm			
<b>Interlock (X-Axis) Roof Up</b>	<b>Vehicle Position</b>	<b>Dimension -X-</b>	<b>Before SVM</b>	<b>After SVM</b>	<b>After adjustment (if required)</b>
4 50 mm from the top of the window	Rear door quarter glass strip to front door drop glass edge	11 mm ± 1 mm			
5 50 mm from the waistrail seal	Rear door quarter glass strip to front door drop glass edge	11 mm ± 1 mm			
<b>Interlock (X-Axis) Roof Down</b>	<b>Vehicle Position</b>	<b>Dimension -X-</b>	<b>Before SVM</b>	<b>After SVM</b>	<b>After adjustment (if required)</b>
4 50 mm from the top of the window	Rear door quarter glass strip to front door drop glass edge	11 mm ± 1 mm			
5 50 mm from the waistrail seal	Rear door quarter glass strip to front door drop glass edge	11 mm ± 1 mm			
<b>Profile (Y-Axis)</b>	<b>Vehicle Position</b>	<b>Dimension -X-</b>	<b>Before SVM</b>	<b>After SVM</b>	<b>After adjustment (if required)</b>
1 50 mm from division bar	Front quarter glass	10 mm ± 1 mm			
2 100 mm from division bar	Front of door drop glass	14 mm ± 2 mm			
8 50mm forwards of rear of front drop glass (waist rail gap)	Rear of door drop glass	5mm ± 1mm			
9 50mm rearward of front of rear drop glass (waist rail gap)	Front of rear quarter glass	5mm ± 1mm			
<b>Profile (Y-Axis) Roof Up</b>	<b>Vehicle Position</b>	<b>Dimension -X-</b>	<b>Before SVM</b>	<b>After SVM</b>	<b>After adjustment (if required)</b>
4 50mm from top of division bar	Front drop glass to rear quarter glass	+0 mm / - 2.5 mm			
5 50mm from bottom of division bar	Front drop glass to rear quarter glass	+0 mm / - 2 mm			
<b>Profile (Y-Axis) Roof Down</b>	<b>Vehicle Position</b>	<b>Dimension -X-</b>	<b>Before SVM</b>	<b>After SVM</b>	<b>After adjustment (if required)</b>
4 50mm from top of division bar	Front drop glass to rear quarter glass	+0 mm / - 2.5 mm			
5 50mm from bottom of division bar	Front drop glass to rear quarter glass	+0 mm / - 2 mm			

SCBCP2ZG1TC025063	SCBDB33S5TC024889	SCBDM33S5TC024790
SCBCP2ZG4TC025073	SCBDM33S0TC024115	SCBDM33S6TC024975
SCBDM33S1TC025029	SCBDM33S3TC025002	SCBDN33S3TC024994
SCBDM33S4TC025025	SCBDM33S6TC024829	SCBDN33S6TC024990
SCBDP4ZG6TC025074	SCBDM33S6TC025009	SCBDP4ZG3TC024755
SCBCB13S5TC025024	SCBDM33S7TC024998	SCBDR4ZG2TC024885
SCBCB13S6TC025016	SCBDP4ZG2TC025055	SCBDR4ZG4TC024032
SCBCB13S8TC024966	SCBDP4ZG8TC024928	SCBCB13S0TC024878
SCBCB13SXTTC024919	SCBDR4ZG4TC024192	SCBCB13S2TC024963
SCBCB13SXTTC024970	SCBCB13S6TC024948	SCBCB13S7TC024912
SCBCJ1ZG0TC024370	SCBCB13S8TC024918	SCBCB13S7TC025008
SCBCM13S3TC024979	SCBCB13S8TC025020	SCBCM13S0TC024874
SCBCM13S3TC024996	SCBCM13S1TC024883	SCBCM13S0TC024924
SCBCM13S5TC024465	SCBCM13S2TC025010	SCBCM13S2TC024908
SCBCM13S6TC025060	SCBCM13S3TC024965	SCBCM13S2TC024942
SCBCM13S7TC024936	SCBCM13S5TC025003	SCBCM13S4TC024974
SCBCM13S9TC025005	SCBCM13S7TC025004	SCBCM13S5TC024904
SCBCM13SXTTC025028	SCBCM13S8TC024914	SCBCM13S6TC024961
SCBCM1ZG2TC024992	SCBCM13S9TC024954	SCBCN13S4TC024972
SCBCM1ZG4TC024797	SCBCM13S9TC025019	SCBCN13S5TC024821
SCBCN13S1TC024573	SCBCM1ZG7TC024700	SCBCN13S6TC024844
SCBCN13S2TC024985	SCBCN13S2TC024999	SCBCN13S8TC024876
SCBCN13S3TC025045	SCBCN13S2TC025022	SCBCU13S0TC024969
SCBCN13S6TC024617	SCBCN13S5TC024981	SCBCU13S1TC024902
SCBCN13SXTTC025026	SCBCP2ZG2TC024861	SCBCU13S8TC024766
SCBCP2ZG5TC025048	SCBCP2ZG8TC024931	SCBDM33S8TC024864
SCBCP2ZG6TC024703	SCBCR13SXTTC025015	SCBDN33S4TC024910
SCBCP2ZG7TC025035	SCBCR2ZG0TC024934	SCBCB13S0TC024900
SCBCP2ZG9TC024307	SCBCR2ZG7TC024929	SCBCB13S1TC024940
SCBCR2ZG1TC025042	SCBCR2ZGXTTC024326	SCBCB13S5TC024682
SCBCR2ZG3TC025057	SCBCU13S8TC024587	SCBCM13S5TC024739

SCBCM13S6TC024698	SCBCN13S0TC024743	SCBCM1ZG5TC024503
SCBCM13S6TC024894	SCBCN13S6TC024827	SCBCM1ZG5TC024677
SCBCM1ZG4TC024637	SCBCN13SXTTC024684	SCBCM1ZGXTTC024819
SCBCM1ZG7TC024695	SCBCN1ZG5TC024658	SCBCN13S1TC024623
SCBCM1ZG8TC024852	SCBCP2ZG1TC024799	SCBCN13S4TC024163
SCBCN13S5TC024866	SCBCR2ZG3TC024846	SCBCN13SXTTC024376
SCBCN13S6TC024956	SCBCR2ZG4TC024855	SCBCP2ZG4TC024716
SCBCN13S7TC024898	SCBCR2ZG9TC024673	SCBCP2ZG7TC024791
SCBDM33S1TC024334	SCBCU13S9TC024811	SCBCR2ZG2TC024305
SCBDM33S4TC024456	SCBDB33S8TC024868	SCBDM33S0TC024745
SCBDN33S0TC024872	SCBDP4ZG1TC024818	SCBDM33S4TC024621
SCBDN33S8TC024635	SCBDP4ZG2TC024794	SCBDN33S5TC024740
SCBDR4ZG3TC024121	SCBDP4ZG3TC024769	SCBDP4ZG4TC024814
SCBCB13S2TC024848	SCBDP4ZG4TC024697	SCBCB13S4TC024804
SCBCM13S0TC024891	SCBDP4ZG4TC024778	SCBCB13S6TC024786
SCBCR13S5TC024807	SCBDP4ZG4TC024845	SCBCB13S9TC024779
SCBCR2ZG8TC024812	SCBDP4ZG5TC024806	SCBCM13S0TC024762
SCBCU13S9TC024842	SCBDP4ZG5TC024854	SCBCM13S0TC024793
SCBDM33S8TC024251	SCBDP4ZGXTTC024834	SCBCM13S2TC024777
SCBDP4ZG8TC024850	SCBCB13S0TC024816	SCBCM1ZG2TC024751
SCBDR4ZG8TC024860	SCBCB13S2TC024476	SCBCM1ZG5TC024730
SCBCB13S1TC024856	SCBCB13S4TC024835	SCBCM1ZG7TC024809
SCBCB13S3TC024728	SCBCB13S5TC024830	SCBCN13S5TC024253
SCBCB13SXTTC024757	SCBCB13S8TC024837	SCBCN13SXTTC024720
SCBCD13S3TC024318	SCBCM13S0TC024714	SCBCN1ZG0TC024583
SCBCM13S0TC024390	SCBCM13S1TC024687	SCBCP2ZG1TC024771
SCBCM13S5TC024871	SCBCM13S4TC024747	SCBCU13S4TC024795
SCBCM13S7TC024788	SCBCM13S9TC024825	SCBCU13S6TC024801
SCBCM1ZG4TC024735	SCBCM13S9TC024839	SCBCU13S9TC024775
SCBCM1ZG5TC024629	SCBCM13SXTTC024722	SCBDM33S0TC024602
SCBCN13S0TC024709	SCBCM1ZG2TC024832	SCBDM33S2TC024388

SCBDP4ZG1TC024012	SCBDP4ZG5TC024711	SCBCU13SXTC024641
SCBDP4ZG6TC024507	SCBDP4ZG7TC024726	SCBDB33S6TC024321
SCBDP4ZG8TC024802	SCBDP4ZG8TC024749	SCBDM33S7TC024497
SCBDU33S2TC024732	SCBDU33S1TC024530	SCBDM33S9TC024565
SCBCD13S3TC024724	SCBCB13S2TC024526	SCBDM3ZG6TC024607
SCBCJ13S6TC024712	SCBCB13SXTC024483	SCBDN33S9TC024627
SCBCM13S1TC024270	SCBCM13S3TC024187	SCBDN3ZG5TC024689
SCBCM13S1TC024768	SCBCM13S7TC024631	SCBDN3ZGXTC024672
SCBCM13S5TC024675	SCBCM1ZG0TC024733	SCBDP4ZG9TC024615
SCBCM13S5TC024756	SCBCM1ZG2TC024510	SCBDR4ZG7TC024414
SCBCM13S6TC024653	SCBCP2ZG3TC024691	SCBDU33S1TC024656
SCBCM13SXTC024753	SCBCP2ZG6TC024667	SCBDU33S4TC024554
SCBCM1ZG4TC024671	SCBCR2ZG0TC024741	SCBCB13S4TC024592
SCBCM1ZG4TC024704	SCBCR2ZG9TC024737	SCBCB13S8TC024322
SCBCM1ZG7TC024664	SCBDM33S1TC024611	SCBCM13S2TC024603
SCBCM1ZG8TC024608	SCBDM33S7TC024693	SCBCM13S5TC024563
SCBCM1ZGXTC024495	SCBDM33S8TC024685	SCBCM13S5TC024644
SCBCM1ZGXTC024643	SCBDM3ZG8TC024480	SCBCM1ZG2TC024541
SCBCN13S0TC024659	SCBDP4ZGXTC024719	SCBCM1ZGXTC024528
SCBCN13S9TC024773	SCBDR33S0TC024715	SCBCM1ZGXTC024562
SCBCP2ZG8TC024301	SCBCB13S1TC024680	SCBCN13S4TC024650
SCBCR13S1TC024710	SCBCB13S4TC024625	SCBCP2ZG0TC024633
SCBCR13S8TC024669	SCBCM13S6TC024491	SCBCU13S1TC024558
SCBCU13S6TC024782	SCBCM13S9TC024209	SCBCU13S2TC024505
SCBCU13SXTC024655	SCBCM1ZG4TC024718	SCBCU13S4TC024571
SCBDM33S0TC024597	SCBCN13S5TC024706	SCBDM33S0TC024230
SCBDM33S1TC024639	SCBCN13S8TC024313	SCBDM33S1TC024124
SCBDM33S4TC024666	SCBCN13S8TC024599	SCBDM33S4TC024585
SCBDM3ZG9TC024679	SCBCR2ZG4TC024662	SCBDM33S9TC024548
SCBDN33S6TC024701	SCBCU13S0TC024616	SCBDN33S7TC024478
SCBDP4ZG4TC024473	SCBCU13S3TC024707	SCBDN33S7TC024660

SCBDP4ZG8TC024590	SCBCP2ZG0TC024311	SCBCN13SXTC024474
SCBDP4ZG9TC024355	SCBDB33S3TC024258	SCBCR2ZG6TC024484
SCBDP4ZGXTC024560	SCBDN33S6TC024570	SCBDM33S0TC024518
SCBDP4ZGXTC024574	SCBDP4ZG4TC024540	SCBDM33S3TC023749
SCBDU33S2TC024648	SCBDR4ZGXTC024567	SCBDM33S6TC024412
SCBCB13S4TC024589	SCBCM13S5TC024546	SCBDM33S8TC024363
SCBCB13S7TC024425	SCBCM13S6TC024538	SCBDN33S3TC024493
SCBCM13S5TC024613	SCBCM13SXTC024512	SCBDN33S4TC024504
SCBCM13S7TC024595	SCBCN13S1TC024508	SCBDN33SXTC024524
SCBCM1ZG2TC024605	SCBCN13S5TC024513	SCBDP4ZG0TC023966
SCBCM1ZG5TC024372	SCBCN13S9TC024353	SCBDP4ZG0TC024373
SCBCN13S0TC024628	SCBCP2ZG6TC024555	SCBDP4ZG1TC024429
SCBCN13S5TC023930	SCBCP2ZG9TC024551	SCBCB13S0TC024332
SCBCN13S8TC024568	SCBCR2ZG5TC024458	SCBCB13S1TC024467
SCBCN1ZG3TC024545	SCBCU13S0TC024499	SCBCB13S1TC024470
SCBCN1ZG4TC024604	SCBCU13S8TC024525	SCBCB13S5TC024455
SCBCP2ZG5TC024577	SCBCU13S8TC024556	SCBCB13S8TC024451
SCBCP2ZGXTC024543	SCBDN33S6TC024536	SCBCB13S9TC024460
SCBCU13S2TC024620	SCBDN33SXTC024569	SCBCM13S5TC024191
SCBCU13S5TC024594	SCBDP4ZG4TC024487	SCBCN13S7TC024481
SCBCU13S9TC024601	SCBDP4ZG5TC024501	SCBCN1ZG1TC024432
SCBDM33S2TC024018	SCBDR4ZG4TC024550	SCBCR2ZG0TC024271
SCBDN3ZG9TC024534	SCBDR4ZGXTC024522	SCBCR2ZG6TC024453
SCBDP4ZG6TC024572	SCBDU33S2TC024360	SCBDB33S5TC024309
SCBDP4ZG8TC024511	SCBCB13S4TC024463	SCBDM33S2TC024035
SCBCB13S1TC024579	SCBCG13S1TC024521	SCBDM33S6TC024443
SCBCB13S5TC024472	SCBCM13S0TC023983	SCBDM33SXTC024462
SCBCM13S5TC024532	SCBCM13S9TC024520	SCBDN33S4TC024454
SCBCM13S7TC024516	SCBCN13S0TC024404	SCBDN33S4TC024468
SCBCM1ZG3TC024533	SCBCN13S1TC024489	SCBDN33S4TC024485
SCBCN1ZG2TC024553	SCBCN13S9TC024515	SCBDR4ZG2TC024367

SCBDR4ZGXTC024441	SCBCM13S5TC024255	SCBCG13S8TC024340
SCBCB13S0TC024444	SCBCM13S5TC024269	SCBCM13S5TC024210
SCBCB13S7TC024411	SCBCM13SXTTC024381	SCBCM13SXTTC024090
SCBCB13S7TC024439	SCBCM13SXTTC024431	SCBCN13S0TC024290
SCBCM13S7TC024046	SCBCN13S3TC024333	SCBCN13S4TC024292
SCBCM13S7TC024435	SCBCN13S5TC024298	SCBCN13S8TC024215
SCBCM1ZG5TC024419	SCBCN13S5TC024320	SCBCP2ZG7TC024287
SCBCN13S3TC024297	SCBCN13S5TC024379	SCBCP2ZG9TC024386
SCBCN13S4TC024406	SCBCN13S7TC024335	SCBDM33S1TC024155
SCBCN13S6TC024245	SCBCR2ZG2TC024420	SCBDM33S1TC024365
SCBCN13S9TC024448	SCBDM33S4TC024392	SCBDP4ZG5TC024398
SCBCN1ZG4TC024344	SCBDM33S7TC024385	SCBCM13S0TC024356
SCBCN1ZG9TC024436	SCBDM33S7TC024418	SCBCM13S1TC024284
SCBCP2ZG8TC024119	SCBDM33S8TC024282	SCBCM13S1TC024348
SCBCR2ZG4TC024399	SCBDP4ZG1TC024303	SCBCM13S4TC024358
SCBDB33S6TC024383	SCBDP4ZG4TC024330	SCBCM13S7TC024368
SCBDN33S5TC024446	SCBDP4ZG4TC024408	SCBCM1ZGXTTC024156
SCBDN33S8TC024327	SCBDP4ZG9TC024422	SCBCN13S2TC024310
SCBDP4ZG0TC024437	SCBDR4ZG7TC024400	SCBCN13S4TC024342
SCBDP4ZG2TC024424	SCBCB13S2TC024364	SCBCP2ZG0TC024289
SCBDP4ZG5TC024000	SCBCJ1ZG7TC024351	SCBCP2ZG4TC024232
SCBDP4ZG7TC024449	SCBCM13S3TC024092	SCBDM33S4TC024182
SCBCB13S2TC024395	SCBCM13S7TC024337	SCBDM33S6TC024166
SCBCB13S4TC024396	SCBCN13SXTTC024409	SCBDM33S6TC024300
SCBCB13S6TC024402	SCBDM33SXTTC024378	SCBDM3ZG2TC024247
SCBCB13SXTTC024421	SCBDN33S5TC024317	SCBDN33S3TC024204
SCBCD13S8TC024427	SCBCB13S0TC024346	SCBDN33S8TC024201
SCBCM13S1TC024382	SCBCB13S2TC024350	SCBDP4ZG0TC024325
SCBCM13S3TC024416	SCBCB13S5TC024133	SCBDP4ZG3TC024349
SCBCM13S4TC024294	SCBCB13S6TC024304	SCBDP4ZG9TC024338
SCBCM13S4TC024361	SCBCB13S7TC024375	SCBDR4ZG0TC024268

SCBCN13S1TC024315	SCBCP2ZG0TC024194	SCBDM33S5TC024207
SCBCN13S8TC024277	SCBCP2ZG1TC024107	SCBDM33S7TC024144
SCBCN13S9TC024160	SCBCP2ZG3TC024206	SCBDM33S7TC024161
SCBCN1ZG6TC024328	SCBCP2ZG5TC024241	SCBDM33S9TC024212
SCBCP2ZG4TC024229	SCBCP2ZG8TC024248	SCBDM33SXTTC024168
SCBCP2ZG4TC024280	SCBCP2ZG9TC024260	SCBDN33S0TC024158
SCBCP2ZG6TC024250	SCBCP2ZGXTTC024154	SCBDN33S7TC024223
SCBCP2ZG6TC024314	SCBDM33S8TC024170	SCBDP4ZG0TC024244
SCBCP2ZGXTTC024218	SCBDM33S9TC024226	SCBDP4ZG1TC024057
SCBCR2ZG3TC024295	SCBDN33S4TC024275	SCBDP4ZG5TC024059
SCBCR2ZG5TC024203	SCBDN33S5TC024219	SCBDP4ZG5TC024076
SCBDM33S0TC024261	SCBDN33S7TC024254	SCBDP4ZG6TC024233
SCBDM33S3TC024240	SCBDP4ZG4TC024196	SCBDR4ZG7TC024140
SCBDM33S8TC024279	SCBDP4ZG5TC024272	SCBCM13S2TC024181
SCBDP4ZG5TC024286	SCBDP4ZG6TC024152	SCBCM13S7TC024130
SCBDP4ZG8TC024265	SCBDP4ZG7TC024189	SCBCM13S9TC024176
SCBDR4ZG0TC024237	SCBDP4ZGXTTC024185	SCBCM13SXTTC024087
SCBDR4ZG4TC024323	SCBDR4ZG2TC024045	SCBCM13SXTTC024137
SCBDR4ZG5TC023973	SCBCM13S0TC024227	SCBCN13S4TC024180
SCBCM13S3TC023783	SCBCM13S1TC024236	SCBCN13S5TC024172
SCBCM13S4TC024263	SCBCM13S2TC024228	SCBCN13S6TC024097
SCBCM13S6TC024281	SCBCM13S3TC024190	SCBCP2ZG5TC024143
SCBCM13S7TC024239	SCBCM13S8TC024167	SCBCP2ZGXTTC024123
SCBCM13S9TC024257	SCBCM13SXTTC024171	SCBCP2ZGXTTC024199
SCBCN13S0TC024080	SCBCM13SXTTC024221	SCBCR2ZG8TC024177
SCBCN13S2TC024114	SCBCN13S1TC024184	SCBDN33S0TC024175
SCBCN13S2TC024243	SCBCN13S4TC024213	SCBDP4ZG6TC024216
SCBCN13S2TC024274	SCBCN13SXTTC024197	SCBDP4ZG9TC023707
SCBCN13S3TC024235	SCBCP2ZG0TC023921	SCBCM13S0TC024096
SCBCN13S3TC024266	SCBCR2ZG8TC023949	SCBCM13S2TC023824
SCBCN13S9TC024224	SCBDM33S2TC024178	SCBCM13S2TC024150

SCBCM13S3TC024111	SCBCR2ZG2TC024126	SCBDM33S9TC023786
SCBCM13S3TC024173	SCBDM33S3TC024027	SCBDN33S6TC023905
SCBCM13S6TC023860	SCBDM33S5TC024109	SCBDP4ZG3TC023993
SCBCM13S7TC023866	SCBDM33S6TC024104	SCBDP4ZG4TC024070
SCBCM13S7TC024113	SCBDM33S9TC024078	SCBDP4ZG5TC024112
SCBCN13S0TC024063	SCBDN33S4TC024082	SCBDP4ZG8TC023942
SCBCN13S5TC024141	SCBDP4ZG0TC024101	SCBDP4ZG9TC024050
SCBCN13S7TC024089	SCBDP4ZG4TC024148	SCBDR4ZG8TC024065
SCBCP2ZG0TC024146	SCBDP4ZG6TC024068	SCBCM13S6TC023969
SCBCP2ZG4TC024151	SCBDP4ZG6TC024135	SCBCM13S6TC024023
SCBCP2ZG6TC024054	SCBDP4ZG7TC024127	SCBCM13S7TC023897
SCBCR2ZG9TC024110	SCBDR4ZG9TC024091	SCBCM13SXTTC024011
SCBDM33S9TC024131	SCBCM13S4TC023971	SCBCM13SXTTC024042
SCBDN33SXTTC024118	SCBCM13S7TC024029	SCBCN13S3TC024073
SCBDP4ZG4TC024098	SCBCM13SXTTC024056	SCBCN13S5TC024009
SCBCM13S0TC024079	SCBCN13S0TC023995	SCBCP2ZG0TC024034
SCBCM13S1TC024088	SCBCN13S0TC024094	SCBCP2ZG1TC024060
SCBCM13S2TC024052	SCBCN13S2TC023979	SCBCP2ZG3TC023976
SCBCM13S2TC024116	SCBCN13S6TC024066	SCBCP2ZG3TC024075
SCBCM13S3TC023959	SCBCN13S8TC024005	SCBCR2ZG0TC024044
SCBCM13S4TC024036	SCBCN13S8TC024103	SCBCR2ZG7TC024039
SCBCM13S7TC023964	SCBCN13SXTTC024085	SCBDM33S7TC023883
SCBCM13S7TC023981	SCBCP2ZG0TC023711	SCBDN33S3TC023859
SCBCM13S9TC023884	SCBCP2ZG5TC023798	SCBDN33S7TC024030
SCBCM13S9TC023951	SCBCP2ZG5TC024031	SCBDN33S8TC024053
SCBCM13S9TC024128	SCBCP2ZG8TC024069	SCBDP4ZG2TC023984
SCBCN13S1TC024105	SCBCP2ZG8TC024122	SCBDP4ZG5TC023719
SCBCN13S2TC024100	SCBCP2ZG9TC024016	SCBDP4ZG5TC023977
SCBCN13S2TC024145	SCBCP2ZGXTC024025	SCBDP4ZG5TC024014
SCBCP2ZG8TC024072	SCBDM33S2TC023970	SCBDP4ZG6TC024006
SCBCP2ZGXTTC024008	SCBDM33S3TC024061	SCBDP4ZG6TC024037

SCBDP4ZG6TC024040	SCBDM33S6TC023714	SCBCM13S5TC023851
SCBDP4ZG8TC023987	SCBDP4ZG4TC023811	SCBCN13S6TC023791
SCBDP4ZG8TC024024	SCBDP4ZG4TC023940	SCBCP2ZG2TC023919
SCBDP4ZG9TC024047	SCBDP4ZG5TC023980	SCBCP2ZG2TC023936
SCBDR4ZG4TC023771	SCBDP4ZG7TC023902	SCBCP2ZG6TC023938
SCBCM13S8TC023827	SCBDP4ZG7TC023950	SCBCP2ZG8TC023911
SCBCM13S8TC023939	SCBDP4ZGXTTC023845	SCBCP2ZG9TC023822
SCBCN13S6TC024021	SCBDR4ZG2TC023932	SCBCR2ZG5TC023892
SCBCP2ZG4TC024019	SCBCM13S1TC023961	SCBDJ33S9TC023909
SCBCP2ZG7TC023835	SCBCM13S2TC023953	SCBDM33S2TC023886
SCBCP2ZG8TC024041	SCBCN13S5TC023829	SCBDM33S9TC023805
SCBDM33S0TC023840	SCBCN13S9TC023879	SCBDN33S6TC023838
SCBDP4ZG2TC024004	SCBCP2ZG1TC023846	SCBDP4ZG0TC023935
SCBDP4ZG5TC023946	SCBCP2ZG2TC023967	SCBDP4ZG3TC023802
SCBDP4ZG9TC023867	SCBCP2ZG3TC023864	SCBCM13S2TC023922
SCBDR4ZG6TC023996	SCBCP2ZG3TC023945	SCBCM13S5TC023901
SCBCM13S0TC023997	SCBCP2ZG3TC023962	SCBCM13S6TC023907
SCBCM13S2TC023872	SCBCP2ZG5TC023820	SCBCP2ZG2TC023760
SCBCM13S4TC023999	SCBCP2ZG6TC023941	SCBCP2ZG3TC023914
SCBCM13S8TC023889	SCBCP2ZG8TC023925	SCBCP2ZG4TC023887
SCBCM13S9TC024002	SCBCP2ZGXTTC023974	SCBCP2ZG6TC023874
SCBCN13S0TC023947	SCBDM33S4TC023937	SCBCP2ZG7TC023933
SCBCN13S3TC023957	SCBDM33S6TC023955	SCBCR2ZG2TC023882
SCBCN13S3TC023991	SCBDM33S9TC023920	SCBCR2ZG9TC023779
SCBCN13S4TC023904	SCBDN33S9TC023963	SCBDM33S2TC023855
SCBCN13S5TC023913	SCBDP4ZG1TC023944	SCBDM33S9TC023836
SCBCN13S7TC023900	SCBDP4ZG3TC023928	SCBDM33S9TC023898
SCBCN13SXTTC023986	SCBDP4ZG9TC023917	SCBDN33S0TC023799
SCBCP2ZG1TC023989	SCBDR4ZG1TC023873	SCBDP4ZG4TC023923
SCBCP2ZG7TC023916	SCBDR4ZG7TC023876	SCBDP4ZG5TC023896
SCBCR2ZG9TC023927	SCBCM13S1TC023877	SCBDP4ZG8TC023777

SCBDP4ZGXTC023862	SCBDP4ZG6TC023843	SCBCP2ZG3TC023704
SCBDP4ZGXTC023893	SCBDP4ZG7TC023821	SCBCP2ZG5TC023736
SCBDP4ZGXTC023912	SCBDP4ZGXTC023795	SCBCP2ZG7TC023690
SCBDP4ZGXTC023926	SCBDP4ZGXTC023828	SCBCP2ZG7TC023706
SCBDR4ZG1TC023890	SCBDR4ZG0TC023833	SCBCP2ZG7TC023723
SCBDR4ZG5TC023746	SCBCM13S3TC023699	SCBCP2ZGXTC023764
SCBCN13S5TC023720	SCBCM13S4TC023842	SCBCP2ZGXTC023778
SCBCR2ZG0TC023895	SCBCM13S6TC023857	SCBCR2ZG0TC023718
SCBDM33S2TC023774	SCBCN13S7TC023816	SCBCR2ZG1TC023775
SCBCM13S0TC023854	SCBCN13S9TC023848	SCBCR2ZG3TC023695
SCBCM13S1TC023751	SCBCP2ZG2TC023788	SCBCR2ZG3TC023745
SCBCM13SXTC023831	SCBCP2ZG6TC023762	SCBCR2ZG6TC023738
SCBCP2ZG0TC023806	SCBCP2ZG8TC023794	SCBCR2ZG7TC023702
SCBCP2ZG0TC023837	SCBCP2ZG9TC023769	SCBCR2ZG8TC023692
SCBCP2ZG0TC023868	SCBDM33S4TC023792	SCBCR2ZGXTC023709
SCBCP2ZG1TC023698	SCBDM33SXTTC023747	SCBDM33S0TC023742
SCBCP2ZG1TC023801	SCBDP4ZG1TC023703	SCBDM33S4TC023789
SCBCP2ZG5TC023834	SCBDP4ZG1TC023765	SCBDM33S9TC023691
SCBCP2ZG7TC023754	SCBDP4ZG3TC023735	SCBDN33S1TC023780
SCBCP2ZG8TC023813	SCBDP4ZG6TC023759	SCBDN33S7TC023752
SCBCR2ZG2TC023803	SCBDP4ZGXTC023733	SCBDP4ZG2TC023726
SCBCR2ZG3TC023812	SCBDR4ZG4TC023818	SCBDP4ZG6TC023700
SCBCR2ZG9TC023796	SCBCM13S5TC023767	SCBDP4ZG8TC023729
SCBDM33S1TC023815	SCBCM13S6TC023809	SCBDR4ZG1TC023694
SCBDM33S9TC023870	SCBCM13S7TC023785	SCBDR4ZG7TC023716
SCBDM33SXTTC023697	SCBCM13S9TC023772	SCBCM13S1TC023734
SCBDP4ZG1TC023880	SCBCN13S1TC023732	SCBCM13S6TC023731
SCBDP4ZG3TC023850	SCBCN13S3TC023781	SCBCM13S9TC023741
SCBDP4ZG4TC023808	SCBCN13S9TC023817	SCBCN13S4TC023708
SCBDP4ZG4TC023825	SCBCP2ZG2TC023743	SCBDP4ZG9TC023495
SCBDP4ZG5TC023722	SCBCP2ZG2TC023757	SCBCN13S4TC023725

SCBCN13S5TC023748

SCBCN13S8TC023727

SCBDM33S2TC023712

SCBDN33S4TC023739

SCBDM33S5TC023493