

Field campaign

Topic	Software Update Window Short Drop Deletion Continental GT/GTC 26MY (SC25 /31)
Market area	Bentley: worldwide (2WBE),China 796 VW Import Comp. Ltd (Vico), Beijing (6796)
Brand	Bentley
Transaction No.	2078277/1
Campaign number	ED59
Note	
Type	
US code	

Vehicle data

26MY Continental GT / GTC

Sales types

Type	MY	Brand	Designation	Engine code	Gearbox code	Final drive code
Z23*	2026	E		*	*	*
Z24*	2026	E		*	*	*

Documents

Document name
master.xml
ed59_vinlist.pdf
gt_glass_set_measurement_sheet.pdf
gtc_glass_set_measurement_sheet.pdf

Notes



Technical background

 **CAUTION**

Please refer to all of the instructions within the Work section. The instructions MUST be followed in the exact order as detailed

Remedy

All instructions within the Work section must be conducted as detailed

Software update is available for the left and right hand rear door control modules - Diagnostic address 00BB Driver side and 00BC Passenger side

The software eliminates the rear window short drop function

Customer notification

Please ensure the software instructions within the Service campaign must be conducted at the nearest opportunity

Warranty

Warranty type	710 or 790
Damage service number	ED59
Damage code	00 66
Criterion ID	01

Time to conduct the Software Version Management (SVM) update - Rear door control modules

Labour operation code	01 51 00 00
Time	As per ODIS log Must not exceed 50 TU

Time to conduct initial measurement checks Profile (Y-Axis) and Interlock (X-Axis)

Labour operation code	64 38 02 00
Time	30 TU

 **CAUTION**

The labour codes below must only be claimed if the Profile (Y-Axis) and Interlock (X-Axis) were out of specification (before and / or after the software update was conducted)

Time to conduct the front glass adjustment procedure

Labour operation code	64 40 15 00
Time	140 TU (per side)

Time to conduct the rear glass adjustment procedure

Labour operation code	64 75 15 00
Time	170 TU (per side)

Water leak test

Labour operation code 64 38 01 99 (Use this code when conducting the water leak test)

Time 20 TU

Additional Time Allowance

A 100TU allowance may be claimed only if a SVM update fails to complete successfully. This is intended to cover additional diagnostic or recovery work directly resulting from the failed update. It must not be used for unrelated delays or issues.

ODIS logs must be attached to a DISS ticket for evidence of failure. Claims without valid documentation will be rejected. Warranty Adjudicators will review associated ODIS logs and DISS queries to determine actual software update time.

Parts

Not applicable

Parts supply



NOTICE

Should one or both of the measurements not be within specification the operative must refer to Rep.Gr 64 - Rear door drop glass - To adjust and conduct the front and rear glass adjustment procedure for the affected side left and / or right hand side to completion (all steps)



NOTICE

Adjustment of all side glass requires the interior trim to be removed. Refer to "Rear quarter trim – To remove and fit". Rep. Gr. 70



To carry out the "Rear quarter trim – To remove and fit". Rep. Gr. 70 procedure, the following one-time-use parts must be replaced during the reinstallation:

N 989 244 01 x4 (Front seat belt slider bar fixing x2 each side)

N 989 244 01 x2 (Rear seat belt fixing x1 each side)

Refer to ETKA parts catalogue

Parts despatch control

Not applicable

Repair instructions



Technical background



CAUTION

Please refer to all of the instructions within the Work section. The instructions MUST be followed in the exact order as detailed

Check

If the vehicle is not already listed as repaired in "Repair history" (in Elsa pro), check for the presence of the blue paint completion mark as shown within the Identification section

If neither are evident please conduct the instructions within the Work section to completion.

Parts

Not applicable

Work

CAUTION

Ensure the vehicle is connected to a suitable 12V Lithium Ion battery charger before conducting any work

Section 1 – Initial Glass Set Measurements

NOTICE

Conduct initial glass set measurements and record the results in the model specific measurement document attached (see documents section). After completing the initial measurements, **DO NOT** make any adjustments until after the software update has been completed

CAUTION

When completing the initial glass set measurements strictly adhere to the instructions in section 2



When completing measurements on Continental GTC models, complete a set of measurements with both the roof up and the roof down, as per the attached glass set measurement sheet

Section 2 – Glass Set Measurement Instructions

CAUTION

When completing the glass set measurement procedure, strictly adhere to the instructions below

If unsure about the measurement process follow the video on eAcademy or raise a full technical DISS query.

To eliminate confusion about the usage of WT10549/3 and the Y axis profile measurement between the front and rear windows and how to correctly read/enter the measurements in the tables, please refer to the below images to aid with accurate reading of the Y axis profile when using WT10549/3.

Window Parallel

When the window is parallel take the 2mm step from the tool and minus the 2mm gap between front window and tool = -0mm (as shown in figure 1)



Figure 1

When the rear window is 0mm inboard from the front glass and the windows are parallel, the measurement written as 0mm (figure 2)

Profile (Y-Axis) Roof Down	Vehicle Position	Dimension -X-	Before adjustment
4 50mm from top of division bar	Front drop glass to rear quarter glass	+0 mm / - 2 mm	0mm

Figure 2

Rear Window Inboard

When the rear window is inboard and there is a 2mm step from the tool, when there is no gap between either window and tool (figure 3), the recorded measurement should be -2mm (figure 4)

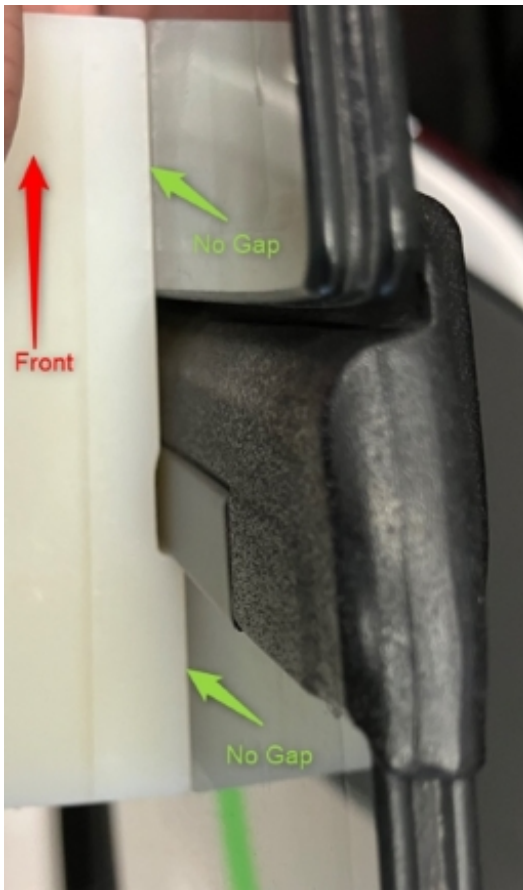


Figure 3

Profile (Y-Axis) Roof Down	Vehicle Position	Dimension -X-	Before adjustment
4 50mm from top of division bar	Front drop glass to rear quarter glass	+0 mm / - 2 mm	-2mm

Figure 4

Rear Window Too Far Inboard

When the rear window is inboard and there is a 2mm step from the tool as well as an additional 1.5mm gap to the window (figure 5), the recorded measurement should be -3.5mm (figure 6).

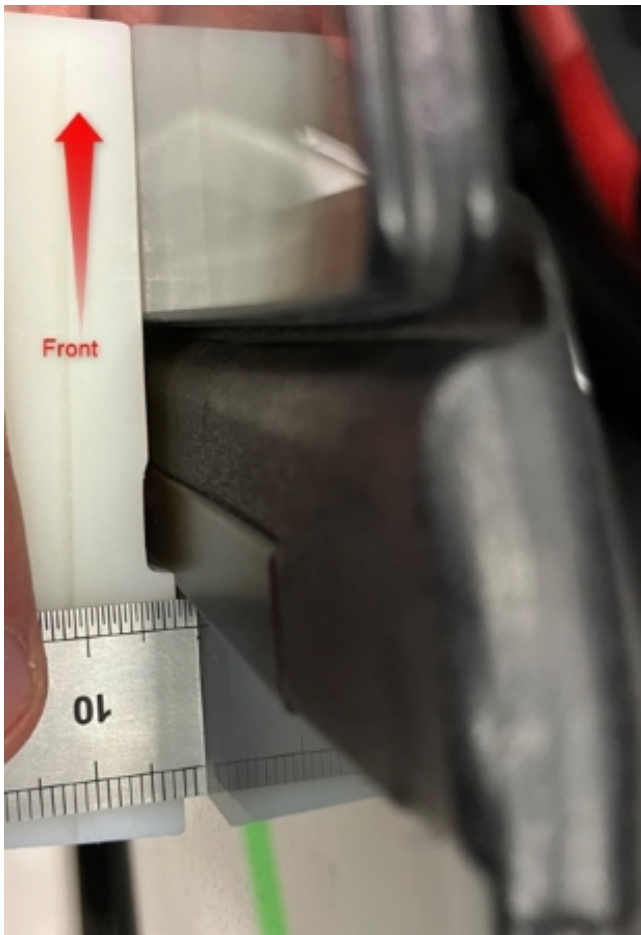


Figure 5

Profile (Y-Axis) Roof Down	Vehicle Position	Dimension -X-	Before adjustment
4 50mm from top of division bar	Front drop glass to rear quarter glass	+0 mm / - 2 mm	-3.5mm

Figure 6

If the tool (WT10549/3) does not sit flush against the rear window then this shows rear window is more than 2mm inboard (more than -2mm), check this by holding the tool on the front window and measuring gap between the rear glass and the tool (as shown in figure 7)



Figure 7

eAcademy Videos

Further explanation can be found in the videos shown in Figure 8, which can be found on eAcademy Digital Learning Hub.

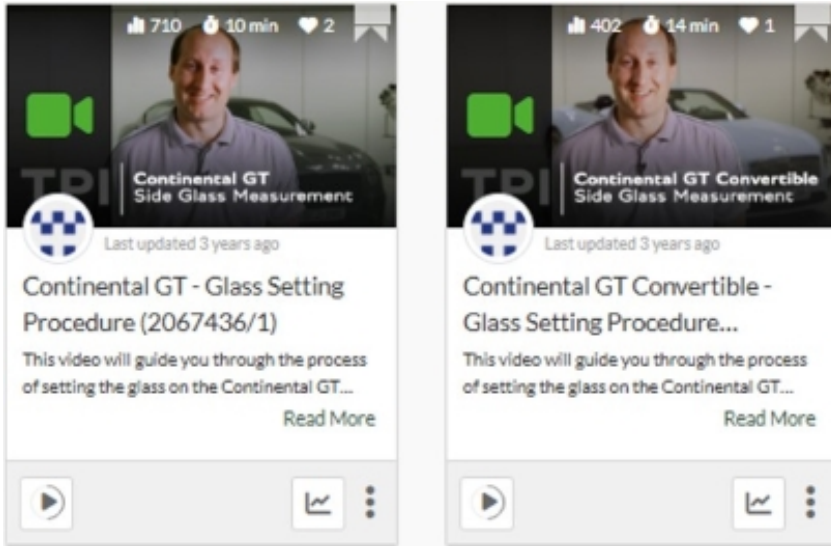


Figure 8

Section 3 - Software update to the rear door control modules 00BB and 00BC - Short drop function elimination

CAUTION

ONLY Chargers that meet the approved specification on the Mandatory Equipment List (available on the Bentley Hub) **MUST** be used.

- The charger must be set to a mode where a **MINIMUM** of 90a is supplied to the battery during the process. Typically, this is known as ‘Power Supply Mode’ or ‘DIAG+ Mode’.
- A voltage of exactly 14.8v must be set and maintained throughout the process.
- Please refer to the manual to ensure that these requirements are met before beginning any SVM update



The following software update eliminates the rear window short drop function

1) Preparation before update

- Conduct a full guided fault find of the vehicle.



If a ‘Check installation list’ pop-up appears, select ‘close’ (Figure 9)

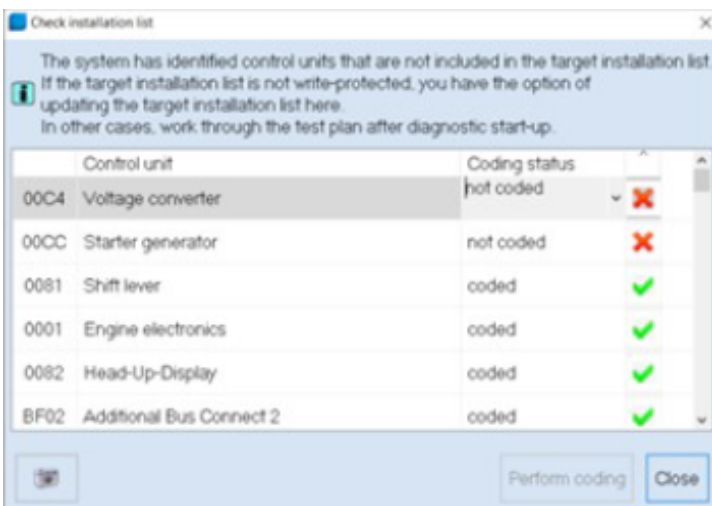


Figure 9

Referring to TPI 2075920, address any unknown faults **BEFORE** conducting any of the below updates.

2) Referring to Figure 10 - Within the Special functions tab - Select SVM - Code Input (Point A)

• Select Perform test (Point B)

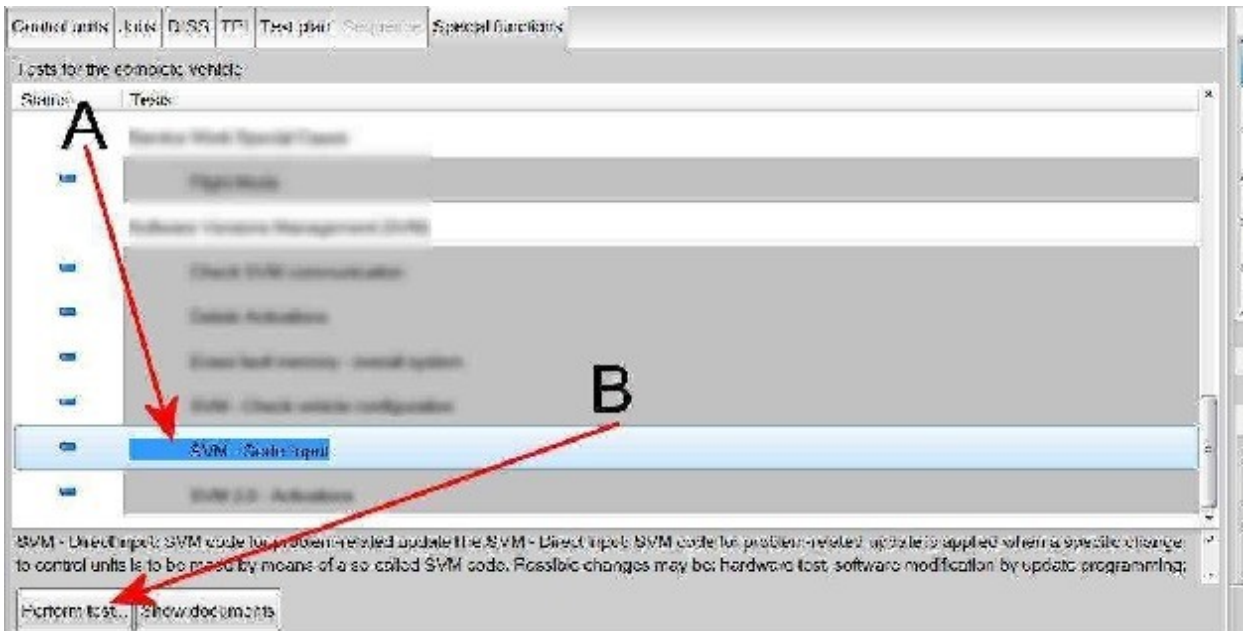


Figure 10

3) Referring to Figure 11 - Enter the SVM code 372WDD02



Figure 11

4) The control modules will automatically be updated one by one, starting with 00BB (Driver rear) and then 00BC (passenger rear)

NOTICE

If you get an error code, such as 8118. Perform a 20 minute CAN sleep, clear DTCs and retry the SVM input operation. If the error persists please raise a full technical DISS query with the log submitted online

5) On completion open the doors and ensure that the rear windows no longer drop.

6) Switch off the ignition

- Remove the diagnostic interface from the OBD port
- Switch off and remove the battery charger from the vehicle

- Close the bonnet, boot and all doors
- Lock the vehicle
- Wait 5 minutes to allow the vehicle to go into bus silence
- When 5 minutes has elapsed, unlock the vehicle and open the driver's door
- Switch on the ignition

7) Once the software update has been conducted continue with the remaining instructions

Hint: The remaining instructions **MUST** be conducted regardless if adjustments were conducted or not

8) Referring to Rep.Gr 64 - Measure and record the points as detailed below on the left and right hand side Profile (Y-Axis) and Interlock (X-Axis).

 **CAUTION**

Strictly adhere to the instructions in section 2 when completing the glass set measurements after the software update has been completed.

Note: Should the measurements for the left and right hand side be within specification please go to step 11 and follow all remaining steps until completion

Or

 **NOTICE**

Should one or both of the measurements not be within specification the operative must refer to Rep.Gr 64 - Rear door drop glass - To adjust and conduct the front and rear glass adjustment procedure for the affected side left and / or right hand side to completion (all steps) and record a final measurement in the attached document

 **CAUTION**

All measurements must be recorded in the attached measurement documentation and saved as they will be required to be attached to a non-technical DISS query at the end of the procedure



FAILURE TO ATTACH THE MEASUREMENTS TO THE DISS WILL RESULT IN NON PAYMENT OF THE WARRANTY CLAIM

Note: Once the adjustment has been conducted please go to step 10 and follow all remaining steps until completion

9) **VERY IMPORTANT** - Referring to Rep.Gr 64 - Side glass - To initialise

 **CAUTION**

When conducting step 11 extra care must be taken to ensure the interior trim is suitably protected, any water which enters the vehicle due to a leak must be dried / cleaned immediately. Ensure all windows, sunroof and convertible roof (where applicable) are fully closed before conducting step 11

10) Conduct a water leak check to ensure that water is not leaking into the vehicles interior - Water leaks must be resolved before handing over the vehicle to the customer

11) Conduct the PDI road test to check for any wind noise related issues

 **NOTICE**

Should the vehicle fail the water leak check or a wind noise check, please raise a full technical DISS query

12) Upon successful completion of the PDI road test, raise a non-technical DISS query titled **SC25/30 X and Y Axis measurement feedback** ensuring the following is attached

• Online ODIS log

• A completed model specific measurement table
--

13) Referring to the Identification section - Apply a blue paint completion mark on the engine partition brace (Figure 12)

Identification

Blue paint completion mark on the engine partition brace



Figure 12

Side glass measurements GT 25MY for Campaign ED18					
Interlock (Z-Axis)	Vehicle Position	Dimension -X-	Before SVM	After SVM	After adjustment (if required)
A 50 mm from division bar	Front quarter glass	7.5 mm ± 1 mm			
B 150 mm from division bar	Front of door drop glass	8 mm ± 1 mm			
C 50 mm from rear of door drop glass	Rear of door drop glass	8 mm ± 1 mm			
D 50 mm from rear drop glass division bar	Front of rear quarter glass	8 mm ± 1 mm			
E 50 mm from rearmost section of rear drop glass	Rear of rear quarter glass	8 mm ± 1 mm			
Interlock (X-Axis)	Vehicle Position	Dimension -X-	Before SVM	After SVM	After adjustment (if required)
4 50 mm from the top of the window	Rear door quarter glass strip to front door drop glass edge	11 mm ± 1 mm			
5 50 mm from the waistrail seal	Rear door quarter glass strip to front door drop glass edge	11 mm ± 1 mm			
Profile (Y-Axis)	Vehicle Position	Dimension -X-	Before SVM	After SVM	After adjustment (if required)
1 50 mm from division bar	Front quarter glass	10 mm ± 1 mm			
2 150 mm from division bar	Front of door drop glass	10 mm ± 2 mm			
3 50 mm from rear of door drop glass	Rear of door drop glass	10 mm ± 2 mm			
6 50 mm from rear drop glass division bar	Front of rear quarter glass	10 mm ± 2 mm			
7 50 mm from rearmost section of rear drop glass	Rear of rear quarter glass	10 mm ± 2 mm			
8 50mm forwards of rear of front drop glass (waist rail gap)	Rear of door drop glass	5mm ± 1mm			
9 50mm rearward of front of rear drop glass (waist rail gap)	Front of rear quarter glass	5mm ± 1mm			
Profile (Y-Axis)	Vehicle Position	Dimension -X-	Before SVM	After SVM	After adjustment (if required)
4 50mm from top of division bar	Front drop glass to rear quarter glass	+0 mm / - 2.5 mm			
5 50mm from bottom of division bar	Front drop glass to rear quarter glass	+0 mm / - 2 mm			

Side glass measurements GTC 25MY for Campaign ED18					
Interlock (Z-Axis)	Vehicle Position	Dimension -X-	Before SVM	After SVM	After adjustment (if required)
1 50 mm from division bar	Front quarter glass	7.5 mm ± 1 mm			
2 100 mm from division bar	Front of door drop glass	8.5 mm ± 1 mm			
3 50 mm from rear of door drop glass	Rear of door drop glass	8.5 mm ± 1 mm			
6 50 mm from rear drop glass division bar	Front of rear quarter glass	8.5 mm ± 1 mm			
7 100 mm from where the hood meets the brightware	Rear of rear quarter glass	10 — 16mm			
Interlock (X-Axis) Roof Up	Vehicle Position	Dimension -X-	Before SVM	After SVM	After adjustment (if required)
4 50 mm from the top of the window	Rear door quarter glass strip to front door drop glass edge	11 mm ± 1 mm			
5 50 mm from the waistrail seal	Rear door quarter glass strip to front door drop glass edge	11 mm ± 1 mm			
Interlock (X-Axis) Roof Down	Vehicle Position	Dimension -X-	Before SVM	After SVM	After adjustment (if required)
4 50 mm from the top of the window	Rear door quarter glass strip to front door drop glass edge	11 mm ± 1 mm			
5 50 mm from the waistrail seal	Rear door quarter glass strip to front door drop glass edge	11 mm ± 1 mm			
Profile (Y-Axis)	Vehicle Position	Dimension -X-	Before SVM	After SVM	After adjustment (if required)
1 50 mm from division bar	Front quarter glass	10 mm ± 1 mm			
2 100 mm from division bar	Front of door drop glass	14 mm ± 2 mm			
8 50mm forwards of rear of front drop glass (waist rail gap)	Rear of door drop glass	5mm ± 1mm			
9 50mm rearward of front of rear drop glass (waist rail gap)	Front of rear quarter glass	5mm ± 1mm			
Profile (Y-Axis) Roof Up	Vehicle Position	Dimension -X-	Before SVM	After SVM	After adjustment (if required)
4 50mm from top of division bar	Front drop glass to rear quarter glass	+0 mm / - 2.5 mm			
5 50mm from bottom of division bar	Front drop glass to rear quarter glass	+0 mm / - 2 mm			
Profile (Y-Axis) Roof Down	Vehicle Position	Dimension -X-	Before SVM	After SVM	After adjustment (if required)
4 50mm from top of division bar	Front drop glass to rear quarter glass	+0 mm / - 2.5 mm			
5 50mm from bottom of division bar	Front drop glass to rear quarter glass	+0 mm / - 2 mm			

SCBCB13S0TC024346	SCBCM13S3TC023699	SCBCM13S7TC024113
SCBCB13S2TC024350	SCBCM13S3TC023783	SCBCM13S7TC024130
SCBCB13S2TC024364	SCBCM13S3TC023959	SCBCM13S7TC024239
SCBCB13S5TC024133	SCBCM13S3TC024092	SCBCM13S7TC024337
SCBCB13S6TC024304	SCBCM13S3TC024111	SCBCM13S7TC024368
SCBCB13S7TC024375	SCBCM13S3TC024173	SCBCM13S8TC023827
SCBCG13S8TC024340	SCBCM13S3TC024190	SCBCM13S8TC023889
SCBCJ1ZG7TC024351	SCBCM13S4TC023842	SCBCM13S8TC023939
SCBCM13S0TC023854	SCBCM13S4TC023971	SCBCM13S8TC024167
SCBCM13S0TC023997	SCBCM13S4TC023999	SCBCM13S9TC023741
SCBCM13S0TC024079	SCBCM13S4TC024036	SCBCM13S9TC023772
SCBCM13S0TC024096	SCBCM13S4TC024263	SCBCM13S9TC023884
SCBCM13S0TC024227	SCBCM13S4TC024358	SCBCM13S9TC023951
SCBCM13S0TC024356	SCBCM13S5TC023767	SCBCM13S9TC024002
SCBCM13S1TC023734	SCBCM13S5TC023851	SCBCM13S9TC024128
SCBCM13S1TC023751	SCBCM13S5TC023901	SCBCM13S9TC024176
SCBCM13S1TC023877	SCBCM13S5TC024210	SCBCM13S9TC024257
SCBCM13S1TC023961	SCBCM13S6TC023731	SCBCM13SXTC023831
SCBCM13S1TC024088	SCBCM13S6TC023809	SCBCM13SXTC024011
SCBCM13S1TC024236	SCBCM13S6TC023857	SCBCM13SXTC024042
SCBCM13S1TC024284	SCBCM13S6TC023860	SCBCM13SXTC024056
SCBCM13S1TC024348	SCBCM13S6TC023907	SCBCM13SXTC024087
SCBCM13S2TC023824	SCBCM13S6TC023969	SCBCM13SXTC024090
SCBCM13S2TC023872	SCBCM13S6TC024023	SCBCM13SXTC024137
SCBCM13S2TC023922	SCBCM13S6TC024281	SCBCM13SXTC024171
SCBCM13S2TC023953	SCBCM13S7TC023785	SCBCM13SXTC024221
SCBCM13S2TC024052	SCBCM13S7TC023866	SCBCM1ZGXTC024156
SCBCM13S2TC024116	SCBCM13S7TC023897	SCBCN13S0TC023947
SCBCM13S2TC024150	SCBCM13S7TC023964	SCBCN13S0TC023995
SCBCM13S2TC024181	SCBCM13S7TC023981	SCBCN13S0TC024063
SCBCM13S2TC024228	SCBCM13S7TC024029	SCBCN13S0TC024080

SCBCN13S0TC024094	SCBCN13S5TC024141	SCBCP2ZG0TC024194
SCBCN13S0TC024290	SCBCN13S5TC024172	SCBCP2ZG0TC024289
SCBCN13S1TC023732	SCBCN13S6TC023791	SCBCP2ZG1TC023698
SCBCN13S1TC024105	SCBCN13S6TC024021	SCBCP2ZG1TC023801
SCBCN13S1TC024184	SCBCN13S6TC024066	SCBCP2ZG1TC023846
SCBCN13S1TC024315	SCBCN13S6TC024097	SCBCP2ZG1TC023989
SCBCN13S2TC023979	SCBCN13S7TC023816	SCBCP2ZG1TC024060
SCBCN13S2TC024100	SCBCN13S7TC023900	SCBCP2ZG1TC024107
SCBCN13S2TC024114	SCBCN13S7TC024089	SCBCP2ZG2TC023743
SCBCN13S2TC024145	SCBCN13S8TC023727	SCBCP2ZG2TC023757
SCBCN13S2TC024243	SCBCN13S8TC024005	SCBCP2ZG2TC023760
SCBCN13S2TC024274	SCBCN13S8TC024103	SCBCP2ZG2TC023788
SCBCN13S2TC024310	SCBCN13S8TC024215	SCBCP2ZG2TC023919
SCBCN13S3TC023781	SCBCN13S8TC024277	SCBCP2ZG2TC023936
SCBCN13S3TC023957	SCBCN13S9TC023817	SCBCP2ZG2TC023967
SCBCN13S3TC023991	SCBCN13S9TC023848	SCBCP2ZG3TC023704
SCBCN13S3TC024073	SCBCN13S9TC023879	SCBCP2ZG3TC023864
SCBCN13S3TC024235	SCBCN13S9TC024160	SCBCP2ZG3TC023914
SCBCN13S3TC024266	SCBCN13S9TC024224	SCBCP2ZG3TC023945
SCBCN13S4TC023708	SCBCN13SXTTC023986	SCBCP2ZG3TC023962
SCBCN13S4TC023725	SCBCN13SXTTC024085	SCBCP2ZG3TC023976
SCBCN13S4TC023904	SCBCN13SXTTC024197	SCBCP2ZG3TC024075
SCBCN13S4TC024180	SCBCN13SXTTC024409	SCBCP2ZG3TC024206
SCBCN13S4TC024213	SCBCN1ZG6TC024328	SCBCP2ZG4TC023887
SCBCN13S4TC024292	SCBCP2ZG0TC023711	SCBCP2ZG4TC024019
SCBCN13S4TC024342	SCBCP2ZG0TC023806	SCBCP2ZG4TC024151
SCBCN13S5TC023720	SCBCP2ZG0TC023837	SCBCP2ZG4TC024229
SCBCN13S5TC023748	SCBCP2ZG0TC023868	SCBCP2ZG4TC024232
SCBCN13S5TC023829	SCBCP2ZG0TC023921	SCBCP2ZG4TC024280
SCBCN13S5TC023913	SCBCP2ZG0TC024034	SCBCP2ZG5TC023736
SCBCN13S5TC024009	SCBCP2ZG0TC024146	SCBCP2ZG5TC023798

SCBCP2ZG5TC023820	SCBCP2ZG9TC024016	SCBCR2ZG9TC023779
SCBCP2ZG5TC023834	SCBCP2ZG9TC024260	SCBCR2ZG9TC023796
SCBCP2ZG5TC024031	SCBCP2ZG9TC024386	SCBCR2ZG9TC023927
SCBCP2ZG5TC024143	SCBCP2ZG9TC023764	SCBCR2ZG9TC024110
SCBCP2ZG5TC024241	SCBCP2ZG9TC023778	SCBCR2ZG9TC023709
SCBCP2ZG6TC023762	SCBCP2ZG9TC023974	SCBDJ33S9TC023909
SCBCP2ZG6TC023874	SCBCP2ZG9TC024008	SCBDM33S0TC023742
SCBCP2ZG6TC023938	SCBCP2ZG9TC024025	SCBDM33S0TC023840
SCBCP2ZG6TC023941	SCBCP2ZG9TC024123	SCBDM33S0TC024261
SCBCP2ZG6TC024054	SCBCP2ZG9TC024154	SCBDM33S1TC023815
SCBCP2ZG6TC024250	SCBCP2ZG9TC024199	SCBDM33S1TC024155
SCBCP2ZG6TC024314	SCBCP2ZG9TC024218	SCBDM33S1TC024365
SCBCP2ZG7TC023690	SCBCR2ZG0TC023718	SCBDM33S2TC023712
SCBCP2ZG7TC023706	SCBCR2ZG0TC023895	SCBDM33S2TC023774
SCBCP2ZG7TC023723	SCBCR2ZG0TC024044	SCBDM33S2TC023855
SCBCP2ZG7TC023754	SCBCR2ZG1TC023775	SCBDM33S2TC023886
SCBCP2ZG7TC023835	SCBCR2ZG2TC023803	SCBDM33S2TC023970
SCBCP2ZG7TC023916	SCBCR2ZG2TC023882	SCBDM33S2TC024178
SCBCP2ZG7TC023933	SCBCR2ZG2TC024126	SCBDM33S3TC024027
SCBCP2ZG7TC024287	SCBCR2ZG3TC023695	SCBDM33S3TC024061
SCBCP2ZG8TC023794	SCBCR2ZG3TC023745	SCBDM33S3TC024240
SCBCP2ZG8TC023813	SCBCR2ZG3TC023812	SCBDM33S4TC023789
SCBCP2ZG8TC023911	SCBCR2ZG3TC024295	SCBDM33S4TC023792
SCBCP2ZG8TC023925	SCBCR2ZG5TC023892	SCBDM33S4TC023937
SCBCP2ZG8TC024041	SCBCR2ZG5TC024203	SCBDM33S4TC024182
SCBCP2ZG8TC024069	SCBCR2ZG6TC023738	SCBDM33S5TC023493
SCBCP2ZG8TC024072	SCBCR2ZG7TC023702	SCBDM33S5TC024109
SCBCP2ZG8TC024122	SCBCR2ZG7TC024039	SCBDM33S5TC024207
SCBCP2ZG8TC024248	SCBCR2ZG8TC023692	SCBDM33S6TC023714
SCBCP2ZG9TC023769	SCBCR2ZG8TC023949	SCBDM33S6TC023955
SCBCP2ZG9TC023822	SCBCR2ZG8TC024177	SCBDM33S6TC024104

SCBDM33S6TC024166	SCBDN33S4TC024275	SCBDP4ZG4TC023808
SCBDM33S6TC024300	SCBDN33S5TC024219	SCBDP4ZG4TC023811
SCBDM33S7TC023883	SCBDN33S5TC024317	SCBDP4ZG4TC023825
SCBDM33S7TC024144	SCBDN33S6TC023838	SCBDP4ZG4TC023923
SCBDM33S7TC024161	SCBDN33S6TC023905	SCBDP4ZG4TC023940
SCBDM33S8TC024170	SCBDN33S7TC023752	SCBDP4ZG4TC024070
SCBDM33S8TC024279	SCBDN33S7TC024030	SCBDP4ZG4TC024098
SCBDM33S9TC023691	SCBDN33S7TC024223	SCBDP4ZG4TC024148
SCBDM33S9TC023786	SCBDN33S7TC024254	SCBDP4ZG4TC024196
SCBDM33S9TC023805	SCBDN33S8TC024053	SCBDP4ZG5TC023719
SCBDM33S9TC023836	SCBDN33S8TC024201	SCBDP4ZG5TC023722
SCBDM33S9TC023870	SCBDN33S9TC023963	SCBDP4ZG5TC023896
SCBDM33S9TC023898	SCBDN33SXTTC024118	SCBDP4ZG5TC023946
SCBDM33S9TC023920	SCBDP4ZG0TC023935	SCBDP4ZG5TC023977
SCBDM33S9TC024078	SCBDP4ZG0TC024101	SCBDP4ZG5TC023980
SCBDM33S9TC024131	SCBDP4ZG0TC024244	SCBDP4ZG5TC024014
SCBDM33S9TC024212	SCBDP4ZG0TC024325	SCBDP4ZG5TC024059
SCBDM33S9TC024226	SCBDP4ZG1TC023703	SCBDP4ZG5TC024076
SCBDM33SXTTC023697	SCBDP4ZG1TC023765	SCBDP4ZG5TC024112
SCBDM33SXTTC023747	SCBDP4ZG1TC023880	SCBDP4ZG5TC024272
SCBDM33SXTTC024168	SCBDP4ZG1TC023944	SCBDP4ZG5TC024286
SCBDM33SXTTC024378	SCBDP4ZG1TC024057	SCBDP4ZG5TC024398
SCBDM3ZG2TC024247	SCBDP4ZG2TC023726	SCBDP4ZG6TC023700
SCBDN33S0TC023799	SCBDP4ZG2TC023984	SCBDP4ZG6TC023759
SCBDN33S0TC024158	SCBDP4ZG2TC024004	SCBDP4ZG6TC023843
SCBDN33S0TC024175	SCBDP4ZG3TC023735	SCBDP4ZG6TC024006
SCBDN33S1TC023780	SCBDP4ZG3TC023802	SCBDP4ZG6TC024037
SCBDN33S3TC023859	SCBDP4ZG3TC023850	SCBDP4ZG6TC024040
SCBDN33S3TC024204	SCBDP4ZG3TC023928	SCBDP4ZG6TC024068
SCBDN33S4TC023739	SCBDP4ZG3TC023993	SCBDP4ZG6TC024135
SCBDN33S4TC024082	SCBDP4ZG3TC024349	SCBDP4ZG6TC024152

SCBDP4ZG6TC024216	SCBDR4ZG0TC024268
SCBDP4ZG6TC024233	SCBDR4ZG1TC023694
SCBDP4ZG7TC023821	SCBDR4ZG1TC023873
SCBDP4ZG7TC023902	SCBDR4ZG1TC023890
SCBDP4ZG7TC023950	SCBDR4ZG2TC023932
SCBDP4ZG7TC024127	SCBDR4ZG2TC024045
SCBDP4ZG7TC024189	SCBDR4ZG4TC023771
SCBDP4ZG8TC023729	SCBDR4ZG4TC023818
SCBDP4ZG8TC023777	SCBDR4ZG4TC024323
SCBDP4ZG8TC023942	SCBDR4ZG5TC023746
SCBDP4ZG8TC023987	SCBDR4ZG5TC023973
SCBDP4ZG8TC024024	SCBDR4ZG6TC023996
SCBDP4ZG8TC024265	SCBDR4ZG7TC023716
SCBDP4ZG9TC023495	SCBDR4ZG7TC023876
SCBDP4ZG9TC023707	SCBDR4ZG7TC024140
SCBDP4ZG9TC023867	SCBDR4ZG8TC024065
SCBDP4ZG9TC023917	SCBDR4ZG9TC024091
SCBDP4ZG9TC024047	
SCBDP4ZG9TC024050	
SCBDP4ZG9TC024338	
SCBDP4ZGXTTC023733	
SCBDP4ZGXTTC023795	
SCBDP4ZGXTTC023828	
SCBDP4ZGXTTC023845	
SCBDP4ZGXTTC023862	
SCBDP4ZGXTTC023893	
SCBDP4ZGXTTC023912	
SCBDP4ZGXTTC023926	
SCBDP4ZGXTTC024185	
SCBDR4ZG0TC023833	
SCBDR4ZG0TC024237	