



SIM 51 16 16

2025-07-16

CAVITY PROTECTION WAX LEAKING OUT OF HOOD

This Service Information Bulletin (Revision 5) replaces SI M51 16 16 dated July 2025.

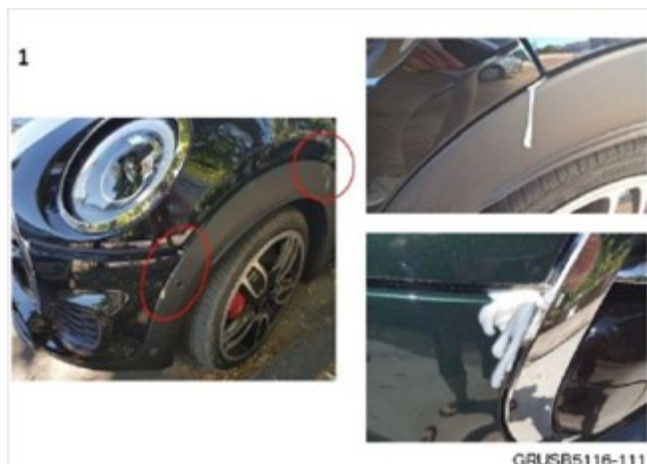
What's New:

- Model added

<input type="checkbox"/>	THIS REPAIR IS MOBILE FRIENDLY
--------------------------	--------------------------------

MODEL

E-Series	Model Description
F54	MINI Clubman
F55	MINI Hardtop 4 Door
F56	MINI Hardtop 2 Door
F57	MINI Convertible
F60	MINI Countryman
F65	MINI Hardtop 4 Door

SITUATION

Cavity protection applied to the underside of the hood is leaking out onto the wheel arch trim and grille.

CAUSE

Improper application of cavity protection wax during vehicle production.

CORRECTION

Remove the current protection and reapply it more accurately.

PROCEDURE

For conditions that are similar to the situation described, refer to the attachment for detailed repair information.

PARTS INFORMATION

To determine the part number that applies to the specific vehicle being repaired, enter the VIN/chassis number into either ETK or AIR, this will consider the specific equipment and/or options that are fitted to the vehicle.

Part Number	Description	Quantity
83 12 0390086	Cavity Protection Wax Remover (500 mL)	Sublet as needed
83 42 2457337	Cavity Wax Spray (400 mL)	Sublet as needed

Copyright ©2025 MINI USA, a division of BMW of North America, LLC. All Rights Reserved

CLAIM INFORMATION

Covered under the terms of the MINI New Passenger Car Limited Warranty.

Repair Code:	5197024900	Hollow cavity protection Overflowing / sloshing over
---------------------	-------------------	---

Obtain the flat rate unit (FRU) allowances for the following that applies.

Labor Operation	Description	Labor Allowance
41 61 000	Removing and installing engine compartment lid (Main Work)	As applicable
Or:		
41 61 600	Removing and installing engine compartment lid (Plusposition Work)	As applicable
And:		
51 00 001*	Localizing body complaint(s): Work time to confirm the issue described in this bulletin is occurring (This applies to all dealers)	2 FRU
And:		
51 99 000	Work time for removing excess cavity wax, and reapplying correct amount of cavity protection wax.	8 FRU

Labor operation code 41 61 000 is a Main labor operation. If you are using a Main labor code for another repair, use the Plus code labor operation 41 61 600 instead.

Work time labor operation codes 51 00 001 and 51 99 000 are not considered Main labor operations.

The Diagnosis Worktime Flat Rate 00 58 500 does not apply to this repair.

And, as needed:

Sublet – Bulk Supply Materials

Sublet Code 4	Reimbursement for the repair-related bulk supply materials (Do not use the MINI part numbers for claim submission)	See the sublet reimbursement calculations below
----------------------	--	---

Sublet reimbursement calculation for claiming the applicable repair-related bulk materials (MINI part numbers) is at the dealer net price amount for the proportional quantities used plus your dealer's handling.

Enter this material cost in sublet and itemize the amount on the repair order and in claim comment section.

(* Based on which one applies to your dealer, please refer to **SI M01 01 20** or **M01 04 20** for the applicable procedure for documenting, and explaining, on the RO and in the claim comments, your diagnosis work time (WT), job/repair work time (WT), and the vehicle repairs your dealer performed, unless otherwise required by State law.

BMW Group's AIR Application Resource for Flat Rate Labor Operation Codes

To obtain the corresponding flat rate unit (FRU) allowance information from the BMW Group AIR application resource, start by entering the Chassis Number (last seven (7) characters of the VIN), and click on the "Search" icon. If the "Vehicle Selection" window displays two or more model possible vehicle choices, select the applicable Model, or enter the full VIN (17 characters) instead to proceed. Click on the "Flat Rate Units" button and enter a flat rate labor operation code number "without spaces" in the field to the right, click on the "Search" icon to display the corresponding listing of "Flat rate unit group details" that are available and their corresponding FRU allowances.

Copyright ©2025 MINI USA, a division of BMW of North America, LLC. All Rights Reserved

AIR's Main Group (MG) 41 with Inclusive Mechanical Work (R).

Applicable MG 41 flat rate labor operation codes will show a secondary "R FRU" value that is listed below the primary FRU allowance. This identifies the portion of "remove and install assemblies/body components" work that is included in that specific MG 41 flat rate labor operation code. Under no circumstances should this secondary FRU value amount be added to the overall job/work procedures and claimed.

FEEDBACK REGARDING THIS BULLETIN

Technical Feedback	To submit feedback for the technical topic of this bulletin: Submit your feedback in the rating box at the top of this bulletin
Warranty Feedback	To submit feedback for the CLAIMS section of this bulletin: Submit an IDS ticket to the Warranty Department, or use the chat available in the Warranty Documentation Portal
Parts Feedback	To submit feedback for the PARTS section of this bulletin: Submit an IDS ticket to the Parts Department

Supporting Materials

[picture_as_pdf Attachment A SIM51 16 16.pdf](#)

