 <b>HYUNDAI</b> <b>Technical Service Bulletin</b>	GROUP	NUMBER
	<b>CAMPAIGN</b>	<b>25-01-010H-1</b>
	DATE	MODEL(S)
	<b>JULY 2025</b>	<b>SEE BELOW</b>
<b>SUBJECT:</b> BMS SOFTWARE UPDATE FOR DTC P1BB200: 12V BATTERY OVER VOLTAGE WARNING (SERVICE CAMPAIGN 9B4)		

This TSB supersedes 25-01-010H to update the Op. Code on page 2, and add vehicle emission related documents, including campaign sticker and proof of correction card, on pages 2, 8, and 9.

**★ IMPORTANT**

Dealers must perform this service campaign on all affected vehicles prior to customer retail delivery and whenever an affected vehicle is in the shop for any maintenance or repair.

Access the “Vehicle Information” screen via WEBDCS to identify open campaigns.

**Description:** This bulletin provides the procedure to update the software for the Battery Management System (BMS) on certain Elantra Hybrid (CN7 HEV), Sonata Hybrid (DN8 HEV), and Tucson Hybrid (NX4 HEV) vehicles that may exhibit a warning light with DTC P1BB200 and enter Limp Mode.

**DTC Description:** P1BB200 – 12V Lithium Battery Cell Voltage High

**Applicable Vehicles (Certain):**

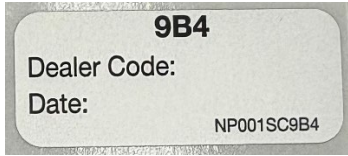

- 2021–2023MY Elantra Hybrid (CN7 HEV) produced from 12/15/2020 - 02/13/2023
- 2020-2022MY Sonata Hybrid (DN8 HEV) produced from 01/29/2020 - 03/08/2022
- 2022–2024MY Tucson Hybrid (NX4 HEV) produced from 01/20/2021 - 12/18/2023

**GDS Information:**

System	Event #	Description
BMS	796	DN8 HEV 12V LITHIUM BATTERY OVER VOLTAGE WARNING LIGHT IMPROVEMENT (P1BB20)
	1037	CN7 HEV 12V LITHIUM BATTERY OVER VOLTAGE WARNING LIGHT IMPROVEMENT
	1038	NX4 HEV 12V LITHIUM BATTERY OVER VOLTAGE WARNING LIGHT IMPROVEMENT

(\*or use a later available event as listed in the GDS **BMS** Update screen if one is available.)

**Parts Information:**

Model	Part Name	Part Number	Figure	Remarks
Elantra Hybrid (CN7 HEV)	Campaign Sticker	NP001-SC9B4		Apply to all vehicles regardless of state
Sonata Hybrid (DN8 HEV)				
Tucson Hybrid (NX4 HEV)	Vehicle Emission Recall - Proof of Correction Card	NP050-09006		Order only for states: CA, CO, CT, DE, ME, MD, MA, NJ, NY, OR, PA, RI, VT, WA

**Warranty Information:**

Model	Op. Code	Operation	Op. Time	Causal Part	Nature Code	Cause Code
Elantra Hybrid (CN7 HEV)	30D163R1	BMS Software Update and Campaign Sticker Application	0.4 M/H	37513-BY000	114	ZZ3
Sonata Hybrid (DN8 HEV)				37513-L7000		
Tucson Hybrid (NX4 HEV)				37513-P0000		

**NOTE 1:** Submit claim on Claim Entry Screen as “Campaign” type.

**NOTE 2:** If a part is found in need of replacement while performing this campaign and the affected part is still under warranty, submit a separate claim using the same repair order. If the affected part is out of warranty, submit a Prior Approval request for goodwill consideration prior to performing the work.

**NOTE 3:** Op times include VIN, Mileage, and photo capture of the “ECU update complete” screen as outlined in the Digital Documentation Policy.

**ROM ID Information: Event 796**

Model	MY	System	ECU Part Number	ROM ID	
				Old	New
Sonata Hybrid (DN8 HEV)	2020 - 2022	BMS	37513-L5000	5000	5520
				5200	
				5400	
				5420	
				5440	
				5460	
				5480	
				5500	
			37513-L7000	5600	5740
				5620	
				5640	
				5680	

**ROM ID Information: Event 1037**

Model	MY	System	ECU Part Number	ROM ID	
				Old	New
Elantra Hybrid (CN7 HEV)	2021 - 2023	BMS	37513-BY000	6000	6080
				6020	
				6040	
				6060	

**ROM ID Information: Event 1038**

Model	MY	System	ECU Part Number	ROM ID	
				Old	New
Tucson Hybrid (NX4 HEV)	2022 – 2024	BMS	37513-P0000	6000	6120
				6020	
				6040	
				6060	
				6100	

## Service Procedure:

### DIGITAL DOCUMENTATION



This TSB includes Repair validation photos. Refer to the latest Warranty Digital Documentation Policy for requirements.

### NOTICE

**You must initially perform the GDS ECU update in Auto Mode.**

- If the ECU update starts but then fails in Auto Mode, perform the update in Manual Mode to recover.

### NOTICE

Ensure the vehicle's battery charge is **above 11.0 Volts** and the tablet's battery charge is **above 30%** before performing a software update to avoid the update from failing.

### *i* Information

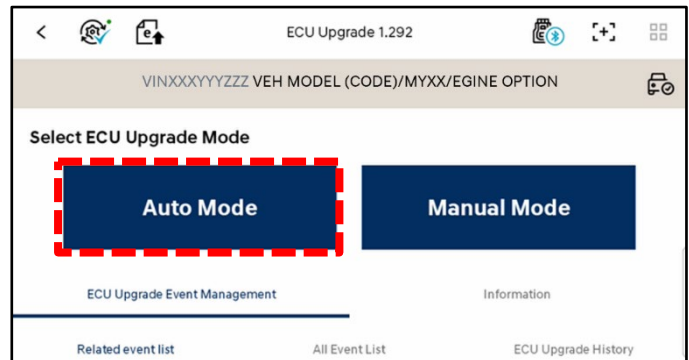
- Turn **OFF** all lamps (do **NOT** leave head lamp switch in auto mode) and all accessories.
- Perform update with the ignition switch in the **ON** position.
- Do **NOT** disconnect any cables connected to the vehicle or scan tool during update.
- Do **NOT** start the engine OR place in **Ready** mode during update.
- Do **NOT** turn **OFF** the ignition switch during update.

## ECU Update Procedure

1. Perform the ECU update in **Auto Mode**.

### *i* Information

Refer to **TSB # 25-GI-011H**, "ECU Update Procedure for Tablet-Based GDS-Smart", for additional information.



2. Verify the ROM ID by selecting the **BMS** system to scan the vehicle's current ROM ID.

### NOTICE

Check the current ROM ID version and compare it to the ROM ID Information table before attempting to perform the software update.

### NOTICE

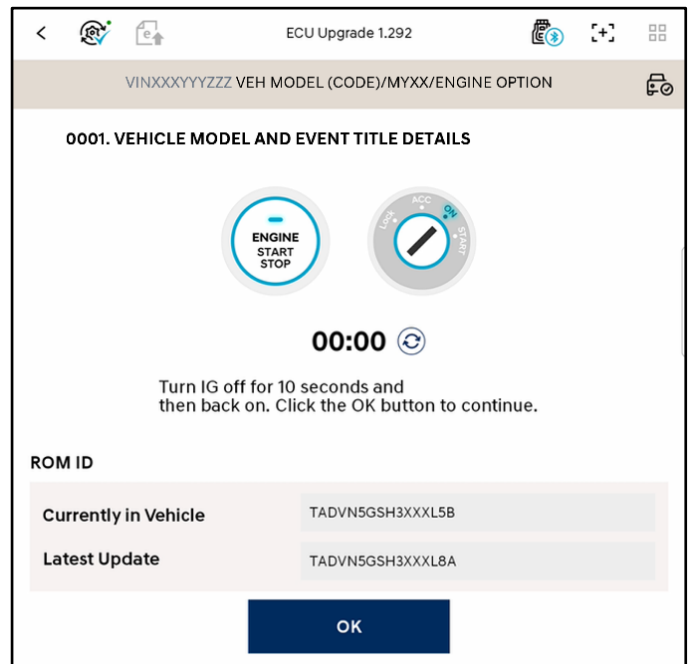
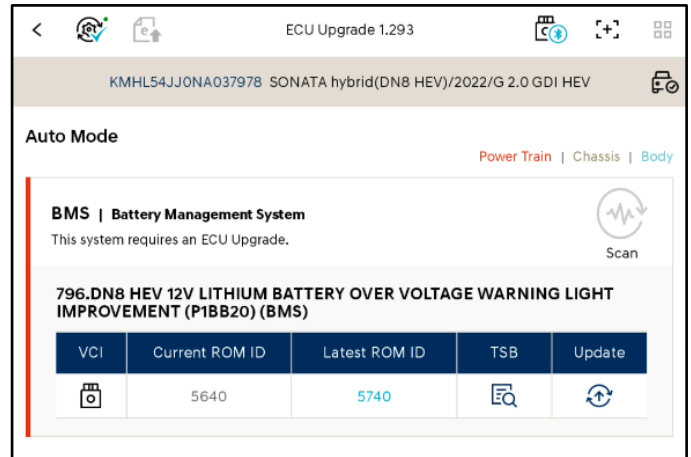
If the update fails, remove the power connector from the in-cabin fuse box for at least **5 seconds**. Alternatively, disconnect the negative (-) **12V** battery terminal, wait at least **5 seconds**. Reassemble and retry the update.

3. After the ECU update process shows 100% complete, follow the prompts on the screen to cycle the ignition **OFF** for at least **10 seconds** to reset the control unit (certain models may take up to **30 seconds**).



### Information

Use the **Refresh** button to reset the timer.

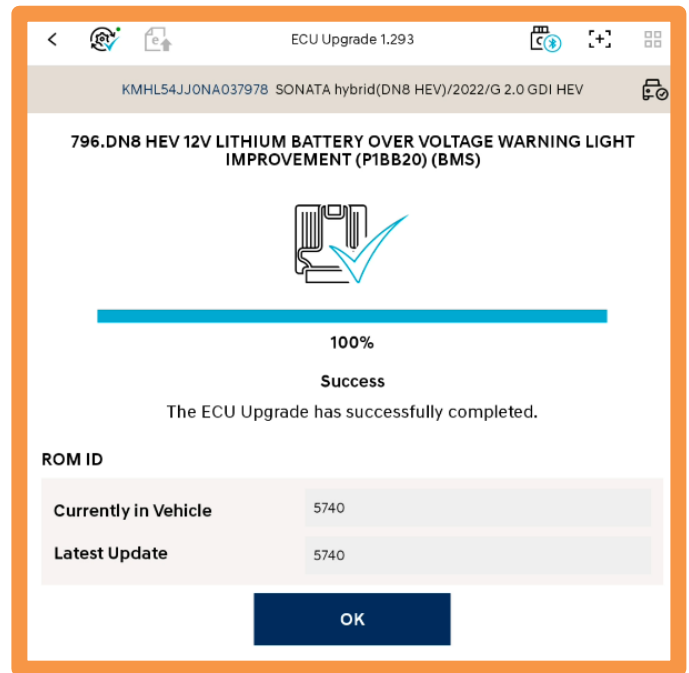


4.

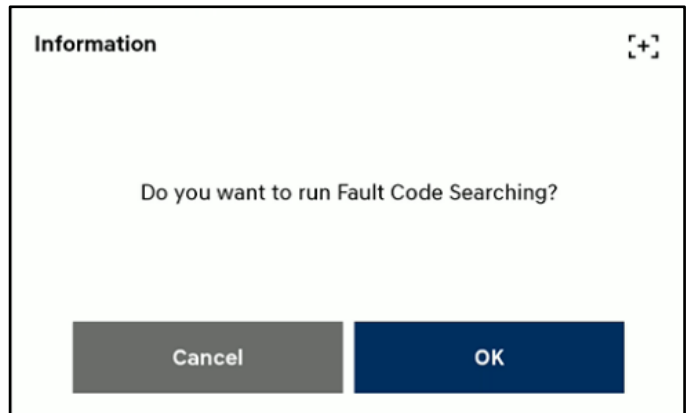
**DIGITAL DOCUMENTATION**



Take a screenshot of the ECU update complete screen using your tablet and upload to STUI.



5. After the ECU update process shows 100% complete, cycle the ignition key to **OFF** for at least **10 seconds** to reset the control unit.
6. Perform an **All Systems Fault Code** search and erase DTC history that had incidentally occurred from the ECU update.



7. Start the vehicle in **Ready** mode to confirm proper operation of the vehicle.

**i Information**

For multiple ECU updates, go back to the Auto Mode screen to view all updates available in one screen.

8. Proceed to **Campaign Sticker Application (for All Vehicles)** on page 8.

## NOTICE

If the ECU update fails in Auto Mode, perform the update in Manual Mode using the password(s) below.

### Manual Mode Password: Event # 796

ECM Menu	Password
DN8 HEV BMS 37513-L5000	5000
DN8 HEV BMS 37513-L7000	7000

### Manual Mode Password: Event # 1037

ECM Menu	Password
CN7 HEV BMS 37513-BY000	7531

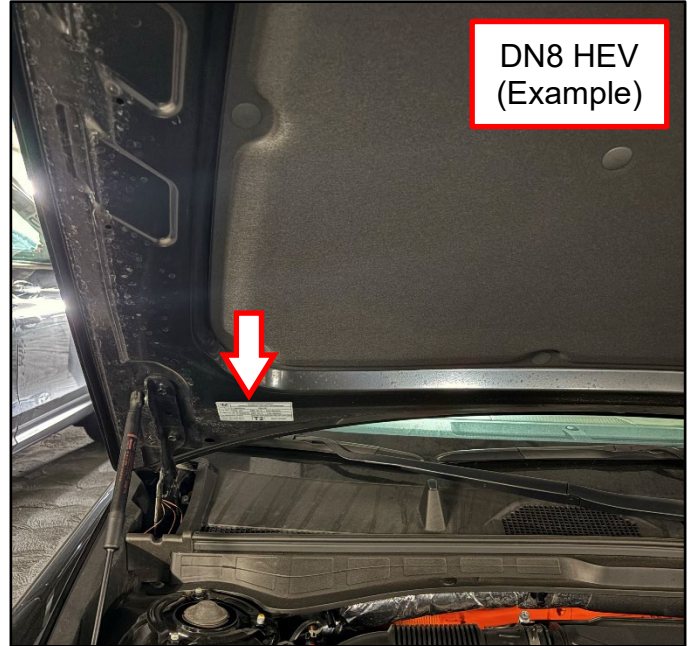
### Manual Mode Password: Event # 1038

ECM Menu	Password
NX4 HEV BMS 37513-P0000	3000

## Campaign Sticker Application (for All Vehicles)

1. Fill in the Dealer Code and Date on the Campaign Sticker, and apply adjacent to the existing Emission Label, on the underside of the hood, as shown.

Be sure to clean the mounting surface to ensure proper label adhesion.



- 2.

**DIGITAL  
DOCUMENTATION**



Using STUI, take a clear photo of the campaign sticker along with the last 6 digits of the VIN and the date of repair on a piece of paper.

Upload the photo to STUI.



3. Proceed to next section and complete the **Vehicle Emission Recall - Proof of Correction Card** for the states listed.

If **NOT** applicable to your state, the repair process is complete.

## Vehicle Emission Recall – Proof of Correction Card (for Vehicles Registered in Certain States)

**For vehicles registered in California, Colorado, Connecticut, Delaware, Maine, Maryland, Massachusetts, New Jersey, New York, Oregon, Pennsylvania, Rhode Island, Vermont, and Washington:**

### VEHICLE EMISSION RECALL - PROOF OF CORRECTION CARD

A Vehicle Emission Recall - Proof of Correction card must be filled out for all vehicles registered in California, Colorado, Connecticut, Delaware, Maine, Maryland, Massachusetts, New Jersey, New York, Oregon, Pennsylvania, Rhode Island, Vermont, and Washington. Residents of these states, who own an affected vehicle, will be required to possess a Vehicle Emission Recall - Proof of Correction card as evidence of voluntary service campaign completion, when they apply for vehicle registration renewal.

### WHAT TO DO WITH THE CARD:

The Vehicle Emission Recall - Proof of Correction card must be completed by the Dealership's Service Manager using a permanent ink pen. A fine point pen is recommended. When filling in the information, copy the information directly from the vehicle, not from the repair order.

ALL INFORMATION MUST BE PRINTED AND NEAT.

The copy of the card shown below indicates the areas to be filled in. Each area must be filled in.

**The completely filled out Vehicle Emission Recall - Proof of Correction card should be given to the owner of the vehicle upon completion of the Campaign.**

1. Enter Vehicle's License Number
2. Enter "Hyundai"
3. Enter Model Year
4. Enter Model (e.g. Elantra Hybrid)
5. Enter the vehicle's VIN Number
6. Enter Campaign Number 9B4
7. Enter Dealership Name
8. Enter Dealership's Address  
**NOTE:** Enter the physical address, not the mailing address (not a P.O. Box)
9. Enter Date of Repair
10. Service Manager Sign Here

Vehicle Emission Recall – Proof of Correction						
License No.	Make	Model Year	Body Type	Vehicle Identification Number		
1	2	3	4	5		
Manufacturer:			2	Recall Number:		6
The above described vehicle has been repaired, modified and/or equipped with new emission control devices to meet applicable California Emission Control Laws.						
Dealer's Name			Address, City, State and Zip			
7			8			
Date		Dealership's Authorized Signature				
9		x 10				
<b>Return this certificate to DMV only when required – otherwise retain for your records.</b>						
NP050-09006 8/14						