

RAPID UPDATE

FROM: Maserati TSO

TO: Maserati Network



Maserati

PERSONAL SERVICE LAB

MASTERS OF CARE

Rapid Update 766

Grecale Multiple Software Updates

AGSM - BSM - CVPAM - ICS - IPC - RFHM - BCM - ECM - TCM



IMPORTANT NOTICE This bulletin supersedes MAS004466 RU 24-41 released on Nov 19, 2024. It includes updated diagnostic procedures. Please discard all previous versions.

DATE: July 15, 2025

Certain Maserati Grecale ICE and BEV (M182) MY23, MY24, and MY25 listed in MODISCS+ are involved in a Rapid Update to update the software on multiple ECU modules.

Over the past year, we have dedicated significant efforts to enhancing the functionality of our cars, according to reports and suggestions from our customers. We have observed that sometimes, certain important actions are not carried out, despite all campaigns being mandatory. We understand that this modernization effort requires considerable dedication, but it is essential for us to prioritize customer satisfaction. We recognize that amidst daily tasks, it can be challenging to keep track of various circular letters. Therefore, we have consolidated some of them, ensuring that you have all the instructions in a single bulletin.

We remind you that **all** the Rapid Updates must be performed within the first workshop visit (not only this regrouping), regardless of the Mandatory setting set in Modis, as required by Maserati policies.

Also, for vehicles in Stock Dealer / PDI, it is necessary to carry out all action operations before delivery to the end customer, as required by the White Book and explicitly reported in the Pre-delivery checklist.

Please read and review this bulletin first before ordering parts and/or starting the procedure.

Contact your Regional AfterSales Manager (RAM) or the Technical Support Helpdesk if you have any questions.

Thank You for your continued support and cooperation.

Maserati Americas
Aftersales Dept.

OVERVIEW

Use the attached VIN list to determine which ECUs to update for each VIN involved in this action.

| Complete VIN | VIN | Status | Automatic Modis Case | Modules to be Updated | Operation Codes to be Claimed |
|-------------------|--------|--------|----------------------|------------------------|---|
| ZN6AW82B007378268 | 378268 | 85 | SW Upd Case 96 | AGSM-CVPAM-IPC-BCM | 302037A-871227A-850001A-861035C |
| ZN6CW82B007378344 | 378344 | 85 | SW Upd Case 115 | AGSM-BCM | 302037A-861035C |
| ZN6AW82B007392588 | 392588 | 96 | SW Upd Case 24 | CVPAM-ICS-IPC-BCM | 871227A-871240F-850001A-861035C |
| ZN6AW82B007392586 | 392586 | 95 | SW Upd Case 11 | AGSM | 302037A |
| ZN6AW82B007392575 | 392575 | 96 | SW Upd Case 18 | CVPAM | 871227A |
| ZN6AW82B007392621 | 392621 | 98 | SW Upd Case 35 | CVPAM-ICS-BCM | 871227A-871240F-861035C |
| ZN6AW82B007392620 | 392620 | 95 | SW Upd Case 7 | CVPAM-ICS | 871227A-871240F |
| ZN6AW82B007392540 | 392540 | 94 | SW Upd Case 100 | AGSM-CVPAM-ICS-IPC-BCM | 302037A-871227A-871240F-850001A-861035C |
| ZN6AW82B007392624 | 392624 | 95 | SW Upd Case 26 | ICS-IPC-BCM | 871240F-850001A-861035C |
| ZN6AW82B007392593 | 392593 | 96 | SW Upd Case 100 | AGSM-CVPAM-ICS-IPC-BCM | 302037A-871227A-871240F-850001A-861035C |

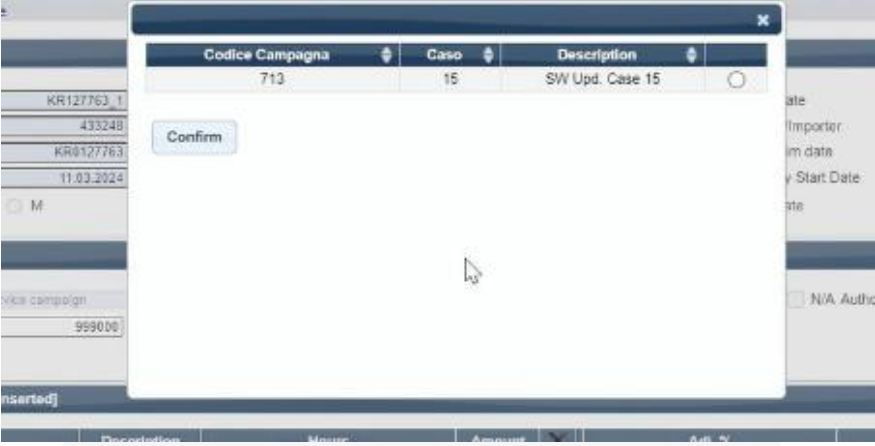
Sw Update Case Label for Automatic claim compiling

List Of Modules to be updated for each single VIN

Operation Code to be reimbursed for each single VIN

VIN List Example

When the SE is open and the campaign claim is created, Modis will automatically recognize which Software case is assigned to the VIN, prompting the correct Case. Only one case is suggested, avoiding any error.



SUGGESTION: We suggest opening the claim in temporary status, just confirming the only option that the system will suggest. In this way, it will be very clear to understand the list of modules to be updated.

| Cost Code | 23 - Service campaign | Campaign # | 766 |
|---|-----------------------|---------------------------|-------------------------------|
| Component | 999000 | M182 MULTIPLESWUPDATE 2.0 | Repair technically authorized |
| Labour Code [0 Element inserted] | | | |
| Code | Description | Hours | |
| 302037A | AGSM SOFTWAREUPDATE | 0,20 | |
| 490002A | BSM SW SOFTWAREUPDATE | 0,20 | |
| | | | |
| | | | |
| | | | |
| | | | |
| | | | |

ATTENTION: Double-check the VIN LIST to avoid any mistake on the Case to be performed. Take into consideration that the VIN list reports the same automatic compiling in Modis.

If the claim is submitted without any modification, it will be automatically assessed and approved.

NOTE: The claim submission is a self-declaration that all the modules listed are updated at the time of the SE closure.

Modules to be updated

ATTENTION: Only the actions marked in the VIN list must be claimed. Please confirm the automatic claiming compiling to avoid any mistakes.

Software versions to be installed (or newer).

| ECU | Previous Campaigns | Market | MY | F188 / F18A Target | Operation Code |
|-------|--------------------|--------|----------|------------------------|----------------|
| AGSM | 743 | ROW | 23-24-25 | 670353212 | 3.02.037.A |
| BSM | 714/733 | ROW | 23-24-25 | 670353223 | 4.90.002.A |
| CVPAM | 661/713 | ROW | 23-24 | 670310114 670311043 | 8.71.227.A |
| ICS | 663/713 | ROW | 23-24 | 673015759 673015761 | 8.71.240.F |
| RFHM | 673/713 | ROW | 23-24 | 670305110 | 8.53.088.B |
| BCM | 674/713 | ROW | 23-24 | 670309694 | 8.61.035.C |
| ECM | 679/713 | NAFTA | 23 | 670308244 670308246 | 1.90.001.A |
| ECM | 680-713 | NAFTA | 24 | 670308824 670308825 | 1.90.001.A |
| TCM | 679-680-713 | NAFTA | 23-24 | 670299988 | 3.10.060.A |
| IPC | 670-713 | ROW | 23 | 670305850 | 8.50.001.A |

ROW = Rest of World (still applies to US and CANADA markets)

SUGGESTION: All ECU updates, except for the IPC, take only a few minutes. However, the IPC update process takes longer to complete. Due to this, we suggest performing the IPC update as the last operation to better manage downtime.

NOTE: Claim submission is a self-declaration that all the modules listed are updated at the time of the SE closure.

Technical Procedure



All images shown in this bulletin are for illustrative purposes only.

- Always check ModisCS+ to see if the vehicle is involved in this action and if it has not been previously performed.
- Before proceeding, please ensure the following preconditions:**
 - Battery voltage > 12,5 V (It is suggested to connect the E-XTEQ MAXIMUS to the 12V Battery to maintain minimum voltage and current draw requirements)**
 - Key ON and Engine OFF**
 - Vehicle Parked and SGW unlocked**
- Using the EVO, perform the software update **only** to the modules indicated by VIN in the attached VIN LIST.

AGSM (Automatic Gearbox Shifter Module)

Main Bug Fixed:

This action is necessary to prevent the Park button from potentially getting "stuck ON" or the inability to shift the gear out of "P." This issue could prevent the vehicle from being moved and may result in DTCs P07BE-00/1E1700 being stored in the AGSM.

Technical Procedure:

- From ECU View, select the **AGSM – ECU programming**.
- After ECU Programming, perform **BCM – Procedures – PROXI Alignment**.
- Clear DTCs.

BSM (Braking System Module)

Main Bug Fixed:

This update is needed to avoid the seldom presence of multiple warning lights on cluster at the first key on. Note that the key-off cycle resets the fault(s).

Technical Procedure:

- From ECU View, select the **BSM – ECU programming**.
- After ECU Programming, perform **BSM – Procedures – Post-flash Operations**.
- After Post-flash Operations, perform **BCM – Procedures – PROXI Alignment**.
- Clear DTCs.

CVPAM (Central Vision Park Assist Module)

Bug Fix:

This update is necessary to improve the power draw of the CVPAM module from the vehicle's 12V battery.

Technical Procedure:

- **Verify that the MD-Evo version is 9.3.0 SPA or later.**
- From ECU View, select the **CVPAM – ECU programming**.
- After ECU programming, perform **BCM – Procedures – PROXI Alignment**.
- Clear DTCs.

ICS (Integrated Center Stack)

Bug Fix:

This update is necessary to enhance the sensitivity of the touch screen.

Technical Procedure:

- From ECU View, select **ICS – ECU programming**.
- After ECU programming, perform **BCM – Procedures – PROXI Alignment**.
- Clear DTCs.

RFHM (Radio Frequency HUB Module)

Bug Fix:

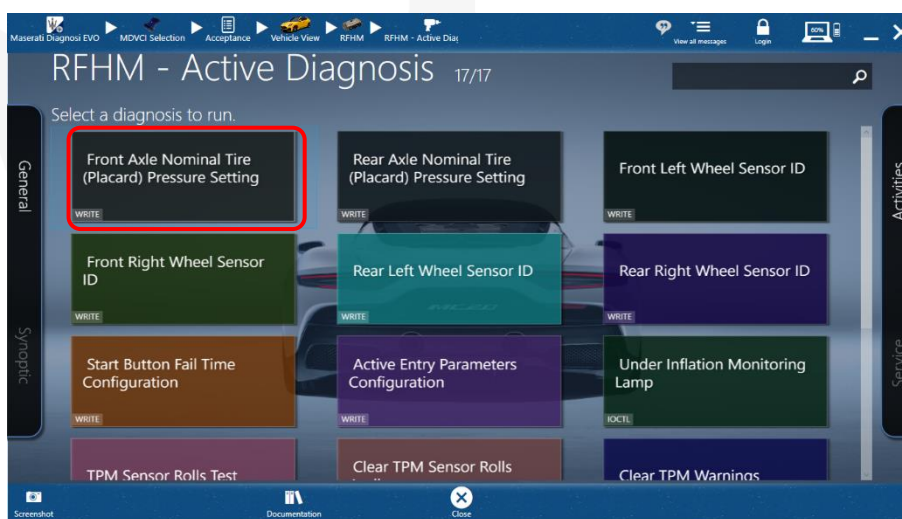
This update is essential to prevent the occurrence of a false TPMS (Tire Pressure Monitoring System) warning indication. In specific situations, the front tire pressures might erroneously appear in yellow on the cluster display, even when the actual tire pressures meet or exceed the specified values. This problem stems from an incorrect internal calculation related to the hexadecimal conversion between psi and bar. It's crucial to note that this update does not alter the tire pressure values as stated in the owner manuals and technical documentation.

Technical Procedure:

- From ECU View, select **RFHM – ECU programming**.
- After ECU programming, perform **BCM – Procedures – PROXI Alignment**.
- Clear DTCs.

IMPORTANT for 19" tires only:

- Select **RFHM – Active diagnosis – Front Axle Nominal Tire (Placard) Pressure Setting:**



- Insert **31** in the text box and click on **Execute** to set the new value.

BCM (Body Control Module)

Bug Fix:

This software update is necessary to correct a potential issue with the wireless charger that can cause interference during the key fob search process. As a result, in very rare instances, the message "Key fob left the vehicle" may appear on the cluster display.

Technical Procedure:

- From ECU View, select the **BCM – ECU programming**.
- Please carefully follow the instructions suggested by the MD-Evo during the update procedure (such as the request for **ignition OFF**).
- After ECU programming, perform **BCM – Procedures – PROXI Alignment**.
- Clear DTCs.

ECM (Engine Control Module)

Bug Fix:

This update is essential to rectify a potential loss of CAN communication between the ECM and other ECUs (AGSM, DTMC, BSM, etc.) when the ECU temperature is high. This new software corrects this behavior avoiding multiple warning lights. No loss of torque or recovery strategy is activated for this concern. The new software also fixes a potential MIL attributed to P-codes P106A and P1066 related to the MultiAir solenoid valve. **This Software update requires the TCM to be updated as well.**

Technical Procedure:

- From ECU View, select the **ECM – ECU programming**.
- Press **“Execute”** starting pre-procedures:



- After ECU programming, perform **BCM – Procedures – PROXI Alignment**.
- Clear DTCs.

TCM (Transmission Control Module)

Although there are no reported issues impacting the TCM, the implementation of new ECM software requires the TCM software to be updated as well for compatibility reasons.

Technical Procedure:

- From ECU View, select the **TCM – ECU programming**.
- After ECU programming, perform **BCM – Procedures – PROXI Alignment**.
- Clear DTCs.

IPC (Instrument Panel Cluster)

Bug Fix:

This update is needed to solve the following potential bugs: park assist warning on the cluster, speed switch from kph to mph by itself, and noise with turn indicators on.

Technical Procedure:

- From ECU View, select the **IPC – ECU programming**.
- After ECU programming, perform **BCM – Procedures – PROXI Alignment**.
- Clear DTCs.

Power Latch (exclusively for BEV vehicles)

After the ECUs updates, exclusively for BEV vehicles, please follow these operations:

- **Perform APM – ACTIVE DIAGNOSIS – Hard Reset (BEV ONLY!)**
- **Close the MDEVO application and disconnect the MDVCI2**
- **Disconnect the 12V Battery Maintainer from the 12V Battery**
- **Perform the Key OFF**
- **Make sure that the bonnet, the trunk, and all the doors are properly closed.**
- **Wait for the power latch (wait until the dashboard clock turns off)**
- **Reconnect the 12V Battery Maintainer to the 12V Battery**
- **Perform the Key ON**
- **Reconnect the MDVCI2, restart the MDEVO application, and clear DTCs from the ECU View.**
- **Perform the Ignition Cycle (Key OFF and Key ON)**
- **Verify that the vehicle goes into ready mode (BEV ONLY!)**

Warranty Claim

Fill in the relative Warranty Claims as follows:

| Description | Code |
|---------------------------------|---------------------|
| Number | 766 |
| Warranty Code | 23 |
| Fault Code | 063 |
| Component Code | 9.99.000 |
| Operation Code | |
| AGSM SW Update | 3.02.037.A (0,20h) |
| BSM SW Update | 4.90.002.A (0,20h) |
| CVPAM SW Update | 8.71.227.A (0,20h) |
| ICS SW Update | 8.71.240.F (0,20 h) |
| IPC SW Update | 8.50.001.A (0,20 h) |
| RFHM Active Diagnosis | 8.53.088.A (0,15 h) |
| RFHM SW Update | 8.53.088.B (0,20 h) |
| RFHM SW Upd. + Active Diagnosis | 8.53.088.C (0,30 h) |
| BCM SW Update | 8.61.035.C (0,20 h) |
| ECM SW Update | 1.90.001.A (0,20 h) |
| TCM SW Update | 3.10.060.A (0,20 h) |