



INSTRUCTION TO SERVICE

ITS61379		June 27, 2025
SECTION:	290 – ELECTIRCAL SCHEMATICS	
SUBJECT:	Shifter logic causing unintended neutral shift	
ISSUE:	With ELFA3, bus will shift to neutral when ramp stowed status is lost.	
SUMMARY:	PLC Update to prevent shifting to neutral when losing ramp stowed status.	

ITS61379

Ref. NHTSA Recall No.	Ref. Transport Canada Recall No.
Not Applicable	Not Applicable

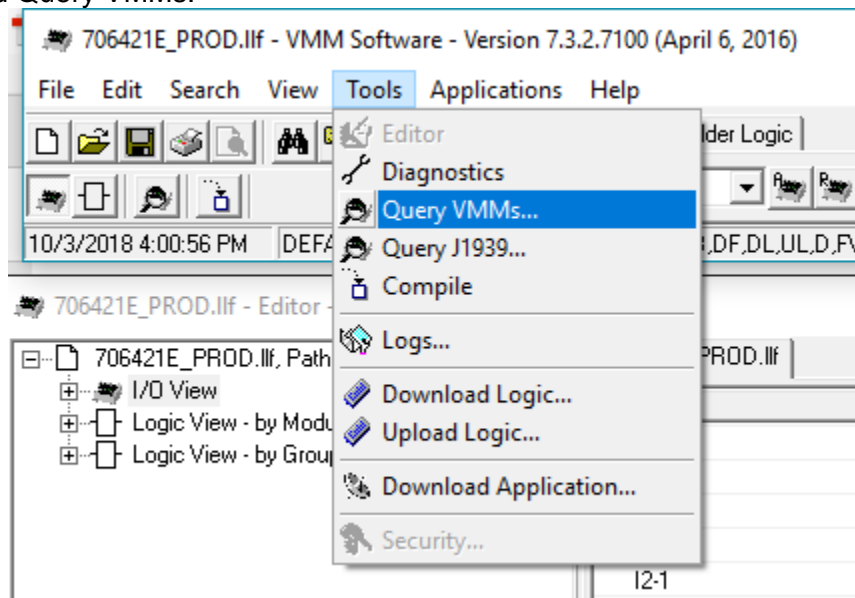
THIS ITS DOCUMENT SHOULD BE RETAINED AND REFERRED TO FOR FUTURE MAINTENANCE UNTIL THE NEW FLYER PARTS AND/OR SERVICE MANUAL IS UPDATED TO REFLECT WORK DONE AS A RESULT OF THIS DOCUMENT. ENSURE THAT THIS DOCUMENT IS AVAILABLE FOR PARTS AND MAINTENANCE STAFF GOING FORWARD.

PROCEDURE:

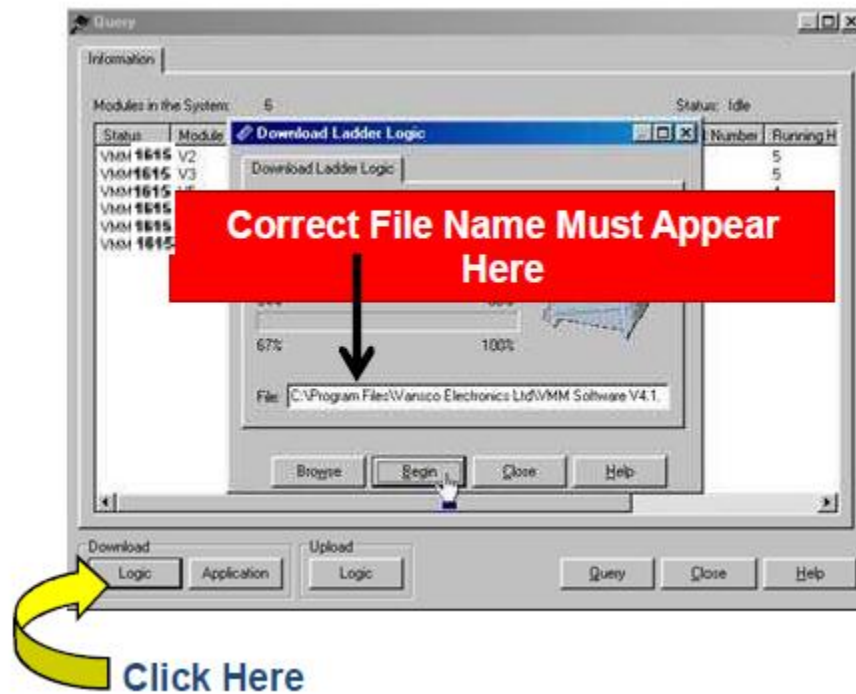
1. Ensure the Master Run Switch is in Day/Run position and hazard must be on.



2. Ensure laptop battery is fully charged or plugged into a power source.
3. Connect a laptop with VMM Software to the under-dash USB A connector located below the right side of the dash, above the pedals.
4. Open the PLC program in the VMM software.
5. Select Tools and Query VMMs.



6. Ensure you are communicating with all the nodes in the query screen prior to downloading.
7. Select download logic.
8. Ensure the correct file name and revision appear in the file window.



9. The software will verify the correct number of VMMs are found. Do not download program if all VMMs are not located. If the correct number of VMMs were found, select Yes.



LABOUR ESTIMATE				
	Operation	Number of Technician(s)	Hours	Labor Time T X HR
1	Update the Vansco Software	1	0.5	0.5