



# Service Bulletin

Bulletin No.: 25-NA-085

Date: May, 2025

## TECHNICAL

**Subject: Radio Software Update W36E-179.1.2-M174-SQBR6-151.2**

Brand:	Model:	Model Year:		VIN:		Engine:	Transmission:
		from	to	from	to		
Cadillac	Escalade	2025	2025	—	—	All	All
	Escalade ESV						
	Escalade IQ						
	OPTIQ						
Chevrolet	Colorado	2025	2025	—	—	All	All
	Equinox						
	Suburban						
	Tahoe						
GMC	Canyon	2025	2025	—	—	All	All
	Terrain						
	Yukon						
	Yukon XL						

<b>Involved Region or Country</b>	North America, Argentina, Brazil, Bolivia, Chile, Colombia, Peru, Middle East, Israel, Palestine, South. Korea
<b>Additional Options (RPOs):</b>	INFOTAINMENT - VIRTUAL COCKPIT SYS - HIGH (RPO IVE)
<b>Condition</b>	<p>Some customers may comment on software related issues. Continuous improvement software updates are being released with improvements made in several areas. Below are a list of concerns that a customer may comment on but are not limited to:</p> <ul style="list-style-type: none"> <li>• <b>Phone Projection:</b> Black screen, crashes, disconnections, audio problems.</li> <li>• <b>Audio:</b> Lost media audio, crackling sounds, volume issues.</li> <li>• <b>Bluetooth:</b> Issues with deleting or disconnecting devices.</li> <li>• <b>Camera:</b> Performance issues.</li> <li>• <b>Cluster:</b> Dimming.</li> <li>• <b>Connectivity:</b> General inoperability.</li> <li>• <b>Radio Display:</b> Black screens, theme mismatches, slow boot times.</li> <li>• <b>HVAC:</b> Visibility and fan speed issues.</li> </ul>

<b>Cause</b>	The cause of the condition may be software anomalies.
<b>Correction</b>	<p>A new radio software update, version is W36E-179.1.2-M174-SQBR6-151.2, was released to service for vehicles equipped with Infotainment system RPO IVE. In addition to providing robustness and stability improvements, this update will also include refinements from previous software version releases.</p> <p>Dealers are to update the radio and confirm the radio software update corrects the customer's concern. If the software update does not correct the customer's concern, please refer to SI diagnostics.</p> <p><b>Caution:</b> To avoid potential programming errors, ensure both programming events (Programming and USB File Transfer) are performed.</p> <p>For MY25 OPTIQ and Escalade IQ <b>only</b>, please refer to 24-NA-143 for programming instructions.</p>

## Service Procedure

**Important:** Service agents must comply with all International, Federal, State, Provincial, and/or Local laws applicable to the activities it performs under this bulletin, including but not limited to handling, deploying, preparing, classifying, packaging, marking, labeling, and shipping dangerous goods. In the event of a conflict between the procedures set forth in this bulletin and the laws that apply to your dealership, you must follow those applicable laws.

**Important:** This technical service bulletin (TSB) can only be completed by certified repair facilities who have met all specific training, tool, and equipment requirements pertaining to the vehicle Brand and Model serviced. Repairs must be performed by a technician who has successfully completed the required training.

**Caution:** Before downloading the update files, be sure the computer is connected to the internet through a network cable (hardwired). DO NOT DOWNLOAD or install the files wirelessly. If there is an interruption during programming, programming failure or control module damage may occur.

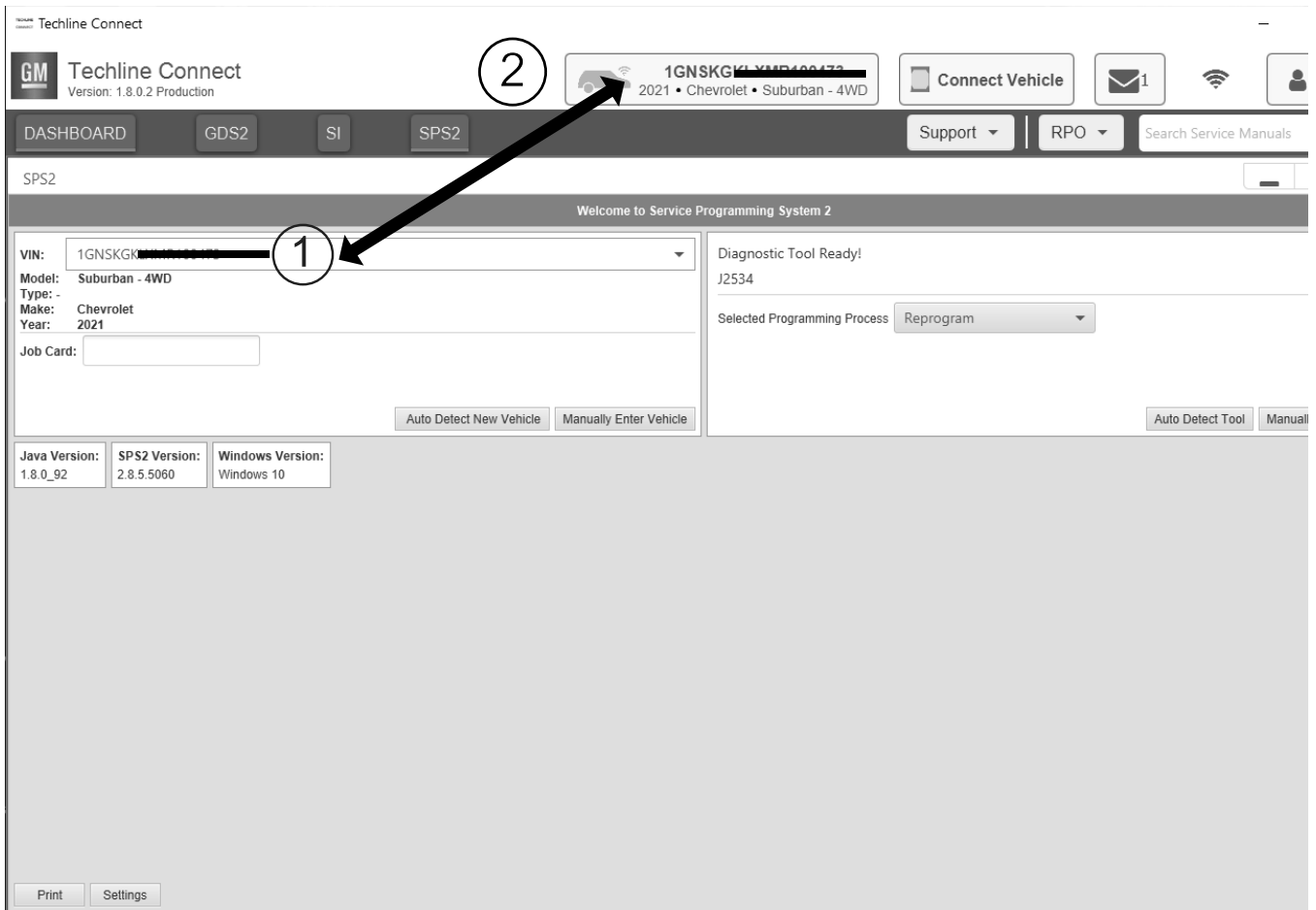
- Ensure the programming tool is equipped with the latest software and is securely connected to the data link connector. If there is an interruption during programming, programming failure or control module damage may occur.
- Stable battery voltage is critical during programming. Any fluctuation, spiking, over voltage or loss of voltage will interrupt programming. Install a GM Authorized Programming Support Tool to maintain system voltage. Refer to [www.gmdesolutions.com](http://www.gmdesolutions.com) for further information. If not available, connect a fully charged 12V jumper or booster pack disconnected from the AC voltage supply. DO NOT connect a battery charger.
- Follow the on-screen prompts regarding ignition power mode but ensure that anything that drains excessive power (exterior lights, HVAC blower motor, etc.) is off.
- Please verify that the radio time and date are set correctly before inserting USB drive into vehicle for programming; **otherwise, an error will result.**
- Clear DTCs after programming is complete. Clearing powertrain DTCs will set the Inspection/Maintenance (I/M) system status indicators to NO.

**Important:** The service technician always needs to verify that the VIN displayed in the TLC left side drop down menu and the top center window match the VIN plate of the vehicle to be programmed prior to using Service Programming System 2 (SPS2) for programming or reprogramming a module.

- For the TLC application, service technicians need to always ensure that the power mode (ignition) is "ON" before reading the VIN from the vehicle's VIN master module and that they do not select a VIN that is already in the TLC application memory from a previous vehicle.
- If the VIN that shows up in the TLC top center window after correctly reading the VIN from the vehicle does not match the VIN plate of the vehicle, manually type in the VIN characters from the vehicle VIN plate into the TLC top center window and use these for programming or reprogramming the subject module with the correct vehicle VIN and software and/or calibrations.
- The Engine Control Module (ECM) is the master module (for VIP vehicles) that TLC reads to determine the VIN of the vehicle. If the VIN read from the vehicle by TLC does not match the VIN plate of the vehicle, the ECM also needs to be reprogrammed with the correct VIN, software and calibrations that match the vehicle's VIN plate.

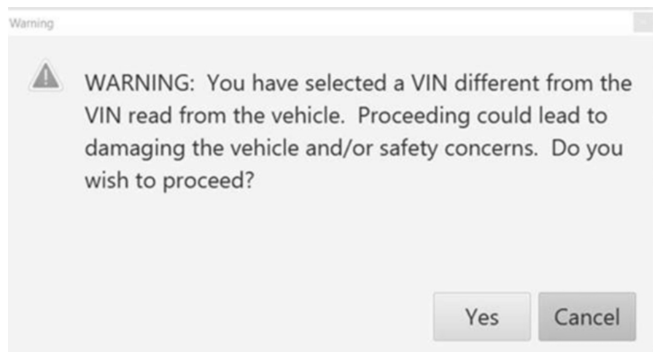
- The Body Control Module (BCM) is the master module (for GEM vehicles) that TLC reads to determine the VIN of the vehicle. If the VIN read from the vehicle by TLC does not match the VIN plate of the vehicle, the BCM also needs to be reprogrammed with the correct VIN, software and calibrations that match the vehicle's VIN plate.

**Caution:** Be sure the VIN selected in the drop-down menu (1) is the same as the vehicle connected (2) before beginning programming.



5743643

**Important:** If the vehicle VIN DOES NOT match, the message below will be shown.



5877000

The screenshot shows the Techline Connect software interface. At the top, there is a navigation bar with 'DASHBOARD', 'GDS2', 'SI', and 'SPS2' buttons. A search bar for 'Search Service Manuals' is also present. The main area is titled 'SPS2' and contains a 'Programming' table. A modal dialog box is overlaid on the table, displaying a warning message: 'M4521: You are attempting to reprogram with the same calibration. Select OK to continue, Cancel to Stop!'. The table has columns for 'Controller', 'ID', 'Current #', and 'Description'. The 'Description' column contains several entries that are partially obscured by redaction bars.

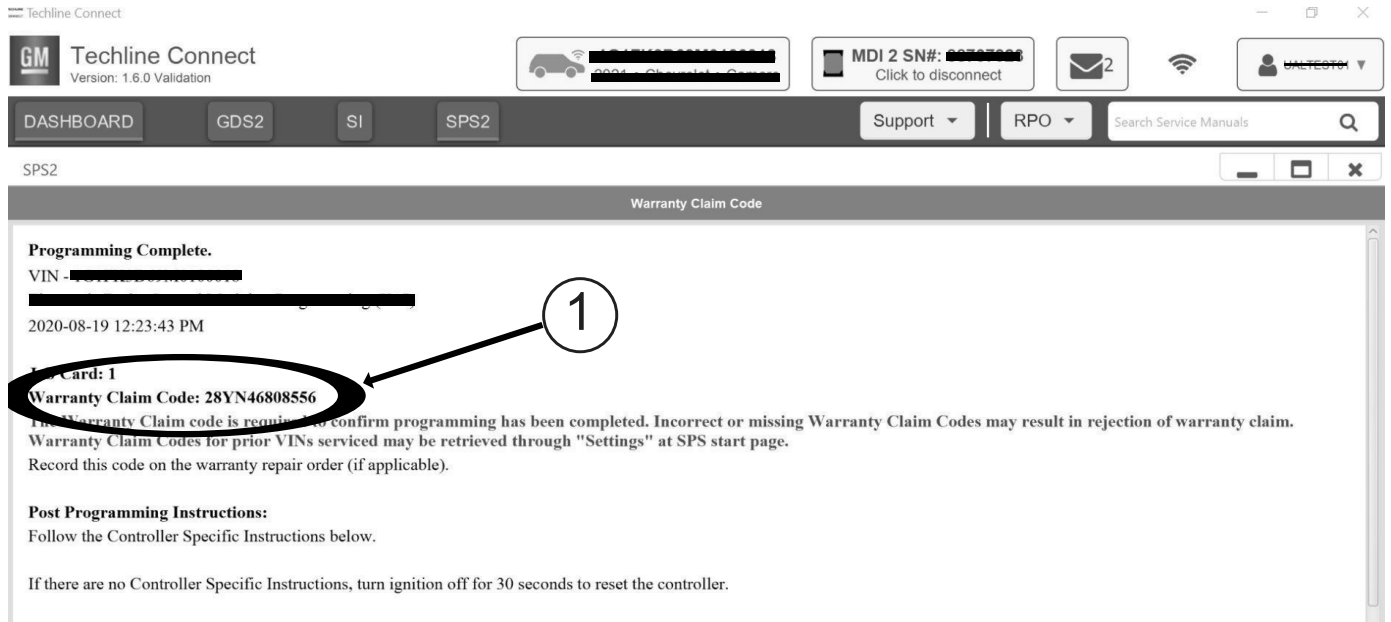
Controller	ID	Current #	Description
K17	1	84820771	
K17	2	84820790	
K17	3	84820797	84820797 <del>Electronic Brake Diagnostic Calibration</del>
K17	4	84820801	84820801 <del>Function Enable Calibration</del>
K17	5	84820808	84820808 <del>Driver mode brake calibration</del>
K17	6	84820819	84820819 <del>Pre-Pressure Calibration</del>
K17	7	84820825	84820825 <del></del>

5644477

**Important:** Techline Connect screen shown above.

**Important:** If the same calibration/software warning is noted on the TLC Summary screen, select OK and follow screen instructions. After a successful programming event, the WCC is located in the Service Programming System dialogue box of the SPS Summary screen. Record the WCC on the job card. No further action is required. Refer to the Warranty Information section of this bulletin.

1. Refer to *A11 Radio: Programming and Setup* in SI.



5644478

**Note:** The screenshot above is an example of module programming and may not be indicative of the specific module that is being programmed. Module selection and VIN information have been blacked out.

**Important:** To avoid warranty transaction rejections, you MUST record the warranty claim code provided on the Warranty Claim Code (WCC) screen shown above on the job card. Refer to callout 1 above for the location of the WCC on the screen.

- Record the SPS Warranty Claim Code on the job card for warranty transaction submission.

### Warranty Information

For information on the Warranty Claim Code, refer to **24-NA-132: Warranty Administration - Claim Submission**.

For information on the Warranty Claim Submission, refer to **24-NA-132: Warranty Administration - Claim Submission**.

Labor Operation	Description	Labor Time
2810335	Radio Reprogramming with SPS	Use Published Labor Operation Time

**Important:** \*To avoid warranty transaction rejections, carefully read and follow the instructions below:

Labour Time [Top]

Labour Operation Code:

Additional labour op code information:

6125814

- The Warranty Claim Code must be accurately entered in the “Warranty Claim Code” field of the transaction.
- When more than one Warranty Claim Code is generated for a programming event, it is required to document all Warranty Claim Codes in the “Correction” field on the job card. Dealers must also enter one of the codes in the “Warranty Claim Code” field of the transaction, otherwise the transaction will reject. It is best practice to enter the FINAL code provided by SPS2.

### Warranty Claim Code Information Retrieval

Job Card:

Java Ver 1.8.0\_92

VIN	Module	Function	Warranty Claim Code	Job Card
[REDACTED]	K73 - Telematics Communication Interface Control Module	Programming & Service Activation	[REDACTED]	test
[REDACTED]	K9 - Body Control Module	Programming	[REDACTED]	test
[REDACTED]	K5 - Automatic Level Control Module Ignition	Off	[REDACTED]	test driver
[REDACTED]	K56 - Serial Data Gateway Module	Programming	[REDACTED]	test driver

Print Settings

Ok Cancel

If the Warranty Claim Code was not recorded on the Job Card, the code can be retrieved in the SPS2 system as follows:

1. Open TLC on the computer used to program the vehicle.
2. Select and start SPS2.
3. Select Settings (1).
4. Select the Warranty Claim Code tab (2).

The VIN, Warranty Claim Code and Date/Time will be listed on a roster of recent programming events. If the code is retrievable, dealers should resubmit the transaction making sure to include the code in the SPS Warranty Claim Code field.

<b>Version</b>	2
<b>Modified</b>	Released April 02, 2025 Revised May 09, 2025 – Updated the Models section and content throughout the bulletin.

Additional SI Keywords: Blank, Apple, Carplay, Android, auto, lagging, lag, glitching, slow, music, HUD, software

