

## Field campaign

<b>Topic</b>	W12 Software Update Package (NAR Only)   Continental GT/GTC/Flying Spur   24MY (SC25/12)
<b>Market area</b>	United States E05 Bentley USA and rest America (6E05)
<b>Brand</b>	Bentley
<b>Transaction No.</b>	2077712/3
<b>Campaign number</b>	ED43
<b>Note</b>	
<b>Type</b>	
<b>US code</b>	

## Vehicle data

### 24MY W12 Continental GT/GTC/Flying Spur

#### Sales types

Type	MY	Brand	Designation	Engine code	Gearbox code	Final drive code
3S4*	2024	E		*	*	*
3S3*	2024	E		*	*	*
ZG2*	2024	E		*	*	*

## Documents

Document name
master.xml
ed43vinlist.pdf

---

## Notes



### Technical background

Software updates must be applied to the vehicle. The updates are for the following:

#### 1. Improved Engine Fan control function.

- Prevents a potential overheating message "Coolant temperature is too high. Let the engine cool down by running it at idling speed for a few moments". When the fan does not function as intended to maintain optimum engine temperature.

#### 2. Brake Light Plausibility Timer adjustment. Corrects the potential triggering of Diagnostic Trouble Codes (DTC):

The update can resolve the potential triggering of the following Diagnostic Trouble Codes (DTC):

- P0573 – Brake Switch "A" Circuit High

#### 3. Improved Engine Fan control robustness under idle conditions.

The update can resolve the potential triggering of the following Diagnostic Trouble Codes (DTC):

- P0087 – Fuel Rail/System Pressure – Too Low Bank 1
- P0088 – Fuel Rail/System Pressure – Too high Bank 1
- P01C8 – Fuel Rail/System Pressure – Too Low Bank 2
- P01C9 – Fuel Rail/System Pressure – Too High Bank 2

### Remedy

The instructions within the 'Work' section **must** be conducted to completion.

### Customer notification

Please ensure all applicable instructions are conducted at the nearest opportunity.

### Warranty

#### SVM Update Time

Claim type: 790 or 710

Service number: ED43

Damage code: 00 66

Criteria:01

Labour Operation Code: 01 51 00 00

Time: As per ODIS log (Must not exceed 90TU)

### Parts

Not Applicable

### Parts supply

Not Applicable

### Parts despatch control

Not Applicable

---

## Repair instructions



### Technical background

Software updates must be applied to the vehicle. The updates are for the following:

1. Improved Engine Fan control function.

- Prevents a potential overheating message “Coolant temperature is too high. Let the engine cool down by running it at idling speed for a few moments”. When the fan does not function as intended to maintain optimum engine temperature.

2. Brake Light Plausibility Timer adjustment. Corrects the potential triggering of Diagnostic Trouble Codes (DTC):

The update can resolve the potential triggering of the following Diagnostic Trouble Codes (DTC):

- P0573 – Brake Switch “A” Circuit High

3. Improved Engine Fan control robustness under idle conditions.

The update can resolve the potential triggering of the following Diagnostic Trouble Codes (DTC):

- P0087 – Fuel Rail/System Pressure – Too Low Bank 1
- P0088 – Fuel Rail/System Pressure – Too high Bank 1
- P01C8 – Fuel Rail/System Pressure – Too Low Bank 2
- P01C9 – Fuel Rail/System Pressure – Too High Bank 2

## Check

Check if the vehicle is already listed as repaired in “Repair history” (in ElsaPro).

Please also refer to the “Identification” section and check if a paint identification mark is evident in the vehicle.

If the vehicle is not shown in ElsaPro as repaired, and the identification mark is not present, please conduct the instructions within the ‘Work’ section to completion

## Parts

Not Applicable

## Work

### CAUTION

The Bentley ODIS-S Brand Version **MUST** be at least 2.35.2 (or higher).

### CAUTION

Before conducting the onward instructions, the operative **MUST** recheck the communication method in ODIS and ensure that DoIP is selected before proceeding. Within ODIS-S, perform the following:

- On the right hand side, select the “Admin” tile (Within ‘Operating modes’)
- Select “GFF sequence” (Within ‘General information’ section)
- Under the “Selection of Communication path” drop-down menu, select “Only permit DoIP communication”.

### CAUTION

**DO NOT, UNDER ANY CIRCUMSTANCES, ATTEMPT TO CONDUCT THE SOFTWARE UPDATE VIA THE CAN NETWORK. ONLY DoIP SHOULD BE USED WHEN PERFORMING THE SVM UPDATE.**

### CAUTION

You **MUST ONLY** use the Diagnosis Interface VAS 6154 (WiFi Diagnostic Tool) in USB OPERATION or the CABLE-CONNECTED VAS 5055 for the reprogramming (updating) of the control units.

- If neither of these units are available, the VAS 5054 (A) may be used in USB MODE.
- **DO NOT** under any circumstances use a Bluetooth connection to conduct the reprogramming (updating) of any control units.

## Battery Charger

### CAUTION

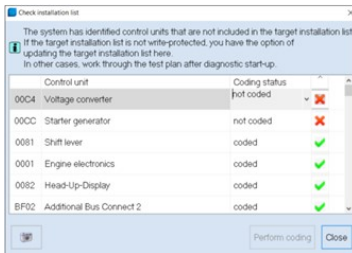
**ONLY** Chargers that meet the approved specification on the Mandatory Equipment List (available on the Bentley Hub) **MUST** be used.

- The charger must be set to a mode where a **MINIMUM** of 90a is supplied to the battery during the process. Typically, this is known as 'Power Supply Mode' or 'DIAG+ Mode'.
- A voltage of **exactly 14.8v** must be set and maintained throughout the process.
- Please refer to the manual to ensure that these requirements are met before beginning any SVM update

## Preparation Before Update

Conduct a full guided fault find of the vehicle.

If a 'Check Installation List' pop-up appears, select 'close' (see below image)



Referring to TPI 2075920, address any unknown faults **BEFORE** conducting any of the below updates.

## SVM Update

### CAUTION

**During the update, switch off all unnecessary consumers. For example, ventilation, seat heaters, interior illumination, exterior lights etc.**

1. Ensure that the correct battery charger is connected to the vehicle. – Refer to the "Battery Charger" section above.
2. Select the Special Functions tab
  - a. Select 'SVM – Code Input'
  - b. Select 'Perform Test'
  - c. Enter the applicable SVM code (as per the "Obtaining Correct SVM Code" section)
3. Enter the applicable SVM code:
  - a. If the vehicle is any variant of a Continental GT or GTC, enter the SVM Code: "370ECMBLF01".
  - b. If the vehicle is any variant of a Flying Spur, enter the SVM Code: "371ECMBLF01".
4. Allow the test to run until completion.
5. If you encounter any errors during the update, please raise a FULL DISS query stating the error encountered whilst also ensuring that the latest GFF log is uploaded online.
6. Re-run guided fault finding and clear DTCs. If any faults are present, refer to TPI 2072055. If any of the faults present are non-sporadic, please raise a full DISS query with a full GFF log uploaded online stating the error encountered.
7. After successful completion of the update, perform the following.
  - a. Turn off the ignition.
  - b. Remove all equipment from the car (Diagnostic tester/dongle, battery charger, keys).
  - c. Close all doors, windows, bonnet and boot lid.
  - d. Lock the vehicle to perform a CAN-BUS sleep (wait 15 minutes).
8. Run the engine at idle for 15 minutes – Periodically check to ensure engine coolant fan is operating.
9. Conduct the readiness code procedure.
  - a. ENSURE NEUTRAL IS SELECTED DURING THE TEST WHEN INSTRUCTED AS DIRECTED BY ODIS.

- b. Carry out the readiness code test until complete.
- c. Should the readiness code bytes be 00000000 NO FURTHER ACTION IS REQUIRED.
- d. Should ANY of the bytes be 1, YOU MUST repeat the readiness code test again. Once complete you must then recheck and confirm the readiness code is 00000000.

### Identification

Once the applicable action has been conducted, the operative must submit a warranty claim as this will show the service campaign action as complete within Elsa Pro "Repair history".

You must also add a yellow paint mark as per the picture below.



America	Mulliner
SCBBB6ZG0RC017031	SCBNV8SV2NC001268
SCBBB6ZG1RC015630	SCBCV13S0PC005065
SCBBB6ZG7RC016040	SCBCV13S2PC005116
SCBBB6ZG8RC015141	SCBCV13S5PC005370
SCBBB6ZG8RC016211	SCBCV13S9PC005775
SCBBB6ZG9RC013883	SCBCV13S0PC006071
SCBCT2ZG0RC016214	SCBNV8SV9PC007085
SCBCT2ZG1RC016416	SCBNV8SV1PC007128
SCBCT2ZG2RC013685	SCBNV8SVXPC007175
SCBCT2ZG5RC012496	SCBNV8SV0PC007220
SCBCT2ZG6RC012572	SCBNV8SV3PC008264
SCBCT2ZG8RC015599	SCBNV8SV3PC009270
SCBCT2ZG9RC015160	SCBNV8SV8PC009426
SCBCT2ZG9RC016275	SCBNV8SV2PC009390
SCBCT2ZG9RC016325	SCBNV8SV2PC011060
SCBCT2ZGXRC012350	SCBNV8SV2PC010958
SCBCT2ZGXRC012879	SCBNV8SV0PC011283
SCBCT2ZGXRC014129	SCBCV13S9PC005324
SCBDT4ZG0RC013250	SCBNV8SV1PC009364
SCBDT4ZG0RC015807	SCBNV8SV8NC001243
SCBDT4ZG1RC013337	SCBNV8SV1PC008294
SCBDT4ZG1RC015184	SCBMZ9SV1RC013567
SCBDT4ZG3RC013906	SCBMZ9SV0RC013608
SCBDT4ZG4RC016264	SCBMZ9SV5RC015001
SCBDT4ZG5RC013731	SCBMZ9SV8RC015087
SCBDT4ZG5RC013874	SCBMZ9SV4RC015197
SCBBB63S5RC016289	SCBMZ9SV7RC015288
SCBBB63S6RC016351	SCBMZ9SV6RC015329
SCBCT23S0RC016467	SCBMZ9SV4RC015345
SCBCT23S6RC015372	SCBMZ9SV0RC015374
SCBCT23SXRC016010	SCBMZ9SV2RC015506
SCBBB6ZG0RC012508	SCBMZ9SV1RC015576
SCBBB6ZG0RC012539	SCBMZ9SV3RC015711
SCBBB6ZG0RC013013	SCBMZ9SV2RC015716
SCBBB6ZG0RC013030	SCBMZ9SV9RC015762
SCBBB6ZG0RC013318	SCBMZ9SV6RC015914
SCBBB6ZG0RC013352	SCBMZ9SV5RC015936
SCBBB6ZG0RC013464	
SCBBB6ZG0RC013528	
SCBBB6ZG0RC014209	
SCBBB6ZG0RC014503	
SCBBB6ZG0RC014579	
SCBBB6ZG0RC014744	

SCBBB6ZG0RC014775	
SCBBB6ZG0RC015067	
SCBBB6ZG0RC015182	
SCBBB6ZG0RC015277	
SCBBB6ZG0RC015652	
SCBBB6ZG0RC016400	
SCBBB6ZG0RC016462	
SCBBB6ZG0RC016610	
SCBBB6ZG0RC016753	
SCBBB6ZG0RC016770	
SCBBB6ZG0RC016784	
SCBBB6ZG0RC016834	
SCBBB6ZG0RC016879	
SCBBB6ZG0RC017126	
SCBBB6ZG0RC017207	
SCBBB6ZG0RC017353	
SCBBB6ZG1RC012274	
SCBBB6ZG1RC012534	
SCBBB6ZG1RC012680	
SCBBB6ZG1RC012713	
SCBBB6ZG1RC013103	
SCBBB6ZG1RC013456	
SCBBB6ZG1RC014512	
SCBBB6ZG1RC014882	
SCBBB6ZG1RC015319	
SCBBB6ZG1RC015465	
SCBBB6ZG1RC015627	
SCBBB6ZG1RC015918	
SCBBB6ZG1RC016230	
SCBBB6ZG1RC016387	
SCBBB6ZG1RC016762	
SCBBB6ZG1RC016955	
SCBBB6ZG1RC017023	
SCBBB6ZG1RC017104	
SCBBB6ZG1RC017121	
SCBBB6ZG1RC017135	
SCBBB6ZG1RC017166	
SCBBB6ZG1RC017183	
SCBBB6ZG2RC012400	
SCBBB6ZG2RC012638	
SCBBB6ZG2RC012686	
SCBBB6ZG2RC013305	
SCBBB6ZG2RC013384	
SCBBB6ZG2RC013773	

SCBBB6ZG2RC014695	
SCBBB6ZG2RC014731	
SCBBB6ZG2RC015135	
SCBBB6ZG2RC015264	
SCBBB6ZG2RC015457	
SCBBB6ZG2RC015815	
SCBBB6ZG2RC015927	
SCBBB6ZG2RC016219	
SCBBB6ZG2RC016561	
SCBBB6ZG2RC016608	
SCBBB6ZG2RC016706	
SCBBB6ZG2RC016981	
SCBBB6ZG2RC017029	
SCBBB6ZG2RC017189	
SCBBB6ZG3RC012454	
SCBBB6ZG3RC013149	
SCBBB6ZG3RC013376	
SCBBB6ZG3RC013703	
SCBBB6ZG3RC014494	
SCBBB6ZG3RC014866	
SCBBB6ZG3RC015032	
SCBBB6ZG3RC015225	
SCBBB6ZG3RC015581	
SCBBB6ZG3RC015855	
SCBBB6ZG3RC015953	
SCBBB6ZG3RC015967	
SCBBB6ZG3RC016097	
SCBBB6ZG3RC016343	
SCBBB6ZG3RC016519	
SCBBB6ZG3RC016598	
SCBBB6ZG3RC016620	
SCBBB6ZG3RC016729	
SCBBB6ZG3RC016794	
SCBBB6ZG3RC017007	
SCBBB6ZG3RC017198	
SCBBB6ZG3RC017203	
SCBBB6ZG3RC017217	
SCBBB6ZG3RC017220	
SCBBB6ZG4RC012222	
SCBBB6ZG4RC012804	
SCBBB6ZG4RC013550	
SCBBB6ZG4RC013659	
SCBBB6ZG4RC013709	
SCBBB6ZG4RC014505	

SCBBB6ZG4RC014861	
SCBBB6ZG4RC015248	
SCBBB6ZG4RC015489	
SCBBB6ZG4RC015508	
SCBBB6ZG4RC015573	
SCBBB6ZG4RC015668	
SCBBB6ZG4RC016058	
SCBBB6ZG4RC016481	
SCBBB6ZG4RC016576	
SCBBB6ZG4RC016612	
SCBBB6ZG4RC016951	
SCBBB6ZG4RC016982	
SCBBB6ZG4RC017145	
SCBBB6ZG5RC012682	
SCBBB6ZG5RC012729	
SCBBB6ZG5RC012973	
SCBBB6ZG5RC013041	
SCBBB6ZG5RC013735	
SCBBB6ZG5RC014495	
SCBBB6ZG5RC014500	
SCBBB6ZG5RC014772	
SCBBB6ZG5RC015002	
SCBBB6ZG5RC015016	
SCBBB6ZG5RC015131	
SCBBB6ZG5RC015484	
SCBBB6ZG5RC015548	
SCBBB6ZG5RC015758	
SCBBB6ZG5RC016084	
SCBBB6ZG5RC016389	
SCBBB6ZG5RC016733	
SCBBB6ZG5RC016800	
SCBBB6ZG5RC017056	
SCBBB6ZG5RC017137	
SCBBB6ZG5RC017249	
SCBBB6ZG6RC013078	
SCBBB6ZG6RC013176	
SCBBB6ZG6RC013405	
SCBBB6ZG6RC013677	
SCBBB6ZG6RC014652	
SCBBB6ZG6RC014716	
SCBBB6ZG6RC014912	
SCBBB6ZG6RC015347	
SCBBB6ZG6RC015459	
SCBBB6ZG6RC015476	

SCBBB6ZG6RC015641	
SCBBB6ZG6RC015896	
SCBBB6ZG6RC016093	
SCBBB6ZG6RC016224	
SCBBB6ZG6RC016269	
SCBBB6ZG6RC016434	
SCBBB6ZG6RC016479	
SCBBB6ZG6RC016708	
SCBBB6ZG6RC017003	
SCBBB6ZG6RC017034	
SCBBB6ZG6RC017065	
SCBBB6ZG6RC017292	
SCBBB6ZG7RC012411	
SCBBB6ZG7RC012487	
SCBBB6ZG7RC012604	
SCBBB6ZG7RC013025	
SCBBB6ZG7RC013462	
SCBBB6ZG7RC014532	
SCBBB6ZG7RC014577	
SCBBB6ZG7RC014644	
SCBBB6ZG7RC014725	
SCBBB6ZG7RC015034	
SCBBB6ZG7RC015082	
SCBBB6ZG7RC015194	
SCBBB6ZG7RC015406	
SCBBB6ZG7RC015468	
SCBBB6ZG7RC015633	
SCBBB6ZG7RC016250	
SCBBB6ZG7RC016491	
SCBBB6ZG7RC016586	
SCBBB6ZG7RC016622	
SCBBB6ZG7RC016670	
SCBBB6ZG7RC016815	
SCBBB6ZG7RC016944	
SCBBB6ZG7RC016992	
SCBBB6ZG7RC017088	
SCBBB6ZG7RC017222	
SCBBB6ZG7RC017334	
SCBBB6ZG8RC012370	
SCBBB6ZG8RC012479	
SCBBB6ZG8RC012921	
SCBBB6ZG8RC014507	
SCBBB6ZG8RC014510	
SCBBB6ZG8RC014829	

SCBBB6ZG8RC014927	
SCBBB6ZG8RC014958	
SCBBB6ZG8RC015009	
SCBBB6ZG8RC015303	
SCBBB6ZG8RC015348	
SCBBB6ZG8RC015401	
SCBBB6ZG8RC015415	
SCBBB6ZG8RC015933	
SCBBB6ZG8RC016032	
SCBBB6ZG8RC016208	
SCBBB6ZG8RC016578	
SCBBB6ZG8RC016676	
SCBBB6ZG8RC016693	
SCBBB6ZG8RC016872	
SCBBB6ZG8RC017102	
SCBBB6ZG8RC017116	
SCBBB6ZG8RC017147	
SCBBB6ZG8RC017181	
SCBBB6ZG8RC017200	
SCBBB6ZG8RC017228	
SCBBB6ZG8RC017259	
SCBBB6ZG8RC017293	
SCBBB6ZG9RC012345	
SCBBB6ZG9RC012474	
SCBBB6ZG9RC012734	
SCBBB6ZG9RC013348	
SCBBB6ZG9RC013401	
SCBBB6ZG9RC013592	
SCBBB6ZG9RC013656	
SCBBB6ZG9RC014497	
SCBBB6ZG9RC014502	
SCBBB6ZG9RC014547	
SCBBB6ZG9RC014967	
SCBBB6ZG9RC015231	
SCBBB6ZG9RC015455	
SCBBB6ZG9RC015648	
SCBBB6ZG9RC015911	
SCBBB6ZG9RC016024	
SCBBB6ZG9RC016265	
SCBBB6ZG9RC016590	
SCBBB6ZG9RC016895	
SCBBB6ZG9RC017013	
SCBBB6ZG9RC017190	
SCBBB6ZG9RC017271	

SCBBB6ZGXRC012872	
SCBBB6ZGXRC012998	
SCBBB6ZGXRC014685	
SCBBB6ZGXRC014864	
SCBBB6ZGXRC015268	
SCBBB6ZGXRC015898	
SCBBB6ZGXRC015948	
SCBBB6ZGXRC015996	
SCBBB6ZGXRC016131	
SCBBB6ZGXRC016341	
SCBBB6ZGXRC016596	
SCBBB6ZGXRC016789	
SCBBB6ZGXRC016792	
SCBBB6ZGXRC017005	
SCBBB6ZGXRC017389	
SCBCT2ZG0RC012552	
SCBCT2ZG0RC012910	
SCBCT2ZG0RC013197	
SCBCT2ZG0RC013569	
SCBCT2ZG0RC013927	
SCBCT2ZG0RC014009	
SCBCT2ZG0RC014396	
SCBCT2ZG0RC014477	
SCBCT2ZG0RC014544	
SCBCT2ZG0RC015063	
SCBCT2ZG0RC015418	
SCBCT2ZG0RC015452	
SCBCT2ZG0RC015578	
SCBCT2ZG0RC015774	
SCBCT2ZG0RC016049	
SCBCT2ZG0RC016116	
SCBCT2ZG0RC016195	
SCBCT2ZG0RC016245	
SCBCT2ZG0RC016259	
SCBCT2ZG0RC016360	
SCBCT2ZG0RC016388	
SCBCT2ZG0RC016486	
SCBCT2ZG0RC016567	
SCBCT2ZG0RC016648	
SCBCT2ZG0RC016732	
SCBCT2ZG0RC016908	
SCBCT2ZG1RC012883	
SCBCT2ZG1RC013029	
SCBCT2ZG1RC013676	

SCBCT2ZG1RC013726	
SCBCT2ZG1RC014231	
SCBCT2ZG1RC014326	
SCBCT2ZG1RC014536	
SCBCT2ZG1RC014665	
SCBCT2ZG1RC015024	
SCBCT2ZG1RC015430	
SCBCT2ZG1RC015878	
SCBCT2ZG1RC015959	
SCBCT2ZG1RC016304	
SCBCT2ZG1RC016321	
SCBCT2ZG1RC016335	
SCBCT2ZG1RC016352	
SCBCT2ZG1RC016609	
SCBCT2ZG1RC017016	
SCBCT2ZG1RC017064	
SCBCT2ZG1RC017078	
SCBCT2ZG1RC017081	
SCBCT2ZG1RC017226	
SCBCT2ZG2RC013542	
SCBCT2ZG2RC013718	
SCBCT2ZG2RC013914	
SCBCT2ZG2RC014030	
SCBCT2ZG2RC014707	
SCBCT2ZG2RC014724	
SCBCT2ZG2RC014853	
SCBCT2ZG2RC014867	
SCBCT2ZG2RC014948	
SCBCT2ZG2RC015663	
SCBCT2ZG2RC016103	
SCBCT2ZG2RC016201	
SCBCT2ZG2RC016229	
SCBCT2ZG2RC016327	
SCBCT2ZG2RC016540	
SCBCT2ZG2RC016943	
SCBCT2ZG2RC016960	
SCBCT2ZG2RC016974	
SCBCT2ZG2RC017073	
SCBCT2ZG2RC017218	
SCBCT2ZG3RC012626	
SCBCT2ZG3RC013498	
SCBCT2ZG3RC014148	
SCBCT2ZG3RC014408	
SCBCT2ZG3RC014649	

SCBCT2ZG3RC014909	
SCBCT2ZG3RC015283	
SCBCT2ZG3RC015302	
SCBCT2ZG3RC015526	
SCBCT2ZG3RC016305	
SCBCT2ZG3RC016384	
SCBCT2ZG3RC016451	
SCBCT2ZG3RC016546	
SCBCT2ZG3RC016742	
SCBCT2ZG3RC016952	
SCBCT2ZG3RC016997	
SCBCT2ZG3RC017132	
SCBCT2ZG3RC017213	
SCBCT2ZG3RC017230	
SCBCT2ZG4RC012926	
SCBCT2ZG4RC013154	
SCBCT2ZG4RC013526	
SCBCT2ZG4RC013560	
SCBCT2ZG4RC013896	
SCBCT2ZG4RC013929	
SCBCT2ZG4RC013946	
SCBCT2ZG4RC014000	
SCBCT2ZG4RC014188	
SCBCT2ZG4RC014224	
SCBCT2ZG4RC014630	
SCBCT2ZG4RC014966	
SCBCT2ZG4RC015177	
SCBCT2ZG4RC015437	
SCBCT2ZG4RC016006	
SCBCT2ZG4RC016524	
SCBCT2ZG4RC016667	
SCBCT2ZG4RC016703	
SCBCT2ZG4RC016801	
SCBCT2ZG4RC016989	
SCBCT2ZG4RC017110	
SCBCT2ZG4RC017141	
SCBCT2ZG4RC017186	
SCBCT2ZG5RC012143	
SCBCT2ZG5RC012241	
SCBCT2ZG5RC012594	
SCBCT2ZG5RC012868	
SCBCT2ZG5RC012871	
SCBCT2ZG5RC012952	
SCBCT2ZG5RC013521	

SCBCT2ZG5RC013549	
SCBCT2ZG5RC013633	
SCBCT2ZG5RC013907	
SCBCT2ZG5RC013955	
SCBCT2ZG5RC014359	
SCBCT2ZG5RC014412	
SCBCT2ZG5RC014698	
SCBCT2ZG5RC014801	
SCBCT2ZG5RC014944	
SCBCT2ZG5RC015012	
SCBCT2ZG5RC015138	
SCBCT2ZG5RC015298	
SCBCT2ZG5RC016516	
SCBCT2ZG5RC016564	
SCBCT2ZG5RC016662	
SCBCT2ZG5RC016726	
SCBCT2ZG5RC016757	
SCBCT2ZG5RC016788	
SCBCT2ZG5RC016886	
SCBCT2ZG5RC016919	
SCBCT2ZG5RC016970	
SCBCT2ZG5RC017004	
SCBCT2ZG5RC017035	
SCBCT2ZG5RC017195	
SCBCT2ZG6RC012314	
SCBCT2ZG6RC012555	
SCBCT2ZG6RC012569	
SCBCT2ZG6RC012944	
SCBCT2ZG6RC012989	
SCBCT2ZG6RC013026	
SCBCT2ZG6RC013897	
SCBCT2ZG6RC014001	
SCBCT2ZG6RC014063	
SCBCT2ZG6RC014306	
SCBCT2ZG6RC014368	
SCBCT2ZG6RC014516	
SCBCT2ZG6RC014743	
SCBCT2ZG6RC014970	
SCBCT2ZG6RC015035	
SCBCT2ZG6RC015147	
SCBCT2ZG6RC015388	
SCBCT2ZG6RC015391	
SCBCT2ZG6RC015407	
SCBCT2ZG6RC015682	

SCBCT2ZG6RC015956	
SCBCT2ZG6RC015990	
SCBCT2ZG6RC016301	
SCBCT2ZG6RC016430	
SCBCT2ZG6RC016492	
SCBCT2ZG6RC016623	
SCBCT2ZG6RC016699	
SCBCT2ZG6RC016752	
SCBCT2ZG6RC016783	
SCBCT2ZG6RC016833	
SCBCT2ZG6RC016976	
SCBCT2ZG6RC016993	
SCBCT2ZG6RC017030	
SCBCT2ZG6RC017108	
SCBCT2ZG6RC017156	
SCBCT2ZG6RC017173	
SCBCT2ZG6RC017206	
SCBCT2ZG7RC012192	
SCBCT2ZG7RC012581	
SCBCT2ZG7RC013004	
SCBCT2ZG7RC013410	
SCBCT2ZG7RC014024	
SCBCT2ZG7RC014346	
SCBCT2ZG7RC014489	
SCBCT2ZG7RC014573	
SCBCT2ZG7RC015402	
SCBCT2ZG7RC015495	
SCBCT2ZG7RC016212	
SCBCT2ZG7RC016243	
SCBCT2ZG7RC016274	
SCBCT2ZG7RC016288	
SCBCT2ZG7RC016307	
SCBCT2ZG7RC016355	
SCBCT2ZG7RC016419	
SCBCT2ZG7RC016436	
SCBCT2ZG7RC016520	
SCBCT2ZG7RC016677	
SCBCT2ZG7RC016694	
SCBCT2ZG7RC017103	
SCBCT2ZG7RC017120	
SCBCT2ZG7RC017148	
SCBCT2ZG7RC017151	
SCBCT2ZG7RC017215	
SCBCT2ZG8RC013495	

SCBCT2ZG8RC013867	
SCBCT2ZG8RC013870	
SCBCT2ZG8RC013934	
SCBCT2ZG8RC013979	
SCBCT2ZG8RC014016	
SCBCT2ZG8RC014114	
SCBCT2ZG8RC014226	
SCBCT2ZG8RC014386	
SCBCT2ZG8RC014548	
SCBCT2ZG8RC014677	
SCBCT2ZG8RC014761	
SCBCT2ZG8RC014792	
SCBCT2ZG8RC014940	
SCBCT2ZG8RC015022	
SCBCT2ZG8RC015179	
SCBCT2ZG8RC015232	
SCBCT2ZG8RC015456	
SCBCT2ZG8RC016235	
SCBCT2ZG8RC016333	
SCBCT2ZG8RC016381	
SCBCT2ZG8RC016669	
SCBCT2ZG8RC016767	
SCBCT2ZG8RC016803	
SCBCT2ZG8RC016915	
SCBCT2ZG8RC016932	
SCBCT2ZG8RC017093	
SCBCT2ZG8RC017305	
SCBCT2ZG8RC017319	
SCBCT2ZG9RC012517	
SCBCT2ZG9RC012632	
SCBCT2ZG9RC012954	
SCBCT2ZG9RC013540	
SCBCT2ZG9RC013750	
SCBCT2ZG9RC013764	
SCBCT2ZG9RC014039	
SCBCT2ZG9RC014221	
SCBCT2ZG9RC014445	
SCBCT2ZG9RC014560	
SCBCT2ZG9RC014610	
SCBCT2ZG9RC014767	
SCBCT2ZG9RC015966	
SCBCT2ZG9RC016292	
SCBCT2ZG9RC016552	
SCBCT2ZG9RC016633	

SCBCT2ZG9RC016681	
SCBCT2ZG9RC016910	
SCBCT2ZG9RC016924	
SCBCT2ZG9RC016941	
SCBCT2ZG9RC017250	
SCBCT2ZGXRC012168	
SCBCT2ZGXRC012252	
SCBCT2ZGXRC013014	
SCBCT2ZGXRC013918	
SCBCT2ZGXRC014065	
SCBCT2ZGXRC014745	
SCBCT2ZGXRC014776	
SCBCT2ZGXRC014860	
SCBCT2ZGXRC014924	
SCBCT2ZGXRC015068	
SCBCT2ZGXRC015183	
SCBCT2ZGXRC015281	
SCBCT2ZGXRC015314	
SCBCT2ZGXRC016124	
SCBCT2ZGXRC016172	
SCBCT2ZGXRC016186	
SCBCT2ZGXRC016253	
SCBCT2ZGXRC016270	
SCBCT2ZGXRC016284	
SCBCT2ZGXRC016639	
SCBCT2ZGXRC016673	
SCBCT2ZGXRC016821	
SCBCT2ZGXRC016866	
SCBDT4ZG0RC012325	
SCBDT4ZG0RC012499	
SCBDT4ZG0RC012535	
SCBDT4ZG0RC012695	
SCBDT4ZG0RC012714	
SCBDT4ZG0RC012812	
SCBDT4ZG0RC013104	
SCBDT4ZG0RC013555	
SCBDT4ZG0RC013653	
SCBDT4ZG0RC014107	
SCBDT4ZG0RC014141	
SCBDT4ZG0RC014155	
SCBDT4ZG0RC014186	
SCBDT4ZG0RC014222	
SCBDT4ZG0RC014558	
SCBDT4ZG0RC015158	

SCBDT4ZG0RC015189	
SCBDT4ZG0RC015208	
SCBDT4ZG0RC015354	
SCBDT4ZG0RC015449	
SCBDT4ZG0RC015502	
SCBDT4ZG0RC015547	
SCBDT4ZG0RC015628	
SCBDT4ZG0RC016021	
SCBDT4ZG0RC016410	
SCBDT4ZG0RC016505	
SCBDT4ZG0RC016522	
SCBDT4ZG0RC016617	
SCBDT4ZG0RC016777	
SCBDT4ZG0RC017184	
SCBDT4ZG0RC017363	
SCBDT4ZG1RC012303	
SCBDT4ZG1RC012463	
SCBDT4ZG1RC013225	
SCBDT4ZG1RC013547	
SCBDT4ZG1RC013645	
SCBDT4ZG1RC013712	
SCBDT4ZG1RC013743	
SCBDT4ZG1RC014150	
SCBDT4ZG1RC014424	
SCBDT4ZG1RC014679	
SCBDT4ZG1RC014746	
SCBDT4ZG1RC014813	
SCBDT4ZG1RC014844	
SCBDT4ZG1RC014911	
SCBDT4ZG1RC015296	
SCBDT4ZG1RC015458	
SCBDT4ZG1RC015539	
SCBDT4ZG1RC015928	
SCBDT4ZG1RC015962	
SCBDT4ZG1RC016092	
SCBDT4ZG1RC016660	
SCBDT4ZG1RC016805	
SCBDT4ZG1RC016867	
SCBDT4ZG1RC016934	
SCBDT4ZG2RC012164	
SCBDT4ZG2RC012570	
SCBDT4ZG2RC012939	
SCBDT4ZG2RC013878	
SCBDT4ZG2RC014061	

SCBDT4ZG2RC014111	
SCBDT4ZG2RC014125	
SCBDT4ZG2RC014657	
SCBDT4ZG2RC014769	
SCBDT4ZG2RC015064	
SCBDT4ZG2RC015128	
SCBDT4ZG2RC015419	
SCBDT4ZG2RC015565	
SCBDT4ZG2RC015601	
SCBDT4ZG2RC016473	
SCBDT4ZG2RC016831	
SCBDT4ZG2RC016876	
SCBDT4ZG2RC016926	
SCBDT4ZG2RC016991	
SCBDT4ZG2RC017168	
SCBDT4ZG3RC013047	
SCBDT4ZG3RC013159	
SCBDT4ZG3RC013372	
SCBDT4ZG3RC013534	
SCBDT4ZG3RC013579	
SCBDT4ZG3RC013937	
SCBDT4ZG3RC013968	
SCBDT4ZG3RC014134	
SCBDT4ZG3RC014179	
SCBDT4ZG3RC014201	
SCBDT4ZG3RC014876	
SCBDT4ZG3RC014926	
SCBDT4ZG3RC015140	
SCBDT4ZG3RC015249	
SCBDT4ZG3RC015462	
SCBDT4ZG3RC015624	
SCBDT4ZG3RC016059	
SCBDT4ZG3RC016126	
SCBDT4ZG3RC016174	
SCBDT4ZG3RC016210	
SCBDT4ZG3RC016465	
SCBDT4ZG3RC016627	
SCBDT4ZG3RC016711	
SCBDT4ZG3RC016725	
SCBDT4ZG3RC016871	
SCBDT4ZG3RC016921	
SCBDT4ZG3RC017079	
SCBDT4ZG3RC017101	
SCBDT4ZG3RC017115	

SCBDT4ZG3RC017339	
SCBDT4ZG4RC012215	
SCBDT4ZG4RC013283	
SCBDT4ZG4RC013333	
SCBDT4ZG4RC013395	
SCBDT4ZG4RC013512	
SCBDT4ZG4RC013641	
SCBDT4ZG4RC013686	
SCBDT4ZG4RC013736	
SCBDT4ZG4RC013882	
SCBDT4ZG4RC013994	
SCBDT4ZG4RC014076	
SCBDT4ZG4RC014417	
SCBDT4ZG4RC014420	
SCBDT4ZG4RC014661	
SCBDT4ZG4RC014675	
SCBDT4ZG4RC014692	
SCBDT4ZG4RC014756	
SCBDT4ZG4RC014997	
SCBDT4ZG4RC015132	
SCBDT4ZG4RC015180	
SCBDT4ZG4RC015342	
SCBDT4ZG4RC015485	
SCBDT4ZG4RC016068	
SCBDT4ZG4RC016216	
SCBDT4ZG4RC016331	
SCBDT4ZG4RC016488	
SCBDT4ZG4RC016538	
SCBDT4ZG4RC016555	
SCBDT4ZG4RC016605	
SCBDT4ZG4RC016717	
SCBDT4ZG4RC016751	
SCBDT4ZG4RC016894	
SCBDT4ZG4RC016958	
SCBDT4ZG4RC017012	
SCBDT4ZG4RC017026	
SCBDT4ZG5RC012322	
SCBDT4ZG5RC012630	
SCBDT4ZG5RC013583	
SCBDT4ZG5RC013888	
SCBDT4ZG5RC013972	
SCBDT4ZG5RC014037	
SCBDT4ZG5RC014054	
SCBDT4ZG5RC014071	

SCBDT4ZG5RC014166	
SCBDT4ZG5RC014247	
SCBDT4ZG5RC014314	
SCBDT4ZG5RC014328	
SCBDT4ZG5RC014393	
SCBDT4ZG5RC014491	
SCBDT4ZG5RC014524	
SCBDT4ZG5RC014667	
SCBDT4ZG5RC014765	
SCBDT4ZG5RC014894	
SCBDT4ZG5RC015124	
SCBDT4ZG5RC015172	
SCBDT4ZG5RC015205	
SCBDT4ZG5RC015284	
SCBDT4ZG5RC015334	
SCBDT4ZG5RC015561	
SCBDT4ZG5RC016001	
SCBDT4ZG5RC016063	
SCBDT4ZG5RC016130	
SCBDT4ZG5RC016144	
SCBDT4ZG5RC016189	
SCBDT4ZG5RC016323	
SCBDT4ZG5RC016418	
SCBDT4ZG5RC016449	
SCBDT4ZG5RC016550	
SCBDT4ZG5RC017066	
SCBDT4ZG5RC017083	
SCBDT4ZG6RC012202	
SCBDT4ZG6RC012250	
SCBDT4ZG6RC012331	
SCBDT4ZG6RC012507	
SCBDT4ZG6RC012765	
SCBDT4ZG6RC013012	
SCBDT4ZG6RC013057	
SCBDT4ZG6RC013219	
SCBDT4ZG6RC013589	
SCBDT4ZG6RC013740	
SCBDT4ZG6RC013902	
SCBDT4ZG6RC014015	
SCBDT4ZG6RC014158	
SCBDT4ZG6RC014161	
SCBDT4ZG6RC014399	
SCBDT4ZG6RC014550	
SCBDT4ZG6RC014595	

SCBDT4ZG6RC014760	
SCBDT4ZG6RC014791	
SCBDT4ZG6RC014807	
SCBDT4ZG6RC014869	
SCBDT4ZG6RC015116	
SCBDT4ZG6RC015150	
SCBDT4ZG6RC015164	
SCBDT4ZG6RC015312	
SCBDT4ZG6RC016055	
SCBDT4ZG6RC016122	
SCBDT4ZG6RC016170	
SCBDT4ZG6RC016184	
SCBDT4ZG6RC016346	
SCBDT4ZG6RC016377	
SCBDT4ZG6RC016413	
SCBDT4ZG6RC016511	
SCBDT4ZG6RC016637	
SCBDT4ZG6RC016721	
SCBDT4ZG6RC016864	
SCBDT4ZG6RC016900	
SCBDT4ZG6RC016962	
SCBDT4ZG6RC017092	
SCBDT4ZG6RC017187	
SCBDT4ZG6RC017240	
SCBDT4ZG7RC012208	
SCBDT4ZG7RC012743	
SCBDT4ZG7RC012788	
SCBDT4ZG7RC012922	
SCBDT4ZG7RC013228	
SCBDT4ZG7RC013391	
SCBDT4ZG7RC013679	
SCBDT4ZG7RC014170	
SCBDT4ZG7RC014458	
SCBDT4ZG7RC014752	
SCBDT4ZG7RC014959	
SCBDT4ZG7RC015075	
SCBDT4ZG7RC015321	
SCBDT4ZG7RC015481	
SCBDT4ZG7RC015531	
SCBDT4ZG7RC015691	
SCBDT4ZG7RC016081	
SCBDT4ZG7RC016193	
SCBDT4ZG7RC016453	
SCBDT4ZG7RC016484	

SCBDT4ZG7RC016646	
SCBDT4ZG7RC016744	
SCBDT4ZG7RC016811	
SCBDT4ZG7RC016906	
SCBDT4ZG7RC017022	
SCBDT4ZG7RC017036	
SCBDT4ZG7RC017070	
SCBDT4ZG7RC017179	
SCBDT4ZG8RC000312	
SCBDT4ZG8RC012198	
SCBDT4ZG8RC012296	
SCBDT4ZG8RC012668	
SCBDT4ZG8RC012959	
SCBDT4ZG8RC013044	
SCBDT4ZG8RC013271	
SCBDT4ZG8RC013657	
SCBDT4ZG8RC014033	
SCBDT4ZG8RC014369	
SCBDT4ZG8RC014467	
SCBDT4ZG8RC015019	
SCBDT4ZG8RC015098	
SCBDT4ZG8RC015120	
SCBDT4ZG8RC015263	
SCBDT4ZG8RC015358	
SCBDT4ZG8RC015408	
SCBDT4ZG8RC015442	
SCBDT4ZG8RC015778	
SCBDT4ZG8RC015974	
SCBDT4ZG8RC016025	
SCBDT4ZG8RC016073	
SCBDT4ZG8RC016350	
SCBDT4ZG8RC016445	
SCBDT4ZG8RC016459	
SCBDT4ZG8RC016476	
SCBDT4ZG8RC016591	
SCBDT4ZG8RC016719	
SCBDT4ZG8RC016882	
SCBDT4ZG8RC017062	
SCBDT4ZG8RC017191	
SCBDT4ZG8RC017272	
SCBDT4ZG9RC012372	
SCBDT4ZG9RC012405	
SCBDT4ZG9RC012968	
SCBDT4ZG9RC013084	

SCBDT4ZG9RC013263	
SCBDT4ZG9RC013327	
SCBDT4ZG9RC013358	
SCBDT4ZG9RC013442	
SCBDT4ZG9RC013618	
SCBDT4ZG9RC013747	
SCBDT4ZG9RC013893	
SCBDT4ZG9RC014087	
SCBDT4ZG9RC014090	
SCBDT4ZG9RC014137	
SCBDT4ZG9RC014381	
SCBDT4ZG9RC014431	
SCBDT4ZG9RC014543	
SCBDT4ZG9RC014817	
SCBDT4ZG9RC014946	
SCBDT4ZG9RC015224	
SCBDT4ZG9RC015398	
SCBDT4ZG9RC015949	
SCBDT4ZG9RC015997	
SCBDT4ZG9RC016051	
SCBDT4ZG9RC016096	
SCBDT4ZG9RC016101	
SCBDT4ZG9RC016311	
SCBDT4ZG9RC016342	
SCBDT4ZG9RC016373	
SCBDT4ZG9RC016390	
SCBDT4ZG9RC016423	
SCBDT4ZG9RC016440	
SCBDT4ZG9RC016518	
SCBDT4ZG9RC016650	
SCBDT4ZG9RC016695	
SCBDT4ZG9RC016888	
SCBDT4ZG9RC016938	
SCBDT4ZG9RC016972	
SCBDT4ZG9RC017054	
SCBDT4ZGXRC012221	
SCBDT4ZGXRC012414	
SCBDT4ZGXRC012543	
SCBDT4ZGXRC012624	
SCBDT4ZGXRC012705	
SCBDT4ZGXRC012803	
SCBDT4ZGXRC012817	
SCBDT4ZGXRC012915	
SCBDT4ZGXRC013028	

INTERNAL

SCBDT4ZGXRC013708	
SCBDT4ZGXRC013868	
SCBDT4ZGXRC014146	
SCBDT4ZGXRC014373	
SCBDT4ZGXRC014471	
SCBDT4ZGXRC014504	
SCBDT4ZGXRC014535	
SCBDT4ZGXRC014714	
SCBDT4ZGXRC014907	
SCBDT4ZGXRC015426	
SCBDT4ZGXRC015958	
SCBDT4ZGXRC016043	
SCBDT4ZGXRC016088	
SCBDT4ZGXRC016222	
SCBDT4ZGXRC016382	
SCBDT4ZGXRC016429	
SCBDT4ZGXRC016544	
SCBDT4ZGXRC016575	
SCBDT4ZGXRC016611	
SCBDT4ZGXRC016656	
SCBDT4ZGXRC016771	
SCBDT4ZGXRC017032	
SCBDT4ZGXRC017158	