

Condition

ATTENTION:

THIS IS A TECH TIP, NOT A TECHNICAL BULLETIN.

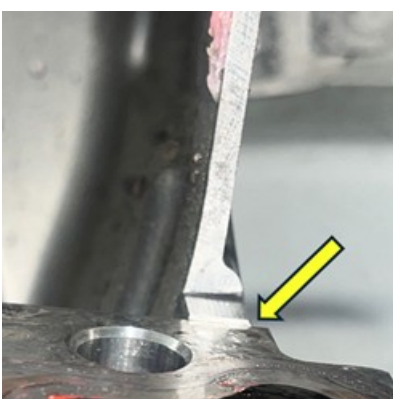
TECH TIPS ARE NOT ASSOCIATED WITH WARRANTY CLAIMING.

Applicable Vehicles					
Model(s)	Year	Eng. Code	Trans. Code	VIN Range From	VIN Range To
Taos	2022 - 2024	1.5T (DNKA)	All	All	All
Taos	2025	1.5T (DYBA)	All	All	All
Jetta	2022 - 2025	1.5T (DNKA)	All	All	All

Revision Table			
Instance Number	Published Date	Version Number	Reason For Update
2078031/1	06/12/2025	13-25-01TT	Original Publication

Technical Background

While removing the cylinder head, the technician may notice a difference in height between the engine support bracket and the engine block. (See examples below.)



Production Solution

No changes in production.

Service

No repairs or adjustments are necessary. The engine mount is installed after the cylinder head and engine block are assembled at the engine factory. This does not impede the clamping area between the cylinder head and engine block as the difference in height is made up in the thickness of the head gasket.

Warranty

Information only.

Required Parts and Tools

No special parts required.

No special tools required.

Additional Information

© 2025 Volkswagen Group of America, Inc. All rights reserved. Information contained in this document is based on the latest information available at the time of printing and is subject to the copyright and other intellectual property rights of Volkswagen Group of America, Inc., its affiliated companies and its licensors. All rights are reserved to make changes at any time without notice. No part of this document may be reproduced, stored in a retrieval system, or transmitted in any form or by any means, electronic, mechanical, photocopying, recording, or otherwise, nor may these materials be modified or reposted to other sites, without the prior expressed written permission of the publisher.