

Tie Rod Assembly Part Breakdown

PB-33-004-FTL

Creation Date: 2025-06-10

Engine or Vehicle Affected:

- ▶ Recreation Vehicle
- ▶ S2 RV
- ▶ C2 Plus
- ▶ S2 Plus
- ▶ Saf-T-Liner C2
- ▶ S2
- ▶ Walk-in Van
- ▶ Shuttle Bus
- ▶ 5th Generation Cascadia
- ▶ Business Class M2-Plus
- ▶ Business Class M2
- ▶ 108SD Plus/114SD Plus
- ▶ 108SD/114SD
- ▶ 112SD and Coronado
- ▶ New Cascadia
- ▶ eM2
- ▶ Cascadia

General Information

This bulletin provides a listing of tie rod assembly numbers along with the breakdown of tie rod ends for each assembly. See the workshop manual for instructions on replacing the tie rods and determining which tie rod is installed.

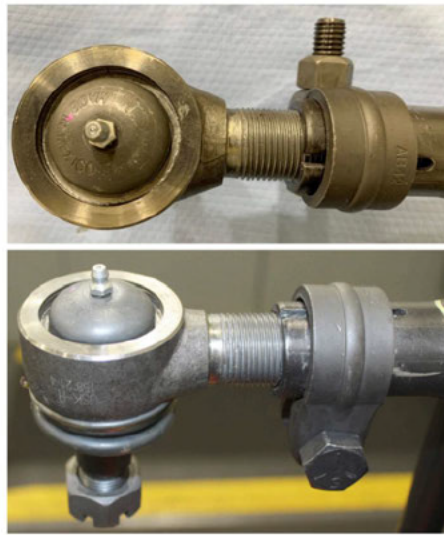
- For a list of USK tie rod assembly and tie rod end part numbers, see Table [1](#) and Fig. [1](#).

Table 1, USK Tie Rod Assembly and Tie Rod End Part Numbers

Tie Rod Assembly	Tie Rod End-LH	Tie Rod End-RH
MBA 6803300403	MBA 6073380010	MBA 6073381410
MBA 6803300503		
MBA 6803307303		
MBA 6803307403		
MBA 6803307503		

Tie Rod Assembly	Tie Rod End-LH	Tie Rod End-RH
MBA 6803307803	MBA 6073380110	MBA 6073381510
MBA 6803307903		
MBA 6803308003		
MBA 6803308103		
MBA 6803308203		
MBA 6803308303		
MBA 6803308403	MBA 6073380210	MBA 6073381610
MBA 6803304803		
MBA 6803304903		
MBA 6803305103		
MBA 6803308503		
MBA 6803308603		
MBA 6803308703		
MBA 6803308803	MBA 6073380310	MBA 6073381710
MBA 6803308903		
MBA 6803300303		
MBA 6803309003	MBA 6073380410	MBA 6073381810
MBA 6803300603		
MBA 6803307003	MBA 6073383610	MBA 6073383710
MBA 6803300703	MBA 6073383810	MBA 6073383910
MBA 6803300803		
MBA 6803300903		
MBA 6803300203	MBA 6073383310	MBA 6073383410

Table 1, USK Tie Rod Assembly and Tie Rod End Part Numbers



02/15/2022



f330492

➤ **Note:** For replacement tie rod ends, verify that the style and shape of the tie rod ends to be replaced match these photos. The chart only shows tie rod ends matching this shape and style.

Fig. 1, USK Tie Rod Assembly and Tie Rod End Part Numbers

- For a list of TRW Tie Rod Assembly and Tie Rod End Part Numbers, see Table 2 and Fig. 2.

Table 2, TRW Tie Rod Assembly and Tie Rod End Part Numbers

Tie Rod Assembly	Tie Rod End-LH	Tie Rod End-RH
MBA 6803301203	MBA 6073380510	MBA 6073381910
MBA 6803304503		
MBA 6803304303	MBA 6073380610	MBA 6073382010
MBA 6803304403		
MBA 6803304003	MBA 6073380710	MBA 6073382110
MBA 6803304103		
MBA 6803304203		
MBA 6803303203	MBA 6073380810	MBA 6073382210
MBA 6803303303		
MBA 6803303403		
MBA 6803303503		

Tie Rod Assembly	Tie Rod End-LH	Tie Rod End-RH
MBA 6803303603	MBA 6073380910	MBA 6073382310
MBA 6803303703		
MBA 6803303903		
MBA 6803305303		
MBA 6803305403		
MBA 6803302703	MBA 6073381010	MBA 6073382410
MBA 6803302803		
MBA 6803302903		
MBA 6803303003		
MBA 6803303103		
MBA 6803303803		
MBA 6803309803	MBA 6073381110	MBA 6073382510
MBA 6803309903	MBA 6073381210	MBA 6073382610
MBA 6803300003		

Table 2, TRW Tie Rod Assembly and Tie Rod End Part Numbers



02/15/2022

f330493

Note: For replacement tie rod ends, verify that the style and shape of the tie rod ends to be replaced match these photos. The chart only shows tie rod ends matching this shape and style.

Fig. 2, TRW Tie Rod Assembly and Tie Rod End Part Numbers

Note:

F07
F18
F12
F32
F33
F39
F12
F22
F16
F26
F35
F36
F15
F25
F37
F03
F15
F25
F18
F41
F42
F43
F44

Document Number: 0000159715

Topic Publication Date: 2025-06-10