

Field campaign

Topic	Limited Key Fob Range Continental GT/GTC/Flying Spur 25MY (SC25/29)
Market area	Bentley: worldwide (2WBE),China 796 VW Import Comp. Ltd (Vico), Beijing (6796)
Brand	Bentley
Transaction No.	2077867/1
Campaign number	ED58
Note	
Type	
US code	

Vehicle data

25MY Continental GT/GTC & Flying Spur

Sales types

Type	MY	Brand	Designation	Engine code	Gearbox code	Final drive code
Z24*	2025	E		*	*	*
Z32*	2025	E		*	*	*
Z23*	2025	E		*	*	*

Documents

Document name
master.xml
ed58vinlist.pdf

Notes



Technical background

The key fob is designed to have an operational working range of up to a maximum of 40 metres away from the vehicle, however on specific vehicles it fails to do so and can only operate up to a range of 5 metres. The reason for this is due to the central locking antenna short circuiting to ground. This is due to a defective Body Control Module (BCM) (Part 99207064 FK) which is missing component R1524 (figure 1).

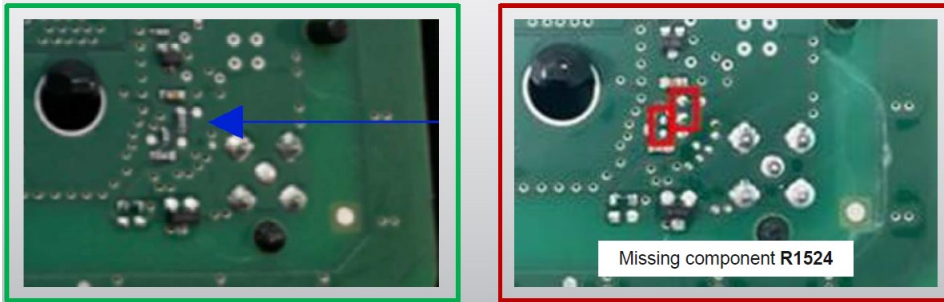


Figure 1

Remedy

Perform a check of the range of the key fob, if it fails to operate within the required parameters, replace the onboard supply control unit 2 (J393).

Customer notification

Customers do not need to be informed directly of this campaign. Please ensure all affected vehicles are checked and repaired at the earliest opportunity.

Warranty

Claim Type: 790 or 710

Service Number: ED58

Damage Code: 00 66

Criteria ID: 01

Labour

Key Fob function check

Labour Operation Code – 97 10 19 99

Time – 10 TU

Onboard supply control unit (J393) to Remove and Fit

Labour Operation Code – 97 10 19 01

Time – 70 TU

Parts

992907064 FK - Control unit (BCM) for conv. system & OB power supply

Parts supply

Refer to ETKA parts catalogue

Parts despatch control

Not applicable

Repair instructions



Technical background

The key fob is designed to have an operational working range of up to a maximum of 40 metres away from the vehicle, however on specific vehicles it fails to do so and can only operate up to a range of 5 metres. The reason for this is due to the central locking antenna short circuiting to ground. This is due to a defective Body Control Module (BCM) (Part 99207064 FK) which is missing component R1524 (figure 1).

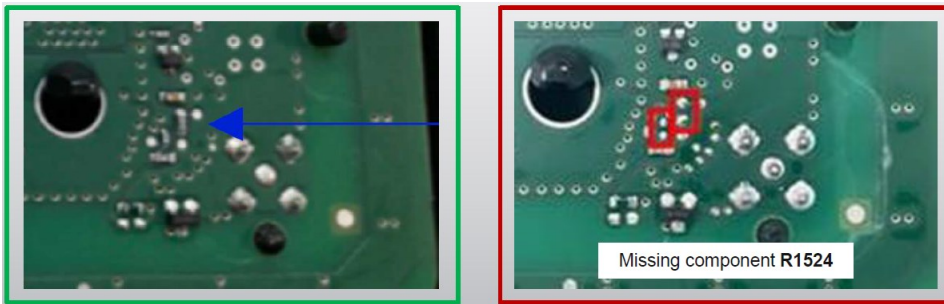


Figure 1

Check

If the vehicle is not already listed as repaired in the 'Repair history' section of ElsaPro, check the 'Identification' section of this document. In the event that the campaign has not been applied, please carry out the required work in accordance with these instructions.

Parts

992907064 FK - Control unit (BCM) for conv. system & OB power supply

Tools

- Bentley ODIS-S vehicle tester. Brand Version MUST be at least 2.35.2 (or higher).

Work

1. Perform a check of the Key fob function from 5 metres, 10 metres, 20 metres and 30 metres away from the vehicle.
2. If the key fob functions over 30m away from the vehicle, no action is required.
3. If the key fob only functions within a range of 5m, but not over 30m.
 - Follow the instructions below for an onboard supply control unit 2 (J393) replacement Refer to ElsaPro Repair Group 97 – 'Onboard supply control unit 2 – To remove and fit'
 - Once replaced, the control unit requires programming via the vehicle tester. Refer to installation instructions within ElsaPro
 - Once programmed, test that the key fob functions at a distance of more than 30 metres from the vehicle to confirm resolution of the fault.

Identification

Once the applicable action has been conducted, the operative must submit a warranty claim as this will show the service campaign action as complete within Elsa Pro "Repair history".

You must also add a yellow paint mark onto the newly fitted control module as per the picture below.



SCBBF5ZG7SC021288	SCBCR2ZG9SC021500	SCBDR4ZG0SC021532
SCBBG53S3SC021380	SCBCG13S4SC021501	SCBBG53S2SC021533
SCBCG13S7SC021444	SCBDG33S6SC021502	SCBBR6ZG0SC021534
SCBCR2ZG5SC021445	SCBBG53S4SC021503	SCBCF13S6SC021535
SCBCJ13S4SC021452	SCBCF13S6SC021504	SCBCF13S8SC021536
SCBCF13S1SC021460	SCBBJ53S8SC021506	SCBBF53S6SC021537
SCBCR2ZG5SC021462	SCBBG53S1SC021507	SCBDR4ZG1SC021538
SCBCF13S4SC021470	SCBCR2ZG3SC021508	SCBCF13S3SC021539
SCBBF53S8SC021474	SCBCF13S5SC021509	SCBDF33SXSC021540
SCBCG13S7SC021475	SCBDF33S1SC021510	SCBDR4ZG3SC021542
SCBDF3ZG1SC021476	SCBBG53S3SC021511	SCBDR4ZG7SC021544
SCBCF13S7SC021477	SCBCR2ZG5SC021512	SCBBG53S9SC021545
SCBBG53S9SC021478	SCBDF33S7SC021513	SCBCF13S0SC021546
SCBBR6ZG7SC021479	SCBBG53S9SC021514	SCBDR4ZG2SC021547
SCBCF13S7SC021480	SCBBJ53S9SC021515	SCBBF53S0SC021548
SCBBG53S9SC021481	SCBCR2ZG2SC021516	SCBDF33S6SC021549
SCBDR4ZG0SC021482	SCBBG53S4SC021517	SCBCR2ZG2SC021550
SCBBR6ZG9SC021483	SCBDG33SXSC021518	SCBCF13S4SC021551
SCBBG53S4SC021484	SCBBR6ZG4SC021519	SCBDR4ZG6SC021552
SCBCR2ZG6SC021485	SCBCG13S8SC021520	SCBCR13S9SC021553
SCBBR6ZG4SC021486	SCBBG53S6SC021521	SCBDF33SXSC021554
SCBCG13S3SC021487	SCBDF33S8SC021522	SCBBF5ZG4SC021555
SCBCG13S5SC021488	SCBBR6ZG6SC021523	SCBCR2ZG3SC021556
SCBDF33S3SC021489	SCBDR4ZG1SC021524	SCBBF53S1SC021557
SCBCF13SXSC021490	SCBBF53SXSC021525	SCBCR2ZG7SC021558
SCBBG53S1SC021491	SCBBR6ZG1SC021526	SCBBF53S5SC021559
SCBBR6ZGXSC021492	SCBCG13S0SC021527	SCBDR4ZG5SC021560
SCBDF33S5SC021493	SCBBR6ZG5SC021528	SCBBG53S7SC021561
SCBDG33S4SC021496	SCBBG53S0SC021529	SCBCG13S2SC021562
SCBCR2ZG2SC021497	SCBDR4ZG7SC021530	SCBBR6ZG7SC021563
SCBBG53S6SC021499	SCBCJ1ZG7SC021531	SCBDF33S2SC021564

SCBCF13S45SC021565	SCBBR6ZG9SC021600	SCBCG13S55SC021636
SCBBG53S6SC021566	SCBDR4ZG4SC021601	SCBBG53S3SC021637
SCBBH53S3SC021568	SCBBJ53S4SC021602	SCBCF13S55SC021638
SCBDR4ZG1SC021569	SCBBR6ZG4SC021603	SCBBR6ZG3SC021639
SCBCF13S8SC021570	SCBDF33SXSC021604	SCBBF53SXSC021640
SCBBF53S6SC021571	SCBCF13S1SC021605	SCBBG53S5SC021641
SCBCR2ZG1SC021572	SCBBG53S3SC021606	SCBCR2ZG7SC021642
SCBDR4ZG3SC021573	SCBCF13S5SC021607	SCBDR4ZG9SC021643
SCBBF5ZG8SC021574	SCBBR6ZG3SC021608	SCBCR2ZG0SC021644
SCBCF13S7SC021575	SCBCH13S6SC021609	SCBBR6ZG9SC021645
SCBBG53S9SC021576	SCBCF13S5SC021610	SCBCF13S4SC021646
SCBDR4ZG0SC021577	SCBBF53S3SC021611	SCBDR4ZG6SC021647
SCBCG13S6SC021578	SCBDF33S9SC021612	SCBBR6ZG4SC021648
SCBDF33S0SC021580	SCBBR53S8SC021613	SCBCJ13S1SC021649
SCBCF13S4SC021582	SCBCF13S2SC021614	SCBBG53S6SC021650
SCBCR2ZG6SC021583	SCBCG13S8SC021615	SCBDR4ZG8SC021651
SCBBR6ZG4SC021584	SCBBG53S6SC021616	SCBBR6ZG6SC021652
SCBDF33SXSC021585	SCBCF13S8SC021617	SCBCF13S1SC021653
SCBBF53S8SC021586	SCBCF13S3SC021623	SCBDF33S3SC021654
SCBCF13S3SC021587	SCBCF13S5SC021624	SCBBG53S5SC021655
SCBBF53S1SC021588	SCBBF53S3SC021625	SCBCF13S7SC021656
SCBCF13S7SC021589	SCBDR4ZG9SC021626	SCBBR53S6SC021657
SCBBR6ZGXSC021590	SCBCR13S1SC021627	SCBDR4ZG0SC021658
SCBCG13S9SC021591	SCBBF53S9SC021628	SCBBG53S2SC021659
SCBBR53S4SC021592	SCBDF33S4SC021629	SCBCF13S9SC021660
SCBDR4ZG9SC021593	SCBBR6ZG7SC021630	SCBCR2ZG0SC021661
SCBBR6ZG7SC021594	SCBCR2ZG2SC021631	SCBCR2ZG2SC021662
SCBCG13S6SC021595	SCBBF53S0SC021632	SCBDF33S4SC021663
SCBBR6ZG0SC021596	SCBDR4ZG6SC021633	SCBBG53S6SC021664
SCBDF33S6SC021597	SCBCF13S8SC021634	SCBCR2ZG8SC021665
SCBBF53S4SC021598	SCBDF33SXSC021635	SCBDF33SXSC021666

SCBBR53S9SC021667
SCBDR4ZG3SC021668
SCBBF53S1SC021669
SCBCR2ZG1SC021670
SCBBF5ZG6SC021671
SCBDF33S5SC021672
SCBCR2ZG7SC021673
SCBBG53S9SC021674
SCBDR4ZG0SC021675
SCBBR6ZG9SC021676
SCBCF13S4SC021677
SCBBG53S6SC021678
SCBDR4ZG8SC021679
SCBCF13S4SC021680
SCBBF5ZG9SC021681
SCBDR4ZG8SC021682
SCBBF53S6SC021683
SCBDR4ZG3SC021685
SCBBF5ZG8SC021686
SCBBR6ZG3SC021687
SCBCF1ZG5SC021688
SCBDR4ZG0SC021689
SCBBF5ZGXSC021690
SCBCF13S9SC021691
SCBCF13S0SC021692
SCBDR4ZG2SC021693
SCBBG53S4SC021694
SCBBR53S3SC021695
SCBCG13S1SC021696