

Field campaign

Topic	Fatigue warning not visible Bentayga Series 24MY (SC24/20)
Market area	United States E05 Bentley USA and rest America (6E05)
Brand	Bentley
Transaction No.	2074877/2
Campaign number	ED13
Note	
Type	
US code	

Vehicle data

Bentayga

Sales types

Type	MY	Brand	Designation	Engine code	Gearbox code	Final drive code
4V1*	2024	E		*	*	*
ZV1*	2024	E		*	*	*

Documents

Document name
master.xml
sc2420vinlist.pdf

Notes



Technical background

When initialising and calibrating the replacement Data bus control unit (J533) one of the adaption channels may not have been written correctly. As a result, the menu entry for the fatigue warning in the Infotainment screen is missing

Should the described issue be evident please conduct the instructions within the Work section of this document

Revision history – TPI 2074877/2

Work section has been revised with further instructions added on how to rectify fault with the fatigue warning.

Remedy

Check the gateway configuration with ODIS.

Customer notification

Customers do not need to be informed directly of this campaign. Please ensure all affected vehicles are checked and repaired at the nearest opportunity.

Warranty

Warranty Type 710 or 790

Damage Service Number ED13

Damage Code 00 66

Diagnostic time

Labour Operation Code 01 50 00 00

Time As per ODIS log (Must not exceed 30 TU)

Parts

Not applicable

Parts supply

Not applicable

Parts despatch control

Not applicable

Repair instructions



Technical background

When initialising and calibrating the replacement Data bus control unit (J533) one of the adaption channels may not have been written correctly. As a result, the menu entry for the fatigue warning in the Infotainment screen is missing

Should the described issue be evident please conduct the instructions within the Work section of this document

Revision history – TPI 2074877/2

Work section has been revised with further instructions added on how to rectify fault with the fatigue warning.

Check

Fatigue warning is not visible (Figure 1) within the Infotainment screen menu after replacement of the Data bus control unit (J533)

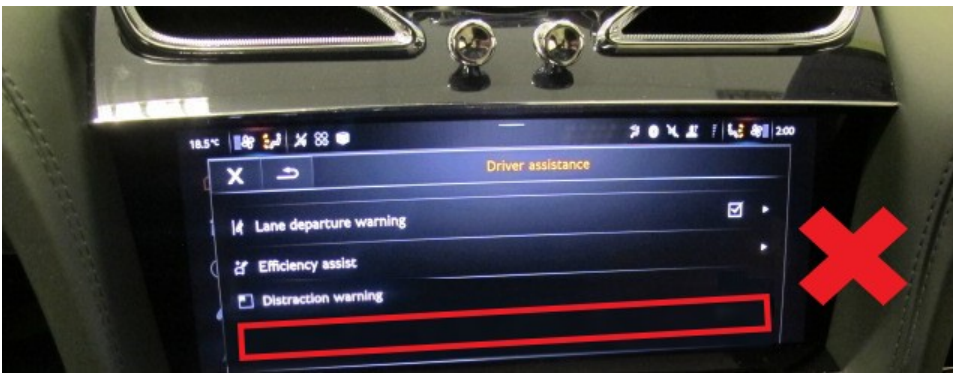


Figure 1

NOTICE
 Figure 2 shows the Fatigue warning (Correct status)

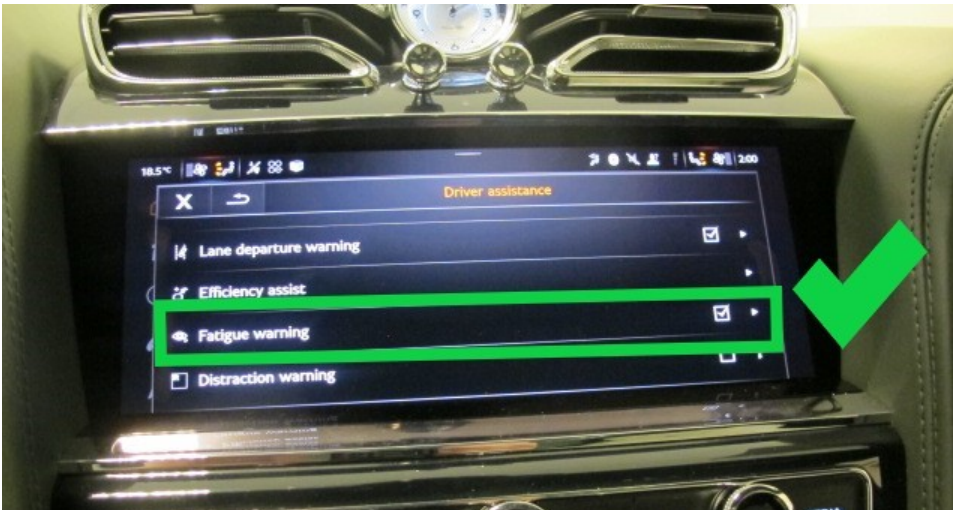


Figure 2

Parts

Not applicable

Work

- Check the latest ODIS version is installed on your diagnostic machine

After initialising the Data bus control unit (J533) the operative must perform the configuration again as follows:

- Connect a suitable 12 volt battery charger to the vehicle before proceeding - Refer to Rep.Gr 27
- Select Guided functions from 0019 Data Bus OBD interface (Gateway) Control module (Figure 3)

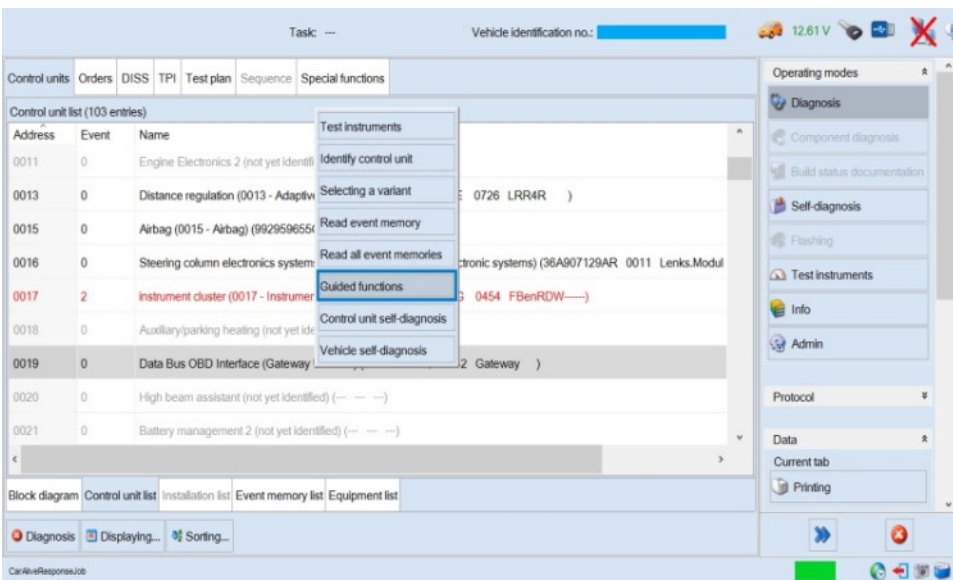


Figure 3

Referring to Figure 4 - Select 0019 - Check control unit configuration > Select Run

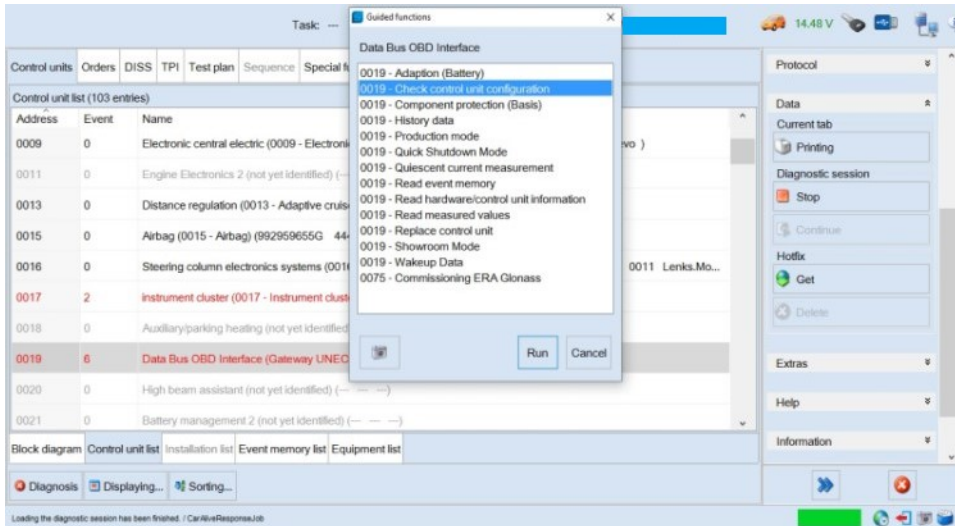


Figure 4

- On completion - Switch off the ignition

Remove the diagnostic interface from the OBD port

Switch off **and** remove the 12 volt battery charger from the vehicle

Close the bonnet, boot and all doors

Lock the vehicle

Wait 5 minutes to allow the vehicle to go into bus silence

When 5 minutes has elapsed, unlock the vehicle and open the driver's door

Switch on the ignition

Carry out a Guided Fault Finding check (GFF)

Erase all applicable DTC's

Hint: In the event the DTC's cannot be cleared the operative must conduct all applicable test plans to completion

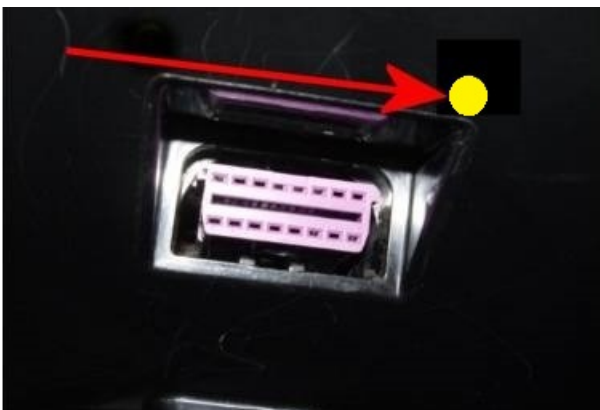
- Once the procedure is complete check the infotainment screen to confirm if the "Fatigue warning" menu entry is displayed and can be selected under the Driver assistance menu as Figure 1

If the instructions are followed in the Work section, and the Fatigue warning is still **not** present on the MMI please follow the below action:

- Select Guided functions from 0019 Data Bus OBD interface (Gateway) Control module (Figure 3)
- Referring to Figure 4 - Select 0019 – replace control unit > Select Run

Identification

Yellow paint mark next to the OBD port



SJAHT2ZV8RC024841	SJAAT2ZV6RC025049	SJAHT2ZV9RC025139	SJAAT2ZV9RC025238	SJAAT2ZV6RC025357
SJAHT2ZV7RC024992	SJAHT2ZV6RC025051	SJAAT2ZV3RC025140	SJAAT2ZV9RC025241	SJAAT2ZVXRC025359
SJAAT2ZV7RC024993	SJAAT2ZV8RC025053	SJAHT2ZV9RC025142	SJAA72ZV5RC025242	SJAHT2ZV8RC025360
SJAHT2ZV0RC024994	SJAHT2ZV1RC025054	SJAAT2ZV9RC025143	SJAAT2ZV1RC025248	SJAAT2ZV8RC025361
SJAAT2ZV0RC024995	SJAAT2ZV3RC025056	SJAAT2ZV2RC025145	SJAAT2ZVXRC025250	SJAAT2ZV3RC025364
SJAHT2ZV6RC024997	SJAHT2ZV7RC025057	SJAA72ZV2RC025148	SJAHT2ZV3RC025251	SJAAT2ZV0RC025368
SJAA72ZV2RC024999	SJAAT2ZV7RC025061	SJAHT2ZVXRC025151	SJAHT2ZV7RC025253	SJAAT2ZVXRC025376
SJAHT2ZV2RC025001	SJAHT2ZV0RC025062	SJAHT2ZV1RC025152	SJAHT2ZV6RC025258	SJAHT2ZV9RC025383
SJAHT2ZV4RC025002	SJAAT2ZV0RC025063	SJAHT2ZV9RC025156	SJAAT2ZVXRC025264	SJAAT2ZV4RC025387
SJAAT2ZV4RC025003	SJAAT2ZV4RC025065	SJAAT2ZV9RC025160	SJAHT2ZV3RC025265	SJAA72ZV2RC025392
SJAAT2ZV6RC025004	SJAHT2ZV8RC025066	SJAHT2ZV2RC025161	SJAA72ZV3RC025269	SJAHT2ZV3RC025394
SJAHT2ZV1RC025006	SJAHT2ZV3RC025069	SJAAT2ZV4RC025163	SJAHT2ZV7RC025270	SJAAT2ZV0RC025399
SJAHT2ZV5RC025008	SJAAT2ZV8RC025070	SJAHT2ZV8RC025164	SJAAT2ZV7RC025271	SJAAT2ZV0RC025404
SJAAT2ZV5RC025009	SJAHT2ZV1RC025071	SJAHT2ZV5RC025168	SJAAT2ZV1RC025279	SJAHT2ZV1RC025409
SJAHT2ZV3RC025010	SJAAT2ZV1RC025072	SJAHT2ZV3RC025170	SJAAT2ZV1RC025282	SJAHT2ZV1RC025412
SJAAT2ZV3RC025011	SJAHT2ZV9RC025075	SJAA72ZVXRC025172	SJAAT2ZV4RC025289	SJAAT2ZV3RC025414
SJAA72ZV1RC025013	SJAAT2ZV2RC025078	SJAAT2ZV7RC025173	SJAAT2ZV4RC025292	SJAAT2ZV9RC025417
SJAHT2ZV0RC025014	SJAHT2ZV6RC025079	SJAAT2ZV0RC025175	SJAAT2ZVXRC025295	SJAA72ZV5RC025418
SJAAT2ZV4RC025017	SJAAT2ZV0RC025080	SJAAT2ZV4RC025180	SJAAT2ZV3RC025297	SJAAT2ZV9RC025420
SJAHT2ZVXRC025019	SJAA72ZV9RC025082	SJAA72ZV0RC025181	SJAAT2ZV5RC025298	SJAHT2ZV4RC025422
SJAHT2ZV8RC025021	SJAHT2ZV8RC025083	SJAAT2ZV8RC025182	SJAAT2ZV7RC025299	SJAAT2ZV8RC025425
SJAA72ZV6RC025024	SJAAT2ZV3RC025087	SJAA72ZV8RC025185	SJAAT2ZV9RC025305	SJAHT2ZV3RC025427
SJAAT2ZV5RC025026	SJAHT2ZV7RC025088	SJAAT2ZV7RC025187	SJAAT2ZV0RC025306	SJAAT2ZV0RC025435
SJAAT2ZV7RC025027	SJAHT2ZV5RC025090	SJAHT2ZV0RC025188	SJAAT2ZV6RC025309	SJAAT2ZV4RC025437
SJAHT2ZV0RC025028	SJAAT2ZV5RC025091	SJAA72ZV4RC025197	SJAAT2ZV6RC025312	SJAAT2ZV4RC025440
SJAAT2ZV0RC025029	SJAA72ZV1RC025092	SJAAT2ZV3RC025199	SJAA72ZVXRC025317	SJAAT2ZV3RC025445
SJAHT2ZV9RC025030	SJAAT2ZV9RC025093	SJAAT2ZV9RC025207	SJAHT2ZV0RC025322	SJAAT2ZV2RC025453
SJAAT2ZV2RC025033	SJAHT2ZV2RC025094	SJAHT2ZV4RC025209	SJAHT2ZV2RC025323	SJAAT2ZVXRC025457
SJAHT2ZV6RC025034	SJAAT2ZV2RC025095	SJAHT2ZV0RC025210	SJAHT2ZV6RC025325	SJAAT2ZV3RC025462
SJAAT2ZV6RC025035	SJAAT2ZV5RC025124	SJAA72ZV7RC025212	SJAAT2ZV6RC025326	SJAHT2ZV9RC025464
SJAAT2ZVXRC025037	SJAHT2ZV9RC025125	SJAHT2ZV6RC025213	SJAHT2ZV1RC025328	SJAAT2ZV9RC025465
SJAHT2ZV5RC025039	SJAAT2ZV0RC025127	SJAHT2ZVXRC025215	SJAHT2ZV3RC025329	SJAHT2ZV6RC025471
SJAAT2ZVXRC025040	SJAHT2ZV2RC025130	SJAAT2ZVXRC025216	SJAA72ZV2RC025330	SJAAT2ZV6RC025472
SJAAT2ZV1RC025041	SJAAT2ZV4RC025132	SJAHT2ZV3RC025217	SJAAT2ZV5RC025334	SJAA72ZV1RC025514
SJAHT2ZV5RC025042	SJAA72ZV0RC025133	SJAHT2ZV7RC025219	SJAAT2ZV2RC025338	SJAHT2ZV7RC025527
SJAHT2ZV7RC025043	SJAAT2ZVXRC025135	SJAAT2ZV9RC025224	SJAHT2ZV6RC025339	SJAAT2ZV9RC025529
SJAA72ZV3RC025045	SJAHT2ZV3RC025136	SJAA72ZV5RC025225	SJAAT2ZVXRC025345	SJAHT2ZV7RC025530
SJAHT2ZV2RC025046	SJAHT2ZV5RC025137	SJAHT2ZV8RC025231	SJAHT2ZV9RC025349	
SJAHT2ZV6RC025048	SJAAT2ZV5RC025138	SJAAT2ZVXRC025233	SJAHT2ZV9RC025352	