



GROUP

MODEL

FUE

**2021-2022MY  
Sorento (MQ4a) and  
2023MY  
Sportage (NQ5, NQ5a)  
w/Theta III 2.5L GDI**

NUMBER

DATE

**068****June 2025**

## TECHNICAL SERVICE BULLETIN

SUBJECT:

### GDI FUEL INJECTOR REPLACEMENT FOR MISFIRE DTC(S) THETA III 2.5L GDI (CA2505)

This bulletin provides information regarding cylinder misfire DTCs stored on some 2021-2023MY Kia models listed in the on the table on page 4, equipped with a naturally aspirated Theta III 2.5L GDI engine and dual fuel injection, where a low-pressure (MPI) injector and a high-pressure (GDI) injector independently supply fuel to each cylinder. A GDI fuel injector may become damaged due to exposure to fuel containing ethanol, potentially resulting in the malfunction indicator lamp (MIL) illuminating, along with no-start, misfire, and/or reduced power, while driving at highway speeds remains possible. If any of the misfire DTCs listed below are stored, follow the flowchart on page 2 and, as applicable, the repair procedure in this publication to replace all four GDI injectors and related parts.

#### DTC Description:

P030000 - Random/Multiple Cylinder Misfire Detected

P030100 - Cylinder 1 Misfire Detected

P030200 - Cylinder 2 Misfire Detected

P030300 - Cylinder 3 Misfire Detected

P030400 - Cylinder 4 Misfire Detected

#### NOTICE

A Technical Service Bulletin is a field fix repair program without customer notification that may be performed during the warranty period.

**This bulletin should only be performed with valid customer complaint of M.I.L 'ON' with a no-start, misfire, and/or reduced power.**

Repair status for a VIN is provided on KDealer+ (Service → Warranty Coverage → Warranty Coverage Inquiry. **If FUE068/CA2505 is complete, any subsequent or follow up concerns need to be addressed under the terms of Kia's Basic Limited Warranty Coverage.**

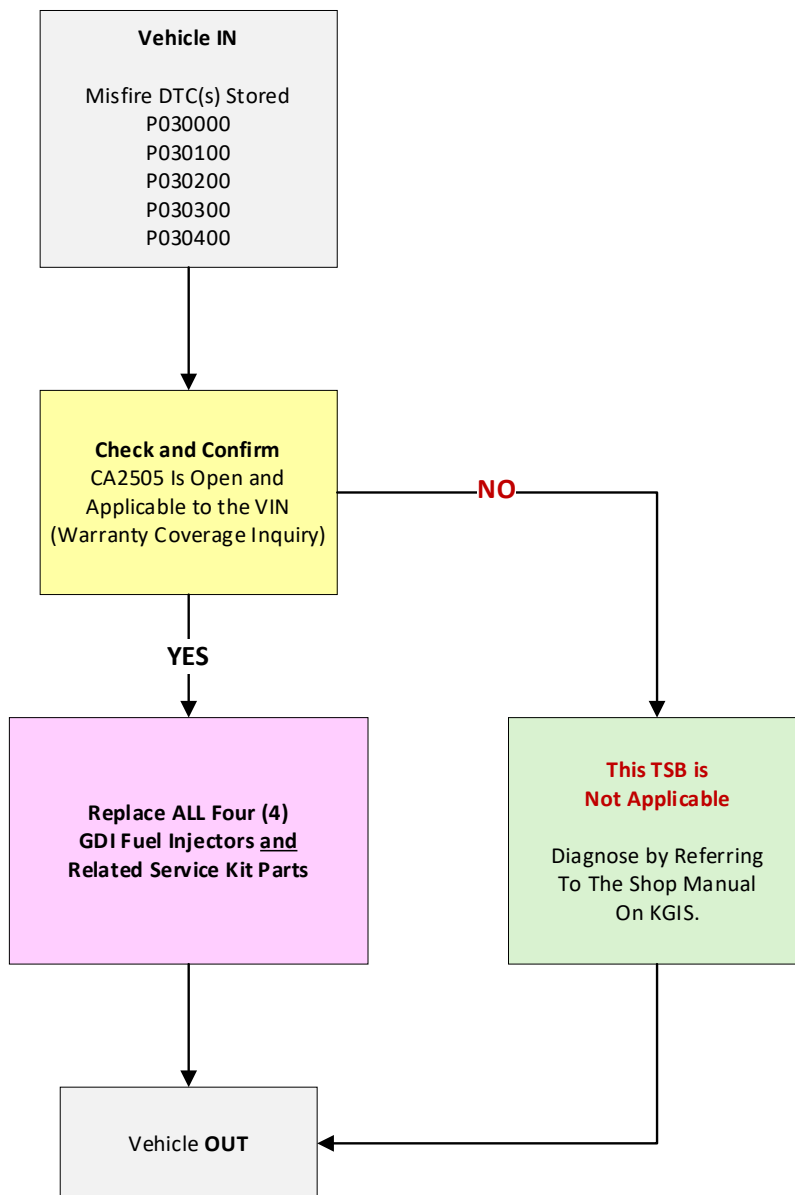
## Flowchart:

**① IMPORTANT**

**Customer complaint of a MIL 'ON' with a no-start, misfire, and/or reduced power MUST be stated in the opening RO and Claim Notes.**

Using KDS confirm that the ECU has the related misfire DTC(s) stored and verify that the vehicle is within the specified production date range listed in the table on page 1.

[Refer to the flowchart instruction below:](#)



**Note:** A [Vehicle Diagnosis Number \(VDN\)](#) must be created for DTC's P030000, P030100, P030200, P030300, and/or P030400 prior to ordering parts and performing necessary procedure(s), as outlined in this TSB. If a VDN is not created, Parts Ordering and Warranty claim submission issues WILL occur. Any claims for replacement parts are subject to Warranty review and chargeback.

# SUBJECT: GDI FUEL INJECTOR REPLACEMENT FOR MISFIRE DTC(S) THETA III 2.5L GDI

## Repair Procedure:

- Confirmed DTC(s) stored, and vehicle is within the production date range on page 1.

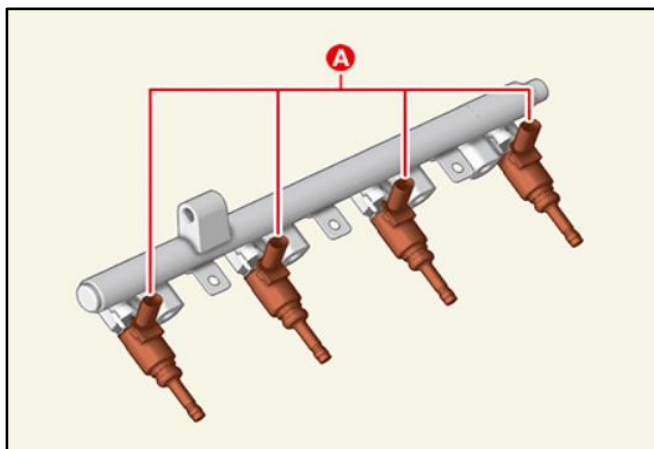
### DTCs:

- **P030000 - Random/Multiple Cylinder Misfire Detected**
- **P030100 - Cylinder 1 Misfire Detected**
- **P030200 - Cylinder 2 Misfire Detected**
- **P030300 - Cylinder 3 Misfire Detected**
- **P030400 - Cylinder 4 Misfire Detected**

System	DTC	Description	State
ENGINE	P030100	Cylinder 1-Misfire detected	Active
ENGINE	P030300	Cylinder 3-Misfire detected	Active
ENGINE	P030200	Cylinder 2-Misfire detected	Active
ENGINE	P030000	Random/Multiple Cylinder Misfire Detected	Active

- Replace the fuel injectors, delivery pipe and related parts by referring to the "Engine Control / Fuel System → Fuel Delivery System → Delivery Pipe → Removal and Installation" instructions in the applicable Shop Manual on KGIS.

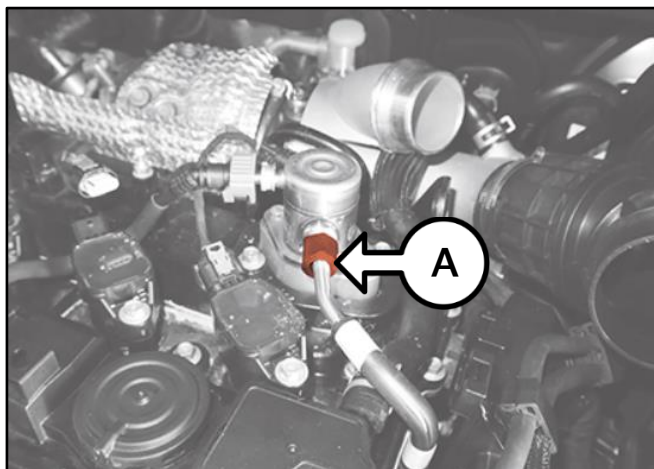
**Note:** SST 09353 L1100 is required.



- Note:** Refer to GDI Injector installation instruction on KGIS and install the new clips. Replace the gaskets for the throttle body and intake manifold as they are not reusable.



Tightening torque for pipe flange nut (A):  
23.9 - 26 lb.ft (32.4 - 35.3 N.m)




- Reinstall all removed parts in reverse order of removal.
- Using KDS, clear DTC(s).
- Confirm normal vehicle operation.

## SUBJECT: GDI FUEL INJECTOR REPLACEMENT FOR MISFIRE DTC(S) THETA III 2.5L GDI


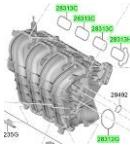
## AFFECTED VEHICLE RANGE:

Model	Production Date Range
Sorento (MQ4a)	July 1, 2021 to June 10, 2022
Sportage (NQ5)	December 15, 2021 to January 13, 2023
Sportage (NQ5a)	January 12, 2022 to June 10, 2022

## REQUIRED TOOL:

Tool Name	Part Number	Figure	Comments
Injector Combustion Seal Guide & Sizing Tool	09353 L1100		Located in Toolbox 1 Drawer 7

## REQUIRED PART:

Part Name	Part Number	Figure	Qty.	Comments
GDI Fuel Injector <u>and</u> Line Service Kit	35399 2S033FFF		1	<b>Note:</b> Dealers <u>MUST</u> Order the Kit PN: <b>35399 2S033FFF</b>
• GDI Fuel Injectors	35310 2S000		4	
• Fuel Injector Clips	35309 04AA0		4	
• High Pressure Pipe	35305 2S000		1	
Intake Port Gasket	28411 2S010FFF		3	Not Reusable
Intake Port Gasket	28411 2S020FFF		1	
Throttle Body Gasket	28411 2S000FFF		1	
EGR Pipe Gasket	28493 2S000FFF	N/A	1	NQ5, NQ5a <u>only</u>
Oil Filter Housing Gasket	26333 2S000		2	
Coolant	UM020 CH263		3 gallons	
Synthetic Oil	T0530 QRT12A or UM050 CH035		1qt	5W30

**Note:** The replacement FFF part numbers will require a VIN entry for parts ordering. DO NOT order these parts for stocking purposes, related to this TSB. Supply is very limited. Until supply stabilizes, please confirm part availability before scheduling customers. Please be sure to expedite warranty claim filing.

## SUBJECT: GDI FUEL INJECTOR REPLACEMENT FOR MISFIRE DTC(S) THETA III 2.5L GDI

## WARRANTY INFORMATION:

N Code: N99 C Code: C99

Model	Claim Type	Causal P/N	Qty.	Repair Description	Labor Op Code	Op Time	Replacement P/N	Qty.
MQ4a	V	35310 2S000	0	DTC Inspection + GDI Fuel Injector Replacement	250A07R0	1.7 M/H	35399 2S033FFF	1
							28411 2S010FFF	3
							28411 2S020FFF	1
							28411 2S000FFF	1
							28493 2S000FFF	1
							T0530 QRT12A or UM050 CH035	1
NQ5					250035R1	1.6 M/H	35399 2S033FFF	1
							28411 2S010FFF	3
							28411 2S020FFF	1
							28411 2S000FFF	1
							28493 2S000FFF	1
							26333 2S000	2
							UM020 CH263	3
							T0530 QRT12A or UM050 CH035	1
NQ5a	250A07R1	1.6 M/H	35399 2S033FFF	1				
			28411 2S010FFF	3				
			28411 2S020FFF	1				
			28411 2S000FFF	1				
			28493 2S000FFF	1				
			26333 2S000	2				
			UM020 CH263	3				
			T0530 QRT12A or UM050 CH035	1				

**Note:** ALL six (6) **Replacement PNs** listed in the table above are required for Sportage (NQ5, NQ5a) model applications.

**Note:** For Substitute Transportation policy, please refer to Service Policy and Procedures Manual (SPPM) 6.11 "Kia Substitute Transportation".

**Note:** A **Vehicle Diagnosis Number (VDN)** must be created for DTC's P030000, P030100, P030200, P030300, and/or P030400 prior to ordering parts and performing necessary procedure(s), as outlined in this TSB. If a VDN is not created, Parts Ordering and Warranty claim submission issues WILL occur. Any claims for replacement parts are subject to Warranty review and chargeback.

