

Subject: **TS45 Emergency Exit Control**

Bulletin type: **RECALL**

Bulletin Number: **TS45-SR-2503**

PQR Number: -

Rev Nu: **00**

Ref. Number: **700004740**

Vehicle Model: **TS45**

Labor time: **45 Minute (for 1 vehicle)**

Release date: **28.05.2025**

Expiration Of Validity : **28.05.2026**

What to do with off coming parts:

- Scrap
- Return
- Use with additional parts
- On consignment
- No off coming parts

What to do with outstanding parts of previous revision:

- Scrap
- Return
- Use with additional parts
- On consignment
- No off coming parts

Description of the modification:

This Service Bulletin includes the control method and instructions to be applied in all relevant vehicles in the field, regarding the problem of knob breakage in the emergency exits used in TS45 vehicles.

Liabile: ARZU GEZMEN

Confirmation & Release: CEMRE KILINÇ

SAFETY INSTRUCTIONS

1. Mechanical Requested Dress Code

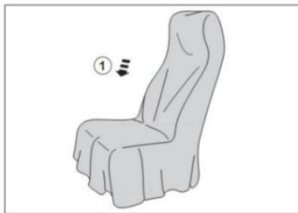


WARNING:

- Dress properly to avoid personal injury and damage to the vehicle

- ✓ Always wear protective clothing
- ✓ Do not wear any worn or loose-fitting clothing
- ✓ Remove jewelry before starting to work
- ✓ In case of long hair, use hairnet
- ✓ The illustration on the left shows some of the correct and incorrect clothing
- ✓ Sharp edged items should be avoided in order not to scratch vehicle (i.e. belts, watches, necklace)

2. Protect Seats when Mechanic Starts Working



- ✓ Seats, trimming, upholstery stuff and carpeting should be protected with appropriate coverings.

3. Welding on the Chassis

- Always disconnect the batteries (starting with the negative lead).
- Disconnect the connectors of electrical and electronic equipment (electronic control units, sensors and actuators) if they are less than 2 meters away from the chassis part to be welded or the earth terminal of the welding equipment.
- The earth terminal should never be attached to vehicle components such as engine, axles and springs. Arcing on these parts is not permitted, because of the risk of damage to bearings, springs, etc.
- The earth terminal must make good contact and be placed as close as possible to the part to be welded.
- Plastic pipes, rubber parts and parabolic springs should be well protected against welding spatter and temperatures higher than 70°.
- The contact switch must not be in the accessory or contact position. The contact key should be removed.
- Reconnect in reversed order of disconnecting. Ensure that a good earth connection is made between chassis, engine and cab.

PARTS LIST

Released Piece: -

Output Parts: -

Input Parts: -

****This Service Bulletin includes the control method and instructions to be applied in all relevant vehicles in the field, regarding the problem of knob breakage in the emergency exits used in TS45 vehicles.**

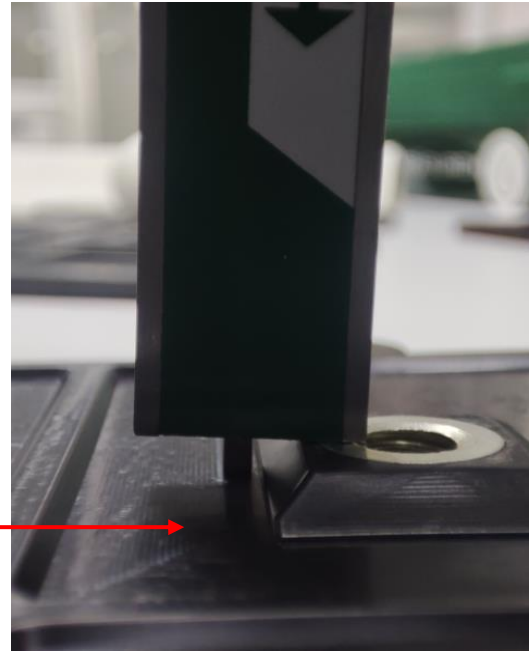
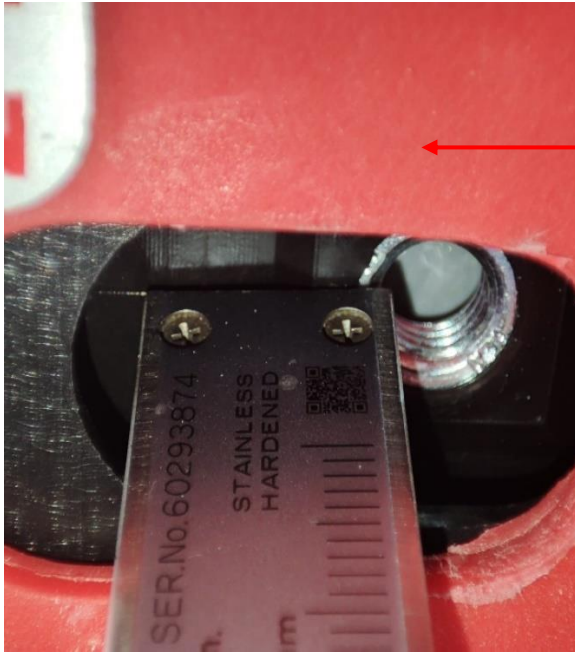
CONTROL METHOD!!!

****Remove the white knob piece on the emergency exit.**

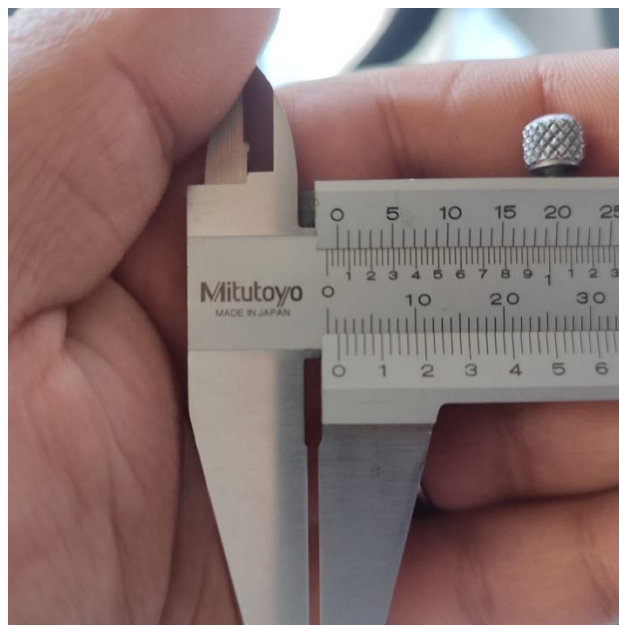
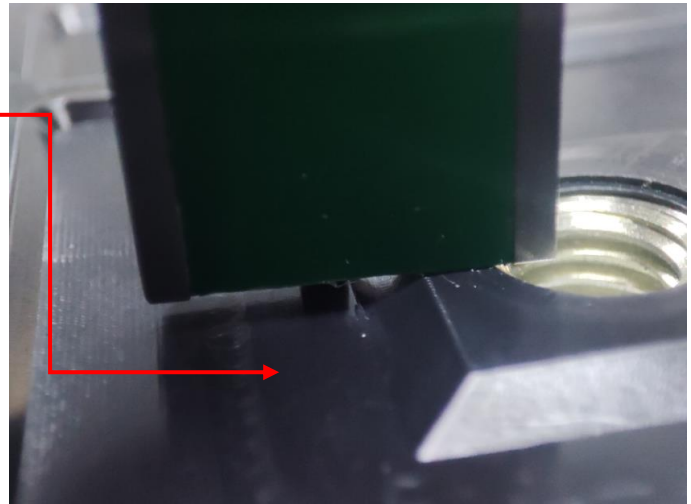
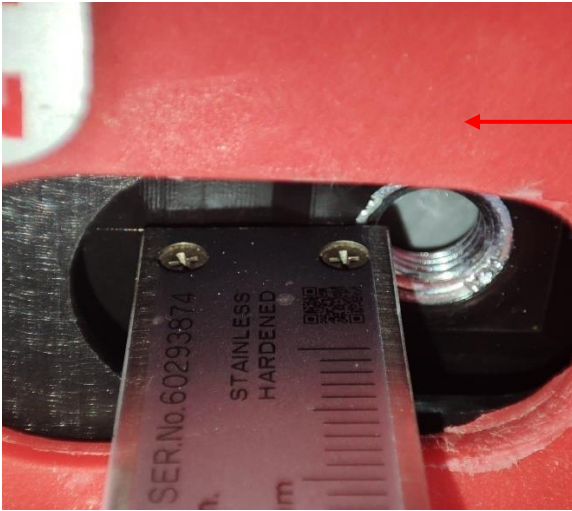
To check that the piece is mounted on the appropriate surface, measure the step difference indicated in the image with a caliper.



- 1) If the step difference between the two surfaces indicated in the image below is 3 mm, it means that the lock mechanism is mounted on the appropriate surface.



2) If the step difference between the two surfaces indicated in the image below is 1,5 mm, it means that the lock mechanism is mounted on the wrong surface.

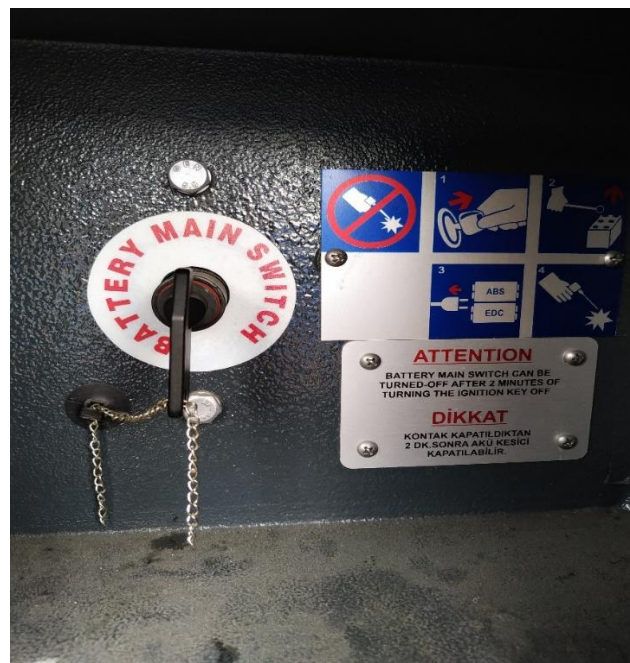


****As mentioned in number 2, if the knob part is mounted to the wrong surface, follow the instructions below.**

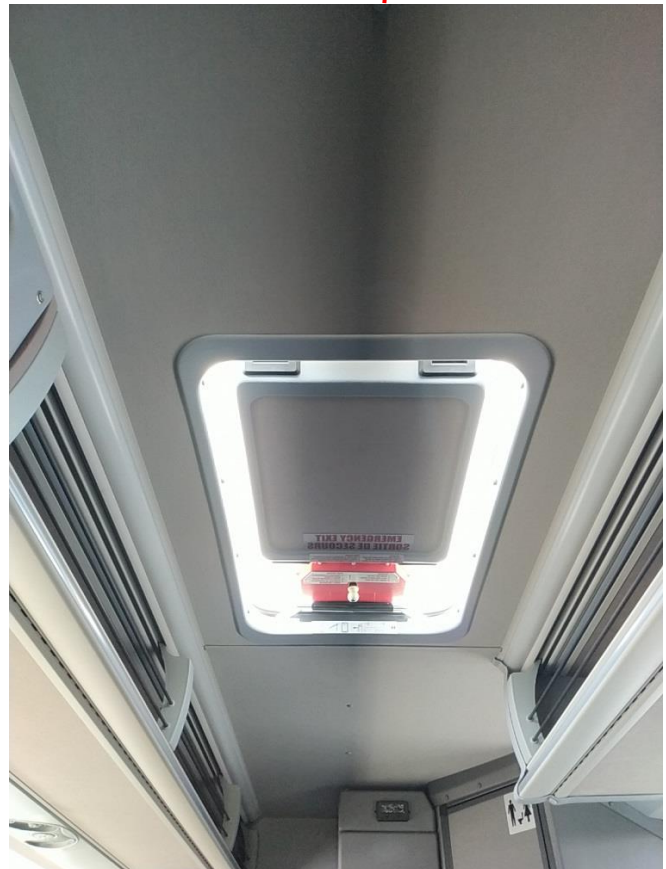
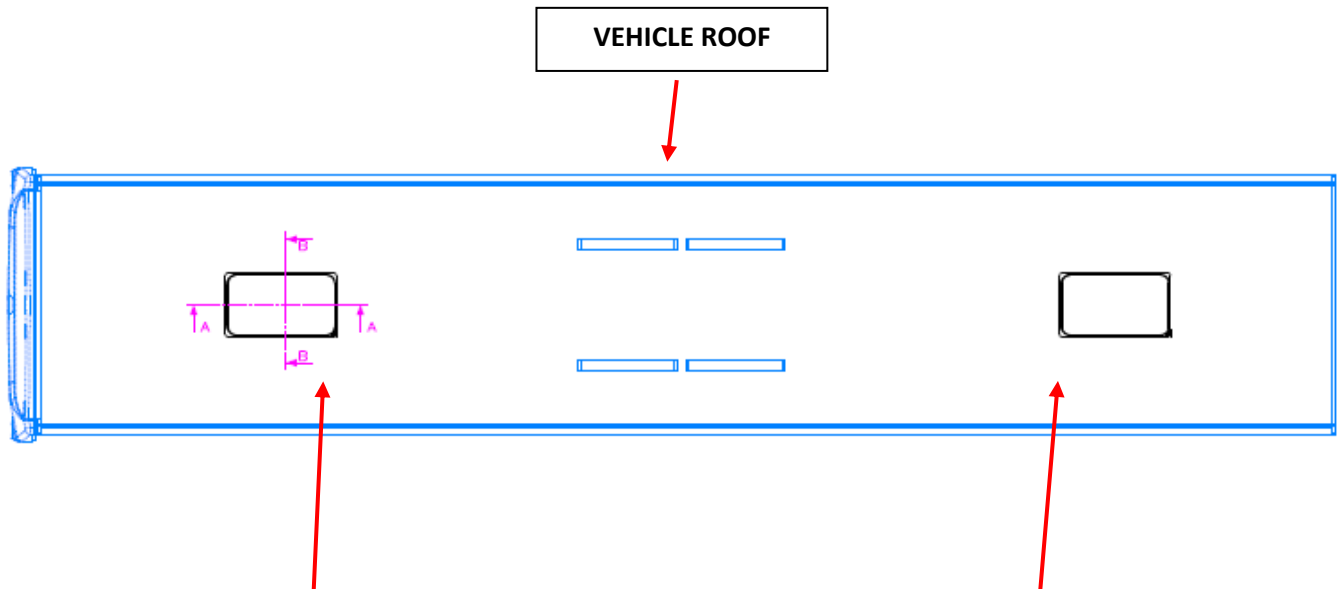
TECHNICAL INSTRUCTIONS

1-Follow the instructions below;

- a) Take the vehicle for service and turn off the engine.
- b) Make sure you turn off the vehicle's breaker before starting the process.



2- There are 2 emergency exit mechanisms on the roof of the vehicle. Apply the replacement procedures for both parts.



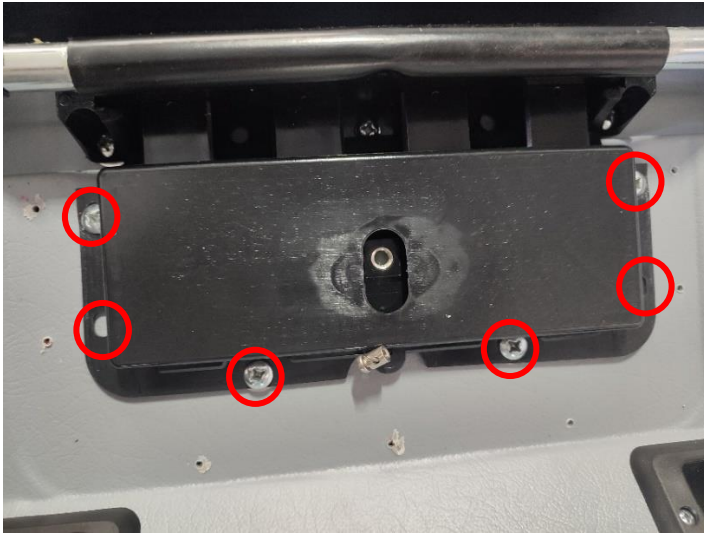
3- Remove a total of 7 screws on the cover with a number 2 Phillips head drill.



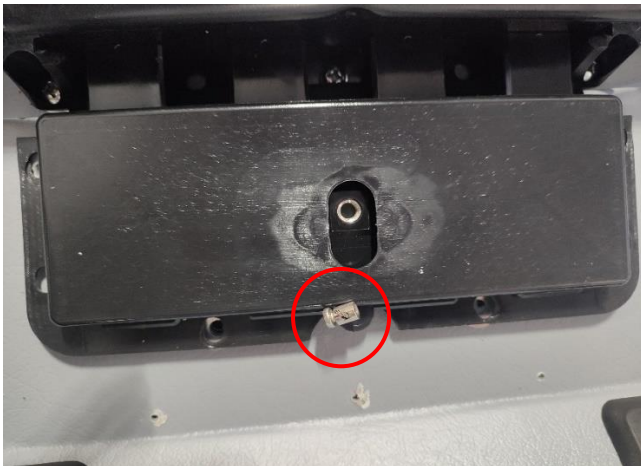
4- After removing the screws, remove the cover.



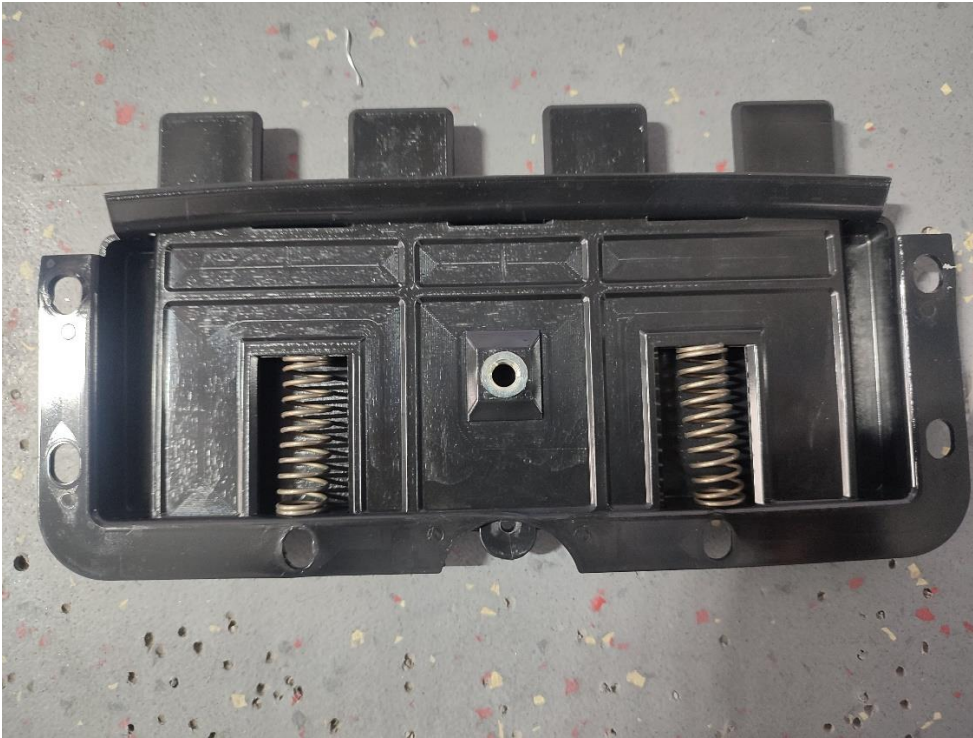
5- Remove the bolts in the marked area on the lock mechanism using the same charged screwdriver.



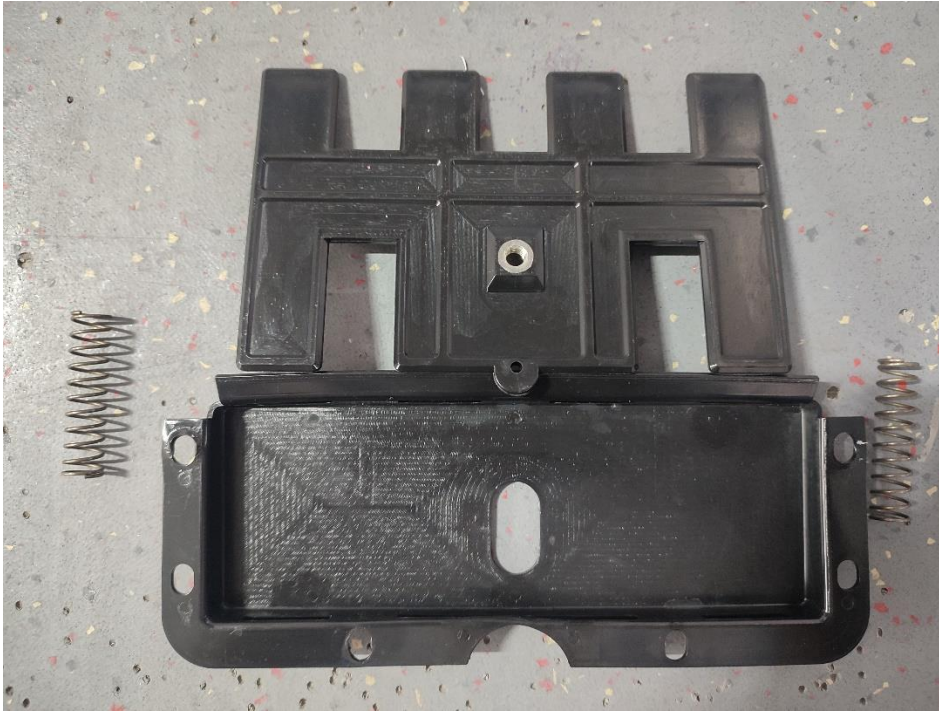
6- The nut on the rope is removed and the wire is removed from the mechanism.



7- Turn the mechanism over and remove the springs.



8- Turn the part to the appropriate surface and perform the assembly steps in the reverse direction of the disassembly process.



****Follow the assembly instructions in reverse order of the disassembly instructions.**

HAND TOOLS USED

- 1) Cordless Screwdriver**



- 2) (Number 2) Star Bit**



- 3) Side Chisel**



AFFECTED VEHICLES LIST

NUMBER	CHASSIS LIST	COUNTRY
1	NLTEJXA94P1000349	USA
2	NLTEJXA92P1000351	USA
3	NLTEJXA94P1000352	USA
4	NLTEJXA96P1000353	USA
5	NLTEJXA98P1000354	USA
6	NLTEJXA9XP1000355	USA
7	NLTEJXA91P1000356	USA
8	NLTEJXA93P1000357	USA
9	NLTEJXA95P1000358	USA
10	NLTEJXA97P1000359	USA
11	NLTEJXA93P1000360	USA
12	NLTEJXA95P1000361	USA
13	NLTEJXA97P1000362	USA
14	NLTEJXA99P1000363	USA
15	NLTEJXA90P1000364	USA
16	NLTEJXA92P1000365	USA
17	NLTEJXA94P1000366	USA
18	NLTEJXA96P1000367	USA
19	NLTEJXA98P1000368	USA
20	NLTEJXA9XP1000369	USA
21	NLTEJXA96P1000370	USA
22	NLTEJXA98P1000371	USA
23	NLTEJXA9XP1000372	USA
24	NLTEJXA91P1000373	USA
25	NLTEJXA93P1000374	USA
26	NLTEJXA95P1000375	USA
27	NLTEJXA97P1000376	USA
28	NLTEJXA99P1000377	USA
29	NLTEJXA90P1000378	USA
30	NLTEJXA92P1000379	USA
31	NLTEJXA99P1000380	USA
32	NLTEJXA90P1000381	USA
33	NLTEJXA92P1000382	USA
34	NLTEJXA94P1000383	USA
35	NLTEJXA96P1000384	USA
36	NLTEJXA98P1000385	USA
37	NLTEJXA9XP1000386	USA
38	NLTEJXA91P1000387	USA
39	NLTEJXA93P1000388	USA
40	NLTEJXA95P1000389	USA

NUMBER	CHASSIS LIST	COUNTRY
41	NLTEJXA91P1000390	USA
42	NLTEJXA93P1000391	USA
43	NLTEJXA95P1000392	USA
44	NLTEJXA97P1000393	USA
45	NLTEJXA91P1000423	USA
46	NLTEJXA99P1000394	USA
47	NLTEJXA90P1000395	USA
48	NLTEJXA92P1000396	USA
49	NLTEJXA94P1000397	USA
50	NLTEJXA96P1000398	USA
51	NLTEJXA98P1000399	USA
52	NLTEJXA90P1000400	USA
53	NLTEJXA92P1000401	USA
54	NLTEJXA94P1000402	USA
55	NLTEJXA94P1000433	USA
56	NLTEJXA96P1000434	USA
57	NLTEJXA96P1000403	USA
58	NLTEJXA98P1000404	USA
59	NLTEJXA9XP1000405	USA
60	NLTEJXA91P1000406	USA
61	NLTEJXA93P1000407	USA
62	NLTEJXA95P1000408	USA
63	NLTEJXA97P1000409	USA
64	NLTEJXA93P1000410	USA
65	NLTEJXZZ9S1000005	USA
66	NLTEJXA95P1000411	USA
67	NLTEJXA97P1000412	USA
68	NLTEJXA99P1000413	USA
69	NLTEJXA90P1000414	USA
70	NLTEJXA92P1000415	USA
71	NLTEJXA94P1000416	USA
72	NLTEJXA96P1000417	USA
73	NLTEJXA94R1000418	USA
74	NLTEJXA96R1000419	USA
75	NLTEJXA92R1000420	USA
76	NLTEJXA94R1000421	USA
77	NLTEJXA96R1000422	USA
78	NLTEJXZZ0S1000006	USA
79	NLTEJXA9XR1000424	USA
80	NLTEJXA91R1000425	USA

NUMBER	CHASSIS LIST	COUNTRY
81	NLTEJXA93R1000426	USA
82	NLTEJXA95R1000427	USA
83	NLTEJXA97R1000428	USA
84	NLTEJXA99R1000429	USA
85	NLTEJXA95R1000430	USA
86	NLTEJXA97R1000431	USA
87	NLTEJXA99R1000432	USA
88	NLTEJXZZXS1000014	USA
89	NLTEJXZZ2S1000007	USA
90	NLTEJXZZ4S1000008	USA
91	NLTEJXZZ6S1000009	USA
92	NLTEJXZZ2S1000010	USA
93	NLTEJXZZ4S1000011	USA
94	NLTEJXZZ6S1000012	USA
95	NLTEJXA94R1000435	USA
96	NLTEJXA96R1000436	USA
97	NLTEJXA98R1000437	USA
98	NLTEJXA9XR1000438	USA
99	NLTEJXA91R1000439	USA
100	NLTEJXA98R1000440	USA
101	NLTEJXA9XR1000441	USA
102	NLTEJXA91R1000442	USA
103	NLTEJXA93R1000443	USA
104	NLTEJXA95R1000444	USA
105	NLTEJXA97R1000445	USA
106	NLTEJXA99R1000446	USA
107	NLTEJXA90R1000447	USA
108	NLTEJXA92R1000448	USA
109	NLTEJXA94R1000449	USA
110	NLTEJXA90R1000450	USA
111	NLTEJXA92R1000451	USA
112	NLTEJXA94R1000452	USA
113	NLTEJXA96R1000453	USA
114	NLTEJXA98R1000454	USA
115	NLTEJXA9XR1000455	USA
116	NLTEJXA91R1000456	USA
117	NLTEJXA97R1000459	USA
118	NLTEJXA93R1000460	USA
119	NLTEJXA95R1000461	USA
120	NLTEJXA97R1000462	USA

NUMBER	CHASSIS LIST	COUNTRY
121	NLTEJXA99R1000463	USA
122	NLTEJXA90R1000464	USA
123	NLTEJXA92R1000465	USA
124	NLTEJXA94R1000466	USA
125	NLTEJXA96R1000467	USA
126	NLTEJXA98R1000468	USA
127	NLTEJXA9XR1000469	USA
128	NLTEJXA96R1000470	USA
129	NLTEJXA98R1000471	USA
130	NLTEJXA9XR1000472	USA
131	NLTEJXA91R1000473	USA
132	NLTEJXA93R1000474	USA
133	NLTEJXA95R1000475	USA
134	NLTEJXA97R1000476	USA
135	NLTEJXA99R1000477	USA
136	NLTEJXA90R1000478	USA
137	NLTEJXA92R1000479	USA
138	NLTEJXA99R1000480	USA
139	NLTEJXA90R1000481	USA
140	NLTEJXA92R1000482	USA
141	NLTEJXA94R1000483	USA
142	NLTEJXA96R1000484	USA
143	NLTEJXA98R1000485	USA
144	NLTEJXA9XR1000486	USA
145	NLTEJXA91R1000487	USA
146	NLTEJXA93R1000488	USA
147	NLTEJXA95R1000489	USA
148	NLTEJXA91R1000490	USA
149	NLTEJXA93R1000491	USA
150	NLTEJXA95R1000492	USA
151	NLTEJXA97R1000493	USA
152	NLTEJXA99R1000494	USA
153	NLTEJXA90R1000495	USA
154	NLTEJXA92R1000496	USA
155	NLTEJXA94R1000497	USA
156	NLTEJXA96R1000498	USA
157	NLTEJXA98R1000499	USA
158	NLTEJXA90R1000500	USA
159	NLTEJXA92R1000501	USA
160	NLTEJXA94R1000502	USA

NUMBER	CHASSIS LIST	COUNTRY
161	NLTEJXA96R1000503	USA
162	NLTEJXA98R1000504	USA
163	NLTEJXA9XR1000505	USA
164	NLTEJXA91R1000506	USA
165	NLTEJXA93R1000507	USA
166	NLTEJXA95R1000508	USA
167	NLTEJXA97R1000509	USA
168	NLTEJXA93R1000510	USA
169	NLTEJXA95R1000511	USA
170	NLTEJXA97R1000512	USA
171	NLTEJXA99R1000513	USA
172	NLTEJXA90R1000514	USA
173	NLTEJXA92R1000515	USA
174	NLTEJXA94R1000516	USA
175	NLTEJXA96R1000517	USA
176	NLTEJXA98R1000518	USA
177	NLTEJXA9XR1000519	USA
178	NLTEJXA96R1000520	USA
179	NLTEJXA98R1000521	USA
180	NLTEJXA9XR1000522	USA
181	NLTEJXA91R1000523	USA
182	NLTEJXA93R1000524	USA
183	NLTEJXA95R1000525	USA
184	NLTEJXA97R1000526	USA
185	NLTEJXA99R1000527	USA
186	NLTEJXA90R1000528	USA
187	NLTEJXA92R1000529	USA
188	NLTEJXA99R1000530	USA
189	NLTEJXA90R1000531	USA
190	NLTEJXA92R1000532	USA
191	NLTEJXA94R1000533	USA
192	NLTEJXA96R1000534	USA
193	NLTEJXA98R1000535	USA
194	NLTEJXA9XR1000536	USA
195	NLTEJXA91R1000537	USA
196	NLTEJXA93R1000538	USA
197	NLTEJXA95R1000539	USA
198	NLTEJXA90P1000350	CANADA
199	NLTEJXA93R1000457	CANADA
200	NLTEJXA95R1000458	CANADA

LABOR TIME

Application	Time
Preparation of the vehicle and tools to be used	5'
Labor spent time per part	20' (*2)
Total labor time for 1 vehicle	45 minute