

Subject: **TS35 Emergency Exit Control** Bulletin type: **RECALL**

Bulletin Number: **TS35-SR-2502** PQR Number: -

Rev Nu: **00** Ref. Number: **700004745**

Vehicle Model: **TS35** Labor time: **25 Minute (for 1 vehicle)**

Release date: **29.05.2025** Expiration Of Validity : **29.05.2026**

What to do with off coming parts:

- Scrap
- Return
- Use with additional parts
- On consignment
- No off coming parts

What to do with outstanding parts of previous revision:

- Scrap
 - Return
 - Use with additional parts
 - On consignment
 - No off coming parts
-

Description of the modification:

This Service Bulletin includes the control method and instructions to be applied in all relevant vehicles in the field, regarding the problem of knob breakage in the emergency exits used in TS35 vehicles.

Liabile: ARZU GEZMEN

Confirmation & Release: CEMRE KILINÇ

SAFETY INSTRUCTIONS

1. Mechanical Requested Dress Code

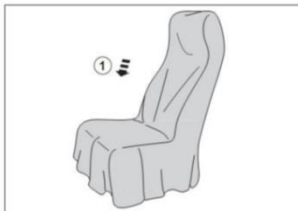


WARNING:

- Dress properly to avoid personal injury and damage to the vehicle

- ✓ Always wear protective clothing
- ✓ Do not wear any worn or loose-fitting clothing
- ✓ Remove jewelry before starting to work
- ✓ In case of long hair, use hairnet
- ✓ The illustration on the left shows some of the correct and incorrect clothing
- ✓ Sharp edged items should be avoided in order not to scratch vehicle (i.e. belts, watches, necklace)

2. Protect Seats when Mechanic Starts Working



- ✓ Seats, trimming, upholstery stuff and carpeting should be protected with appropriate coverings.

3. Welding on the Chassis

- a. Always disconnect the batteries (starting with the negative lead).
- b. Disconnect the connectors of electrical and electronic equipment (electronic control units, sensors and actuators) if they are less than 2 meters away from the chassis part to be welded or the earth terminal of the welding equipment.
- c. The earth terminal should never be attached to vehicle components such as engine, axles and springs. Arcing on these parts is not permitted, because of the risk of damage to bearings, springs, etc.
- d. The earth terminal must make good contact and be placed as close as possible to the part to be welded.
- e. Plastic pipes, rubber parts and parabolic springs should be well protected against welding spatter and temperatures higher than 70°.
- f. The contact switch must not be in the accessory or contact position. The contact key should be removed.
- g. Reconnect in reversed order of disconnecting. Ensure that a good earth connection is made between chassis, engine and cab.

PARTS LIST

Released Piece: -

Output Parts: -

Input Parts: -

****This Service Bulletin includes the control method and instructions to be applied in all relevant vehicles in the field, regarding the problem of knob breakage in the emergency exits used in TS35 vehicles.**

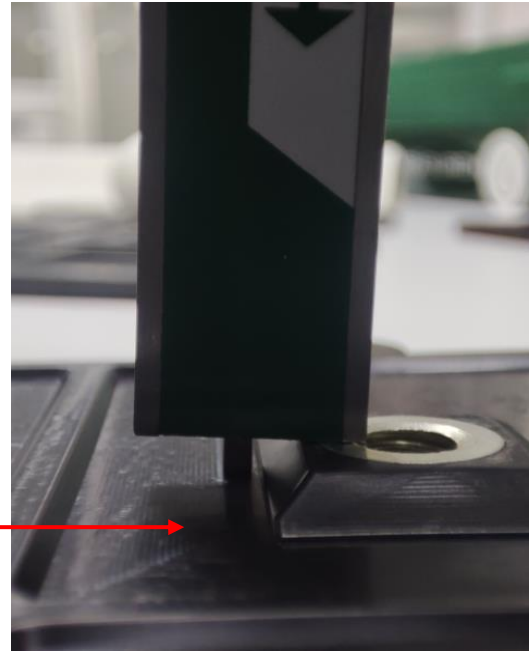
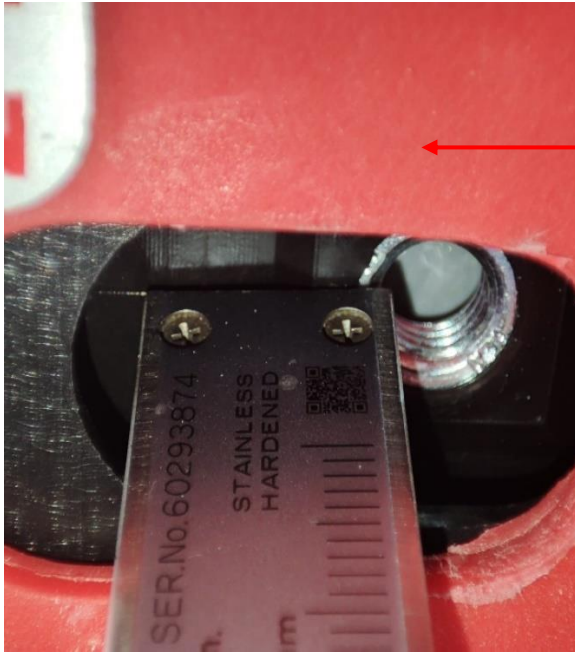
CONTROL METHOD!!!

****Remove the white knob piece on the emergency exit.**

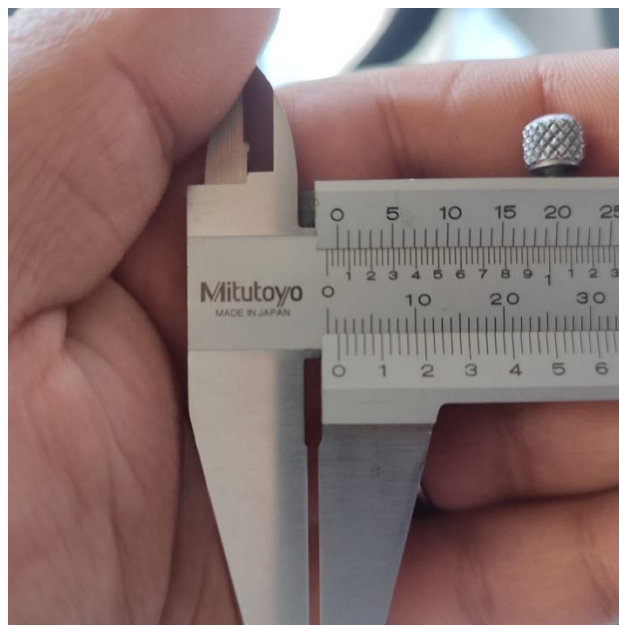
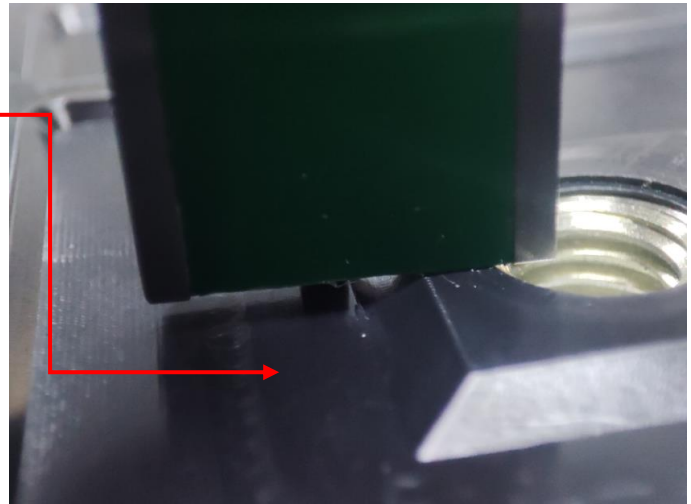
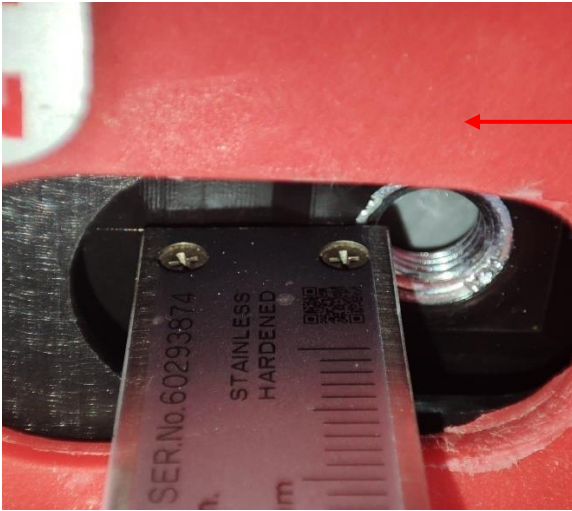
To check that the piece is mounted on the appropriate surface, measure the step difference indicated in the image with a caliper.



- 1) If the step difference between the two surfaces indicated in the image below is 3 mm, it means that the lock mechanism is mounted on the appropriate surface.



2) If the step difference between the two surfaces indicated in the image below is 1,5 mm, it means that the lock mechanism is mounted on the wrong surface.

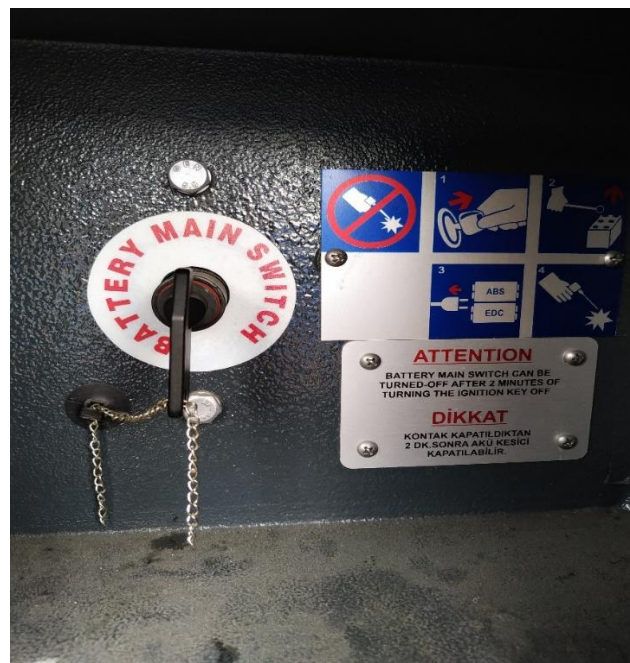


****As mentioned in number 2, if the knob part is mounted to the wrong surface, follow the instructions below.**

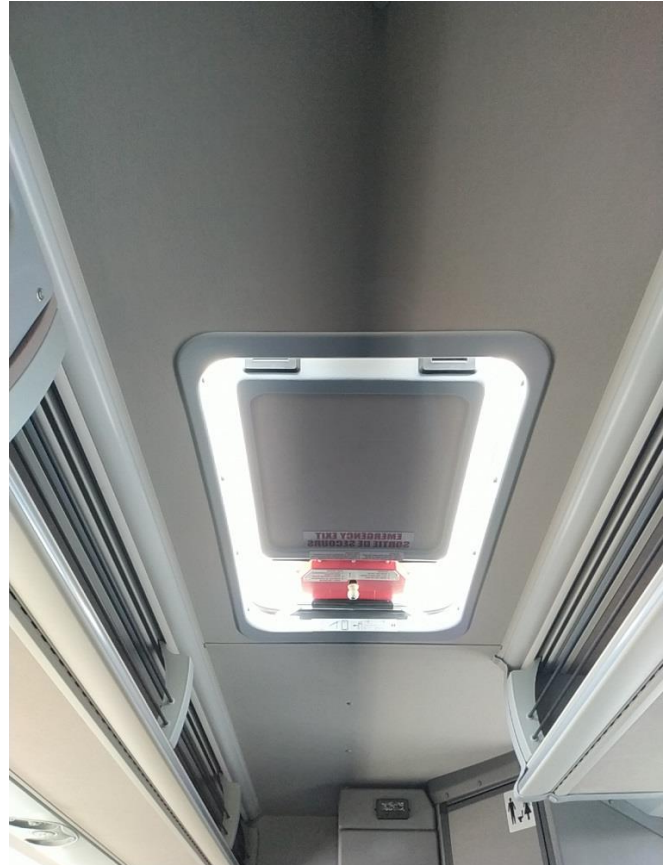
TECHNICAL INSTRUCTIONS

1-Follow the instructions below;

- a) Take the vehicle for service and turn off the engine.
- b) Make sure you turn off the vehicle's breaker before starting the process.



2- There are 1 emergency exit mechanisms on the roof of the TS35 vehicles. Apply the replacement procedures for this parts.



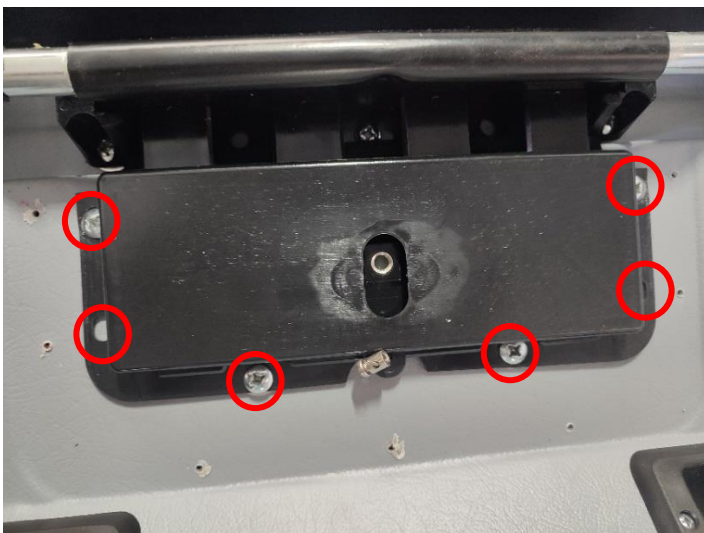
3- Remove a total of 7 screws on the cover with a number 2 Phillips head drill.



4- After removing the screws, remove the cover.



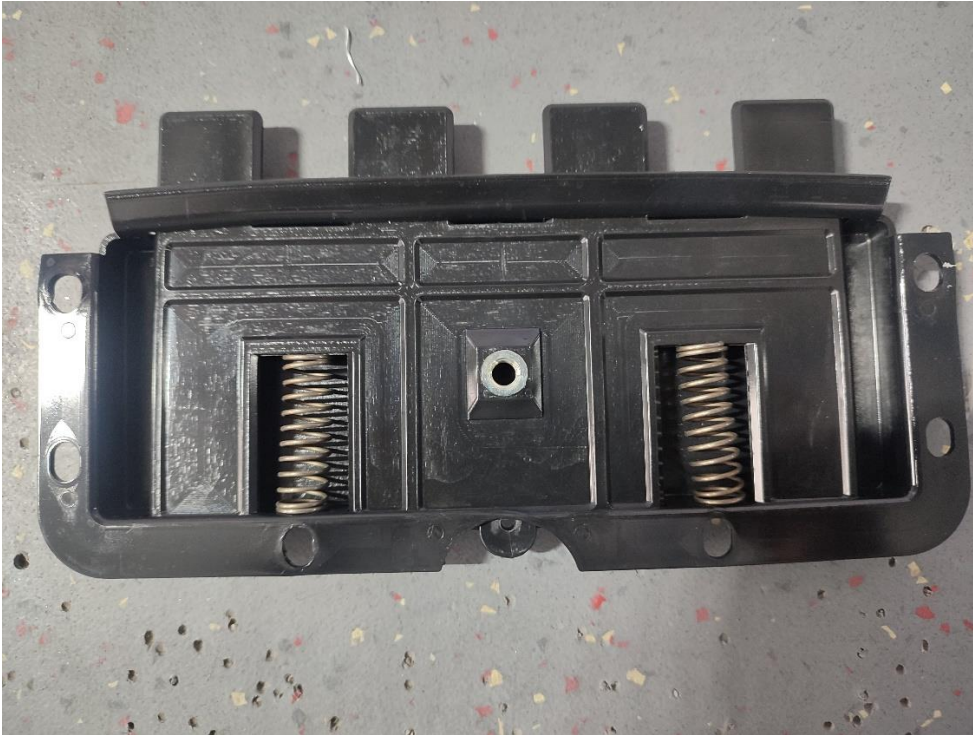
5- Remove the bolts in the marked area on the lock mechanism using the same charged screwdriver.



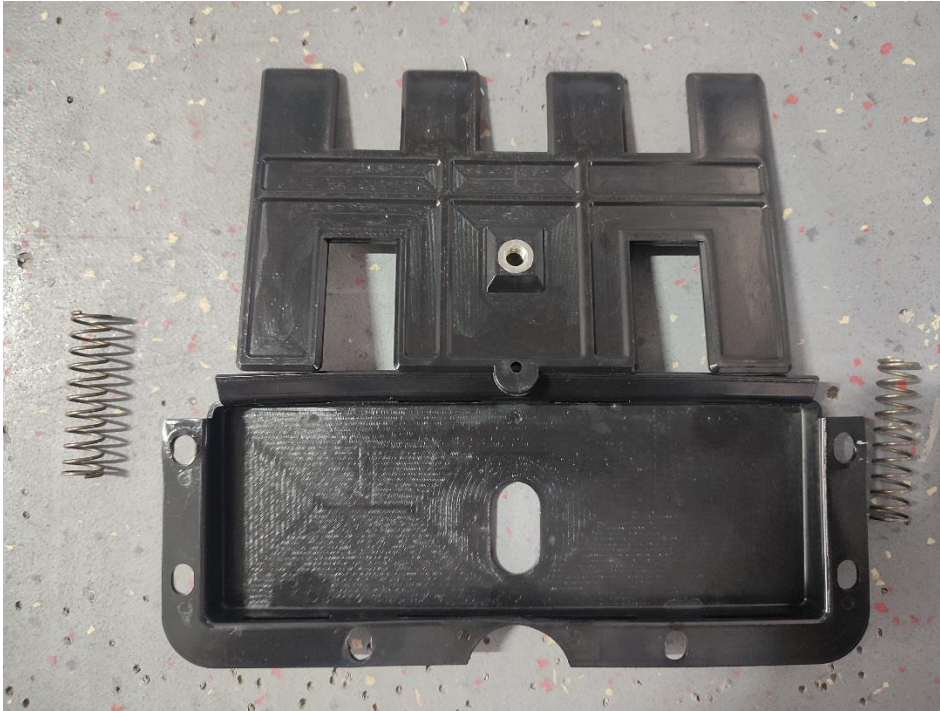
6- The nut on the rope is removed and the wire is removed from the mechanism.



7- Turn the mechanism over and remove the springs.



8- Turn the part to the appropriate surface and perform the assembly steps in the reverse direction of the disassembly process.



****Follow the assembly instructions in reverse order of the disassembly instructions.**

HAND TOOLS USED

- 1) Cordless Screwdriver**



- 2) (Number 2) Star Bit**



- 3) Side Chisel**



AFFECTED VEHICLES LIST

NUMBER	CHASSIS LIST	COUNTRY
1	NLTRPPA72R1000609	USA
2	NLTRPPA79R1000610	USA
3	NLTRPPA79R1000607	USA
4	NLTRPPA70R1000608	USA
5	NLTRPPA70R1000611	USA
6	NLTRPPA72R1000612	USA
7	NLTRPPA74R1000613	USA
8	NLTRPPA76R1000614	USA
9	NLTRPPA78R1000615	USA
10	NLTRPPA7XR1000616	USA
11	NLTRPPA71R1000617	USA
12	NLTRPPA73R1000618	USA
13	NLTRPPA75R1000619	USA
14	NLTRPPA71R1000620	USA
15	NLTRPPA73R1000621	USA
16	NLTRPPA75R1000622	USA
17	NLTRPPA77R1000623	USA
18	NLTRPPA79R1000624	USA
19	NLTRPPA70R1000625	USA
20	NLTRPPA72R1000626	USA
21	NLTRPPA74R1000627	USA
22	NLTRPPA76R1000628	USA
23	NLTRPPA78R1000629	USA
24	NLTRPPA74R1000630	USA
25	NLTRPPA76R1000631	USA
26	NLTRPPA78R1000632	USA
27	NLTRPPA71R1000634	USA
28	NLTRPPA7XR1000633	USA
29	NLTRPPA73R1000635	USA
30	NLTRPPA75R1000636	USA
31	NLTRPPA77R1000637	USA
32	NLTRPPA79R1000638	USA
33	NLTRPPA70R1000639	USA
34	NLTRPPA77R1000640	USA
35	NLTRPPA79R1000641	USA
36	NLTRPPA70R1000642	USA
37	NLTRPPA72R1000643	USA

LABOR TIME

Application	Time
Preparation of the vehicle and tools to be used	5'
Labor spent time per part	20' (*1)
Total labor time for 1 vehicle	25 minute