

SS 1033857 TBB Floor Covering Bubbles

This Service Solution does not imply any special warranty coverage. Standard warranty guidelines and coverage apply. This Service Solution is provided to assist Dealers/Customers in resolving the issue of Floor Bubbling causing a cosmetic concern

Applicable Vehicles

Model years MY23 thru MY26

Issue:

One of our ongoing and historical issues at Thomas has been the bubbling of the floor covering around the seat foot. We have developed a trim piece that will be installed on units that exhibit the issue and want to ensure you are informed of this production solution. Please see the attached photos that show you the application of this two piece. This trim piece will be installed on *all seat feet* on any unit exhibiting the floor bubble issue above 3mm, even if there are only a few "bubbles" on the bus. This will ensure that the entire bus is uniform in the application of the trim piece.

Solution:

Adding a plate per diagram 220325 for standard seats, part number TBB 220614 and screws TBB 189003 if the requirement not drilling thru the flooring, and TBB 69003119 if Drilling is required. .

for units with Freidman seat feet TBB 196028

Note: Cut relief as shown before adding the Plate, see attachment

Component 174-001-064 floor covering

SRT for warranty 174-6224C per complete unit

Labels :

TBB

Add tags

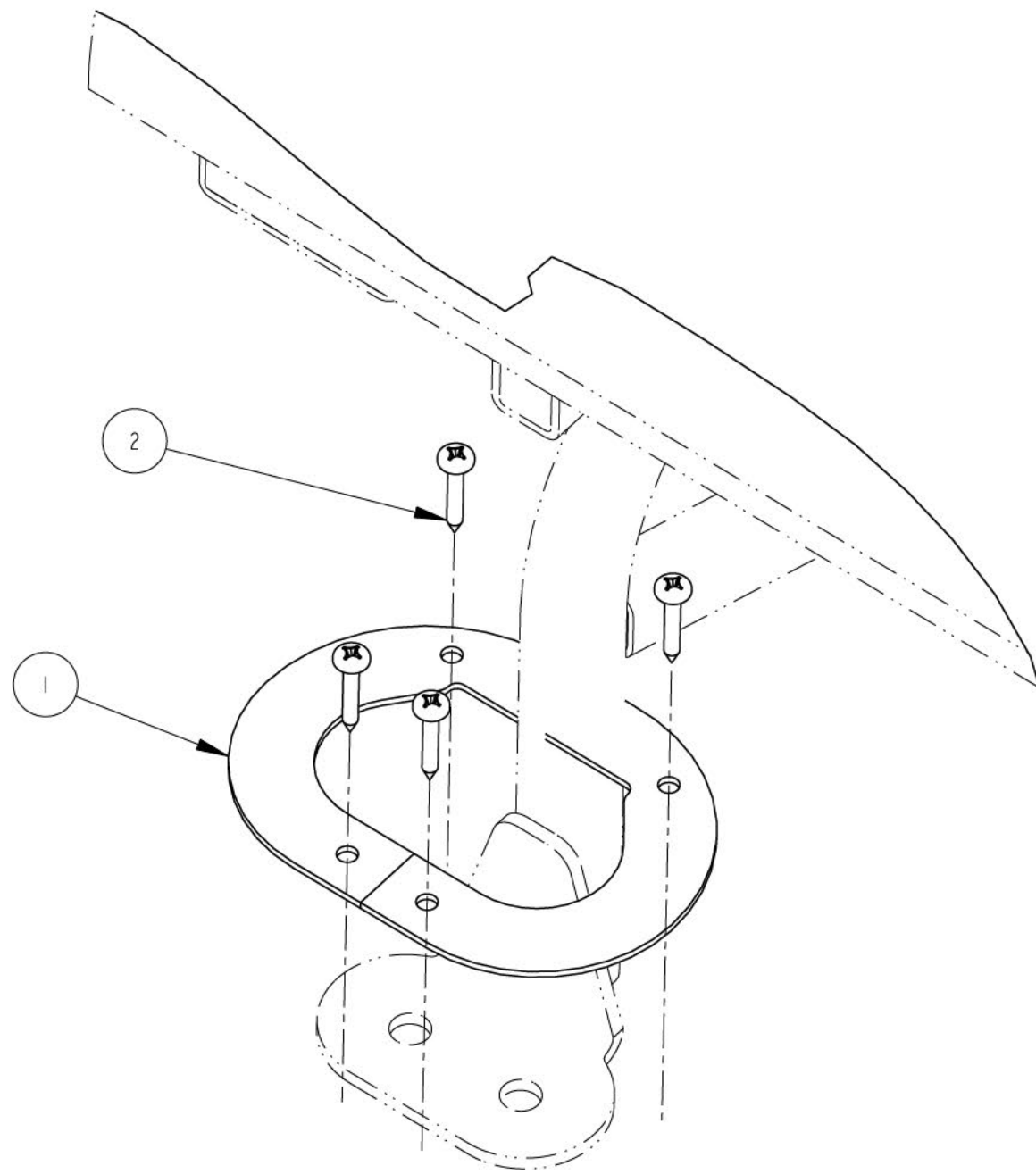
Attachments



3 Kudos

Comment

| ITEM | QUANTITY | PART NUMBER | DESCRIPTION |
|------|----------|-------------|--------------------------------|
| 1 | 2 | 220614 | TRIM PLATE, SEAT FOOT, S3C/S3B |
| 2 | 4 | 69003119 | SCREW, TAPPING NO. 10 |



CUT RELIEF AS SHOWN AND
APPLY ADHESIVE UNDER FLOOR
COVERING BEFORE ADDING PLATE

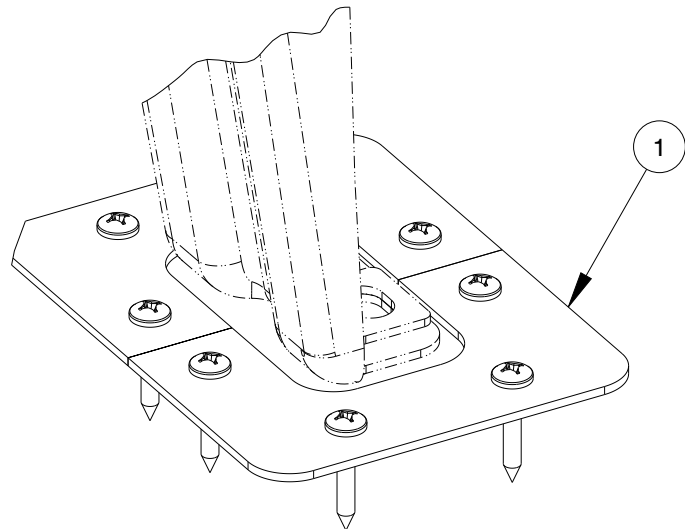
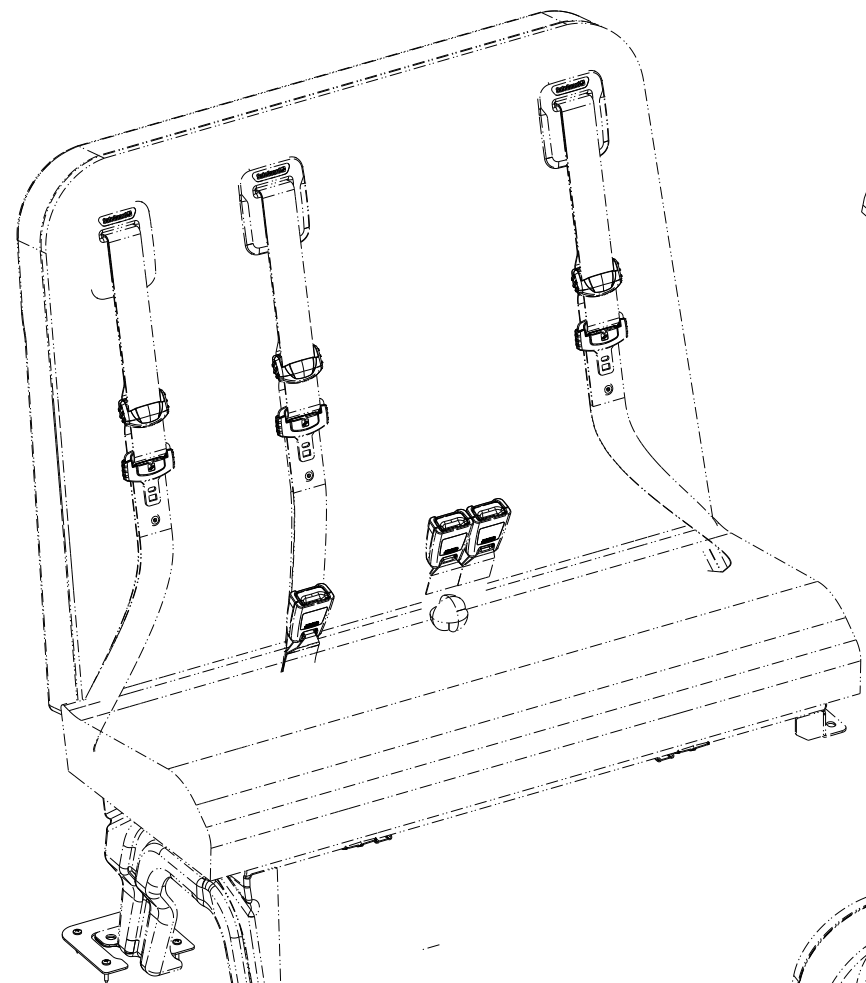


NOTES:

- 1) MATERIAL: PLEASE REFER TO PART DRAWINGS
- 2) CALCULATED WEIGHT: 0.318 LBS
- 3) BURRS: N/A
- 4) FINISH: N/A
- 5) COLOR: N/A
- 6) REFERENCE: DRILL THROUGH STEEL FLOOR WITH #19 DRILL BIT BEFORE ADDING SCREWS
- 7) PART NUMBER IDENTIFICATION: ALL COMPONENTS/ASSEMBLIES BEING PROVIDED TO TBB BY AN OUTSIDE SUPPLIER SHALL HAVE THE TBB PART NUMBER PERMANENTLY IDENTIFIED THROUGH AN ACCEPTABLE MARKING METHOD AS DESCRIBED BY 49-00051.

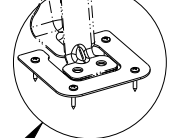
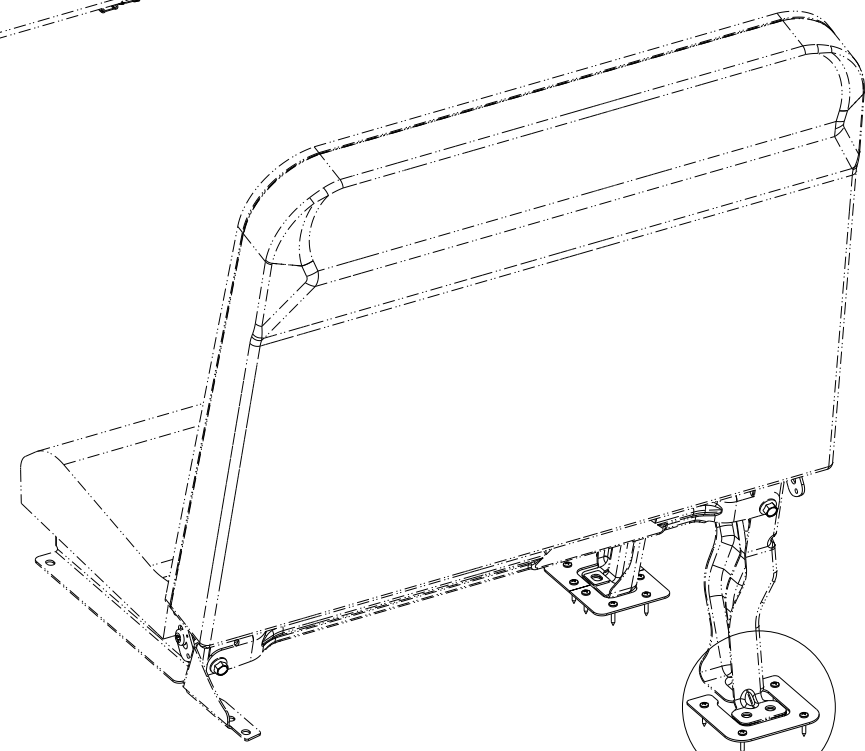
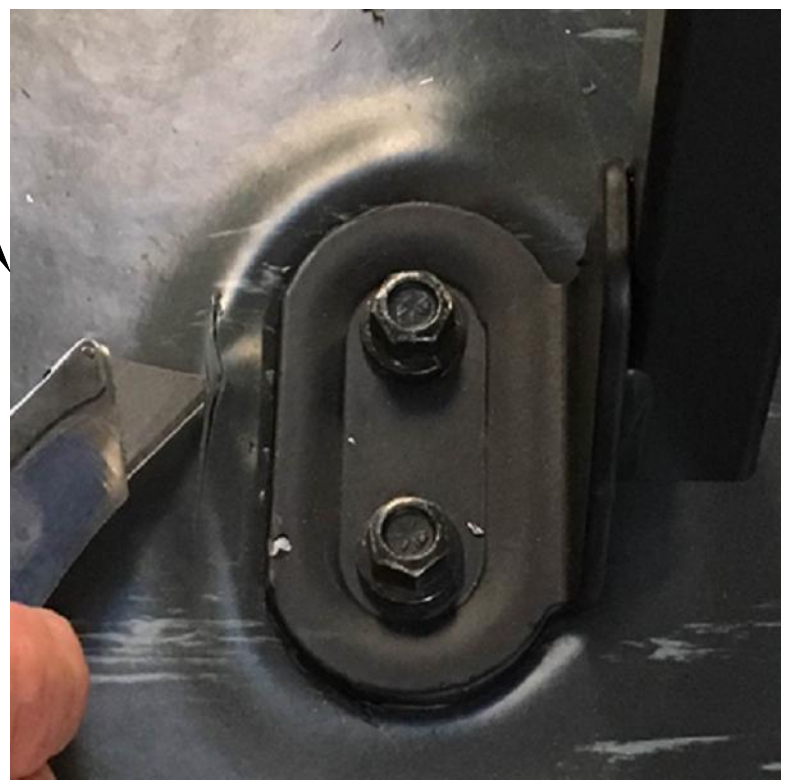
DELIVERY MUST CONFORM EXACTLY WITH DRAWING SPECIFICATIONS AND, WHERE REQUIRED BY Q.A., WITH APPROVED Q.A. SAMPLES. ABSOLUTELY NO CHANGES ARE PERMITTED WITHOUT PRIOR APPROVAL BY THOMAS BUILT BUSES. THIS INCLUDES CHANGES TO: SOFTWARE, MATERIALS, INTERNAL COMPONENTS AND MANUFACTURING PROCESSES.

| ITEM | QUANTITY | PART NUMBER | DESCRIPTION |
|------|----------|-------------|--|
| 1 | 2 | 248470 | SEAT FOOT, COVER PLATE, SABRE, |
| 2 | 12 | 69003119 | SCREW, TAPPING NO. 10 |
| 3 | 1 | 248471 | SEAT FOOT, COVER PLATE, SABRE, WALL SEAT, REAR PED |

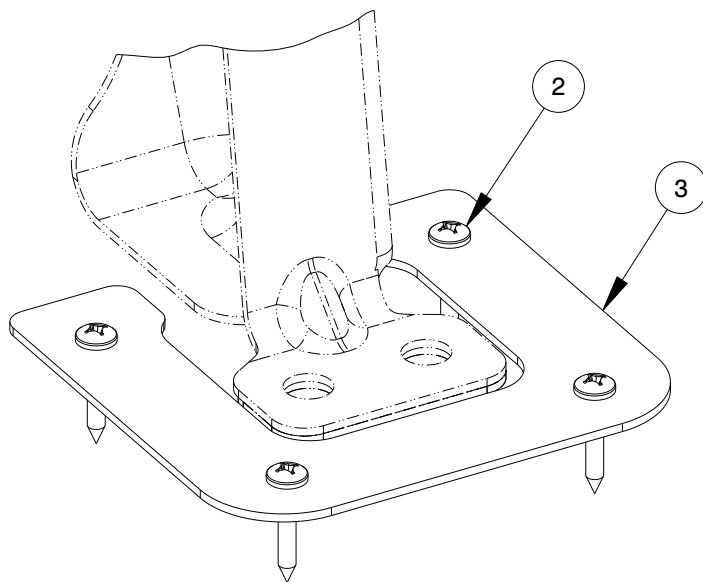


DETAIL A
SCALE 0.500

CUT RELIEF AS SHOWN AND
APPLY ADHESIVE UNDER FLOOR
COVERING BEFORE ADDING PLATE



SEE DETAIL B



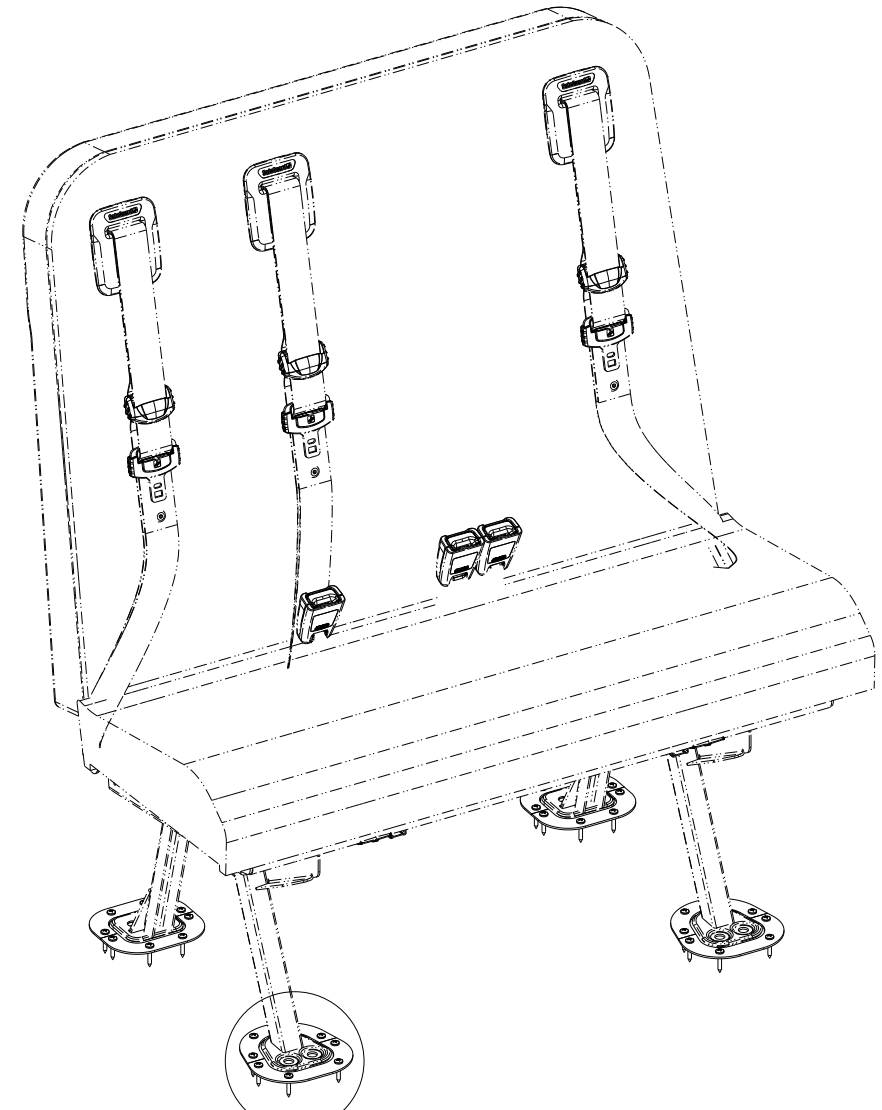
DETAIL B
SCALE 0.500

SEE DETAIL A

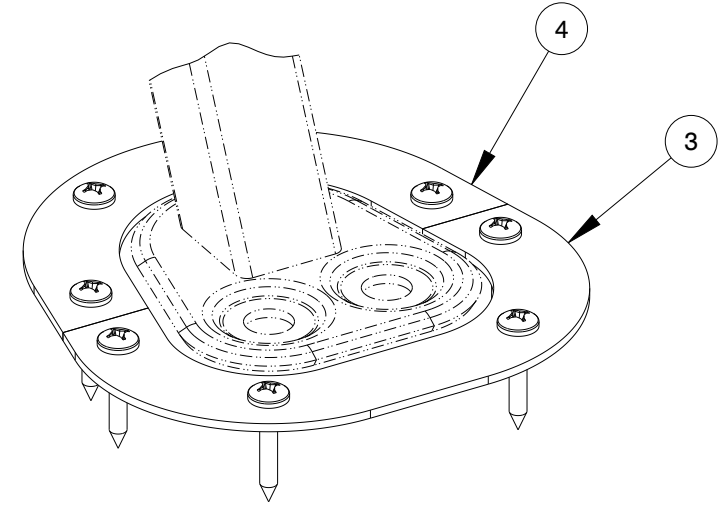
DELIVERY MUST CONFORM EXACTLY
WITH DRAWING SPECIFICATIONS
AND, WHERE REQUIRED BY O.A.,
WITH APPROVED O.A. SAMPLES.
ABSOLUTELY NO CHANGES ARE
PERMITTED WITHOUT PRIOR
APPROVAL BY THOMAS BILT-BUSES.
THIS INCLUDES CHANGES TO SOFTWARE,
MATERIALS, INTERNAL COMPONENTS
AND MANUFACTURING PROCESSES.

- NOTES:**
- 1) MATERIAL: REFER TO PART DRAWINGS
 - 2) CALCULATED WEIGHT: 0.769 LBS
 - 3) BURRS: N/A
 - 4) FINISH: N/A
 - 5) COLOR: N/A
 - 6) REFERENCE: DRILL THROUGH STEEL FLOOR WITH #19 DRILL BIT BEFORE INSTALLING SCREWS.
 - 7) PART NUMBER IDENTIFICATION: ALL COMPONENTS/ASSEMBLIES BEING PROVIDED TO TBB BY AN OUTSIDE SUPPLIER SHALL HAVE THE TBB PART NUMBER PERMANENTLY IDENTIFIED THROUGH AN ACCEPTABLE MARKING METHOD AS DESCRIBED BY 49-00051.

| ITEM | QUANTITY | PART NUMBER | DESCRIPTION |
|------|----------|-------------|-------------------------------|
| 1 | 4 | 248479 | SEAT FOOT, COVER PLATE, SABER |
| 2 | 32 | 69003119 | SCREW, TAPPING NO. 10 |
| 3 | 2 | 248481 | SEAT FOOT, COVER PLATE, SABER |
| 4 | 2 | 248482 | SEAT FOOT, COVER PLATE, SABER |

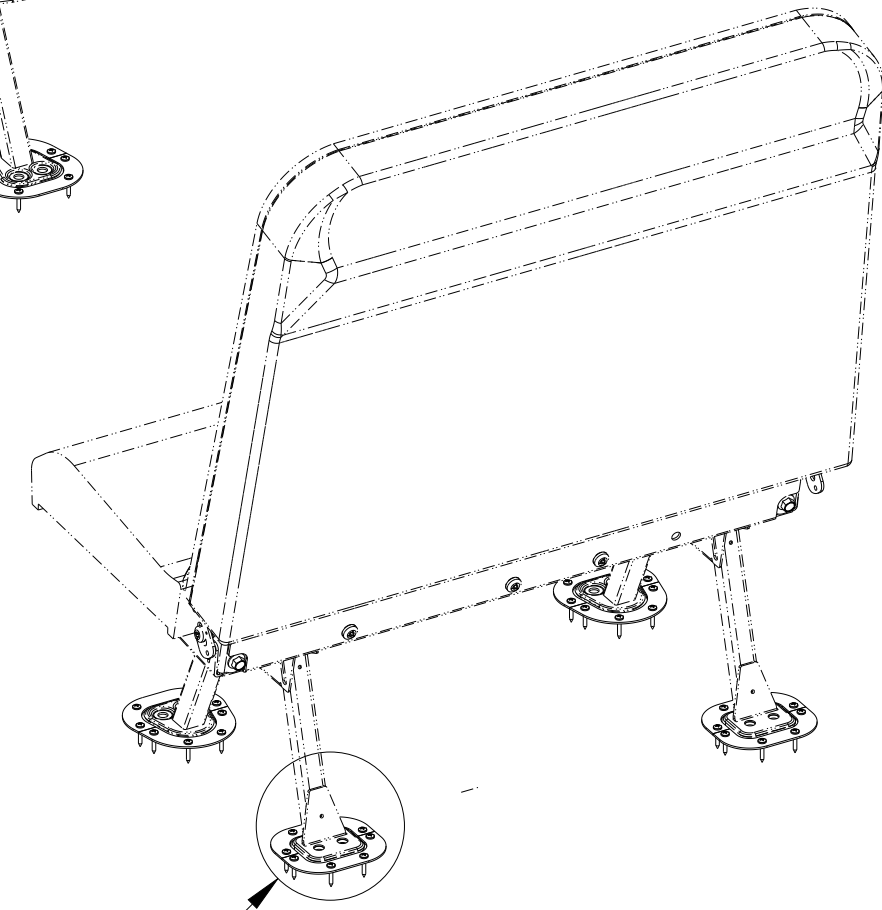


SEE DETAIL A

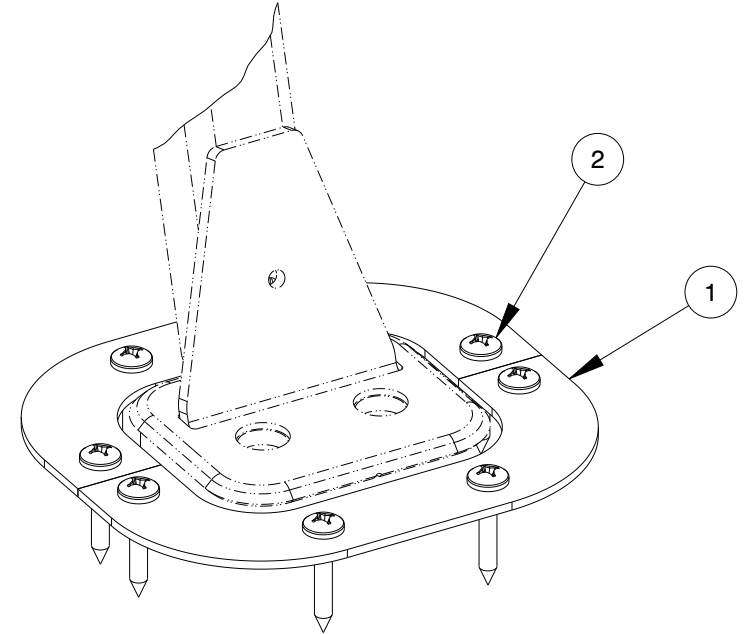


DETAIL A
SCALE 0.500

CUT RELIEF AS SHOWN AND
APPLY ADHESIVE UNDER FLOOR
COVERING BEFORE ADDING PLATE



SEE DETAIL B

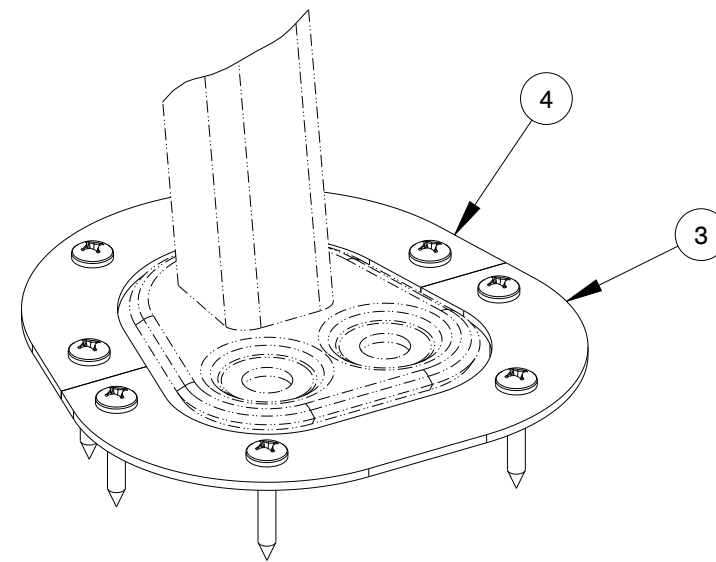
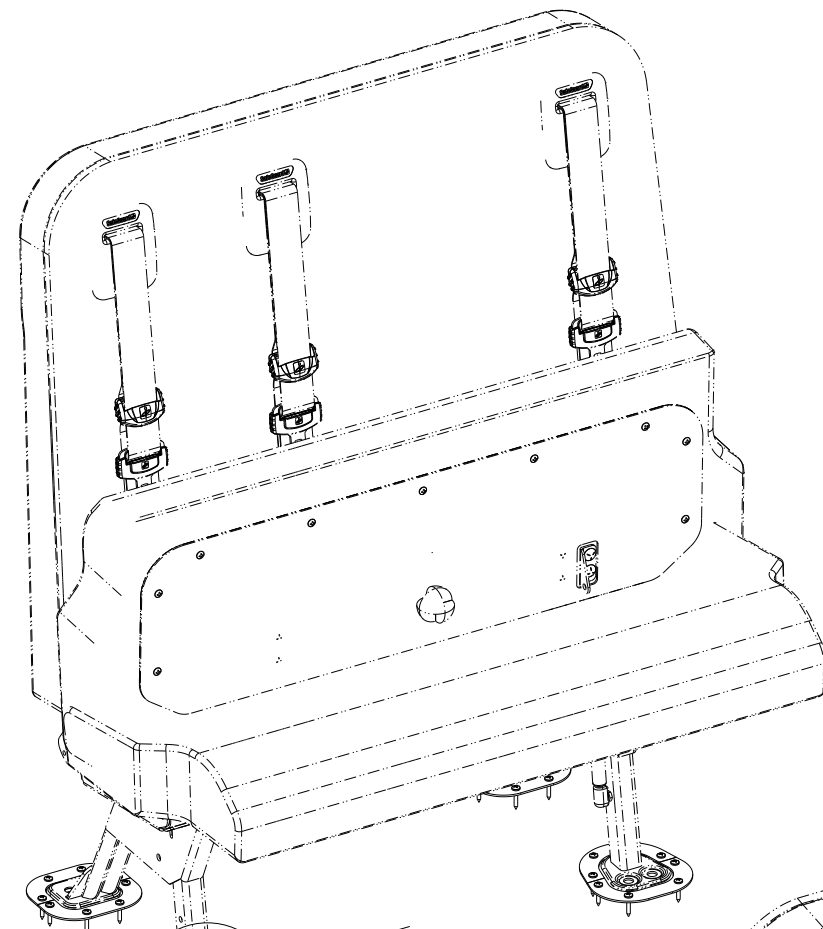


DETAIL B
SCALE 0.500

DELIVERY MUST CONFORM EXACTLY
WITH DRAWING SPECIFICATIONS
AND, WHERE REQUIRED BY O.A.,
WITH APPROVED O.A. SAMPLES.
ABSOLUTELY NO CHANGES ARE
PERMITTED WITHOUT PRIOR
APPROVAL BY THOMAS BILT-BUSES.
THIS INCLUDES CHANGES TO SOFTWARE,
MATERIALS, INTERNAL COMPONENTS
AND MANUFACTURING PROCESSES.

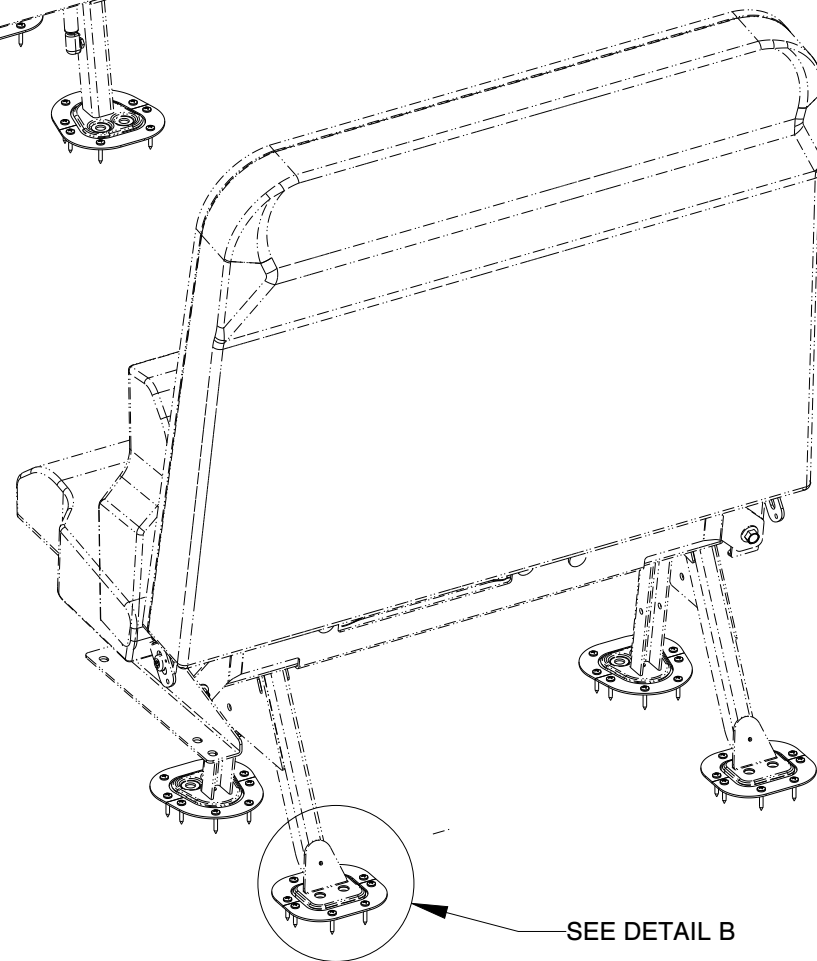
- NOTES:**
- 1) MATERIAL: REFER TO PART DRAWINGS
 - 2) CALCULATED WEIGHT: 2.461 LBS
 - 3) BURRS: N/A
 - 4) FINISH: N/A
 - 5) COLOR: N/A
 - 6) REFERENCE: N/A
 - 7) PART NUMBER IDENTIFICATION: ALL COMPONENTS/ASSEMBLIES BEING PROVIDED TO TBB BY AN OUTSIDE SUPPLIER SHALL HAVE THE TBB PART NUMBER PERMANENTLY IDENTIFIED THROUGH AN ACCEPTABLE MARKING METHOD AS DESCRIBED BY 49-00051.

| ITEM | QUANTITY | PART NUMBER | DESCRIPTION |
|------|----------|-------------|-------------------------------|
| 1 | 4 | 248479 | SEAT FOOT, COVER PLATE, SABER |
| 2 | 32 | 69003119 | SCREW, TAPPING NO. 10 |
| 3 | 2 | 248481 | SEAT FOOT, COVER PLATE, SABER |
| 4 | 2 | 248482 | SEAT FOOT, COVER PLATE, SABER |



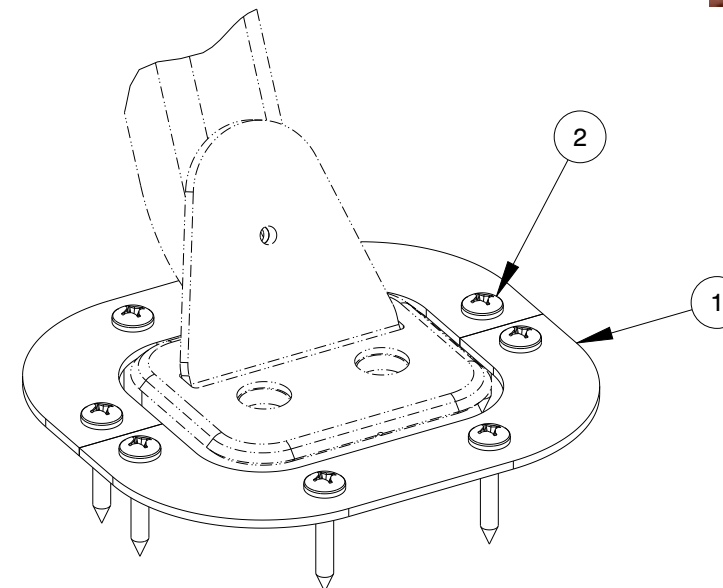
DETAIL A
SCALE 0.500

CUT RELIEF AS SHOWN AND
APPLY ADHESIVE UNDER FLOOR
COVERING BEFORE ADDING PLATE



SEE DETAIL A

SEE DETAIL B



DETAIL B
SCALE 0.500

DELIVERY MUST CONFORM EXACTLY
WITH DRAWING SPECIFICATIONS
AND, WHERE REQUIRED BY O.A.,
WITH APPROVED O.A. SAMPLES.
ABSOLUTELY NO CHANGES ARE
PERMITTED WITHOUT PRIOR
APPROVAL BY THOMAS BILT-BUSES.
THIS INCLUDES CHANGES TO SOFTWARE,
MATERIALS, INTERNAL COMPONENTS
AND MANUFACTURING PROCESSES.

NOTES:

- 1) MATERIAL: REFER TO PART DRAWINGS
- 2) CALCULATED WEIGHT: 2.019 LBS
- 3) BURRS: N/A
- 4) FINISH: N/A
- 5) COLOR: N/A
- 6) REFERENCE: N/A
- 7) PART NUMBER IDENTIFICATION: ALL COMPONENTS/ASSEMBLIES BEING PROVIDED TO TBB BY AN OUTSIDE SUPPLIER SHALL HAVE THE TBB PART NUMBER PERMANENTLY IDENTIFIED THROUGH AN ACCEPTABLE MARKING METHOD AS DESCRIBED BY 49-00051.