

104974

je

t

is

Deny

.

jest

Communication

<b>Publish Dates</b>		<b>Start Date</b> 6/12/2025 7:04 AM
<ul style="list-style-type: none"> <li>The Start Date is when the communication will be visible to dealers in DCMail.</li> <li>The End Date is when the communication will no longer be visible to dealers in DCMail.</li> <li><b>NOTE:</b> End Dates are limited to one (1) year from the Start Date. If you wish to lengthen the End Date, you may extend it at any time after publish.</li> </ul>		<b>End Date</b> 7/3/2025 11:55 PM Note: All times are EST
		<a href="#">Extend End Date</a>
<b>Title</b>		LAMP - DOME
What will display in DCMail for dealers to click on. <i>TIP: Keep titles short, but specific and eye catching.</i>		
<b>Flagged for Reporting Agency</b>		NO
<b>Communication Summary</b>		LAMP - DOME
To increase search capability and visibility of your communication, please provide a brief summary or your message (140 characters max). This will display when dealers hover over your communication.		
<b>Message</b>		
The body of your communication. Use the formatting toolbar above to format text, insert tables, pictures, and/or hyperlinks.  Click Edit > Attach File to attach documents		
<b>IMPORTANT NOTES:</b> <ul style="list-style-type: none"> <li>Pictures must have unique file names. If you receive an error message when uploading a picture, it means the file name has already been chosen. Simply change your file name and try again.</li> <li>Communications cannot exceed more than 12MB; this includes images and text, and all attachments.</li> </ul>		<p>You have been identified as either having stock on hand or in transit to your dealership.</p> <p>Please check and return suspect stock of part numbers: <b>5JG58TX7AD</b>. Please refer to QIR attachment.</p> <p>Please return all parts back to your facing depot using <b>Return Code 02</b>, before 3rd July 2025.</p> <p>For replacement place new orders.</p> <p>Return any open orders in process too. Direct questions regarding returns via email to <a href="mailto:mopardmail@stellantis.com">mopardmail@stellantis.com</a></p>

Attachments

QIR\_English.pdf

File Attachment Information

File Size (MB)	File Name
0.11	QIR_English.pdf

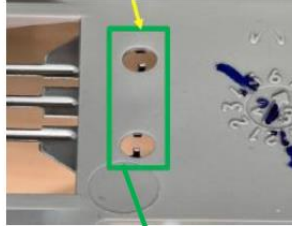


Quality Inspection Request  
**LAMP - DOME**  
Suspect Part Identification

11-June-2025

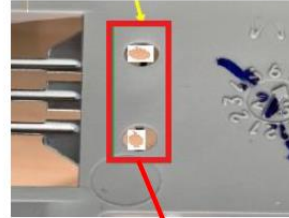
Part Number: 5JG58TX7AD

Correct Part



Good parts- Parts with Punched terminal are good parts

Suspect Part



Suspect Parts – parts without Punched terminal are suspect parts and must be returned.