

**Technical Service Bulletin (TSB)**  
**Front Harness Interference With Battery Support**

<b>REFERENCE:</b>	<b>TSB:</b> 08-197-25 <b>GROUP:</b> 08 - Electrical	<b>Date:</b>	June 19, 2025	<b>REVISION:</b>	—
<b>VEHICLES AFFECTED:</b>	<b>2025 - 2026 (B1) Jeep Renegade</b> This bulletin applies to vehicles built on or after November 01, 2024 (MDH 1101XX) and on or before April 26, 2025 (MDH 0426XX) equipped with 1.8L I4 E-Torque Engine (Sales Code EBD).			<b>MARKET APPLICABILITY:</b> <input type="checkbox"/> NA <input type="checkbox"/> MEA <input checked="" type="checkbox"/> SA <input type="checkbox"/> IAP <input type="checkbox"/> EE <input type="checkbox"/> CH <b>NOTE:</b> This bulletin applies to South America markets.	
<b>CUSTOMER SYMPTOM:</b>	<b>Customers may comment on one or more of the following:</b> <ul style="list-style-type: none"> <li>Warning light on Instrument Panel Cluster (IPC), with warnings of electric fan faults.</li> <li>Smoke smell.</li> </ul>				
<b>CAUSE:</b>	Contact between the wiring harness and the vehicle battery holder				

This Technical Service Bulletin (TSB) has also been released as a Rapid Service Update (RSU) 25-112, date of issue June 19, 2025. All applicable RSU VINs have been loaded. To verify this RSU service action is applicable to the vehicle, use VIP or perform a VIN search in DealerCONNECT/Service Library. All repairs are reimbursable within the provisions of warranty.

**REPAIR SUMMARY:**

This bulletin involves inspecting for wire harness interference and possibly inserting a corrugated tube, anti-abrasive tape noise, a suppressor plate and, if necessary, repairing the wiring harness.

**CLAIMS DATA:**

Labor Operation No:	Labor Description	Skill Category	Labor Time
08-90-65-9H	Harness, Front Wiring - Inspection (0 - Introduction)	6 - Electrical and Body Systems	0.3 Hrs.
08-90-65-9J	Harness, Front Wiring - Inspection and Repair (0 - Introduction)	6 - Electrical and Body Systems	0.6 Hrs.
Failure Code	ZY	Service Action	

**SPARE PARTS:**

Qty	Part No.	Description	Notes
1 (AR)	NA - 68754246AA SA - 7099501	Cestello Campaign Kit	The Cestello Campaign Kit contains the following: <ul style="list-style-type: none"> <li>• Fita Antiabrasiva (20cm)</li> <li>• Feltro (7cm<sup>2</sup>).</li> <li>• Tubo Corrugado 23mm. x 90mm. (0.9 in. x 3.5 in.).</li> </ul> <b>Reimbursement only.</b>

**DIAGNOSIS:**

If a customer's VIN is listed in VIP or your RSU VIN list, perform the repair. If any vehicle not on the VIN list exhibits any of the symptom listed above in the customer symptom section, perform the Repair Procedure.

**SPECIAL TOOLS/EQUIPMENT:**

Description	Ref. No.	Notes
wiTECH or Equivalent	-	-

**REPAIR PROCEDURE:**

1. Loosen and reposition the coolant reservoir [Fig. 1](#). Refer to the detailed service procedures available in DealerCONNECT/Service Library under: Service Info> 1088B10 - Expansao reservoir - remocao/ recolocacao.

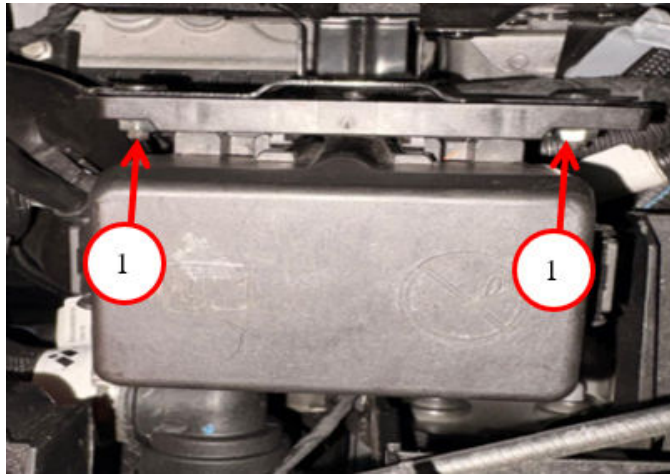


**Fig. 1**  
Cooling Reservoir

1 - Reposition Coolant Reservoir.

**NOTE: It is not necessary to drain the coolant.**

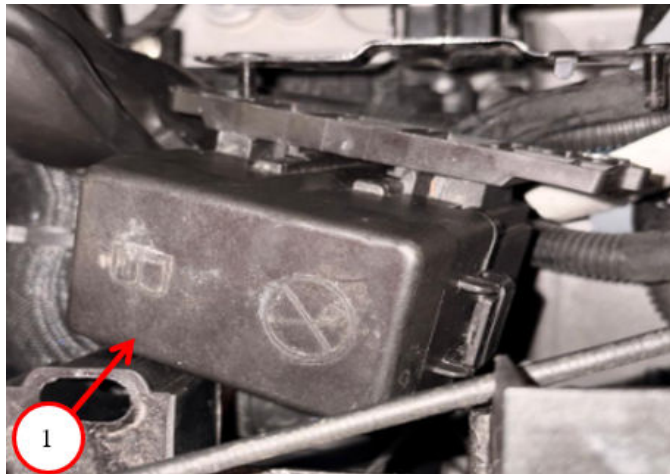
2. Remove the fuse box (module 2A5) nuts [Fig. 2](#).



**Fig. 2**  
Remove Fuse Box Nuts

1 - Fuse Box Nut Location

3. Remove the fuse box (module 2A5) to gain access to the bracket plate [Fig. 3](#).

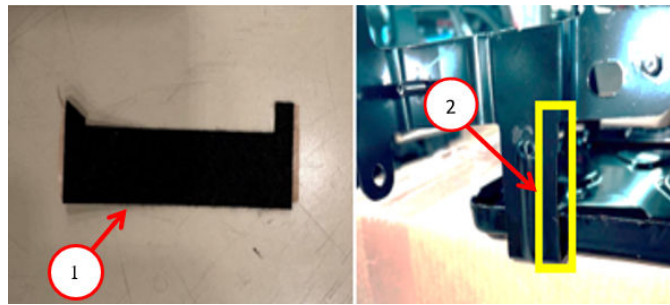


**Fig. 3**  
Remove Fuse Box

1 - Fuse Box

4. Inspect for wire harness interference with the battery holder.
5. Is there interference from the wire harness with the battery holder?
  - YES>>> Proceed to [Step 6](#).
  - NO>>> Proceed to [Step 7](#).
6. Repair the damaged wire harness. Refer to the detailed service procedures available in DealerCONNECT/ Service Library under: “Service Info > Informações sobre serviço> Procedimentos Padrão – NI - Reparo de Chicote- Emenda Utilizando Luvas Termorrestringentes” and then proceed to [Step 7](#).

7. Apply felt (7cm<sup>2</sup>) to the battery holder plate [Fig. 4](#).

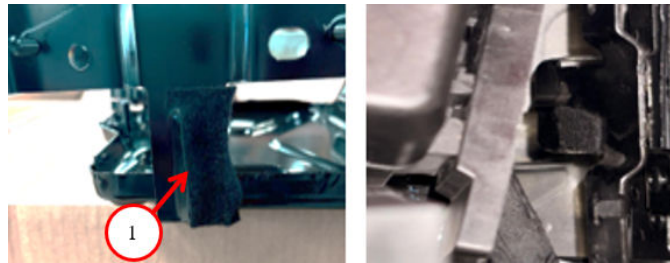


**Fig. 4**  
Apply Felt

1 - Felt  
2 - Felt Installation Location

---

8. Wrap the battery holder plate with the felt [Fig. 5](#).



**Fig. 5**  
Battery Holder Plate Location

1 - Felt Applied To Battery Holder Plate

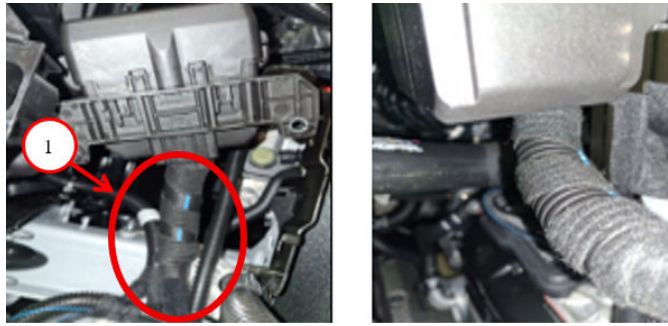
---

9. Cut a corrugated PVC tube with a diameter of 23 mm. (0.9 in.) and a length of 90 mm. (3.5 in.) [Fig. 6](#).



**Fig. 6**  
PVC Tube

10. Apply the PCV tube and secure the PCV tube with tape [Fig. 7](#).



**Fig. 7**  
PCV Tube

1 - Wrapped PCV Tube Installed

11. Position and secure the fuse box to its installed position [Step 3](#).
12. Position and secure the coolant reservoir to its installed position [Step 1](#).
13. Clear any Diagnostic Trouble Codes (DTCs) that may have set.
14. Check for any DTCs that may have returned after clearing DTCs.
15. Did any DTCs set after clearing?
  - YES>>> Normal DTC diagnosis should be performed.
  - NO>>> This bulletin has been completed.

**NOTE: After applying this TSB, it is not necessary to send DID-I or DID-A.**

**POLICY:**

Reimbursable within the provisions of the warranty.

*This bulletin is supplied as technical information only and is not an authorization for repair. No part of this publication may be reproduced, stored in a retrieval system, or transmitted, in any form or by any means, electronic, mechanical, photocopying, or otherwise, without written permission of FCA US LLC.*