



## STAR ONLINE PUBLICATION



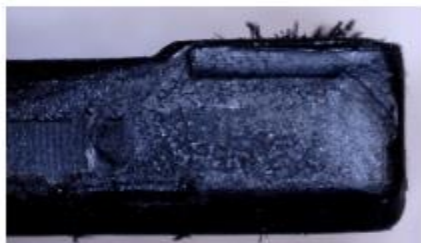
**Case Number:** S2523000060

**Release Date:** June 2025

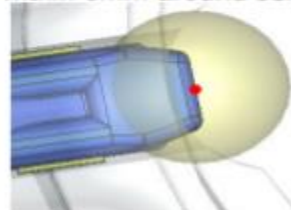
**Symptom/Vehicle Issue:** Antilock Brake System (ABS) Lamp on. Diagnostic Trouble Code(s) (DTC) C0037-2F, C003A-2F Left Or Right Rear Speed Sensor Signal Erratic Set.

**Customer Complaint/Technician Observation:** Customer complaint of intermittent or steady ABS or Electronic Stability Control (ESC) lamps on. Technician finds C0037-2F, C003A-2F DTC stored or active. Could also have paired with DTCs C003A-1D Right Rear Wheel Speed Sensor Circuit Current Out Of Range, C0037-1D Left Rear Wheel Speed Sensor Current Out Of Range stored after wheel speed sensor circuit testing. See the below information if the complaint and DTCs are present.

**Discussion:** Inspection of the tone wheel should be performed. Metal dust or flakes could gather around the tone wheel area causing a false signal and resulting in the DTC setting. Repair will include disassembly, inspecting the tone wheel, removing/cleaning the debris from the wheel speed sensor or the interface assembly.



Example: steel knuckle within 6mm around sensor



Metallic Debris Gathered At Wheel Speed Sensor Tip

This document does not authorize warranty repairs. This communication documents a record of past experiences. STAR Online does not provide any conclusions about what is wrong with the vehicle. Rather, it captures all previous cases known that appear to be similar or related to the vehicle symptom / condition. You are the expert, and you are responsible for deciding on the appropriate course of action.

**Contact STAR Center, or your Technical Assistance Center Via TechConnect, eCONTACT or Service Library entry if no solution is found.**

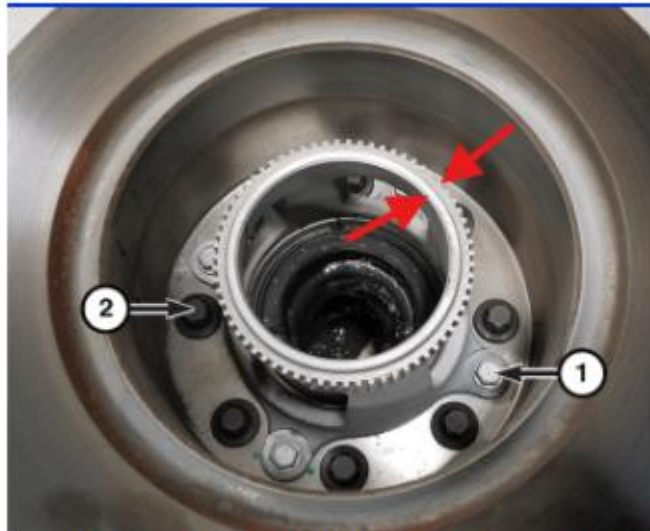


## STAR ONLINE PUBLICATION



These trucks have the wheel speed sensor hub mounted:

- A. Refer to Service Library 05 - Brakes / 05 - Brakes, ABS / Electrical / RING, Tone / Removal and Installation.
- B. Clean and remove any debris including rust dust, particles sticking to the wheel speed sensor or the hub and tone wheel area. See the image below. Reassemble the vehicle.
- C. Perform a test drive. If the condition returns after a test drive, then replace the wheel speed sensor.
- D. If the condition repeats after sensor replacement, please replace the tone wheel.



Tone wheel in-between the arrows

This document does not authorize warranty repairs. This communication documents a record of past experiences. STAR Online does not provide any conclusions about what is wrong with the vehicle. Rather, it captures all previous cases known that appear to be similar or related to the vehicle symptom / condition. You are the expert, and you are responsible for deciding on the appropriate course of action.

**Contact STAR Center, or your Technical Assistance Center Via TechConnect, eCONTACT or Service Library entry if no solution is found.**