



INSTRUCTION TO SERVICE

ITS-61345		May 27, 2025
SECTION:	292-Electrical Harnesses	
SUBJECT:	Battery Compartment Fuse Rework - J45	
ISSUE:	The mini fuses in the battery compartment for the condenser may not be enough for certain load conditions and could damage the fuses	
SUMMARY:	This bulletin outlines steps to replace the existing harness with mini fuses to a more robust design and heavier duty fuses	

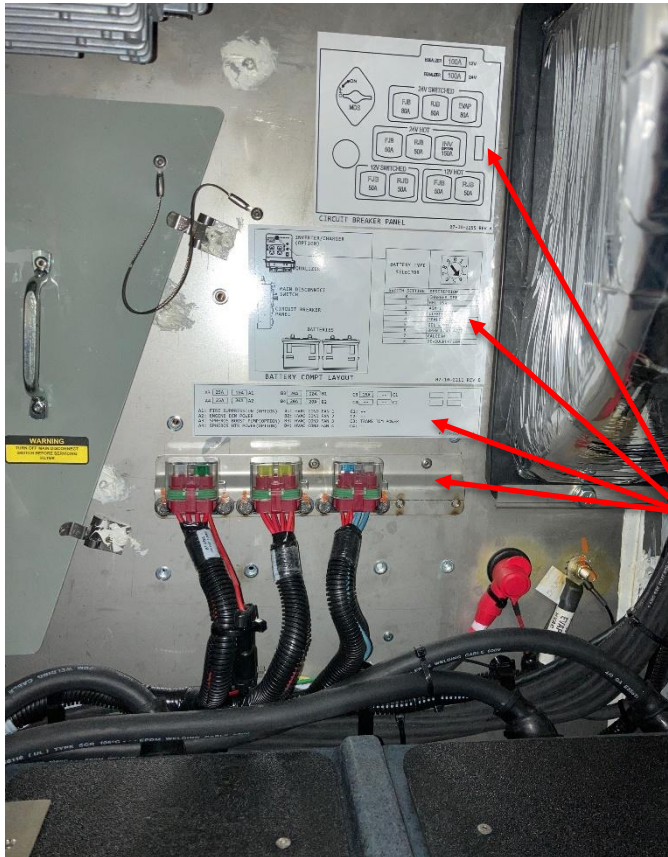
ITS61345

Ref. NHTSA Recall No.	Ref. Transport Canada Recall No.
Not Applicable	Not Applicable

THIS ITS DOCUMENT SHOULD BE RETAINED AND REFERRED TO FOR FUTURE MAINTENANCE UNTIL THE PARTS AND/OR SERVICE MANUAL IS UPDATED TO REFLECT WORK DONE AS A RESULT OF THIS DOCUMENT. ENSURE THAT THIS DOCUMENT IS AVAILABLE FOR PARTS AND MAINTENANCE STAFF GOING FORWARD.

PROCEDURE:

1. Set park brake and chock wheels.
2. Turn the main battery disconnect switch to the "OFF" position.
3. Remove and discard the fuse layout decals, and VEC fuse bracket.



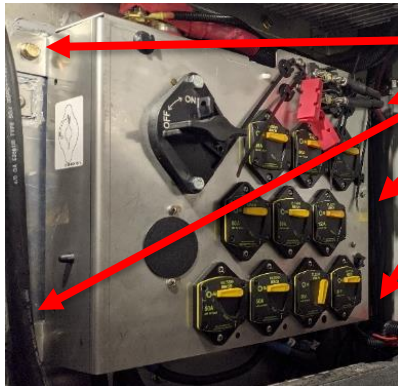
Remove and discard the decal and bracket

4. Cut the zip ties securing the ground cable.



Cut ground cable tyrap

5. Remove and save the five screws securing the circuit breaker assembly.



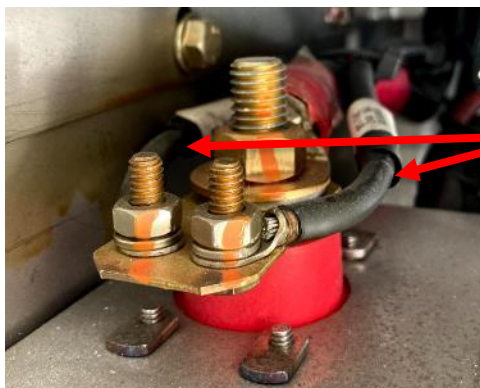
Remove and save screws
securing the CB assembly

6. Remove and discard the fuse block harnesses connected to 24V Hot and 12V Hot studs behind the MDS.
For coaches with DD13, retain the ACM connection with maxi fuse and leave it connected to 12V Hot stud.



Remove and discard 24V and
12V Hot fuse block harness

7. Install 24V Hot jumper harness (PN: 1108662) to the 24V Hot stud and torque the nut to 150 In-Lbs.
8. Install 12V Hot jumper harness (PN: 1108665) to the 12V Hot stud and torque the nut to 150 In-Lbs.
9. Remove and discard the 24V SW harness connected to the EC Power Busbar.

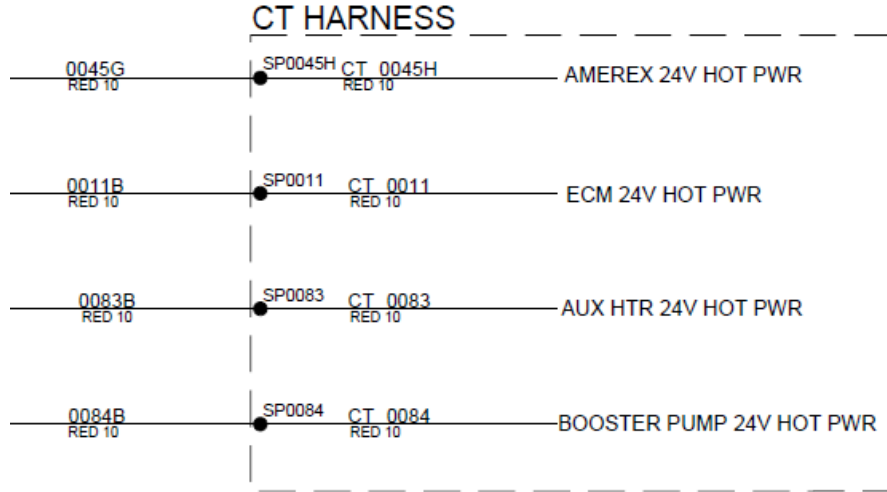


Remove and discard
24V SW harness

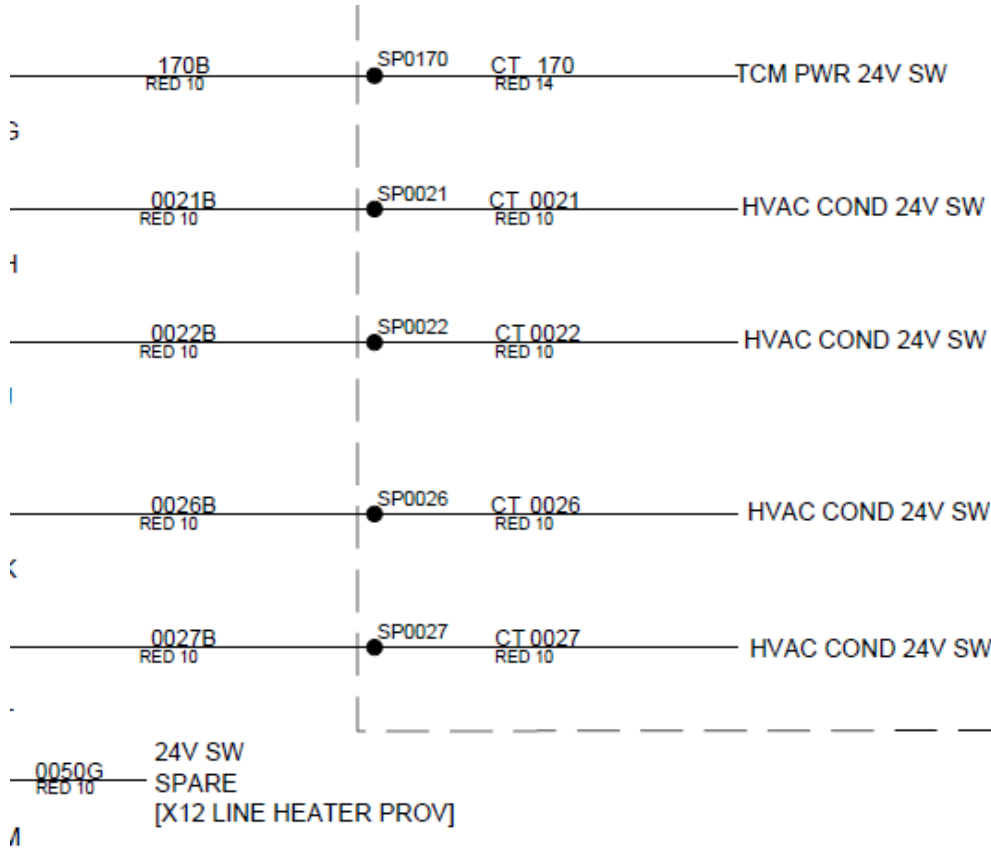
10. Install 24V SW jumper harness (PN: 1108652) to the EC power busbar and torque to 65 In-Lbs.
11. Identify and blind cut following wires from the fuse holder section, wires: 0011, 0083, 0084, 0034, 170, 0021, 0022, 0026, and 0027. If the coach is equipped with DD13 engine, also cut wire ID 0004.



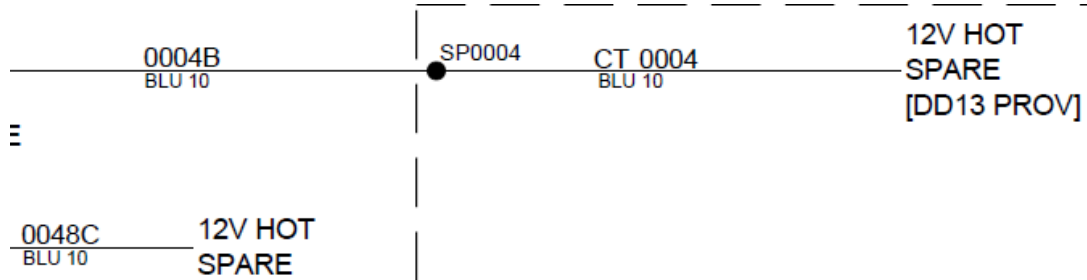
12. Using splice, solder and heat shrink, splice wire IDs as shown below between spliced wires and 24V HOT jumper harness.



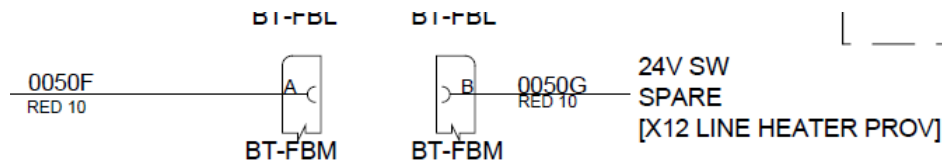
13. Using splice, solder and heat shrink, splice wire IDs as shown below between spliced wires and 24V SW jumper harness.



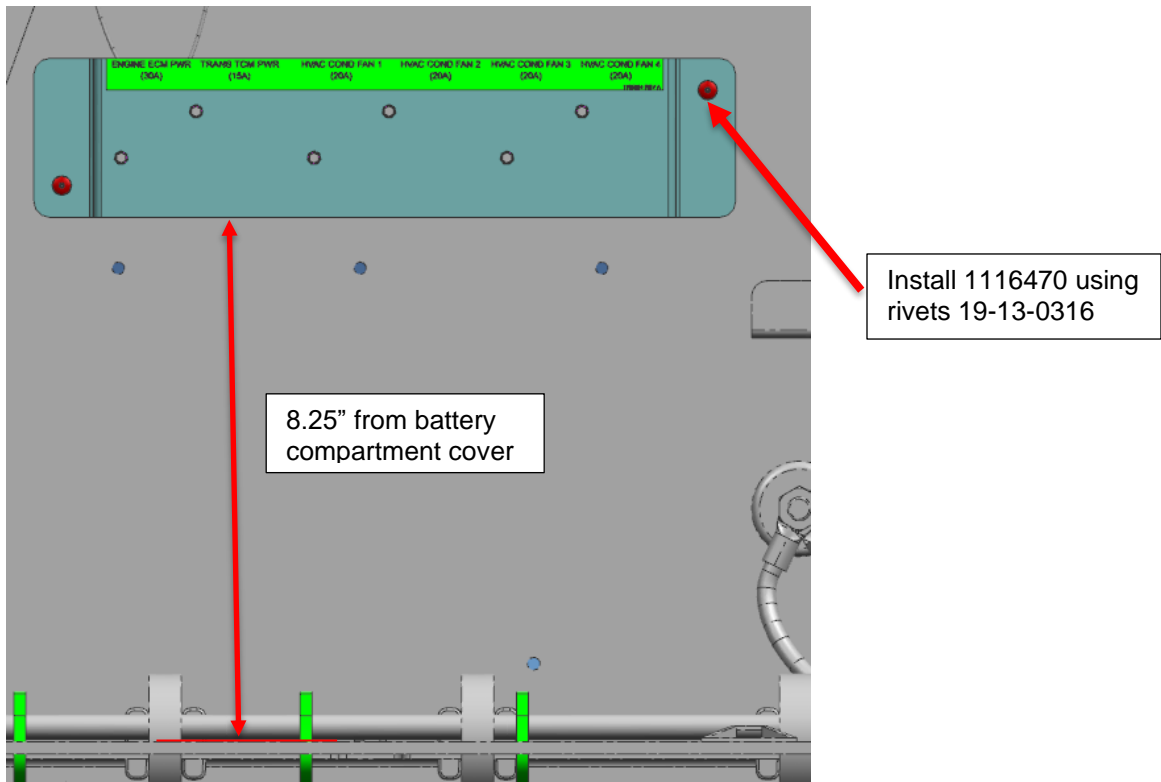
14. If the coach is equipped with DD13 engine, follow this step. Otherwise, skip to step 16. Using splice, solder and heat shrink, splice wire IDs as shown below between spliced wires and 12V HOT jumper harness.



15. If the coach is equipped with X12 engine and line heater, follow this step. Otherwise, skip to step 17. Using splice, solder and heat shrink, splice wire ID 0034 to the 24V SW jumper harness spare 0050G shown below.

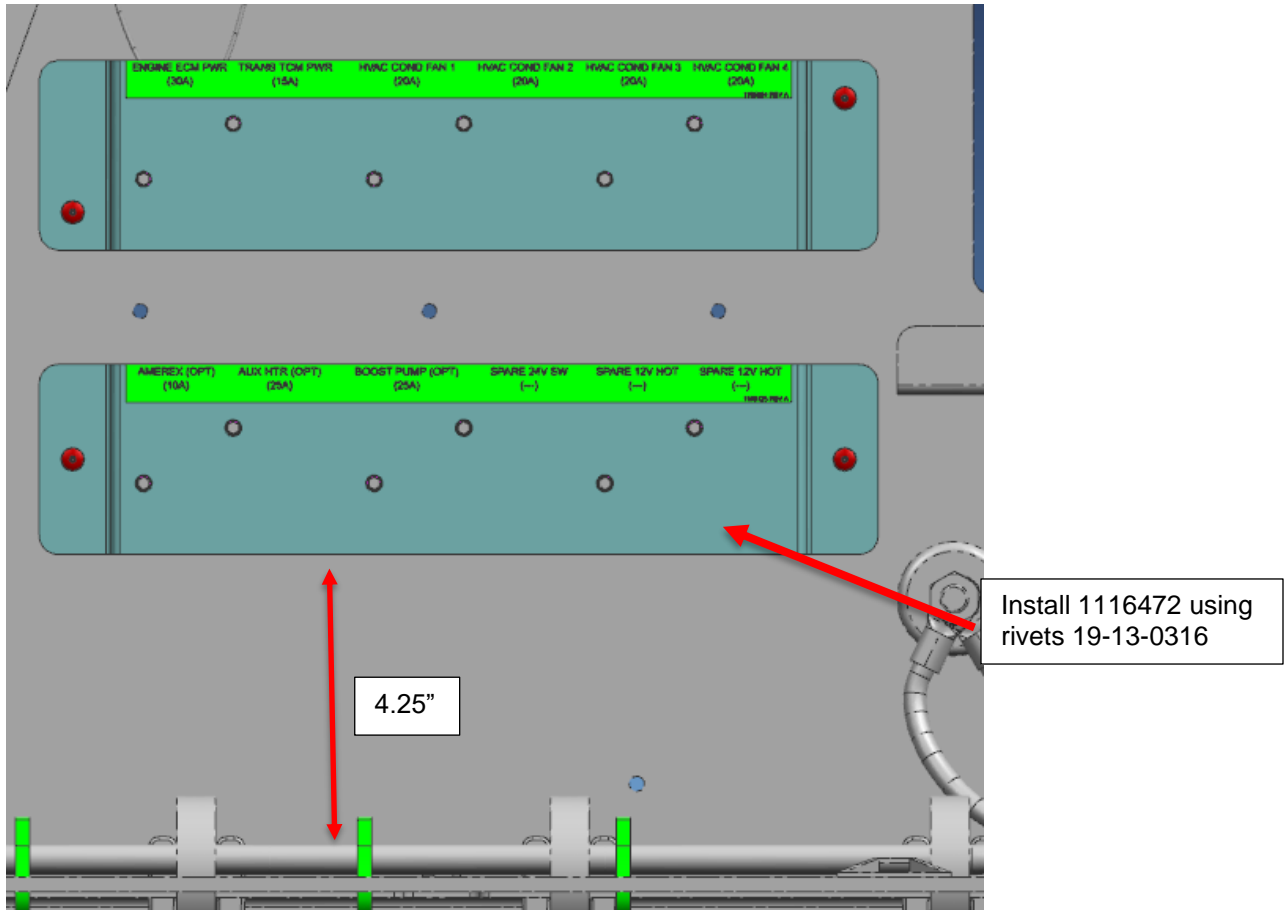


16. Using top fuse mounting bracket (PN: 1116470) as template at the location shown below, drill 0.164" holes for mounting and install the bracket using rivets, PN: 19-13-0316.

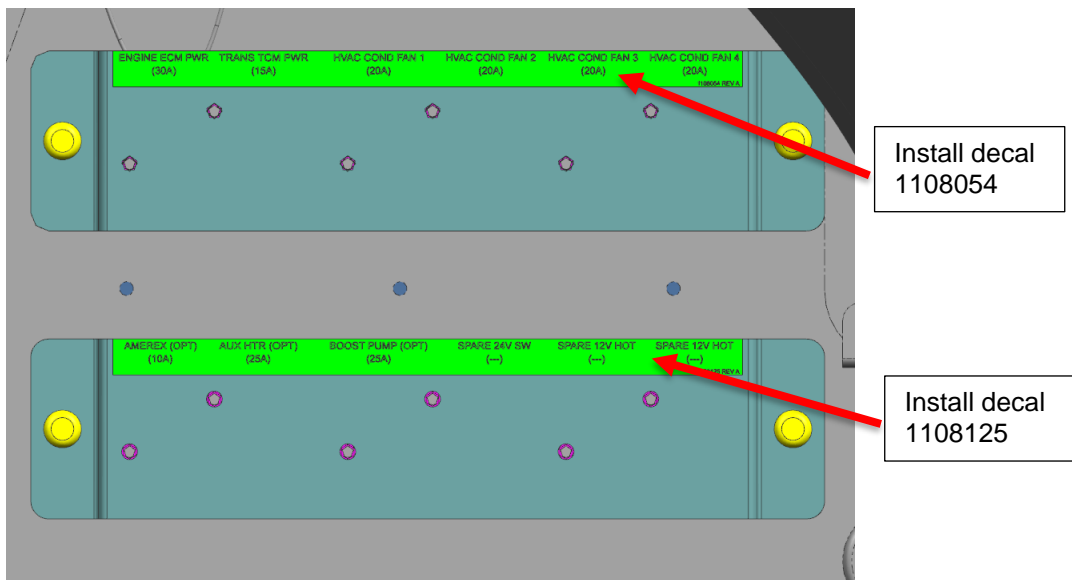


⚠ WARNING: Maintain extreme caution while drilling the holes to avoid damaging the evap coils.

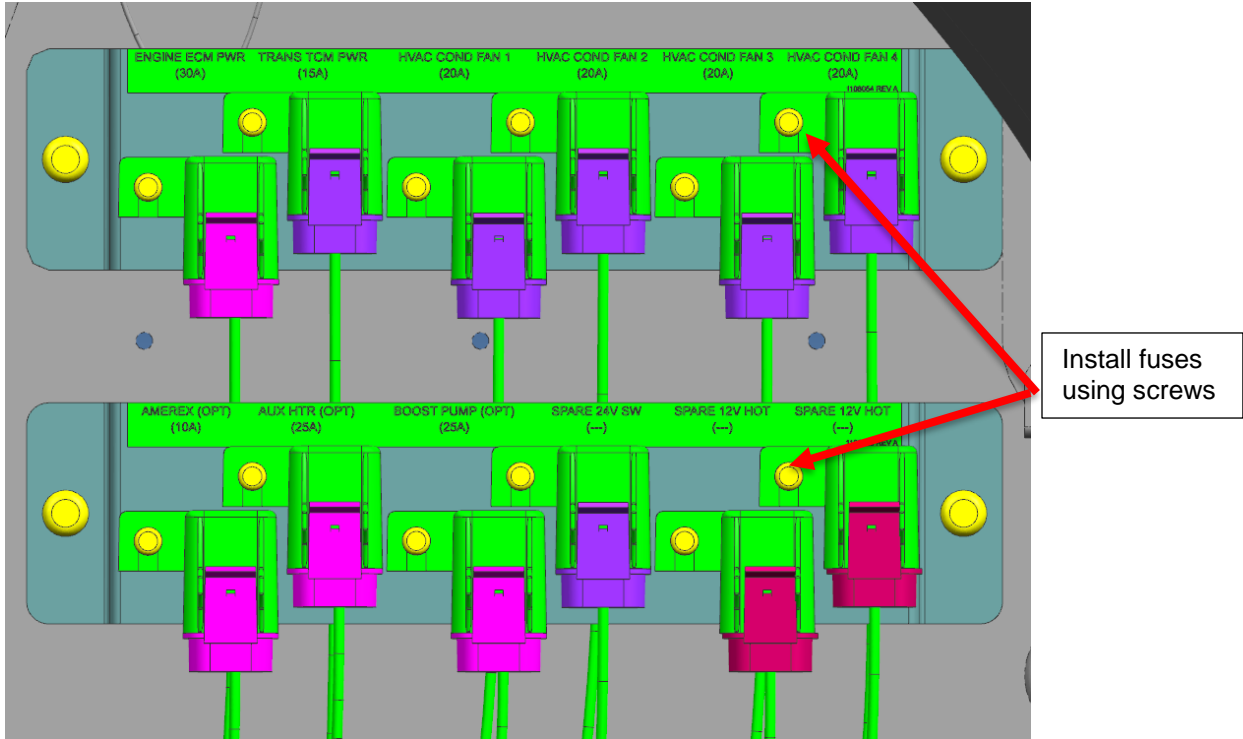
17. Using bottom fuse mounting bracket (PN: 1116472) as template at the location shown below, drill 0.164” holes for mounting and install the bracket using rivets (PN: 19-13-0316)



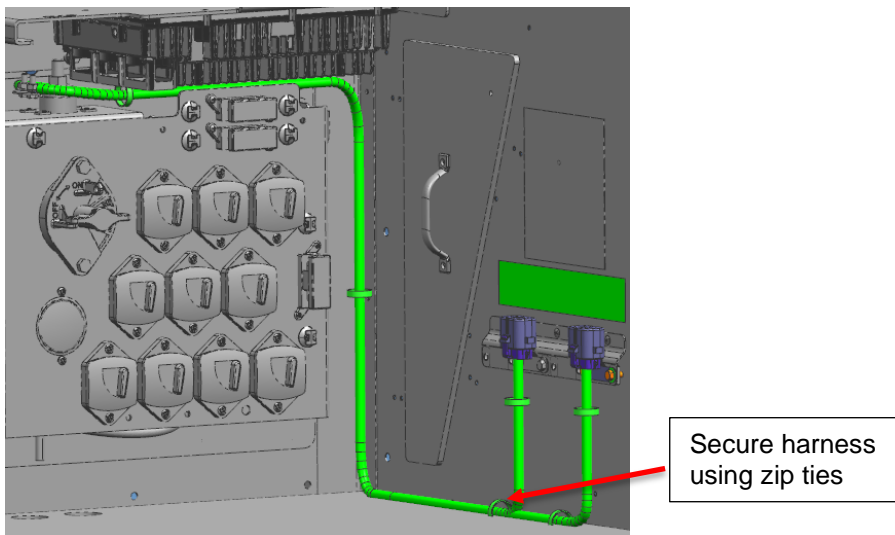
18. Clean the brackets with isopropyl alcohol and allow 5 min flash off time. Install decal (PN: 1108054) on the top bracket and decal (PN: 1108125) on the bottom bracket.



19. Follow the decals to install the fuse holders to the brackets and install fuses accordingly using screws (PN: 14S98006).

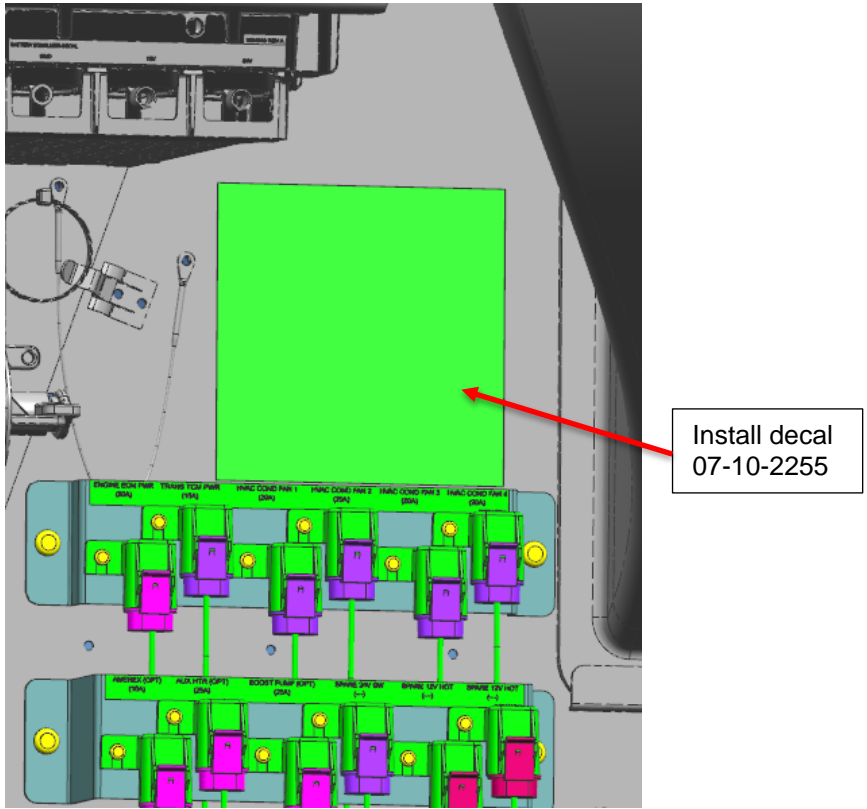


- 20. Install 20A fuse to the fuse holder with X12 option wire 0034.
- 21. Install 30A fuse to the fuse holder with DD13 option wire 0004.
- 22. Use zip ties, (PN: 5955945) to secure the harnesses to the existing harness in battery compartment.

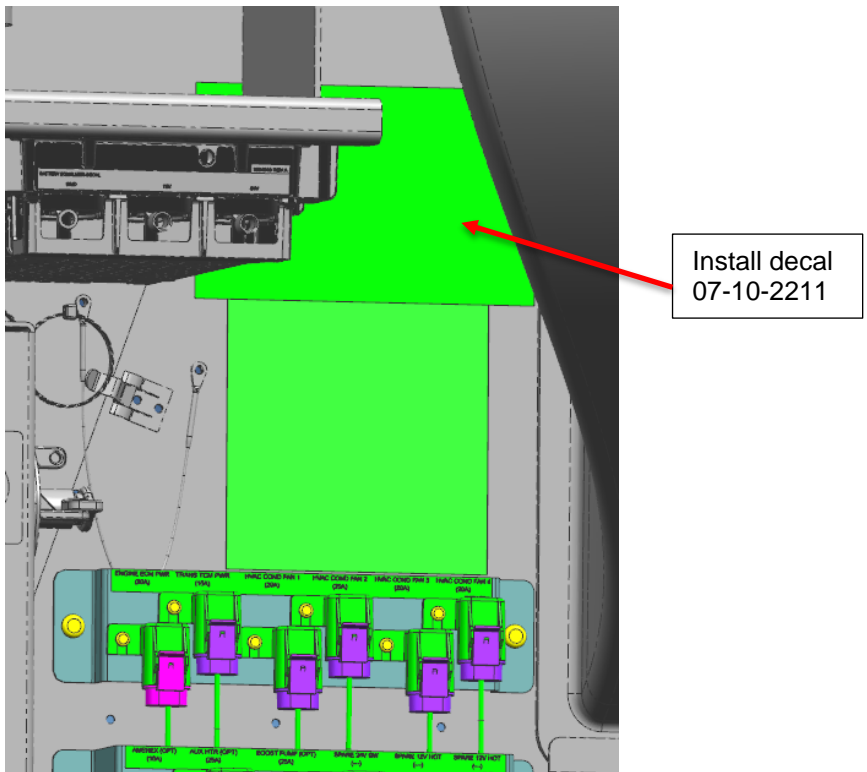


23. Clean the surface of the battery compartment wall above the fuse holder brackets with isopropyl alcohol and allow 5 min flash off time.

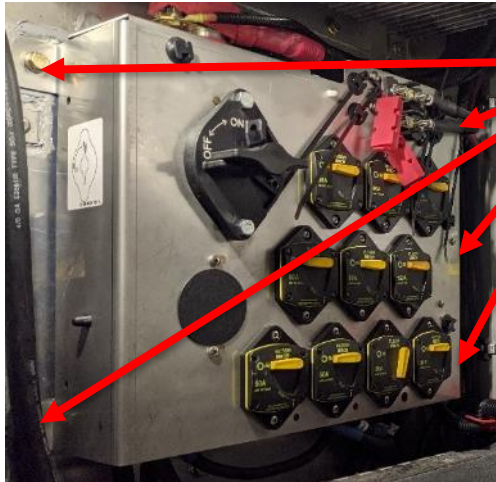
24. Install circuit breaker panel decal (PN: 07-10-2255) above the fuse holder bracket.



25. Install battery compartment layout decal (PN: 07-10-2211) above the circuit breaker panel decal.



26. Mount the circuit breaker assembly to the adapter plate using the saved cap screws. Torque cap screws to 9 FT-LBS.



Mount circuit breaker assembly

27. Using cable ties (P/N: 5955945) secure the battery ground to the left side of the circuit breaker assembly.



Secure ground cable using tyraps



LABOUR ESTIMATE				
	Operation	Number of Technician(s)	Hours	Labor Time T X HR
1	Battery Compartment Fuse Rework - J45	1	3	3

PARTS REQUIRED					
Item	Part Number	Description	Qty. per Coach	Units	Notes
1	1108662	HRNS-BATT FH 24V HOT JMPR	1	EA	
2	1108665	HRNS-BATT FH 12V HOT JMPR	1	EA	
3	1108652	HRNS-BATT FH 24V SW JMPR	1	EA	
4	1116472	ASSY-BRACKET FUSE HOLDER	1	EA	
5	1116470	ASSY-BRACKET FUSE HOLDER	1	EA	
6	19-13-0316	RIVET-1/4 SS .08-.575GP	4	EA	
7	1108054	DECAL-BATT COMPT FUSES	1	EA	
8	1108125	DECAL-BATT COMPT FUSES	1	EA	
9	14S98006	SCREW MACHINE NO.8-32 3/8	12	EA	
10	07-10-2255	DECAL-CIRCUIT BREAKER PANEL, J4500	1	EA	
11	07-10-2211	DECAL-BATTERY COMPT. LAYOUT	1	EA	
12	5955945	TYRAP-14.5 BLACK	15	EA	
13	8112224	PLUG FUSE IN 10A	1	EA	
14	8112225	FUSE PLUG IN 15A	1	EA	
15	8112226	FUSE PLUG IN 20A	5	EA	
16	8112227	FUSE PLUG IN 25A	2	EA	
17	8112228	FUSE PLUG IN 30A	2	EA	
18	19-11-2441	HEAT SHRINK-4-1	3	FT	
19	1122073	SPLICE	12	EA	
20	115540	FUSE HOLDER CAP	12	EA	

SPECIAL TOOLS REQUIRED					
Item	Part Number	Description	Qty.	Units	Notes
1	23-05-0005	ALCOHOL - ISOPROPYL			
2	1109772	SCHEM-BATTERY COMP. FUSES			