



TSB- ST02025- 002 HILT Electrical Maintenance

Overview:

These instructions detail the process for removing a fuse and installing an inline blade fuse within the small electrical cabinet located in the loft/bed area. Implementing the outlined procedures will mitigate the battery drain issue originating from the Storyteller cabin. It is important to note that the RAM chassis possesses an independent battery drain mechanism that falls outside the scope of our intervention. For safe and effective completion, carefully adhere to the following procedures. Contact Storyteller if you have any questions or require assistance with these instructions.

Applicable Vehicles:

Certain GXV HILTs

Safety Alert:

All work completed under the scope of this TSB must be performed by qualified individuals. The following procedure will be performed in the electrical cabinet inside the cabin. There is a risk of electric shock due to the work being performed on high voltage components. Make sure the truck's ignition and house power system is turned off while performing the repair work. Exercise extreme caution when attempting to perform these steps. Reach out to Storyteller Overland should you have any questions or concerns.

Tools and Supplies Needed:

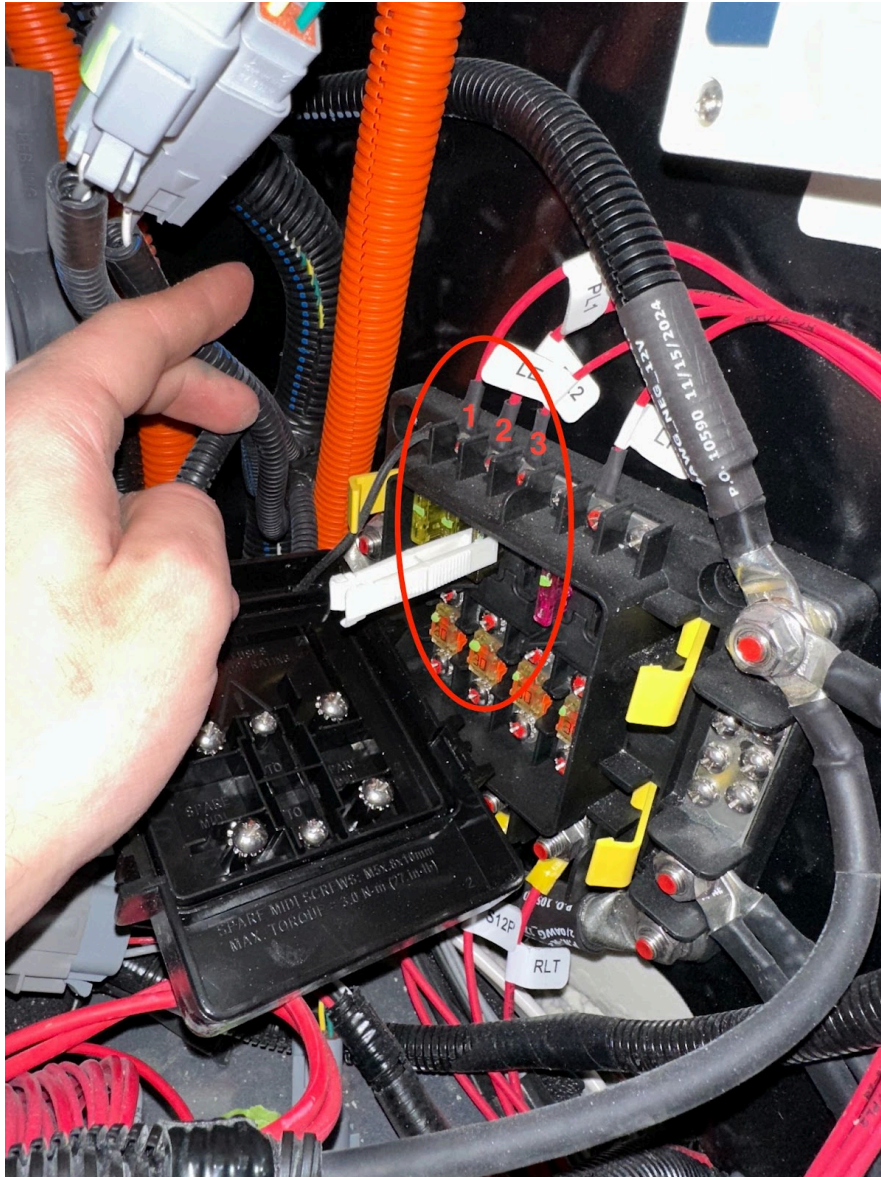
- Wire Cutters
- Wire Strippers
- Wire Crimpers

Parts Provided

- 14AWG, 20A inline fuse with butt connectors

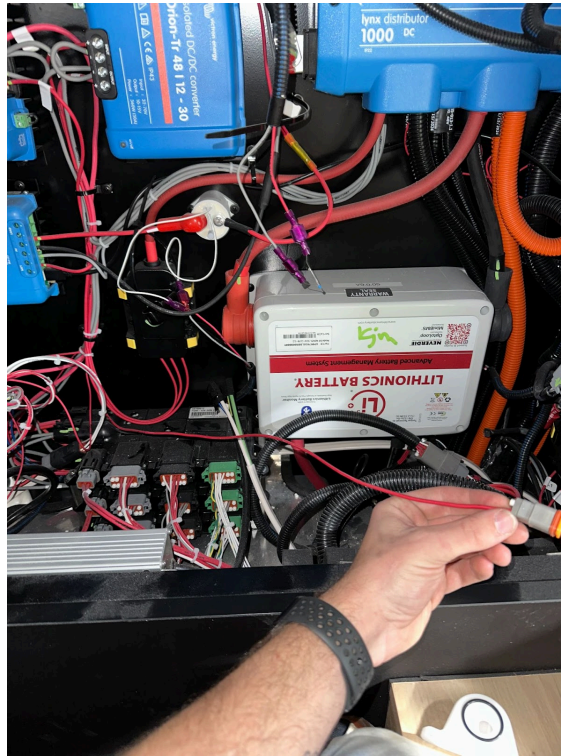
Repair Procedure:

1. Verify house power system is turned off and both chassis batteries are disconnected
2. Remove cover from the cabinet in the loft/bed area
3. Remove cover from mini fuse bus on right hand side by unhooking the four yellow clips and removing cover
4. Remove the third blade fuse located at the top left. Discard this fuse, it will not be reinstalled.

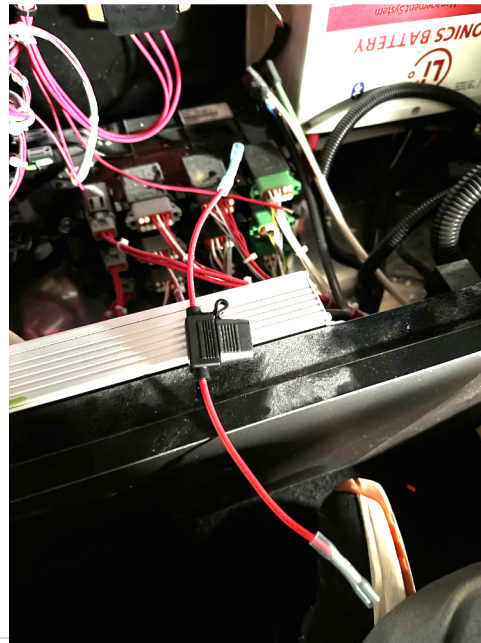
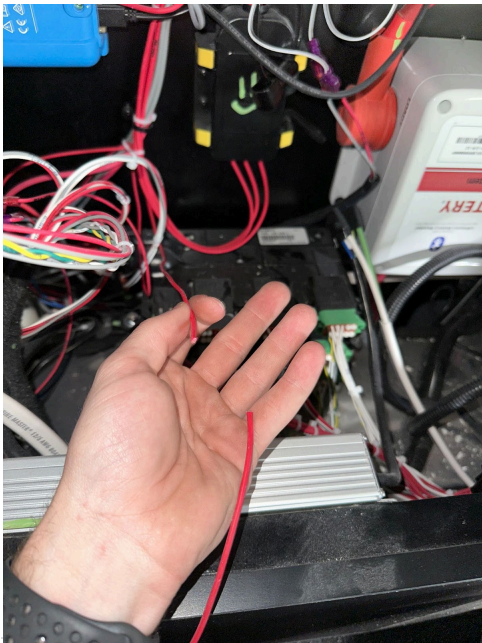


STORYTELLER OVERLAND.

5. Reinstall cover to mini fuse box
6. Locate the red wire behind PDM going to deutsch connector. It could be labeled with *wire#30* or *DCDC_12V_PWR*. To verify this is the proper cable, verify it has electrical continuity to pin 87A on *Lithionics Engine Run Heat Relay*.



7. Cut wire and add provided inline fuse



STORYTELLER OVERLAND.

8. Orient the newly crimped wire so that it lays nicely and is out of the way.
9. Reinstall the cover to the cabinet.

Overview:

This Document Provides step-by-step instructions for swapping specific wires and changing the breakers that protect the air compressor and winch. These changes will resolve the issue of the air compressor tripping the breaker, ensuring proper operation. Follow the procedures carefully to complete the adjustments safely and effectively. Please contact Storyteller should you have any questions or need any assistance with these instructions.

Applicable Vehicles:

Hilt #1-41 with mismatch in wire gauge to under hood circuit breakers. Any Hilt with 00AWG wire on one side and 2 AWG on the other side of the 60A breaker is applicable.

If the 60A breaker has 2AWG on both sides and the 150A breaker has 00AWG on both sides, it is excluded.

Safety Alert:

Before removing or replacing any wires, disconnect the negative lead from both chassis batteries.

The compressor and winch are constantly powered. Failure to disconnect the battery could result in serious injury or death.

Tools and Supplies Needed:

- 10 mm socket
- Ratchet
- Torque wrench
- Provided replacement double aught cable.

Repair Procedure:

1. Remove the Negative terminal located on the driver & Passenger side chassis battery.
 - a. Remove the Negative terminal with a 10mm ratchet. **Figure 1.**
 - b. Ensure that nothing is touching the post before moving forward.

Passenger Side



Figure 1.

Driver Side



2. Remove the current air compressor wire from the breaker and chassis.
 - a. Remove the wires from the chassis battery. **Figure 2a**
 - b. Next remove the wires from the 60 amp breaker **Figure 2b**

Figure 2a.



Figure 2b.



Figure 3

3. Swap breaker Locations.

- a. Start by removing connections on both breakers using a 10mm.
- b. Now take a 10 mm and remove both breakers.
- c. Swap the positions so that 150 is furthest towards the front, and 60 is towards the chassis battery.

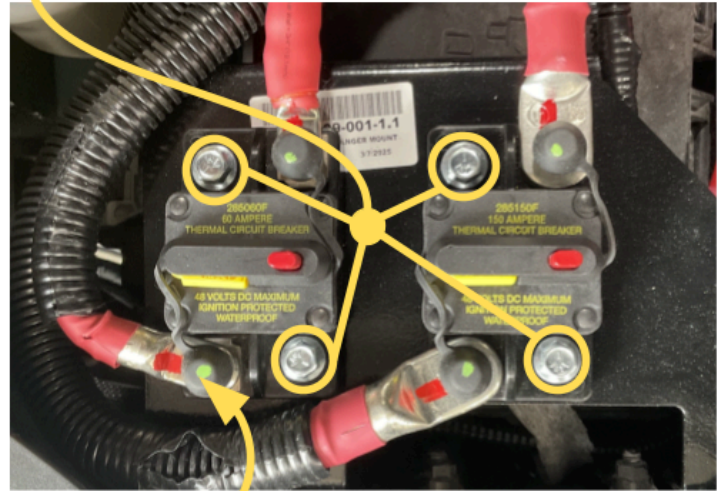


Figure 4



4. Install wires back onto breakers.

- a. When putting wires back all wires will remain where they were previously.
- b. Add the provided wire to the breaker and chassis busbar
- c. Verify 2AWG wire is going to both sides the 60A breaker and 00 AWG wire to both sides of the 150A breaker.
- d. Torque breaker M6 studs to 50 in-lb (5.65 Nm)

5. Re-install negative battery cables to chassis batteries and torque to 11 foot pounds.