



SIB 63 03 25

2025-06-06

DELIVERY STOP: LOW BEAM HEADLIGHT ADJUSTMENT

This Service Information Bulletin (Revision 1) replaces SI B63 03 25 **dated June 2025**.

What's New:

- Title updated
- Model information updated
- Affected vehicles updated
- Situation updated
- Correction added
- Procedure added
- Parts Information added
- Claim Information added

<input checked="" type="checkbox"/>	THIS REPAIR IS MOBILE FRIENDLY
<input type="checkbox"/>	THIS REPAIR IS REMOTE SOFTWARE UPGRADE (RSU) FRIENDLY

MODEL

E-Series	Model Description	Production Date	Affected Option Code
G45	X3 Sports Activity Vehicle	July 24, 2024 – April 28, 2025	552 (Full LED Lights with Cornering Lights) or 3MF (M Shadowline Lights)

AFFECTED VEHICLES

- Vehicles which require this campaign to be completed will show it as “Open” when checked either in AIR, AWP, Campaign Summary, or Warranty Vehicle Inquiry.
- Please make sure you check your dealer inventory as soon as possible. You can see a list of affected vehicles in Inventory Campaign Details (ICD) under ROSS.
- For centers that qualify, this repair is eligible to be performed via Mobile Assistance.

SITUATION

BMW AG has issued a Delivery Stop (effective June 2, 2025) on certain Model Year 2025 BMW vehicles that were produced between June 24, 2024, and April 28, 2025.

Do not deliver to a customer, a New, Certified Pre-Owned or Used vehicle subject to a Delivery Stop, until the vehicle is repaired. Do not use or sell replacement equipment/parts subject to a Delivery Stop.

G45 vehicles built with option codes 552 (Full LED Lights with Cornering Lights), or 3MF (M Shadowline Lights), the headlights' height setting might not be adjusted correctly.

CORRECTION

Adjust the low beam height setting of the headlights.

PROCEDURE

1. Prepare the vehicle and the headlight adjustment device following repair instructions listed in ISTA/AIR **63 10 PRF (Test requirements for headlights vertical aim adjustment)**.

Note: The height adjustment must be carried out on both headlights.

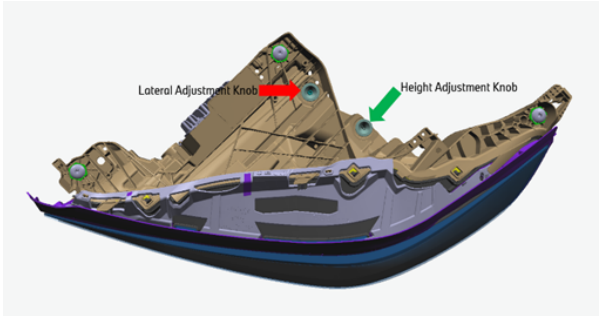
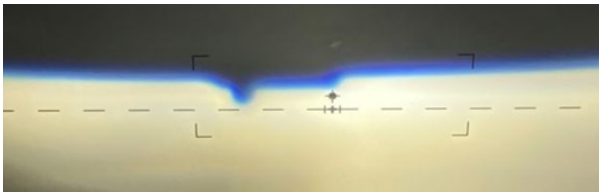


Photo is showing two adjusting knobs but **ONLY** the height adjustment knob (green arrow) needs to be adjusted.

Note: There is no need to adjust the lateral adjustment knob (red arrow).

Driver's side unit shown, looking downwards.



2. Remove the locking pin inside the height adjusting knob and rotate the height adjustment knob counterclockwise (CCW) so that the light pattern of the headlight is higher than the horizontal target line.



3. Rotate the height knob clockwise (CW) so that the light pattern of the headlight lines up with the horizontal target line.

4. Rotate the height adjusting knob CCW by approx. $\frac{3}{4}$ of a turn. The headlight pattern must not move when performing this step.

Note: If the adjusting knob has been turned too far and the light pattern changes, repeat steps 2-4.

5. Once completed, the locking pin can be reinstalled back into the height adjusting knob and repair can be verified.

PARTS INFORMATION

No parts are required.

CLAIM INFORMATION

Reimbursement for this Action will be via normal claim entry utilizing the applicable work package information below.

Repair Code:	0063040200	---
--------------	------------	-----

Below are the special flat rate labor operation code choices for this action.

Completion before the first vehicle delivery to a customer (New in-stock/No in-service date), or the vehicle is already in the workshop for another reason and/or repair.

Work Package	Labor Operation	Description (Plusposition)	Labor Allowance
# 1	0078681	Adjust (both) low beam headlights (Includes checking/correcting tire pressures)	3 FRU

Or:

The vehicle arrives at your center and this Action shows open (No other Main work will be performed or claimed during this workshop visit).

Work Package	Labor Operation	Description (Main work)	Labor Allowance
# 2	0078151	Adjust (both) low beam headlights (Includes checking/correcting tire pressures)	5 FRU

Only one of the flat rate labor operation codes listed above can be used for claim submission and reimbursement. Also, only one Main work flat rate labor operation code can be claimed per workshop visit.

Claim Repair Comments

Reference the SIB number, the issue (briefly), and the work package (WP) number performed in the technician’s RO notes, and in the claim comments (For example: B63 03 25 Adjust Low Beam Headlights WP 1), unless otherwise required by State law.

FEEDBACK REGARDING THIS BULLETIN

Technical Feedback	To submit feedback for the technical topic of this bulletin: Submit your feedback in the rating box at the top of this bulletin
Warranty Feedback	To submit feedback for the CLAIMS section of this bulletin: Submit an IDS ticket to the Warranty Department, or use the chat available in the Warranty Documentation Portal
Parts Feedback	To submit feedback for the PARTS section of this bulletin: Submit an IDS ticket to the Parts Department

