



SIB 61 09 25

WINDSHIELD WIPING QUALITY IS REDUCED OR A POPPING /  
CLICKING SOUND IS OBSERVED

2025-06-06

<input type="checkbox"/>	THIS REPAIR IS MOBILE FRIENDLY
<input type="checkbox"/>	THIS REPAIR IS REMOTE SOFTWARE UPGRADE (RSU) FRIENDLY

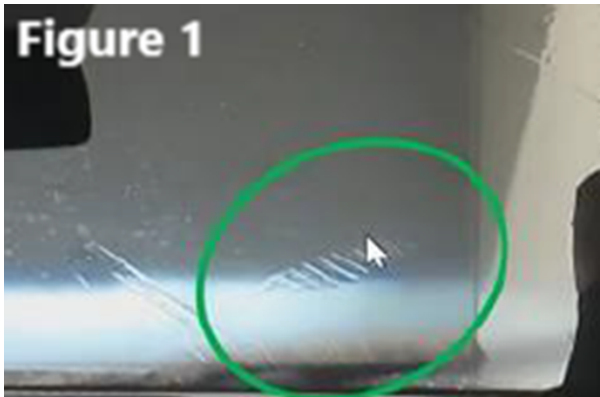
MODEL

E-Series	Model Description	Production Date
G45	X3 Sports Activity Vehicle	October 15, 2024 – January 28, 2025

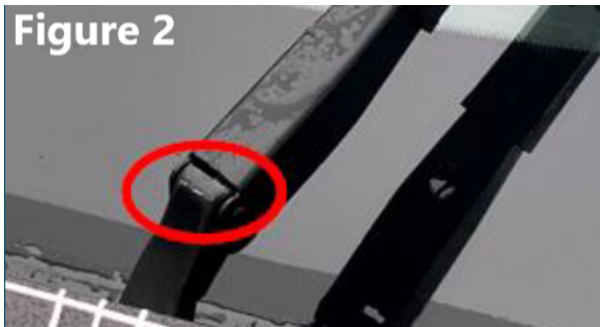
SITUATION

Windshield wiping quality has decreased or the wiper arm is contacting the hood. (example's below)

Wiping quality degrades with increasing speed (Figure 1).



Wiper arm contacts the hood, customer may hear a “clicking” noise (Figure 2).



CAUSE

The wiper console may be cracked and/or broken due to the manufacturing process.

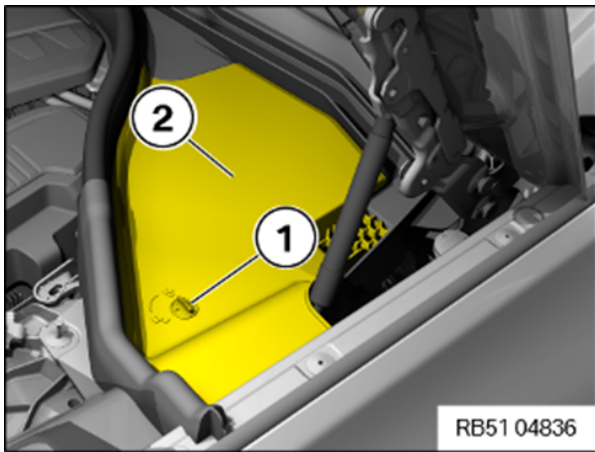
CORRECTION

Use a borescope or mirror to inspect the wiper console for cracks and/or broken mounts.

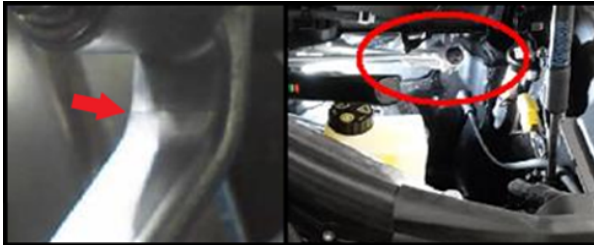
PROCEDURE

Diagnosis and repair as follows.

1. Remove the cover of the engine compartment at the left rear (driver's side).



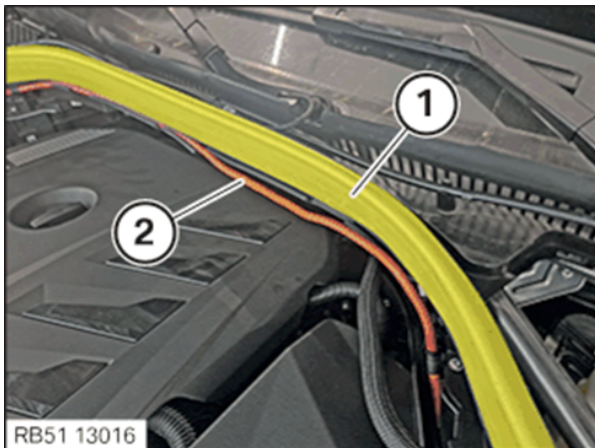
2. Using a borescope or mirror, check whether the wiper console is broken or cracked around the rotary housing. (driver side)



3. Has cracking or breakage been observed during the inspection?

**Yes:** Replace the wiper console following repair instructions “**Replacing the console for the windshield wiper system complete with motor**” 61 61 271 | REP-REP-P-6161271-G45 - V.3.

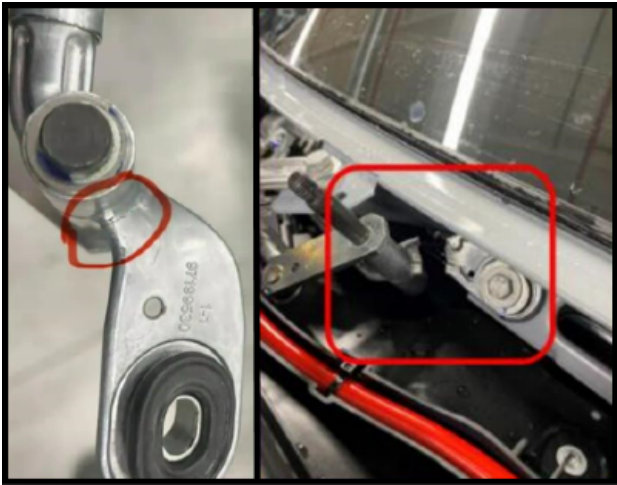
**No:** Perform further inspection of the wiper console for cracks and/or breakage at the upper mounting brace near the center of the bulkhead.



4. Remove the bulkhead seal following repair instruction “**Removing and installing/replacing the rear hood seal**” 51 76 030 | REP-REP-P-5176030-G45 - V.3.

5. Use a plastic wedge to create a gap between the windshield panel cover for inspection.

6. Using a borescope or mirror, inspect the wiper console around the upper mounting brace at the center of the bulkhead.



7. If damage or cracks are discovered, replace the wiper console following repair instructions  
**“Replacing the console for the windshield wiper system complete with motor”** 61 61 271 | REP-REP-P-6161271-G45 - V.3.

8. Inspect the area’s where the wiper arm may have contacted the hood. Repair any paint damage caused by a wiper defect.

PARTS INFORMATION

When applicable, to determine the part number that applies to the specific vehicle being repaired, enter the VIN/chassis number into either ETK or AIR, this will consider the specific equipment and/or options that are fitted to the vehicle.

Part Number	Description	Quantity
61 61 5 A29 187	Linkage for wiper system with motor (LL)	1

Additionally, other materials and small parts that are not specified above, such as fluids, lubricants, one-time use screws, nuts, and seals, which must be replaced or installed (according to the ISTA repair instructions/ETK/AIR), are to be selected from the Electronic Parts Catalog, and/or other approved BMW Group’s resources according to the respective vehicle type. Invoiced these items separately under the Repair Code listed in this bulletin.

CLAIM INFORMATION

Covered under the terms of the BMW New Vehicle Limited Warranty for Passenger Cars and Light Trucks, or the BMW Certified Pre-Owned Program as described below.

Repair Code:	6161041300	Wiper linkage windscreen Broken
--------------	------------	---------------------------------

Obtain the flat rate unit (FRU) allowances for the following that applies.

Diagnosis

Labor Operation	Description	Labor Allowance
51 00 001	Using a borescope or mirror, visually inspect the wiper console <b>(Left rear /driver’s side engine compartment cover removed, see below)</b> . (Work time)	WT FRU
Or:		
00 58 500*	Diagnosis Worktime Flat Rate	2 FRU

And, with the diagnosis above that applies your center together with the work below that was performed.

Repair

Labor Operation	Description	Labor Allowance
61 61 271	Replacing console for windshield wiper system complete with motor <b>(Includes removing and installing the left rear /driver’s side engine compartment cover)</b> (Main work)	As applicable

Or:		
61 61 771	Replacing console for windshield wiper system complete with motor <b>(Includes removing and installing the left rear /driver’s side engine compartment cover)</b> (Plusposition)	As applicable

If you are using a Main labor operation code for another repair, then use the Plusposition labor operation code 61 61 771 instead of 61 61 271.

Work time labor operation codes 51 00 001 and 00 58 500 are not considered Main labor operations.

(\*) Based on which one applies to your center, please refer to **SI B01 01 20** or **B01 07 20** for the applicable procedure for documenting, claiming, and explaining, on the RO and in the claim comments, your diagnosis work time (WT), job/repair work time (WT), and the vehicle repairs your center performed, unless otherwise required by State law.

**BMW Group’s AIR Application Resource for Flat Rate Labor Operation Codes**

To obtain the corresponding flat rate unit (FRU) allowance information from the BMW Group AIR application resource, start by entering the Chassis Number (last seven (7) characters of the VIN), and click on the “Search” icon. If the “Vehicle Selection” window displays two or more model possible vehicle choices, select the applicable Model, or enter the full VIN (17 characters) instead to proceed. Click on the “Flat Rate Units” button and enter a flat rate labor operation code number “without spaces” in the field to the right, click on the “Search” icon to display the corresponding listing of “Flat rate unit group details” that are available and their corresponding FRU allowances.

**FEEDBACK REGARDING THIS BULLETIN**

Technical Feedback	To submit feedback for the technical topic of this bulletin: Submit your feedback in the rating box at the top of this bulletin
Warranty Feedback	To submit feedback for the CLAIMS section of this bulletin: Submit an IDS ticket to the Warranty Department, or use the chat available in the Warranty Documentation Portal
Parts Feedback	To submit feedback for the PARTS section of this bulletin: Submit an IDS ticket to the Parts Department

