



GROUP	MODEL
Voluntary Emissions Service Campaign	2025MY Carnival (KA4)
NUMBER	DATE
SC333	June 2025

VOLUNTARY EMISSIONS SERVICE CAMPAIGN

SUBJECT: ENGINE CONTROL MODULE LOGIC IMPROVEMENT (SC333)

This bulletin provides information to upgrade the 'Engine Control Module' (ECM) system software on certain 2025MY Carnival (KA4) vehicles equipped with 3.5L GDI Lambda III engines produced from April 15, 2024 through November 27, 2024. The subject vehicles may have been produced with engine calibration that may cause the vehicle to release air pollutants that exceed Federal and California standards and cause the illumination of the Malfunction Indicator Lamp (MIL) with DTC P046100. These standards were established to protect the public health and welfare from the dangers of air pollutants. To ensure compliance with emissions regulations, follow the procedure outlined in this publication to apply the improved logic to the 'Engine' system using the KDS ECU Upgrade function as described in this bulletin. Refer to [SST081](#) for software upgrade instructions using Kia Diagnostic System (KDS) tablet and VCI-II and confirm the Upgrade Event Number/Name, ROM ID Information, and Manual Mode passwords (if applicable) on the applicable vehicle. Before conducting the procedure, verify that the vehicle is included in the list of affected VINs.

DTC Description:

P046100: Fuel Level Sensor 'A' Circuit Range/Performance



NOTICE

Repair status for a VIN is provided on KDealer+ (Service → Warranty Coverage → Warranty Coverage Inquiry → Campaign Information). Not completed Recall / Service Action reports are available on KDealer+ (Consumer Affairs → Not Completed Recall → Recall VIN → Select Report), which includes a list of affected vehicles.

Refer to [TSB SST081](#) for instructions to upgrade the 'ECM' system:

To correct this condition, the specified system module should be reprogrammed using KDS as described in this bulletin in 'Auto Mode'.

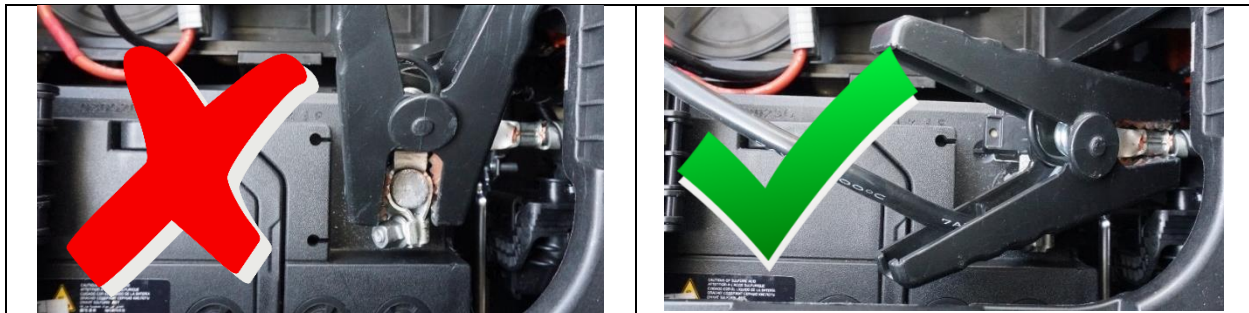
Upgrade Event Name

806.KA4 PE Lambda 3.5GDI DTC Judgment Logic Improvement (P0461)


NOTICE

- Confirm a fully charged battery (12.3 volts or higher is necessary) is used or utilize a fully charged jump starter box connected to the battery.
- **Ensure the KDS GDS is sufficiently charged at 60% or higher prior to reflash.**
- All ECU upgrades must be performed with the ignition set to the 'ON' position unless otherwise stated.
- **Damaged VCI II units should not be used and promptly replaced.**
- Be careful not to disconnect the VCI-II connected to the vehicle during the ECU upgrade procedure.
- **DO NOT start the engine during ECU upgrade.**
- DO NOT turn the ignition key 'OFF' or interrupt the power supply during ECU upgrade.
- **When the ECU upgrade is completed, turn the ignition 'OFF' and wait 10 seconds before starting the engine.**
- ONLY use approved ECU upgrade software designated for the correct application.

[Connect the negative \(-\) terminal to the battery as shown below.](#)




NOTICE

Before attempting an ECU upgrade on any Kia model, make sure to first determine whether the applicable model is equipped with an immobilizer  security system. Failure to follow proper procedures may cause the PCM to become inoperative after the upgrade and any claims associated with this repair may be subject to chargeback.

SUBJECT:

ENGINE CONTROL MODULE LOGIC IMPROVEMENT (SC333)**ROM ID Information Table:****Upgrade Event #806****ⓘ IMPORTANT**

It is recommended to ALWAYS check the Electronic Parts Catalog (EPC) to locate the ECU Part Number respective to Auto/Manual Mode ROM IDs. DO NOT reference the parts label affixed to the ECU.

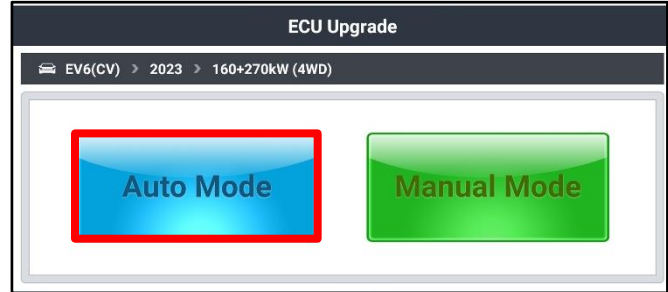
Comment	System	IMMO 	ECU P/No.	ROM ID	
				Previous	New
Without Sunroof	ECM	Yes - O	39110 3N825	GKA45NS0HQ000M03	GKA45NS0HQ100M03
With Sunroof			39110 3N835	GKA45NS0HQ000ML3	GKA45NS0HQ100ML3

To verify the vehicle is affected, be sure to check the Calibration Identification of the vehicle's ECM ROM ID and reference the Information Table as necessary.

Software Information:

The required software must be installed by selecting the **'Auto Mode'** ECU Upgrade option.

Note: In some case, the 'Manual Mode' installation option may be required **ONLY** if the 'Auto Mode' function fails or is otherwise noted above.



NOTICE

If the automatic upgrade fails, turn the ignition 'OFF' for about 10 seconds then place it back in the 'ON' position to reset the control unit BEFORE performing the manual upgrade.

'Manual Mode' passwords.

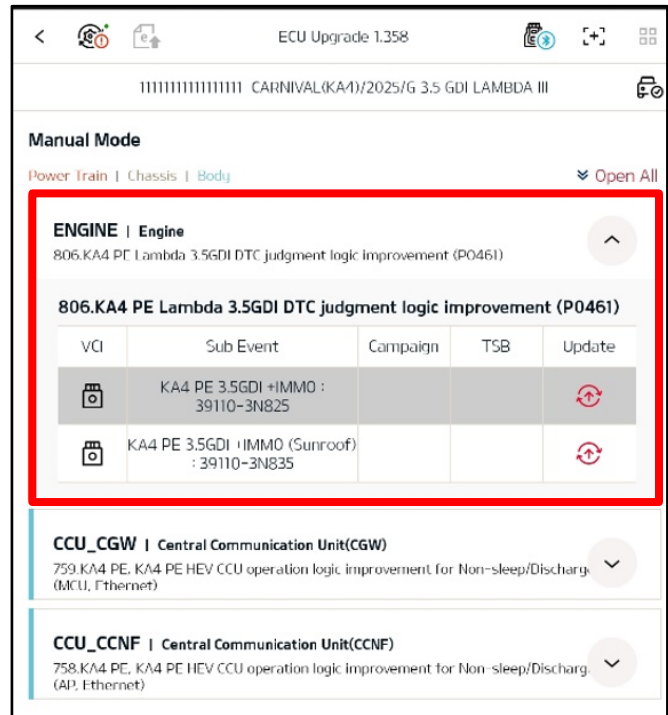
Menu	Password
KA4 PE 3.5GDI +IMMO : 39110-3N825	0119
KA4 PE 3.5GDI +IMMO (Sunroof) : 39110-3N835	5383

UPGRADE EVENT:

Select the applicable **'Engine'** system module and the Event Group.

- **806.KA4 PE Lambda 3.5GDI DTC Judgment Logic Improvement (P0461)**

Verify the affected vehicle Calibration Identification of the applicable ECU ROM ID and reference the Information Table on page 3 as necessary.



SUBJECT:

ENGINE CONTROL MODULE LOGIC IMPROVEMENT (SC333)

ATTENTION: THE PROOF OF CORRECTION CARD AND CAMPAIGN COMPLETION LABEL ARE RESTRICTED ONLY TO DEALERS IN THE FOLLOWING STATES:

California, Connecticut, Delaware, Massachusetts, Maine, Maryland, New Jersey, New York, Oregon, Pennsylvania, Rhode Island, Vermont, and Washington. See Parts Information below to order the Proof of Correction Card and Campaign Completion Label from the PDC.

VEHICLE EMISSION RECALL - PROOF OF CORRECTION CARD

A Vehicle Emission Recall - Proof of Correction card must be filled out for all vehicles registered in California, Connecticut, Delaware, Massachusetts, Maine, Maryland, New Jersey, New York, Oregon, Pennsylvania, Rhode Island, Vermont, and Washington. Residents of these states, who own an affected vehicle, will be required to possess a Vehicle Emission Recall - Proof of Correction card as evidence of voluntary service campaign completion, when they apply for vehicle registration renewal.

WHAT TO DO WITH THE CARD:

The Vehicle Emission Recall - Proof of Correction card must be completed by the Dealership's Service Manager using a permanent ink pen. A fine point pen is recommended. When filling in the information, copy the information directly from the vehicle, not the repair order. **ALL INFORMATION MUST BE PRINTED AND NEAT.**

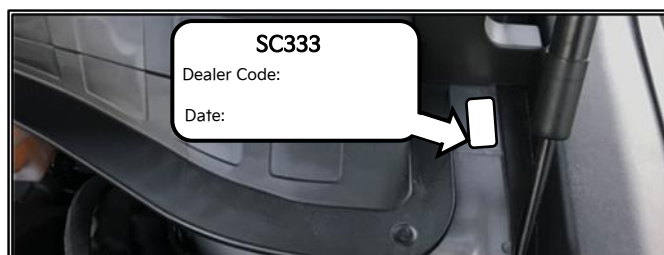
NOTE: DO NOT COMPLETE THE CARD UNLESS THE SERVICE CAMPAIGN WORK IS COMPLETED.

The copy of the card shown below indicates the areas to be filled in. Each area must be filled in. The completed card should be given to the owner of the vehicle upon completion of the Campaign and placement of the Campaign Completion Label outlined below.

FILLING OUT AND APPLYING THE CAMPAIGN COMPLETION LABEL (CA and S.177 STATES ONLY):

The dealer must fill in the Dealer Code and Date information fields on the Campaign Completion Label. Once complete, affix the campaign completion label under the hood of the vehicle, as shown below.

CA and S.177 States Only: Apply SC333 Campaign Completion Label onto the body in the area next to the shock tower, as shown. **NOTE: Be sure to clean the mounting surface to ensure proper label adhesion.**




SUBJECT:

ENGINE CONTROL MODULE LOGIC IMPROVEMENT (SC333)

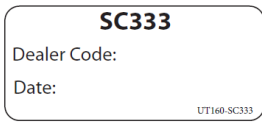

AFFECTED VEHICLE RANGE:

Model	Production Date Range
Carnival (KA4)	April 15, 2024 to November 27, 2024

REQUIRED TOOL:

Tool Name	Part Number	Figure	Comments
Kia Diagnostic System (KDS)	N/A		VCI

REQUIRED PARTS:

Part Name	Part Number	Figure	Qty.
Campaign Completion Label	UT160 SC333		1
Vehicle Emissions Recall Proof of Correction Card	UT161 SC333		1

WARRANTY INFORMATION:

N Code: N99 C Code: C99

Claim Type	Causal P/N	Qty.	Repair Description	Labor Op Code	Op Time	Replacement P/N	Qty.
R	39110 3N825	0	(SC333) Engine Control Module Logic Improvement	240245R0	0.3 M/H	N/A	0

Note: Refer to [Warranty Bulletin 2025-16](#) for claim submission procedures. For Substitute Transportation policy, please refer to Service Policy and Procedures Manual (SPPM) 6.11 "Kia Substitute Transportation".

NOTICE

VIN inquiry data for this repair is provided for tracking purposes only. Kia retailers should reference **SC333** when accessing the KDealer+ system.

