

Field campaign

Topic	Software Update BJB and HV ECUs Continental GT/GTC/Flying Spur 25MY (SC25/10)
Market area	Bentley: worldwide (2WBE),China 796 VW Import Comp. Ltd (Vico), Beijing (6796)
Brand	Bentley
Transaction No.	2077696/5
Campaign number	ED40
Note	
Type	
US code	

Vehicle data

25MY Continental GT/GTC/Flying Spur

Sales types

Type	MY	Brand	Designation	Engine code	Gearbox code	Final drive code
Z23*	2025	E		*	*	*
Z24*	2025	E		*	*	*
Z32*	2025	E		*	*	*

Documents

Document name
master.xml
ed40vinlist.pdf

Notes



Technical background

Software updates must be applied to update the vehicles Baseline Integration Level (BiL).

The software update corrects the following Diagnostic trouble codes (DTCs):

- P060100: High Voltage Battery (Address 008C) Internal Control Module Memory Checksum Error
- P057F00: Battery "A" State of Charge Performance, B11B300 Igniter for high voltage battery interrupt
- P0A0B00: High Voltage System Interlock Circuit Performance (HVIL).

CAUTION

If Campaign ED18 is marked as an outstanding Campaign in ElsaPro, it must be completed before starting this update

Remedy

The instructions within the 'Work' section **must** be conducted to completion.

Customer notification

Please ensure all applicable instructions are conducted at the nearest opportunity.

Warranty

SVM Update Time

Claim type: 790 or 710

Service number: ED40

Damage code: 0066

Criteria:01

Labour Operation Code: 01 51 00 00

Time: As per ODIS log (Must not exceed 200TU)

Additional Time Allowance

A 100TU allowance may be claimed only if a SVM update fails to complete successfully. This is intended to cover additional diagnostic or recovery work directly resulting from the failed update. It must not be used for unrelated delays or issues.

ODIS logs must be attached to a DISS ticket for evidence of failure. Claims without valid documentation will be rejected. Warranty Adjudicators will review associated ODIS logs and DISS queries to determine actual software update time.

Parts

Not Applicable

Parts supply

Not Applicable

Parts despatch control

Not Applicable

Repair instructions



Technical background

Software updates must be applied to update the vehicles Baseline Integration Level (BiL).

The software update corrects the following Diagnostic trouble codes (DTCs):

- P060100: High Voltage Battery (Address 008C) Internal Control Module Memory Checksum Error

- P057F00: Battery "A" State of Charge Performance, B11B300 Igniter for high voltage battery interrupt
- P0A0B00: High Voltage System Interlock Circuit Performance (HVIL).

CAUTION

If Campaign ED18 is marked as an outstanding Campaign in ElsaPro, it must be completed before starting this update

Check

Check if the vehicle is already listed as repaired in "Repair history" (in ElsaPro).

Please also refer to the "Identification" section and check if a paint identification mark is evident in the vehicle.

If the vehicle is not shown in ElsaPro as repaired, and the identification mark is not present, please conduct the instructions within the 'Work' section to completion

Parts

Not Applicable

Work

CAUTION

The Bentley ODIS-S Brand Version **MUST** be at least 2.35.2 (or higher).

CAUTION

Before conducting the onward instructions, the operative **MUST** recheck the communication method in ODIS and ensure that DoIP is selected before proceeding. Within ODIS-S, perform the following:

- On the right hand side, select the "Admin" tile (Within 'Operating modes')
- Select "GFF sequence" (Within 'General information' section)
- Under the "Selection of Communication path" drop-down menu, select "Only permit DoIP communication".

CAUTION

DO NOT, UNDER ANY CIRCUMSTANCES, ATTEMPT TO CONDUCT THE SOFTWARE UPDATE VIA THE CAN NETWORK. ONLY DoIP SHOULD BE USED WHEN PERFORMING THE SVM UPDATE.

CAUTION

You **MUST ONLY** use the Diagnosis Interface VAS 6154 (WiFi Diagnostic Tool) in USB OPERATION or the CABLE-CONNECTED VAS 5055 for the reprogramming (updating) of the control units.

- If neither of these units are available, the VAS 5054 (A) may be used in USB MODE.
- **DO NOT** under any circumstances use a Bluetooth connection to conduct the reprogramming (updating) of any control units.

Battery Charger

CAUTION

ONLY Chargers that meet the approved specification on the Mandatory Equipment List (available on the Bentley Hub) **MUST** be used.

- The charger must be set to a mode where a **MINIMUM** of 90a is supplied to the battery during the process. Typically, this is known as 'Power Supply Mode' or 'DIAG+ Mode'.
- A voltage of exactly 14.8v must be set and maintained throughout the process.
- Please refer to the manual to ensure that these requirements are met before beginning any SVM update

Preparation Before Update

WARNING

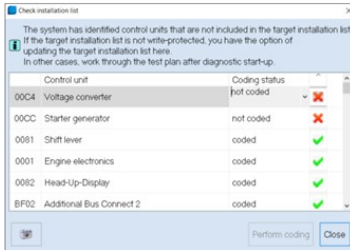
Hybrid Vehicles use a High Voltage System and therefore **MUST ONLY** be worked on by suitable personnel

CAUTION

During the update, switch off all unnecessary consumers. For example, ventilation, seat heaters, interior illumination, exterior lights ect.

Conduct a full guided fault find of the vehicle.

If a 'Check Installation List' pop-up appears, select 'close' (see below image)



Referring to TPI 2075920, address any unknown faults **BEFORE** conducting any of the below updates.

Ensure that the correct battery charger is connected to the vehicle. – Refer to the "Battery Charger" Section above.

Obtaining flash files for ODIS-S

NOTICE

The Bentley ODIS-S Brand Version 2.35.2 does not require Hotfix. Only loading of the local flash files.

Visit <https://bentley.atheer.io/> and log in with the following case-sensitive account details.

- Username: bilupdate
- Password: Bentley123!

NOTICE

If you are already logged into your retailer account, you will need to logout first. To do this, click on your account initials (bottom left corner) and click "Sign Out".

After logging in, using the navigation bar on the left hand side, click on the 'conversations' tab



Next, click the conversation named "ED40 Campaign".

NOTICE

You **MUST NOT** leave the conversation, remove users from the conversation, delete the conversation or alter the conversation in any way. The **ONLY** action you are permitted to perform is download the applicable file required for this campaign.

In this conversation, you will find a file named "ED40_Local_Flash_Files".

Left click the file name and download the folder.

After left-clicking the files to download them, the download may take circa 5-10 minutes, do not interrupt this process. You may need to wait a short period (internet speed dependent) for the files to download.

During/before the download commences, there may be a warning about a "pop-up" being blocked which will prevent the file from downloading, ensure to select option "Allow Pop-Ups from this website" to download the file. Wording may differ depending on web browser.

Locate the download file and extract it. To do this, right click the file, click "7 zip" and then "Extract here"

After successfully downloading the file, please logout of the account.

Downloading Flash Files for ODIS-S

From the content within the 'ED40_Local_Flash_Files' download, copy the content of the folder into your root c:/temp drive on your ODIS device.

- FL_4M0915249AN_0201_UPD0004T0005_V001_S.odx
- FL_4M0915249AM_0207_ABJB7A60590M1_V001_S.odx
- FL_4M0915231AH_0204_XHX15EV0421M6_V001_S.odx

High Voltage Shutdown

WARNING

De-energise the high-voltage system via ODIS-S. Refer to ElsaPro, Repair Group 93 – "De-energising high-voltage system" to do so.

1. After de-energisation, Refer to ElsaPro Repair Group 70 'Boot carpet – To remove and fit'. Remove the boot floor and gain access to the earth cable from the 12v battery negative and the body in white (This access will be required later in the test plan).
2. Navigate to 'Special functions' and select 'SVM – Pre 372BIL5201 Hotfix Routines', then 'Perform test'.
3. Switch to 'DoIP' when prompted.
- 4a. For **Continental Flying Spur Vehicles** Select '**1**) BMC/BJB 204/207 Update Repair' and follow the on-screen instructions.
- 4b. For **Continental GT/GTC Vehicles** Select '**8**) BMC/BJB 204/207 Update Repair' and follow the on-screen instructions.
 - When the tester attempts to flash '008C - Battery regulation control module' you may receive a message informing you that the pre-conditions have not been met. Select 'done/continue'.
 - On the following screen (shown below) select option 2 to attempt to flash the ECU – this should allow the '008C - Battery regulation control module' to flash successfully.

NOTICE

If the flash fails, perform the below actions.

1. Exit the test.
2. Allow the car to sleep for 5 minutes.
 - a. Turn off the ignition.

- b. Remove all equipment from the car (Diagnostic tester/dongle, battery charger, keys).
 - c. Close all doors, windows, bonnet and boot lid.
 - d. Lock the vehicle to perform a CAN-BUS sleep (wait 5 minutes).
3. Clear DTCs from '008C - Battery regulation control module'.
- 3a. To do this, right click on control unit 008C, click Guided Functions and then click 'Clear Fault Memory'.
4. Return to 'Special functions' and run the test plan 'SVM – Pre 372BIL5201 Hotfix Routines'.
5. Within this test plan, select option 5 (008C BCM - Restore Communications with BJB) and run until completion.
6. Once the test has been completed, right click on control unit 008C and select guided functions. Then, read ECU Identification and ensure that the 06D0 (Battery Junction Box) appears as a subsystem within the read identification test plan.
7. Continue to the next SVM update.

SVM Code Input

WARNING

Re-energise the high-voltage system via ODIS-S. Refer to ElsaPro, Repair Group 93 – “Re-energising high-voltage system” to do so.

1. After re-energising the High Voltage System, navigate to the “Special Functions” tab in ODIS-S.
2. Navigate to ‘SVM – Code Input’ and enter the SVM Code.
 - a. If the vehicle is any variant of a Continental GT or GTC, enter the SVM Code: “372ED40COM01”.
 - b. If the vehicle is any variant of a Continental Flying Spur, enter the SVM Code: “373ED40COM01”.
3. On the next screen, ensure that the SVM code displayed is correct.
4. You will be shown the communication type. **This MUST be set to “DoIP”.**
 - a. If “DoIP” is not selected, select option 3 until the communication type is set to “DoIP”.
5. After ensuring DoIP is selected, and a suitable battery charger is connected, select Option 1 – “Yes”.
 - a. From here, all control modules will be interrogated and the SVM action will take place.
6. Ensure that the diagnostic device remains connected for the duration of the update.
7. Follow all on-screen prompts until the program ends.
 - a. If you have a prompt stating there is no communication established with 00CC, select done/continue.
8. Follow the on-screen instructions to completion.
9. If you are presented with this screen (Fig 3) at the end of the update, the update was successful. Please continue to step 11.

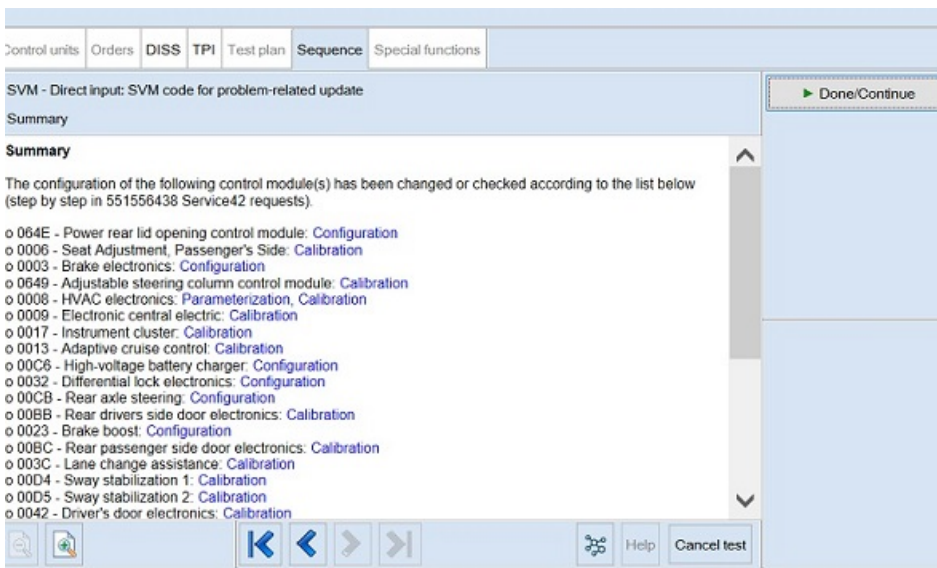


Fig 3

10. If you encounter any errors during the update, please raise a FULL TECHNICAL DISS query.

- a. Customer Statement: "ED40 Support"
- b. Workshop Findings: Give a summary of the error encountered and ensure that the latest Guided Fault Finding log is submitted online.

11. After successful completion of the update, perform the following.

- a. Turn off the ignition.
- b. Remove all equipment from the car (Diagnostic tester/dongle, battery charger, keys).
- c. Close all doors, windows, bonnet and boot lid.
- d. Lock the vehicle to perform a CAN-BUS sleep (wait 15 minutes).

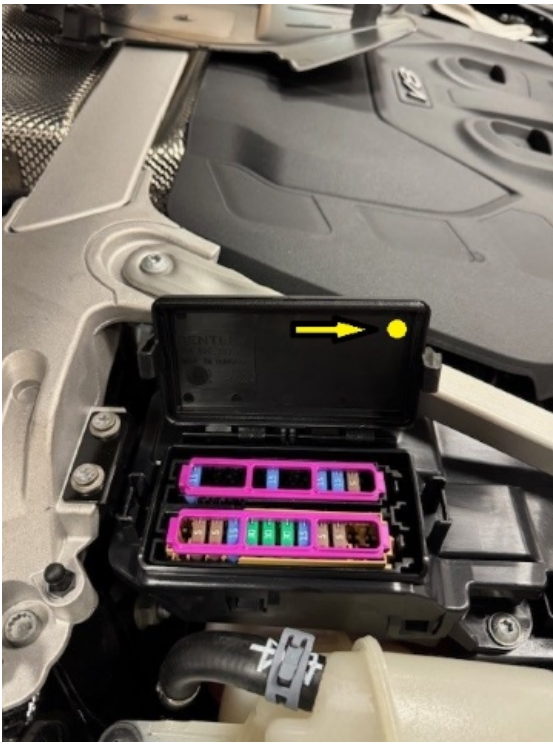
12. After 15 minutes, unlock and open the driver's door. Turn on the ignition, re-connect the battery charger and diagnostic dongle.

13. Re-run guided fault finding and clear DTCs. If any faults are present, refer to TPI 2075920. If any other faults are present, please raise a full DISS query with a full GFF log uploaded online stating the error encountered.

Identification

Once the applicable action has been conducted, the operative must submit a warranty claim as this will show the service campaign action as complete within Elsa Pro "Repair history".

You must also add a yellow paint mark to the underside of the Fusebox cover as per the picture below.



[▲ Repair instructions](#) [▲ Notes](#)