

Field campaign

Topic	Software Update BJB and HV ECUs Continental GT/GTC/Flying Spur 25MY (SC25/10)
Market area	Bentley: worldwide (2WBE),China 796 VW Import Comp. Ltd (Vico), Beijing (6796)
Brand	Bentley
Transaction No.	2077696/4
Campaign number	ED40
Note	
Type	
US code	

Vehicle data

25MY Continental GT/GTC/Flying Spur

Sales types

Type	MY	Brand	Designation	Engine code	Gearbox code	Final drive code
Z23*	2025	E		*	*	*
Z24*	2025	E		*	*	*
Z32*	2025	E		*	*	*

Documents

Document name
master.xml
ed40vinlist.pdf

Notes



Technical background

Software updates must be applied to update the vehicles Baseline Integration Level (BiL).

The software update corrects the following Diagnostic trouble codes (DTCs):

- P060100: High Voltage Battery (Address 008C) Internal Control Module Memory Checksum Error
- P057F00: Battery "A" State of Charge Performance, B11B300 Igniter for high voltage battery interrupt
- P0A0B00: High Voltage System Interlock Circuit Performance (HVIL).

CAUTION

If Campaign ED18 is marked as an outstanding Campaign in ElsaPro, it must be completed before starting this update

Remedy

The instructions within the 'Work' section **must** be conducted to completion.

Customer notification

Please ensure all applicable instructions are conducted at the nearest opportunity.

Warranty

SVM Update Time

Claim type: 790 or 710

Service number: ED40

Damage code: 0066

Criteria:01

Labour Operation Code: 01 51 00 00

Time: As per ODIS log (Must not exceed 200TU)

Additional Time Allowance

A 100TU allowance may be claimed only if a SVM update fails to complete successfully. This is intended to cover additional diagnostic or recovery work directly resulting from the failed update. It must not be used for unrelated delays or issues.

ODIS logs must be attached to a DISS ticket for evidence of failure. Claims without valid documentation will be rejected. Warranty Adjudicators will review associated ODIS logs and DISS queries to determine actual software update time.

Parts

Not Applicable

Parts supply

Not Applicable

Parts despatch control

Not Applicable

Repair instructions



Technical background

Software updates must be applied to update the vehicles Baseline Integration Level (BiL).

The software update corrects the following Diagnostic trouble codes (DTCs):

- P060100: High Voltage Battery (Address 008C) Internal Control Module Memory Checksum Error

- P057F00: Battery "A" State of Charge Performance, B11B300 Igniter for high voltage battery interrupt
- P0A0B00: High Voltage System Interlock Circuit Performance (HVIL).

CAUTION

If Campaign ED18 is marked as an outstanding Campaign in ElsaPro, it must be completed before starting this update

Check

Check if the vehicle is already listed as repaired in "Repair history" (in ElsaPro).

Please also refer to the "Identification" section and check if a paint identification mark is evident in the vehicle.

If the vehicle is not shown in ElsaPro as repaired, and the identification mark is not present, please conduct the instructions within the 'Work' section to completion

Parts

Not Applicable

Work

CAUTION

The Bentley ODIS-S Brand Version **MUST** be at least 2.35.2 (or higher).

CAUTION

Before conducting the onward instructions, the operative **MUST** recheck the communication method in ODIS and ensure that DoIP is selected before proceeding. Within ODIS-S, perform the following:

- On the right hand side, select the "Admin" tile (Within 'Operating modes')
- Select "GFF sequence" (Within 'General information' section)
- Under the "Selection of Communication path" drop-down menu, select "Only permit DoIP communication".

CAUTION

DO NOT, UNDER ANY CIRCUMSTANCES, ATTEMPT TO CONDUCT THE SOFTWARE UPDATE VIA THE CAN NETWORK. ONLY DoIP SHOULD BE USED WHEN PERFORMING THE SVM UPDATE.

CAUTION

You **MUST ONLY** use the Diagnosis Interface VAS 6154 (WiFi Diagnostic Tool) in USB OPERATION or the CABLE-CONNECTED VAS 5055 for the reprogramming (updating) of the control units.

- If neither of these units are available, the VAS 5054 (A) may be used in USB MODE.
- **DO NOT** under any circumstances use a Bluetooth connection to conduct the reprogramming (updating) of any control units.

Battery Charger

CAUTION

ONLY Chargers that meet the approved specification on the Mandatory Equipment List (available on the Bentley Hub) **MUST** be used.

- The charger must be set to a mode where a **MINIMUM** of 90a is supplied to the battery during the process. Typically, this is known as 'Power Supply Mode' or 'DIAG+ Mode'.
- A voltage of exactly 14.8v must be set and maintained throughout the process.
- Please refer to the manual to ensure that these requirements are met before beginning any SVM update

Preparation Before Update

WARNING

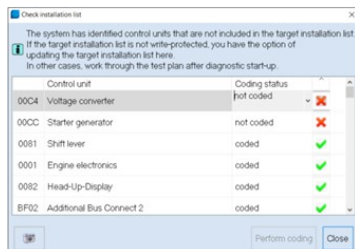
Hybrid Vehicles use a High Voltage System and therefore **MUST ONLY** be worked on by suitable personnel

CAUTION

During the update, switch off all unnecessary consumers. For example, ventilation, seat heaters, interior illumination, exterior lights ect.

Conduct a full guided fault find of the vehicle.

If a 'Check Installation List' pop-up appears, select 'close' (see below image)



Referring to TPI 2075920, address any unknown faults **BEFORE** conducting any of the below updates.

Ensure that the correct battery charger is connected to the vehicle. – Refer to the "Battery Charger" Section above.

Obtaining flash files for ODIS-S

NOTICE

The Bentley ODIS-S Brand Version 2.35.2 does not require Hotfix. Only loading of the local flash files.

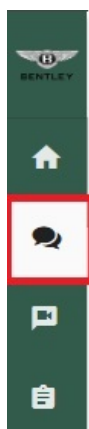
Visit <https://bentley.atheer.io/> and log in with the following case-sensitive account details.

- Username: bilupdate
- Password: Bentley123!

NOTICE

If you are already logged into your retailer account, you will need to logout first. To do this, click on your account initials (bottom left corner) and click "Sign Out".

After logging in, using the navigation bar on the left hand side, click on the 'conversations' tab



Next, click the conversation named "ED40 Campaign".

NOTICE

You **MUST NOT** leave the conversation, remove users from the conversation, delete the conversation or alter the conversation in any way. The **ONLY** action you are permitted to perform is download the applicable file required for this campaign.

In this conversation, you will find a file named "ED40_Local_Flash_Files".

Left click the file name and download the folder.

After left-clicking the files to download them, the download may take circa 5-10 minutes, do not interrupt this process. You may need to wait a short period (internet speed dependent) for the files to download.

During/before the download commences, there may be a warning about a "pop-up" being blocked which will prevent the file from downloading, ensure to select option "Allow Pop-Ups from this website" to download the file. Wording may differ depending on web browser.

Locate the download file and extract it. To do this, right click the file, click "7 zip" and then "Extract here"


After successfully downloading the file, please logout of the account.

Downloading Flash Files for ODIS-S

From the content within the 'ED40_Local_Flash_Files' download, copy the content of the folder into your root c:/temp drive on your ODIS device.

- FL_4M0915249AN_0201_UPD0004T0005_V001_S.odx
- FL_4M0915249AM_0207_ABJB7A60590M1_V001_S.odx
- FL_4M0915231AH_0204_XHX15EV0421M6_V001_S.odx

High Voltage Shutdown

 WARNING
De-energise the high-voltage system via ODIS-S. Refer to ElsaPro, Repair Group 93 – "De-energising high-voltage system" to do so.

1. After de-energisation, Refer to ElsaPro Repair Group 70 'Boot carpet – To remove and fit'. Remove the boot floor and gain access to the earth cable from the 12v battery negative and the body in white (This access will be required later in the test plan).

2. Navigate to 'Special functions' and select 'SVM – Pre 372BIL5201 Hotfix Routines', then 'Perform test'.

3. Switch to 'DoIP' when prompted.

4a. For **Continental Flying Spur Vehicles** Select '**1**) BMC/BJB 204/207 Update Repair' and follow the on-screen instructions.

4b. For **Continental GT/GTC Vehicles** Select '**8**) BMC/BJB 204/207 Update Repair' and follow the on-screen instructions.

- When the tester attempts to flash '008C - Battery regulation control module' you may receive a message informing you that the pre-conditions have not been met. Select 'done/continue'.
- On the following screen (shown below) select option 2 to attempt to flash the ECU – this should allow the '008C - Battery regulation control module' to flash successfully.

 NOTICE
If the flash fails, perform the below actions.

1. Exit the test.

2. Allow the car to sleep for 5 minutes.

a. Turn off the ignition.

- b. Remove all equipment from the car (Diagnostic tester/dongle, battery charger, keys).
 - c. Close all doors, windows, bonnet and boot lid.
 - d. Lock the vehicle to perform a CAN-BUS sleep (wait 5 minutes).
3. Clear DTCs from '008C - Battery regulation control module'.
- 3a. To do this, right click on control unit 008C, click Guided Functions and then click 'Clear Fault Memory'.
4. Return to 'Special functions' and run the test plan 'SVM – Pre 372BIL5201 Hotfix Routines'.
5. Within this test plan, select option 5 (008C BCM - Restore Communications with BJB) and run until completion.
6. Once the test has been completed, right click on control unit 008C and select guided functions. Then, read ECU Identification and ensure that the 06D0 (Battery Junction Box) appears as a subsystem within the read identification test plan.
7. Continue to the next SVM update.

SVM Code Input

WARNING

Re-energise the high-voltage system via ODIS-S. Refer to ElsaPro, Repair Group 93 – “Re-energising high-voltage system” to do so.

1. After re-energising the High Voltage System, navigate to the “Special Functions” tab in ODIS-S.
2. Navigate to ‘SVM – Code Input’ and enter the SVM Code.
 - a. If the vehicle is any variant of a Continental GT or GTC, enter the SVM Code: “372ED40COM01”.
 - b. If the vehicle is any variant of a Continental Flying Spur, enter the SVM Code: “373ED40COM01”.
3. On the next screen, ensure that the SVM code displayed is correct.
4. You will be shown the communication type. **This MUST be set to “DoIP”.**
 - a. If “DoIP” is not selected, select option 3 until the communication type is set to “DoIP”.
5. After ensuring DoIP is selected, and a suitable battery charger is connected, select Option 1 – “Yes”.
 - a. From here, all control modules will be interrogated and the SVM action will take place.
6. Ensure that the diagnostic device remains connected for the duration of the update.
7. Follow all on-screen prompts until the program ends.
 - a. If you have a prompt stating there is no communication established with 00CC, select done/continue.
8. Follow the on-screen instructions to completion.
9. If you are presented with this screen (Fig 3) at the end of the update, the update was successful. Please continue to step 11.

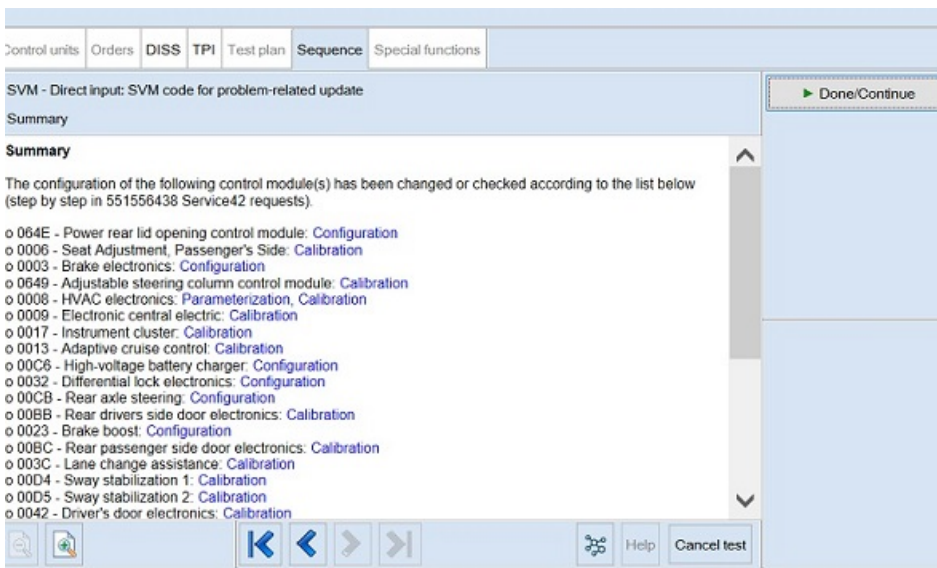


Fig 3

10. If you encounter any errors during the update, please raise a FULL TECHNICAL DISS query.

- a. Customer Statement: "ED40 Support"
- b. Workshop Findings: Give a summary of the error encountered and ensure that the latest Guided Fault Finding log is submitted online.

11. After successful completion of the update, perform the following.

- a. Turn off the ignition.
- b. Remove all equipment from the car (Diagnostic tester/dongle, battery charger, keys).
- c. Close all doors, windows, bonnet and boot lid.
- d. Lock the vehicle to perform a CAN-BUS sleep (wait 15 minutes).

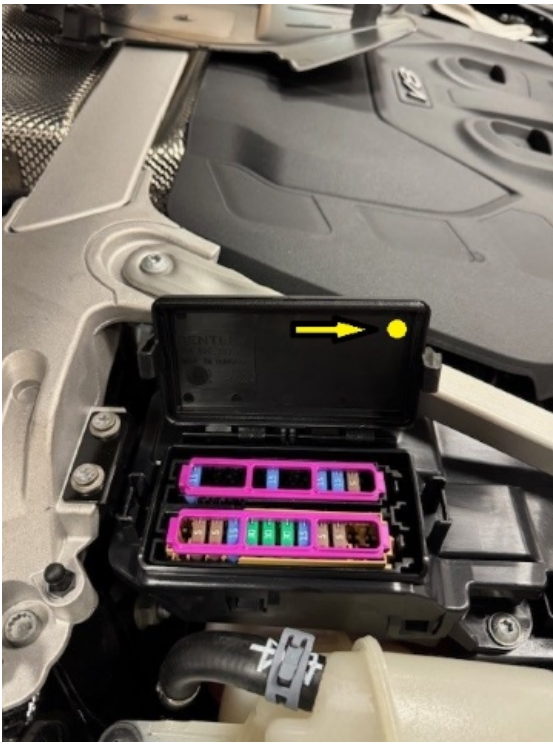
12. After 15 minutes, unlock and open the driver's door. Turn on the ignition, re-connect the battery charger and diagnostic dongle.

13. Re-run guided fault finding and clear DTCs. If any faults are present, refer to TPI 2075920. If any other faults are present, please raise a full DISS query with a full GFF log uploaded online stating the error encountered.

Identification

Once the applicable action has been conducted, the operative must submit a warranty claim as this will show the service campaign action as complete within Elsa Pro "Repair history".

You must also add a yellow paint mark to the underside of the Fusebox cover as per the picture below.



[▲ Repair instructions](#) [▲ Notes](#)

SCBBR6ZG2SC022409	SCBBR6ZG1SC022479	SCBBR6ZG7SC022440
SCBBR6ZG9SC022388	SCBBR6ZG4SC022511	SCBBR6ZG8SC022379
SCBCR2ZG4SC022408	SCBBR6ZG5SC022453	SCBBR6ZG9SC022620
SCBCR2ZG6SC022376	SCBBR6ZG7SC022504	SCBCR2ZG0SC022616
SCBDR4ZG2SC022391	SCBBR6ZGXSC022531	SCBCR2ZG6SC022541
SCBDR4ZG7SC022385	SCBCR2ZG2SC022505	SCBCR2ZG6SC022619
SCBCR2ZG0SC022406	SCBDR4ZG4SC022456	SCBDR4ZG2SC022617
SCBCR2ZG3SC022402	SCBDR4ZG6SC022426	SCBDR4ZG3SC022612
SCBDR4ZG5SC022403	SCBBR6ZG0SC022540	SCBDR4ZG7SC022502
SCBBR6ZG1SC022384	SCBBR6ZG6SC022509	SCBBR6ZG1SC022594
SCBBR6ZG3SC022466	SCBBR6ZG9SC022455	SCBCR2ZG4SC022523
SCBBR6ZG4SC022377	SCBBR6ZGXSC022514	SCBBR6ZG0SC022649
SCBBR6ZG7SC022485	SCBCR2ZG3SC022495	SCBBR6ZG1SC022644
SCBBR6ZGXSC022416	SCBCR2ZG4SC022568	SCBBR6ZG6SC022574
SCBDR4ZG3SC022447	SCBDR4ZG5SC022532	SCBBR6ZG8SC022429
SCBBR6ZG1SC022496	SCBBR6ZG8SC022558	SCBBR6ZGXSC022609
SCBBR6ZG4SC022427	SCBBR6ZGXSC022464	SCBCP2ZG3SC022678
SCBBR6ZG5SC022436	SCBBR6ZGXSC022562	SCBCR2ZG0SC022650
SCBBR6ZG8SC022396	SCBCR2ZG0SC022566	SCBCR2ZG1SC022625
SCBBR6ZG9SC022438	SCBCR2ZG1SC022575	SCBCR2ZG2SC022553
SCBBR6ZG9SC022472	SCBCR2ZG2SC022519	SCBCR2ZGXSC022641
SCBCR2ZG0SC022387	SCBCR2ZG2SC022570	SCBDR4ZG4SC022652
SCBCR2ZG8SC022458	SCBCR2ZG3SC022593	SCBDR4ZG7SC022600
SCBCR2ZG8SC022475	SCBCR2ZG7SC022550	SCBDR4ZG7SC022662
SCBCR2ZG9SC022484	SCBDR4ZG5SC022577	SCBBR6ZG0SC022697
SCBDR4ZG3SC022500	SCBBR6ZG2SC022524	SCBBR6ZG4SC022640
SCBDR4ZG4SC022411	SCBBR6ZG2SC022605	SCBBR6ZG5SC022422
SCBDR4ZG5SC022482	SCBBR6ZG3SC022631	SCBBR6ZG6SC022638
SCBDR4ZGXSC022459	SCBBR6ZG5SC022520	SCBCP2ZG9SC022698
SCBDR4ZGXSC022462	SCBBR6ZG5SC022551	SCBCR2ZG5SC022689
SCBBR6ZG1SC022448	SCBBR6ZG5SC022601	SCBDP4ZG7SC022683

SCBDR4ZG5SC022627	SCBBR6ZG8SC022723	SCBDP4ZG9SC022894
SCBDR4ZG5SC022658	SCBCP2ZG9SC022684	SCBDR4ZG2SC022567
SCBDR4ZG8SC022668	SCBCR2ZG0SC022812	SCBDR4ZG4SC022893
SCBBP6ZG1SC022682	SCBCR2ZG1SC022608	SCBDR4ZG9SC022579
SCBBR6ZG3SC022628	SCBCR2ZG8SC022816	SCBBP6ZG1SC022911
SCBBR6ZG4SC022671	SCBCR2ZGXSC022767	SCBBP6ZG8SC022775
SCBBR6ZG6SC022669	SCBCR2ZGXSC022798	SCBBP6ZGXSC022907
SCBBR6ZG9SC022701	SCBDP4ZG1SC022758	SCBBR6ZG1SC022885
SCBBR6ZGXSC022657	SCBDP4ZG9SC022782	SCBBR6ZG2SC022829
SCBCR2ZG5SC022739	SCBBP6ZG6SC022855	SCBBR6ZG6SC022817
SCBCR2ZG7SC022659	SCBBR6ZG2SC022801	SCBBR6ZG8SC022849
SCBCR2ZG7SC022709	SCBBR6ZG4SC022847	SCBCP2ZG3SC022888
SCBCR2ZG8SC022637	SCBBR6ZG5SC022842	SCBCP2ZG5SC022908
SCBDP4ZG1SC022677	SCBBR6ZGXSC022450	SCBDP4ZG6SC022836
SCBDR4ZG1SC022656	SCBCR2ZG6SC022538	SCBDR4ZGXSC022929
SCBBP6ZG1SC022763	SCBDP4ZG4SC022866	SCBBP6ZG9SC022994
SCBBR6ZG4SC022766	SCBDP4ZG9SC022846	SCBBP6ZGXSC022891
SCBBR6ZG7SC022695	SCBDR4ZG2SC022598	SCBBR6ZG4SC022914
SCBCP2ZG0SC022749	SCBDR4ZG3SC022724	SCBBR6ZG5SC022887
SCBCR2ZG4SC022733	SCBBP6ZG2SC022898	SCBCP2ZG8SC022949
SCBCR2ZG7SC022774	SCBBP6ZG6SC022726	SCBCR2ZG1SC022947
SCBDR4ZG1SC022768	SCBBP6ZG8SC022873	SCBCR2ZG7SC022533
SCBDR4ZG3SC022528	SCBBR6ZG1SC022806	SCBCR2ZG7SC022953
SCBDR4ZG4SC022747	SCBBR6ZG4SC022833	SCBCR2ZGXSC022932
SCBBP6ZG5SC022703	SCBBR6ZG9SC022827	SCBBR6ZG0SC023008
SCBBR6ZG2SC022748	SCBBR6ZGXSC022819	SCBBR6ZG9SC022925
SCBCR2ZG0SC022793	SCBCP2ZG5SC022830	SCBBR6ZGXSC022867
SCBDR4ZG6SC022765	SCBCR2ZG5SC022854	SCBCR2ZG1SC022995
SCBBP6ZG6SC022760	SCBCR2ZG6SC022877	SCBDP4ZG0SC022945
SCBBR6ZG0SC022795	SCBCR2ZGXSC022879	SCBDR4ZG5SC022126
SCBBR6ZG0SC022831	SCBDP4ZG8SC022899	SCBBR6ZG1SC023017

SCBBR6ZG2SC022880	SCBDR4ZG8SC023108	SCBCR2ZGXSC022753
SCBBR6ZG2SC022930	SCBBP6ZG0SC022799	SCBDP4ZG6SC023212
SCBBR6ZG2SC023012	SCBBP6ZG1SC023122	SCBBP6ZG5SC022734
SCBBR6ZG5SC022792	SCBBP6ZG2SC023114	SCBBP6ZG7SC022699
SCBCP2ZG0SC022993	SCBCP2ZG2SC023126	SCBBP6ZGXSC023264
SCBCP2ZG6SC023002	SCBCR2ZG1SC022852	SCBBR6ZG0SC023106
SCBCR2ZG9SC023022	SCBDP4ZGXSC023133	SCBBR6ZG0SC023283
SCBDP4ZG0SC022802	SCBCP2ZG9SC023138	SCBBR6ZG1SC022997
SCBDR4ZG0SC022941	SCBCP2ZGXSC023178	SCBBR6ZG7SC023281
SCBDR4ZG4SC022926	SCBCR2ZG7SC023147	SCBBR6ZG7SC023295
SCBDR4ZG9SC022999	SCBDP4ZG4SC023175	SCBCP2ZG1SC023263
SCBBP6ZG4SC023020	SCBBP6ZG8SC022680	SCBCP2ZG3SC023247
SCBBP6ZG9SC023014	SCBBR6ZG6SC023191	SCBDR4ZG0SC023250
SCBCR2ZG8SC022928	SCBDR4ZG3SC023100	SCBDR4ZG6SC023267
SCBBR6ZG2SC022717	SCBBP6ZG8SC023179	SCBBP6ZG6SC023312
SCBBR6ZG4SC023058	SCBBR6ZG3SC023228	SCBBR6ZG1SC023261
SCBBR6ZG5SC022839	SCBBR6ZG4SC023030	SCBBR6ZG9SC023301
SCBCP2ZG3SC023068	SCBCP2ZG3SC022745	SCBCR2ZG2SC023296
SCBCP2ZG6SC022822	SCBCR2ZG9SC023229	SCBBP6ZG0SC023337
SCBCR2ZG9SC023084	SCBDP4ZG1SC023215	SCBBP6ZG5SC023270
SCBDP4ZG4SC023029	SCBDP4ZG6SC022738	SCBBP6ZG5SC023317
SCBDR4ZG2SC023072	SCBDP4ZGXSC022449	SCBBP6ZG6SC023410
SCBBP6ZG1SC023055	SCBDR4ZG4SC023185	SCBBR6ZG0SC023042
SCBBP6ZGXSC023023	SCBDR4ZG8SC023187	SCBBR6ZG0SC023381
SCBBR6ZG5SC023067	SCBDR4ZGXSC023143	SCBBR6ZG3SC023214
SCBCP2ZG0SC023075	SCBBP6ZG2SC023243	SCBBR6ZG4SC023352
SCBCP2ZG9SC023107	SCBBR6ZG6SC023224	SCBBR6ZG6SC023210
SCBCR2ZG6SC023141	SCBCP2ZG6SC023260	SCBBR6ZG7SC023197
SCBCR2ZGXSC023109	SCBCP2ZG7SC023221	SCBBR6ZG9SC023363
SCBDP4ZG3SC023071	SCBCR2ZG4SC023123	SCBBR6ZGXSC023372
SCBDR4ZG1SC023063	SCBCR2ZG8SC023268	SCBCP2ZG7SC023428

SCBCP2ZG8SC023311	SCBCR13S9SC022508	SCBDR33S0SC023076
SCBCP2ZG8SC023356	SCBBF53S1SC022529	SCBBR53S3SC023091
SCBCR2ZG0SC023314	SCBBR53S3SC022569	SCBCF13S7SC023195
SCBCR2ZG1SC023368	SCBCF13SXSC022610	SCBBR53S6SC022940
SCBCR2ZG4SC023235	SCBCF13S7SC022614	SCBDR33S6SC023129
SCBDP4ZG0SC023271	SCBDF33S2SC022486	SCBBR53S2SC023082
SCBDP4ZG2SC023384	SCBDR33S9SC022587	SCBBR53S0SC023274
SCBDP4ZG4SC023404	SCBDR33SXSC022632	SCBCR13S4SC023016
SCBDP4ZG5SC023315	SCBBF53S3SC022581	SCBDF33S1SC022589
SCBDP4ZG5SC023380	SCBCJ13S9SC022435	SCBCF13S7SC023052
SCBDR4ZG0SC023085	SCBDF33S4SC022635	SCBCR13S5SC023364
SCBDR4ZG1SC023421	SCBBR53S6SC022663	SCBCG13S3SC022381
SCBCF13SXSC022378	SCBCR13S6SC022725	SCBCG13S7SC022397
SCBDF33S3SC022383	SCBBR53S4SC022693	SCBBG53S6SC022412
SCBDF33S4SC022375	SCBBR53S9SC022740	SCBBG53SXSC022445
SCBCF13S2SC022424	SCBBR53S6SC022811	SCBCG13S4SC022437
SCBBR53S1SC022425	SCBCR13S8SC022807	SCBBG53S9SC022470
SCBBR53S4SC022404	SCBDR33S1SC022776	SCBCG13S4SC022499
SCBBR53S5SC022394	SCBBF53S1SC022580	SCBCG13S8SC022490
SCBCF13S8SC022461	SCBBF53S5SC022825	SCBCG13S9SC022434
SCBCF13SXSC022414	SCBBF53S2SC022815	SCBBG53S6SC022474
SCBDF33S7SC022452	SCBBF53S6SC022901	SCBBG53S9SC022498
SCBDF33S8SC022489	SCBBR53S7SC022834	SCBBF53S3SC022564
SCBBF53S6SC022476	SCBCR13S4SC022917	SCBBG53S3SC022433
SCBCF13S1SC022530	SCBBR53S0SC022920	SCBBG53S6SC022507
SCBCF13S9SC022467	SCBBR53S2SC022952	SCBBG53S8SC022542
SCBBJ53S6SC022556	SCBBR53S1SC023039	SCBBG53S2SC022584
SCBCF13S1SC022494	SCBBR53S0SC023033	SCBBG53S3SC022576
SCBCR13S4SC022545	SCBCR13S7SC023043	SCBBG53S4SC022571
SCBBR53S0SC022481	SCBBR53S4SC023097	SCBBG53S0SC022552
SCBCF13S1SC022544	SCBBR53S9SC023144	SCBBG53S5SC022613

SCBBG53S2SC022603	SCBBG53S4SC022876	SCBBG53S7SC023276
SCBCG13S0SC022645	SCBBG53S5SC022837	SCBBG53S9SC023053
SCBDF33SXSC022512	SCBBG53S2SC022942	SCBCG13S5SC023225
SCBBG53S1SC022642	SCBBG53S8SC022895	SCBCG13S6SC023217
SCBBG53S5SC022661	SCBBG53S5SC022711	SCBCG13S9SC023244
SCBBG53S8SC022492	SCBBG53SXSC022851	SCBCG13S1SC023318
SCBBG53S8SC022623	SCBCG13S9SC022935	SCBBG53S0SC023426
SCBDG33S0SC022418	SCBBG53S1SC022382	SCBBG53S4SC023266
SCBBG53S0SC022535	SCBBG53S6SC022636	SCBBG53S5SC023390
SCBBG53S6SC022460	SCBBF53SXSC023047	SCBBG53S6SC023401
SCBBG53S6SC022667	SCBBG53S7SC023004	SCBBG53S8SC023156
SCBCF13SXSC022655	SCBBG53S7SC023035	SCBBG53S8SC023335
SCBBG53S0SC022728	SCBBG53S5SC022708	SCBBG53S8SC023366
SCBBG53S1SC022513	SCBBG53SXSC023062	SCBBG53S9SC023165
SCBBG53S8SC022752	SCBCG13S6SC023024	SCBBG53SXSC023417
SCBBG53S9SC022646	SCBCG13S9SC023115	SCBCG13S0SC023441
SCBBG53SXSC022719	SCBCG13S2SC023120	SCBCG13S2SC023408
SCBBG53SXSC022736	SCBCG13S7SC023128	SCBCG13S3SC023305
SCBBG53S5SC022742	SCBCG13S1SC022573	SCBCG13S6SC023282
SCBBG53S9SC022517	SCBBG53S7SC023164	SCBCG13S8SC023073
SCBBG53SXSC022526	SCBBG53S0SC023118	SCBCF13S8SC022380
SCBBG53S0SC022549	SCBBG53S0SC023233	SCBCF13S9SC022405
SCBBG53S2SC022651	SCBBG53S8SC023237	SCBDF33S4SC022389
SCBCG13S4SC022583	SCBCG13S0SC023021	SCBDF33SXSC022395
SCBDG33S3SC022624	SCBCG13S6SC023234	SCBCF13S6SC022393
SCBBG53S2SC022746	SCBBG53S8SC023125	SCBCF13S9SC022419
SCBBG53S4SC022599	SCBCG13S6SC023007	SCBCF13S0SC022454
SCBCG13S9SC022840	SCBDG33SXSC023222	SCBCF13S5SC022417
SCBBG53S2SC022522	SCBBG53S0SC023149	SCBCF13S5SC022465
SCBCG13SXSC022832	SCBBG53S1SC023306	SCBCF13S7SC022421
SCBDG33S3SC022543	SCBBG53S3SC023257	SCBDF33S2SC022441

SCBDF33SXSC022428	SCBDF33S6SC022555	SCBCL13S8SC022761
SCBBF53S1SC022420	SCBCF13S9SC022565	SCBDF33S0SC022731
SCBCF13S1SC022463	SCBDF33S1SC022592	SCBDF33S0SC022762
SCBCF13S1SC022480	SCBBF53S2SC022653	SCBDL33S0SC022771
SCBDF33S2SC022469	SCBCF13S3SC022660	SCBCF13S6SC022720
SCBDF33S3SC022478	SCBCF13S5SC022451	SCBCF13S7SC022743
SCBCF13S0SC022521	SCBCF13S8SC022654	SCBCF13S8SC022783
SCBCF13S1SC022477	SCBDF33S3SC022643	SCBDL33S5SC022779
SCBCF13S1SC022527	SCBDF33S9SC022534	SCBBF53S5SC022730
SCBCF13S5SC022501	SCBBF53S4SC022590	SCBBF53S9SC022777
SCBDF33S0SC022423	SCBBL53S9SC022674	SCBBL53S2SC022676
SCBDF33S4SC022473	SCBCF13S4SC022604	SCBBL53S9SC022786
SCBDF33S7SC022497	SCBCL13S0SC022687	SCBCF13S0SC022809
SCBDF33S8SC022525	SCBCL13S2SC022710	SCBCF13S0SC022826
SCBBF53S5SC022386	SCBBF53S0SC022554	SCBCF13S3SC022741
SCBCF13S2SC022536	SCBBF53S8SC022690	SCBCF13S6SC022622
SCBCF13SXSC022557	SCBCF13S0SC022700	SCBCL13S1SC022729
SCBDF33S3SC022559	SCBCF13S1SC022673	SCBCL13S1SC022794
SCBDF33S7SC022516	SCBCL13S2SC022691	SCBCL13S4SC022790
SCBDF33S8SC022539	SCBCL13S3SC022702	SCBCL13S7SC022735
SCBBF53S3SC022547	SCBDF33S8SC022606	SCBDF33S3SC022755
SCBCF13S0SC022471	SCBDF33SXSC022686	SCBDF33S3SC022805
SCBCF13S0SC022597	SCBDL33S4SC022675	SCBDF33S8SC022797
SCBCF13S6SC022586	SCBBF53S5SC022789	SCBDF33SXSC022784
SCBCF13S9SC022596	SCBBF53S9SC022715	SCBDL33S3SC022814
SCBDF33S9SC022582	SCBCF13S0SC022759	SCBDL33S6SC022788
SCBBF53S0SC022537	SCBCF13S1SC022785	SCBBF53S3SC022757
SCBCF13S0SC022633	SCBCF13S2SC022780	SCBBL53S4SC022744
SCBCF13S7SC022578	SCBCF13S3SC022769	SCBBL53S4SC022808
SCBCF13S9SC022629	SCBCF13S4SC022778	SCBCF13S0SC022857
SCBCF13SXSC022591	SCBCF13SXSC022722	SCBCF13S4SC022439

SCBCF13S45SC022666	SCBDF33S1SC022902	SCBCF13S3SC023050
SCBCF13S45SC022828	SCBBF53S1SC022918	SCBCF13S6SC023057
SCBCF13S55SC022823	SCBBJ53S0SC022732	SCBCL13S0SC023077
SCBCF13S65SC022796	SCBCF13S2SC022939	SCBCF13S0SC023099
SCBCJ13S15SC022672	SCBCF13S5SC023003	SCBCF13S3SC023064
SCBCL13S05SC022818	SCBCF13S6SC022670	SCBCF13S5SC023096
SCBCL13S35SC022859	SCBCF13S6SC023009	SCBCF13S8SC022718
SCBCL13S85SC022713	SCBDF33S2SC022696	SCBCJ13SXSC022413
SCBDF33S55SC022630	SCBDF33S3SC022948	SCBCL13S4SC023101
SCBBF53S75SC022860	SCBDF33S75SC022905	SCBCL13S6SC023049
SCBBL53S75SC022821	SCBDL33S0SC022916	SCBCL13S75SC023092
SCBBL53S85SC022858	SCBDL33S2SC022934	SCBDF33S4SC023087
SCBCF13S25SC022889	SCBCF13S6SC022510	SCBDF33S6SC023060
SCBCF13S85SC022881	SCBCF13S9SC023019	SCBDL33S0SC023113
SCBDF33S55SC022773	SCBCF13S9SC023036	SCBDL33S4SC023051
SCBDF33S75SC022841	SCBCF13SXSC022865	SCBDL33S5SC023110
SCBDL33S95SC022820	SCBCF13SXSC023000	SCBBJ53S6SC023027
SCBBF53S05SC022909	SCBCL13S25SC022996	SCBBL53SXSC022781
SCBBL53S85SC022844	SCBCL13SXSC022874	SCBCF13S15SC023158
SCBCF13S15SC022897	SCBCL13SXSC022938	SCBCF13S25SC023086
SCBCF13S25SC022892	SCBDF33S15SC023015	SCBCF13S95SC023117
SCBCF13S35SC022903	SCBDF33S35SC022870	SCBCJ13S05SC023134
SCBCF13S65SC022913	SCBBL53S55SC022431	SCBCL13S15SC023069
SCBCL13S25SC022884	SCBCF13S85SC023061	SCBCL13S25SC023131
SCBCL13S45SC022921	SCBCJ13S65SC023025	SCBCL13S95SC023112
SCBCL13S75SC022931	SCBCL13S25SC023081	SCBCL13S95SC023157
SCBDF33S85SC022864	SCBCL13S35SC022845	SCBCL13SXSC023166
SCBCF13S75SC022869	SCBCL13SXSC023037	SCBDF33S25SC023105
SCBCF13S95SC022937	SCBCL13SXSC023054	SCBDF33S45SC023137
SCBCL13S65SC022886	SCBDF33S55SC023034	SCBDF33S55SC023048
SCBCL13S65SC022919	SCBDF33SXSC023031	SCBBL53S95SC023162

SCBCF13S1SC023127	SCBDF33S5SC023230	SCBBF53S9SC023413
SCBCL13S0SC023032	SCBDL33S0SC023242	SCBBF53SXSC023341
SCBBF53S5SC022615	SCBDL33S6SC023150	SCBBL53S1SC023169
SCBCF13S0SC023202	SCBBF53SXSC022853	SCBCF13S0SC023362
SCBCF13S5SC023194	SCBBF53SXSC023226	SCBCF13S0SC023393
SCBCF13S8SC023206	SCBCF13S1SC023211	SCBCF13S0SC023412
SCBCL13S1SC023198	SCBCF13S7SC023259	SCBCF13S1SC023399
SCBCL13S3SC022912	SCBBF53S6SC023286	SCBCF13S1SC023435
SCBCL13S4SC023177	SCBBL53S3SC023142	SCBCF13S3SC023159
SCBCL13S9SC023188	SCBBL53S5SC023255	SCBCF13S3SC023291
SCBDF33S6SC023155	SCBBL53S6SC023135	SCBCF13S3SC023338
SCBDF33S8SC023089	SCBCF13S1SC023273	SCBCF13S3SC023386
SCBDF33S8SC023139	SCBCF13S8SC022878	SCBCF13S4SC023302
SCBDF33S9SC023005	SCBCL13S8SC023196	SCBCF13S4SC023316
SCBDF33S9SC023098	SCBCL13S9SC023269	SCBCF13S4SC023350
SCBDL33S6SC023116	SCBDF33S1SC023256	SCBCF13S5SC023373
SCBDL33S6SC023200	SCBDF33S6SC023253	SCBCF13S7SC023388
SCBDL33SXSC023183	SCBDF33S6SC023284	SCBCF13S7SC023455
SCBBF53S3SC023231	SCBDF33S8SC023173	SCBCF13S8SC023416
SCBBL53S6SC022955	SCBDF33S9SC023313	SCBCF13S9SC023294
SCBCF13S2SC023184	SCBDL33S0SC023287	SCBCF13S9SC023473
SCBCF13S4SC023249	SCBDL33S4SC023258	SCBCF13SXSC023353
SCBCF13S6SC022992	SCBBF53S5SC023280	SCBCJ13S6SC023395
SCBCF13S8SC023223	SCBCF13S6SC023026	SCBCL13S0SC023161
SCBCF13S9SC023151	SCBCL13S7SC023304	SCBCL13S5SC023432
SCBCF13SXSC023174	SCBDF33S4SC023297	SCBCL13S7SC023299
SCBCF13SXSC023241	SCBBF53S0SC023199	SCBCL13S8SC023344
SCBCL13S0SC023189	SCBBF53S5SC022856	SCBCL13S8SC023358
SCBCL13S4SC023213	SCBBF53S5SC023070	SCBCL13S8SC023375
SCBCL13S5SC023236	SCBBF53S6SC022946	SCBDF33S1SC023371
SCBCL13S7SC023240	SCBBF53S7SC023359	SCBDF33S2SC023010

SCBDF33S3SC023209	SCBCF1ZG9SC022665	SCBDF33S5SC022546
SCBDF33S3SC023307	SCBCH13S0SC022772	SCBCF13S4SC022487
SCBDF33S5SC023292	SCBCF13SXSC022803	SCBDF33SXSC022493
SCBDF33S7SC023391	SCBBF5ZG7SC022862	SCBCF13S9SC022548
SCBDF33S9SC023439	SCBCF1ZG1SC022871	SCBDF33S5SC022563
SCBDL33S3SC023400	SCBCF1ZG6SC022770	SCBDF33S6SC022572
SCBDL33S4SC023289	SCBBF5ZG2SC022607	SCBBF53S0SC022618
SCBDL33S6SC023357	SCBCJ13S0SC022923	SCBBL53S3SC022721
SCBDL33S6SC023374	SCBBF5ZGXSC022936	SCBBL53S9SC022688
SCBDL33S6SC023407	SCBCF13S9SC022954	SCBCF13S2SC022648
SCBDL33SXSC023443	SCBCF1ZG2SC023088	SCBDL33S1SC022679
SCBCL13S1SC023038	SCBBF53S4SC023111	SCBCF13S9SC022694
SCBBL53S8SC022875	SCBBF5ZG2SC023093	SCBCL13S4SC022756
SCBDL33SXSC023300	SCBBF5ZG5SC022407	SCBDL33S3SC022716
SCBCJ13S2SC022390	SCBCF1ZG3SC023083	SCBCF13S6SC022443
SCBBF5ZG9SC022457	SCBDF3ZG8SC022415	SCBCL13S3SC022764
SCBBF5ZGXSC022483	SCBDJ33S8SC022491	SCBCL13S8SC022727
SCBDJ3ZG9SC022518	SCBCF1ZG0SC023168	SCBDF33S0SC022647
SCBBF5ZG9SC022488	SCBCF1ZG1SC023146	SCBDF33S0SC022714
SCBCF1ZG0SC022442	SCBCF1ZG4SC023190	SCBDF33S4SC022585
SCBCJ13S6SC022506	SCBBF5ZG5SC023248	SCBBL53S7SC022804
SCBBF5ZG2SC022588	SCBBF5ZG7SC023218	SCBCL13S0SC022737
SCBCF1ZG7SC022602	SCBCF1ZG4SC022430	SCBCL13S1SC022813
SCBBF53SXSC022626	SCBDJ3ZG0SC023265	SCBCL13S4SC022787
SCBBF5ZG4SC022611	SCBBF53S0SC022392	SCBDL33S5SC022751
SCBDF3ZG3SC022595	SCBCF13S2SC022410	SCBCL13S0SC022835
SCBCF1ZG9SC022634	SCBDF33S1SC022432	SCBCL13SXSC022681
SCBBF5ZG0SC022685	SCBCF13S0SC022468	SCBDL33S6SC022791
SCBBF5ZG2SC022560	SCBCF13S5SC022515	SCBDL33S6SC022824
SCBCH13S4SC022712	SCBCF13S1SC022561	SCBBF53S7SC022664
SCBDF3ZG8SC022639	SCBCF13S9SC022503	SCBCL13S7SC022850

SCBBL53SXSC022750	SCBCL13S1SC023136	SCBCF13S7SC023245
SCBCF13S0SC022843	SCBCL13S3SC023090	SCBCL13S5SC023219
SCBCL13S0SC022883	SCBCL13S7SC023044	SCBBF53S6SC023160
SCBCL13S1SC022861	SCBCL13S9SC023059	SCBBL53S2SC023293
SCBCL13S6SC022838	SCBDL33S2SC023095	SCBBL53S6SC023216
SCBDL33S4SC022868	SCBBL53S7SC023001	SCBCF13S2SC023279
SCBDL33S6SC022810	SCBCF13S6SC022863	SCBCL13S4SC023342
SCBBL53S1SC022927	SCBCL13S1SC023119	SCBBL53S3SC023383
SCBBL53S5SC022882	SCBCL13S2SC023145	SCBBL53S4SC023392
SCBCL13S7SC022900	SCBCL13S4SC023163	SCBBL53SXSC023333
SCBCL13S8SC022890	SCBCL13S8SC023103	SCBCF13S0SC023278
SCBCL13SXSC022924	SCBCL13SXSC023152	SCBCF13S1SC023080
SCBDL33S6SC022872	SCBDL33S5SC023074	SCBCF13S6SC023382
SCBCL13S0SC022950	SCBDL33S5SC023124	SCBCL13S1SC023461
SCBCL13S8SC022906	SCBBF53S0SC023171	SCBCL13S5SC023379
SCBBL53S7SC022933	SCBCL13S0SC023192	SCBCL13S7SC023397
SCBCF13S6SC022944	SCBCL13S1SC023170	SCBCL13S8SC023361
SCBCL13SXSC023006	SCBCL13S1SC023203	SCBCL13S9SC023367
SCBDL33SXSC022910	SCBCL13S6SC023066	SCBDL33S2SC023310
SCBBF53S9SC023041	SCBCL13S9SC023207	SCBDL33S5SC023351
SCBCF13SXSC023028	SCBDF33S7SC023181	SCBDL33S5SC023396
SCBCL13S6SC022998	SCBDL33S1SC023167	SCBDL33S6SC023262
SCBCL13S7SC023013	SCBDL33S9SC022896	SCBDL33S6SC023343
SCBDL33S2SC022951	SCBBL53S9SC023193	SCBDL33S7SC023433
SCBCL13S0SC022446	SCBCF13S6SC023172	SCBDL33S8SC023246
SCBCL13S0SC023046	SCBCL13S1SC023251	SCBDL33S8SC023277
SCBCL13S3SC023056	SCBCL13S3SC023154	
SCBCL13S4SC023065	SCBCL13S7SC023254	
SCBCL13S6SC023018	SCBCL13S8SC023201	
SCBDF33S0SC023040	SCBDL33S4SC023227	
SCBCF13S5SC023132	SCBBL53S7SC023239	