

Technical Service Bulletin

Topic	Steering Knuckle Replacements Continental GT/GTC 12MY - 18MY
Market area	Bentley: worldwide (2WBE),China 796 VW Import Comp. Ltd (Vico), Beijing (6796)
Brand	Bentley
Transaction No.	2077205/1
Level	EH
Status	Released for publishing
Release date	May 12, 2025

New customer code

Object of complaint	Complaint type	Position
chassis -> steering, steering assist	component, automotive fluids	

Vehicle data

Continental GT/GTC

Sales types

Type	MY	Brand	Designation	Engine code	Gearbox code	Final drive code
393*	2012	E		*	*	*
393*	2013	E		*	*	*
393*	2014	E		*	*	*
393*	2015	E		*	*	*
393*	2016	E		*	*	*
393*	2017	E		*	*	*
394*	2012	E		*	*	*
394*	2013	E		*	*	*
394*	2014	E		*	*	*
394*	2015	E		*	*	*
394*	2016	E		*	*	*
394*	2017	E		*	*	*
394*	2018	E		*	*	*

Documents

Document name
master.xml

.....

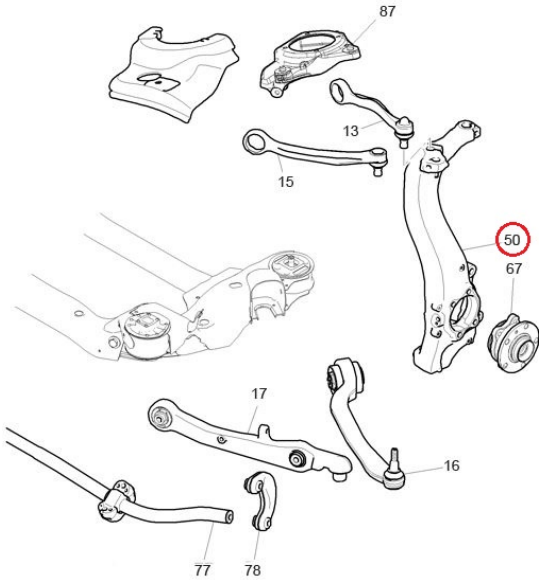
Condition

Previous level steering knuckle parts are no longer available.

Technical Background

In the event of a steering knuckle change requirement. Parts initially need to be changed as a pair for both sides of the vehicle in place of the no longer available parts.

Once recorded in vehicle repair history that both sides have been replaced with new level parts. Only then can individual sides can be changed in the future if required.



Production Solution

Not applicable (New 'A' part used in production)

Service

Carry out an inspection of the vehicles repair history. If a steering knuckle has been previously replaced, you must ensure that the correct specification was fitted to both sides of the vehicle. Only then can individual sides can be replaced.

If old level parts are currently fitted. Replace **both** steering knuckles with the new level part numbers.

In the event of a steering knuckle replacement, refer to ElsaPro Repair group 40 'Wheel bearing housings replace' for working instructions.

Warranty

Warranty Type – 110 or 910

Damage Service Number – 40 50

Damage Code – 00 12

Labour

Time to replace 1x wheel bearing housings / Steering knuckle

Labour Operation Code – 40 50 55 00

Time – 130 TU

Time to replace 2x wheel bearing housings / Steering knuckle

Labour Operation Code – 40 50 56 00

Time – 250 TU

Required Parts and Tools

Parts no longer available

3W0407245

3W0407246

Available parts

3W0407245A

3W0407246A

The part numbers listed within this TPI are correct at the time of publication, always refer to the ETKA parts catalogue