

Field campaign

Topic	Software Update BJB and HV ECUs Continental GT/GTC/Flying Spur 25MY (SC25/10)
Market area	Bentley: worldwide (2WBE),China 796 VW Import Comp. Ltd (Vico), Beijing (6796)
Brand	Bentley
Transaction No.	2077696/3
Campaign number	ED40
Note	
Type	
US code	

Vehicle data

25MY Continental GT/GTC/Flying Spur

Sales types

Type	MY	Brand	Designation	Engine code	Gearbox code	Final drive code
Z23*	2025	E		*	*	*
Z24*	2025	E		*	*	*
Z32*	2025	E		*	*	*

Documents

Document name
master.xml
ed40vinlist.pdf

Notes



Technical background

Software updates must be applied to update the vehicles Baseline Integration Level (BiL).

The software update corrects the following Diagnostic trouble codes (DTCs):

- P060100: High Voltage Battery (Address 008C) Internal Control Module Memory Checksum Error
- P057F00: Battery "A" State of Charge Performance, B11B300 Igniter for high voltage battery interrupt
- P0A0B00: High Voltage System Interlock Circuit Performance (HVIL).

Remedy

The instructions within the 'Work' section **must** be conducted to completion.

Customer notification

Please ensure all applicable instructions are conducted at the nearest opportunity.

Warranty

SVM Update Time

Claim type: 790 or 710

Service number: ED40

Damage code: 0066

Criteria:01

Labour Operation Code: 01 51 00 00

Time: As per ODIS log (Must not exceed 200TU)

Parts

Not Applicable

Parts supply

Not Applicable

Parts despatch control

Not Applicable

Repair instructions



Technical background

Software updates must be applied to update the vehicles Baseline Integration Level (BiL).

The software update corrects the following Diagnostic trouble codes (DTCs):

- P060100: High Voltage Battery (Address 008C) Internal Control Module Memory Checksum Error
- P057F00: Battery "A" State of Charge Performance, B11B300 Igniter for high voltage battery interrupt
- P0A0B00: High Voltage System Interlock Circuit Performance (HVIL).

Check

Check if the vehicle is already listed as repaired in "Repair history" (in ElsaPro).

Please also refer to the "Identification" section and check if a paint identification mark is evident in the vehicle.

If the vehicle is not shown in ElsaPro as repaired, and the identification mark is not present, please conduct the instructions within the 'Work' section to completion

Parts

Not Applicable

Work

CAUTION

The Bentley ODIS-S Brand Version **MUST** be at least 2.35.2 (or higher).

CAUTION

Before conducting the onward instructions, the operative **MUST** recheck the communication method in ODIS and ensure that DoIP is selected before proceeding. Within ODIS-S, perform the following:

- On the right hand side, select the "Admin" tile (Within 'Operating modes')
- Select "GFF sequence" (Within 'General information' section)
- Under the "Selection of Communication path" drop-down menu, select "Only permit DoIP communication".

CAUTION

DO NOT, UNDER ANY CIRCUMSTANCES, ATTEMPT TO CONDUCT THE SOFTWARE UPDATE VIA THE CAN NETWORK. ONLY DoIP SHOULD BE USED WHEN PERFORMING THE SVM UPDATE.

CAUTION

You **MUST ONLY** use the Diagnosis Interface VAS 6154 (WiFi Diagnostic Tool) in USB OPERATION or the CABLE-CONNECTED VAS 5055 for the reprogramming (updating) of the control units.

- If neither of these units are available, the VAS 5054 (A) may be used in USB MODE.
- **DO NOT** under any circumstances use a Bluetooth connection to conduct the reprogramming (updating) of any control units.

Battery Charger

CAUTION

ONLY Chargers that meet the approved specification on the Mandatory Equipment List (available on the Bentley Hub) **MUST** be used.

- The charger must be set to a mode where a **MINIMUM** of 90a is supplied to the battery during the process. Typically, this is known as 'Power Supply Mode' or 'DIAG+ Mode'.
- A voltage of exactly 14.8v must be set and maintained throughout the process.
- Please refer to the manual to ensure that these requirements are met before beginning any SVM update

Preparation Before Update

WARNING

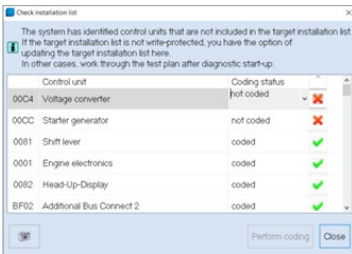
Hybrid Vehicles use a High Voltage System and therefore **MUST ONLY** be worked on by suitable personnel

CAUTION

During the update, switch off all unnecessary consumers. For example, ventilation, seat heaters, interior illumination, exterior lights ect.

Conduct a full guided fault find of the vehicle.

If a 'Check Installation List' pop-up appears, select 'close' (see below image)



Referring to TPI 2075920, address any unknown faults **BEFORE** conducting any of the below updates.

Ensure that the correct battery charger is connected to the vehicle. – Refer to the “Battery Charger” Section above.

Obtaining Hotfix for ODIS-S

NOTICE

The Bentley ODIS-S Brand Version 2.35.2 does not require Hotfix. Only loading of the local flash files.

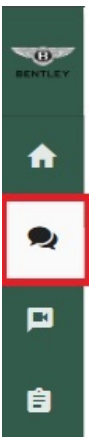
Visit <https://bentley.atheer.io/> and log in with the following case-sensitive account details.

- Username: bilupdate
- Password: Bentley123!

NOTICE

If you are already logged into your retailer account, you will need to logout first. To do this, click on your account initials (bottom left corner) and click “Sign Out”.

After logging in, using the navigation bar on the left hand side, click on the ‘conversations’ tab



Next, click the conversation named “ED40 Campaign”.

NOTICE

You MUST NOT leave the conversation, remove users from the conversation, delete the conversation or alter the conversation in any way. The ONLY action you are permitted to perform is download the applicable file required for this campaign.

In this conversation, you will find a file named “ED40_Local_Flash_Files”.

Left click the file name and download the folder.

After left-clicking the files to download them, the download may take circa 5-10 minutes, do not interrupt this process. You may need to wait a short period (internet speed dependent) for the files to download.

During/before the download commences, there may be a warning about a "pop-up" being blocked which will prevent the file from downloading, ensure to select option "Allow Pop-Ups from this website" to download the file. Wording may differ depending on web browser.

Locate the download file and extract it. To do this, right click the file, click "7 zip" and then "Extract here"

After successfully downloading the file, please logout of the account.

Downloading Flash Files for ODIS-S

From the content within the 'ED40_Local_Flash_Files' download, copy the content of the folder into your root c:/temp drive on your ODIS device.

- FL_4M0915249AN_0201_UPD0004T0005_V001_S.odx
- FL_4M0915249AM_0207_ABJB7A60590M1_V001_S.odx
- FL_4M0915231AH_0204_XHX15EV0421M6_V001_S.odx

High Voltage Shutdown

WARNING

De-energise the high-voltage system via ODIS-S. Refer to ElsaPro, Repair Group 93 – "De-energising high-voltage system" to do so.

1. After de-energisation, Refer to ElsaPro Repair Group 70 'Boot carpet – To remove and fit'. Remove the boot floor and gain access to the earth cable from the 12v battery negative and the body in white (This access will be required later in the test plan).
2. Navigate to 'Special functions' and select 'SVM – Pre 372BIL5201 Hotfix Routines', then 'Perform test'.
3. Switch to 'DoIP' when prompted.
- 4a. For **Continental Flying Spur Vehicles** Select '**1**) BMC/BJB 204/207 Update Repair' and follow the on-screen instructions.
- 4b. For **Continental GT/GTC Vehicles** Select '**8**) BMC/BJB 204/207 Update Repair' and follow the on-screen instructions.
 - When the tester attempts to flash '008C - Battery regulation control module' you may receive a message informing you that the pre-conditions have not been met. Select 'done/continue'.
 - On the following screen (shown below) select option 2 to attempt to flash the ECU – this should allow the '008C - Battery regulation control module' to flash successfully.

NOTICE

If the flash fails, perform the below actions.

1. Exit the test.
2. Allow the car to sleep for 5 minutes.
 - a. Turn off the ignition.
 - b. Remove all equipment from the car (Diagnostic tester/dongle, battery charger, keys).
 - c. Close all doors, windows, bonnet and boot lid.
 - d. Lock the vehicle to perform a CAN-BUS sleep (wait 5 minutes).
3. Clear DTCs from '008C - Battery regulation control module'.
 - 3a. To do this, right click on control unit 008C, click Guided Functions and then click 'Clear Fault Memory'.

4. Return to 'Special functions' and run the test plan 'SVM – Pre 372BIL5201 Hotfix Routines'.
5. Within this test plan, select option 2 and run until completion.
6. Once the test has been completed, right click on control unit 008C and select guided functions. Then, read ECU Identification and ensure that the 06D0 (Battery Junction Box) appears as a subsystem within the read identification test plan.
7. Continue to the next SVM update.

SVM Code Input

WARNING

Re-energise the high-voltage system via ODIS-S. Refer to ElsaPro, Repair Group 93 – “Re-energising high-voltage system” to do so.

1. After re-energising the High Voltage System, navigate to the “Special Functions” tab in ODIS-S.
2. Navigate to 'SVM – Code Input' and enter the SVM Code.
 - a. If the vehicle is any variant of a Continental GT or GTC, enter the SVM Code: “372ED40COM01”.
 - b. If the vehicle is any variant of a Continental Flying Spur, enter the SVM Code: “373ED40COM01”.
3. On the next screen, ensure that the SVM code displayed is correct.
4. You will be shown the communication type. **This MUST be set to “DoIP”.**
 - a. If “DoIP” is not selected, select option 3 until the communication type is set to “DoIP”.
5. After ensuring DoIP is selected, and a suitable battery charger is connected, select Option 1 – “Yes”.
 - a. From here, all control modules will be interrogated and the SVM action will take place.
6. Ensure that the diagnostic device remains connected for the duration of the update.
7. Follow all on-screen prompts until the program ends.
 - a. If you have a prompt stating there is no communication established with 00CC, select done/continue.
8. Follow the on-screen instructions to completion.
9. If you are presented with this screen (Fig 3) at the end of the update, the update was successful. Please continue to step 11.

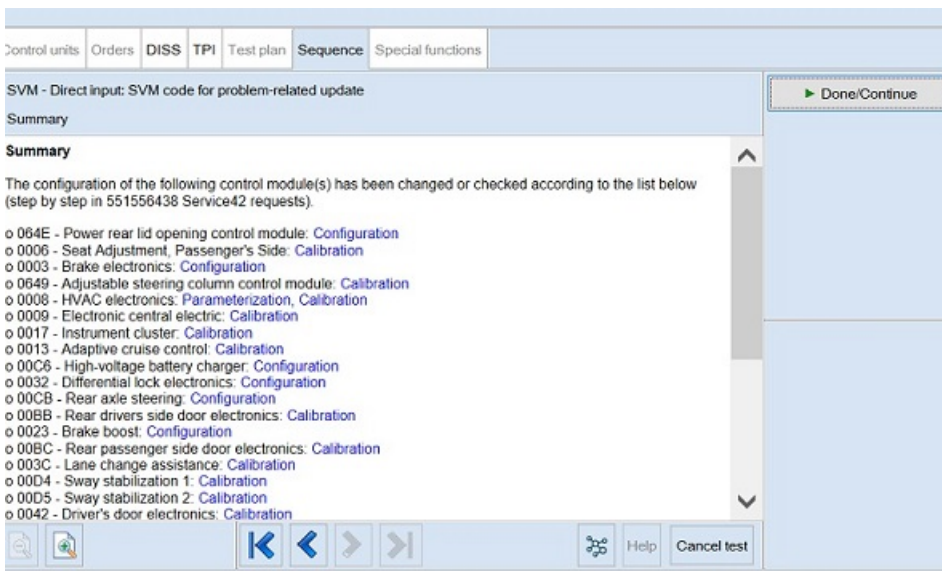


Fig 3

10. If you encounter any errors during the update, please raise a FULL TECHNICAL DISS query.

- a. Customer Statement: "ED40 Support"
- b. Workshop Findings: Give a summary of the error encountered and ensure that the latest Guided Fault Finding log is submitted online.

11. After successful completion of the update, perform the following.

- a. Turn off the ignition.
- b. Remove all equipment from the car (Diagnostic tester/dongle, battery charger, keys).
- c. Close all doors, windows, bonnet and boot lid.
- d. Lock the vehicle to perform a CAN-BUS sleep (wait 15 minutes).

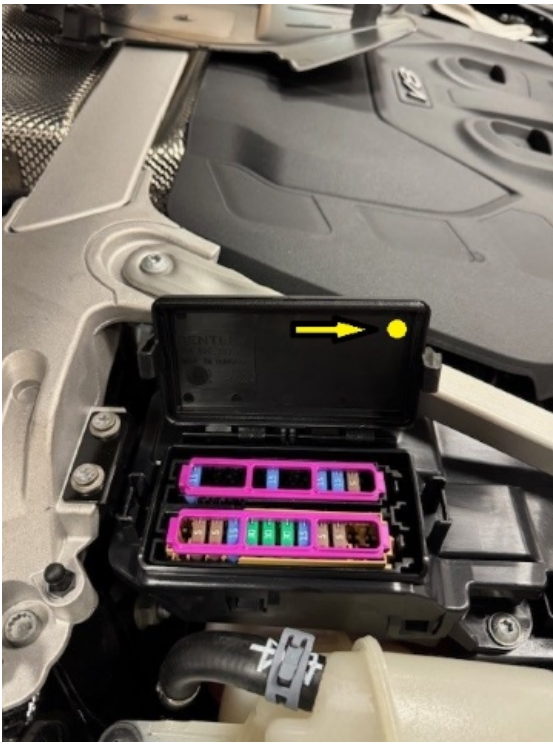
12. After 15 minutes, unlock and open the driver's door. Turn on the ignition, re-connect the battery charger and diagnostic dongle.

13. Re-run guided fault finding and clear DTCs. If any faults are present, refer to TPI 2075920. If any other faults are present, please raise a full DISS query with a full GFF log uploaded online stating the error encountered.

Identification

Once the applicable action has been conducted, the operative must submit a warranty claim as this will show the service campaign action as complete within Elsa Pro "Repair history".

You must also add a yellow paint mark to the underside of the Fusebox cover as per the picture below.



[▲ Repair instructions](#) [▲ Notes](#)

AMERICAS

SCBBP6ZG0SC022799
 SCBBP6ZG1SC022682
 SCBBP6ZG1SC022763
 SCBBP6ZG1SC022911
 SCBBP6ZG1SC023055
 SCBBP6ZG1SC023122
 SCBBP6ZG2SC022898
 SCBBP6ZG2SC023114
 SCBBP6ZG4SC023020
 SCBBP6ZG5SC022703
 SCBBP6ZG6SC022726
 SCBBP6ZG6SC022760
 SCBBP6ZG6SC022855
 SCBBP6ZG8SC022775
 SCBBP6ZG8SC022873
 SCBBP6ZG9SC022994
 SCBBP6ZG9SC023014
 SCBBP6ZGXSC022891
 SCBBP6ZGXSC022907
 SCBBP6ZGXSC023023
 SCBBR6ZG0SC022540
 SCBBR6ZG0SC022649
 SCBBR6ZG0SC022697
 SCBBR6ZG0SC022795
 SCBBR6ZG0SC022831
 SCBBR6ZG0SC023008
 SCBBR6ZG1SC022384
 SCBBR6ZG1SC022448
 SCBBR6ZG1SC022479
 SCBBR6ZG1SC022496
 SCBBR6ZG1SC022594
 SCBBR6ZG1SC022644
 SCBBR6ZG1SC022806
 SCBBR6ZG1SC022885
 SCBBR6ZG1SC023017
 SCBBR6ZG2SC022409
 SCBBR6ZG2SC022524
 SCBBR6ZG2SC022605
 SCBBR6ZG2SC022717
 SCBBR6ZG2SC022748
 SCBBR6ZG2SC022801
 SCBBR6ZG2SC022829
 SCBBR6ZG2SC022880

ASIA PACIFIC

SCBBF53S1SC022529
 SCBBF53S1SC022580
 SCBBF53S2SC022815
 SCBBF53S3SC022581
 SCBBF53S5SC022825
 SCBBF53S6SC022476
 SCBBF53S6SC022901
 SCBBJ53S6SC022556
 SCBBR53S0SC022481
 SCBBR53S0SC022920
 SCBBR53S0SC023033
 SCBBR53S1SC022425
 SCBBR53S1SC023039
 SCBBR53S2SC022952
 SCBBR53S3SC022569
 SCBBR53S3SC023091
 SCBBR53S4SC022404
 SCBBR53S4SC022693
 SCBBR53S4SC023097
 SCBBR53S5SC022394
 SCBBR53S6SC022663
 SCBBR53S6SC022811
 SCBBR53S7SC022834
 SCBBR53S9SC022740
 SCBBR53S9SC023144
 SCBCF13S1SC022494
 SCBCF13S1SC022530
 SCBCF13S1SC022544
 SCBCF13S2SC022424
 SCBCF13S7SC022614
 SCBCF13S7SC023195
 SCBCF13S8SC022461
 SCBCF13S9SC022467
 SCBCF13SXSC022378
 SCBCF13SXSC022414
 SCBCF13SXSC022610
 SCBCJ13S9SC022435
 SCBCR13S4SC022545
 SCBCR13S4SC022917
 SCBCR13S6SC022725
 SCBCR13S7SC023043
 SCBCR13S8SC022807
 SCBCR13S9SC022508

CHINESE MAINLAND HK
AND MACAO

SCBBF53S3SC022564
 SCBBF53SXSC023047
 SCBBG53S0SC022535
 SCBBG53S0SC022549
 SCBBG53S0SC022552
 SCBBG53S0SC022728
 SCBBG53S1SC022382
 SCBBG53S1SC022513
 SCBBG53S1SC022642
 SCBBG53S2SC022522
 SCBBG53S2SC022584
 SCBBG53S2SC022603
 SCBBG53S2SC022651
 SCBBG53S2SC022746
 SCBBG53S2SC022942
 SCBBG53S3SC022433
 SCBBG53S3SC022576
 SCBBG53S4SC022571
 SCBBG53S4SC022599
 SCBBG53S4SC022876
 SCBBG53S5SC022613
 SCBBG53S5SC022661
 SCBBG53S5SC022708
 SCBBG53S5SC022711
 SCBBG53S5SC022742
 SCBBG53S5SC022837
 SCBBG53S6SC022412
 SCBBG53S6SC022460
 SCBBG53S6SC022474
 SCBBG53S6SC022507
 SCBBG53S6SC022636
 SCBBG53S6SC022667
 SCBBG53S7SC023004
 SCBBG53S7SC023035
 SCBBG53S7SC023164
 SCBBG53S8SC022492
 SCBBG53S8SC022542
 SCBBG53S8SC022623
 SCBBG53S8SC022752
 SCBBG53S8SC022895
 SCBBG53S9SC022470
 SCBBG53S9SC022498
 SCBBG53S9SC022517

SCBBR6ZG2SC022930	SCBDF33S2SC022486	SCBBG53S9SC022646
SCBBR6ZG2SC023012	SCBDF33S3SC022383	SCBBG53SXSC022445
SCBBR6ZG3SC022466	SCBDF33S4SC022375	SCBBG53SXSC022526
SCBBR6ZG3SC022628	SCBDF33S4SC022635	SCBBG53SXSC022719
SCBBR6ZG3SC022631	SCBDF33S7SC022452	SCBBG53SXSC022736
SCBBR6ZG4SC022377	SCBDF33S8SC022489	SCBBG53SXSC022851
SCBBR6ZG4SC022427	SCBDR33S0SC023076	SCBBG53SXSC023062
SCBBR6ZG4SC022511	SCBDR33S1SC022776	SCBCF13SXSC022655
SCBBR6ZG4SC022640	SCBDR33S9SC022587	SCBCG13S0SC022645
SCBBR6ZG4SC022671	SCBDR33SXSC022632	SCBCG13S1SC022573
SCBBR6ZG4SC022766	SCBBR53S6SC022940	SCBCG13S2SC023120
SCBBR6ZG4SC022833	SCBDR33S6SC023129	SCBCG13S3SC022381
SCBBR6ZG4SC022847	SCBBR53S2SC023082	SCBCG13S4SC022437
SCBBR6ZG4SC022914	SCBBR53S0SC023274	SCBCG13S4SC022499
SCBBR6ZG4SC023058	SCBCR13S4SC023016	SCBCG13S4SC022583
SCBBR6ZG5SC022422	SCBDF33S1SC022589	SCBCG13S6SC023024
SCBBR6ZG5SC022436		SCBCG13S7SC022397
SCBBR6ZG5SC022453		SCBCG13S7SC023128
SCBBR6ZG5SC022520		SCBCG13S8SC022490
SCBBR6ZG5SC022551		SCBCG13S9SC022434
SCBBR6ZG5SC022601		SCBCG13S9SC022840
SCBBR6ZG5SC022792		SCBCG13S9SC022935
SCBBR6ZG5SC022839		SCBCG13S9SC023115
SCBBR6ZG5SC022842		SCBCG13SXSC022832
SCBBR6ZG5SC022887		SCBDF33SXSC022512
SCBBR6ZG5SC023067		SCBDG33S0SC022418
SCBBR6ZG6SC022509		SCBDG33S3SC022543
SCBBR6ZG6SC022574		SCBDG33S3SC022624
SCBBR6ZG6SC022638		SCBBG53S0SC023118
SCBBR6ZG6SC022669		SCBBG53S0SC023233
SCBBR6ZG6SC022817		SCBBG53S8SC023237
SCBBR6ZG7SC022440		SCBCG13S0SC023021
SCBBR6ZG7SC022485		SCBCG13S6SC023234
SCBBR6ZG7SC022504		SCBBG53S8SC023125
SCBBR6ZG7SC022695		SCBCG13S6SC023007
SCBBR6ZG8SC022379		SCBDG33SXSC023222
SCBBR6ZG8SC022396		SCBBG53S0SC023149
SCBBR6ZG8SC022429		SCBBG53S1SC023306
SCBBR6ZG8SC022558		SCBBG53S3SC023257
SCBBR6ZG8SC022723		SCBBG53S7SC023276
SCBBR6ZG8SC022849		SCBBG53S9SC023053
SCBBR6ZG9SC022388		SCBCG13S5SC023225
SCBBR6ZG9SC022438		SCBCG13S6SC023217
SCBBR6ZG9SC022455		SCBCG13S9SC023244
SCBBR6ZG9SC022472		SCBCG13S1SC023318

SCBBR6ZG9SC022620
SCBBR6ZG9SC022701
SCBBR6ZG9SC022827
SCBBR6ZG9SC022925
SCBBR6ZGXSC022416
SCBBR6ZGXSC022450
SCBBR6ZGXSC022464
SCBBR6ZGXSC022514
SCBBR6ZGXSC022531
SCBBR6ZGXSC022562
SCBBR6ZGXSC022609
SCBBR6ZGXSC022657
SCBBR6ZGXSC022819
SCBBR6ZGXSC022867
SCBCP2ZG0SC022749
SCBCP2ZG0SC022993
SCBCP2ZG0SC023075
SCBCP2ZG2SC023126
SCBCP2ZG3SC022678
SCBCP2ZG3SC022888
SCBCP2ZG3SC023068
SCBCP2ZG5SC022830
SCBCP2ZG5SC022908
SCBCP2ZG6SC022822
SCBCP2ZG6SC023002
SCBCP2ZG8SC022949
SCBCP2ZG9SC022684
SCBCP2ZG9SC022698
SCBCP2ZG9SC023107
SCBCP2ZG9SC023138
SCBCP2ZGXSC023178
SCBCR2ZG0SC022387
SCBCR2ZG0SC022406
SCBCR2ZG0SC022566
SCBCR2ZG0SC022616
SCBCR2ZG0SC022650
SCBCR2ZG0SC022793
SCBCR2ZG0SC022812
SCBCR2ZG1SC022575
SCBCR2ZG1SC022608
SCBCR2ZG1SC022625
SCBCR2ZG1SC022852
SCBCR2ZG1SC022947
SCBCR2ZG1SC022995
SCBCR2ZG2SC022505

SCBCR2ZG2SC022519
SCBCR2ZG2SC022553
SCBCR2ZG2SC022570
SCBCR2ZG3SC022402
SCBCR2ZG3SC022495
SCBCR2ZG3SC022593
SCBCR2ZG4SC022408
SCBCR2ZG4SC022523
SCBCR2ZG4SC022568
SCBCR2ZG4SC022733
SCBCR2ZG5SC022689
SCBCR2ZG5SC022739
SCBCR2ZG5SC022854
SCBCR2ZG6SC022376
SCBCR2ZG6SC022538
SCBCR2ZG6SC022541
SCBCR2ZG6SC022619
SCBCR2ZG6SC022877
SCBCR2ZG6SC023141
SCBCR2ZG7SC022533
SCBCR2ZG7SC022550
SCBCR2ZG7SC022659
SCBCR2ZG7SC022709
SCBCR2ZG7SC022774
SCBCR2ZG7SC022953
SCBCR2ZG7SC023147
SCBCR2ZG8SC022458
SCBCR2ZG8SC022475
SCBCR2ZG8SC022637
SCBCR2ZG8SC022816
SCBCR2ZG8SC022928
SCBCR2ZG9SC022484
SCBCR2ZG9SC023022
SCBCR2ZG9SC023084
SCBCR2ZGXSC022641
SCBCR2ZGXSC022767
SCBCR2ZGXSC022798
SCBCR2ZGXSC022879
SCBCR2ZGXSC022932
SCBCR2ZGXSC023109
SCBDP4ZG0SC022802
SCBDP4ZG0SC022945
SCBDP4ZG1SC022677
SCBDP4ZG1SC022758
SCBDP4ZG3SC023071

SCBDP4ZG4SC022866
SCBDP4ZG4SC023029
SCBDP4ZG4SC023175
SCBDP4ZG6SC022836
SCBDP4ZG7SC022683
SCBDP4ZG8SC022899
SCBDP4ZG9SC022782
SCBDP4ZG9SC022846
SCBDP4ZG9SC022894
SCBDP4ZGXSC023133
SCBDR4ZG0SC022941
SCBDR4ZG1SC022656
SCBDR4ZG1SC022768
SCBDR4ZG1SC023063
SCBDR4ZG2SC022391
SCBDR4ZG2SC022567
SCBDR4ZG2SC022598
SCBDR4ZG2SC022617
SCBDR4ZG2SC023072
SCBDR4ZG3SC022447
SCBDR4ZG3SC022500
SCBDR4ZG3SC022528
SCBDR4ZG3SC022612
SCBDR4ZG3SC022724
SCBDR4ZG4SC022411
SCBDR4ZG4SC022456
SCBDR4ZG4SC022652
SCBDR4ZG4SC022747
SCBDR4ZG4SC022893
SCBDR4ZG4SC022926
SCBDR4ZG5SC022126
SCBDR4ZG5SC022403
SCBDR4ZG5SC022482
SCBDR4ZG5SC022532
SCBDR4ZG5SC022577
SCBDR4ZG5SC022627
SCBDR4ZG5SC022658
SCBDR4ZG6SC022426
SCBDR4ZG6SC022765
SCBDR4ZG7SC022385
SCBDR4ZG7SC022502
SCBDR4ZG7SC022600
SCBDR4ZG7SC022662
SCBDR4ZG8SC022668
SCBDR4ZG8SC023108

SCBDR4ZG9SC022579
SCBDR4ZG9SC022999
SCBDR4ZGXSC022459
SCBDR4ZGXSC022462
SCBDR4ZGXSC022929
SCBBP6ZG8SC022680
SCBBR6ZG6SC023191
SCBDR4ZG3SC023100
SCBBP6ZG8SC023179
SCBBR6ZG3SC023228
SCBBR6ZG4SC023030
SCBCP2ZG3SC022745
SCBCR2ZG9SC023229
SCBDP4ZG1SC023215
SCBDP4ZG6SC022738
SCBDP4ZGXSC022449
SCBDR4ZG4SC023185
SCBDR4ZG8SC023187
SCBDR4ZGXSC023143
SCBBP6ZG2SC023243
SCBBR6ZG6SC023224
SCBCP2ZG6SC023260
SCBCP2ZG7SC023221
SCBCR2ZG4SC023123
SCBCR2ZG8SC023268
SCBCR2ZGXSC022753
SCBDP4ZG6SC023212
SCBBP6ZG5SC022734
SCBBP6ZG7SC022699
SCBBP6ZGXSC023264
SCBBR6ZG0SC023106
SCBBR6ZG0SC023283
SCBBR6ZG1SC022997
SCBBR6ZG7SC023281
SCBBR6ZG7SC023295
SCBCP2ZG1SC023263
SCBCP2ZG3SC023247
SCBDR4ZG0SC023250
SCBDR4ZG6SC023267
SCBBP6ZG6SC023312
SCBBR6ZG1SC023261
SCBBR6ZG9SC023301
SCBCR2ZG2SC023296

EUROPE

SCBBF53S0SC022537
 SCBBF53S0SC022554
 SCBBF53S0SC022909
 SCBBF53S1SC022420
 SCBBF53S1SC022918
 SCBBF53S2SC022653
 SCBBF53S3SC022547
 SCBBF53S3SC022757
 SCBBF53S4SC022590
 SCBBF53S5SC022386
 SCBBF53S5SC022730
 SCBBF53S5SC022789
 SCBBF53S7SC022860
 SCBBF53S8SC022690
 SCBBF53S9SC022715
 SCBBF53S9SC022777
 SCBBJ53S0SC022732
 SCBBJ53S6SC023027
 SCBBL53S2SC022676
 SCBBL53S4SC022744
 SCBBL53S4SC022808
 SCBBL53S5SC022431
 SCBBL53S7SC022821
 SCBBL53S8SC022844
 SCBBL53S8SC022858
 SCBBL53S9SC022674
 SCBBL53S9SC022786
 SCBBL53S9SC023162
 SCBBL53SXSC022781
 SCBCF13S0SC022454
 SCBCF13S0SC022471
 SCBCF13S0SC022521
 SCBCF13S0SC022597
 SCBCF13S0SC022633
 SCBCF13S0SC022700
 SCBCF13S0SC022759
 SCBCF13S0SC022809
 SCBCF13S0SC022826
 SCBCF13S0SC022857
 SCBCF13S0SC023099
 SCBCF13S1SC022463
 SCBCF13S1SC022477
 SCBCF13S1SC022480

INTERNAL

SCBBL53S8SC022875
 SCBCL13S1SC023038

MIDDLE EAST AFRICA &
INDIA

SCBBF53S4SC023111
 SCBBF53SXSC022626
 SCBBF5ZG0SC022685
 SCBBF5ZG2SC022560
 SCBBF5ZG2SC022588
 SCBBF5ZG2SC022607
 SCBBF5ZG2SC023093
 SCBBF5ZG4SC022611
 SCBBF5ZG5SC022407
 SCBBF5ZG7SC022862
 SCBBF5ZG9SC022457
 SCBBF5ZG9SC022488
 SCBBF5ZGXSC022483
 SCBBF5ZGXSC022936
 SCBCF13S9SC022954
 SCBCF13SXSC022803
 SCBCF1ZG0SC022442
 SCBCF1ZG0SC023168
 SCBCF1ZG1SC022871
 SCBCF1ZG1SC023146
 SCBCF1ZG2SC023088
 SCBCF1ZG3SC023083
 SCBCF1ZG6SC022770
 SCBCF1ZG7SC022602
 SCBCF1ZG9SC022634
 SCBCF1ZG9SC022665
 SCBCH13S0SC022772
 SCBCH13S4SC022712
 SCBCJ13S0SC022923
 SCBCJ13S2SC022390
 SCBCJ13S6SC022506
 SCBDF3ZG3SC022595
 SCBDF3ZG8SC022415
 SCBDF3ZG8SC022639
 SCBDJ33S8SC022491
 SCBDJ3ZG9SC022518
 SCBCF1ZG4SC023190
 SCBBF5ZG5SC023248

SCBCF13S1SC022527
SCBCF13S1SC022673
SCBCF13S1SC022785
SCBCF13S1SC022897
SCBCF13S1SC023127
SCBCF13S1SC023158
SCBCF13S2SC022536
SCBCF13S2SC022780
SCBCF13S2SC022889
SCBCF13S2SC022892
SCBCF13S2SC022939
SCBCF13S2SC023086
SCBCF13S3SC022660
SCBCF13S3SC022741
SCBCF13S3SC022769
SCBCF13S3SC022903
SCBCF13S3SC023050
SCBCF13S3SC023064
SCBCF13S4SC022439
SCBCF13S4SC022604
SCBCF13S4SC022666
SCBCF13S4SC022778
SCBCF13S4SC022828
SCBCF13S5SC022417
SCBCF13S5SC022451
SCBCF13S5SC022465
SCBCF13S5SC022501
SCBCF13S5SC022823
SCBCF13S5SC023003
SCBCF13S5SC023096
SCBCF13S6SC022393
SCBCF13S6SC022510
SCBCF13S6SC022586
SCBCF13S6SC022622
SCBCF13S6SC022670
SCBCF13S6SC022720
SCBCF13S6SC022796
SCBCF13S6SC022913
SCBCF13S6SC023009
SCBCF13S6SC023057
SCBCF13S7SC022421
SCBCF13S7SC022578
SCBCF13S7SC022743
SCBCF13S7SC022869
SCBCF13S8SC022380

SCBCF13S8SC022654
SCBCF13S8SC022718
SCBCF13S8SC022783
SCBCF13S8SC022881
SCBCF13S8SC023061
SCBCF13S9SC022405
SCBCF13S9SC022419
SCBCF13S9SC022565
SCBCF13S9SC022596
SCBCF13S9SC022629
SCBCF13S9SC022937
SCBCF13S9SC023019
SCBCF13S9SC023036
SCBCF13S9SC023117
SCBCF13SXSC022557
SCBCF13SXSC022591
SCBCF13SXSC022722
SCBCF13SXSC022865
SCBCF13SXSC023000
SCBCJ13S0SC023134
SCBCJ13S1SC022672
SCBCJ13S6SC023025
SCBCJ13SXSC022413
SCBCL13S0SC022687
SCBCL13S0SC022818
SCBCL13S0SC023077
SCBCL13S1SC022729
SCBCL13S1SC022794
SCBCL13S1SC023069
SCBCL13S2SC022691
SCBCL13S2SC022710
SCBCL13S2SC022884
SCBCL13S2SC022996
SCBCL13S2SC023081
SCBCL13S2SC023131
SCBCL13S3SC022702
SCBCL13S3SC022845
SCBCL13S3SC022859
SCBCL13S4SC022790
SCBCL13S4SC022921
SCBCL13S4SC023101
SCBCL13S6SC022886
SCBCL13S6SC022919
SCBCL13S6SC023049
SCBCL13S7SC022735

SCBCL13S7SC022931
SCBCL13S7SC023092
SCBCL13S8SC022713
SCBCL13S8SC022761
SCBCL13S9SC023112
SCBCL13S9SC023157
SCBCL13SXSC022874
SCBCL13SXSC022938
SCBCL13SXSC023037
SCBCL13SXSC023054
SCBCL13SXSC023166
SCBDF33S0SC022423
SCBDF33S0SC022731
SCBDF33S0SC022762
SCBDF33S1SC022592
SCBDF33S1SC022902
SCBDF33S1SC023015
SCBDF33S2SC022441
SCBDF33S2SC022469
SCBDF33S2SC022696
SCBDF33S2SC023105
SCBDF33S3SC022478
SCBDF33S3SC022559
SCBDF33S3SC022643
SCBDF33S3SC022755
SCBDF33S3SC022805
SCBDF33S3SC022870
SCBDF33S3SC022948
SCBDF33S4SC022389
SCBDF33S4SC022473
SCBDF33S4SC023087
SCBDF33S4SC023137
SCBDF33S5SC022630
SCBDF33S5SC022773
SCBDF33S5SC023034
SCBDF33S5SC023048
SCBDF33S6SC022555
SCBDF33S6SC023060
SCBDF33S7SC022497
SCBDF33S7SC022516
SCBDF33S7SC022841
SCBDF33S7SC022905
SCBDF33S8SC022525
SCBDF33S8SC022539
SCBDF33S8SC022606

SCBDF33S8SC022797
SCBDF33S8SC022864
SCBDF33S9SC022534
SCBDF33S9SC022582
SCBDF33SXSC022395
SCBDF33SXSC022428
SCBDF33SXSC022686
SCBDF33SXSC022784
SCBDF33SXSC023031
SCBDL33S0SC022771
SCBDL33S0SC022916
SCBDL33S0SC023113
SCBDL33S2SC022934
SCBDL33S3SC022814
SCBDL33S4SC022675
SCBDL33S4SC023051
SCBDL33S5SC022779
SCBDL33S5SC023110
SCBDL33S6SC022788
SCBDL33S9SC022820
SCBCL13S0SC023032
SCBBF53S5SC022615
SCBCF13S0SC023202
SCBCF13S5SC023194
SCBCF13S8SC023206
SCBCL13S1SC023198
SCBCL13S3SC022912
SCBCL13S4SC023177
SCBCL13S9SC023188
SCBDF33S0SC022261
SCBDF33S6SC023155
SCBDF33S8SC023089
SCBDF33S8SC023139
SCBDF33S9SC023005
SCBDF33S9SC023098
SCBDL33S6SC023116
SCBDL33S6SC023200
SCBDL33SXSC023183
SCBBF53S3SC023231
SCBBL53S6SC022955
SCBCF13S2SC023184
SCBCF13S4SC023249
SCBCF13S6SC022992
SCBCF13S8SC023223
SCBCF13S9SC023151

SCBCF13SXSC023174
SCBCF13SXSC023241
SCBCL13S0SC023189
SCBCL13S4SC023213
SCBCL13S5SC023236
SCBCL13S7SC023240
SCBDF33S5SC023230
SCBDL33S0SC023242
SCBDL33S6SC023150
SCBBF53SXSC022853
SCBBF53SXSC023226
SCBCF13S1SC023211
SCBCF13S7SC023259
SCBBF53S6SC023286
SCBBL53S3SC023142
SCBBL53S5SC023255
SCBBL53S6SC023135
SCBCF13S1SC023273
SCBCF13S8SC022878
SCBCL13S8SC023196
SCBCL13S9SC023269
SCBDF33S1SC023256
SCBDF33S6SC023253
SCBDF33S6SC023284
SCBDF33S8SC023173
SCBDF33S9SC023313
SCBDL33S0SC023287
SCBDL33S4SC023258
SCBBF53S5SC023280
SCBCF13S6SC023026
SCBCL13S7SC023304
SCBDF33S4SC023297

UNITED KINGDOM

SCBBF53S0SC022392
SCBBF53S0SC022618
SCBBF53S7SC022664
SCBBF53S9SC023041
SCBBL53S1SC022927
SCBBL53S3SC022721
SCBBL53S5SC022882
SCBBL53S7SC022804
SCBBL53S7SC022933
SCBBL53S7SC023001
SCBBL53S9SC022688

SCBBL53SXSC022750
SCBCF13S0SC022468
SCBCF13S0SC022843
SCBCF13S1SC022561
SCBCF13S2SC022410
SCBCF13S2SC022648
SCBCF13S4SC022487
SCBCF13S5SC022515
SCBCF13S5SC023132
SCBCF13S6SC022443
SCBCF13S6SC022863
SCBCF13S6SC022944
SCBCF13S9SC022503
SCBCF13S9SC022548
SCBCF13S9SC022694
SCBCF13SXSC023028
SCBCL13S0SC022446
SCBCL13S0SC022737
SCBCL13S0SC022835
SCBCL13S0SC022883
SCBCL13S0SC022950
SCBCL13S0SC023046
SCBCL13S1SC022813
SCBCL13S1SC022861
SCBCL13S1SC023119
SCBCL13S1SC023136
SCBCL13S2SC023145
SCBCL13S3SC022764
SCBCL13S3SC023056
SCBCL13S3SC023090
SCBCL13S4SC022756
SCBCL13S4SC022787
SCBCL13S4SC023065
SCBCL13S4SC023163
SCBCL13S6SC022838
SCBCL13S6SC022998
SCBCL13S6SC023018
SCBCL13S7SC022850
SCBCL13S7SC022900
SCBCL13S7SC023013
SCBCL13S7SC023044
SCBCL13S8SC022727
SCBCL13S8SC022890
SCBCL13S8SC022906
SCBCL13S8SC023103

SCBCL13S9SC023059
SCBCL13SXSC022681
SCBCL13SXSC022924
SCBCL13SXSC023006
SCBCL13SXSC023152
SCBDF33S0SC022647
SCBDF33S0SC022714
SCBDF33S0SC023040
SCBDF33S1SC022432
SCBDF33S4SC022585
SCBDF33S5SC022546
SCBDF33S5SC022563
SCBDF33S6SC022572
SCBDF33SXSC022493
SCBDL33S1SC022679
SCBDL33S2SC022951
SCBDL33S2SC023095
SCBDL33S3SC022716
SCBDL33S4SC022868
SCBDL33S5SC022751
SCBDL33S5SC023074
SCBDL33S5SC023124
SCBDL33S6SC022791
SCBDL33S6SC022810
SCBDL33S6SC022824
SCBDL33S6SC022872
SCBDL33SXSC022910
SCBBF53S0SC023171
SCBCL13S0SC023192
SCBCL13S1SC023170
SCBCL13S1SC023203
SCBCL13S6SC023066
SCBCL13S9SC023207
SCBDF33S7SC023181
SCBDL33S1SC023167
SCBDL33S9SC022896
SCBBL53S9SC023193
SCBCF13S6SC023172
SCBCL13S1SC023251
SCBCL13S3SC023154
SCBCL13S7SC023254
SCBCL13S8SC023201
SCBDL33S4SC023227
SCBBL53S7SC023239
SCBCF13S7SC023245

SCBCL13S5SC023219
SCBBF53S6SC023160
SCBBL53S2SC023293
SCBBL53S6SC023216
SCBCF13S2SC023279
SCBCL13S4SC023342